

**MARATHON OIL CO.**  
**BLACK HOLLOW 8-67-16-3H**  
 LOCATED WITHIN NW/4 NE/4 OF SECTION 16 T8N R67W  
 OF THE 6TH P.M., WELD COUNTY, COLORADO

PHOTO "A" TAKEN FROM THE SOUTH LOOKING NORTH



BLACK HOLLOW 8-67-16-3H North.jpg

2/22/2012

PHOTO "B" TAKEN FROM THE WEST LOOKING EAST



BLACK HOLLOW 8-67-16-3H East.jpg

2/22/2012

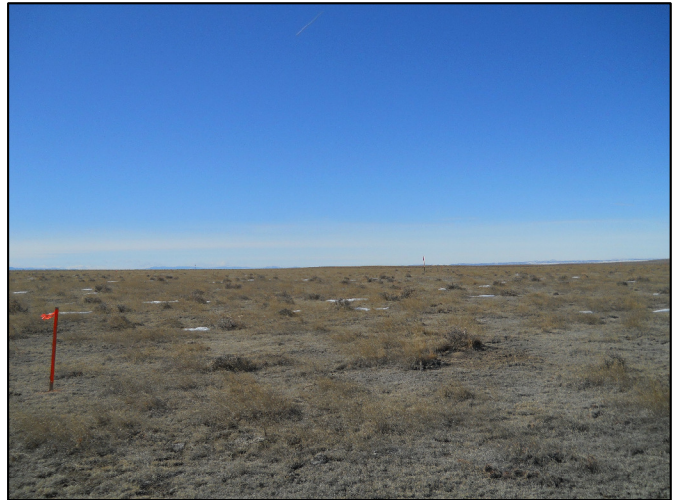
PHOTO "C" TAKEN FROM THE NORTH LOOKING SOUTH



BLACK HOLLOW 8-67-16-3H South.jpg

2/22/2012

PHOTO "D" TAKEN FROM THE EAST LOOKING WEST



BLACK HOLLOW 8-67-16-3H West.jpg

2/22/2012

**CONFIDENTIALITY NOTES:**

The information contained in this plat is legally privileged and confidential information intended only for the use of the recipients. If you are not the intended recipients, you are hereby notified that any use, dissemination, distribution or copying of this information is strictly prohibited.



**WILLIAM H. SMITH  
& ASSOCIATES P.C.**

**SURVEYING CONSULTANTS**  
 550 EAST SECOND NORTH PHONE: 307-875-3638  
 GREEN RIVER, WY 307-875-3639  
 www.whsmithpc.com

DRAWN BY: IBB

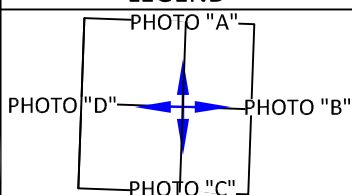
CHECKED BY: RAW

PROJECT NO: 867163H

JOB NO: 2011001

REVISIONS:

**LEGEND**



**LOCATION:**

BLACK HOLLOW  
 8-67-16-3H  
 WITHIN NW/4 NE/4  
 SECTION 16,  
 T 8 N, R 67 W,  
 6TH PM.  
 WELD COUNTY,  
 COLORADO

**MARATHON OIL COMPANY**  
 PO BOX 3128, HOUSTON TX, 77253  
 5555 SAN FELIPE, HOUSTON TX, 77056

**WELL LOCATION PICTURES**

SCALE: N/A  
 DATE: 3/5/2012

EXHIBIT "B"  
 SHEET 1 OF 14