

# Mineral Resources Inc

Well Name: **BESTWAY 12-2**

Surface Location: BESTWAY HOR PAD 2-5N-66W

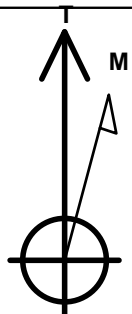
North American Datum 1983 , US State Plane 1983 , Colorado Northern Zone

Ground Elevation: 4699.0

+N/-S	+E/-W	Northing	Easting	Latitude	Longitude	Slot
0.0	0.0	1400718.30	3211772.08	40.430880	-104.739270	
RKB RIG 14 RKB @ 4714.0ft (RKB RIG 14)						

## WELLBORE TARGET DETAILS

Name	TVD	+N/-S	+E/-W	Shape
HARDLINE 460'FEL	1.0	1442.0	729.4	Polygon
HARDLINE BHL 460'FWL	1.0	1384.0	-3889.2	Polygon
BHL 1341'FNL & 460'FWL	6850.0	984.0	-3886.2	Point
T1 1340'FNL & 460'FEL	6850.0	1042.0	729.4	Point



Azimuths to True North  
Magnetic North: 8.77°

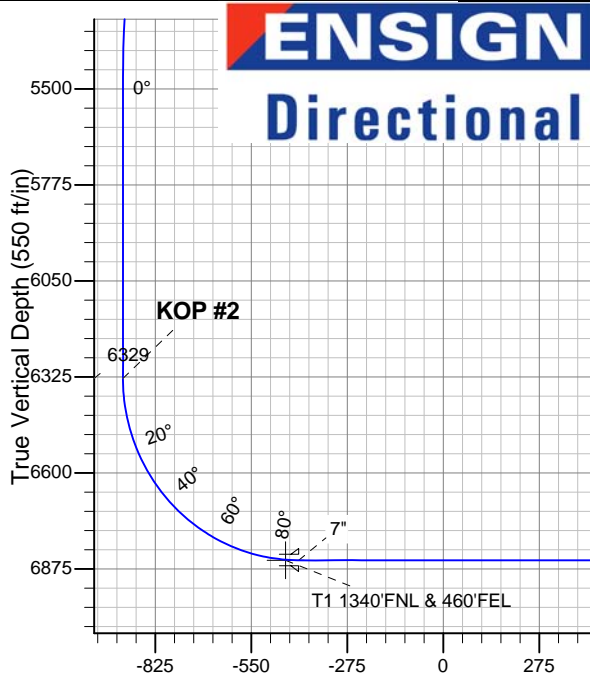
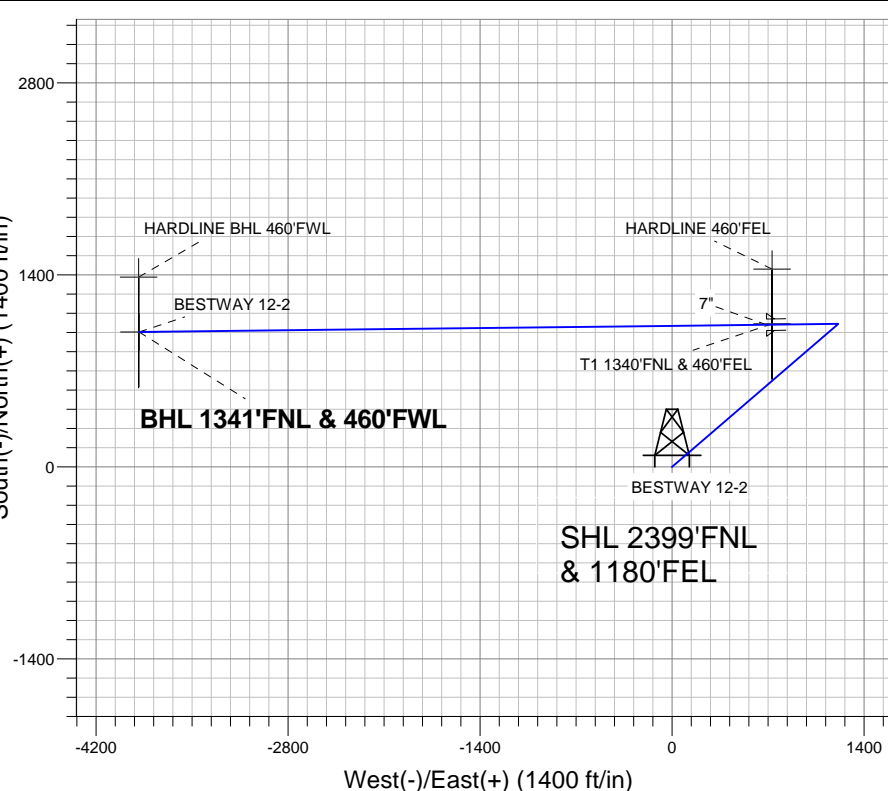
Magnetic Field  
Strength: 53082.4nT  
Dip Angle: 67.06°  
Date: 2/9/2012  
Model: IGRF2010

BESTWAY HOR PAD 2-5N-66W  
BESTWAY 12-2  
PLAN 1 (FEB 9 2012)  
13:08, February 15 2012

## ANNOTATIONS

TVD	MD	Annotation
200.0	200.0	KOP #1
6329.2	6596.2	KOP #2

South(-)/North(+) (1400 ft/in)



## SECTION DETAILS

Sec	MD	Inc	Azi	TVD	+N/-S	+E/-W	DLeg	TFace	VSec	Target
1	0.0	0.00	0.00	0.0	0.0	0.0	0.00	0.00	0.0	
2	200.0	0.00	0.00	200.0	0.0	0.0	0.00	0.00	0.0	
3	1227.0	20.54	49.27	1205.1	118.8	138.0	2.00	49.27	-104.6	
4	4740.1	20.54	49.27	4494.9	923.1	1072.0	0.00	0.00	-812.6	
5	5767.0	0.00	0.00	5500.0	1042.0	1210.0	2.00	180.00	-917.2	
6	6596.2	0.00	0.00	6329.1	1042.0	1210.0	0.00	0.00	-917.2	
7	7414.3	90.00	269.35	6850.0	1036.0	689.2	11.00	269.35	-413.8	
8	11990.0	90.00	269.35	6850.0	984.0	-3886.2	0.00	0.00	4008.9	BHL 1341'FNL & 460'FWL

BHL 1341'FNL & 460'FWL

Vertical Section at 284.21° (550 ft/in)



## **Mineral Resources Inc**

**SEC.2-T5N-R66W**

**BESTWAY HOR PAD 2-5N-66W**

**BESTWAY 12-2**

**Wellbore #1**

**Plan: PLAN 1 (FEB 9 2012)**

## **Standard Planning Report**

**15 February, 2012**

<b>Database:</b>	Landmark	<b>Local Co-ordinate Reference:</b>	Well BESTWAY 12-2
<b>Company:</b>	Mineral Resources Inc	<b>TVD Reference:</b>	RKB @ 4714.0ft (RKB RIG 14)
<b>Project:</b>	SEC.2-T5N-R66W	<b>MD Reference:</b>	RKB @ 4714.0ft (RKB RIG 14)
<b>Site:</b>	BESTWAY HOR PAD 2-5N-66W	<b>North Reference:</b>	True
<b>Well:</b>	BESTWAY 12-2	<b>Survey Calculation Method:</b>	Minimum Curvature
<b>Wellbore:</b>	Wellbore #1		
<b>Design:</b>	PLAN 1 (FEB 9 2012)		

<b>Project</b>	SEC.2-T5N-R66W, Weld County, Colorado		
<b>Map System:</b>	US State Plane 1983	<b>System Datum:</b>	Mean Sea Level
<b>Geo Datum:</b>	North American Datum 1983		Using Well Reference Point
<b>Map Zone:</b>	Colorado Northern Zone		Using geodetic scale factor

Site	BESTWAY HOR PAD 2-5N-66W				
Site Position:		Northing:	1,400,656.38 ft	Latitude:	40.430710
From:	Lat/Long	Easting:	3,211,772.61 ft	Longitude:	-104.739270
Position Uncertainty:	0.0 ft	Slot Radius:	"	Grid Convergence:	0.49 °

Well		BESTWAY 12-2				
Well Position	+N-S	61.9 ft	Northing:	1,400,718.30 ft	Latitude:	40.430880
	+E-W	0.0 ft	Easting:	3,211,772.08 ft	Longitude:	-104.739270
Position Uncertainty		0.0 ft	Wellhead Elevation:	ft	Ground Level:	4,699.0 ft

<b>Wellbore</b>	Wellbore #1				
<b>Magnetics</b>	<b>Model Name</b>	<b>Sample Date</b>	<b>Declination (°)</b>	<b>Dip Angle (°)</b>	<b>Field Strength (nT)</b>
	IGRF2010	2/9/2012	8.77	67.06	53,082

<b>Design</b>	PLAN 1 (FEB 9 2012)			
<b>Audit Notes:</b>				
<b>Version:</b>	<b>Phase:</b>	PROTOTYPE	<b>Tie On Depth:</b>	0.0
<b>Vertical Section:</b>	<b>Depth From (TVD) (ft)</b>	<b>+N/-S (ft)</b>	<b>+E/-W (ft)</b>	<b>Direction (°)</b>
	0.0	0.0	0.0	284.21

<b>Plan Sections</b>										
Measured Depth (ft)	Inclination (°)	Azimuth (°)	Vertical Depth (ft)	+N/-S (ft)	+E/-W (ft)	Dogleg Rate (°/100ft)	Build Rate (°/100ft)	Turn Rate (°/100ft)	TFO (°)	Target
0.0	0.00	0.00	0.0	0.0	0.0	0.00	0.00	0.00	0.00	
200.0	0.00	0.00	200.0	0.0	0.0	0.00	0.00	0.00	0.00	
1,227.0	20.54	49.27	1,205.1	118.8	138.0	2.00	2.00	0.00	49.27	
4,740.1	20.54	49.27	4,494.9	923.1	1,072.0	0.00	0.00	0.00	0.00	
5,767.0	0.00	0.00	5,500.0	1,042.0	1,210.0	2.00	-2.00	0.00	180.00	
6,596.2	0.00	0.00	6,329.1	1,042.0	1,210.0	0.00	0.00	0.00	0.00	
7,414.3	90.00	269.35	6,850.0	1,036.0	689.2	11.00	11.00	0.00	269.35	
11,990.0	90.00	269.35	6,850.0	984.0	-3,886.2	0.00	0.00	0.00	0.00	BHL 1341'FNL & 46

<b>Database:</b>	Landmark	<b>Local Co-ordinate Reference:</b>	Well BESTWAY 12-2
<b>Company:</b>	Mineral Resources Inc	<b>TVD Reference:</b>	RKB @ 4714.0ft (RKB RIG 14)
<b>Project:</b>	SEC.2-T5N-R66W	<b>MD Reference:</b>	RKB @ 4714.0ft (RKB RIG 14)
<b>Site:</b>	BESTWAY HOR PAD 2-5N-66W	<b>North Reference:</b>	True
<b>Well:</b>	BESTWAY 12-2	<b>Survey Calculation Method:</b>	Minimum Curvature
<b>Wellbore:</b>	Wellbore #1		
<b>Design:</b>	PLAN 1 (FEB 9 2012)		

Planned Survey									
Measured Depth (ft)	Inclination (°)	Azimuth (°)	Vertical Depth (ft)	+N/-S (ft)	+E/-W (ft)	Vertical Section (ft)	Dogleg Rate (°/100ft)	Build Rate (°/100ft)	Turn Rate (°/100ft)
0.0	0.00	0.00	0.0	0.0	0.0	0.0	0.00	0.00	0.00
1.0	0.00	0.00	1.0	0.0	0.0	0.0	0.00	0.00	0.00
<b>HARDLINE BHL 460'FWL - HARDLINE 460'FEL</b>									
40.0	0.00	0.00	40.0	0.0	0.0	0.0	0.00	0.00	0.00
80.0	0.00	0.00	80.0	0.0	0.0	0.0	0.00	0.00	0.00
120.0	0.00	0.00	120.0	0.0	0.0	0.0	0.00	0.00	0.00
160.0	0.00	0.00	160.0	0.0	0.0	0.0	0.00	0.00	0.00
200.0	0.00	0.00	200.0	0.0	0.0	0.0	0.00	0.00	0.00
<b>KOP #1</b>									
240.0	0.80	49.27	240.0	0.2	0.2	-0.2	2.00	2.00	0.00
280.0	1.60	49.27	280.0	0.7	0.8	-0.6	2.00	2.00	0.00
320.0	2.40	49.27	320.0	1.6	1.9	-1.4	2.00	2.00	0.00
360.0	3.20	49.27	359.9	2.9	3.4	-2.6	2.00	2.00	0.00
400.0	4.00	49.27	399.8	4.6	5.3	-4.0	2.00	2.00	0.00
440.0	4.80	49.27	439.7	6.6	7.6	-5.8	2.00	2.00	0.00
480.0	5.60	49.27	479.6	8.9	10.4	-7.9	2.00	2.00	0.00
520.0	6.40	49.27	519.3	11.6	13.5	-10.3	2.00	2.00	0.00
560.0	7.20	49.27	559.1	14.7	17.1	-13.0	2.00	2.00	0.00
600.0	8.00	49.27	598.7	18.2	21.1	-16.0	2.00	2.00	0.00
640.0	8.80	49.27	638.3	22.0	25.6	-19.4	2.00	2.00	0.00
680.0	9.60	49.27	677.8	26.2	30.4	-23.0	2.00	2.00	0.00
720.0	10.40	49.27	717.1	30.7	35.7	-27.0	2.00	2.00	0.00
760.0	11.20	49.27	756.4	35.6	41.3	-31.3	2.00	2.00	0.00
800.0	12.00	49.27	795.6	40.8	47.4	-36.0	2.00	2.00	0.00
840.0	12.80	49.27	834.7	46.5	53.9	-40.9	2.00	2.00	0.00
880.0	13.60	49.27	873.6	52.4	60.9	-46.1	2.00	2.00	0.00
920.0	14.40	49.27	912.4	58.7	68.2	-51.7	2.00	2.00	0.00
960.0	15.20	49.27	951.1	65.4	75.9	-57.6	2.00	2.00	0.00
1,000.0	16.00	49.27	989.6	72.4	84.1	-63.7	2.00	2.00	0.00
1,040.0	16.80	49.27	1,028.0	79.8	92.7	-70.2	2.00	2.00	0.00
1,080.0	17.60	49.27	1,066.2	87.5	101.6	-77.0	2.00	2.00	0.00
1,120.0	18.40	49.27	1,104.3	95.6	111.0	-84.1	2.00	2.00	0.00
1,160.0	19.20	49.27	1,142.1	104.0	120.7	-91.5	2.00	2.00	0.00
1,200.0	20.00	49.27	1,179.8	112.7	130.9	-99.2	2.00	2.00	0.00
1,227.0	20.54	49.27	1,205.1	118.8	138.0	-104.6	2.00	2.00	0.00
1,240.0	20.54	49.27	1,217.3	121.8	141.5	-107.2	0.00	0.00	0.00
1,280.0	20.54	49.27	1,254.8	131.0	152.1	-115.3	0.00	0.00	0.00
1,320.0	20.54	49.27	1,292.2	140.1	162.7	-123.4	0.00	0.00	0.00
1,360.0	20.54	49.27	1,329.7	149.3	173.4	-131.4	0.00	0.00	0.00
1,400.0	20.54	49.27	1,367.1	158.4	184.0	-139.5	0.00	0.00	0.00
1,440.0	20.54	49.27	1,404.6	167.6	194.6	-147.5	0.00	0.00	0.00
1,480.0	20.54	49.27	1,442.1	176.8	205.3	-155.6	0.00	0.00	0.00
1,520.0	20.54	49.27	1,479.5	185.9	215.9	-163.7	0.00	0.00	0.00
1,560.0	20.54	49.27	1,517.0	195.1	226.5	-171.7	0.00	0.00	0.00
1,600.0	20.54	49.27	1,554.4	204.2	237.2	-179.8	0.00	0.00	0.00
1,640.0	20.54	49.27	1,591.9	213.4	247.8	-187.9	0.00	0.00	0.00
1,680.0	20.54	49.27	1,629.3	222.5	258.4	-195.9	0.00	0.00	0.00
1,720.0	20.54	49.27	1,666.8	231.7	269.1	-204.0	0.00	0.00	0.00
1,760.0	20.54	49.27	1,704.3	240.9	279.7	-212.0	0.00	0.00	0.00
1,800.0	20.54	49.27	1,741.7	250.0	290.3	-220.1	0.00	0.00	0.00
1,840.0	20.54	49.27	1,779.2	259.2	301.0	-228.2	0.00	0.00	0.00
1,880.0	20.54	49.27	1,816.6	268.3	311.6	-236.2	0.00	0.00	0.00
1,920.0	20.54	49.27	1,854.1	277.5	322.2	-244.3	0.00	0.00	0.00
1,960.0	20.54	49.27	1,891.5	286.7	332.9	-252.3	0.00	0.00	0.00

<b>Database:</b>	Landmark	<b>Local Co-ordinate Reference:</b>	Well BESTWAY 12-2
<b>Company:</b>	Mineral Resources Inc	<b>TVD Reference:</b>	RKB @ 4714.0ft (RKB RIG 14)
<b>Project:</b>	SEC.2-T5N-R66W	<b>MD Reference:</b>	RKB @ 4714.0ft (RKB RIG 14)
<b>Site:</b>	BESTWAY HOR PAD 2-5N-66W	<b>North Reference:</b>	True
<b>Well:</b>	BESTWAY 12-2	<b>Survey Calculation Method:</b>	Minimum Curvature
<b>Wellbore:</b>	Wellbore #1		
<b>Design:</b>	PLAN 1 (FEB 9 2012)		

Planned Survey									
Measured Depth (ft)	Inclination (°)	Azimuth (°)	Vertical Depth (ft)	+N/-S (ft)	+E/-W (ft)	Vertical Section (ft)	Dogleg Rate (°/100ft)	Build Rate (°/100ft)	Turn Rate (°/100ft)
2,000.0	20.54	49.27	1,929.0	295.8	343.5	-260.4	0.00	0.00	0.00
2,040.0	20.54	49.27	1,966.5	305.0	354.2	-268.5	0.00	0.00	0.00
2,080.0	20.54	49.27	2,003.9	314.1	364.8	-276.5	0.00	0.00	0.00
2,120.0	20.54	49.27	2,041.4	323.3	375.4	-284.6	0.00	0.00	0.00
2,160.0	20.54	49.27	2,078.8	332.4	386.1	-292.7	0.00	0.00	0.00
2,200.0	20.54	49.27	2,116.3	341.6	396.7	-300.7	0.00	0.00	0.00
2,240.0	20.54	49.27	2,153.7	350.8	407.3	-308.8	0.00	0.00	0.00
2,280.0	20.54	49.27	2,191.2	359.9	418.0	-316.8	0.00	0.00	0.00
2,320.0	20.54	49.27	2,228.7	369.1	428.6	-324.9	0.00	0.00	0.00
2,360.0	20.54	49.27	2,266.1	378.2	439.2	-333.0	0.00	0.00	0.00
2,400.0	20.54	49.27	2,303.6	387.4	449.9	-341.0	0.00	0.00	0.00
2,440.0	20.54	49.27	2,341.0	396.5	460.5	-349.1	0.00	0.00	0.00
2,480.0	20.54	49.27	2,378.5	405.7	471.1	-357.1	0.00	0.00	0.00
2,520.0	20.54	49.27	2,415.9	414.9	481.8	-365.2	0.00	0.00	0.00
2,560.0	20.54	49.27	2,453.4	424.0	492.4	-373.3	0.00	0.00	0.00
2,600.0	20.54	49.27	2,490.9	433.2	503.0	-381.3	0.00	0.00	0.00
2,640.0	20.54	49.27	2,528.3	442.3	513.7	-389.4	0.00	0.00	0.00
2,680.0	20.54	49.27	2,565.8	451.5	524.3	-397.5	0.00	0.00	0.00
2,720.0	20.54	49.27	2,603.2	460.6	534.9	-405.5	0.00	0.00	0.00
2,760.0	20.54	49.27	2,640.7	469.8	545.6	-413.6	0.00	0.00	0.00
2,800.0	20.54	49.27	2,678.1	479.0	556.2	-421.6	0.00	0.00	0.00
2,840.0	20.54	49.27	2,715.6	488.1	566.8	-429.7	0.00	0.00	0.00
2,880.0	20.54	49.27	2,753.1	497.3	577.5	-437.8	0.00	0.00	0.00
2,920.0	20.54	49.27	2,790.5	506.4	588.1	-445.8	0.00	0.00	0.00
2,960.0	20.54	49.27	2,828.0	515.6	598.7	-453.9	0.00	0.00	0.00
3,000.0	20.54	49.27	2,865.4	524.8	609.4	-461.9	0.00	0.00	0.00
3,040.0	20.54	49.27	2,902.9	533.9	620.0	-470.0	0.00	0.00	0.00
3,080.0	20.54	49.27	2,940.3	543.1	630.7	-478.1	0.00	0.00	0.00
3,120.0	20.54	49.27	2,977.8	552.2	641.3	-486.1	0.00	0.00	0.00
3,160.0	20.54	49.27	3,015.3	561.4	651.9	-494.2	0.00	0.00	0.00
3,200.0	20.54	49.27	3,052.7	570.5	662.6	-502.3	0.00	0.00	0.00
3,240.0	20.54	49.27	3,090.2	579.7	673.2	-510.3	0.00	0.00	0.00
3,280.0	20.54	49.27	3,127.6	588.9	683.8	-518.4	0.00	0.00	0.00
3,320.0	20.54	49.27	3,165.1	598.0	694.5	-526.4	0.00	0.00	0.00
3,360.0	20.54	49.27	3,202.5	607.2	705.1	-534.5	0.00	0.00	0.00
3,400.0	20.54	49.27	3,240.0	616.3	715.7	-542.6	0.00	0.00	0.00
3,440.0	20.54	49.27	3,277.5	625.5	726.4	-550.6	0.00	0.00	0.00
3,480.0	20.54	49.27	3,314.9	634.6	737.0	-558.7	0.00	0.00	0.00
3,520.0	20.54	49.27	3,352.4	643.8	747.6	-566.7	0.00	0.00	0.00
3,560.0	20.54	49.27	3,389.8	653.0	758.3	-574.8	0.00	0.00	0.00
3,600.0	20.54	49.27	3,427.3	662.1	768.9	-582.9	0.00	0.00	0.00
3,640.0	20.54	49.27	3,464.8	671.3	779.5	-590.9	0.00	0.00	0.00
3,680.0	20.54	49.27	3,502.2	680.4	790.2	-599.0	0.00	0.00	0.00
3,720.0	20.54	49.27	3,539.7	689.6	800.8	-607.1	0.00	0.00	0.00
3,760.0	20.54	49.27	3,577.1	698.7	811.4	-615.1	0.00	0.00	0.00
3,800.0	20.54	49.27	3,614.6	707.9	822.1	-623.2	0.00	0.00	0.00
3,840.0	20.54	49.27	3,652.0	717.1	832.7	-631.2	0.00	0.00	0.00
3,880.0	20.54	49.27	3,689.5	726.2	843.3	-639.3	0.00	0.00	0.00
3,920.0	20.54	49.27	3,727.0	735.4	854.0	-647.4	0.00	0.00	0.00
3,960.0	20.54	49.27	3,764.4	744.5	864.6	-655.4	0.00	0.00	0.00
4,000.0	20.54	49.27	3,801.9	753.7	875.2	-663.5	0.00	0.00	0.00
4,040.0	20.54	49.27	3,839.3	762.9	885.9	-671.5	0.00	0.00	0.00
4,080.0	20.54	49.27	3,876.8	772.0	896.5	-679.6	0.00	0.00	0.00
4,120.0	20.54	49.27	3,914.2	781.2	907.1	-687.7	0.00	0.00	0.00

<b>Database:</b>	Landmark	<b>Local Co-ordinate Reference:</b>	Well BESTWAY 12-2
<b>Company:</b>	Mineral Resources Inc	<b>TVD Reference:</b>	RKB @ 4714.0ft (RKB RIG 14)
<b>Project:</b>	SEC.2-T5N-R66W	<b>MD Reference:</b>	RKB @ 4714.0ft (RKB RIG 14)
<b>Site:</b>	BESTWAY HOR PAD 2-5N-66W	<b>North Reference:</b>	True
<b>Well:</b>	BESTWAY 12-2	<b>Survey Calculation Method:</b>	Minimum Curvature
<b>Wellbore:</b>	Wellbore #1		
<b>Design:</b>	PLAN 1 (FEB 9 2012)		

Planned Survey									
Measured Depth (ft)	Inclination (°)	Azimuth (°)	Vertical Depth (ft)	+N/-S (ft)	+E/-W (ft)	Vertical Section (ft)	Dogleg Rate (°/100ft)	Build Rate (°/100ft)	Turn Rate (°/100ft)
4,160.0	20.54	49.27	3,951.7	790.3	917.8	-695.7	0.00	0.00	0.00
4,200.0	20.54	49.27	3,989.2	799.5	928.4	-703.8	0.00	0.00	0.00
4,240.0	20.54	49.27	4,026.6	808.6	939.1	-711.9	0.00	0.00	0.00
4,280.0	20.54	49.27	4,064.1	817.8	949.7	-719.9	0.00	0.00	0.00
4,320.0	20.54	49.27	4,101.5	827.0	960.3	-728.0	0.00	0.00	0.00
4,360.0	20.54	49.27	4,139.0	836.1	971.0	-736.0	0.00	0.00	0.00
4,400.0	20.54	49.27	4,176.4	845.3	981.6	-744.1	0.00	0.00	0.00
4,440.0	20.54	49.27	4,213.9	854.4	992.2	-752.2	0.00	0.00	0.00
4,480.0	20.54	49.27	4,251.4	863.6	1,002.9	-760.2	0.00	0.00	0.00
4,520.0	20.54	49.27	4,288.8	872.7	1,013.5	-768.3	0.00	0.00	0.00
4,560.0	20.54	49.27	4,326.3	881.9	1,024.1	-776.3	0.00	0.00	0.00
4,600.0	20.54	49.27	4,363.7	891.1	1,034.8	-784.4	0.00	0.00	0.00
4,640.0	20.54	49.27	4,401.2	900.2	1,045.4	-792.5	0.00	0.00	0.00
4,680.0	20.54	49.27	4,438.6	909.4	1,056.0	-800.5	0.00	0.00	0.00
4,720.0	20.54	49.27	4,476.1	918.5	1,066.7	-808.6	0.00	0.00	0.00
4,740.1	20.54	49.27	4,494.9	923.1	1,072.0	-812.6	0.00	0.00	0.00
4,760.0	20.14	49.27	4,513.6	927.6	1,077.3	-816.6	2.00	-2.00	0.00
4,800.0	19.34	49.27	4,551.2	936.5	1,087.5	-824.4	2.00	-2.00	0.00
4,840.0	18.54	49.27	4,589.1	944.9	1,097.3	-831.8	2.00	-2.00	0.00
4,880.0	17.74	49.27	4,627.1	953.1	1,106.8	-839.0	2.00	-2.00	0.00
4,920.0	16.94	49.27	4,665.3	960.8	1,115.8	-845.8	2.00	-2.00	0.00
4,960.0	16.14	49.27	4,703.6	968.3	1,124.4	-852.4	2.00	-2.00	0.00
5,000.0	15.34	49.27	4,742.1	975.4	1,132.7	-858.6	2.00	-2.00	0.00
5,040.0	14.54	49.27	4,780.7	982.1	1,140.5	-864.5	2.00	-2.00	0.00
5,080.0	13.74	49.27	4,819.5	988.5	1,147.9	-870.1	2.00	-2.00	0.00
5,120.0	12.94	49.27	4,858.5	994.5	1,154.9	-875.4	2.00	-2.00	0.00
5,160.0	12.14	49.27	4,897.5	1,000.1	1,161.4	-880.4	2.00	-2.00	0.00
5,200.0	11.34	49.27	4,936.7	1,005.5	1,167.6	-885.1	2.00	-2.00	0.00
5,240.0	10.54	49.27	4,975.9	1,010.4	1,173.4	-889.5	2.00	-2.00	0.00
5,280.0	9.74	49.27	5,015.3	1,015.0	1,178.7	-893.5	2.00	-2.00	0.00
5,320.0	8.94	49.27	5,054.8	1,019.2	1,183.6	-897.2	2.00	-2.00	0.00
5,360.0	8.14	49.27	5,094.3	1,023.1	1,188.1	-900.7	2.00	-2.00	0.00
5,400.0	7.34	49.27	5,134.0	1,026.6	1,192.2	-903.8	2.00	-2.00	0.00
5,440.0	6.54	49.27	5,173.7	1,029.8	1,195.9	-906.5	2.00	-2.00	0.00
5,480.0	5.74	49.27	5,213.4	1,032.6	1,199.1	-909.0	2.00	-2.00	0.00
5,520.0	4.94	49.27	5,253.3	1,035.0	1,201.9	-911.1	2.00	-2.00	0.00
5,560.0	4.14	49.27	5,293.1	1,037.1	1,204.3	-912.9	2.00	-2.00	0.00
5,600.0	3.34	49.27	5,333.1	1,038.8	1,206.3	-914.4	2.00	-2.00	0.00
5,640.0	2.54	49.27	5,373.0	1,040.1	1,207.9	-915.6	2.00	-2.00	0.00
5,680.0	1.74	49.27	5,413.0	1,041.1	1,209.0	-916.5	2.00	-2.00	0.00
5,720.0	0.94	49.27	5,453.0	1,041.7	1,209.7	-917.0	2.00	-2.00	0.00
5,760.0	0.14	49.27	5,493.0	1,042.0	1,210.0	-917.2	2.00	-2.00	0.00
5,767.0	0.00	0.00	5,500.0	1,042.0	1,210.0	-917.2	2.00	-2.00	0.00
5,800.0	0.00	0.00	5,533.0	1,042.0	1,210.0	-917.2	0.00	0.00	0.00
5,840.0	0.00	0.00	5,573.0	1,042.0	1,210.0	-917.2	0.00	0.00	0.00
5,880.0	0.00	0.00	5,613.0	1,042.0	1,210.0	-917.2	0.00	0.00	0.00
5,920.0	0.00	0.00	5,653.0	1,042.0	1,210.0	-917.2	0.00	0.00	0.00
5,960.0	0.00	0.00	5,693.0	1,042.0	1,210.0	-917.2	0.00	0.00	0.00
6,000.0	0.00	0.00	5,733.0	1,042.0	1,210.0	-917.2	0.00	0.00	0.00
6,040.0	0.00	0.00	5,773.0	1,042.0	1,210.0	-917.2	0.00	0.00	0.00
6,080.0	0.00	0.00	5,813.0	1,042.0	1,210.0	-917.2	0.00	0.00	0.00
6,120.0	0.00	0.00	5,853.0	1,042.0	1,210.0	-917.2	0.00	0.00	0.00
6,160.0	0.00	0.00	5,893.0	1,042.0	1,210.0	-917.2	0.00	0.00	0.00
6,200.0	0.00	0.00	5,933.0	1,042.0	1,210.0	-917.2	0.00	0.00	0.00

<b>Database:</b>	Landmark	<b>Local Co-ordinate Reference:</b>	Well BESTWAY 12-2
<b>Company:</b>	Mineral Resources Inc	<b>TVD Reference:</b>	RKB @ 4714.0ft (RKB RIG 14)
<b>Project:</b>	SEC.2-T5N-R66W	<b>MD Reference:</b>	RKB @ 4714.0ft (RKB RIG 14)
<b>Site:</b>	BESTWAY HOR PAD 2-5N-66W	<b>North Reference:</b>	True
<b>Well:</b>	BESTWAY 12-2	<b>Survey Calculation Method:</b>	Minimum Curvature
<b>Wellbore:</b>	Wellbore #1		
<b>Design:</b>	PLAN 1 (FEB 9 2012)		

Planned Survey									
Measured Depth (ft)	Inclination (°)	Azimuth (°)	Vertical Depth (ft)	+N/-S (ft)	+E/-W (ft)	Vertical Section (ft)	Dogleg Rate (°/100ft)	Build Rate (°/100ft)	Turn Rate (°/100ft)
6,240.0	0.00	0.00	5,973.0	1,042.0	1,210.0	-917.2	0.00	0.00	0.00
6,280.0	0.00	0.00	6,013.0	1,042.0	1,210.0	-917.2	0.00	0.00	0.00
6,320.0	0.00	0.00	6,053.0	1,042.0	1,210.0	-917.2	0.00	0.00	0.00
6,360.0	0.00	0.00	6,093.0	1,042.0	1,210.0	-917.2	0.00	0.00	0.00
6,400.0	0.00	0.00	6,133.0	1,042.0	1,210.0	-917.2	0.00	0.00	0.00
6,440.0	0.00	0.00	6,173.0	1,042.0	1,210.0	-917.2	0.00	0.00	0.00
6,480.0	0.00	0.00	6,213.0	1,042.0	1,210.0	-917.2	0.00	0.00	0.00
6,520.0	0.00	0.00	6,253.0	1,042.0	1,210.0	-917.2	0.00	0.00	0.00
6,560.0	0.00	0.00	6,293.0	1,042.0	1,210.0	-917.2	0.00	0.00	0.00
6,596.2	0.00	0.00	6,329.2	1,042.0	1,210.0	-917.2	0.00	0.00	0.00
<b>KOP #2</b>									
6,600.0	0.42	269.35	6,333.0	1,042.0	1,210.0	-917.2	11.11	11.11	0.00
6,640.0	4.82	269.35	6,372.9	1,041.9	1,208.2	-915.5	11.00	11.00	0.00
6,680.0	9.22	269.35	6,412.6	1,041.9	1,203.3	-910.7	11.00	11.00	0.00
6,720.0	13.62	269.35	6,451.8	1,041.8	1,195.3	-903.1	11.00	11.00	0.00
6,760.0	18.02	269.35	6,490.3	1,041.7	1,184.4	-892.5	11.00	11.00	0.00
6,800.0	22.42	269.35	6,527.8	1,041.5	1,170.6	-879.2	11.00	11.00	0.00
6,840.0	26.82	269.35	6,564.2	1,041.3	1,154.0	-863.1	11.00	11.00	0.00
6,880.0	31.22	269.35	6,599.1	1,041.1	1,134.6	-844.3	11.00	11.00	0.00
6,920.0	35.62	269.35	6,632.5	1,040.8	1,112.5	-823.0	11.00	11.00	0.00
6,960.0	40.02	269.35	6,664.1	1,040.6	1,088.0	-799.3	11.00	11.00	0.00
7,000.0	44.42	269.35	6,693.7	1,040.3	1,061.1	-773.4	11.00	11.00	0.00
7,040.0	48.82	269.35	6,721.2	1,039.9	1,032.1	-745.3	11.00	11.00	0.00
7,080.0	53.22	269.35	6,746.3	1,039.6	1,001.0	-715.2	11.00	11.00	0.00
7,120.0	57.62	269.35	6,769.0	1,039.2	968.1	-683.4	11.00	11.00	0.00
7,160.0	62.02	269.35	6,789.1	1,038.8	933.5	-650.0	11.00	11.00	0.00
7,200.0	66.42	269.35	6,806.5	1,038.4	897.5	-615.2	11.00	11.00	0.00
7,240.0	70.82	269.35	6,821.1	1,038.0	860.3	-579.2	11.00	11.00	0.00
7,280.0	75.22	269.35	6,832.8	1,037.5	822.0	-542.2	11.00	11.00	0.00
7,320.0	79.62	269.35	6,841.5	1,037.1	783.0	-504.5	11.00	11.00	0.00
7,360.0	84.02	269.35	6,847.2	1,036.6	743.4	-466.2	11.00	11.00	0.00
7,374.1	85.58	269.35	6,848.4	1,036.5	729.3	-452.6	11.00	11.00	0.00
<b>T1 1340'FNL &amp; 460'FEL</b>									
7,400.0	88.42	269.35	6,849.8	1,036.2	703.5	-427.7	11.00	11.00	0.00
7,414.3	89.99	269.35	6,850.0	1,036.0	689.2	-413.8	11.00	11.00	0.00
<b>7"</b>									
7,440.0	90.00	269.35	6,850.0	1,035.7	663.5	-389.0	0.02	0.02	0.00
7,480.0	90.00	269.35	6,850.0	1,035.3	623.5	-350.3	0.00	0.00	0.00
7,520.0	90.00	269.35	6,850.0	1,034.8	583.5	-311.7	0.00	0.00	0.00
7,560.0	90.00	269.35	6,850.0	1,034.4	543.5	-273.0	0.00	0.00	0.00
7,600.0	90.00	269.35	6,850.0	1,033.9	503.5	-234.3	0.00	0.00	0.00
7,640.0	90.00	269.35	6,850.0	1,033.5	463.5	-195.7	0.00	0.00	0.00
7,680.0	90.00	269.35	6,850.0	1,033.0	423.5	-157.0	0.00	0.00	0.00
7,720.0	90.00	269.35	6,850.0	1,032.6	383.5	-118.4	0.00	0.00	0.00
7,760.0	90.00	269.35	6,850.0	1,032.1	343.5	-79.7	0.00	0.00	0.00
7,800.0	90.00	269.35	6,850.0	1,031.6	303.5	-41.0	0.00	0.00	0.00
7,840.0	90.00	269.35	6,850.0	1,031.2	263.5	-2.4	0.00	0.00	0.00
7,880.0	90.00	269.35	6,850.0	1,030.7	223.5	36.3	0.00	0.00	0.00
7,920.0	90.00	269.35	6,850.0	1,030.3	183.5	75.0	0.00	0.00	0.00
7,960.0	90.00	269.35	6,850.0	1,029.8	143.5	113.6	0.00	0.00	0.00
8,000.0	90.00	269.35	6,850.0	1,029.4	103.5	152.3	0.00	0.00	0.00
8,040.0	90.00	269.35	6,850.0	1,028.9	63.5	190.9	0.00	0.00	0.00
8,080.0	90.00	269.35	6,850.0	1,028.5	23.6	229.6	0.00	0.00	0.00



<b>Database:</b>	Landmark	<b>Local Co-ordinate Reference:</b>	Well BESTWAY 12-2
<b>Company:</b>	Mineral Resources Inc	<b>TVD Reference:</b>	RKB @ 4714.0ft (RKB RIG 14)
<b>Project:</b>	SEC.2-T5N-R66W	<b>MD Reference:</b>	RKB @ 4714.0ft (RKB RIG 14)
<b>Site:</b>	BESTWAY HOR PAD 2-5N-66W	<b>North Reference:</b>	True
<b>Well:</b>	BESTWAY 12-2	<b>Survey Calculation Method:</b>	Minimum Curvature
<b>Wellbore:</b>	Wellbore #1		
<b>Design:</b>	PLAN 1 (FEB 9 2012)		

Planned Survey									
Measured Depth (ft)	Inclination (°)	Azimuth (°)	Vertical Depth (ft)	+N/-S (ft)	+E/-W (ft)	Vertical Section (ft)	Dogleg Rate (°/100ft)	Build Rate (°/100ft)	Turn Rate (°/100ft)
8,120.0	90.00	269.35	6,850.0	1,028.0	-16.4	268.3	0.00	0.00	0.00
8,160.0	90.00	269.35	6,850.0	1,027.5	-56.4	306.9	0.00	0.00	0.00
8,200.0	90.00	269.35	6,850.0	1,027.1	-96.4	345.6	0.00	0.00	0.00
8,240.0	90.00	269.35	6,850.0	1,026.6	-136.4	384.2	0.00	0.00	0.00
8,280.0	90.00	269.35	6,850.0	1,026.2	-176.4	422.9	0.00	0.00	0.00
8,320.0	90.00	269.35	6,850.0	1,025.7	-216.4	461.6	0.00	0.00	0.00
8,360.0	90.00	269.35	6,850.0	1,025.3	-256.4	500.2	0.00	0.00	0.00
8,400.0	90.00	269.35	6,850.0	1,024.8	-296.4	538.9	0.00	0.00	0.00
8,440.0	90.00	269.35	6,850.0	1,024.4	-336.4	577.6	0.00	0.00	0.00
8,480.0	90.00	269.35	6,850.0	1,023.9	-376.4	616.2	0.00	0.00	0.00
8,520.0	90.00	269.35	6,850.0	1,023.4	-416.4	654.9	0.00	0.00	0.00
8,560.0	90.00	269.35	6,850.0	1,023.0	-456.4	693.5	0.00	0.00	0.00
8,600.0	90.00	269.35	6,850.0	1,022.5	-496.4	732.2	0.00	0.00	0.00
8,640.0	90.00	269.35	6,850.0	1,022.1	-536.4	770.9	0.00	0.00	0.00
8,680.0	90.00	269.35	6,850.0	1,021.6	-576.4	809.5	0.00	0.00	0.00
8,720.0	90.00	269.35	6,850.0	1,021.2	-616.4	848.2	0.00	0.00	0.00
8,760.0	90.00	269.35	6,850.0	1,020.7	-656.4	886.9	0.00	0.00	0.00
8,800.0	90.00	269.35	6,850.0	1,020.3	-696.4	925.5	0.00	0.00	0.00
8,840.0	90.00	269.35	6,850.0	1,019.8	-736.4	964.2	0.00	0.00	0.00
8,880.0	90.00	269.35	6,850.0	1,019.4	-776.4	1,002.8	0.00	0.00	0.00
8,920.0	90.00	269.35	6,850.0	1,018.9	-816.4	1,041.5	0.00	0.00	0.00
8,960.0	90.00	269.35	6,850.0	1,018.4	-856.4	1,080.2	0.00	0.00	0.00
9,000.0	90.00	269.35	6,850.0	1,018.0	-896.4	1,118.8	0.00	0.00	0.00
9,040.0	90.00	269.35	6,850.0	1,017.5	-936.4	1,157.5	0.00	0.00	0.00
9,080.0	90.00	269.35	6,850.0	1,017.1	-976.4	1,196.2	0.00	0.00	0.00
9,120.0	90.00	269.35	6,850.0	1,016.6	-1,016.4	1,234.8	0.00	0.00	0.00
9,160.0	90.00	269.35	6,850.0	1,016.2	-1,056.4	1,273.5	0.00	0.00	0.00
9,200.0	90.00	269.35	6,850.0	1,015.7	-1,096.4	1,312.1	0.00	0.00	0.00
9,240.0	90.00	269.35	6,850.0	1,015.3	-1,136.4	1,350.8	0.00	0.00	0.00
9,280.0	90.00	269.35	6,850.0	1,014.8	-1,176.4	1,389.5	0.00	0.00	0.00
9,320.0	90.00	269.35	6,850.0	1,014.3	-1,216.4	1,428.1	0.00	0.00	0.00
9,360.0	90.00	269.35	6,850.0	1,013.9	-1,256.4	1,466.8	0.00	0.00	0.00
9,400.0	90.00	269.35	6,850.0	1,013.4	-1,296.4	1,505.5	0.00	0.00	0.00
9,440.0	90.00	269.35	6,850.0	1,013.0	-1,336.4	1,544.1	0.00	0.00	0.00
9,480.0	90.00	269.35	6,850.0	1,012.5	-1,376.4	1,582.8	0.00	0.00	0.00
9,520.0	90.00	269.35	6,850.0	1,012.1	-1,416.4	1,621.4	0.00	0.00	0.00
9,560.0	90.00	269.35	6,850.0	1,011.6	-1,456.4	1,660.1	0.00	0.00	0.00
9,600.0	90.00	269.35	6,850.0	1,011.2	-1,496.4	1,698.8	0.00	0.00	0.00
9,640.0	90.00	269.35	6,850.0	1,010.7	-1,536.3	1,737.4	0.00	0.00	0.00
9,680.0	90.00	269.35	6,850.0	1,010.2	-1,576.3	1,776.1	0.00	0.00	0.00
9,720.0	90.00	269.35	6,850.0	1,009.8	-1,616.3	1,814.7	0.00	0.00	0.00
9,760.0	90.00	269.35	6,850.0	1,009.3	-1,656.3	1,853.4	0.00	0.00	0.00
9,800.0	90.00	269.35	6,850.0	1,008.9	-1,696.3	1,892.1	0.00	0.00	0.00
9,840.0	90.00	269.35	6,850.0	1,008.4	-1,736.3	1,930.7	0.00	0.00	0.00
9,880.0	90.00	269.35	6,850.0	1,008.0	-1,776.3	1,969.4	0.00	0.00	0.00
9,920.0	90.00	269.35	6,850.0	1,007.5	-1,816.3	2,008.1	0.00	0.00	0.00
9,960.0	90.00	269.35	6,850.0	1,007.1	-1,856.3	2,046.7	0.00	0.00	0.00
10,000.0	90.00	269.35	6,850.0	1,006.6	-1,896.3	2,085.4	0.00	0.00	0.00
10,040.0	90.00	269.35	6,850.0	1,006.2	-1,936.3	2,124.0	0.00	0.00	0.00
10,080.0	90.00	269.35	6,850.0	1,005.7	-1,976.3	2,162.7	0.00	0.00	0.00
10,120.0	90.00	269.35	6,850.0	1,005.2	-2,016.3	2,201.4	0.00	0.00	0.00
10,160.0	90.00	269.35	6,850.0	1,004.8	-2,056.3	2,240.0	0.00	0.00	0.00
10,200.0	90.00	269.35	6,850.0	1,004.3	-2,096.3	2,278.7	0.00	0.00	0.00
10,240.0	90.00	269.35	6,850.0	1,003.9	-2,136.3	2,317.4	0.00	0.00	0.00



<b>Database:</b>	Landmark	<b>Local Co-ordinate Reference:</b>	Well BESTWAY 12-2
<b>Company:</b>	Mineral Resources Inc	<b>TVD Reference:</b>	RKB @ 4714.0ft (RKB RIG 14)
<b>Project:</b>	SEC.2-T5N-R66W	<b>MD Reference:</b>	RKB @ 4714.0ft (RKB RIG 14)
<b>Site:</b>	BESTWAY HOR PAD 2-5N-66W	<b>North Reference:</b>	True
<b>Well:</b>	BESTWAY 12-2	<b>Survey Calculation Method:</b>	Minimum Curvature
<b>Wellbore:</b>	Wellbore #1		
<b>Design:</b>	PLAN 1 (FEB 9 2012)		

Planned Survey									
Measured Depth (ft)	Inclination (°)	Azimuth (°)	Vertical Depth (ft)	+N/-S (ft)	+E/-W (ft)	Vertical Section (ft)	Dogleg Rate (°/100ft)	Build Rate (°/100ft)	Turn Rate (°/100ft)
10,280.0	90.00	269.35	6,850.0	1,003.4	-2,176.3	2,356.0	0.00	0.00	0.00
10,320.0	90.00	269.35	6,850.0	1,003.0	-2,216.3	2,394.7	0.00	0.00	0.00
10,360.0	90.00	269.35	6,850.0	1,002.5	-2,256.3	2,433.3	0.00	0.00	0.00
10,400.0	90.00	269.35	6,850.0	1,002.1	-2,296.3	2,472.0	0.00	0.00	0.00
10,440.0	90.00	269.35	6,850.0	1,001.6	-2,336.3	2,510.7	0.00	0.00	0.00
10,480.0	90.00	269.35	6,850.0	1,001.1	-2,376.3	2,549.3	0.00	0.00	0.00
10,520.0	90.00	269.35	6,850.0	1,000.7	-2,416.3	2,588.0	0.00	0.00	0.00
10,560.0	90.00	269.35	6,850.0	1,000.2	-2,456.3	2,626.7	0.00	0.00	0.00
10,600.0	90.00	269.35	6,850.0	999.8	-2,496.3	2,665.3	0.00	0.00	0.00
10,640.0	90.00	269.35	6,850.0	999.3	-2,536.3	2,704.0	0.00	0.00	0.00
10,680.0	90.00	269.35	6,850.0	998.9	-2,576.3	2,742.6	0.00	0.00	0.00
10,720.0	90.00	269.35	6,850.0	998.4	-2,616.3	2,781.3	0.00	0.00	0.00
10,760.0	90.00	269.35	6,850.0	998.0	-2,656.3	2,820.0	0.00	0.00	0.00
10,800.0	90.00	269.35	6,850.0	997.5	-2,696.3	2,858.6	0.00	0.00	0.00
10,840.0	90.00	269.35	6,850.0	997.0	-2,736.3	2,897.3	0.00	0.00	0.00
10,880.0	90.00	269.35	6,850.0	996.6	-2,776.3	2,936.0	0.00	0.00	0.00
10,920.0	90.00	269.35	6,850.0	996.1	-2,816.3	2,974.6	0.00	0.00	0.00
10,960.0	90.00	269.35	6,850.0	995.7	-2,856.3	3,013.3	0.00	0.00	0.00
11,000.0	90.00	269.35	6,850.0	995.2	-2,896.3	3,051.9	0.00	0.00	0.00
11,040.0	90.00	269.35	6,850.0	994.8	-2,936.3	3,090.6	0.00	0.00	0.00
11,080.0	90.00	269.35	6,850.0	994.3	-2,976.3	3,129.3	0.00	0.00	0.00
11,120.0	90.00	269.35	6,850.0	993.9	-3,016.3	3,167.9	0.00	0.00	0.00
11,160.0	90.00	269.35	6,850.0	993.4	-3,056.2	3,206.6	0.00	0.00	0.00
11,200.0	90.00	269.35	6,850.0	993.0	-3,096.2	3,245.2	0.00	0.00	0.00
11,240.0	90.00	269.35	6,850.0	992.5	-3,136.2	3,283.9	0.00	0.00	0.00
11,280.0	90.00	269.35	6,850.0	992.0	-3,176.2	3,322.6	0.00	0.00	0.00
11,320.0	90.00	269.35	6,850.0	991.6	-3,216.2	3,361.2	0.00	0.00	0.00
11,360.0	90.00	269.35	6,850.0	991.1	-3,256.2	3,399.9	0.00	0.00	0.00
11,400.0	90.00	269.35	6,850.0	990.7	-3,296.2	3,438.6	0.00	0.00	0.00
11,440.0	90.00	269.35	6,850.0	990.2	-3,336.2	3,477.2	0.00	0.00	0.00
11,480.0	90.00	269.35	6,850.0	989.8	-3,376.2	3,515.9	0.00	0.00	0.00
11,520.0	90.00	269.35	6,850.0	989.3	-3,416.2	3,554.5	0.00	0.00	0.00
11,560.0	90.00	269.35	6,850.0	988.9	-3,456.2	3,593.2	0.00	0.00	0.00
11,600.0	90.00	269.35	6,850.0	988.4	-3,496.2	3,631.9	0.00	0.00	0.00
11,640.0	90.00	269.35	6,850.0	987.9	-3,536.2	3,670.5	0.00	0.00	0.00
11,680.0	90.00	269.35	6,850.0	987.5	-3,576.2	3,709.2	0.00	0.00	0.00
11,720.0	90.00	269.35	6,850.0	987.0	-3,616.2	3,747.9	0.00	0.00	0.00
11,760.0	90.00	269.35	6,850.0	986.6	-3,656.2	3,786.5	0.00	0.00	0.00
11,800.0	90.00	269.35	6,850.0	986.1	-3,696.2	3,825.2	0.00	0.00	0.00
11,840.0	90.00	269.35	6,850.0	985.7	-3,736.2	3,863.8	0.00	0.00	0.00
11,880.0	90.00	269.35	6,850.0	985.2	-3,776.2	3,902.5	0.00	0.00	0.00
11,920.0	90.00	269.35	6,850.0	984.8	-3,816.2	3,941.2	0.00	0.00	0.00
11,960.0	90.00	269.35	6,850.0	984.3	-3,856.2	3,979.8	0.00	0.00	0.00
11,990.0	90.00	269.35	6,850.0	984.0	-3,886.2	4,008.9	0.00	0.00	0.00
BHL 1341'FNL & 460'FWL									

<b>Database:</b>	Landmark	<b>Local Co-ordinate Reference:</b>	Well BESTWAY 12-2
<b>Company:</b>	Mineral Resources Inc	<b>TVD Reference:</b>	RKB @ 4714.0ft (RKB RIG 14)
<b>Project:</b>	SEC.2-T5N-R66W	<b>MD Reference:</b>	RKB @ 4714.0ft (RKB RIG 14)
<b>Site:</b>	BESTWAY HOR PAD 2-5N-66W	<b>North Reference:</b>	True
<b>Well:</b>	BESTWAY 12-2	<b>Survey Calculation Method:</b>	Minimum Curvature
<b>Wellbore:</b>	Wellbore #1		
<b>Design:</b>	PLAN 1 (FEB 9 2012)		

Targets									
Target Name									
- hit/miss target	Dip Angle	Dip Dir.	TVD	+N/-S	+E/-W	Northing	Easting	Latitude	Longitude
- Shape	(°)	(°)	(ft)	(ft)	(ft)	(ft)	(ft)		
HARDLINE BHL 460'f	0.00	0.00	1.0	1,384.0	-3,889.2	1,402,068.83	3,207,871.30	40.434678	-104.753241
- plan misses target center by 4128.1ft at 1.0ft MD (1.0 TVD, 0.0 N, 0.0 E)									
- Polygon									
Point 1			1.0	0.0	0.0	1,402,068.83	3,207,871.30		
Point 2			1.0	-800.0	0.0	1,401,268.89	3,207,878.17		
T1 1340'FNL & 460'Ff	0.00	0.00	6,850.0	1,042.0	729.4	1,401,766.43	3,212,492.45	40.433740	-104.736650
- plan misses target center by 5.7ft at 7374.1ft MD (6848.4 TVD, 1036.5 N, 729.3 E)									
- Point									
HARDLINE 460'FEL	0.00	0.00	1.0	1,442.0	729.4	1,402,166.44	3,212,489.05	40.434838	-104.736650
- plan misses target center by 1616.0ft at 1.0ft MD (1.0 TVD, 0.0 N, 0.0 E)									
- Polygon									
Point 1			1.0	0.0	0.0	1,402,166.44	3,212,489.05		
Point 2			1.0	-800.0	0.0	1,401,366.51	3,212,495.91		
BHL 1341'FNL & 460'	0.00	0.00	6,850.0	984.0	-3,886.2	1,401,668.85	3,207,877.70	40.433580	-104.753230
- plan hits target center									
- Point									

Casing Points					
Measured Depth	Vertical Depth		Name	Casing Diameter	Hole Diameter
(ft)	(ft)			(")	(")
7,414.3	6,850.0	7"		7	7-1/2

Plan Annotations					
Measured Depth	Vertical Depth	Local Coordinates			
(ft)	(ft)	+N/-S	+E/-W	Comment	
(ft)	(ft)	(ft)	(ft)		
200.0	200.0	0.0	0.0	KOP #1	
6,596.2	6,329.2	1,042.0	1,210.0	KOP #2	



# **Mineral Resources Inc**

**SEC.2-T5N-R66W**

**BESTWAY HOR PAD 2-5N-66W**

**BESTWAY 12-2**

**Wellbore #1**

**PLAN 1 (FEB 9 2012)**

## **Anticollision Report**

**15 February, 2012**

<b>Company:</b>	Mineral Resources Inc	<b>Local Co-ordinate Reference:</b>	Well BESTWAY 12-2
<b>Project:</b>	SEC.2-T5N-R66W	<b>TVD Reference:</b>	RKB @ 4714.0ft (RKB RIG 14)
<b>Reference Site:</b>	BESTWAY HOR PAD 2-5N-66W	<b>MD Reference:</b>	RKB @ 4714.0ft (RKB RIG 14)
<b>Site Error:</b>	0.0ft	<b>North Reference:</b>	True
<b>Reference Well:</b>	BESTWAY 12-2	<b>Survey Calculation Method:</b>	Minimum Curvature
<b>Well Error:</b>	0.0ft	<b>Output errors are at</b>	2.00 sigma
<b>Reference Wellbore</b>	Wellbore #1	<b>Database:</b>	Landmark
<b>Reference Design:</b>	PLAN 1 (FEB 9 2012)	<b>Offset TVD Reference:</b>	Offset Datum

<b>Reference</b>	PLAN 1 (FEB 9 2012)		
<b>Filter type:</b>	NO GLOBAL FILTER: Using user defined selection & filtering criteria		
<b>Interpolation Method:</b>	Stations	<b>Error Model:</b>	ISCWSA
<b>Depth Range:</b>	Unlimited	<b>Scan Method:</b>	Closest Approach 3D
<b>Results Limited by:</b>	Maximum center-center distance of 10,000.0ft	<b>Error Surface:</b>	Elliptical Conic
<b>Warning Levels Evaluated at:</b>	2.00 Sigma		

<b>Survey Tool Program</b>	<b>Date</b> 2/15/2012			
<b>From (ft)</b>	<b>To (ft)</b>	<b>Survey (Wellbore)</b>	<b>Tool Name</b>	<b>Description</b>
0.0	11,990.0	PLAN 1 (FEB 9 2012) (Wellbore #1)	MWD	MWD - Standard

<b>Summary</b>						
<b>Site Name</b>	<b>Reference Measured Depth (ft)</b>	<b>Offset Measured Depth (ft)</b>	<b>Distance Between Centres (ft)</b>	<b>Distance Between Ellipses (ft)</b>	<b>Separation Factor</b>	<b>Warning</b>
<b>Offset Well - Wellbore - Design</b>						
BESTWAY HOR PAD 2-5N-66W						
BESTWAY 6-11 - Wellbore #1 - PLAN 1 (FEB 9 2012)	200.0	202.0	61.9	61.2	91.228	CC, ES
BESTWAY 6-11 - Wellbore #1 - PLAN 1 (FEB 9 2012)	9,500.0	6,450.0	1,882.5	1,803.8	23.933	SF
POUDRE TRAIL 5 2-2-1 - Wellbore #1 - PLAN 1 (FEB 9 2012)	201.6	202.6	43.7	43.0	63.950	CC
POUDRE TRAIL 5 2-2-1 - Wellbore #1 - PLAN 1 (FEB 9 2012)	300.0	301.6	44.1	43.0	39.374	ES
POUDRE TRAIL 5 2-2-1 - Wellbore #1 - PLAN 1 (FEB 9 2012)	1,700.0	1,697.8	147.9	132.2	9.402	SF

<b>Offset Design</b> BESTWAY HOR PAD 2-5N-66W - BESTWAY 6-11 - Wellbore #1 - PLAN 1 (FEB 9 2012)													<b>Offset Site Error:</b> 0.0 ft
<b>Survey Program:</b> 0-MWD													<b>Offset Well Error:</b> 0.0 ft
<b>Reference</b>	<b>Offset</b>	<b>Semi Major Axis</b>			<b>Distance</b>								<b>Warning</b>
<b>Measured Depth (ft)</b>	<b>Vertical Depth (ft)</b>	<b>Measured Depth (ft)</b>	<b>Vertical Depth (ft)</b>	<b>Reference (ft)</b>	<b>Offset (ft)</b>	<b>Highside Toolface (°)</b>	<b>Offset Wellbore Centre +N/-S (ft)</b>	<b>+E/-W (ft)</b>	<b>Between Centres (ft)</b>	<b>Between Ellipses (ft)</b>	<b>Minimum Separation (ft)</b>	<b>Separation Factor</b>	
0.0	0.0	2.0	2.0	0.0	0.0	180.00	-61.9	0.0	61.9	61.9	0.00	N/A	
100.0	100.0	102.0	102.0	0.1	0.1	180.00	-61.9	0.0	61.9	61.7	0.23	270.108	
200.0	200.0	202.0	202.0	0.3	0.3	180.00	-61.9	0.0	61.9	61.2	0.68	91.228	CC, ES
300.0	300.0	302.0	302.0	0.6	0.6	131.92	-61.9	0.0	63.1	61.9	1.13	55.885	
400.0	399.8	401.8	401.8	0.8	0.8	135.21	-61.9	0.0	66.7	65.1	1.59	42.055	
500.0	499.5	501.5	501.5	1.0	1.0	139.94	-61.9	0.0	73.1	71.1	2.05	35.598	
600.0	598.7	600.7	600.7	1.3	1.2	145.24	-61.9	0.0	82.9	80.3	2.53	32.713	
700.0	697.5	699.5	699.5	1.7	1.5	150.42	-61.9	0.0	96.2	93.1	3.02	31.889	
800.0	795.6	797.6	797.6	2.0	1.7	155.03	-61.9	0.0	113.2	109.7	3.50	32.360	
900.0	893.1	895.1	895.1	2.5	1.9	158.93	-61.9	0.0	134.0	130.0	3.98	33.677	
1,000.0	989.6	991.6	991.6	3.0	2.1	162.13	-61.9	0.0	158.5	154.0	4.46	35.557	
1,100.0	1,085.3	1,087.3	1,087.3	3.5	2.3	164.72	-61.9	0.0	186.6	181.7	4.93	37.815	
1,200.0	1,179.8	1,181.8	1,181.8	4.1	2.5	166.82	-61.9	0.0	218.3	212.9	5.41	40.331	
1,227.0	1,205.1	1,207.1	1,207.1	4.3	2.6	167.31	-61.9	0.0	227.4	221.9	5.54	41.043	
1,300.0	1,273.5	1,275.5	1,275.5	4.8	2.8	168.58	-61.9	0.0	252.5	246.6	5.90	42.775	
1,400.0	1,367.1	1,369.1	1,369.1	5.5	3.0	169.97	-61.9	0.0	287.1	280.7	6.41	44.822	
1,500.0	1,460.8	1,462.8	1,462.8	6.2	3.2	171.05	-61.9	0.0	321.8	314.8	6.91	46.560	
1,600.0	1,554.4	1,550.2	1,550.2	6.9	3.4	171.87	-62.3	-0.3	357.0	349.6	7.40	48.254	
1,700.0	1,648.1	1,632.0	1,632.0	7.6	3.5	172.48	-64.3	-1.8	394.8	386.9	7.87	50.140	
1,800.0	1,741.7	1,711.9	1,711.7	8.3	3.7	172.95	-68.2	-4.7	435.1	426.8	8.34	52.170	
1,900.0	1,835.4	1,789.8	1,789.3	9.0	3.8	173.31	-73.6	-8.9	478.0	469.2	8.81	54.269	
2,000.0	1,929.0	1,865.8	1,864.8	9.7	4.0	173.58	-80.5	-14.1	523.3	514.1	9.28	56.416	

CC - Min centre to center distance or convergent point, SF - min separation factor, ES - min ellipse separation

<b>Company:</b>	Mineral Resources Inc	<b>Local Co-ordinate Reference:</b>	Well BESTWAY 12-2
<b>Project:</b>	SEC.2-T5N-R66W	<b>TVD Reference:</b>	RKB @ 4714.0ft (RKB RIG 14)
<b>Reference Site:</b>	BESTWAY HOR PAD 2-5N-66W	<b>MD Reference:</b>	RKB @ 4714.0ft (RKB RIG 14)
<b>Site Error:</b>	0.0ft	<b>North Reference:</b>	True
<b>Reference Well:</b>	BESTWAY 12-2	<b>Survey Calculation Method:</b>	Minimum Curvature
<b>Well Error:</b>	0.0ft	<b>Output errors are at</b>	2.00 sigma
<b>Reference Wellbore</b>	Wellbore #1	<b>Database:</b>	Landmark
<b>Reference Design:</b>	PLAN 1 (FEB 9 2012)	<b>Offset TVD Reference:</b>	Offset Datum

Offset Design		BESTWAY HOR PAD 2-5N-66W - BESTWAY 6-11 - Wellbore #1 - PLAN 1 (FEB 9 2012)											Offset Site Error: 0.0 ft	
Survey Program: 0-MWD													Offset Well Error: 0.0 ft	
Reference		Offset		Semi Major Axis			Distance							Warning
Measured Depth (ft)	Vertical Depth (ft)	Measured Depth (ft)	Vertical Depth (ft)	Reference (ft)	Offset (ft)	Highside Toolface (°)	Offset Wellbore Centre +N/-S (ft)	+E/-W (ft)	Between Centres (ft)	Between Ellipses (ft)	Minimum Separation (ft)	Separation Factor		
2,100.0	2,022.6	1,947.4	1,945.6	10.4	4.1	173.81	-89.4	-20.9	570.6	560.9	9.75	58.510		
2,200.0	2,116.3	2,035.4	2,032.7	11.1	4.3	174.02	-99.1	-28.3	618.2	608.0	10.24	60.392		
2,300.0	2,209.9	2,123.3	2,119.8	11.8	4.6	174.20	-108.9	-35.7	665.8	655.0	10.72	62.108		
2,400.0	2,303.6	2,211.3	2,206.9	12.6	4.8	174.35	-118.6	-43.1	713.3	702.1	11.21	63.654		
2,500.0	2,397.2	2,299.2	2,294.0	13.3	5.0	174.49	-128.4	-50.6	760.9	749.2	11.70	65.045		
2,600.0	2,490.9	2,387.1	2,381.1	14.0	5.3	174.61	-138.1	-58.0	808.5	796.3	12.19	66.301		
2,700.0	2,584.5	2,475.1	2,468.2	14.7	5.5	174.71	-147.9	-65.4	856.0	843.3	12.69	67.453		
2,800.0	2,678.1	2,563.0	2,555.3	15.4	5.8	174.81	-157.6	-72.8	903.6	890.4	13.19	68.501		
2,900.0	2,771.8	2,651.0	2,642.4	16.1	6.1	174.89	-167.4	-80.2	951.2	937.5	13.69	69.461		
3,000.0	2,865.4	2,738.9	2,729.5	16.8	6.3	174.97	-177.1	-87.7	998.8	984.6	14.20	70.342		
3,100.0	2,959.1	2,826.9	2,816.5	17.5	6.6	175.04	-186.9	-95.1	1,046.4	1,031.6	14.71	71.153		
3,200.0	3,052.7	2,914.8	2,903.6	18.3	6.9	175.10	-196.6	-102.5	1,093.9	1,078.7	15.21	71.901		
3,300.0	3,146.4	3,002.8	2,990.7	19.0	7.1	175.16	-206.4	-109.9	1,141.5	1,125.8	15.73	72.592		
3,400.0	3,240.0	3,090.7	3,077.8	19.7	7.4	175.22	-216.1	-117.3	1,189.1	1,172.9	16.24	73.232		
3,500.0	3,333.7	3,178.7	3,164.9	20.4	7.7	175.27	-225.9	-124.8	1,236.7	1,219.9	16.75	73.826		
3,600.0	3,427.3	3,266.6	3,252.0	21.1	8.0	175.31	-235.6	-132.2	1,284.3	1,267.0	17.27	74.379		
3,700.0	3,520.9	3,354.6	3,339.1	21.8	8.3	175.35	-245.4	-139.6	1,331.9	1,314.1	17.78	74.895		
3,800.0	3,614.6	3,442.5	3,426.2	22.6	8.6	175.39	-255.2	-147.0	1,379.4	1,361.1	18.30	75.377		
3,900.0	3,708.2	3,530.5	3,513.3	23.3	8.8	175.43	-264.9	-154.4	1,427.0	1,408.2	18.82	75.828		
4,000.0	3,801.9	3,618.4	3,600.4	24.0	9.1	175.47	-274.7	-161.8	1,474.6	1,455.3	19.34	76.251		
4,100.0	3,895.5	3,706.4	3,687.5	24.7	9.4	175.50	-284.4	-169.3	1,522.2	1,502.3	19.86	76.648		
4,200.0	3,989.2	3,794.3	3,774.5	25.4	9.7	175.53	-294.2	-176.7	1,569.8	1,549.4	20.38	77.021		
4,300.0	4,082.8	3,882.3	3,861.6	26.1	10.0	175.56	-303.9	-184.1	1,617.4	1,596.5	20.90	77.371		
4,400.0	4,176.4	3,970.2	3,948.7	26.8	10.3	175.59	-313.7	-191.5	1,665.0	1,643.5	21.43	77.702		
4,500.0	4,270.1	4,058.2	4,035.8	27.6	10.6	175.61	-323.4	-198.9	1,712.6	1,690.6	21.95	78.015		
4,600.0	4,363.7	4,146.1	4,122.9	28.3	10.9	175.64	-333.2	-206.4	1,760.1	1,737.7	22.48	78.310		
4,700.0	4,457.4	4,234.1	4,210.0	29.0	11.2	175.66	-342.9	-213.8	1,807.7	1,784.7	23.00	78.589		
4,740.1	4,494.9	4,269.3	4,244.9	29.3	11.3	175.67	-346.8	-216.8	1,826.8	1,803.6	23.21	78.697		
4,800.0	4,551.2	4,322.3	4,297.4	29.7	11.5	175.73	-352.7	-221.2	1,854.8	1,831.2	23.58	78.643		
4,900.0	4,646.1	4,412.0	4,386.2	30.2	11.8	175.81	-362.7	-228.8	1,899.0	1,874.8	24.16	78.598		
5,000.0	4,742.1	4,503.2	4,476.5	30.6	12.1	175.88	-372.8	-236.5	1,940.0	1,915.3	24.71	78.525		
5,100.0	4,839.0	4,595.7	4,568.2	31.0	12.4	175.93	-383.0	-244.3	1,977.8	1,952.6	25.22	78.430		
5,200.0	4,936.7	4,682.1	4,799.1	31.4	13.0	175.97	-403.3	-259.7	2,010.3	1,984.4	25.96	77.445		
5,300.0	5,035.0	5,066.2	5,037.0	31.7	13.5	176.06	-408.9	-264.0	2,030.4	2,003.7	26.63	76.233		
5,400.0	5,134.0	5,165.2	5,136.0	32.0	13.6	176.11	-408.9	-264.0	2,044.8	2,017.8	27.01	75.713		
5,500.0	5,233.4	5,264.6	5,235.4	32.2	13.8	176.15	-408.9	-264.0	2,055.9	2,028.5	27.34	75.200		
5,600.0	5,333.1	5,364.3	5,335.1	32.4	13.9	176.17	-408.9	-264.0	2,063.4	2,035.8	27.63	74.687		
5,700.0	5,433.0	5,464.2	5,435.0	32.5	14.1	176.18	-408.9	-264.0	2,067.5	2,039.6	27.87	74.175		
5,767.0	5,500.0	5,531.2	5,502.0	32.6	14.2	-134.55	-408.9	-264.0	2,068.3	2,021.6	46.69	44.296		
5,800.0	5,533.0	5,564.2	5,535.0	32.6	14.3	-134.55	-408.9	-264.0	2,068.3	2,021.5	46.77	44.221		
5,900.0	5,633.0	5,664.2	5,635.0	32.7	14.4	-134.55	-408.9	-264.0	2,068.3	2,021.3	47.02	43.989		
6,000.0	5,733.0	5,764.2	5,735.0	32.8	14.6	-134.55	-408.9	-264.0	2,068.3	2,021.0	47.27	43.757		
6,100.0	5,833.0	5,864.2	5,835.0	32.8	14.8	-134.55	-408.9	-264.0	2,068.3	2,020.7	47.52	43.525		
6,200.0	5,933.0	5,964.2	5,935.0	32.9	14.9	-134.55	-408.9	-264.0	2,068.3	2,020.5	47.77	43.293		
6,300.0	6,033.0	6,064.2	6,035.0	33.0	15.1	-134.55	-408.9	-264.0	2,068.3	2,020.2	48.03	43.060		
6,400.0	6,133.0	6,164.2	6,135.0	33.1	15.3	-134.55	-408.9	-264.0	2,068.3	2,020.0	48.29	42.828		
6,500.0	6,233.0	6,264.2	6,235.0	33.2	15.5	-134.55	-408.9	-264.0	2,068.3	2,019.7	48.56	42.596		
6,526.4	6,259.3	6,290.5	6,261.3	33.2	15.5	-134.55	-408.9	-264.0	2,068.3	2,019.6	48.63	42.535		
6,596.2	6,329.1	6,308.3	6,279.1	33.3	15.5	-134.55	-408.9	-264.0	2,068.9	2,020.2	48.72	42.467		
6,600.0	6,333.0	6,308.3	6,279.1	33.3	15.5	-43.89	-408.9	-264.0	2,069.0	2,038.1	30.87	67.029		
6,650.0	6,382.9	6,350.0	6,320.7	33.3	15.6	-44.01	-410.6	-264.0	2,068.4	2,037.7	30.71	67.358		
6,700.0	6,432.3	6,350.0	6,320.7	33.3	15.6	-44.26	-410.6	-264.0	2,065.2	2,034.8	30.36	68.029		

CC - Min centre to center distance or convergent point, SF - min separation factor, ES - min ellipse separation

<b>Company:</b>	Mineral Resources Inc	<b>Local Co-ordinate Reference:</b>	Well BESTWAY 12-2
<b>Project:</b>	SEC.2-T5N-R66W	<b>TVD Reference:</b>	RKB @ 4714.0ft (RKB RIG 14)
<b>Reference Site:</b>	BESTWAY HOR PAD 2-5N-66W	<b>MD Reference:</b>	RKB @ 4714.0ft (RKB RIG 14)
<b>Site Error:</b>	0.0ft	<b>North Reference:</b>	True
<b>Reference Well:</b>	BESTWAY 12-2	<b>Survey Calculation Method:</b>	Minimum Curvature
<b>Well Error:</b>	0.0ft	<b>Output errors are at</b>	2.00 sigma
<b>Reference Wellbore</b>	Wellbore #1	<b>Database:</b>	Landmark
<b>Reference Design:</b>	PLAN 1 (FEB 9 2012)	<b>Offset TVD Reference:</b>	Offset Datum

Offset Design BESTWAY HOR PAD 2-5N-66W - BESTWAY 6-11 - Wellbore #1 - PLAN 1 (FEB 9 2012)												Offset Site Error:	0.0ft
Survey Program: 0-MWD												Offset Well Error:	0.0ft
Reference		Offset		Semi Major Axis			Distance						Warning
Measured Depth (ft)	Vertical Depth (ft)	Measured Depth (ft)	Vertical Depth (ft)	Reference (ft)	Offset (ft)	Highside Toolface (°)	Offset Wellbore Centre +N/-S (ft)	+E/-W (ft)	Between Centres (ft)	Between Ellipses (ft)	Minimum Separation (ft)	Separation Factor	
6,750.0	6,480.7	6,350.0	6,320.7	33.2	15.6	-44.69	-410.6	-264.0	2,059.6	2,029.7	29.93	68.812	
6,800.0	6,527.8	6,373.7	6,344.3	33.1	15.7	-45.52	-413.0	-264.0	2,051.4	2,021.9	29.56	69.402	
6,850.0	6,573.0	6,400.0	6,370.3	32.9	15.8	-46.69	-417.0	-264.1	2,041.1	2,011.9	29.26	69.751	
6,900.0	6,616.0	6,400.0	6,370.3	32.8	15.8	-47.78	-417.0	-264.1	2,028.2	1,999.2	28.97	70.002	
6,950.0	6,656.4	6,400.0	6,370.3	32.6	15.8	-49.06	-417.0	-264.1	2,013.2	1,984.4	28.86	69.766	
7,000.0	6,693.7	6,400.0	6,370.3	32.4	15.8	-50.56	-417.0	-264.1	1,996.4	1,967.4	28.98	68.889	
7,050.0	6,727.7	6,424.6	6,394.4	32.2	15.9	-52.84	-421.8	-264.2	1,977.3	1,947.6	29.64	66.705	
7,100.0	6,758.0	6,450.0	6,419.0	32.0	15.9	-55.49	-428.1	-264.2	1,956.9	1,926.3	30.69	63.761	
7,150.0	6,784.3	6,450.0	6,419.0	31.9	15.9	-57.79	-428.1	-264.2	1,934.6	1,902.8	31.75	60.934	
7,200.0	6,806.5	6,450.0	6,419.0	31.7	15.9	-60.32	-428.1	-264.2	1,911.0	1,877.9	33.04	57.847	
7,250.0	6,824.3	6,450.0	6,419.0	31.5	15.9	-63.07	-428.1	-264.2	1,886.3	1,851.8	34.48	54.709	
7,300.0	6,837.5	6,450.0	6,419.0	31.4	15.9	-66.02	-428.1	-264.2	1,860.7	1,824.7	36.00	51.693	
7,350.0	6,846.0	6,450.0	6,419.0	31.3	15.9	-69.16	-428.1	-264.2	1,834.5	1,797.0	37.50	48.924	
7,400.0	6,849.8	6,450.0	6,419.0	31.2	15.9	-72.45	-428.1	-264.2	1,807.7	1,768.8	38.89	46.477	
7,414.3	6,850.0	6,450.0	6,419.0	31.2	15.9	-73.41	-428.1	-264.2	1,800.0	1,760.7	39.27	45.839	
7,500.0	6,850.0	6,450.0	6,419.0	31.1	15.9	-73.41	-428.1	-264.2	1,755.3	1,715.7	39.67	44.250	
7,600.0	6,850.0	6,450.0	6,419.0	31.2	15.9	-73.41	-428.1	-264.2	1,707.1	1,666.7	40.39	42.268	
7,700.0	6,850.0	6,450.0	6,419.0	31.5	15.9	-73.41	-428.1	-264.2	1,663.6	1,622.2	41.36	40.223	
7,800.0	6,850.0	6,450.0	6,419.0	32.1	15.9	-73.41	-428.1	-264.2	1,625.0	1,582.4	42.55	38.188	
7,900.0	6,850.0	6,450.0	6,419.0	33.0	15.9	-73.41	-428.1	-264.2	1,591.8	1,547.8	43.94	36.223	
8,000.0	6,850.0	6,450.0	6,419.0	34.2	15.9	-73.41	-428.1	-264.2	1,564.2	1,518.7	45.51	34.374	
8,100.0	6,850.0	6,450.0	6,419.0	35.6	15.9	-73.41	-428.1	-264.2	1,542.7	1,495.5	47.22	32.674	
8,200.0	6,850.0	6,450.0	6,419.0	37.3	15.9	-73.41	-428.1	-264.2	1,527.4	1,478.4	49.05	31.141	
8,300.0	6,850.0	6,450.0	6,419.0	39.2	15.9	-73.41	-428.1	-264.2	1,518.6	1,467.6	50.99	29.783	
8,384.3	6,850.0	6,450.0	6,419.0	40.9	15.9	-73.41	-428.1	-264.2	1,516.3	1,463.6	52.70	28.771	
8,400.0	6,850.0	6,450.0	6,419.0	41.2	15.9	-73.41	-428.1	-264.2	1,516.4	1,463.3	53.02	28.600	
8,500.0	6,850.0	6,450.0	6,419.0	43.3	15.9	-73.41	-428.1	-264.2	1,520.7	1,465.6	55.13	27.585	
8,600.0	6,850.0	6,450.0	6,419.0	45.6	15.9	-73.41	-428.1	-264.2	1,531.5	1,474.2	57.30	26.728	
8,700.0	6,850.0	6,450.0	6,419.0	47.9	15.9	-73.41	-428.1	-264.2	1,548.8	1,489.3	59.53	26.017	
8,800.0	6,850.0	6,450.0	6,419.0	50.2	15.9	-73.41	-428.1	-264.2	1,572.2	1,510.4	61.81	25.438	
8,900.0	6,850.0	6,450.0	6,419.0	52.6	15.9	-73.41	-428.1	-264.2	1,601.6	1,537.4	64.13	24.975	
9,000.0	6,850.0	6,450.0	6,419.0	55.1	15.9	-73.41	-428.1	-264.2	1,636.5	1,570.0	66.48	24.616	
9,100.0	6,850.0	6,450.0	6,419.0	57.5	15.9	-73.41	-428.1	-264.2	1,676.7	1,607.8	68.87	24.347	
9,200.0	6,850.0	6,450.0	6,419.0	60.1	15.9	-73.41	-428.1	-264.2	1,721.7	1,650.5	71.28	24.154	
9,300.0	6,850.0	6,450.0	6,419.0	62.6	15.9	-73.41	-428.1	-264.2	1,771.3	1,697.6	73.72	24.028	
9,400.0	6,850.0	6,450.0	6,419.0	65.2	15.9	-73.41	-428.1	-264.2	1,825.0	1,748.8	76.18	23.957	
9,500.0	6,850.0	6,450.0	6,419.0	67.7	15.9	-73.41	-428.1	-264.2	1,882.5	1,803.8	78.66	23.933 SF	
9,600.0	6,850.0	6,450.0	6,419.0	70.3	15.9	-73.41	-428.1	-264.2	1,943.4	1,862.3	81.15	23.948	
9,700.0	6,850.0	6,450.0	6,419.0	72.9	15.9	-73.41	-428.1	-264.2	2,007.5	1,923.8	83.66	23.996	
9,800.0	6,850.0	6,450.0	6,419.0	75.6	15.9	-73.41	-428.1	-264.2	2,074.4	1,988.2	86.18	24.070	
9,900.0	6,850.0	6,450.0	6,419.0	78.2	15.9	-73.41	-428.1	-264.2	2,143.9	2,055.2	88.72	24.165	
10,000.0	6,850.0	6,450.0	6,419.0	80.8	15.9	-73.41	-428.1	-264.2	2,215.7	2,124.5	91.26	24.278	
10,100.0	6,850.0	6,450.0	6,419.0	83.5	15.9	-73.41	-428.1	-264.2	2,289.7	2,195.9	93.82	24.405	
10,200.0	6,850.0	6,450.0	6,419.0	86.2	15.9	-73.41	-428.1	-264.2	2,365.5	2,269.1	96.39	24.542	
10,300.0	6,850.0	6,450.0	6,419.0	88.8	15.9	-73.41	-428.1	-264.2	2,443.1	2,344.2	98.96	24.689	
10,400.0	6,850.0	6,450.0	6,419.0	91.5	15.9	-73.41	-428.1	-264.2	2,522.3	2,420.8	101.54	24.841	
10,500.0	6,850.0	6,450.0	6,419.0	94.2	15.9	-73.41	-428.1	-264.2	2,602.9	2,498.8	104.12	24.998	
10,600.0	6,850.0	6,450.0	6,419.0	96.9	15.9	-73.41	-428.1	-264.2	2,684.8	2,578.1	106.72	25.158	
10,700.0	6,850.0	6,450.0	6,419.0	99.6	15.9	-73.41	-428.1	-264.2	2,767.9	2,658.6	109.32	25.320	
10,800.0	6,850.0	6,450.0	6,419.0	102.3	15.9	-73.41	-428.1	-264.2	2,852.1	2,740.2	111.92	25.484	
10,900.0	6,850.0	6,450.0	6,419.0	105.0	15.9	-73.41	-428.1	-264.2	2,937.3	2,822.8	114.53	25.647	
11,000.0	6,850.0	6,450.0	6,419.0	107.8	15.9	-73.41	-428.1	-264.2	3,023.4	2,906.2	117.14	25.810	

CC - Min centre to center distance or convergent point, SF - min separation factor, ES - min ellipse separation

<b>Company:</b>	Mineral Resources Inc	<b>Local Co-ordinate Reference:</b>	Well BESTWAY 12-2
<b>Project:</b>	SEC.2-T5N-R66W	<b>TVD Reference:</b>	RKB @ 4714.0ft (RKB RIG 14)
<b>Reference Site:</b>	BESTWAY HOR PAD 2-5N-66W	<b>MD Reference:</b>	RKB @ 4714.0ft (RKB RIG 14)
<b>Site Error:</b>	0.0ft	<b>North Reference:</b>	True
<b>Reference Well:</b>	BESTWAY 12-2	<b>Survey Calculation Method:</b>	Minimum Curvature
<b>Well Error:</b>	0.0ft	<b>Output errors are at</b>	2.00 sigma
<b>Reference Wellbore</b>	Wellbore #1	<b>Database:</b>	Landmark
<b>Reference Design:</b>	PLAN 1 (FEB 9 2012)	<b>Offset TVD Reference:</b>	Offset Datum

Offset Design BESTWAY HOR PAD 2-5N-66W - BESTWAY 6-11 - Wellbore #1 - PLAN 1 (FEB 9 2012)													Offset Site Error:	0.0 ft
Survey Program: 0-MWD													Offset Well Error:	0.0 ft
Reference		Offset		Semi Major Axis			Distance							Warning
Measured Depth	Vertical Depth	Measured Depth	Vertical Depth	Reference	Offset	Highside Toolface	Offset Wellbore Centre		Between Centres	Between Ellipses	Minimum Separation	Separation Factor		
(ft)	(ft)	(ft)	(ft)	(ft)	(ft)	(°)	+N/-S (ft)	+E/-W (ft)	(ft)	(ft)	(ft)			
11,100.0	6,850.0	6,450.0	6,419.0	110.5	15.9	-73.41	-428.1	-264.2	3,110.3	2,990.5	119.76	25.972		
11,200.0	6,850.0	6,450.0	6,419.0	113.2	15.9	-73.41	-428.1	-264.2	3,198.0	3,075.6	122.38	26.132		
11,300.0	6,850.0	6,450.0	6,419.0	115.9	15.9	-73.41	-428.1	-264.2	3,286.4	3,161.4	125.00	26.290		
11,400.0	6,850.0	6,450.0	6,419.0	118.7	15.9	-73.41	-428.1	-264.2	3,375.4	3,247.8	127.63	26.447		
11,500.0	6,850.0	6,450.0	6,419.0	121.4	15.9	-73.41	-428.1	-264.2	3,465.0	3,334.8	130.26	26.601		
11,600.0	6,850.0	6,450.0	6,419.0	124.1	15.9	-73.41	-428.1	-264.2	3,555.2	3,422.3	132.89	26.752		
11,700.0	6,850.0	6,450.0	6,419.0	126.9	15.9	-73.41	-428.1	-264.2	3,645.9	3,510.4	135.53	26.901		
11,800.0	6,850.0	6,450.0	6,419.0	129.6	15.9	-73.41	-428.1	-264.2	3,737.1	3,598.9	138.17	27.047		
11,900.0	6,850.0	6,450.0	6,419.0	132.4	15.9	-73.41	-428.1	-264.2	3,828.7	3,687.9	140.81	27.191		
11,990.0	6,850.0	6,450.0	6,419.0	134.8	15.9	-73.41	-428.1	-264.2	3,911.5	3,768.4	143.19	27.317		



<b>Company:</b>	Mineral Resources Inc	<b>Local Co-ordinate Reference:</b>	Well BESTWAY 12-2
<b>Project:</b>	SEC.2-T5N-R66W	<b>TVD Reference:</b>	RKB @ 4714.0ft (RKB RIG 14)
<b>Reference Site:</b>	BESTWAY HOR PAD 2-5N-66W	<b>MD Reference:</b>	RKB @ 4714.0ft (RKB RIG 14)
<b>Site Error:</b>	0.0ft	<b>North Reference:</b>	True
<b>Reference Well:</b>	BESTWAY 12-2	<b>Survey Calculation Method:</b>	Minimum Curvature
<b>Well Error:</b>	0.0ft	<b>Output errors are at</b>	2.00 sigma
<b>Reference Wellbore</b>	Wellbore #1	<b>Database:</b>	Landmark
<b>Reference Design:</b>	PLAN 1 (FEB 9 2012)	<b>Offset TVD Reference:</b>	Offset Datum

Offset Design BESTWAY HOR PAD 2-5N-66W - POUDRE TRAIL 5 2-2-1 - Wellbore #1 - PLAN 1 ( FEB 9 2012)													Offset Site Error:	0.0ft
Survey Program: 0-MWD													Offset Well Error:	0.0ft
Reference	Offset	Semi Major Axis		Distance		Warning								
Measured Depth (ft)	Vertical Depth (ft)	Measured Depth (ft)	Vertical Depth (ft)	Reference (ft)	Offset (ft)	Highside Toolface (°)	Offset Wellbore Centre +N/-S (ft)	+E/-W (ft)	Between Centres (ft)	Between Ellipses (ft)	Minimum Separation (ft)	Separation Factor		
0.0	0.0	1.0	1.0	0.0	0.0	180.00	-43.7	0.0	43.7	43.7	0.00	N/A		
100.0	100.0	101.0	101.0	0.1	0.1	180.00	-43.7	0.0	43.7	43.5	0.23	192.577		
200.0	200.0	201.0	201.0	0.3	0.3	180.00	-43.7	0.0	43.7	43.0	0.68	64.622		
201.6	201.6	202.6	202.6	0.3	0.3	130.73	-43.7	0.0	43.7	43.0	0.68	63.950 CC		
300.0	300.0	301.6	301.6	0.6	0.6	130.31	-43.0	1.7	44.1	43.0	1.12	39.374 ES		
400.0	399.8	402.2	402.0	0.8	0.8	129.17	-40.9	6.5	45.5	43.9	1.58	28.799		
500.0	499.5	502.8	502.2	1.0	1.0	127.43	-37.3	14.7	47.7	45.6	2.07	22.984		
600.0	598.7	603.3	601.9	1.3	1.3	125.28	-32.4	26.0	50.9	48.3	2.63	19.339		
700.0	697.5	703.7	701.1	1.7	1.7	122.88	-26.1	40.5	55.1	51.8	3.27	16.849		
800.0	795.6	804.0	799.6	2.0	2.1	120.42	-18.4	58.2	60.3	56.3	4.01	15.049		
900.0	893.1	904.3	897.2	2.5	2.5	118.01	-9.3	79.0	66.5	61.7	4.86	13.698		
1,000.0	989.6	1,004.4	993.9	3.0	3.0	115.74	1.1	102.9	73.9	68.0	5.83	12.658		
1,100.0	1,085.3	1,104.4	1,089.5	3.5	3.6	113.65	12.8	129.8	82.2	75.3	6.94	11.845		
1,200.0	1,179.8	1,204.3	1,183.8	4.1	4.2	111.76	25.8	159.8	91.6	83.4	8.18	11.198		
1,227.0	1,205.1	1,231.2	1,209.1	4.3	4.4	111.28	29.6	168.3	94.3	85.8	8.55	11.039		
1,300.0	1,273.5	1,304.0	1,276.9	4.8	4.9	109.71	40.1	192.6	101.7	92.2	9.56	10.647		
1,400.0	1,367.1	1,403.4	1,368.3	5.5	5.7	106.37	55.7	228.4	111.9	100.9	11.04	10.139		
1,500.0	1,460.8	1,502.3	1,457.9	6.2	6.5	102.00	72.4	266.7	122.6	110.0	12.60	9.734		
1,600.0	1,554.4	1,600.4	1,545.3	6.9	7.4	96.94	90.2	307.6	134.4	120.2	14.18	9.479		
1,700.0	1,648.1	1,697.8	1,630.5	7.6	8.4	91.51	109.0	350.8	147.9	132.2	15.73	9.402 SF		
1,800.0	1,741.7	1,795.7	1,715.6	8.3	9.4	86.59	128.3	395.2	162.9	145.7	17.21	9.467		
1,900.0	1,835.4	1,893.7	1,800.8	9.0	10.4	82.51	147.7	439.6	178.9	160.3	18.61	9.613		
2,000.0	1,929.0	1,991.7	1,886.0	9.7	11.4	79.10	167.0	484.0	195.7	175.7	19.96	9.804		
2,100.0	2,022.6	2,089.6	1,971.1	10.4	12.5	76.23	186.3	528.4	213.0	191.7	21.26	10.017		
2,200.0	2,116.3	2,187.6	2,056.3	11.1	13.5	73.80	205.7	572.8	230.7	208.2	22.53	10.239		
2,300.0	2,209.9	2,285.6	2,141.5	11.8	14.5	71.71	225.0	617.2	248.8	225.0	23.79	10.461		
2,400.0	2,303.6	2,383.5	2,226.6	12.6	15.5	69.91	244.3	661.6	267.2	242.2	25.02	10.678		
2,500.0	2,397.2	2,481.5	2,311.8	13.3	16.6	68.34	263.6	706.0	285.8	259.6	26.25	10.889		
2,600.0	2,490.9	2,579.5	2,397.0	14.0	17.6	66.96	283.0	750.4	304.6	277.1	27.46	11.091		
2,700.0	2,584.5	2,677.5	2,482.1	14.7	18.6	65.74	302.3	794.8	323.5	294.9	28.67	11.284		
2,800.0	2,678.1	2,775.4	2,567.3	15.4	19.7	64.66	321.6	839.2	342.6	312.7	29.88	11.468		
2,900.0	2,771.8	2,873.4	2,652.5	16.1	20.7	63.69	340.9	883.6	361.8	330.7	31.07	11.642		
3,000.0	2,865.4	2,971.4	2,737.6	16.8	21.8	62.81	360.3	928.0	381.0	348.8	32.27	11.807		
3,100.0	2,959.1	3,069.3	2,822.8	17.5	22.8	62.03	379.6	972.4	400.4	366.9	33.47	11.964		
3,200.0	3,052.7	3,167.3	2,908.0	18.3	23.8	61.31	398.9	1,016.8	419.8	385.1	34.66	12.112		
3,300.0	3,146.4	3,265.3	2,993.1	19.0	24.9	60.66	418.3	1,061.2	439.2	403.4	35.85	12.252		
3,400.0	3,240.0	3,363.2	3,078.3	19.7	25.9	60.06	437.6	1,105.6	458.8	421.7	37.04	12.385		
3,500.0	3,333.7	3,461.2	3,163.5	20.4	26.9	59.51	456.9	1,150.0	478.3	440.1	38.23	12.511		
3,600.0	3,427.3	3,559.2	3,248.6	21.1	28.0	59.00	476.2	1,194.4	497.9	458.5	39.42	12.631		
3,700.0	3,520.9	3,657.2	3,333.8	21.8	29.0	58.54	495.6	1,238.8	517.5	476.9	40.61	12.745		
3,800.0	3,614.6	3,755.1	3,419.0	22.6	30.1	58.10	514.9	1,283.2	537.2	495.4	41.80	12.853		
3,900.0	3,708.2	3,853.1	3,504.1	23.3	31.1	57.70	534.2	1,327.6	556.9	513.9	42.98	12.956		
4,000.0	3,801.9	3,951.1	3,589.3	24.0	32.1	57.33	553.6	1,372.0	576.6	532.4	44.17	13.054		
4,100.0	3,895.5	4,049.0	3,674.4	24.7	33.2	56.98	572.9	1,416.4	596.4	551.0	45.36	13.147		
4,200.0	3,989.2	4,147.0	3,759.6	25.4	34.2	56.65	592.2	1,460.8	616.1	569.6	46.55	13.236		
4,300.0	4,082.8	4,245.0	3,844.8	26.1	35.3	56.34	611.5	1,505.2	635.9	588.1	47.73	13.321		
4,400.0	4,176.4	4,342.9	3,929.9	26.8	36.3	56.05	630.9	1,549.6	655.7	606.8	48.92	13.403		
4,500.0	4,270.1	4,440.9	4,015.1	27.6	37.4	55.78	650.2	1,594.0	675.5	625.4	50.11	13.480		
4,600.0	4,363.7	4,538.9	4,100.3	28.3	38.4	55.52	669.5	1,638.4	695.3	644.0	51.30	13.555		
4,700.0	4,457.4	4,636.9	4,185.4	29.0	39.4	55.28	688.9	1,682.8	715.1	662.7	52.48	13.626		
4,740.1	4,494.9	4,676.1	4,219.6	29.3	39.9	55.19	696.6	1,700.6	723.1	670.1	52.96	13.654		
4,800.0	4,551.2	4,734.7	4,270.5	29.7	40.5	55.21	708.2	1,727.2	735.3	681.7	53.68	13.699		

CC - Min centre to center distance or convergent point, SF - min separation factor, ES - min ellipse separation

<b>Company:</b>	Mineral Resources Inc	<b>Local Co-ordinate Reference:</b>	Well BESTWAY 12-2
<b>Project:</b>	SEC.2-T5N-R66W	<b>TVD Reference:</b>	RKB @ 4714.0ft (RKB RIG 14)
<b>Reference Site:</b>	BESTWAY HOR PAD 2-5N-66W	<b>MD Reference:</b>	RKB @ 4714.0ft (RKB RIG 14)
<b>Site Error:</b>	0.0ft	<b>North Reference:</b>	True
<b>Reference Well:</b>	BESTWAY 12-2	<b>Survey Calculation Method:</b>	Minimum Curvature
<b>Well Error:</b>	0.0ft	<b>Output errors are at</b>	2.00 sigma
<b>Reference Wellbore</b>	Wellbore #1	<b>Database:</b>	Landmark
<b>Reference Design:</b>	PLAN 1 (FEB 9 2012)	<b>Offset TVD Reference:</b>	Offset Datum

Offset Design												Offset Site Error:	0.0ft
Survey Program: 0-MWD												Offset Well Error:	0.0ft
Reference		Offset		Semi Major Axis			Distance						
Measured Depth (ft)	Vertical Depth (ft)	Measured Depth (ft)	Vertical Depth (ft)	Reference (ft)	Offset (ft)	Highside Toolface (°)	Offset Wellbore Centre +N/-S (ft)	+E/-W (ft)	Between Centres (ft)	Between Ellipses (ft)	Minimum Separation (ft)	Separation Factor	Warning
4,900.0	4,646.1	4,832.1	4,355.2	30.2	41.5	55.13	727.4	1,771.3	757.3	702.7	54.69	13.847	
5,000.0	4,742.1	4,928.8	4,439.2	30.6	42.5	54.89	746.5	1,815.2	781.4	725.8	55.56	14.064	
5,100.0	4,839.0	5,024.7	4,522.6	31.0	43.6	54.52	765.4	1,858.6	807.5	751.2	56.28	14.348	
5,200.0	4,936.7	5,119.7	4,605.2	31.4	44.6	54.04	784.1	1,901.7	835.7	778.8	56.86	14.699	
5,300.0	5,035.0	5,213.7	4,686.9	31.7	45.6	53.48	802.7	1,944.3	866.1	808.8	57.30	15.115	
5,400.0	5,134.0	5,306.6	4,767.6	32.0	46.6	52.85	821.0	1,986.4	898.8	841.2	57.63	15.596	
5,500.0	5,233.4	5,398.2	4,847.3	32.2	47.5	52.18	839.1	2,027.9	933.9	876.1	57.85	16.144	
5,600.0	5,333.1	5,492.8	4,929.5	32.4	48.5	51.41	857.7	2,070.7	971.4	913.5	57.94	16.766	
5,700.0	5,433.0	5,608.1	5,030.9	32.5	49.5	50.36	879.6	2,121.1	1,009.9	952.1	57.75	17.487	
5,767.0	5,500.0	5,686.3	5,100.5	32.6	50.1	98.92	893.8	2,153.6	1,035.7	968.0	67.70	15.299	
5,800.0	5,533.0	5,725.1	5,135.4	32.6	50.4	98.38	900.6	2,169.3	1,048.4	980.0	68.36	15.336	
5,900.0	5,633.0	5,845.2	5,244.3	32.7	51.3	96.87	920.8	2,215.7	1,085.4	1,015.1	70.26	15.448	
6,000.0	5,733.0	5,968.8	5,358.0	32.8	52.2	95.54	940.2	2,260.2	1,120.1	1,048.1	71.99	15.558	
6,100.0	5,833.0	6,095.7	5,476.2	32.8	53.0	94.37	958.5	2,302.3	1,152.4	1,078.9	73.58	15.663	
6,200.0	5,933.0	6,225.8	5,599.0	32.9	53.7	93.35	975.7	2,341.8	1,182.1	1,107.1	75.00	15.761	
6,300.0	6,033.0	6,358.9	5,726.1	33.0	54.4	92.47	991.5	2,378.1	1,209.0	1,132.8	76.28	15.849	
6,400.0	6,133.0	6,494.8	5,857.1	33.1	55.0	91.72	1,005.8	2,411.0	1,233.0	1,155.6	77.43	15.925	
6,500.0	6,233.0	6,633.1	5,991.8	33.2	55.6	91.09	1,018.5	2,440.1	1,253.9	1,175.5	78.43	15.988	
6,596.2	6,329.1	6,768.3	6,124.4	33.3	56.0	90.59	1,029.0	2,464.2	1,271.0	1,191.7	79.26	16.036	
6,600.0	6,333.0	6,773.7	6,129.8	33.3	56.1	-178.77	1,029.4	2,465.0	1,271.6	1,216.4	55.19	23.042	
6,650.0	6,382.9	6,844.0	6,199.1	33.3	56.3	-178.97	1,034.0	2,475.8	1,281.9	1,227.8	54.16	23.672	
6,700.0	6,432.3	6,913.3	6,267.6	33.3	56.4	-179.14	1,038.1	2,485.2	1,296.1	1,243.4	52.68	24.603	
6,750.0	6,480.7	6,981.1	6,334.8	33.2	56.6	-179.29	1,041.7	2,493.3	1,314.1	1,263.3	50.78	25.877	
6,800.0	6,527.8	7,047.2	6,400.5	33.1	56.7	-179.42	1,044.6	2,500.2	1,335.7	1,287.2	48.49	27.546	
6,850.0	6,573.0	7,111.0	6,464.0	32.9	56.9	-179.52	1,047.1	2,505.8	1,360.9	1,315.0	45.84	29.687	
6,900.0	6,616.0	7,172.3	6,525.1	32.8	57.0	-179.60	1,049.0	2,510.3	1,389.5	1,346.6	42.88	32.401	
6,950.0	6,656.4	7,230.5	6,583.1	32.6	57.0	-179.66	1,050.5	2,513.7	1,421.3	1,381.6	39.68	35.823	
7,000.0	6,693.7	7,285.2	6,637.8	32.4	57.1	-179.70	1,051.6	2,516.2	1,456.2	1,419.9	36.30	40.118	
7,050.0	6,727.7	7,336.0	6,688.6	32.2	57.2	-179.72	1,052.4	2,517.9	1,494.0	1,461.1	32.85	45.481	
7,100.0	6,758.0	7,382.4	6,734.9	32.0	57.2	-179.73	1,052.8	2,518.9	1,534.4	1,504.9	29.46	52.079	
7,150.0	6,784.3	7,423.8	6,776.4	31.9	57.2	-179.71	1,053.0	2,519.3	1,577.1	1,550.8	26.32	59.918	
7,200.0	6,806.5	7,455.0	6,807.5	31.7	57.2	-179.66	1,053.0	2,519.4	1,621.9	1,598.3	23.67	68.527	
7,250.0	6,824.3	7,472.7	6,825.3	31.5	57.3	-179.57	1,053.0	2,519.4	1,668.6	1,646.8	21.80	76.541	
7,300.0	6,837.5	7,486.0	6,838.5	31.4	57.3	-179.41	1,053.0	2,519.4	1,716.9	1,695.8	21.03	81.652	
7,350.0	6,846.0	7,494.5	6,847.0	31.3	57.3	-178.99	1,053.0	2,519.4	1,766.1	1,744.5	21.56	81.906	
7,400.0	6,849.8	7,498.3	6,850.8	31.2	57.3	-175.59	1,053.0	2,519.4	1,815.9	1,791.3	24.66	73.634	
7,414.3	6,850.0	7,498.5	6,851.0	31.2	57.3	-90.00	1,053.0	2,519.4	1,830.3	1,749.9	80.40	22.765	
7,500.0	6,850.0	7,498.5	6,851.0	31.1	57.3	-90.00	1,053.0	2,519.4	1,915.9	1,835.1	80.84	23.699	
7,600.0	6,850.0	7,498.5	6,851.0	31.2	57.3	-90.00	1,053.0	2,519.4	2,015.9	1,934.3	81.62	24.700	
7,700.0	6,850.0	7,498.5	6,851.0	31.5	57.3	-90.00	1,053.0	2,519.4	2,115.9	2,033.3	82.64	25.604	
7,800.0	6,850.0	7,498.5	6,851.0	32.1	57.3	-90.00	1,053.0	2,519.4	2,215.9	2,132.0	83.89	26.415	
7,900.0	6,850.0	7,498.5	6,851.0	33.0	57.3	-90.00	1,053.0	2,519.4	2,315.9	2,230.6	85.34	27.138	
8,000.0	6,850.0	7,498.5	6,851.0	34.2	57.3	-90.00	1,053.0	2,519.4	2,415.9	2,329.0	86.96	27.782	
8,100.0	6,850.0	7,498.5	6,851.0	35.6	57.3	-90.00	1,053.0	2,519.4	2,515.9	2,427.2	88.73	28.354	
8,200.0	6,850.0	7,498.5	6,851.0	37.3	57.3	-90.00	1,053.0	2,519.4	2,615.9	2,525.3	90.63	28.863	
8,300.0	6,850.0	7,498.5	6,851.0	39.2	57.3	-90.00	1,053.0	2,519.4	2,715.9	2,623.3	92.64	29.317	
8,400.0	6,850.0	7,498.5	6,851.0	41.2	57.3	-90.00	1,053.0	2,519.4	2,815.9	2,721.2	94.74	29.722	
8,500.0	6,850.0	7,498.5	6,851.0	43.3	57.3	-90.00	1,053.0	2,519.4	2,915.9	2,819.0	96.92	30.084	
8,600.0	6,850.0	7,498.5	6,851.0	45.6	57.3	-90.00	1,053.0	2,519.4	3,015.9	2,916.8	99.17	30.410	
8,700.0	6,850.0	7,498.5	6,851.0	47.9	57.3	-90.00	1,053.0	2,519.4	3,115.9	3,014.4	101.48	30.704	
8,800.0	6,850.0	7,498.5	6,851.0	50.2	57.3	-90.00	1,053.0	2,519.4	3,215.9	3,112.1	103.84	30.969	
8,900.0	6,850.0	7,498.5	6,851.0	52.6	57.3	-90.00	1,053.0	2,519.4	3,315.9	3,209.7	106.25	31.210	

CC - Min centre to center distance or convergent point, SF - min separation factor, ES - min ellipse separation

<b>Company:</b>	Mineral Resources Inc	<b>Local Co-ordinate Reference:</b>	Well BESTWAY 12-2
<b>Project:</b>	SEC.2-T5N-R66W	<b>TVD Reference:</b>	RKB @ 4714.0ft (RKB RIG 14)
<b>Reference Site:</b>	BESTWAY HOR PAD 2-5N-66W	<b>MD Reference:</b>	RKB @ 4714.0ft (RKB RIG 14)
<b>Site Error:</b>	0.0ft	<b>North Reference:</b>	True
<b>Reference Well:</b>	BESTWAY 12-2	<b>Survey Calculation Method:</b>	Minimum Curvature
<b>Well Error:</b>	0.0ft	<b>Output errors are at</b>	2.00 sigma
<b>Reference Wellbore</b>	Wellbore #1	<b>Database:</b>	Landmark
<b>Reference Design:</b>	PLAN 1 (FEB 9 2012)	<b>Offset TVD Reference:</b>	Offset Datum

<b>Offset Design</b>												<b>Offset Site Error:</b>	0.0 ft
BESTWAY HOR PAD 2-5N-66W - POUDRE TRAIL 5 2-2-1 - Wellbore #1 - PLAN 1 ( FEB 9 2012)												<b>Offset Well Error:</b>	0.0 ft
Survey Program: 0-MWD													
Reference		Offset		Semi Major Axis			Distance						
Measured Depth (ft)	Vertical Depth (ft)	Measured Depth (ft)	Vertical Depth (ft)	Reference (ft)	Offset (ft)	Highside Toolface (°)	Offset Wellbore Centre +N/-S (ft)	+E/-W (ft)	Between Centres (ft)	Between Ellipses (ft)	Minimum Separation (ft)	Separation Factor	Warning
9,000.0	6,850.0	7,498.5	6,851.0	55.1	57.3	-90.00	1,053.0	2,519.4	3,415.9	3,307.2	108.69	31.429	
9,100.0	6,850.0	7,498.5	6,851.0	57.5	57.3	-90.00	1,053.0	2,519.4	3,515.9	3,404.8	111.16	31.629	
9,200.0	6,850.0	7,498.5	6,851.0	60.1	57.3	-90.00	1,053.0	2,519.4	3,615.9	3,502.3	113.66	31.813	
9,300.0	6,850.0	7,498.5	6,851.0	62.6	57.3	-90.00	1,053.0	2,519.4	3,715.9	3,599.7	116.19	31.981	
9,400.0	6,850.0	7,498.5	6,851.0	65.2	57.3	-90.00	1,053.0	2,519.4	3,815.9	3,697.2	118.74	32.136	
9,500.0	6,850.0	7,498.5	6,851.0	67.7	57.3	-90.00	1,053.0	2,519.4	3,915.9	3,794.6	121.31	32.279	
9,600.0	6,850.0	7,498.5	6,851.0	70.3	57.3	-90.00	1,053.0	2,519.4	4,015.9	3,892.0	123.90	32.412	
9,700.0	6,850.0	7,498.5	6,851.0	72.9	57.3	-90.00	1,053.0	2,519.4	4,115.9	3,989.4	126.51	32.535	
9,800.0	6,850.0	7,498.5	6,851.0	75.6	57.3	-90.00	1,053.0	2,519.4	4,215.9	4,086.8	129.13	32.649	
9,900.0	6,850.0	7,498.5	6,851.0	78.2	57.3	-90.00	1,053.0	2,519.4	4,315.9	4,184.2	131.76	32.756	
10,000.0	6,850.0	5,394.6	4,844.2	80.8	47.5	-6.06	838.4	2,026.3	4,409.4	4,371.9	37.42	117.848	
10,100.0	6,850.0	5,349.1	4,804.6	83.5	47.0	-6.18	829.4	2,005.6	4,498.3	4,460.2	38.12	117.999	
10,200.0	6,850.0	5,303.5	4,765.0	86.2	46.5	-6.30	820.4	1,985.0	4,587.2	4,548.4	38.83	118.131	
10,300.0	6,850.0	5,258.0	4,725.4	88.8	46.0	-6.42	811.4	1,964.4	4,676.1	4,636.6	39.55	118.244	
10,400.0	6,850.0	5,212.5	4,685.8	91.5	45.6	-6.53	802.4	1,943.7	4,765.0	4,724.8	40.27	118.342	
10,500.0	6,850.0	5,166.9	4,646.2	94.2	45.1	-6.64	793.4	1,923.1	4,854.0	4,813.0	40.99	118.425	
10,600.0	6,850.0	5,121.4	4,606.6	96.9	44.6	-6.74	784.4	1,902.4	4,942.9	4,901.2	41.71	118.495	
10,700.0	6,850.0	5,075.8	4,567.0	99.6	44.1	-6.84	775.5	1,881.8	5,031.8	4,989.4	42.44	118.552	
10,800.0	6,850.0	5,030.3	4,527.5	102.3	43.6	-6.94	766.5	1,861.2	5,120.8	5,077.6	43.18	118.599	
10,900.0	6,850.0	4,984.8	4,487.9	105.0	43.1	-7.04	757.5	1,840.5	5,209.7	5,165.8	43.91	118.637	
11,000.0	6,850.0	4,939.2	4,448.3	107.8	42.7	-7.13	748.5	1,819.9	5,298.7	5,254.0	44.65	118.665	
11,100.0	6,850.0	4,893.7	4,408.7	110.5	42.2	-7.21	739.5	1,799.2	5,387.6	5,342.2	45.39	118.685	
11,200.0	6,850.0	4,848.1	4,369.1	113.2	41.7	-7.30	730.5	1,778.6	5,476.6	5,430.4	46.14	118.698	
11,300.0	6,850.0	4,802.6	4,329.5	115.9	41.2	-7.38	721.6	1,758.0	5,565.5	5,518.6	46.89	118.704	
11,400.0	6,850.0	4,757.0	4,289.9	118.7	40.7	-7.46	712.6	1,737.3	5,654.5	5,606.8	47.64	118.704	
11,500.0	6,850.0	4,711.5	4,250.3	121.4	40.2	-7.54	703.6	1,716.7	5,743.4	5,695.1	48.39	118.699	
11,600.0	6,850.0	4,666.0	4,210.7	124.1	39.7	-7.61	694.6	1,696.0	5,832.4	5,783.3	49.14	118.688	
11,700.0	6,850.0	4,620.4	4,171.2	126.9	39.3	-7.69	685.6	1,675.4	5,921.4	5,871.5	49.90	118.673	
11,800.0	6,850.0	4,574.9	4,131.6	129.6	38.8	-7.76	676.6	1,654.8	6,010.3	5,959.7	50.65	118.654	
11,900.0	6,850.0	4,529.3	4,092.0	132.4	38.3	-7.82	667.6	1,634.1	6,099.3	6,047.9	51.41	118.631	
11,990.0	6,850.0	4,488.3	4,056.3	134.8	37.9	-7.88	659.6	1,615.5	6,179.4	6,127.3	52.10	118.608	

**Company:** Mineral Resources Inc  
**Project:** SEC.2-T5N-R66W  
**Reference Site:** BESTWAY HOR PAD 2-5N-66W  
**Site Error:** 0.0ft  
**Reference Well:** BESTWAY 12-2  
**Well Error:** 0.0ft  
**Reference Wellbore:** Wellbore #1  
**Reference Design:** PLAN 1 (FEB 9 2012)

**Local Co-ordinate Reference:** Well BESTWAY 12-2  
**TVD Reference:** RKB @ 4714.0ft (RKB RIG 14)  
**MD Reference:** RKB @ 4714.0ft (RKB RIG 14)  
**North Reference:** True  
**Survey Calculation Method:** Minimum Curvature  
**Output errors are at** 2.00 sigma  
**Database:** Landmark  
**Offset TVD Reference:** Offset Datum

Reference Depths are relative to RKB @ 4714.0ft (RKB RIG 14)

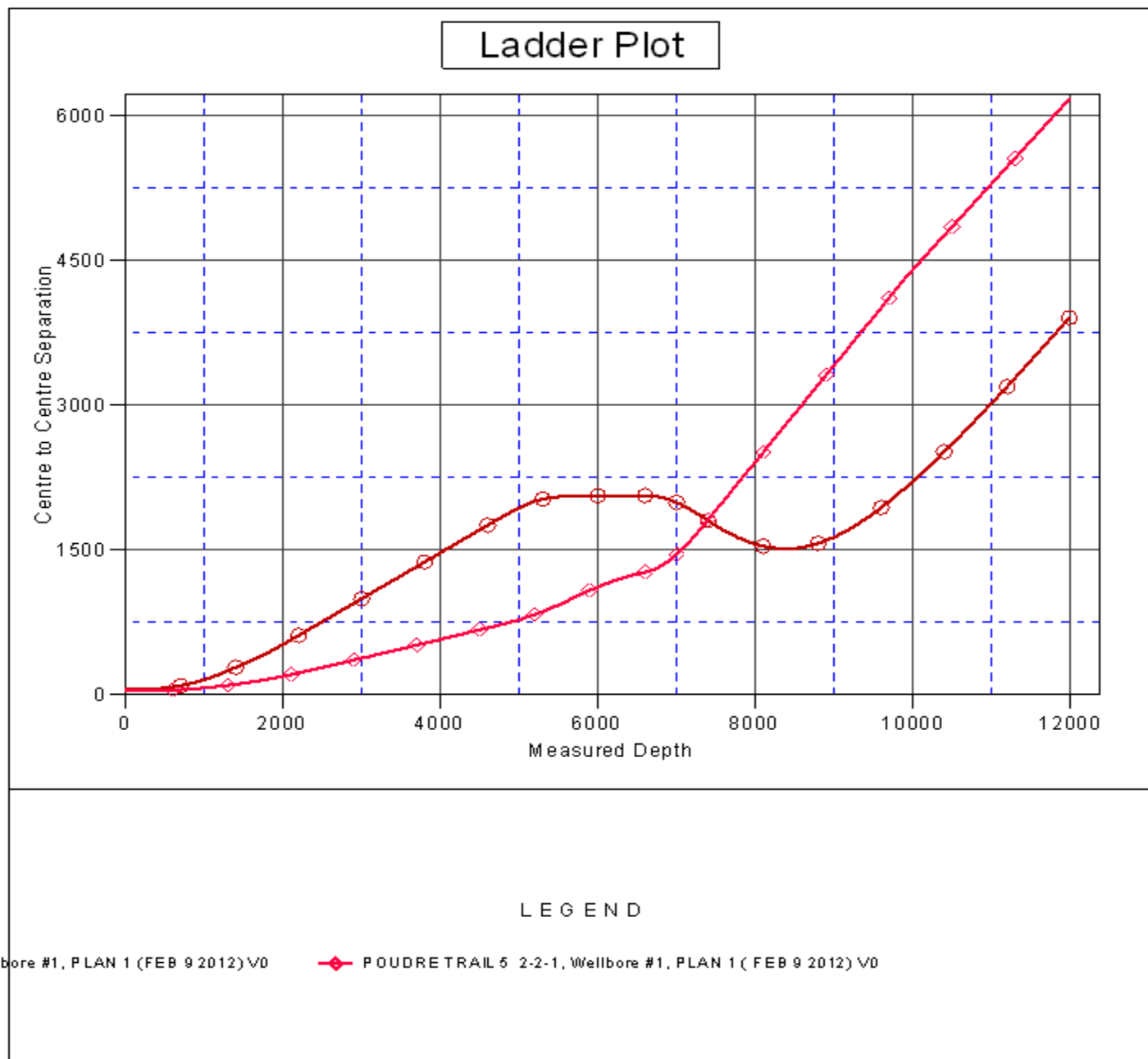
Offset Depths are relative to Offset Datum

Central Meridian is -105.500000 °

Coordinates are relative to: BESTWAY 12-2

Coordinate System is US State Plane 1983, Colorado Northern Zone

Grid Convergence at Surface is: 0.49°



<b>Company:</b>	Mineral Resources Inc	<b>Local Co-ordinate Reference:</b>	Well BESTWAY 12-2
<b>Project:</b>	SEC.2-T5N-R66W	<b>TVD Reference:</b>	RKB @ 4714.0ft (RKB RIG 14)
<b>Reference Site:</b>	BESTWAY HOR PAD 2-5N-66W	<b>MD Reference:</b>	RKB @ 4714.0ft (RKB RIG 14)
<b>Site Error:</b>	0.0ft	<b>North Reference:</b>	True
<b>Reference Well:</b>	BESTWAY 12-2	<b>Survey Calculation Method:</b>	Minimum Curvature
<b>Well Error:</b>	0.0ft	<b>Output errors are at</b>	2.00 sigma
<b>Reference Wellbore</b>	Wellbore #1	<b>Database:</b>	Landmark
<b>Reference Design:</b>	PLAN 1 (FEB 9 2012)	<b>Offset TVD Reference:</b>	Offset Datum

Reference Depths are relative to RKB @ 4714.0ft (RKB RIG 14)  
Offset Depths are relative to Offset Datum  
Central Meridian is -105.500000 °

Coordinates are relative to: BESTWAY 12-2  
Coordinate System is US State Plane 1983, Colorado Northern Zone  
Grid Convergence at Surface is: 0.49°

