

T6N, R67W, 6th P.M. **GREAT WESTERN OIL & GAS COMPANY**

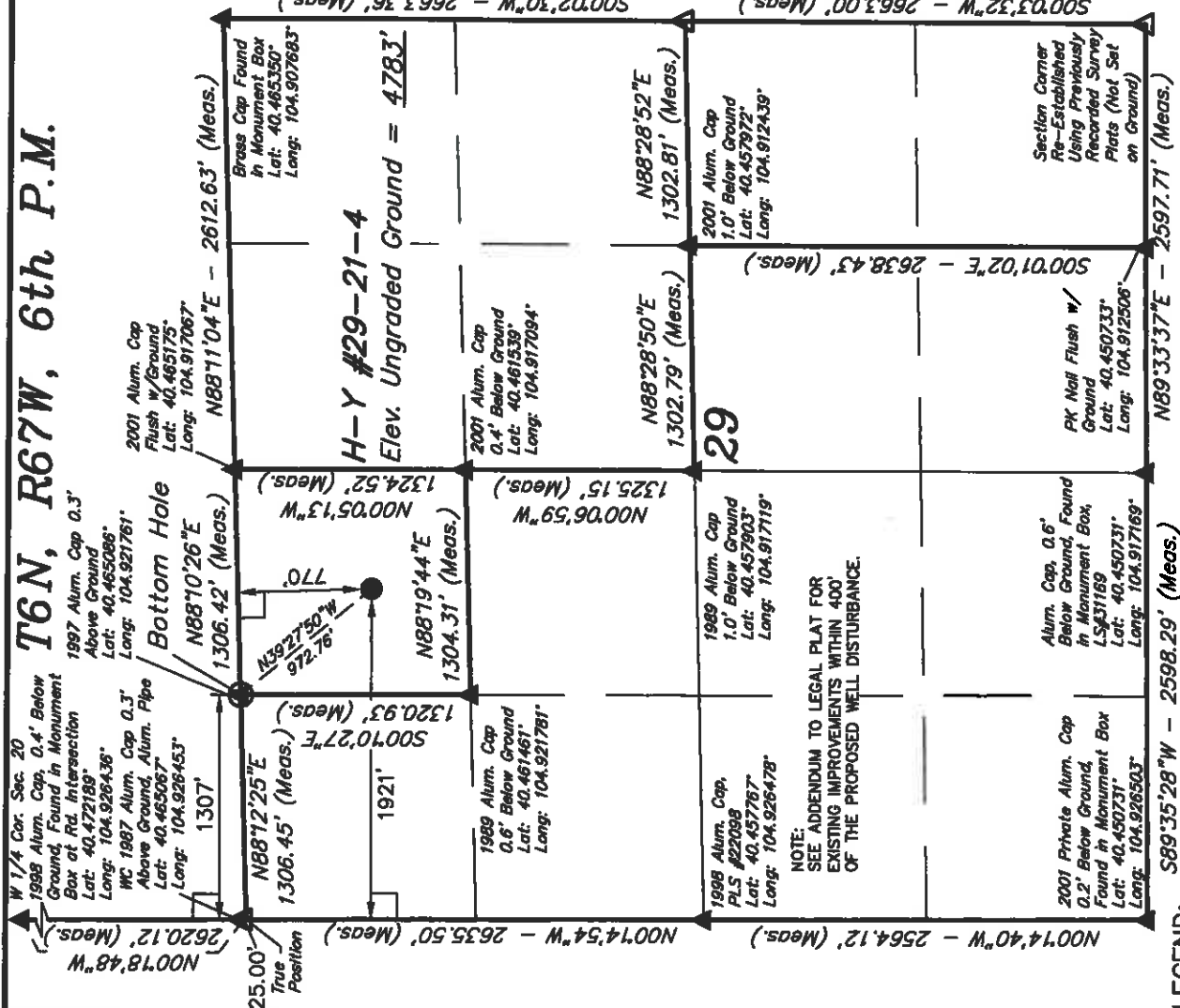
Well location, H-Y #29-21-4, located as shown in the NE 1/4 NW 1/4 of Section 29, T6N, R67W, 6th P.M., Weld County, Colorado.

BASIS OF ELEVATION

USGS COOPERATIVE BASE NETWORK CONTROL STATION, DESIGNATION 'VERMILYEA', NGS DATA SHEET LISTS THE NAVD 88 ELEVATION AS BEING 5026 FEET

BASIS OF BEARINGS

BASIS OF BEARINGS IS A G.P.S. OBSERVATION.



CERTIFICATE

THIS IS TO CERTIFY THAT THE ABOVE PLAT WAS PREPARED FROM FIELD NOTES OF ACTUAL SURVEYS MADE BY ME OR UNDER MY SUPERVISION AND THAT THE SAME ARE TRUE AND CORRECT TO THE BEST OF MY KNOWLEDGE AND BELIEF.

REGISTERED LAND SURVEYOR
REGISTRATION NO. 17432
STATE OF COLORADO 02-29-12

REVISED: 02-29-12

UNTAH ENGINEERING & LAND SURVEYING

85 SOUTH 200 EAST - VERNAL, UTAH 84078

(436) 789-1017

SCALE	1" = 1000'	DATE SURVEYED:	02-07-12	DATE DRAWN:	02-10-12
PARTY	L.S. A.J. S.L.	REFERENCES	G.L.O. PLAT		
WEATHER	COOL	FILE			
					GREAT WESTERN OIL & GAS COMPANY

PDOP = 2.2

NAD 83 (SURFACE LOCATION)	NAD 83 (TARGET BOTTOM HOLE)	NAD 83 (SURFACE LOCATION)
Latitude = 40°27'54.31" (40.465086)	Latitude = 40°27'54.31" (40.465086)	Latitude = 40°27'46.84" (40.463011)
Longitude = 104°55'18.34" (104.921761)	Longitude = 104°55'18.34" (104.921761)	Longitude = 104°55'10.41" (104.919558)
NAD 27 (TARGET BOTTOM HOLE)	NAD 27 (TARGET BOTTOM HOLE)	NAD 27 (SURFACE LOCATION)
Latitude = 40°27'54.37" (40.465103)	Latitude = 40°27'54.37" (40.465103)	Latitude = 40°27'46.90" (40.463028)
Longitude = 104°55'18.43" (104.921231)	Longitude = 104°55'18.43" (104.921231)	Longitude = 104°55'08.50" (104.919028)

LEGEND:

- = 90° SYMBOL
- = PROPOSED WELL HEAD.
- ▲ = SECTION CORNERS LOCATED.
- △ = SECTION CORNERS RE-ESTABLISHED.
- (Not Set on Ground.)

NOTE:
SEE ADDENDUM TO LEGAL PLAT FOR
EXISTING IMPROVEMENTS WITHIN 400'
OF THE PROPOSED WELL DISTURBANCE.