

T6N, R67W, 6th P.M.

GREAT WESTERN OIL & GAS COMPANY

Well location, H-Y #20-23-18 (SURFACE LOCATION), located as shown in the NE 1/4 NW 1/4 of Section 29, T6N, R67W, 6th P.M., Weld County, Colorado.

BASIS OF ELEVATION

USGS COOPERATIVE BASE NETWORK CONTROL STATION, DESIGNATION 'VERMILYEA', NGS DATA SHEET LISTS THE NAVD 88 ELEVATION AS BEING 5026 FEET

BASIS OF BEARINGS

BASIS OF BEARINGS IS A G.P.S. OBSERVATION.

LINE TABLE		
LINE	DIRECTION	LENGTH
L1	N18°10'49"E	2177.27'

Section Corner
Re-Established
Using Previously
Recorded Survey
Plats (Not Set
on Ground)



SCALE

CERTIFICATE

THIS IS TO CERTIFY THAT THE ABOVE PLAT WAS PREPARED FROM FIELD NOTES OF ACTUAL SURVEYS MADE BY ME OR UNDER MY SUPERVISION AND THAT THE SAME ARE TRUE AND CORRECT TO THE BEST OF MY KNOWLEDGE AND BELIEF.

REGISTERED LAND SURVEYOR
REGISTRATION NO. 17493
STATE OF COLORADO
02-16-12

UINTAH ENGINEERING & LAND SURVEYING

85 SOUTH 200 EAST - VERNAL, UTAH 84078

(435) 789-1017

PDOP = 2.1

SCALE 1" = 1000'

DATE SURVEYED: 02-07-12

DATE DRAWN: 02-10-12

NAD 83 (SURFACE LOCATION)
LATITUDE = 40°27'47.30" (40.463139)
LONGITUDE = 104°55'10.23" (104.919508)

PARTY L.S. A.J. S.L. G.L.O. PLAT

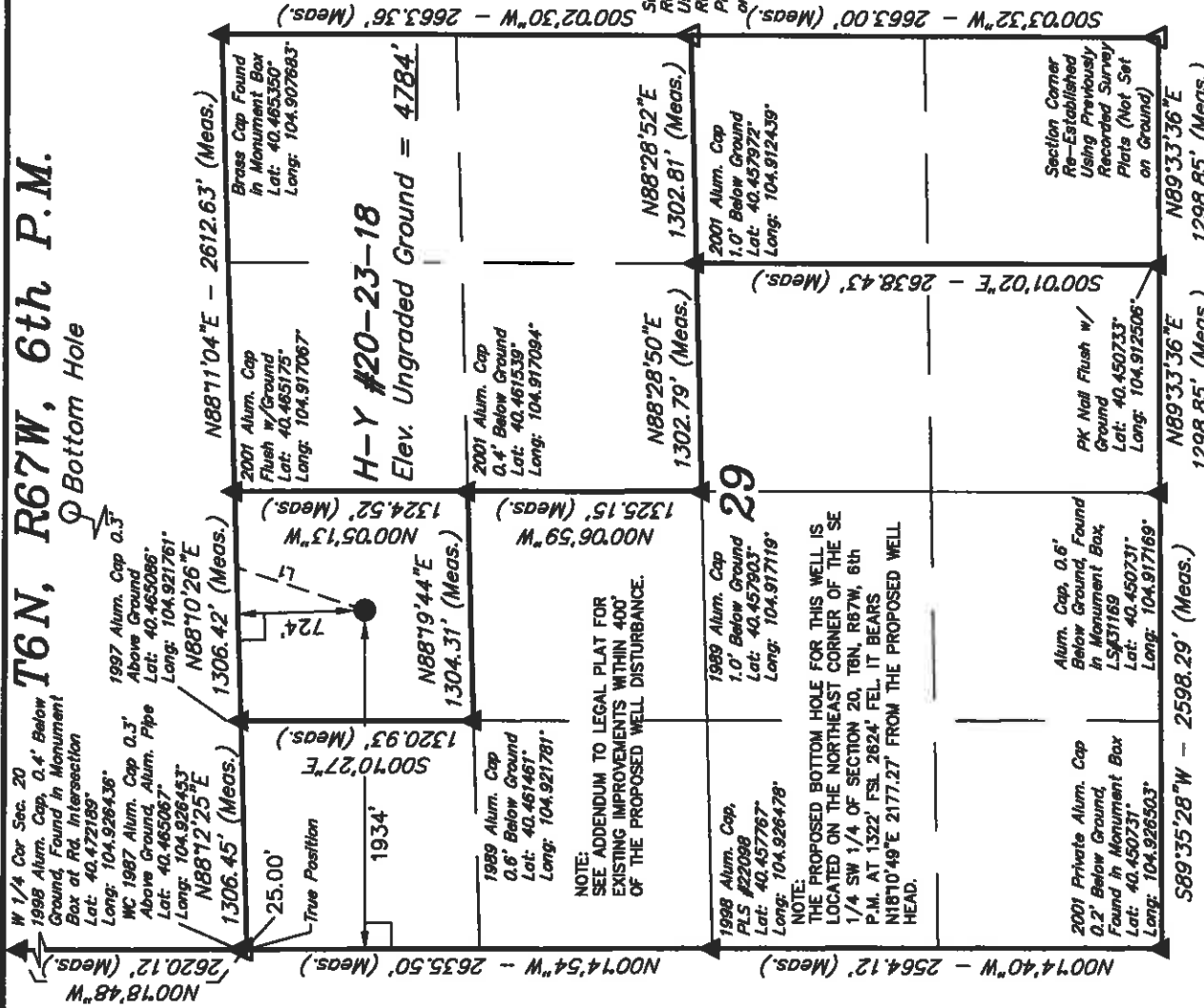
NAD 27 (SURFACE LOCATION)
LATITUDE = 40°27'47.36" (40.463156)
LONGITUDE = 104°55'08.32" (104.918978)

WEATHER COOL

FILE GREAT WESTERN OIL & GAS COMPANY

LEGEND:

- = 90° SYMBOL
- = PROPOSED WELL HEAD.
- ▲ = SECTION CORNERS LOCATED.
- △ = SECTION CORNERS RE-ESTABLISHED. (Not Set on Ground.)



T6N, R67W, 6th P.M.

GREAT WESTERN OIL & GAS COMPANY

Well location, H-Y #20-23-18 (TARGET BOTTOM HOLE), located as shown in the S 1/2 of Section 20, T6N, R67W, 6th P.M., Weld County, Colorado.

BASIS OF ELEVATION

USGS COOPERATIVE BASE NETWORK CONTROL STATION, DESIGNATION 'VERMILYEA', NGS DATA SHEET LISTS THE NAVD 88 ELEVATION AS BEING 5026 FEET

BASIS OF BEARINGS

BASIS OF BEARINGS IS A G.P.S. OBSERVATION.



CERTIFICATE

THIS IS TO CERTIFY THAT THE ABOVE PLAT WAS PREPARED FROM FIELD NOTES OF ACTUAL SURVEYS MADE BY ME OR UNDER MY SUPERVISION AND THAT THE SAME ARE TRUE AND CORRECT TO THE BEST OF MY KNOWLEDGE AND BELIEF.

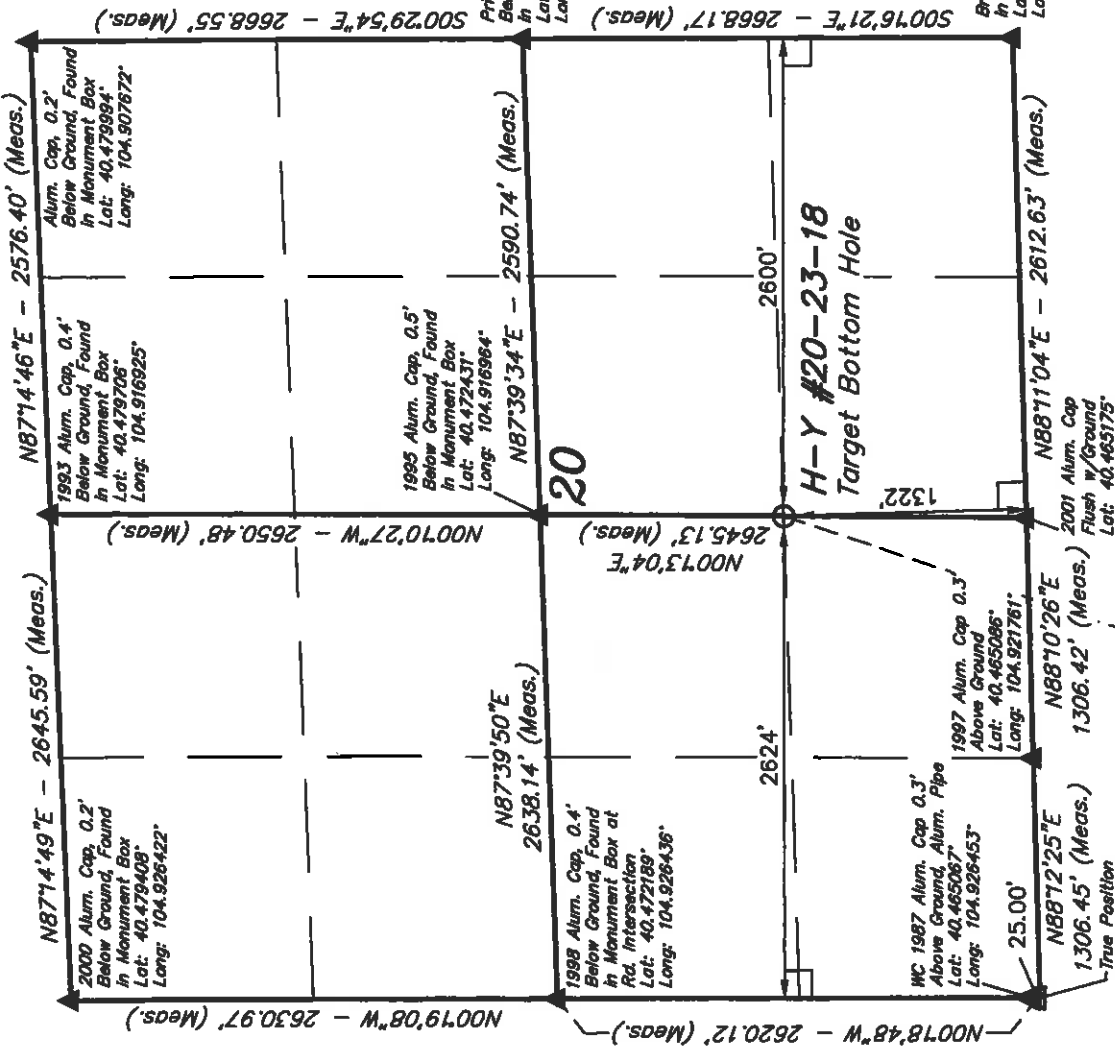
REGISTERED LAND SURVEYOR
REGISTRATION NO. 17492
STATE OF COLORADO 02-16-12

UTAH ENGINEERING & LAND SURVEYING

86 SOUTH 200 EAST - VERNAL, UTAH 84078

(435) 789-1017

SCALE	1" = 1000'	DATE SURVEYED:	02-07-12	DATE DRAWN:	02-10-12
PARTY	L.S. A.J. S.L.	REFERENCES	G.L.O. PLAT		
WEATHER	COOL	FILE			
					GREAT WESTERN OIL & GAS COMPANY



NOTE:
THE PROPOSED BOTTOM HOLE BEARS N18°10'49"E 2177.27' FROM THE PROPOSED WELL HEAD WHICH IS LOCATED IN THE NE 1/4 NW 1/4 OF SECTION 29, T6N, R67W, 6th P.M. AT 724' FNL 1934' FWL.

NAD 83 (TARGET BOTTOM HOLE)
LATITUDE = 40°28'07.89" (40.468803)
LONGITUDE = 104°55'01.28" (104.917017)
NAD 27 (TARGET BOTTOM HOLE)
LATITUDE = 40°28'07.75" (40.468819)
LONGITUDE = 104°54'59.38" (104.916489)

LEGEND:

- = 90° SYMBOL
- = PROPOSED WELL HEAD.
- ▲ = SECTION CORNERS LOCATED.
- Δ = SECTION CORNERS RE-ESTABLISHED. (Not Set on Ground.)