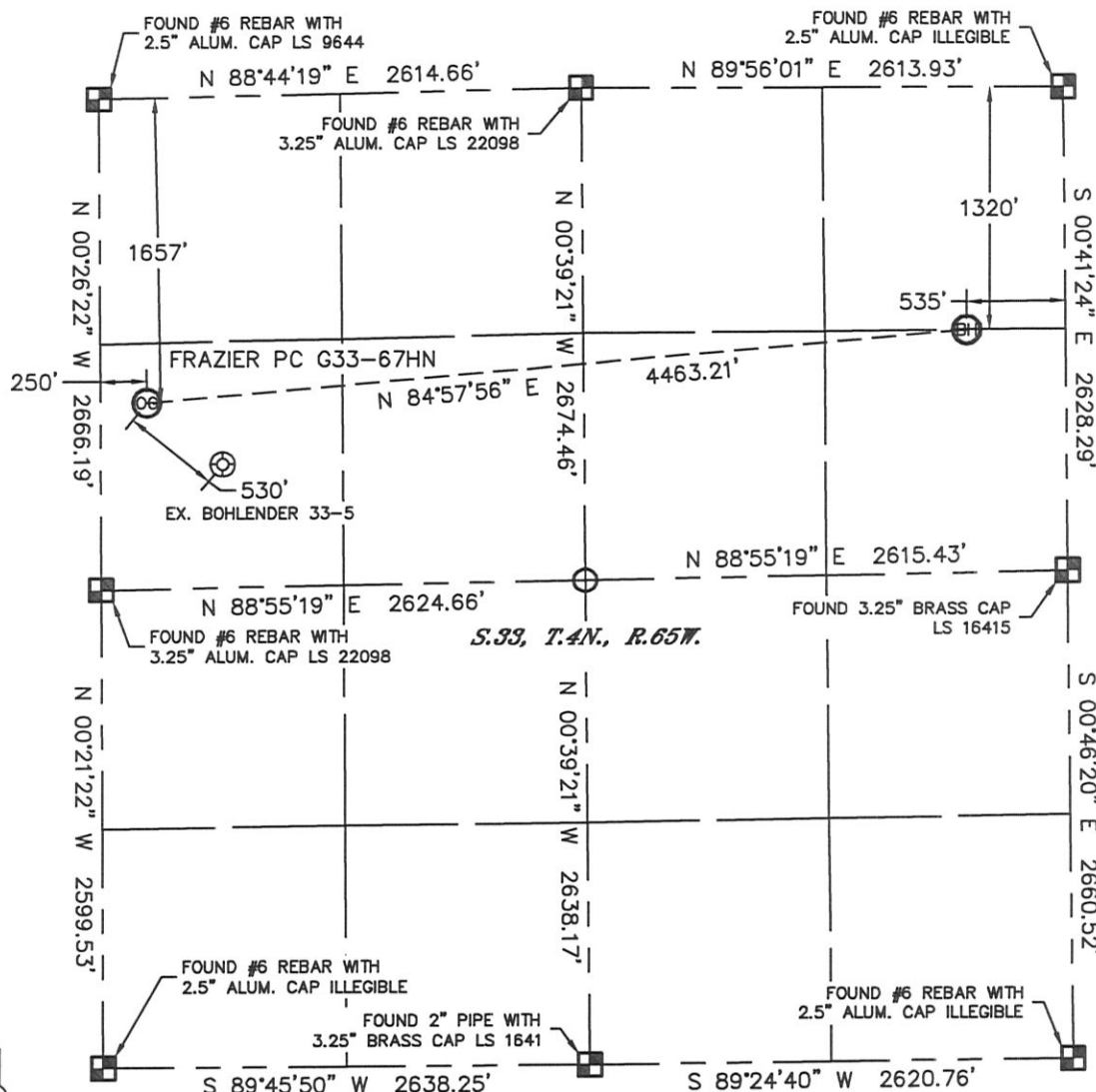


Lat40°, Inc. 1635 Foxtrail Drive, Suite 325 Loveland, CO 970-776-3321

WELL LOCATION CERTIFICATE

THIS MAP DOES NOT REPRESENT A BOUNDARY SURVEY

SECTION: 33
TOWNSHIP: 4N
RANGE: 65W



In accordance with a request from Jim Curry with Noble Energy Inc., Lat40°, Inc. has determined the surface location of the FRAZIER PC G33-67HN to be 1657' from the NORTH line and 250' from the WEST line and the bottom hole to be 1320' from the NORTH line and 535' from the EAST line as measured at right angles from the section lines of Section 33, Township 4 North, Range 65 West of the Sixth Principal Meridian, County of Weld, State of Colorado.

I hereby state that this Well Location Certificate was prepared by me, or under my direct supervision, that the fieldwork was completed on 10/18/11, for and on behalf of Noble Energy Inc. That this is not a Land Survey Plat or an Improvement Survey Plat, and that it is not to be relied upon for establishment of fence, building, or other future improvement lines.

NOTE:

- 1) Bearings shown are Grid Bearings of the Colorado State Plane Coordinate System, North Zone, North American Datum 1983/2007. The lineal dimensions as contained herein are based upon the "U.S. Survey Foot."
- 2) Ground elevations are based on an observed GPS elevation (NAVD 1988 DATUM).
- 3) NEAREST EXISTING WELL: BOHLENDER 33-5, 530'
- 4) IMPROVEMENTS: See LOCATION DRAWING for all visible Improvements within 400' of disturbed area.
- 5) SURFACE USE: RANGELAND
- 6) INSTRUMENT OPERATOR: KYLE RUTZ

NOTE

According to Colorado law, you must commence any legal action based upon any defect in this W.L.C. within three years after you discover such defect. In no event, may any action based upon any defect in this survey be commenced more than ten years after the date of the certificate shown hereon. (13-80-105 C.R.S.)

LEGEND

- = ALIQUOT MONUMENT AS DESCRIBED
- = CALCULATED POSITION

SURFACE LOCATION
LATITUDE: 40.27156°N
LONGITUDE: 104.67678°W
PDOP: 2.2
ELEV: 4834'
1/4, 1/4: SW1/4NW1/4
NEAREST PROPERTY LINE: 250' W

BOTTOM HOLE
LATITUDE: 40.27252°N
LONGITUDE: 104.66084°W



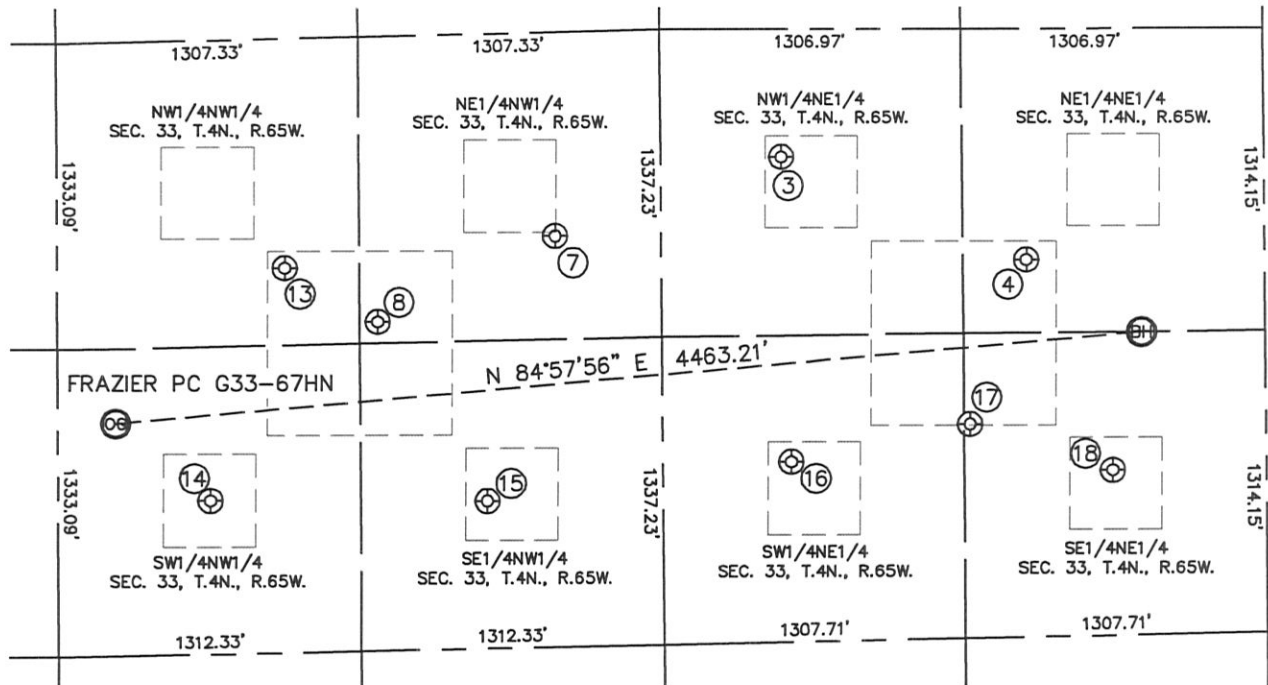
Brian T. Brinkman—On behalf of Lat40°, Inc.
Colorado Licensed Professional
Land Surveyor No. 38175

PROJECT#: 2011279

SITE SKETCH

FRAZIER PC G33-67HN

SECTION: 33
TOWNSHIP: 4N
RANGE: 65W



③

CPC BOHLENDER 33-1
NW1/4NE1/4
556' FNL
2090' FEL
LAT-40.27465°N
LONG-104.66642°W
PDOP: 1.5
ELEV: 4816'

④

CPC BOHLENDER 33-3
NE1/4NE1/4
1005' FNL
1032' FEL
LAT-40.27340°N
LONG-104.66263°W
PDOP: 1.0
ELEV: 4797'

⑦

BOHLENDER 33-6
NE1/4NW1/4
888' FNL
2159' FEL
LAT-40.27374°N
LONG-104.669994°W
PDOP: 1.6
ELEV: 4834

⑧

BOHLENDER 33-25
NE1/4NW1/4
1243' FNL
1387' FEL
LAT-40.27274°N
LONG-104.67271°W
PDOP: 1.7
ELEV: 4826

⑬

BOHLENDER 33-22
NW1/4NW1/4
1000' FNL
985' FEL
LAT-40.27339°N
LONG-104.67415°W
PDOP: 1.9
ELEV: 4839'

⑭

BOHLENDER 33-5
SW1/4NW1/4
2000' FNL
660' FEL
LAT-40.27063°N
LONG-104.67532°W
PDOP: 2.3
ELEV: 4827'

⑮

BOHLENDER 33-7
SE1/4NW1/4
2031' FNL
1860' FEL
LAT-40.27059°N
LONG-104.67102°W
PDOP: 2.1
ELEV: 4824'

⑯

CPC BOHLENDER 33-4
SW1/4NE1/4
1881' FNL
2058' FEL
LAT-40.27102°N
LONG-104.66629°W
PDOP: 2.2
ELEV: 4807'

⑰

FRAZIER 33-15
SE1/4NE1/4
1719' FNL
1282' FEL
LAT-40.27144°N
LONG-104.66351°W
PDOP: 2.3
ELEV: 4791'

⑱

BOHLENDER 33-2
SE1/4NE1/4
1920' FNL
665' FEL
LAT-40.27088°N
LONG-104.66130°W
PDOP: 3.2
ELEV: 4782'

