

**Well Name: BOHLENDER H14-15**

Well Config: VERTICAL - ORIGINAL HOLE, 3/13/2012 2:16:15 PM

## Well Header

API	Business Unit		Spud Date		Well Configuration Type	
05-123-15746	WATTENBERG		5/13/1992		VERTICAL	
Orig KB Elev (ft)	KB - GL / ...	Quarter Quarter	Sec/Abs	Twn/Sur...	Range	P & A Date
4,830.00	12	SWSE	14	3N	65W	
Comment						

Directions To Well  
WCR 47 AND 34.5, SOUTH 1.1 MILES GO WEST THRU GREEN GATE AND FOLLOW ROAD BACK 1.5 MILES GOING THRU ANOTHER 3 GATES.

Current PBDT (ftKB)

ORIGINAL HOLE - 7142.1

## Bottom Hole Location

North-South Distance (ft)	From N or S Line	East-West Distance (ft)	From E or W Line

## PBDTs

Date	Depth (ftKB)	Method	Comment
5/19/1992	7,253.0	CASING TALLY	CASING SUB
5/26/1992	7,195.0	CASED HOLE LOG	DEPTH LOGGER

## Wellbore Sections

Section	Size (in)	Act Top (ftKB)	Act Btm (ftKB)
SURFACE	12 1/4	12.0	555.0
PRODUCTION	7 7/8	555.0	7,256.0

## Zone Statuses

Zone	Status Date	Status	Job
CODELL	8/20/1992	PR	DRILLING/COMPLETION - ORIGI...
SUSSEX	9/16/1992	PR	RECOMPLETION, 8/31/1992 00:00
SUSSEX	6/3/2002	AB	RE-FRAC, 5/31/2002 00:00
CODELL	6/20/2002	PR	RE-FRAC, 5/31/2002 00:00
CODELL	11/15/2011	PR	TRI-FRAC, 8/30/2011 06:00

## Casing Strings

Casing Description	Run Date	String OD (in)	String Wt (lbs/ft)	String Grade	Top (ftKB)	Set Depth (ftKB)
Surface	5/13/1992	8 5/8	24.00		12.0	551.0
Production	5/20/1992	3 1/2	9.20	N-80	12.0	7,256.0

## Cement

Description	Top (ftKB)	Btm (ftKB)
SURFACE CASING CEMENT	12.0	551.0
PRODUCTION CASING CEMENT	3,926.0	7,256.0
CEMENT SQUEEZE SUSSEX	4,226.0	4,470.0

## Tubing Components

Item Description	OD (in)	Wt (lbs/ft)	Grade	Jts	Len (ft)
Tubing	2 1/16	3.25	J-55	219	7,033.01
Seating Nipple	2 1/16			1	1.00

## Perforation Data

Zone	Bnch/Stg	Entered Shot Total	Top (ftKB)	Btm (ftKB)	Date
SUSSEX, ORIGINA...		60	4,415.0	4,465.0	8/31/1992
CODELL, ORIGINA...		52	7,084.0	7,097.0	6/6/2002
CODELL, ORIGINA...		48	7,085.0	7,097.0	5/26/1992

## Stimulations & Treatments

Bnch/...	Date	Zone	Primary Job Type
	5/29/1992	CODELL, ORIGINAL HOLE	DRILLING/COMPLETION - ORIGINAL

Comment

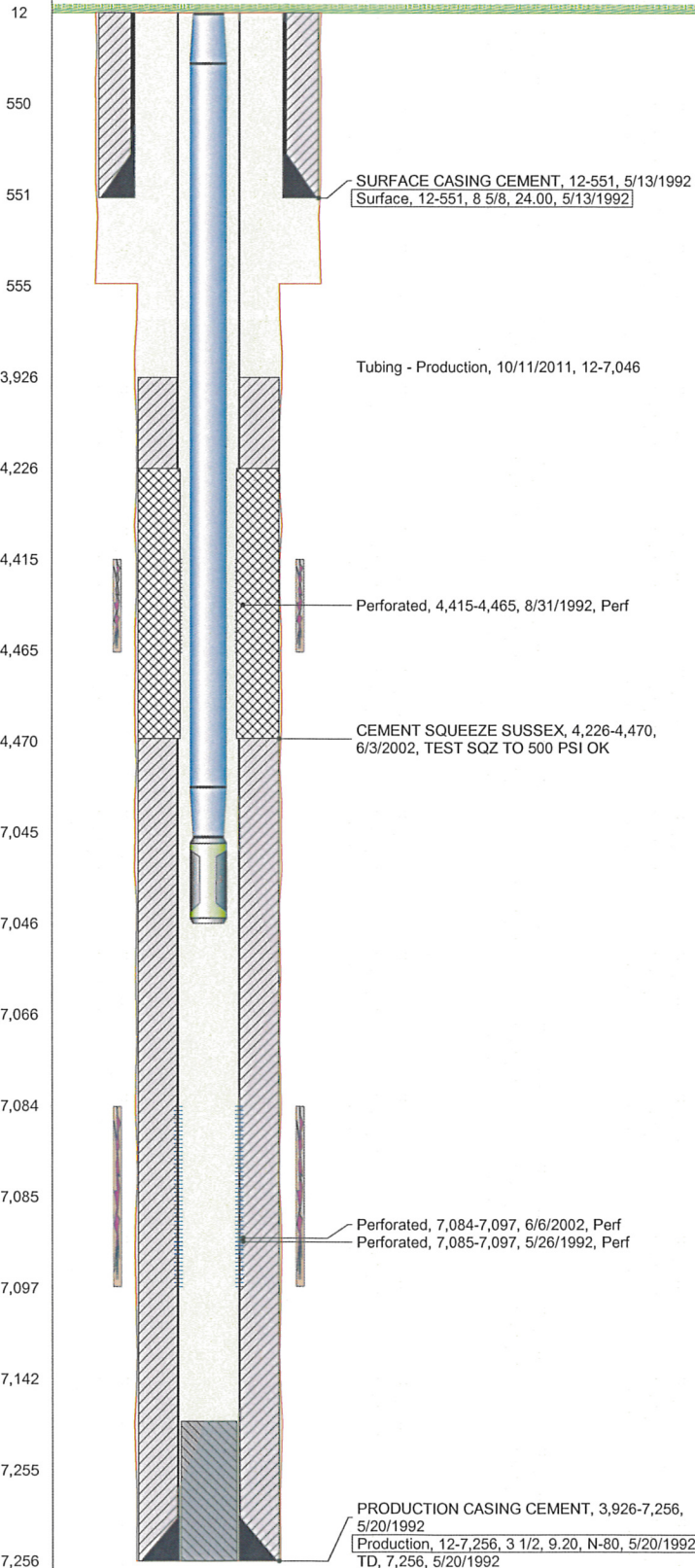
Total Add Amount	V (pumped) (gal)	V (slurry) (gal)	V (gas) (mcf)
Proppant 170000 lb		61194	
Avg Treat Pressure (psi)	Max Treat Pressure (psi)	Avg Treat Rate (bbl/min)	Max Treat Rate (bbl/min)
4,200.0	5,500.0	16.50	16.50

Bnch/...	Date	Zone	Primary Job Type
	9/1/1992	SUSSEX, ORIGINAL HOLE	RECOMPLETION

Comment

Total Add Amount	V (pumped) (gal)	V (slurry) (gal)	V (gas) (mcf)
Proppant 244000 0 lb		71610	
Avg Treat Pressure (psi)	Max Treat Pressure (psi)	Avg Treat Rate (bbl/min)	Max Treat Rate (bbl/min)
2,300.0	2,860.0	25.00	25.00

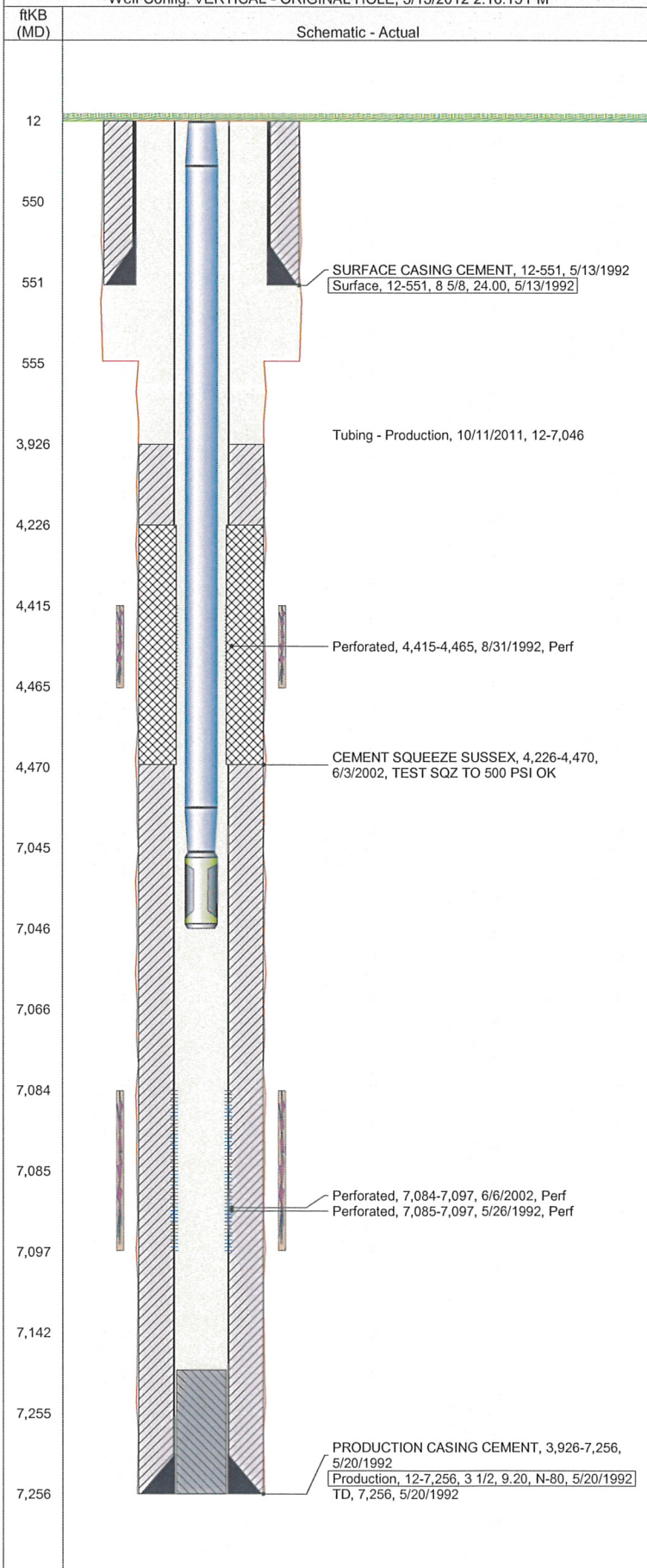
Comment





Well Name: **BOHLENDER H14-15**

Well Config: VERTICAL - ORIGINAL HOLE, 3/13/2012 2:16:15 PM



## Stimulations & Treatments

Bnch/...	Date	Zone	Primary Job Type
	6/19/2002	CODELL, ORIGINAL HOLE	RE-FRAC
Comment			
Total Add Amount		V (pumped) (gal)	V (slurry) (gal)
Proppant Ottawa 244920 lb		5605992	133476
Avg Treat Pressure (psi)	Max Treat Pressure (psi)	Avg Treat Rate (bbl/min)	Max Treat Rate (bbl/min)
6,100.0	6,812.0	10.90	11.10
Bnch/...	Date	Zone	Primary Job Type
	9/22/2011	CODELL, ORIGINAL HOLE	TRI-FRAC
Comment			
Swedge at wellhead was leaking when pressure tested tubing. Changed valve and swedge. Pressure tested again, but problems. Slickline ran. Tagged at 7016, right at switchover above packer, so rigged down for the day.			
Total Add Amount		V (pumped) (gal)	V (slurry) (gal)
Avg Treat Pressure (psi)	Max Treat Pressure (psi)	Avg Treat Rate (bbl/min)	Max Treat Rate (bbl/min)
Bnch/...	Date	Zone	Primary Job Type
	10/5/2011	CODELL, ORIGINAL HOLE	TRI-FRAC
Comment			
CODELL TRIFRAC, COULD NOT START PACKER LEAK DURING PACKER TEST			
Total Add Amount		V (pumped) (gal)	V (slurry) (gal)
Avg Treat Pressure (psi)	Max Treat Pressure (psi)	Avg Treat Rate (bbl/min)	Max Treat Rate (bbl/min)
5,868.0	6,305.0		
Bnch/...	Date	Zone	Primary Job Type
	10/7/2011	CODELL, ORIGINAL HOLE	TRI-FRAC
Comment			
CODELL TRIFRAC, JOB DELAYED 30MIN WAITING FOR RIG CREW TO ARRIVE AT 06:30HRS. WAITED 1.5HRS FOR ADDITIONAL WATER. SEVERAL ATTEMPTS TO RESEAT COMPRESSION PACKER BEFORE SEAL ACHIEVED AT 09:30HRS. PRE-JOB ISIP DATA TAKEN DURING PACKER TEST.			
Total Add Amount		V (pumped) (gal)	V (slurry) (gal)
Proppant OTTAWA 242532.801 LB		128716	139697
Avg Treat Pressure (psi)	Max Treat Pressure (psi)	Avg Treat Rate (bbl/min)	Max Treat Rate (bbl/min)
6,915.0	7,204.0		

## Other In Hole

Run Date	Description	OD (in)	Top (ftKB)	Btm (ftKB)

## Logs

Date	Type	Top (ftKB)	Btm (ftKB)
5/18/1992	COMPENSATED DENSITY	4,300.0	7,258.0
5/18/1992	INDUCTION	4,300.0	4,650.0
5/26/1992	CBL/CCL/GR	3,800.0	7,195.0