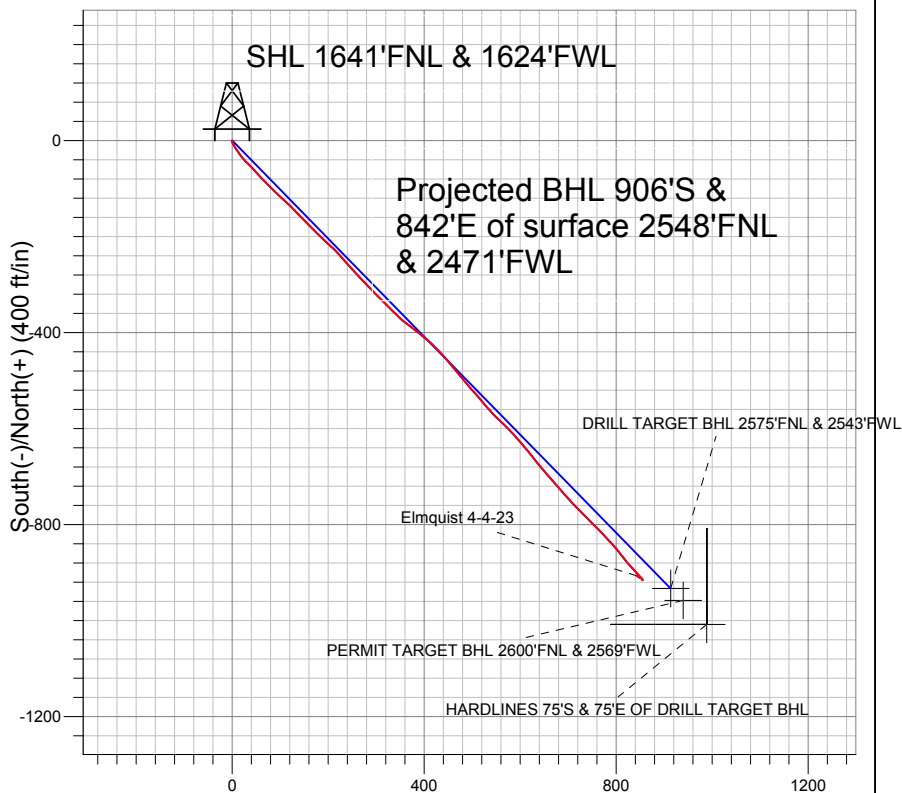
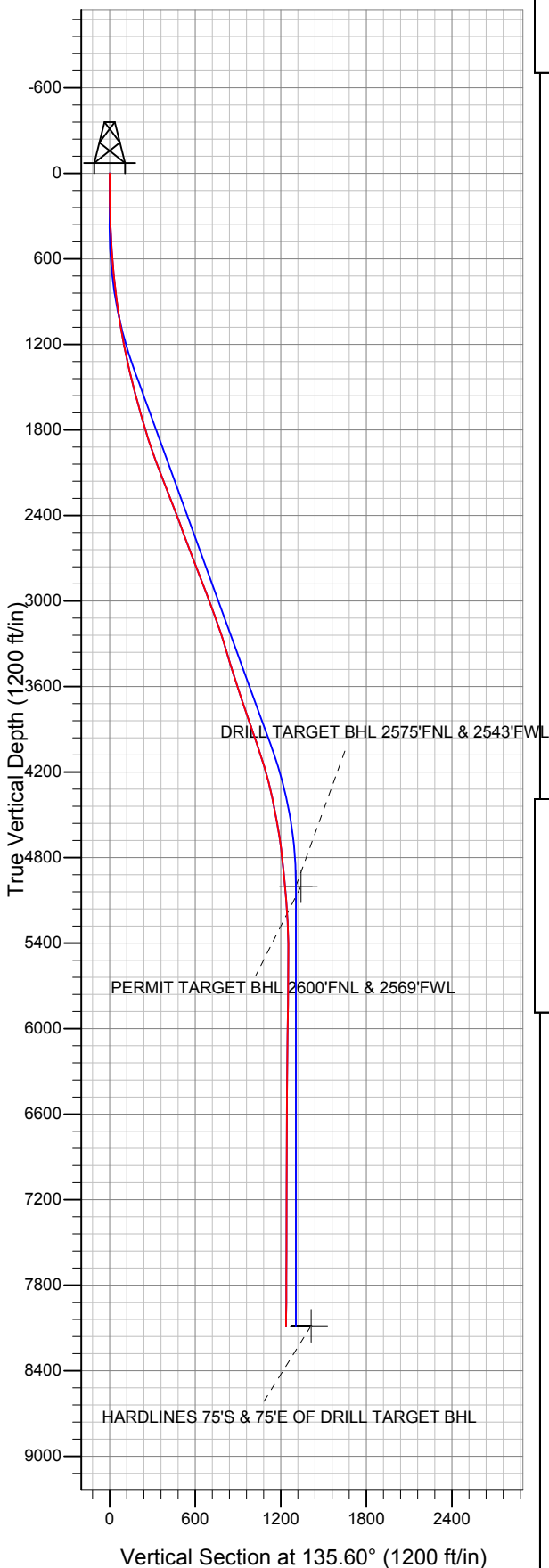


EnCana Oil & Gas Weld County CO



LEGEND

- Wellbore #1
- Elmquist 4-4-23, Wellbore #1, Plan #1 (12-19-11) R V0
- Survey #1

Final Survey Plot

Projected Final Survey -
 8270'MD & 8086'TVD @ 1237' VS
 0.4 deg Inc 235.8 deg AZ

Project: SEC.23-T2N-R68W
 Site: Elmquist 2-4-23 Pad Sec.23-T2N-R68W
 Well: Elmquist 4-4-23
 Plan: Wellbore #1



Directional

EnCana Oil & Gas Weld County CO

SEC.23-T2N-R68W

Elmqvist 2-4-23 Pad Sec.23-T2N-R68W

Elmqvist 4-4-23

Wellbore #1

Survey: Survey #1

Standard Survey Report

27 December, 2011

Survey	Survey Data									
	Measured Depth (ft)	Inclination (°)	Azimuth (°)	Vertical Depth (ft)	+N/-S (ft)	+E/-W (ft)	Vertical Section (ft)	Dogleg Rate (°/100ft)	Build Rate (°/100ft)	Turn Rate (°/100ft)
	0.0	0.00	0.00	0.0	0.0	0.0	0.0	0.00	0.00	0.00
	102.0	0.70	172.70	102.0	-0.6	0.1	0.5	0.69	0.69	0.00
	194.0	1.10	178.30	194.0	-2.1	0.2	1.6	0.44	0.43	6.09
	286.0	1.90	162.50	286.0	-4.4	0.7	3.6	0.97	0.87	-17.17
	377.0	2.30	150.20	376.9	-7.4	2.0	6.7	0.66	0.44	-13.52
	469.0	2.70	153.90	468.8	-11.0	3.9	10.6	0.47	0.43	4.02
	561.0	3.80	144.70	560.7	-15.4	6.6	15.6	1.32	1.20	-10.00
	652.0	5.80	147.00	651.3	-21.7	10.9	23.1	2.21	2.20	2.53
	734.0	6.20	144.20	732.9	-28.8	15.7	31.6	0.60	0.49	-3.41
	798.0	6.80	141.20	796.5	-34.5	20.1	38.7	1.08	0.94	-4.69
	863.0	6.10	138.00	861.1	-40.1	24.8	46.0	1.21	-1.08	-4.92
	951.0	7.10	132.10	948.5	-47.2	32.0	56.1	1.37	1.14	-6.70
	1,038.0	10.10	138.00	1,034.5	-56.5	41.1	69.1	3.59	3.45	6.78

Company:	EnCana Oil & Gas Weld County CO	Local Co-ordinate Reference:	Well Elmquist 4-4-23
Project:	SEC.23-T2N-R68W	TVD Reference:	WELL @ 4930.0ft (Original Well Elev)
Site:	Elmquist 2-4-23 Pad Sec.23-T2N-R68W	MD Reference:	WELL @ 4930.0ft (Original Well Elev)
Well:	Elmquist 4-4-23	North Reference:	True
Wellbore:	Wellbore #1	Survey Calculation Method:	Minimum Curvature
Design:	Wellbore #1	Database:	Landmark

Survey

Measured Depth (ft)	Inclination (°)	Azimuth (°)	Vertical Depth (ft)	+N/-S (ft)	+E/-W (ft)	Vertical Section (ft)	Dogleg Rate (°/100ft)	Build Rate (°/100ft)	Turn Rate (°/100ft)
1,125.0	10.10	137.90	1,120.1	-67.8	51.3	84.4	0.02	0.00	-0.11
1,213.0	11.60	135.90	1,206.6	-79.9	62.6	100.9	1.76	1.70	-2.27
1,300.0	12.40	135.80	1,291.7	-92.9	75.2	119.0	0.92	0.92	-0.11
1,387.0	13.20	134.20	1,376.5	-106.5	88.9	138.3	1.01	0.92	-1.84
1,474.0	13.90	131.70	1,461.1	-120.4	103.8	158.6	1.05	0.80	-2.87
1,562.0	14.30	133.50	1,546.4	-134.9	119.6	180.0	0.67	0.45	2.05
1,649.0	15.00	136.50	1,630.6	-150.5	135.1	202.0	1.19	0.80	3.45
1,736.0	16.40	137.00	1,714.4	-167.6	151.2	225.6	1.62	1.61	0.57
1,824.0	17.10	133.50	1,798.6	-185.6	169.1	250.9	1.39	0.80	-3.98
1,911.0	17.90	133.00	1,881.6	-203.5	188.1	277.1	0.94	0.92	-0.57
1,998.0	18.60	133.70	1,964.2	-222.2	208.0	304.3	0.84	0.80	0.80
2,086.0	20.80	139.80	2,047.1	-243.9	228.2	333.9	3.42	2.50	6.93
2,173.0	21.20	136.60	2,128.3	-267.1	249.0	365.0	1.40	0.46	-3.68
2,260.0	22.00	137.00	2,209.2	-290.4	270.9	397.1	0.93	0.92	0.46
2,347.0	21.30	135.90	2,290.0	-313.7	293.0	429.1	0.93	-0.80	-1.26
2,435.0	20.80	134.70	2,372.2	-336.2	315.2	460.8	0.75	-0.57	-1.36
2,522.0	20.20	135.90	2,453.7	-357.8	336.7	491.2	0.84	-0.69	1.38
2,609.0	20.00	128.90	2,535.4	-378.0	358.7	521.0	2.77	-0.23	-8.05
2,697.0	21.40	126.40	2,617.7	-396.9	383.3	551.8	1.88	1.59	-2.84
2,784.0	20.80	132.20	2,698.9	-416.7	407.6	582.9	2.50	-0.69	6.67
2,871.0	21.50	135.20	2,780.0	-438.4	430.2	614.3	1.48	0.80	3.45
2,959.0	20.70	139.80	2,862.1	-461.8	451.6	645.9	2.09	-0.91	5.23
3,046.0	21.40	141.60	2,943.3	-485.9	471.4	677.0	1.10	0.80	2.07
3,133.0	20.10	138.80	3,024.7	-509.6	491.1	707.7	1.88	-1.49	-3.22
3,220.0	19.80	138.60	3,106.5	-531.9	510.7	737.4	0.35	-0.34	-0.23
3,308.0	19.30	140.20	3,189.4	-554.3	529.9	766.8	0.83	-0.57	1.82
3,395.0	17.20	134.50	3,272.0	-574.3	548.3	794.0	3.17	-2.41	-6.55
3,482.0	16.80	134.50	3,355.2	-592.2	566.4	819.4	0.46	-0.46	0.00
3,570.0	17.30	136.50	3,439.3	-610.6	584.5	845.2	0.88	0.57	2.27
3,657.0	17.60	139.30	3,522.3	-629.9	602.0	871.3	1.02	0.34	3.22
3,744.0	18.00	142.10	3,605.2	-650.5	618.8	897.7	1.09	0.46	3.22
3,832.0	18.90	140.50	3,688.6	-672.2	636.2	925.4	1.17	1.02	-1.82
3,919.0	19.30	139.80	3,770.9	-694.1	654.5	953.8	0.53	0.46	-0.80
4,006.0	18.40	138.80	3,853.2	-715.4	672.8	981.9	1.10	-1.03	-1.15
4,093.0	18.60	137.70	3,935.7	-736.0	691.2	1,009.4	0.46	0.23	-1.26
4,181.0	18.60	137.20	4,019.1	-756.7	710.2	1,037.5	0.18	0.00	-0.57
4,268.0	18.30	134.40	4,101.6	-776.4	729.3	1,065.0	1.08	-0.34	-3.22
4,355.0	16.30	135.40	4,184.7	-794.7	747.7	1,090.9	2.32	-2.30	1.15
4,443.0	14.10	135.70	4,269.6	-811.1	763.8	1,114.0	2.50	-2.50	0.34
4,530.0	12.50	137.00	4,354.3	-825.6	777.7	1,134.0	1.87	-1.84	1.49
4,617.0	11.10	137.90	4,439.4	-838.7	789.7	1,151.8	1.62	-1.61	1.03
4,705.0	10.30	139.60	4,525.9	-851.0	800.5	1,168.1	0.98	-0.91	1.93
4,792.0	9.30	141.60	4,611.6	-862.4	809.9	1,182.8	1.21	-1.15	2.30
4,879.0	8.20	142.80	4,697.6	-872.9	818.0	1,196.0	1.28	-1.26	1.38
4,966.0	6.60	137.90	4,783.9	-881.5	825.1	1,207.1	1.98	-1.84	-5.63
5,054.0	6.00	138.20	4,871.4	-888.7	831.6	1,216.8	0.68	-0.68	0.34
5,141.0	5.40	138.80	4,957.9	-895.2	837.3	1,225.4	0.69	-0.69	0.69
5,190.0	5.12	138.31	5,006.7	-898.5	840.3	1,229.9	0.58	-0.58	-0.99
DRILL TARGET BHL 2575'FNL & 2543'FWL									
5,193.0	5.10	138.28	5,009.7	-898.7	840.4	1,230.1	0.58	-0.57	-1.05
PERMIT TARGET BHL 2600'FNL & 2569'FWL									
5,228.0	4.90	137.90	5,044.6	-901.0	842.5	1,233.2	0.58	-0.57	-1.09
5,316.0	4.40	135.00	5,132.3	-906.2	847.4	1,240.3	0.63	-0.57	-3.30
5,403.0	3.20	136.30	5,219.1	-910.3	851.4	1,246.1	1.38	-1.38	1.49

Company:	EnCana Oil & Gas Weld County CO	Local Co-ordinate Reference:	Well Elmquist 4-4-23
Project:	SEC.23-T2N-R68W	TVD Reference:	WELL @ 4930.0ft (Original Well Elev)
Site:	Elmquist 2-4-23 Pad Sec.23-T2N-R68W	MD Reference:	WELL @ 4930.0ft (Original Well Elev)
Well:	Elmquist 4-4-23	North Reference:	True
Wellbore:	Wellbore #1	Survey Calculation Method:	Minimum Curvature
Design:	Wellbore #1	Database:	Landmark

Survey

Measured Depth (ft)	Inclination (°)	Azimuth (°)	Vertical Depth (ft)	+N/-S (ft)	+E/-W (ft)	Vertical Section (ft)	Dogleg Rate (°/100ft)	Build Rate (°/100ft)	Turn Rate (°/100ft)
5,490.0	2.00	150.70	5,306.0	-913.4	853.8	1,250.0	1.56	-1.38	16.55
5,665.0	0.30	339.00	5,481.0	-915.6	855.2	1,252.5	1.31	-0.97	-98.11
5,839.0	0.40	327.90	5,655.0	-914.7	854.7	1,251.5	0.07	0.06	-6.38
6,014.0	0.60	324.40	5,830.0	-913.4	853.8	1,250.0	0.12	0.11	-2.00
6,189.0	0.80	298.70	6,004.9	-912.1	852.2	1,247.9	0.21	0.11	-14.69
6,363.0	0.60	299.60	6,178.9	-911.0	850.4	1,245.9	0.12	-0.11	0.52
6,538.0	0.50	282.70	6,353.9	-910.4	848.8	1,244.4	0.11	-0.06	-9.66
6,712.0	0.40	304.20	6,527.9	-909.9	847.6	1,243.1	0.11	-0.06	12.36
6,887.0	0.20	305.40	6,702.9	-909.4	846.8	1,242.2	0.11	-0.11	0.69
7,062.0	0.20	278.30	6,877.9	-909.2	846.3	1,241.7	0.05	0.00	-15.49
7,236.0	0.30	320.70	7,051.9	-908.8	845.7	1,241.0	0.12	0.06	24.37
7,411.0	0.20	336.90	7,226.9	-908.1	845.3	1,240.3	0.07	-0.06	9.26
7,585.0	0.20	320.20	7,400.9	-907.6	845.0	1,239.7	0.03	0.00	-9.60
7,760.0	0.30	25.40	7,575.9	-907.0	845.0	1,239.2	0.16	0.06	37.26
7,935.0	0.40	278.70	7,750.9	-906.5	844.6	1,238.6	0.32	0.06	-60.97
8,109.0	0.40	256.50	7,924.9	-906.5	843.4	1,237.8	0.09	0.00	-12.76
8,220.0	0.40	235.80	8,035.9	-906.8	842.7	1,237.5	0.13	0.00	-18.65
8,268.7	0.40	235.80	8,084.6	-907.0	842.4	1,237.4	0.00	0.00	0.00
HARDLINES 75'S & 75'E OF DRILL TARGET BHL									
8,270.0	0.40	235.80	8,085.9	-907.0	842.4	1,237.4	0.00	0.00	0.00

Checked By: _____ Approved By: _____ Date: _____