



CEMENT BOND LOG

Company	ENCANA OIL & GAS (USA) INC
Well	ELMQUIST 2-4-23
Field	WATTENBERG
County	WELD
State	COLORADO
Location:	APL # : 05-123-31977-0000
SEC: 23 TWP: 2N RGE: 68W	Other Services NONE
SHL: 23-2N-68W6M BHL: 23-2N-68W6M	
Permanent Datum	GROUND LEVEL Elevation 4917'
Log Measured From	KELLY BUSHING = 13'
Drilling Measured From	KELLY BUSHING
Elevation	K.B. 4930' D.F. 4931' G.L. 4917'

Date	05 JANUARY 2012		
Run Number	ONE		
Depth Driller	8195'		
Depth Logger	8147'		
Bottom Logged Interval	8147'		
Top Log Interval	3800'		
Open Hole Size	7.875"		
Type Fluid	WATER		
Density / Viscosity	~8.3#		
Max. Recorded Temp.	251 DEG F		
Estimated Cement Top	4032'		
Time Well Ready	N/A		
Time Logger on Bottom	N/A		
Equipment Number	10901 PRD 01		
Location	AULT, CO		
Recorded By	V.FULLER		
Witnessed By	G.CUMMINGS		
Borehole Record			
Run Number	Bit	From	To
ONE	12.25"	0'	795'
TWO	7.875"	795'	8195'
Tubing Record			
Casing Record	Size	Wgt/Ft	Top
Surface String	8.625"	24#	0'
Prot. String			
Production String	4.5"	11.6#	0'
Liner			

<<< Fold Here >>>

All interpretations are opinions based on inferences from electrical or other measurements and we cannot and do not guarantee the accuracy or correctness of any interpretation, and we shall not, except in the case of gross or willful negligence on our part, be liable or responsible for any loss, costs, damages, or expenses incurred or sustained by anyone resulting from any interpretation made by any of our officers, agents or employees. These interpretations are also subject to our general terms and conditions set out in our current Price Schedule.

Comments

LOG NOT CORRELATED TO ANY OTHER LOG
SHORT JOINT 7260'-7283'

WE APPRECIATE YOUR BUSINESS, MESA WIRELINE LLC, GRAND JUNCTION CO. (970) 257-0458



TOP PASS

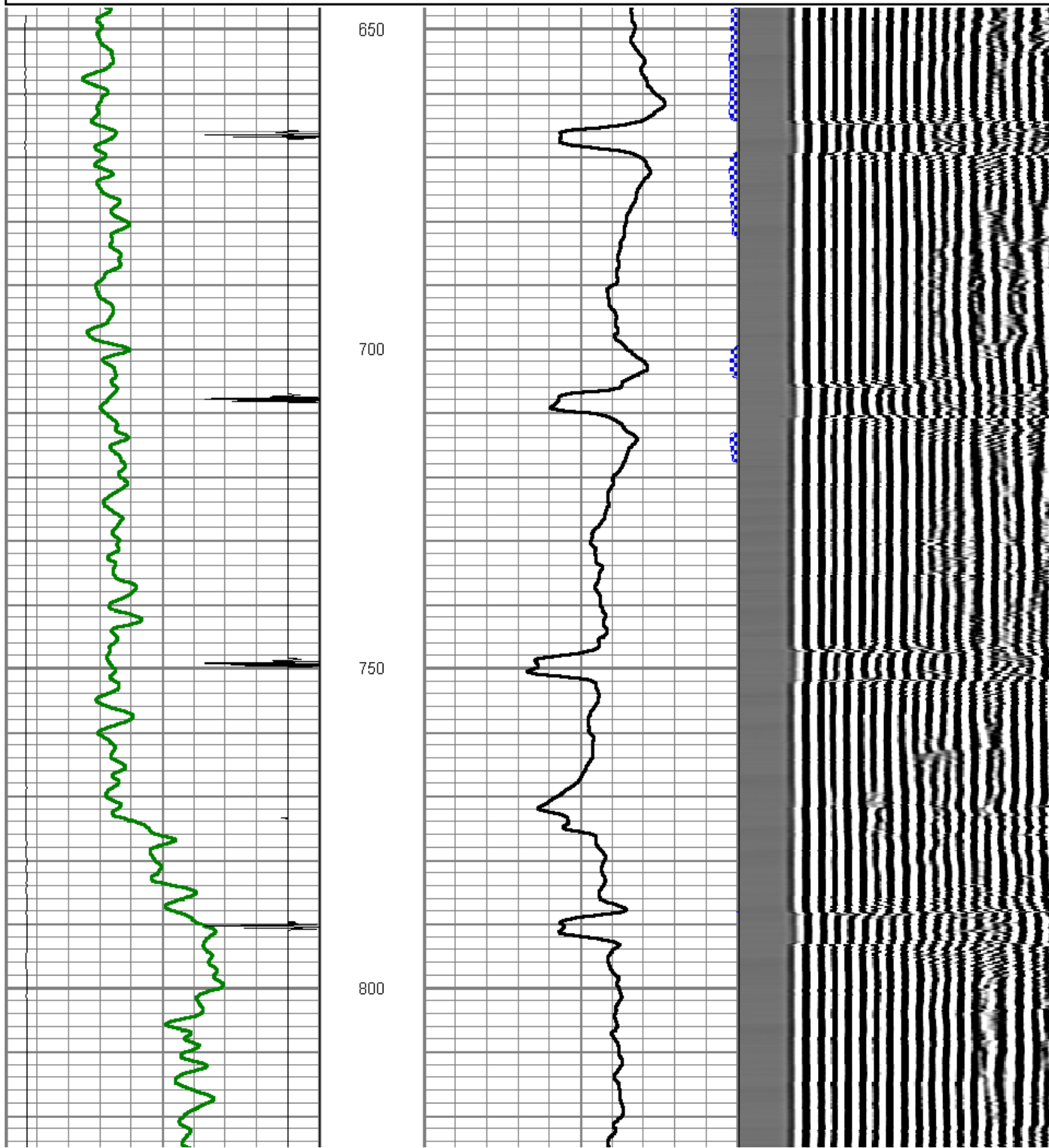
5" = 100'

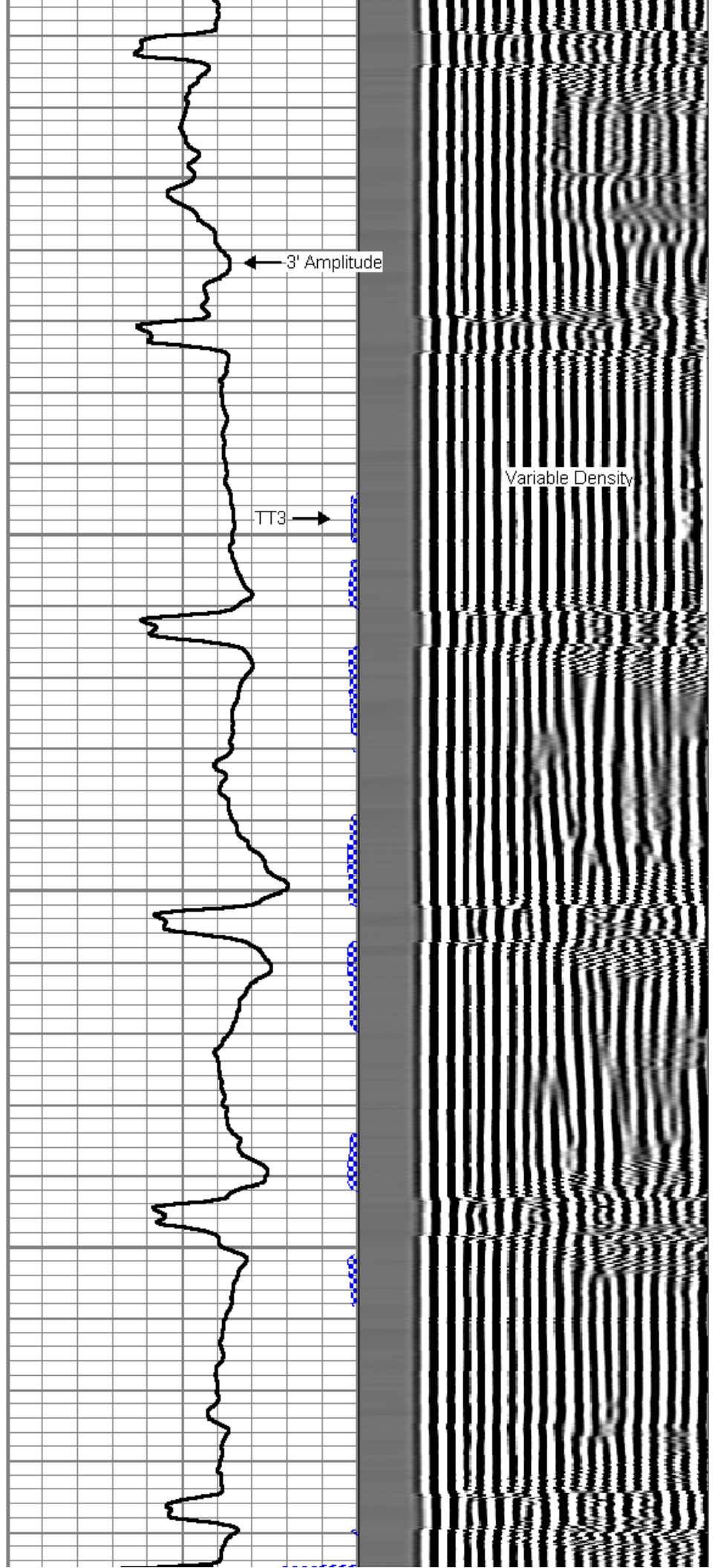
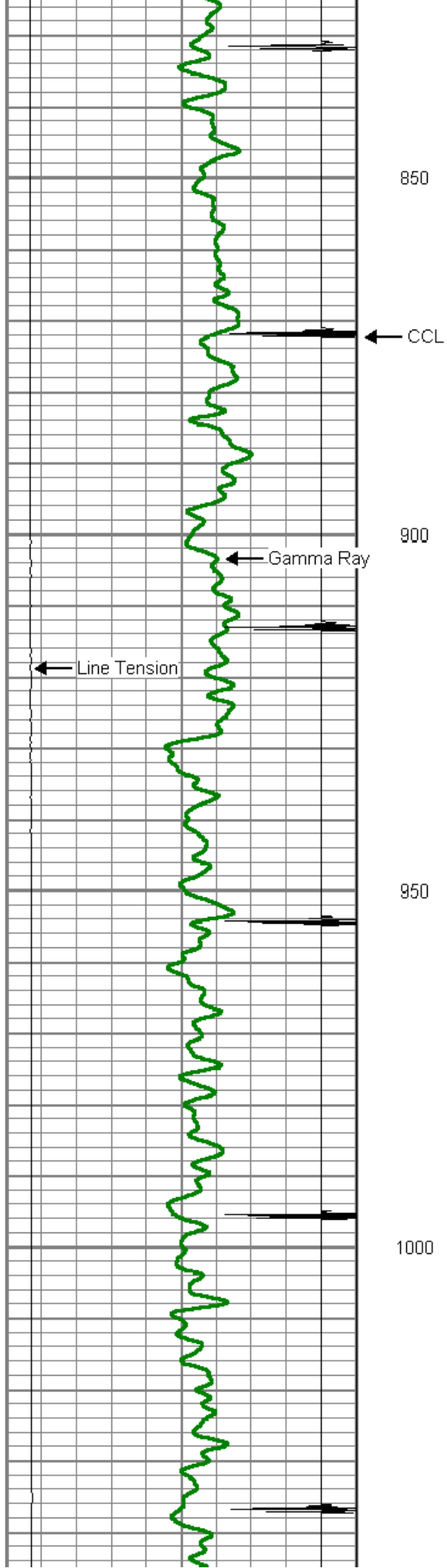
Mesa Wireline

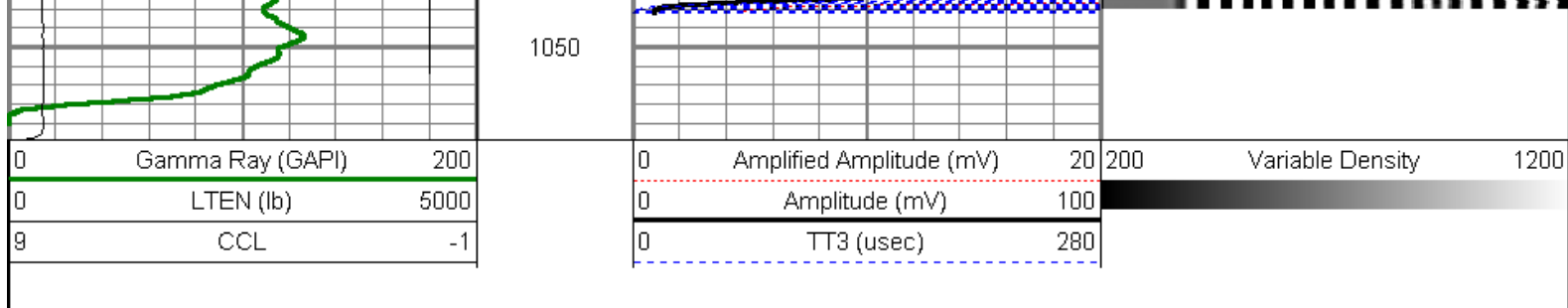
Database File: elmquist2-4-23.db
 Dataset Pathname: pass6
 Presentation Format: dcbl_prb
 Dataset Creation: Thu Jan 05 09:23:49 2012 by Log SCH 110722
 Charted by: Depth in Feet scaled 1:240

0	Gamma Ray (GAPI)	200
0	LTEN (lb)	5000
9	CCL	-1

0	Amplified Amplitude (mV)	20	200	Variable Density	1200
0	Amplitude (mV)	100			
0	TT3 (usec)	280			



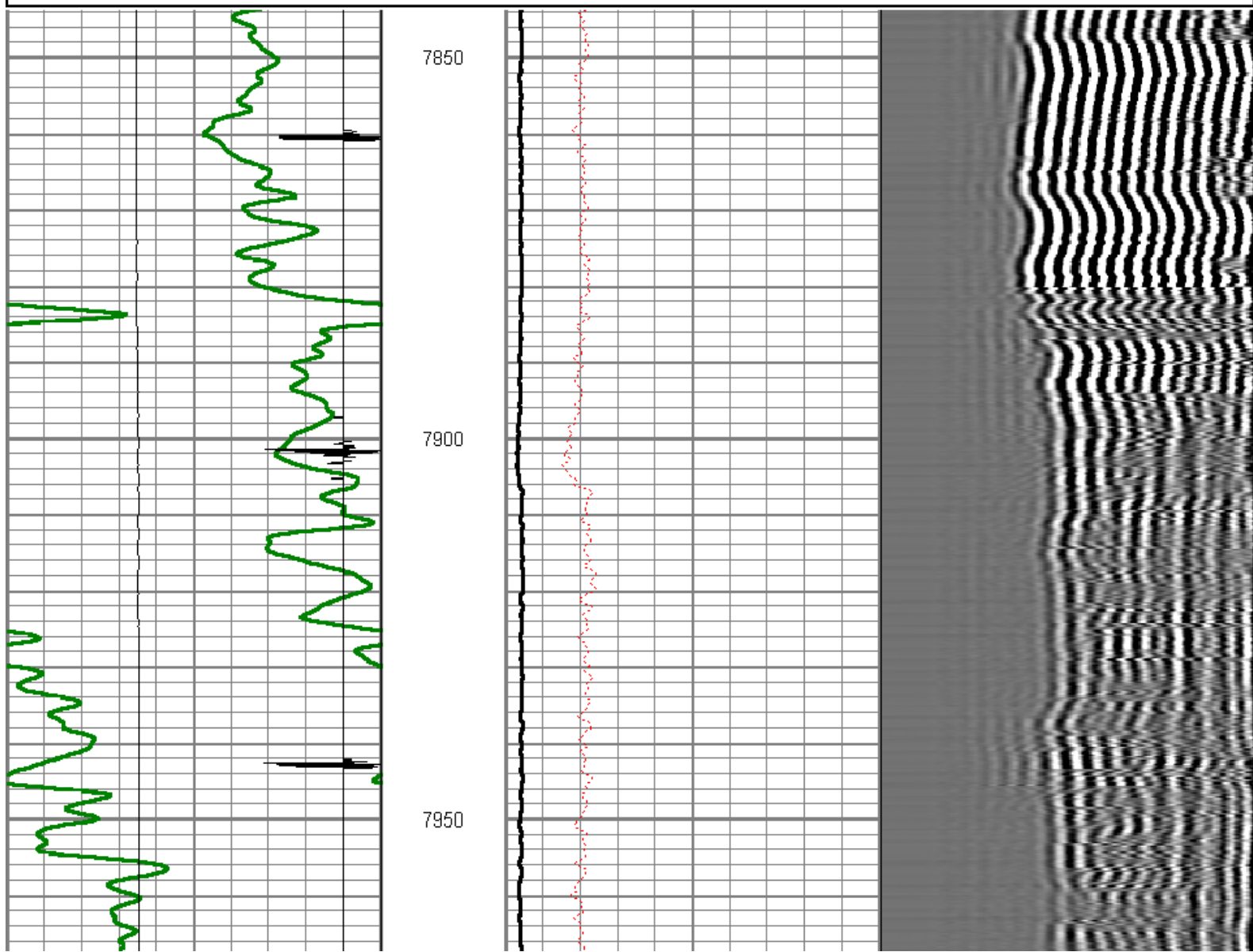
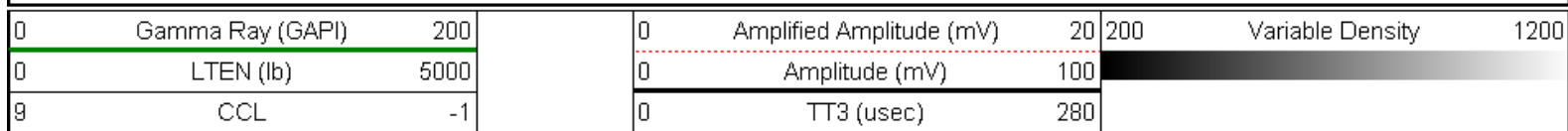


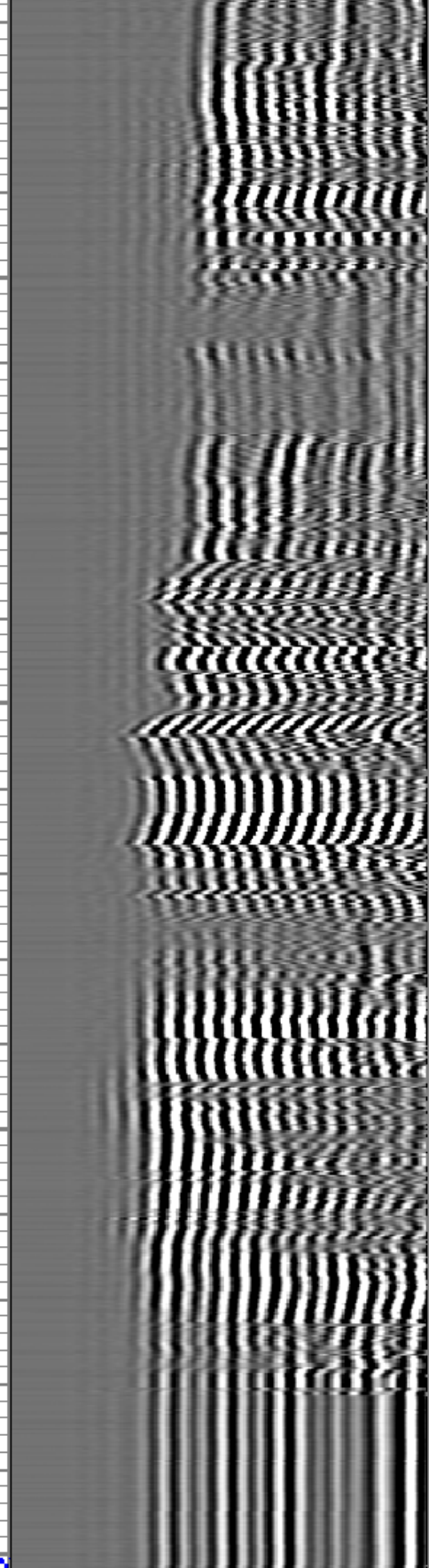
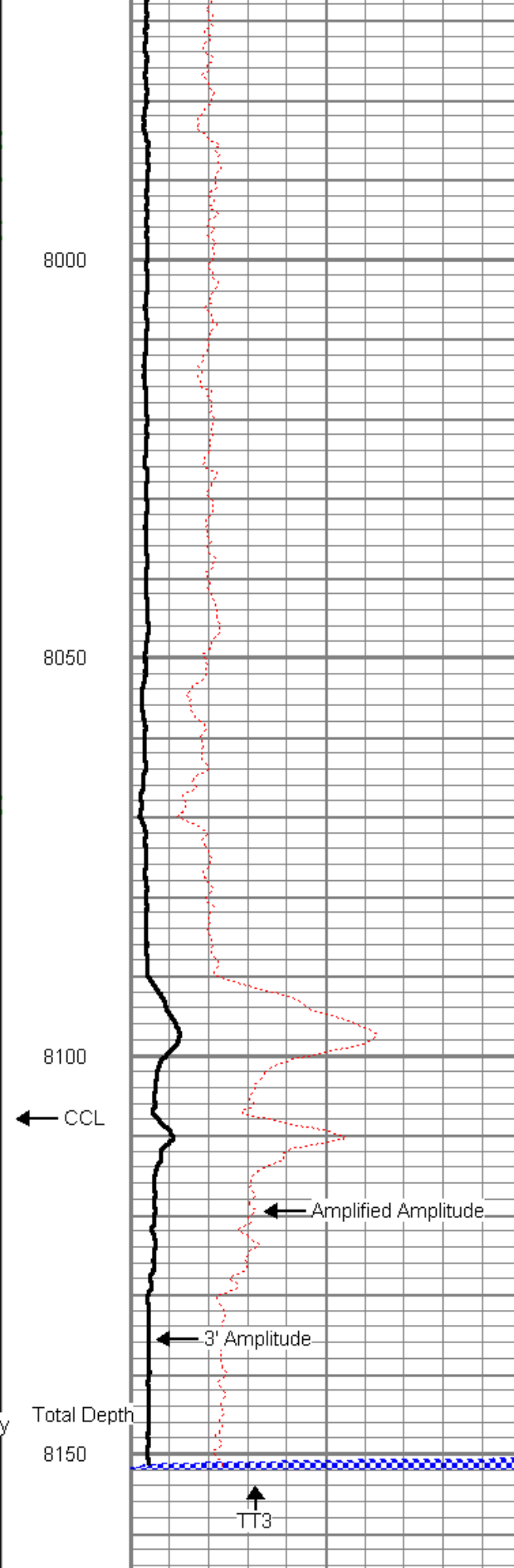
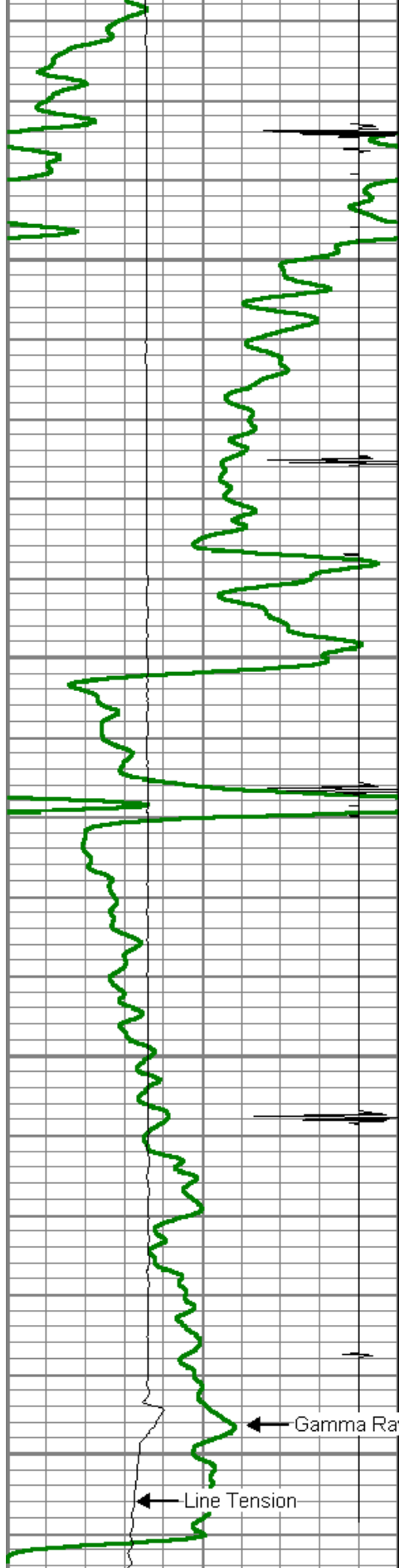


REPEAT PASS

5" = 100'

Database File: elmquist2-4-23.db
 Dataset Pathname: pass3
 Presentation Format: dcbl_prb
 Dataset Creation: Thu Jan 05 07:52:14 2012 by Log SCH 110722
 Charted by: Depth in Feet scaled 1:240





0	Gamma Ray (GAPI)	200
0	LTEN (lb)	5000
9	CCL	-1

0	Amplified Amplitude (mV)	20
0	Amplitude (mV)	100
0	TT3 (usec)	280

200	Variable Density	1200
-----	------------------	------



MAIN PASS

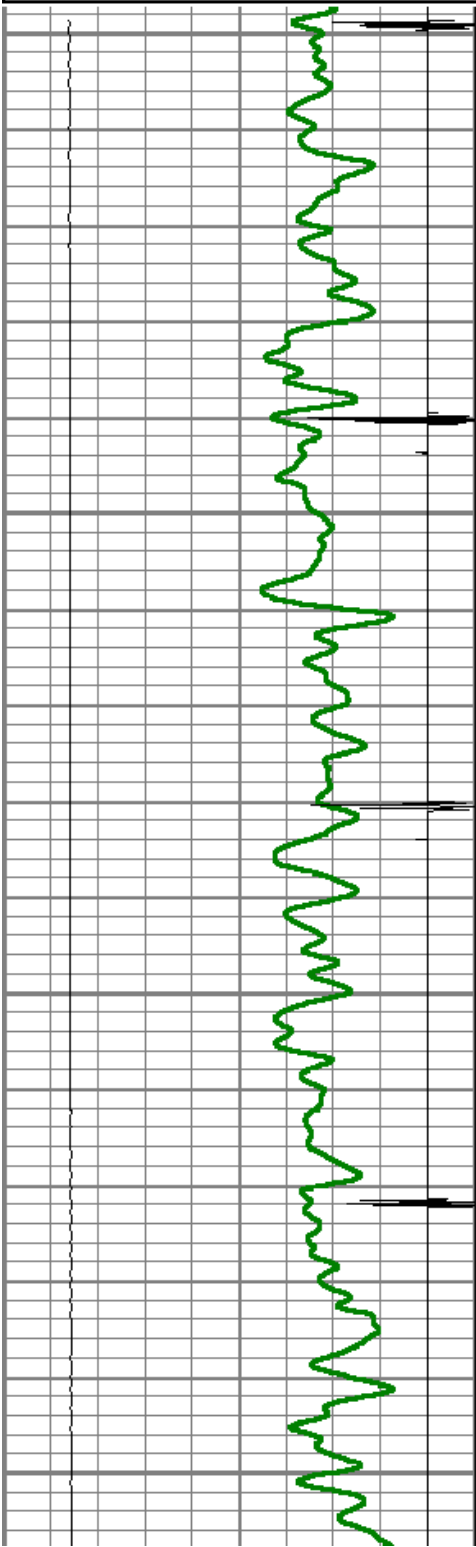
5" = 100'

Database File: elmquist2-4-23.db
Dataset Pathname: pass5
Presentation Format: dcbl_prb
Dataset Creation: Thu Jan 05 08:01:20 2012 by Log SCH 110722
Charted by: Depth in Feet scaled 1:240

0	Gamma Ray (GAPI)	200
0	LTEN (lb)	5000
9	CCL	-1

0	Amplified Amplitude (mV)	20
0	Amplitude (mV)	100
0	TT3 (usec)	280

200	Variable Density	1200
-----	------------------	------

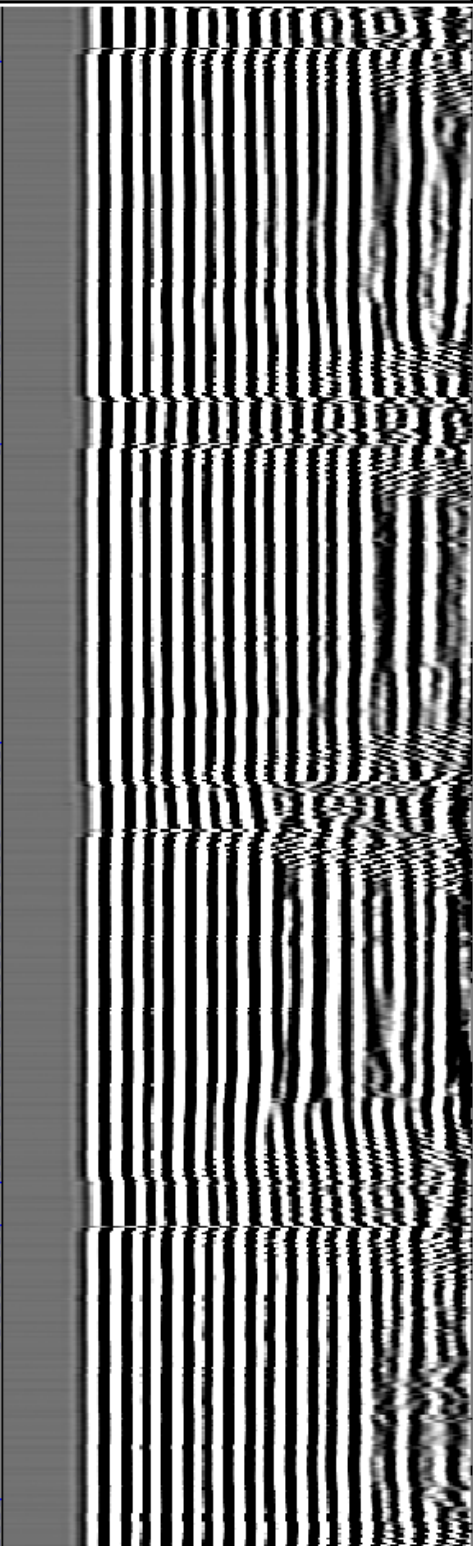
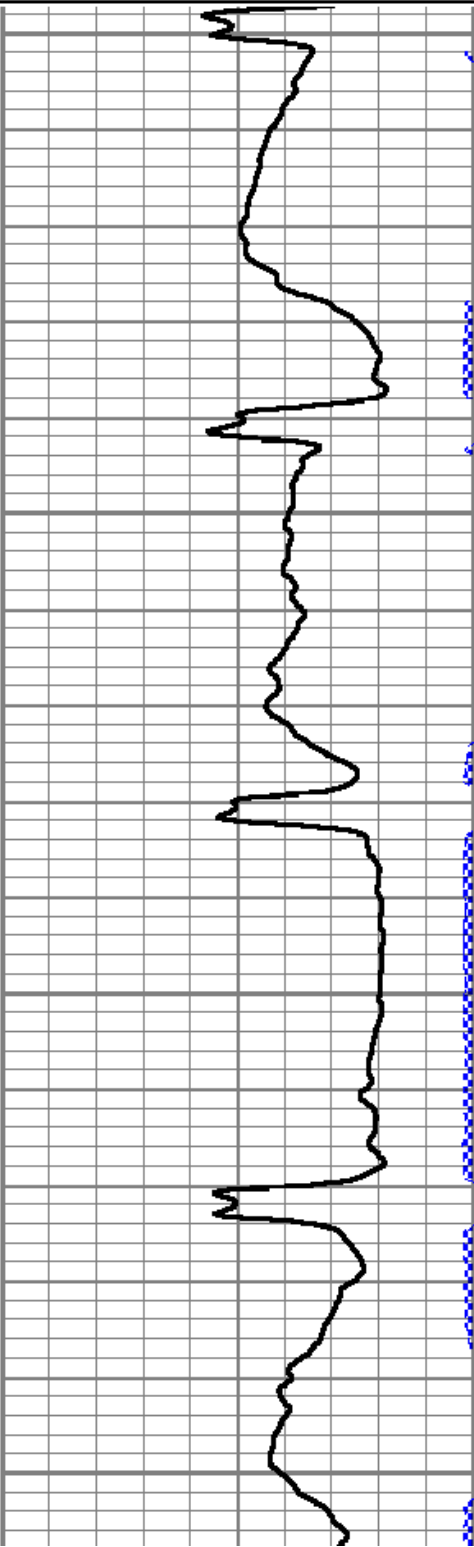


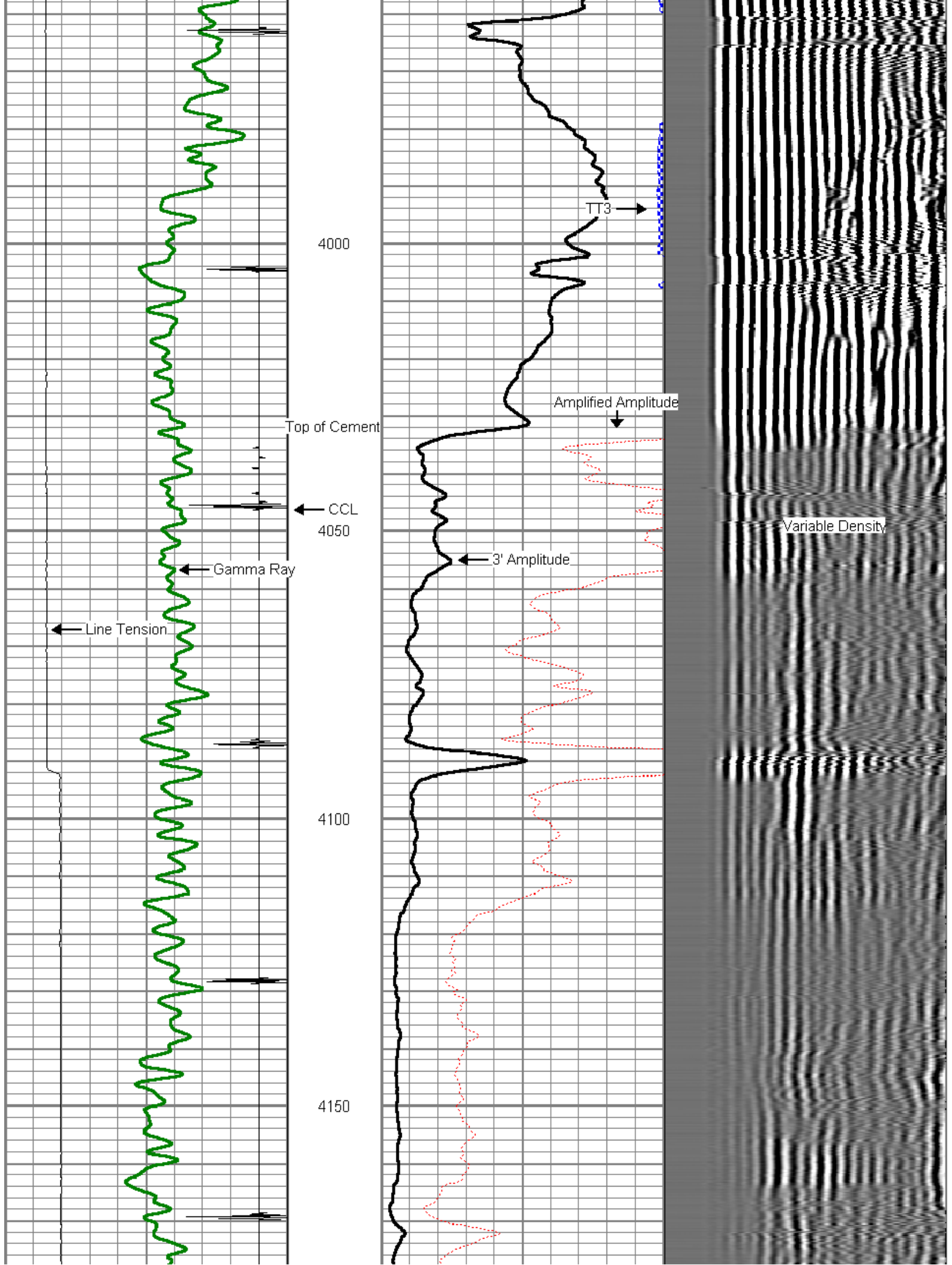
3800

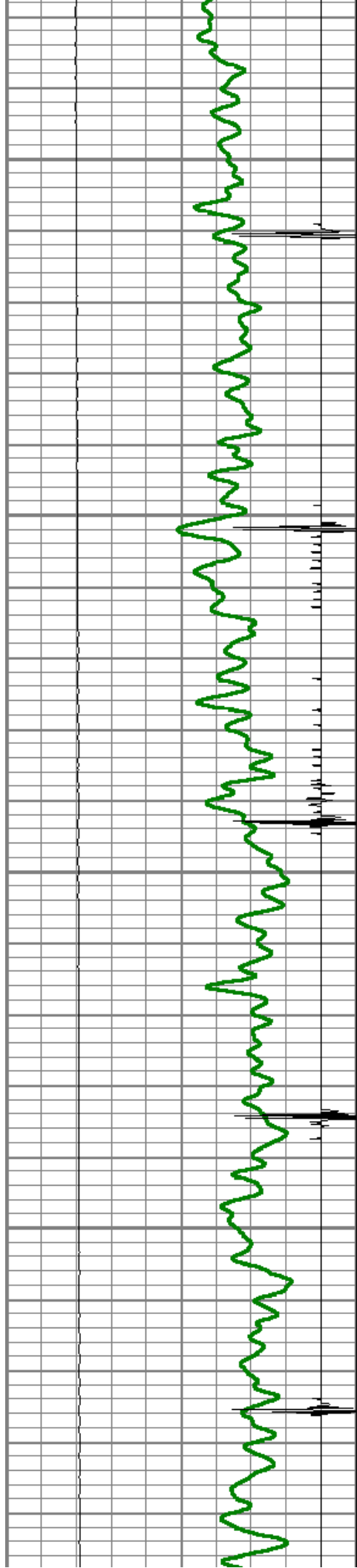
3850

3900

3950





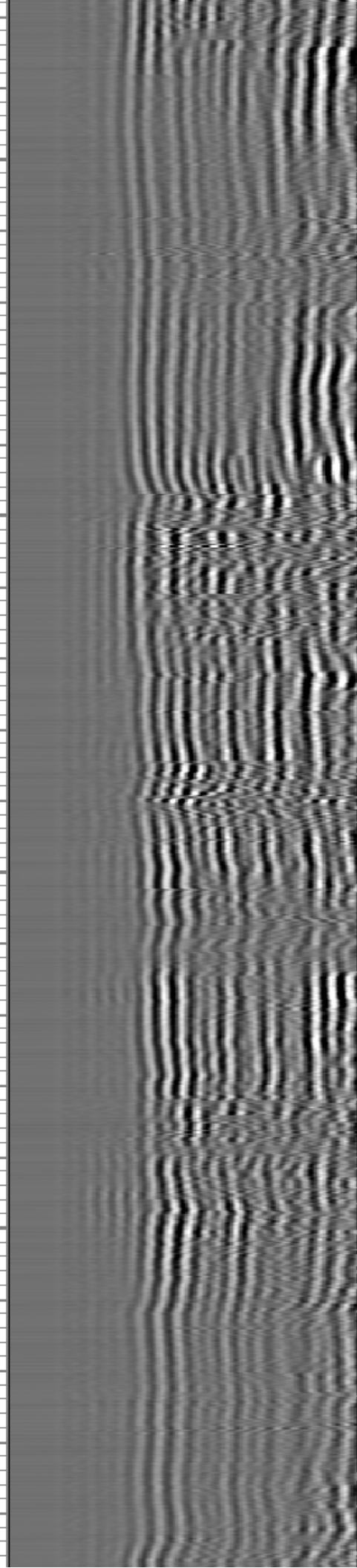
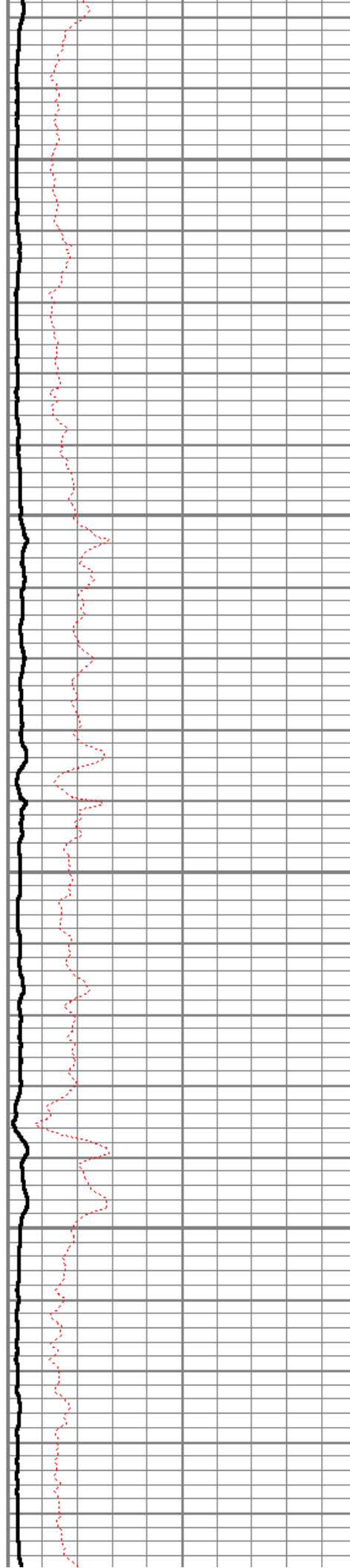


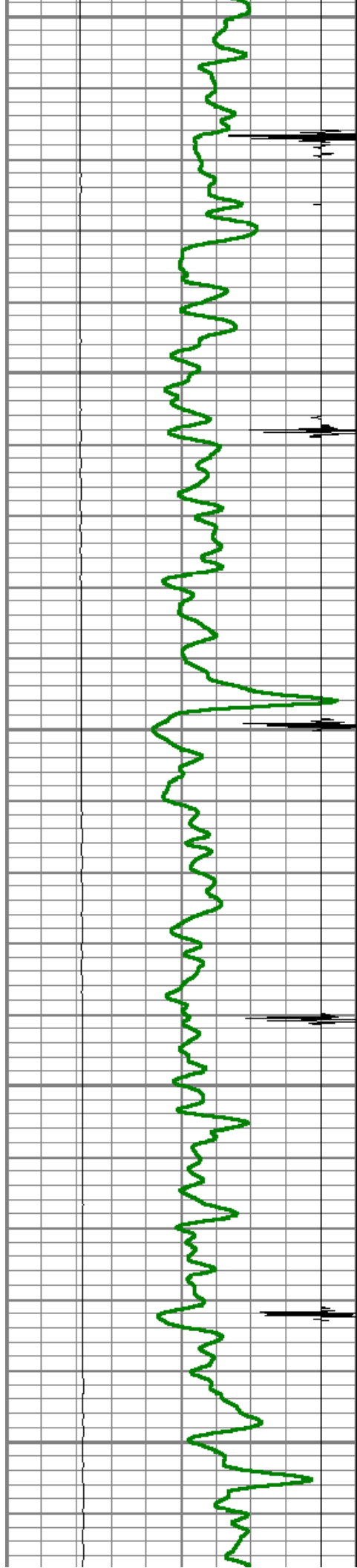
4200

4250

4300

4350





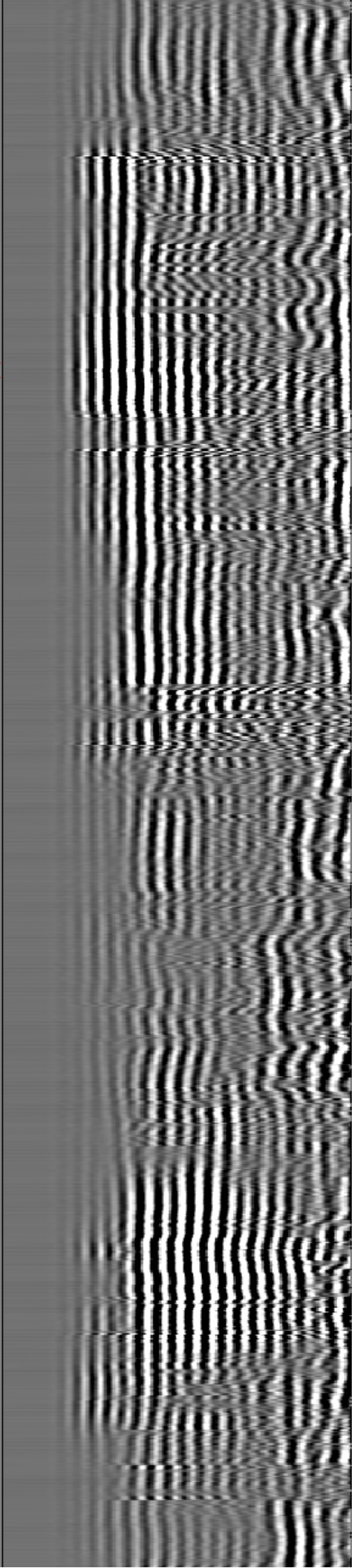
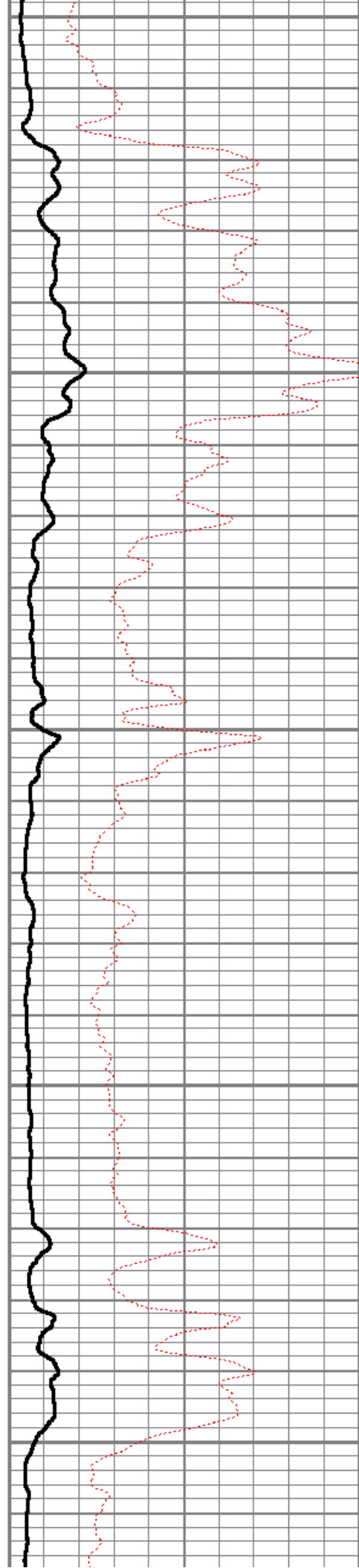
4400

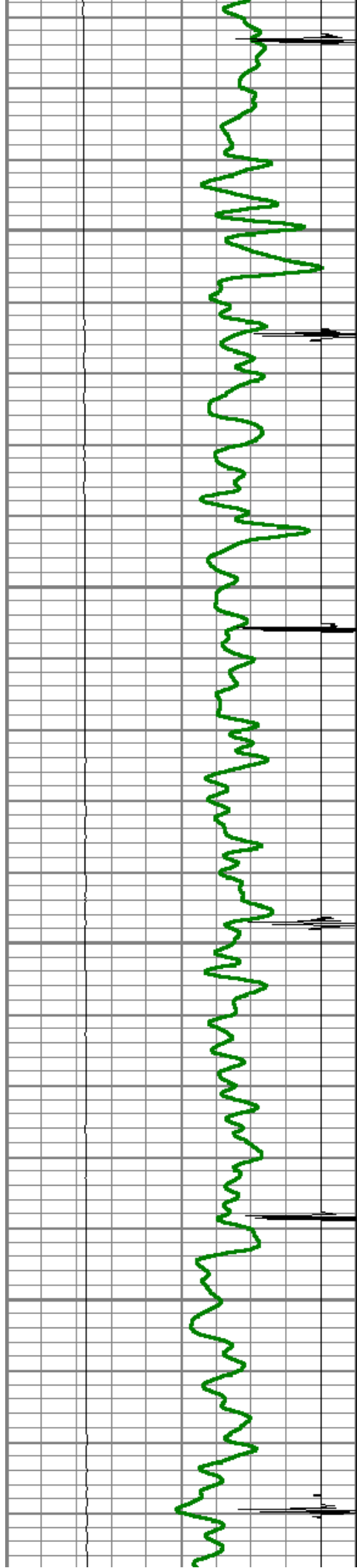
4450

4500

4550

4600



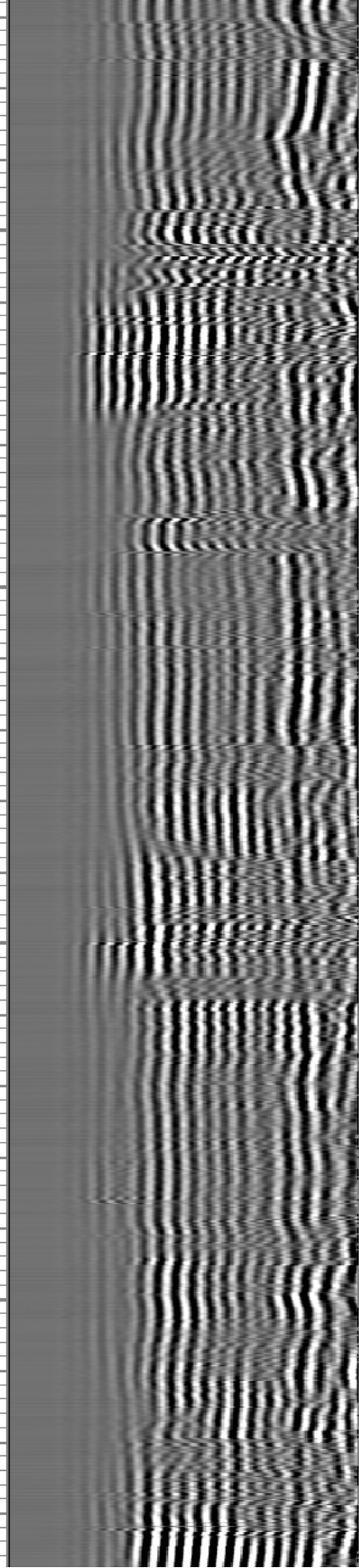
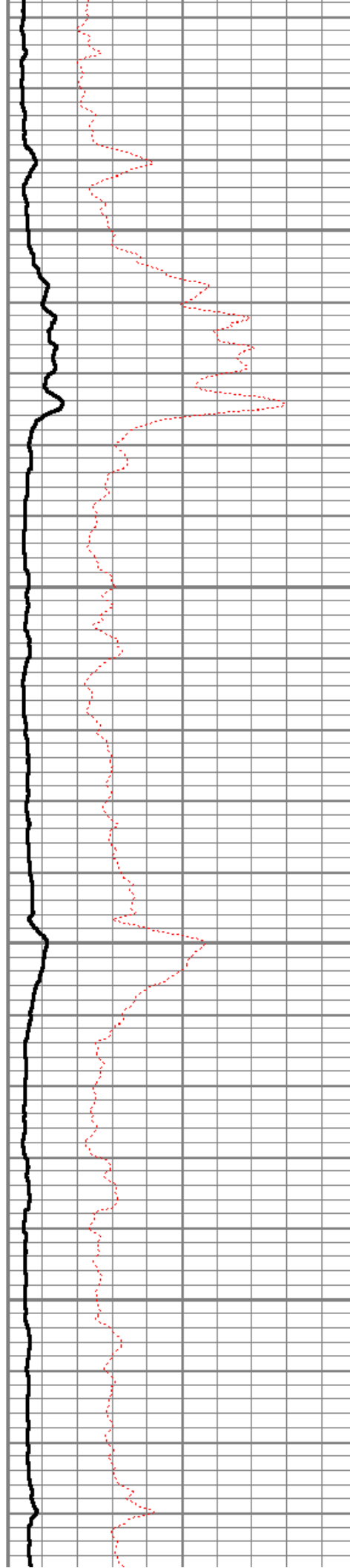


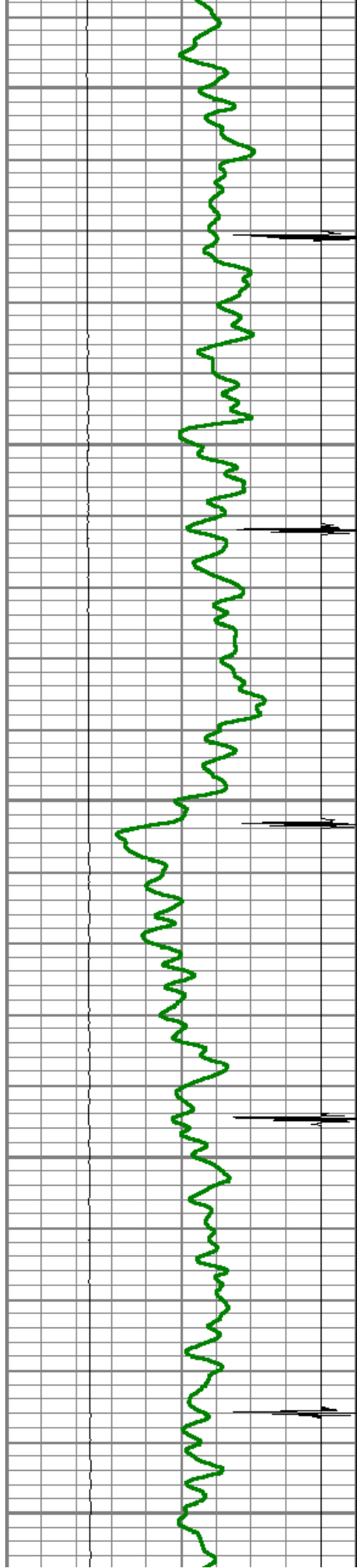
4650

4700

4750

4800





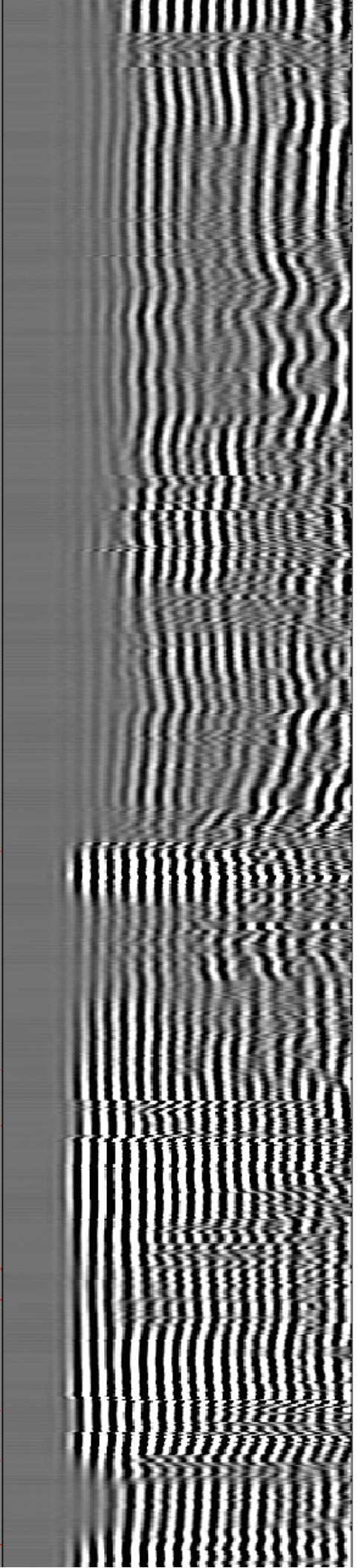
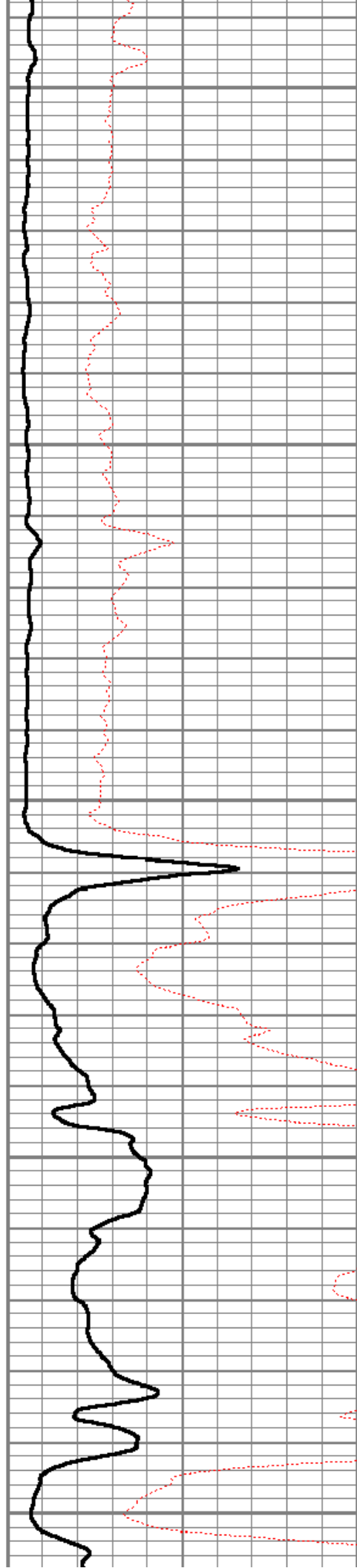
4850

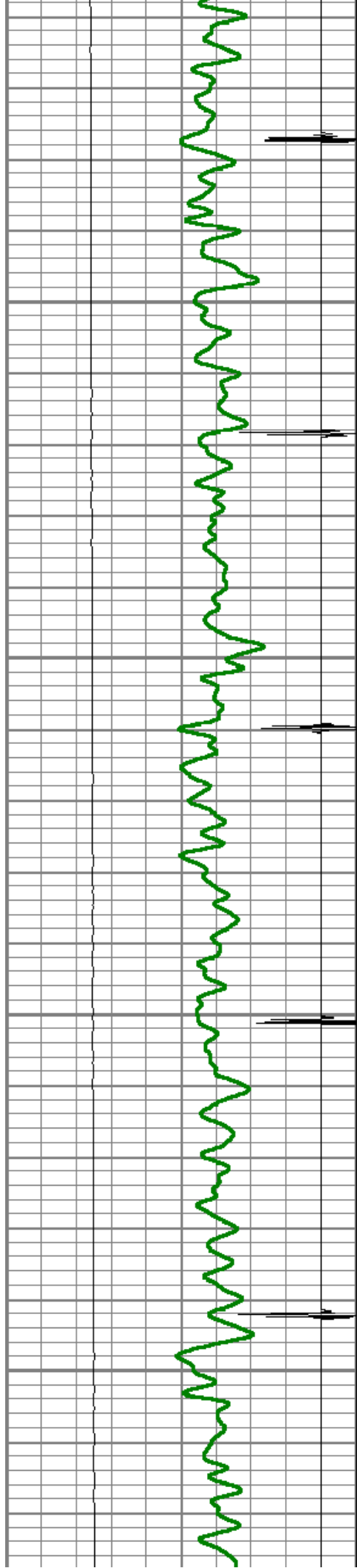
4900

4950

5000

5050



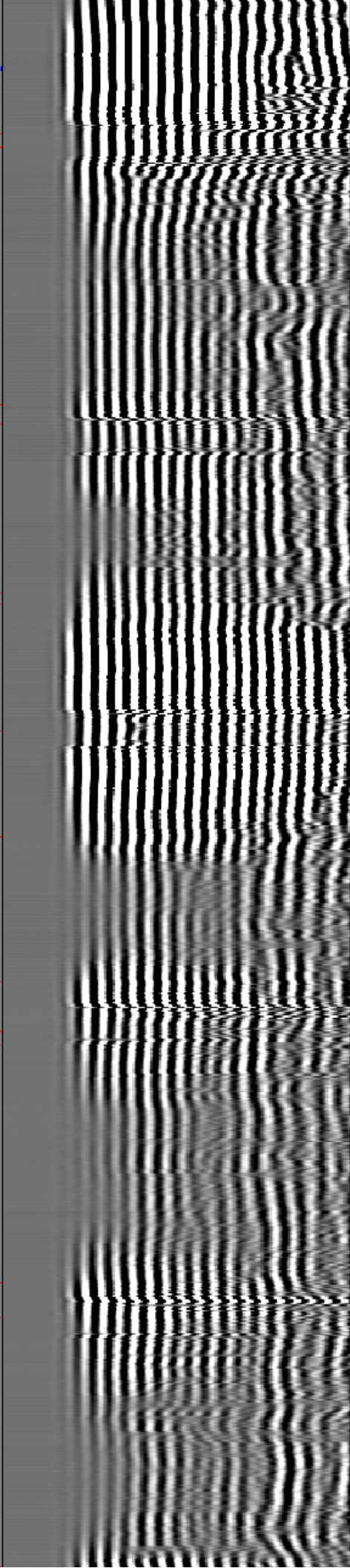
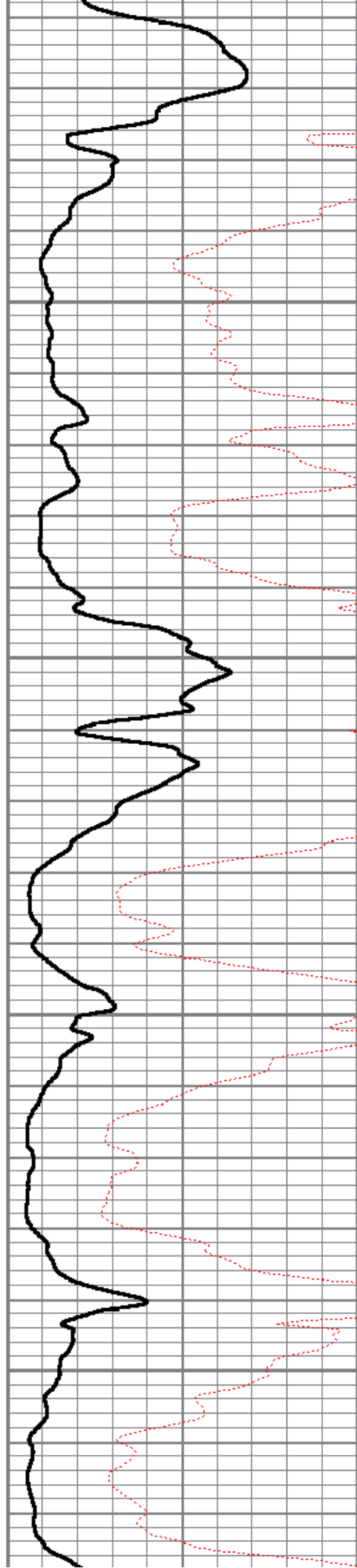


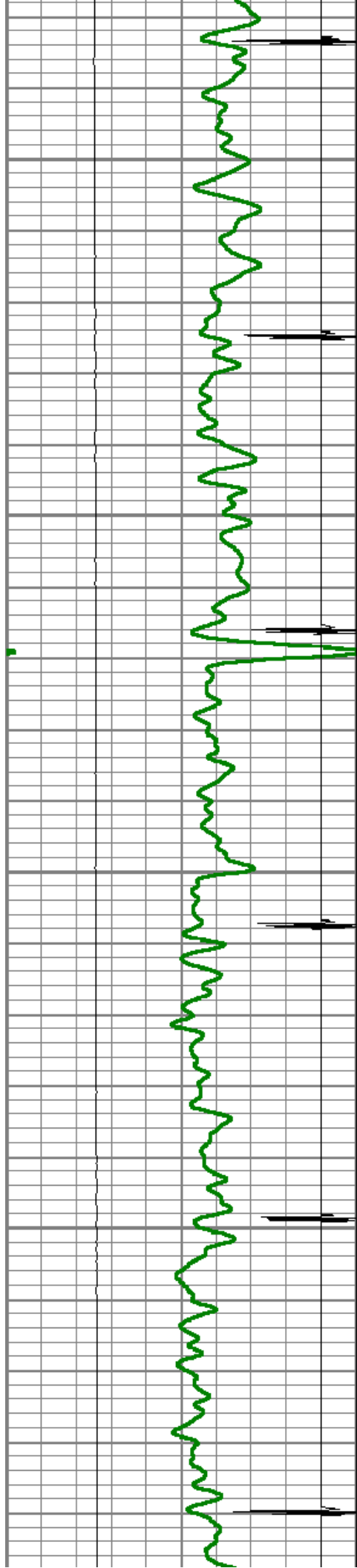
5100

5150

5200

5250



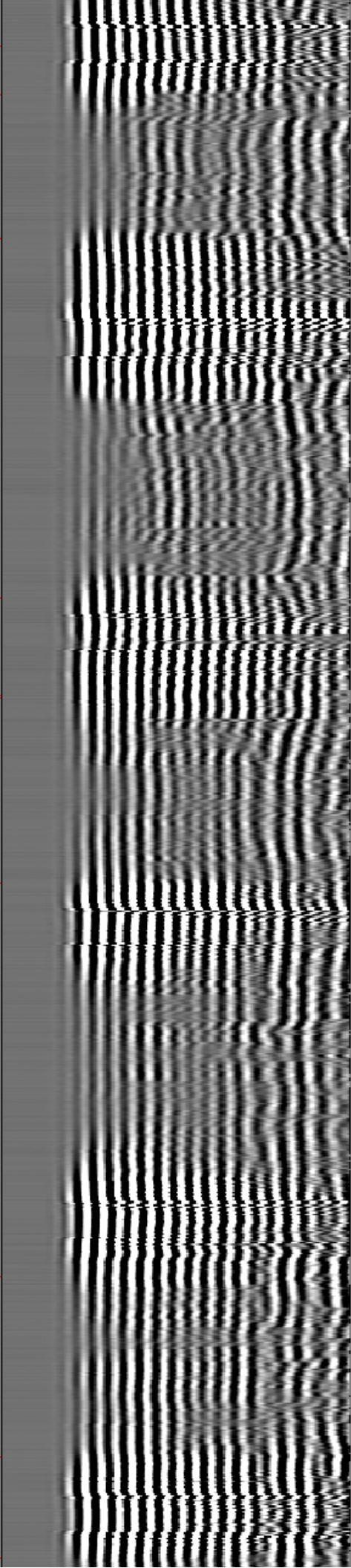
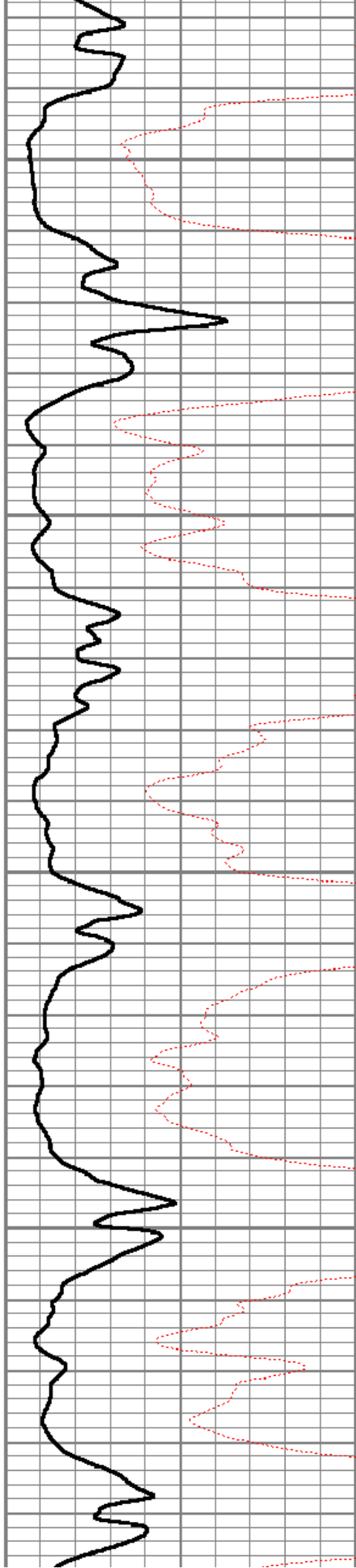


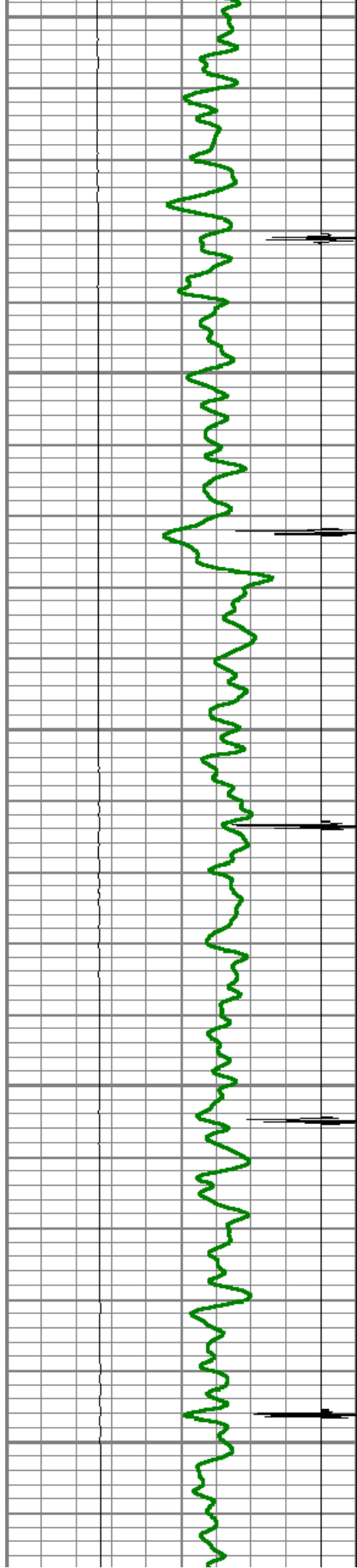
5300

5350

5400

5450





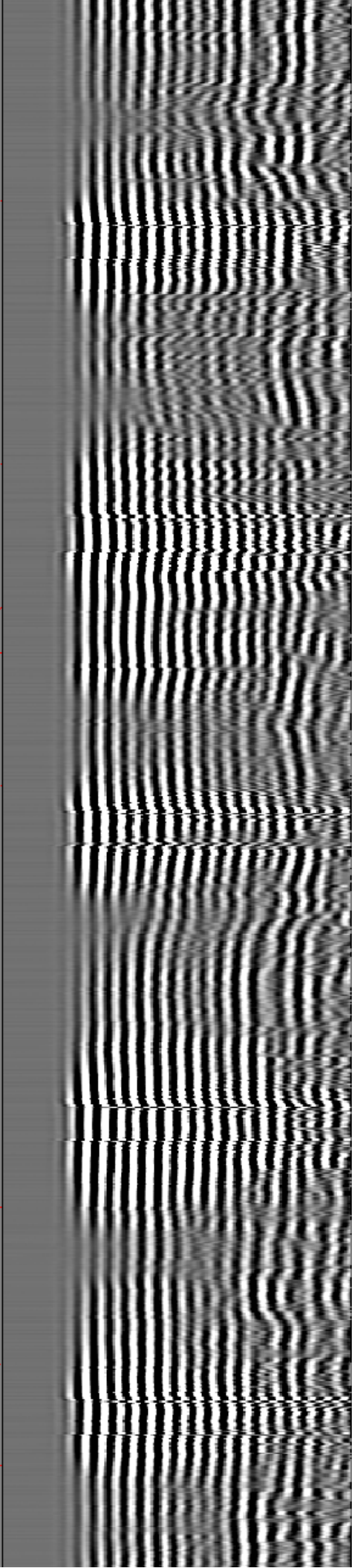
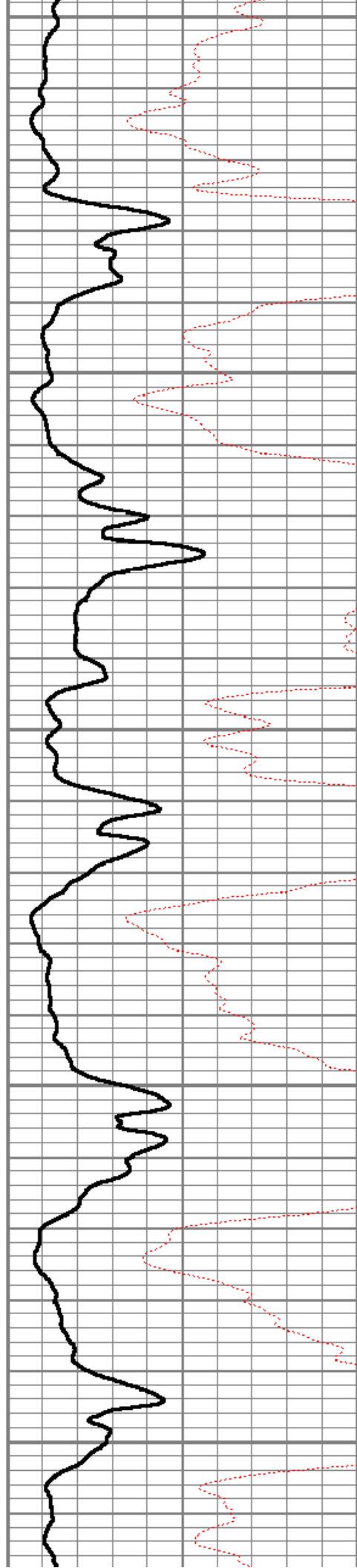
5500

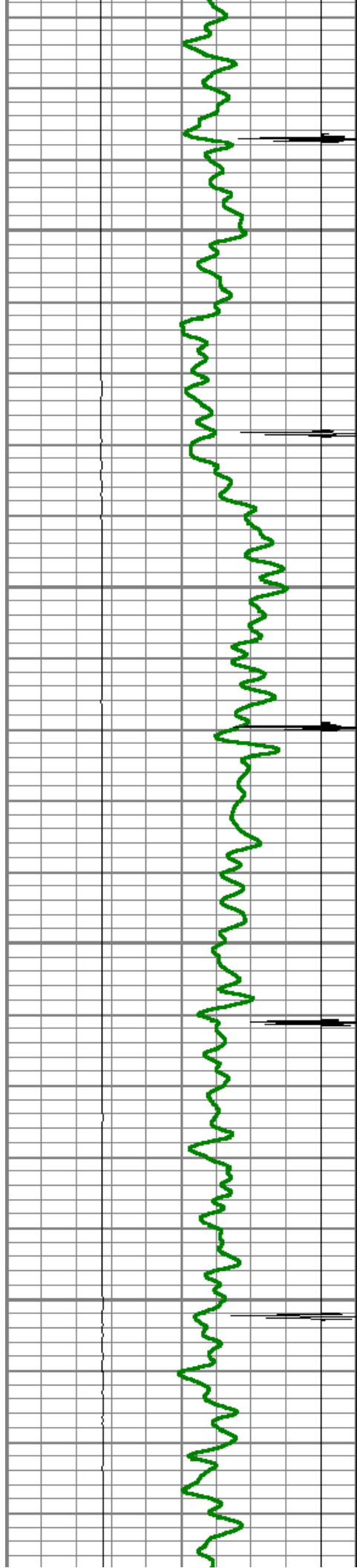
5550

5600

5650

5700



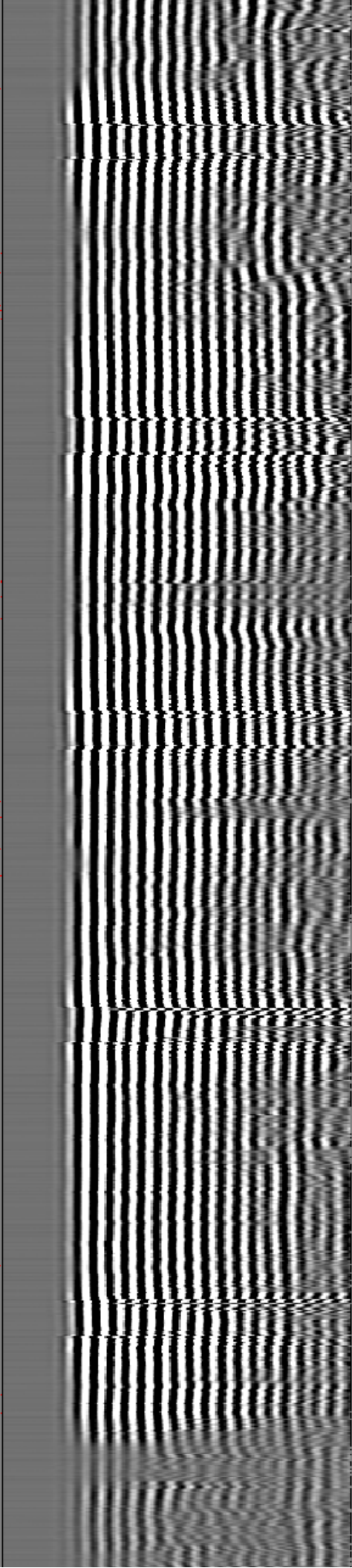
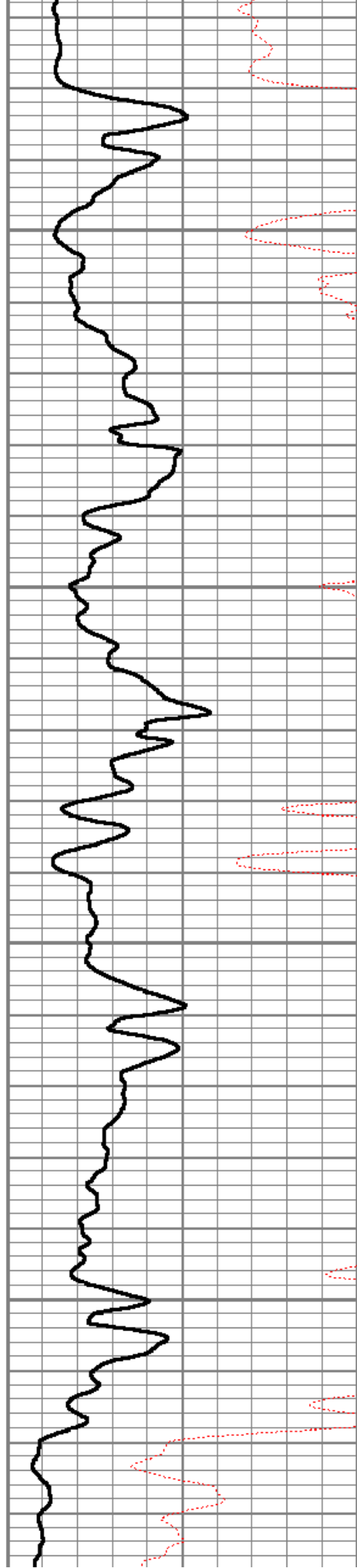


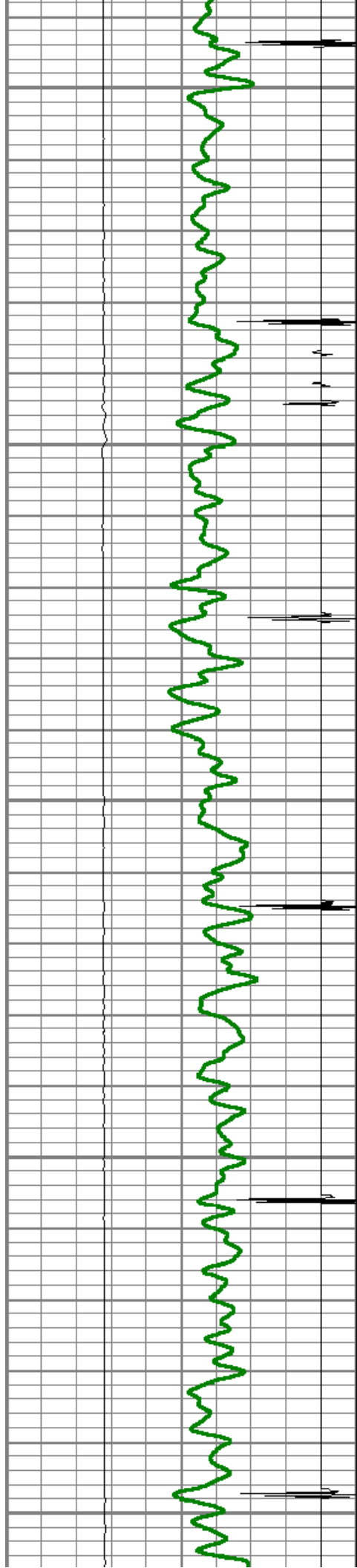
5750

5800

5850

5900





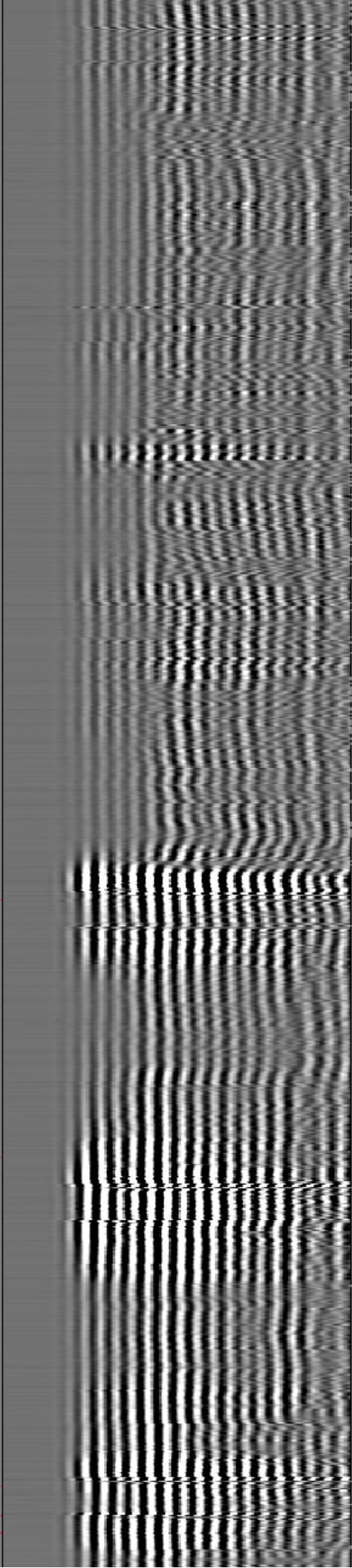
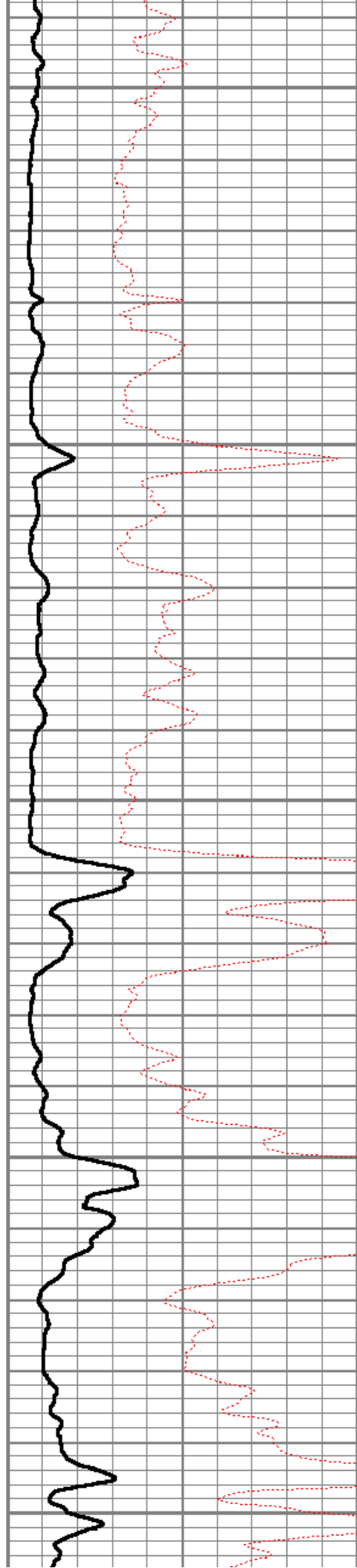
5950

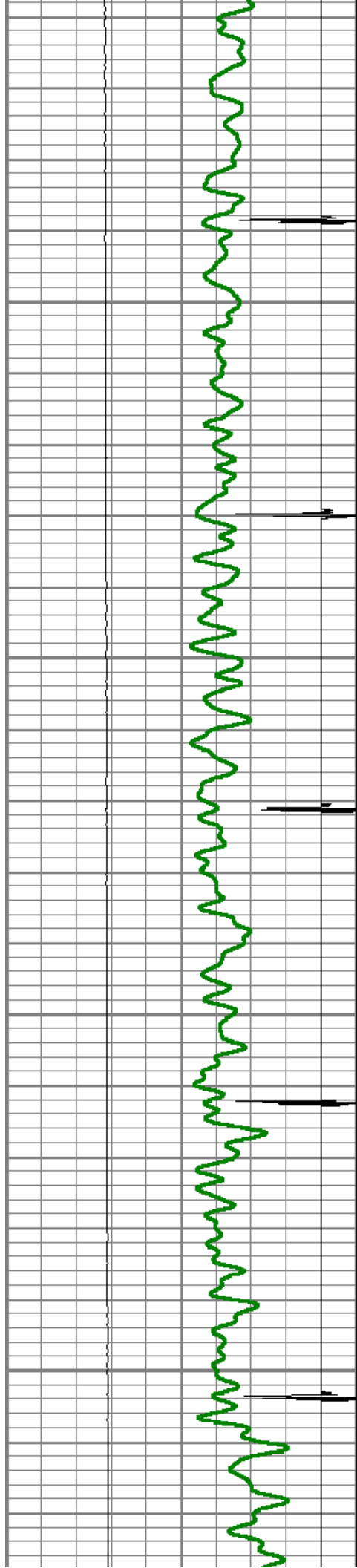
6000

6050

6100

6150



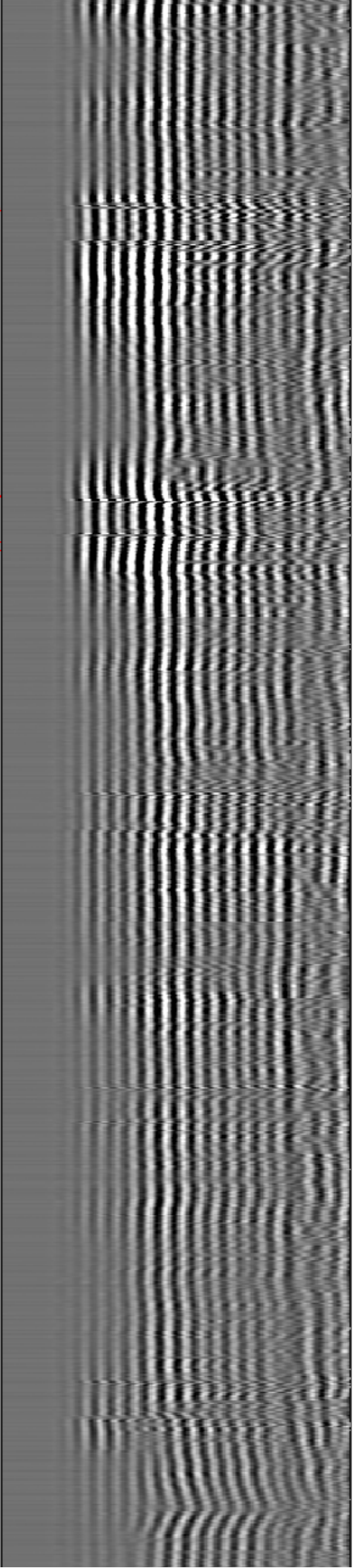
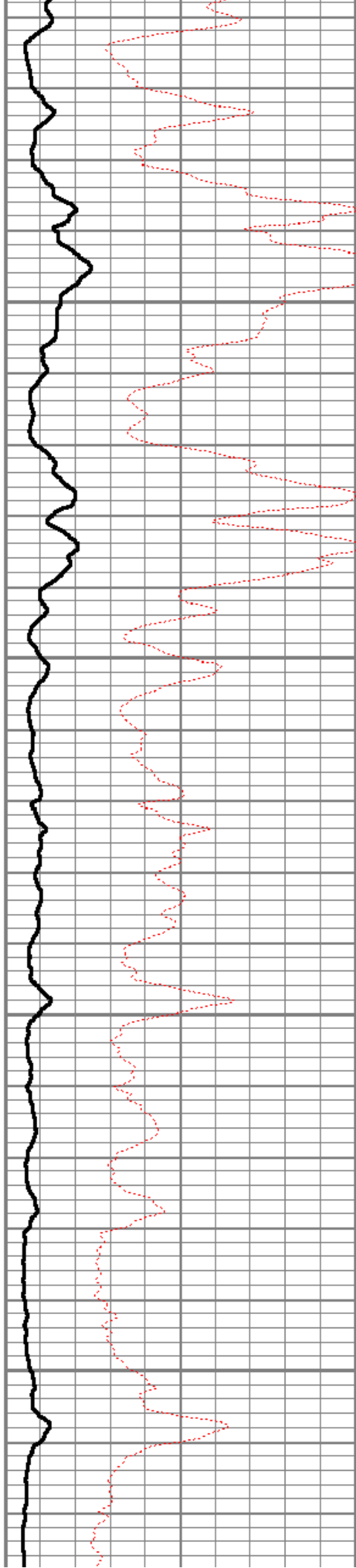


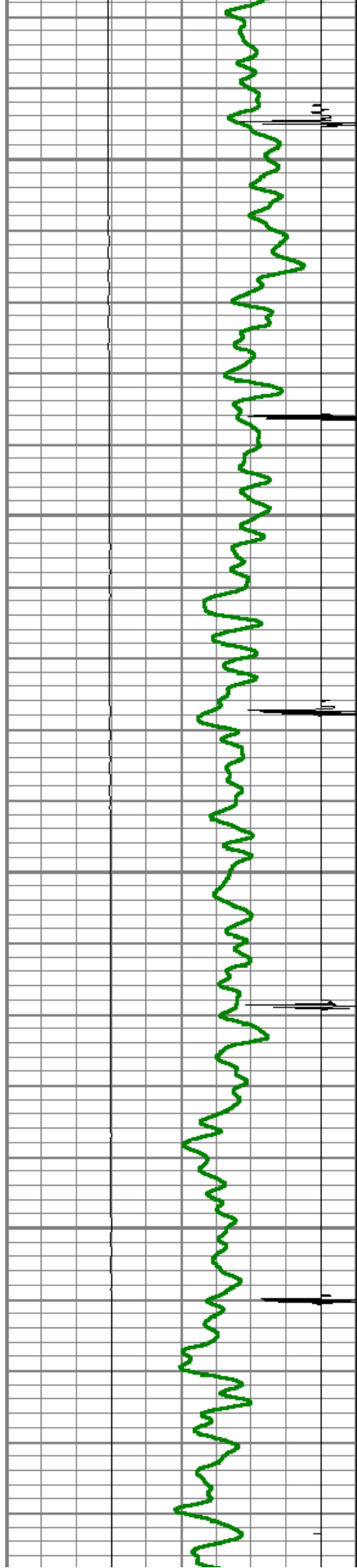
6200

6250

6300

6350



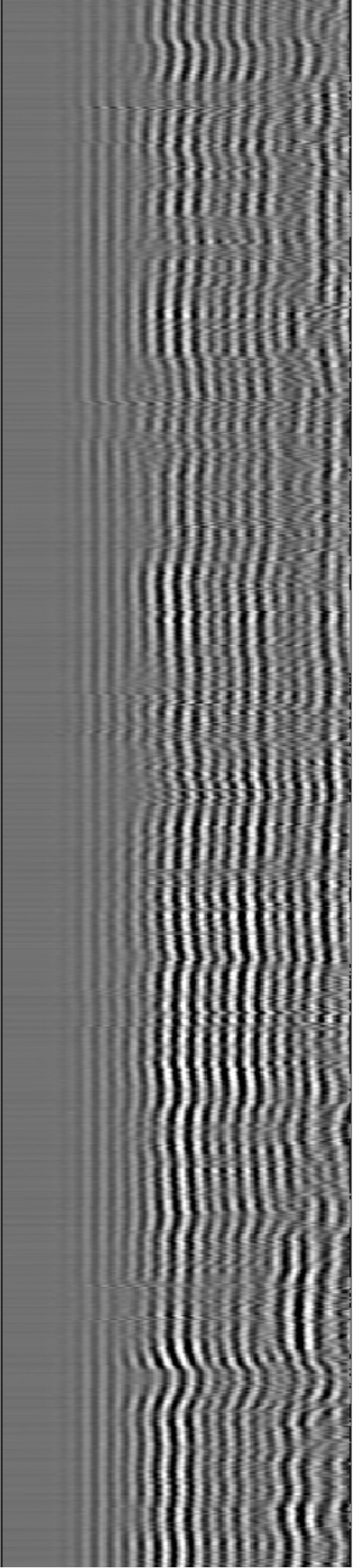
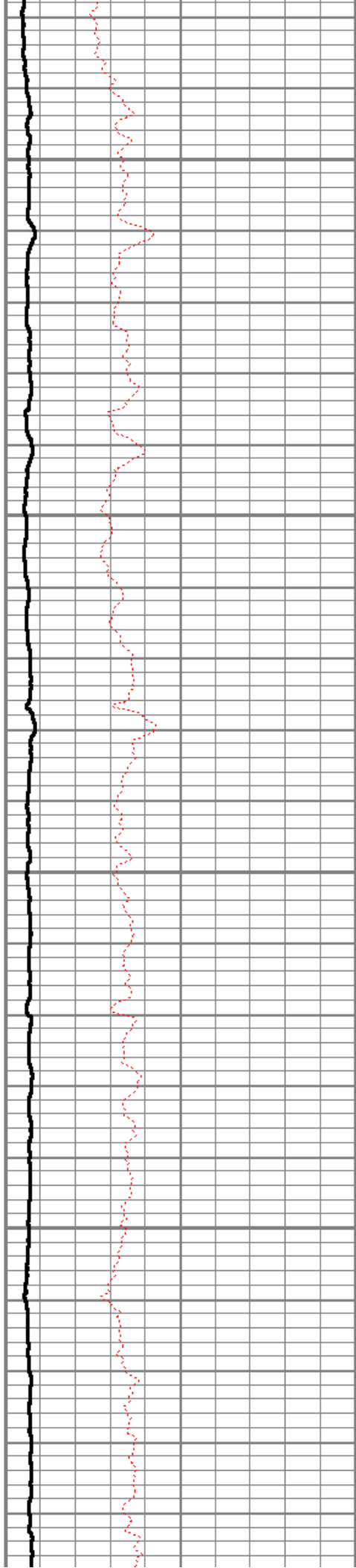


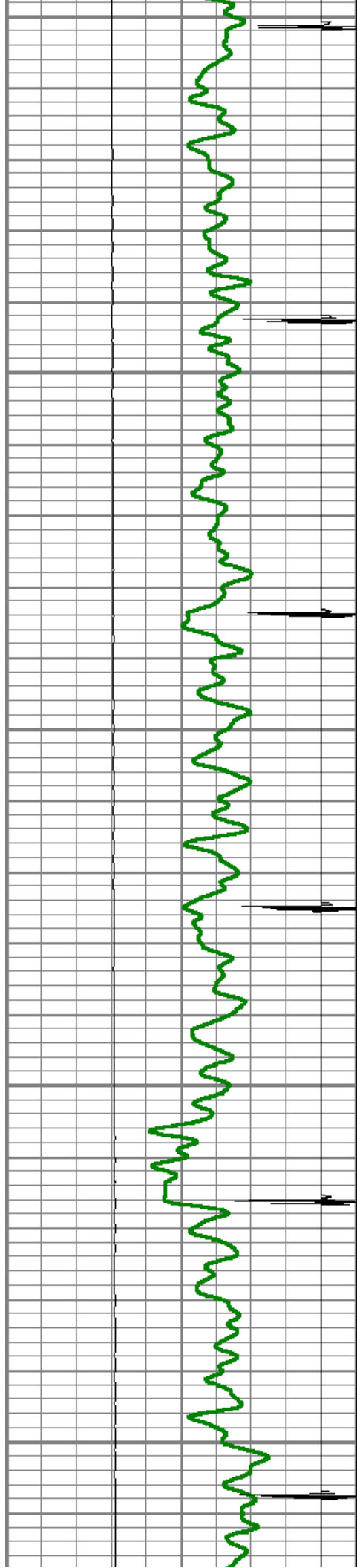
6400

6450

6500

6550





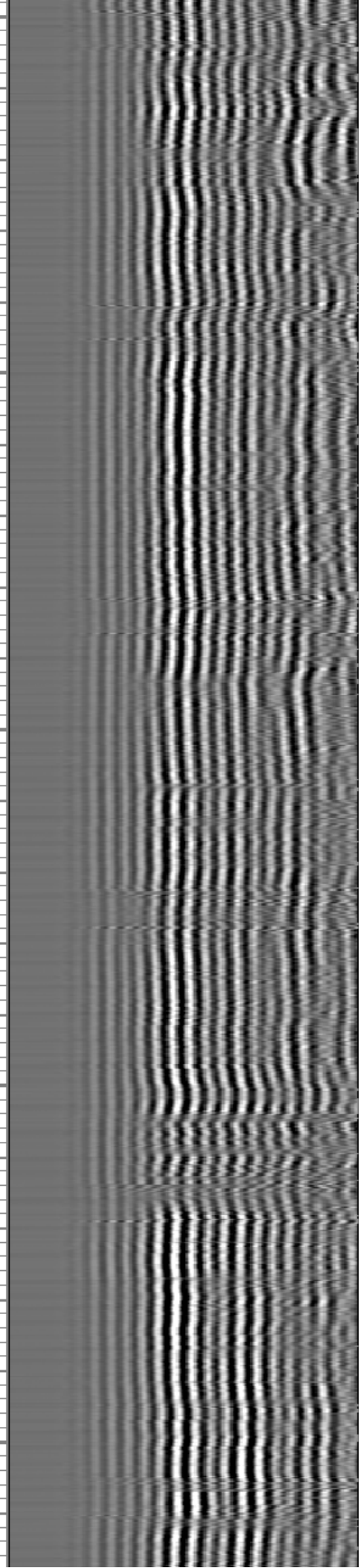
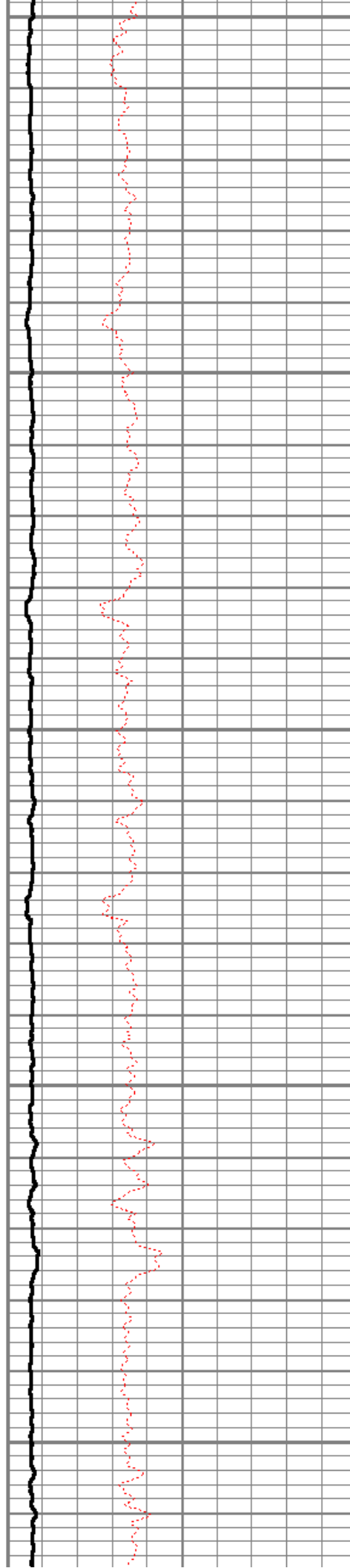
6600

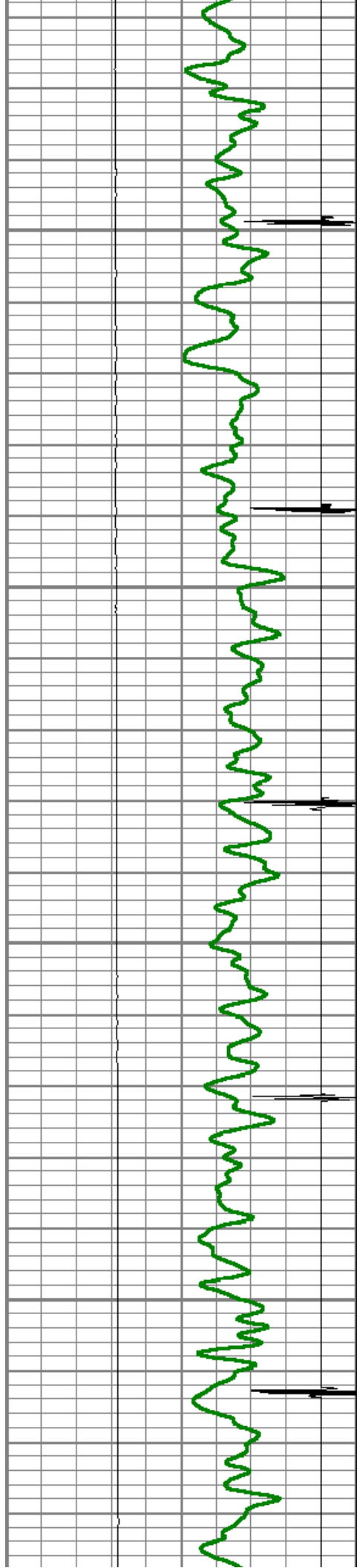
6650

6700

6750

6800



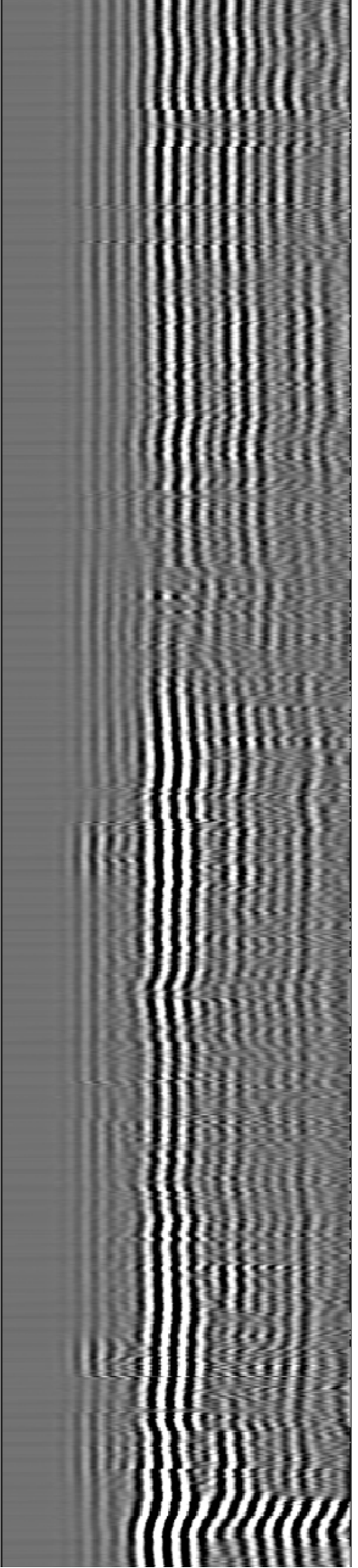
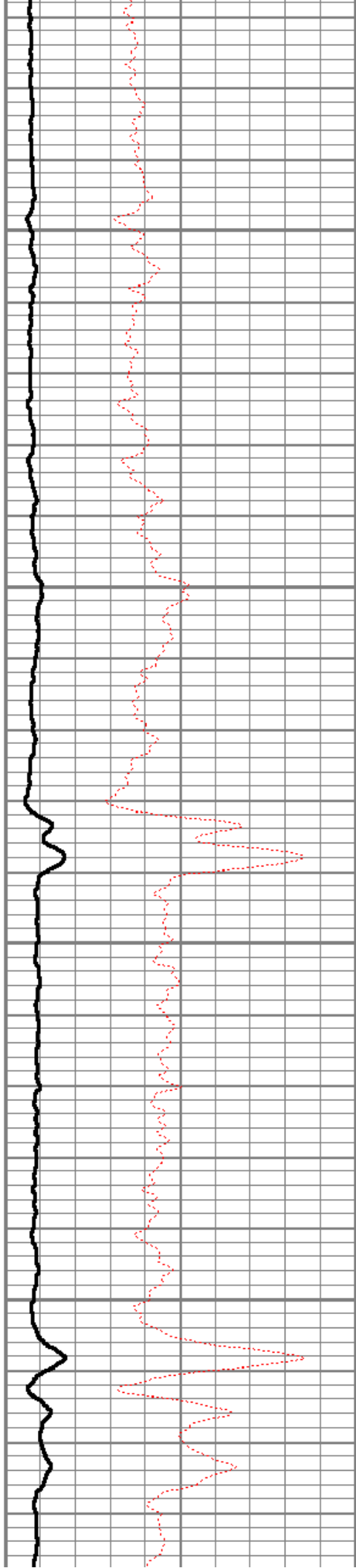


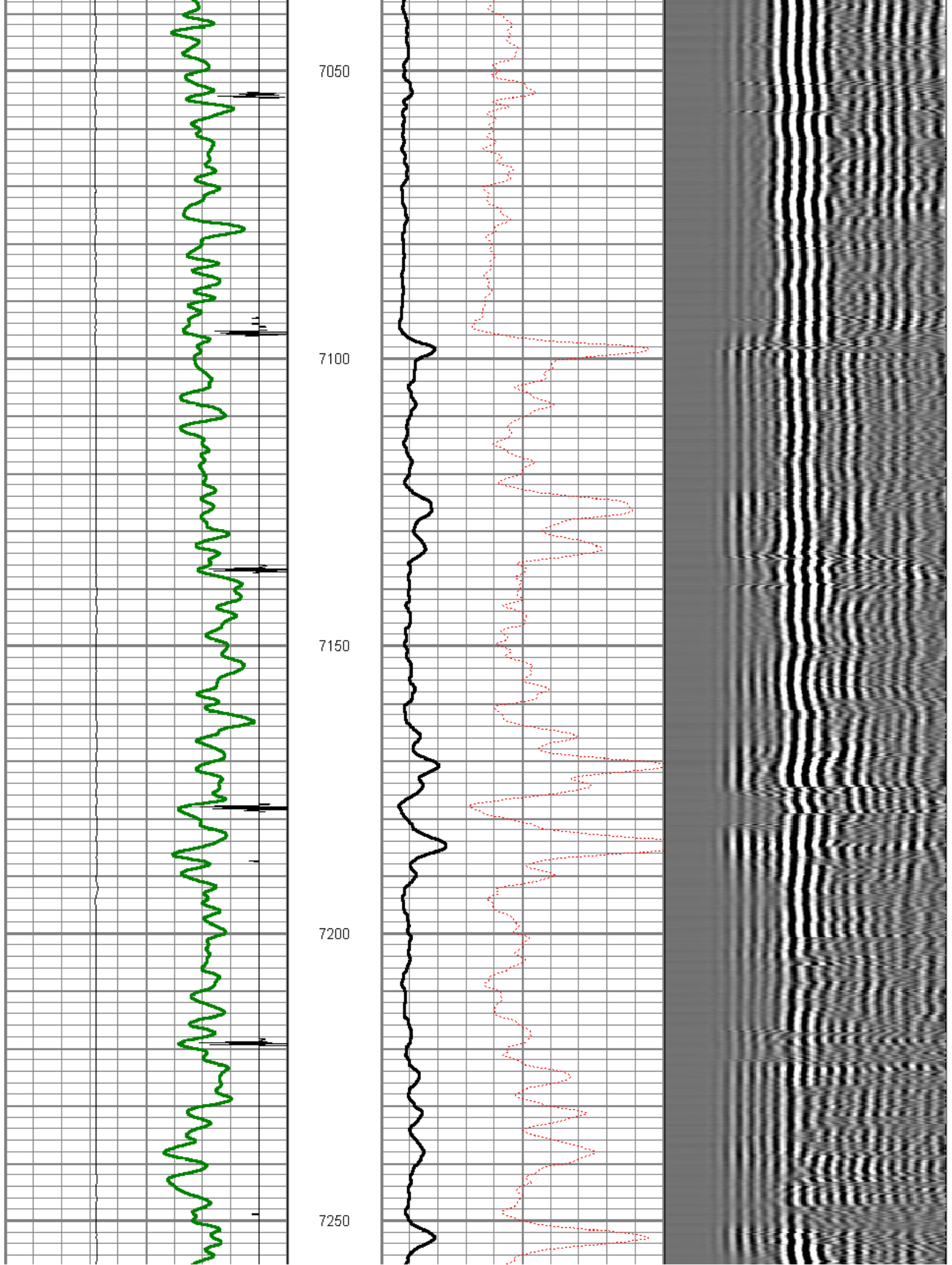
6850

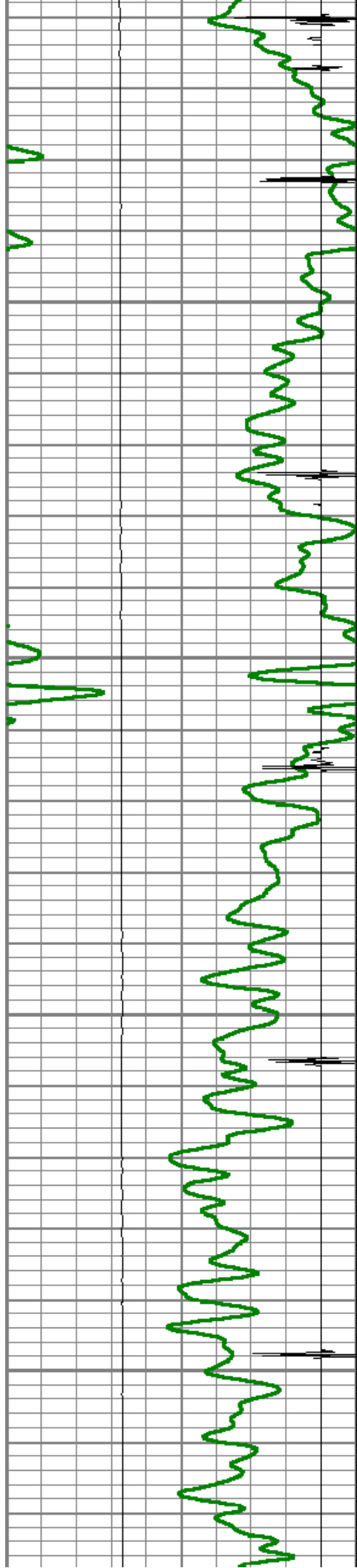
6900

6950

7000







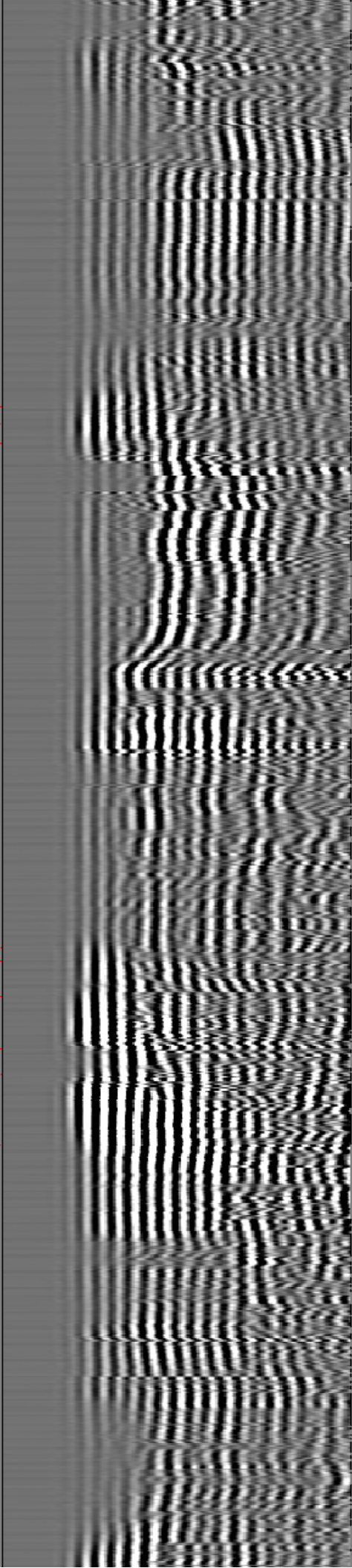
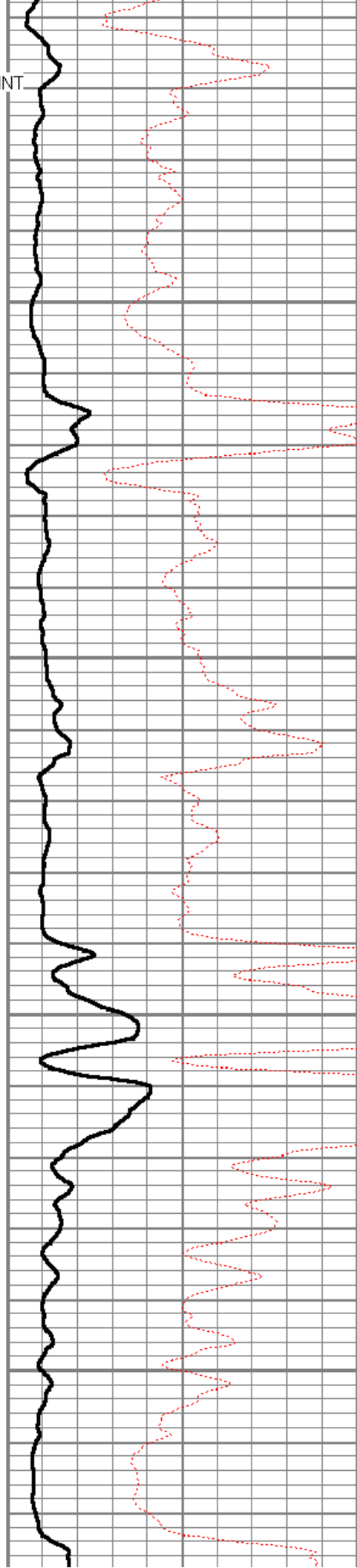
SHORT JOINT

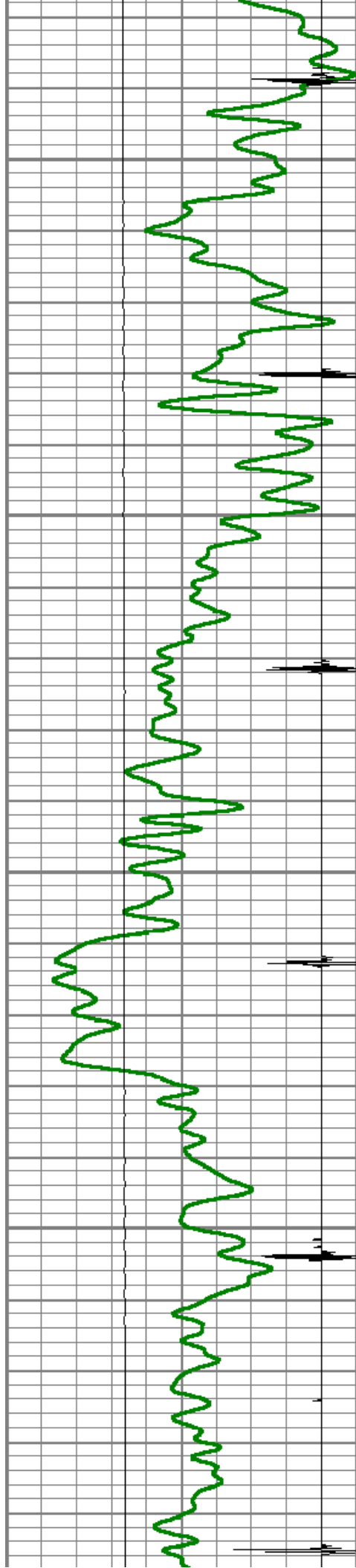
7300

7350

7400

7450



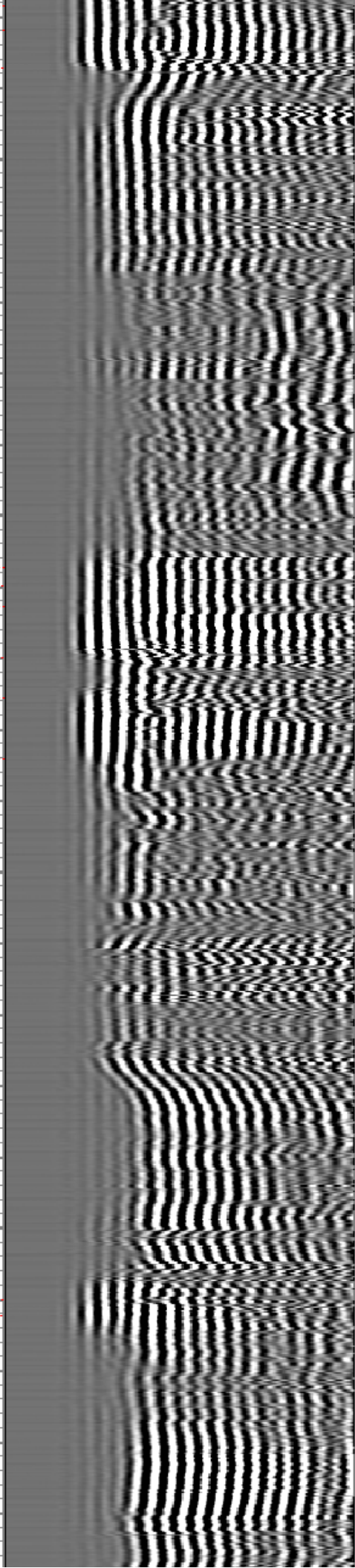
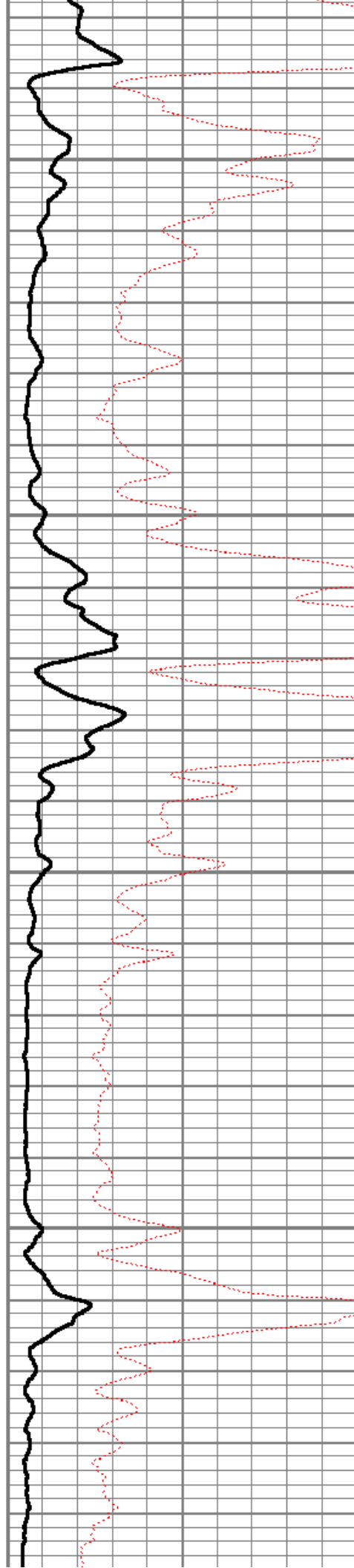


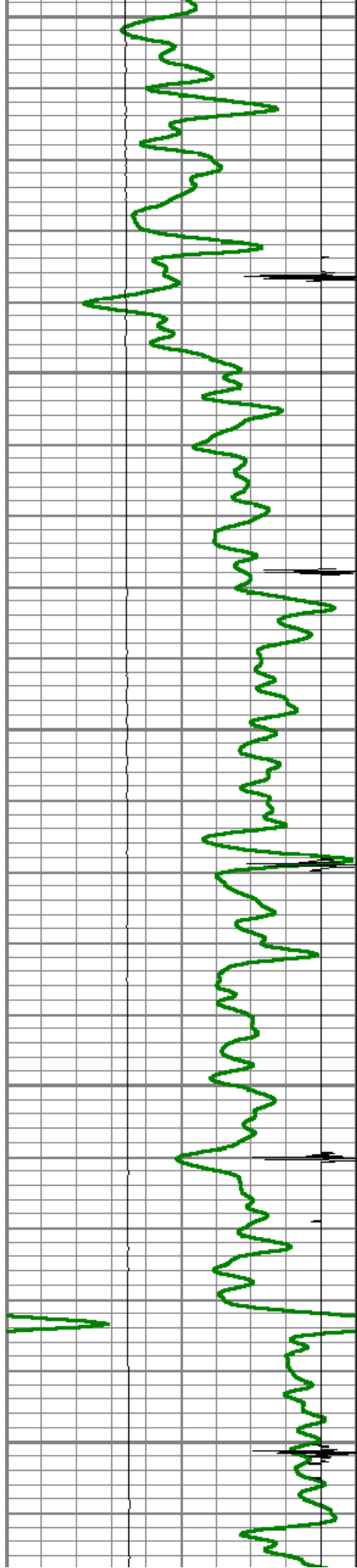
7500

7550

7600

7650





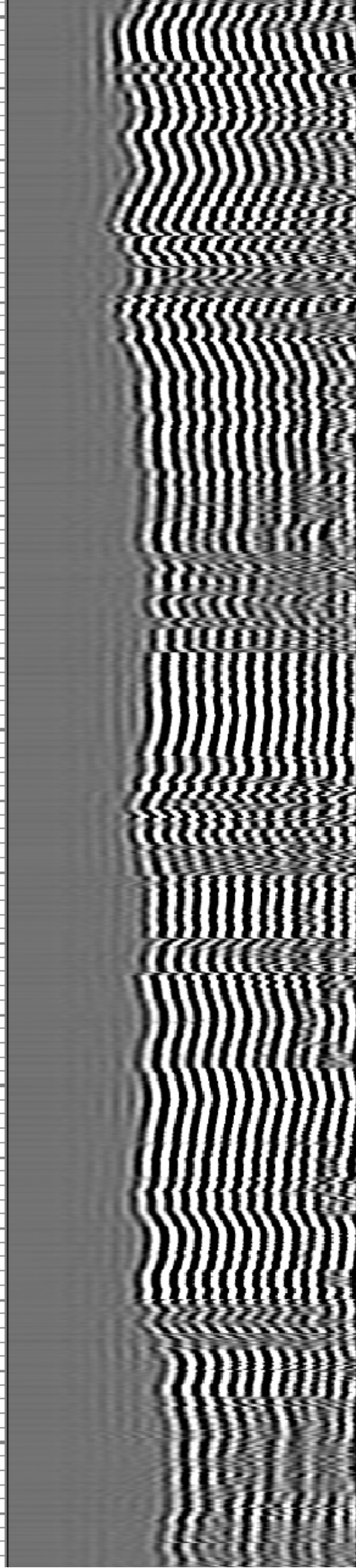
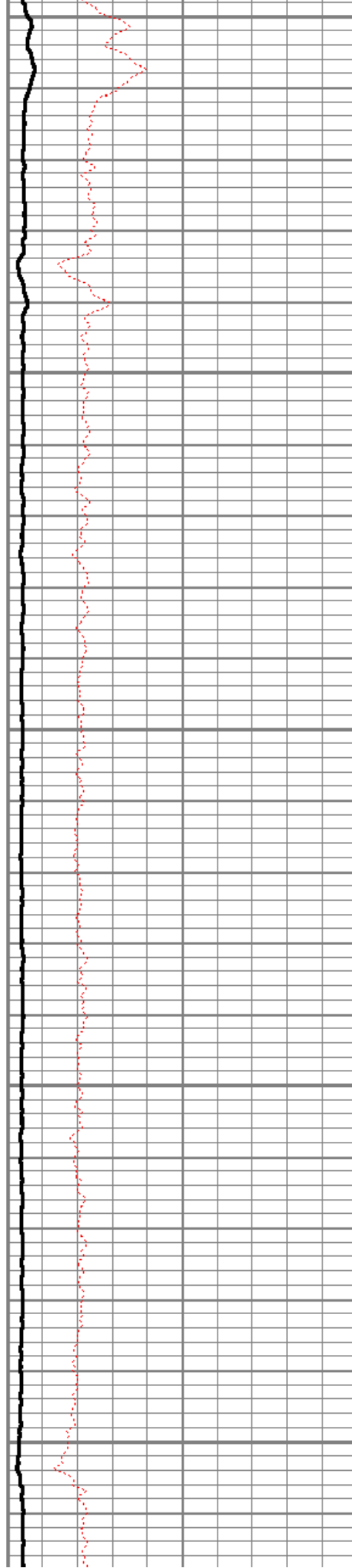
7700

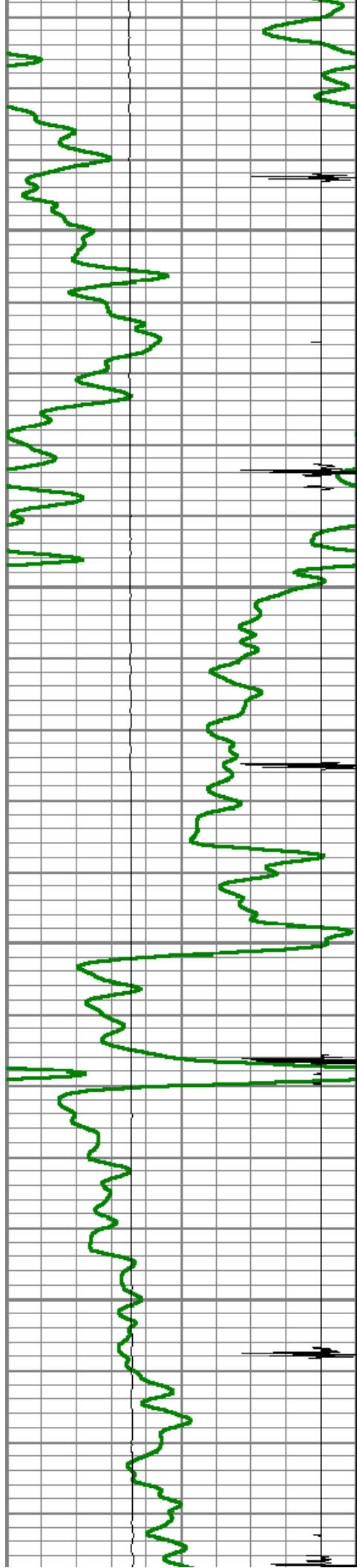
7750

7800

7850

7900





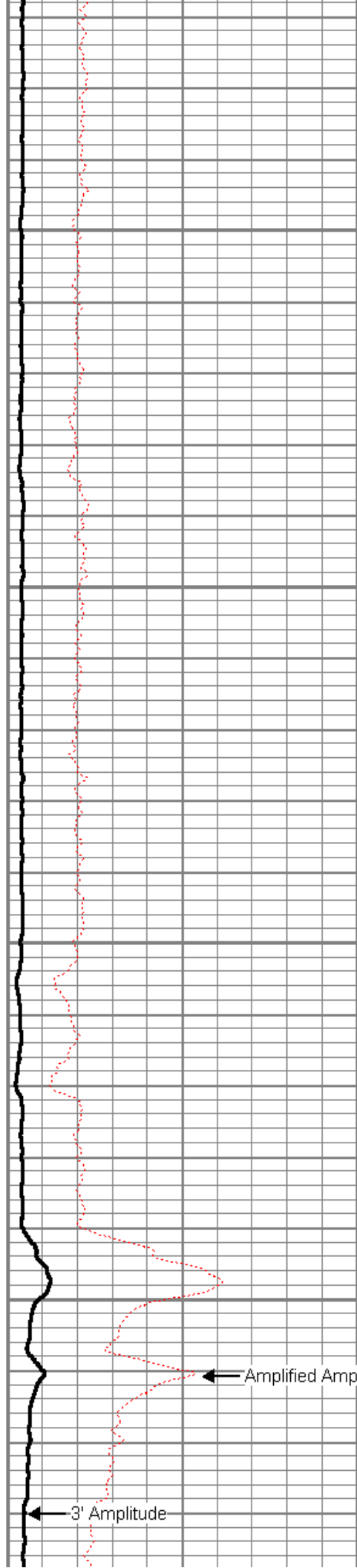
7950

8000

8050

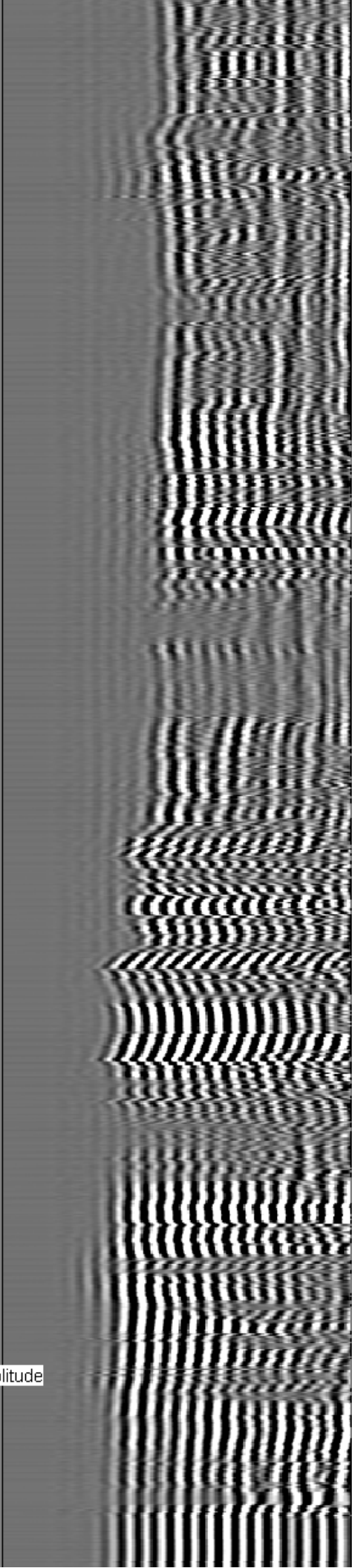
8100

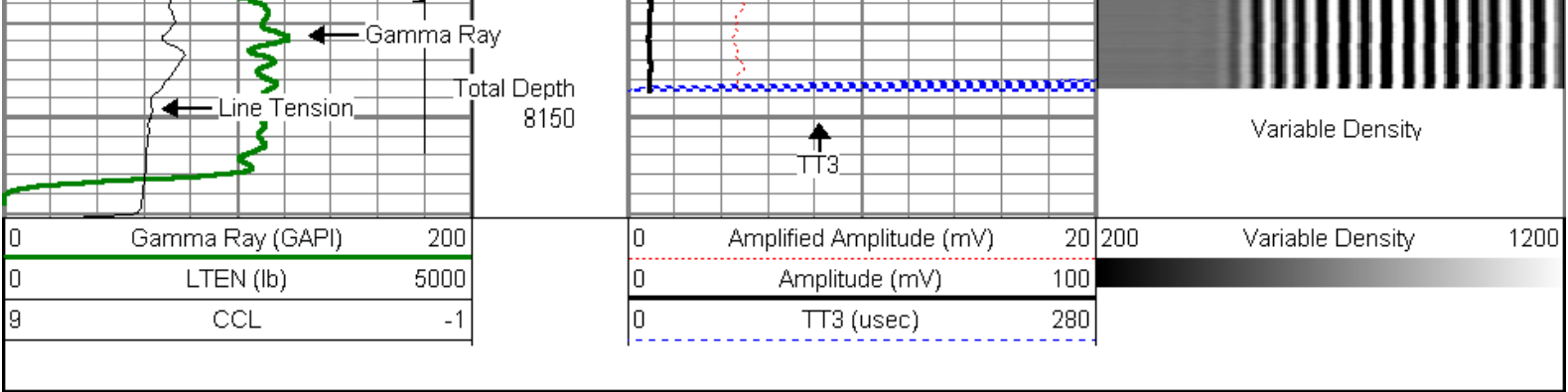
← CCL



← 3' Amplitude

← Amplified Amplitude





Company ENCANA OIL & GAS (USA) INC
Well ELMQUIST 2-4-23
Field WATTENBERG
County WELD
State COLORADO