

HALLIBURTON

WILLIAMS PRODUCTION RMT INC - EBUS

**GM 321-26
GRAND VALLEY
Garfield County , Colorado**

Cement Surface Casing **23-Jul-2011**

Post Job Summary

The Road to Excellence Starts with Safety

Sold To #: 300721		Ship To #: 2864481		Quote #:		Sales Order #: 8306350	
Customer: WILLIAMS PRODUCTION RMT INC - EBUS				Customer Rep: Wilson, W.C			
Well Name: GM		Well #: 321-26		API/UWI #: 05-045-20216			
Field: GRAND VALLEY		City (SAP): PARACHUTE		County/Parish: Garfield		State: Colorado	
Lat: N 39.5 deg. OR N 39 deg. 29 min. 58.942 secs.				Long: W 108.088 deg. OR W -109 deg. 54 min. 44.255 secs.			
Contractor: H&P 280		Rig/Platform Name/Num: H&P 280					
Job Purpose: Cement Surface Casing							
Well Type: Development Well				Job Type: Cement Surface Casing			
Sales Person: SCOTT, KYLE		Srv Supervisor: ERIC CARTER		MBU ID Emp #: 345598			
Job Personnel							
HES Emp Name	Exp Hrs	Emp #	HES Emp Name	Exp Hrs	Emp #	HES Emp Name	Exp Hrs
CARTER, ERIC Earl	6	345598	O'TOOLE, SHAWN Louis	6	496661	ROMKEE, DALE Alan	6
SALAZAR, PAUL Omar	6	445614	WILKERSON, JAMES Michael	6	496763	WOLFE, JON P	6
Equipment							
HES Unit #	Distance-1 way	HES Unit #	Distance-1 way	HES Unit #	Distance-1 way	HES Unit #	Distance-1 way
10533645	60 mile	10722398	60 mile	10951251	60 mile	11139328	60 mile
11139330	60 mile	11560046	60 mile	11562538	60 mile		
Job Hours							
Date	On Location Hours	Operating Hours	Date	On Location Hours	Operating Hours	Date	On Location Hours
7/23/11	6	1					
TOTAL		Total is the sum of each column separately					
Job				Job Times			
Formation Name				Date	Time	Time Zone	
Formation Depth (MD)	Top	0	Bottom	1487 FT.	Called Out	23 - Jul - 2011	05:00
Form Type	BHST			On Location	23 - Jul - 2011	08:30	MST
Job depth MD	1487. ft	Job Depth TVD	1487. ft	Job Started	23 - Jul - 2011	12:32	MST
Water Depth	Wk Ht Above Floor			5. ft	Job Completed	23 - Jul - 2011	13:30
Perforation Depth (MD)	From	To			Departed Loc	23 - Jul - 2011	14:30
Well Data							
Description	New / Used	Max pressure psig	Size in	ID in	Weight lbm/ft	Thread	Grade
OPEN HOLE				13.5			
SURFACE CASING	Unknow n		9.625	9.001	32.3		H-40
Sales/Rental/3 rd Party (HES)							
Description	Qty	Qty uom	Depth	Supplier			
PLUG,CMTG,TOP,9 5/8,HWE,8.16 MIN/9.06 MA	1	EA					
Tools and Accessories							
Type	Size	Qty	Make	Depth	Type	Size	Qty
Guide Shoe					Packer		
Float Shoe					Bridge Plug		
Float Collar					Retainer		
Insert Float							
Stage Tool							
Miscellaneous Materials							
Gelling Agt		Conc		Surfactant		Conc	
Treatment Fld		Conc		Inhibitor		Conc	
				Acid Type		Qty	Conc %
				Sand Type		Size	Qty

Fluid Data									
Stage/Plug #: 1									
Fluid #	Stage Type	Fluid Name	Qty	Qty uom	Mixing Density lbm/gal	Yield ft ³ /sk	Mix Fluid Gal/sk	Rate bbl/min	Total Mix Fluid Gal/sk
1	Fresh Water Spacer		20.00	bbl	.	.0	.0	6	
2	VersaCem Lead	VERSACEM (TM) SYSTEM (452010)	210.0	sacks	12.3	2.38	13.75	8	13.75
	13.75 Gal	FRESH WATER							
3	VersaCem Tail	VERSACEM (TM) SYSTEM (452010)	160.0	sacks	12.8	2.11	11.75	8	11.75
	11.75 Gal	FRESH WATER							
4	Displacement Fluid		111.50	bbl	8.34	.0	.0	10	
Calculated Values		Pressures		Volumes					
Displacement	111.5	Shut In: Instant		Lost Returns	NONE	Cement Slurry	149.1	Pad	
Top Of Cement	SURFACE	5 Min		Cement Returns	10	Actual Displacement	111.5	Treatment	
Frac Gradient		15 Min		Spacers	20	Load and Breakdown		Total Job	280.6
Rates									
Circulating	RIG	Mixing	8	Displacement	10	Avg. Job	9		
Cement Left In Pipe	Amount	43.9 ft	Reason	Shoe Joint					
Frac Ring # 1 @	ID		Frac ring # 2 @	ID		Frac Ring # 3 @	ID		Frac Ring # 4 @
The Information Stated Herein Is Correct				Customer Representative Signature					

The Road to Excellence Starts with Safety

Sold To #: 300721	Ship To #: 2864481	Quote #:	Sales Order #: 8306350
Customer: WILLIAMS PRODUCTION RMT INC - EBUS		Customer Rep: Wilson, W.C	
Well Name: GM	Well #: 321-26	API/UWI #: 05-045-20216	
Field: GRAND VALLEY	City (SAP): PARACHUTE	County/Parish: Garfield	State: Colorado
Legal Description:			
Lat: N 39.5 deg. OR N 39 deg. 29 min. 58.942 secs.		Long: W 108.088 deg. OR W -109 deg. 54 min. 44.255 secs.	
Contractor: H&P 280		Rig/Platform Name/Num: H&P 280	
Job Purpose: Cement Surface Casing			Ticket Amount:
Well Type: Development Well		Job Type: Cement Surface Casing	
Sales Person: SCOTT, KYLE		Srvc Supervisor: ERIC CARTER	MBU ID Emp #: 345598

Activity Description	Date/Time	Cht #	Rate bbl/min	Volume bbl		Pressure psig		Comments
				Stage	Total	Tubing	Casing	
Call Out	07/23/2011 05:00							
Depart Yard Safety Meeting	07/23/2011 06:50							ATTENDED BY ALL HES CREW
Crew Leave Yard	07/23/2011 07:00							
Arrive At Loc	07/23/2011 08:30							RIG RUNNING CASING
Assessment Of Location Safety Meeting	07/23/2011 08:40							ATTENDED BY ALL HES CREW
Other	07/23/2011 08:50							SPOT EQUIPMENT
Pre-Rig Up Safety Meeting	07/23/2011 09:00							ATTENDED BY ALL HES CREW
Rig-Up Equipment	07/23/2011 11:45							
Pre-Job Safety Meeting	07/23/2011 12:15							ATTENDED BY ALL HES CREW, RIG CREW AND COMPANY REP
Start Job	07/23/2011 12:32							TP 1461', TD 1487', SJ 43.99', FC 1417.01', MW 10.2 PPG, CASING 9.625", 32.3#, H-40, HOLE 13.5"
Other	07/23/2011 12:32		2	2			50.0	FILL LINES
Test Lines	07/23/2011 12:34							PRESSURED UP TO 2116 PSI, PRESSURE HELD
Pump Spacer 1	07/23/2011 12:38		6	20			220.0	FRESH WATER
Pump Lead Cement	07/23/2011 12:45		8	80			430.0	210 SKS MIXED AT 12.3 PPG, 2.38 YIELD, 13.75 GL/SK

Sold To #: 300721

Ship To #: 2864481

Quote #:

Sales Order #:

8306350

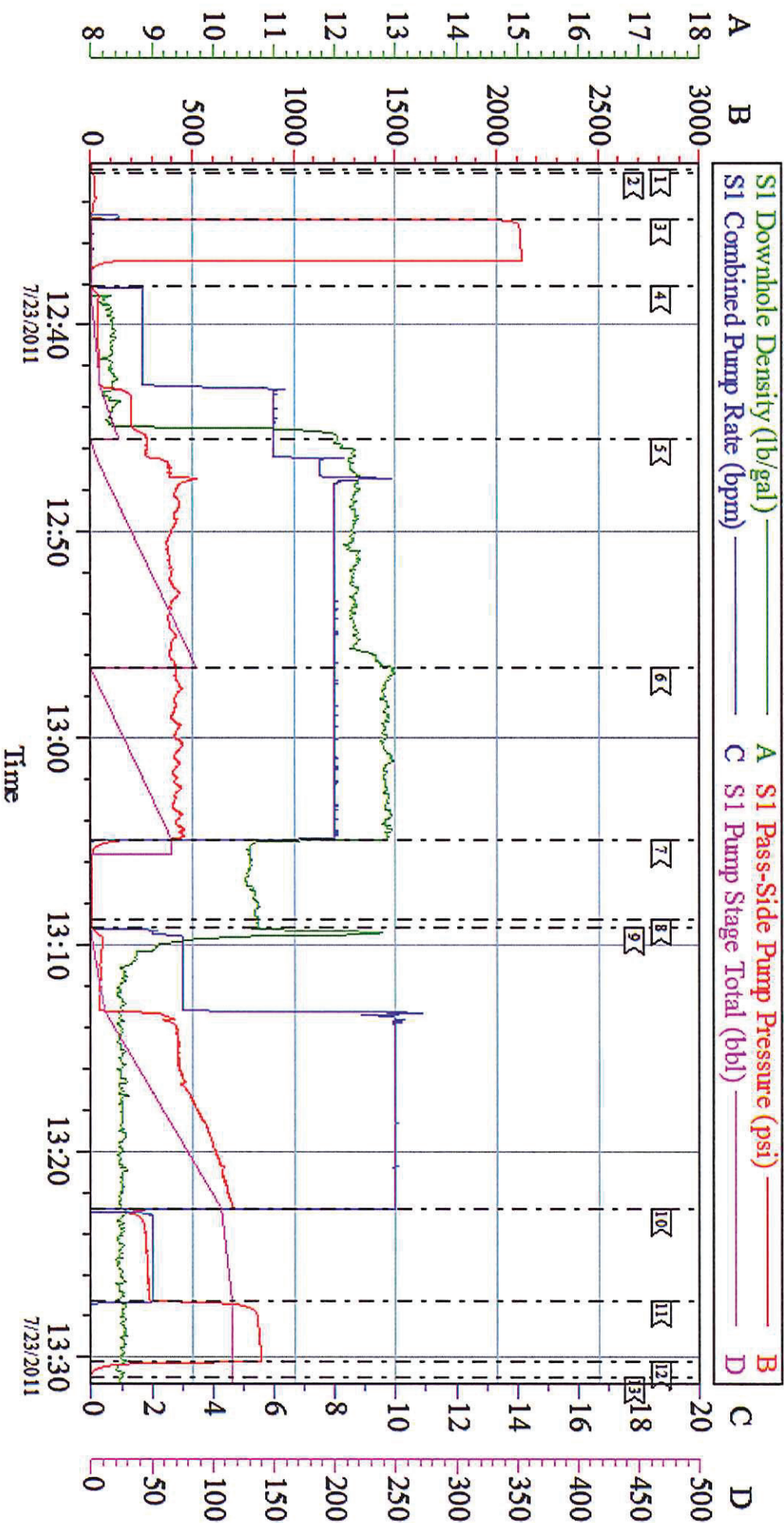
SUMMIT Version: 7.20.130

Saturday, July 23, 2011 01:50:00

Activity Description	Date/Time	Cht #	Rate bbl/min	Volume bbl		Pressure psig		Comments
				Stage	Total	Tubing	Casing	
Pump Tail Cement	07/23/2011 12:56		8	60.1			420.0	160 SKS MIXED AT 12.8 PPG, 2.11 YIELD, 11.75 GL/SK
Shutdown	07/23/2011 13:04							
Drop Top Plug	07/23/2011 13:08							COMPANY REP VERIFIED THAT PLUG LAUNCHED
Pump Displacement	07/23/2011 13:09		10	101.5			670.0	FRESH WATER
Slow Rate	07/23/2011 13:22		2	10			310.0	
Bump Plug	07/23/2011 13:27						842.0	PLUG LANDED
Check Floats	07/23/2011 13:30							FLOATS HELD
End Job	07/23/2011 13:30							GOOD CIRCULATION THROUGH OUT JOB, TRACES OF CEMENT AT 70 BBLS, 10 BBLS GOOD CEMENT TO SURFACE, PIPE WAS NOT MOVED DURING JOG
Post-Job Safety Meeting (Pre Rig-Down)	07/23/2011 13:35							ATTENDED BY ALL HES CREW
Rig-Down Equipment	07/23/2011 13:40							
Depart Location Safety Meeting	07/23/2011 14:20							ATTENDED BY ALL HES CREW
Crew Leave Location	07/23/2011 14:30							THANK YOU FOR USING HALLIBURTON CEMENT, ERIC CARTER AND CREW.

WILLIAMS

9.625" SURFACE/GM 321-26



Local Event Log

<input type="checkbox"/> 1 START JOB	<input type="checkbox"/> 2 FILL LINES	<input type="checkbox"/> 3 TEST LINES	<input type="checkbox"/> 4 UNP H2O SPACER	<input type="checkbox"/> 5 PUMP LEAD CEMENT	<input type="checkbox"/> 6 PUMP TAIL CEMENT	<input type="checkbox"/> 7 SHUTDOWN	<input type="checkbox"/> 8 DROP TOP PLUG	<input type="checkbox"/> 9 PUMP H2O DISPLACEMENT	<input type="checkbox"/> 10 SLOW RATE	<input type="checkbox"/> 11 BUMP PLUG	<input type="checkbox"/> 12 CHECK FLOATS	<input type="checkbox"/> 13 END JOB
12:32:29	12:38:07	12:45:31	13:04:58	13:22:50	13:30:58	12:32:37	12:45:31	12:56:37	13:08:45	13:27:14	13:30:12	12:34:51

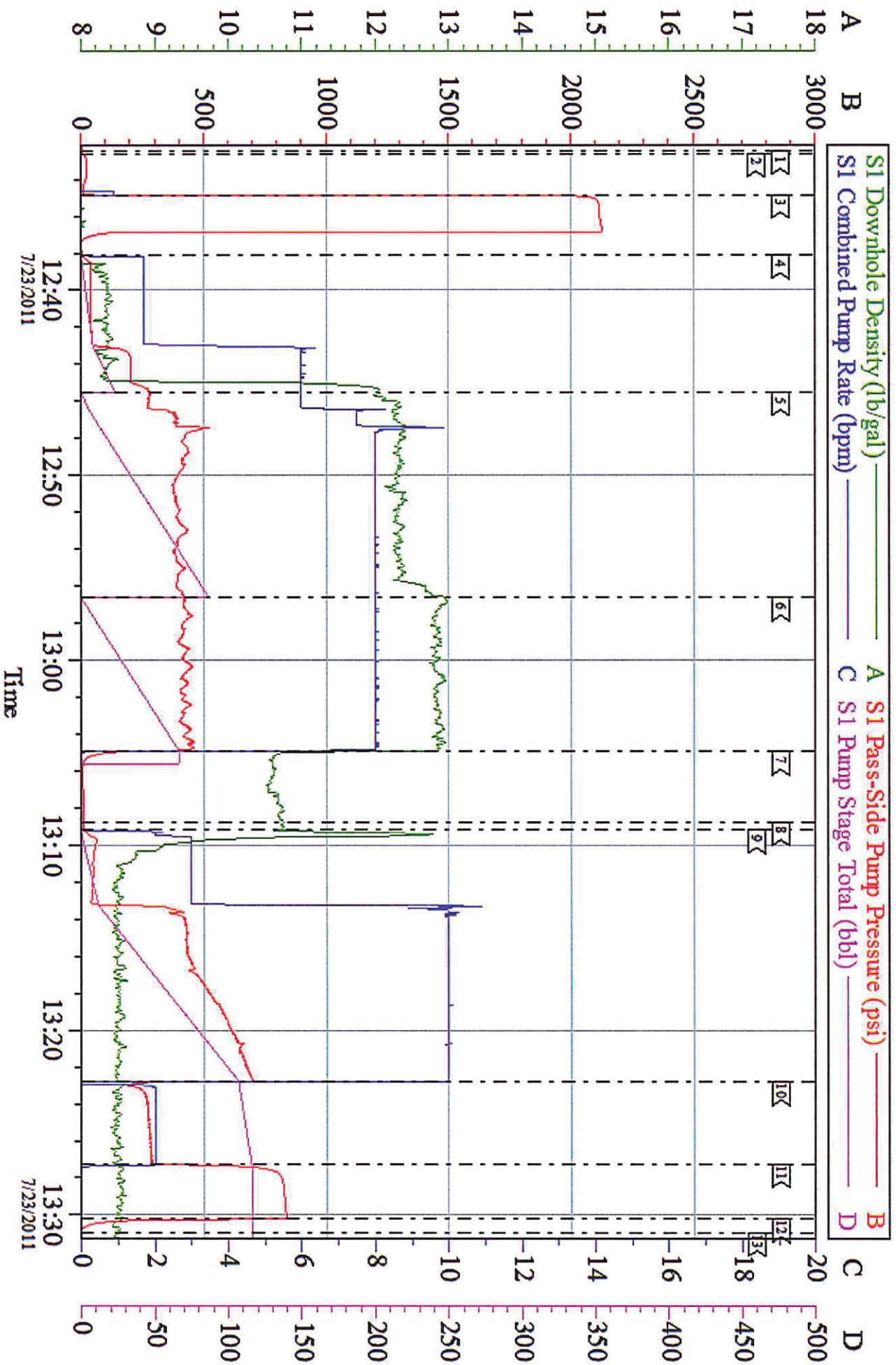
Customer: WILLIAMS PRODUCTION RMT INC - EBUS
 Well Description: GM 321-26
 Company Rep:

Job Date: 23-Jul-2011
 Job Type: 05-045-20216
 Cement Supervisor:

Sales Order #: 8306350
 ADC Used:
 Elite #/Operator:

WILLIAMS

9.625" SURFACE/GM 321-26



Customer: WILLIAMS PRODUCTION RMT INC - EBUS
Well Description: GM 321-26
Company Rep:

Job Date: 23-Jul-2011
Job Type: 05-045-20216
Cement Supervisor:

Sales Order #: 8306350
ADC Used:
Effie #/Operator: