

Frac Wellbore Schematic Report

Well Name: STATE-TINCUP 13-16

Well Config: - ORIGINAL HOLE, 3/13/2012 9:18:12 AM

Well Header

API	Business Unit	Spud Date	Well Configuration Type
05-123-19793	WATTENBERG	8/20/1999	
Orig KB Elev (ft)	KB - GL / ...	Quarter Quarter	Sec/Abs
4,884.00	10	SWSW	16
		Twn/Sur...	Range
		8N	59W
			P & A Date

Comment

POOR INFORMATION IN FILE - INFO FROM STATE REPORTS

Directions To Well

HWY 14 & RD 115, N 2.5, W 3/10 INTO.

Current PBTD (ftKB)

ORIGINAL HOLE - 6516.0

Bottom Hole Location

North-South Distance (ft)	From N or S Line	East-West Distance (ft)	From E or W Line

PBTDs

Date	Depth (ftKB)	Method	Comment
8/30/1999	6,804.0	CASED HOLE LOG	DEPTH LOGGER
5/18/2006	6,800.0	TAG	TAG

Wellbore Sections

Section	Size (in)	Act Top (ftKB)	Act Btm (ftKB)
SURFACE	12 1/4	10.0	395.0
PRODUCTION	7 7/8	395.0	6,840.0

Zone Statuses

Zone	Status Date	Status	Job
J SAND	10/1/1999	PR	DRILLING/COMPLETION - ORIGI...
J SAND	8/30/2011	SI	RECOMPLETION, 8/25/2011 06:00
NIOBRARA	10/13/2011	PR	RECOMPLETION, 8/25/2011 06:00

Casing Strings

Casing Description	Run Date	String OD (in)	String Wt (lbs/ft)	String Grade	Top (ftKB)	Set Depth (ftKB)
Surface	8/20/1999	8 5/8	24.00		10.0	391.0
Production	8/24/1999	5 1/2	15.50		10.0	6,832.0

Cement

Description	Top (ftKB)	Btm (ftKB)
SURFACE CASING CEMENT	10.0	391.0
PRODUCTION CASING CEMENT	5,437.0	6,832.0
Dump Bail	6,570.0	6,580.0
Dump Bail	6,610.0	6,620.0

Tubing Components

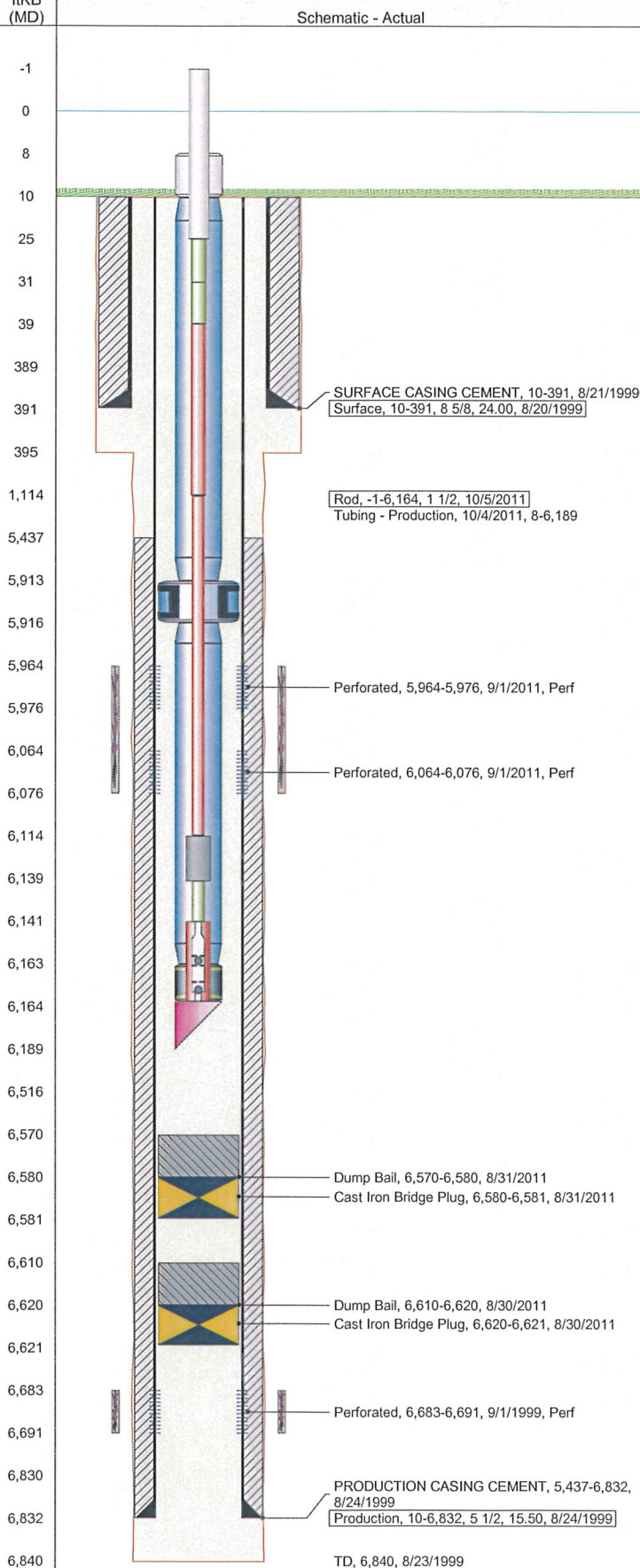
Item Description	OD (in)	Wt (lbs/ft)	Grade	Jts	Len (ft)
Stretch Correction	2 7/8	6.50	J-55	1	2.25
Tubing	2 7/8	6.50	J-55	190	5,902.76
Anchor/catcher	4.9	6.50	J-55	1	2.85
Tubing	2 7/8	6.50	J-55	8	247.13
Pump Seating Nipple	2 7/8	6.50	J-55	1	1.14
Mule Shoe Tubing Joint	2 7/8	6.50	J-55	1	25.26

Rods & Pumps

Rod Description	Run Date	Set Depth (ftKB)
Rod	10/5/2011	6,163.9
Comment		

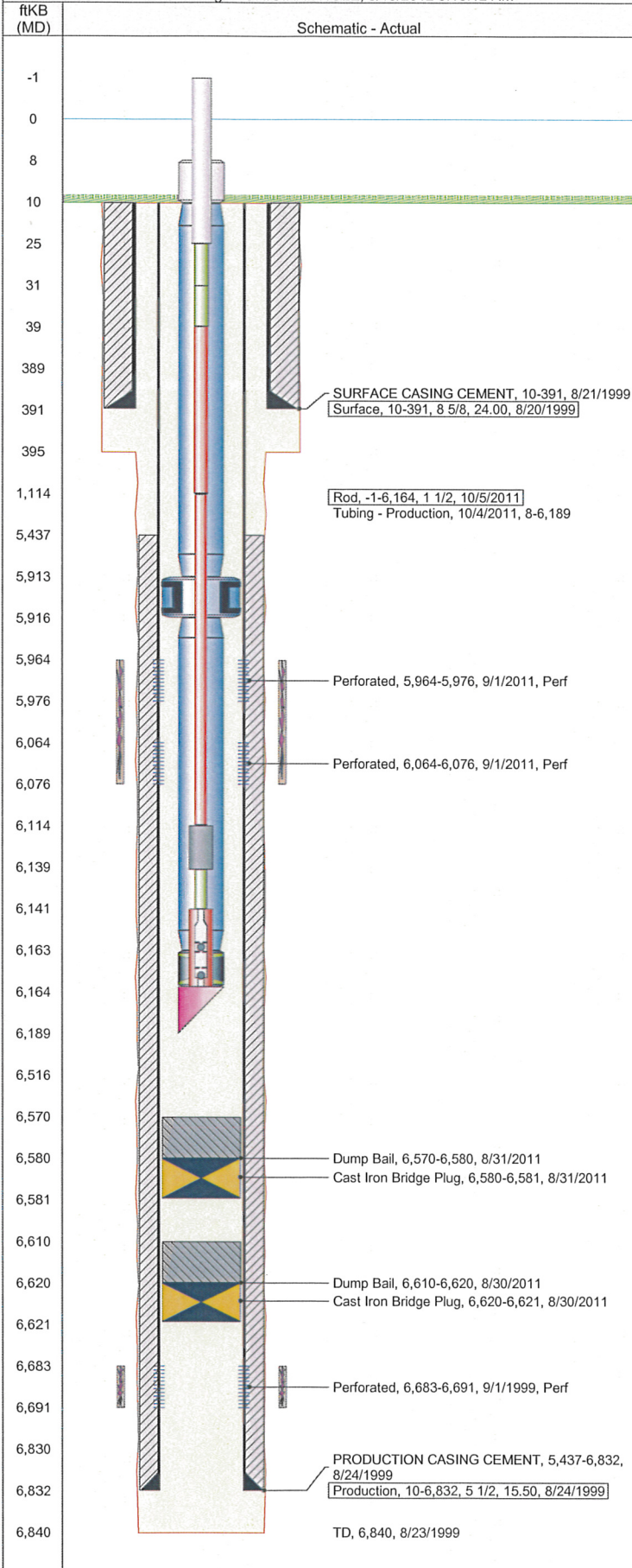
Item Description	OD Nominal (in)	Joints	Length (ft)
Polished Rod	1 1/4	1	26.00
Pony Rod	7/8	1	6.00
Pony Rod	7/8	1	8.00
Sucker Rod	7/8	43	1,075.00
Sucker Rod	3/4	200	5,000.00
Sinker Bar	1 1/2	1	25.00
Pony Rod	3/4	1	2.00
RHBC Pump - BHD	1 1/2	1	23.00

API Pump Type	Barrel Length (ft)	Seating Assembly Type
R	23.00	C



Well Name: STATE-TINCUP 13-16

Well Config: - ORIGINAL HOLE, 3/13/2012 9:18:12 AM



Perforation Data

Zone	Bnch/Stg	Entered Shot Total	Top (ftKB)	Btm (ftKB)	Date
NIOBRARA, ORIGI...	A	24	5,964.0	5,976.0	9/1/2011
NIOBRARA, ORIGI...	B	24	6,064.0	6,076.0	9/1/2011
J SAND, ORIGINA...		32	6,683.0	6,691.0	9/1/1999

Stimulations & Treatments

Bnch/...	Date	Zone	Primary Job Type
	9/3/1999	J SAND, ORIGINAL HOLE	DRILLING/COMPLETION - ORIGINAL

Comment

ACID BREAK DOWN

Total Add Amount	V (pumped) (gal)	V (slurry) (gal)	V (gas) (mcf)
		349	
Avg Treat Pressure (psi)	Max Treat Pressure (psi)	Avg Treat Rate (bbl/min)	Max Treat Rate (bbl/min)

Bnch/...	Date	Zone	Primary Job Type
	9/24/1999	J SAND, ORIGINAL HOLE	DRILLING/COMPLETION - ORIGINAL

Comment

AMT OF FRAC FLUID UNKNOWN

Total Add Amount	V (pumped) (gal)	V (slurry) (gal)	V (gas) (mcf)
Proppant 10000 lb			
Avg Treat Pressure (psi)	Max Treat Pressure (psi)	Avg Treat Rate (bbl/min)	Max Treat Rate (bbl/min)

Bnch/...	Date	Zone	Primary Job Type
A/B	9/22/2011	NIOBRARA, ORIGINAL HOLE	RECOMPLETION

Comment

(NIO A/B RC) PRESSURE WAS SPIKING HIGH, SO STARTED BF7L @ 0.2 GPT DURING SW PAD - PRESSURE DECREASED CONSIDERABLY. WENT TO FLUSH JUST OVER HALFWAY IN 3# - TREATING PRESSURE WAS SPIKING AND ERRATIC, AND DROPPING RATE DIDN'T HELP. CROSS-LINK SAMPLES LOOKED SLOPPY AND WEAK THROUGHOUT TREATMENT UNTIL MID 3#. XL30AG WAS RUNNING BEHIND SO XL32 WAS INCREASED BY 0.10 GPT.

AVG VISC = 12.9 CP, AVG TEMP = 68.4 F, AVG PH = 10.02, POST-JOB 5 MINUTE = 1745 PSI.

ADDITIONAL CHEMICALS PUMPS: GW-3LDF (GEL) = 436 GALLONS, BF-7L (PH CONTROL) = 49 GALLONS, XLW-32 (CROSSLINK) = 13 GALLONS, XLW-30AG (CROSSLINK) = 51 GALLONS, ENZYME G HT III (BREAKER) = 52 GALLONS.

Total Add Amount	V (pumped) (gal)	V (slurry) (gal)	V (gas) (mcf)
Proppant Ottawa 155675.399 lb	128750	135780	
Avg Treat Pressure (psi)	Max Treat Pressure (psi)	Avg Treat Rate (bbl/min)	Max Treat Rate (bbl/min)
5,983.0	6,674.0	35.80	36.10

Other In Hole

Run Date	Description	OD (in)	Top (ftKB)	Btm (ftKB)
8/30/2011	Cast Iron Bridge Plug	4.9	6,620.0	6,621.0
8/31/2011	Cast Iron Bridge Plug	4.9	6,580.0	6,581.0

Logs

Date	Type	Top (ftKB)	Btm (ftKB)
8/23/1999	COMPENSATED DENSITY	5,750.0	6,840.0
8/23/1999	INDUCTION	391.0	6,840.0
8/23/1999	SONIC	391.0	6,840.0
8/30/1999	CEMENT BOND	5,310.0	6,804.0