

**HALLIBURTON**

---

# **WILLIAMS PRODUCTION RMT INC - EBUS**

---

**GM 434-22  
GRAND VALLEY  
Garfield County , Colorado**

**Cement Surface Casing  
15-Jul-2011**

**Job Site Documents**

*The Road to Excellence Starts with Safety*

Sold To #: 300721	Ship To #: 2863177	Quote #:	Sales Order #: 8288560
Customer: WILLIAMS PRODUCTION RMT INC - EBUS		Customer Rep: Wilson, W.C	
Well Name: GM	Well #: 434-22	API/UWI #: 05-045-20227	
Field: GRAND VALLEY	City (SAP): PARACHUTE	County/Parish: Garfield	State: Colorado
Lat: N 39.5 deg. OR N 39 deg. 29 min. 58.974 secs.		Long: W 108.088 deg. OR W -109 deg. 54 min. 44.136 secs.	
Contractor: H&P 280	Rig/Platform Name/Num: H&P 280		
Job Purpose: Cement Surface Casing			
Well Type: Development Well		Job Type: Cement Surface Casing	
Sales Person: KOHL, KYLE	Srv Supervisor: FEUERBORN, JOHN	MBU ID Emp #: 381677	

**Job Personnel**

HES Emp Name	Exp Hrs	Emp #	HES Emp Name	Exp Hrs	Emp #	HES Emp Name	Exp Hrs	Emp #
ANDERSON, ADAM S	5	456683	FEUERBORN, JOHN William	5	381677	HAYES, DIRK A	5	336768
KUKUS, CARLTON Dean	5	458577	LYNGSTAD, FREDRICK D	5	403742	WOLFE, JON P	5	485217

**Equipment**

HES Unit #	Distance-1 way	HES Unit #	Distance-1 way	HES Unit #	Distance-1 way	HES Unit #	Distance-1 way
10011429	60 mile	10784064	60 mile	10951245	60 mile	11006314	60 mile
11560046	60 mile	11562538	60 mile				

**Job Hours**

Date	On Location Hours	Operating Hours	Date	On Location Hours	Operating Hours	Date	On Location Hours	Operating Hours
7/15/11	5	1						
TOTAL		Total is the sum of each column separately						

**Job**

Formation Name	Formation Depth (MD)	Top	Bottom	Form Type	Job depth MD	Water Depth	Perforation Depth (MD)	From	To
				BHST	1765. ft				
					Job Depth TVD	1765. ft			
					Wk Ht Above Floor	4. ft			

**Job Times**

Date	Time	Time Zone
15 - Jul - 2011	06:20	MST
15 - Jul - 2011	09:30	MST
15 - Jul - 2011	12:22	MST
15 - Jul - 2011	13:33	MST

**Well Data**

Description	New / Used	Max pressure psig	Size in	ID in	Weight lbm/ft	Thread	Grade	Top MD ft	Bottom MD ft	Top TVD ft	Bottom TVD ft
-------------	------------	-------------------	---------	-------	---------------	--------	-------	-----------	--------------	------------	---------------

**Sales/Rental/3<sup>rd</sup> Party (HES)**

Description	Qty	Qty uom	Depth	Supplier
PLUG,CMTG,TOP,9 5/8,HWE,8.16 MIN/9.06 MA	1	EA		

**Tools and Accessories**

Type	Size	Qty	Make	Depth	Type	Size	Qty	Make	Depth	Type	Size	Qty	Make
Guide Shoe					Packer					Top Plug	9.625	1	
Float Shoe					Bridge Plug					Bottom Plug			
Float Collar					Retainer					SSR plug set			
Insert Float										Plug Container	9.625	1	
Stage Tool										Centralizers			

**Miscellaneous Materials**

Gelling Agt	Conc	Surfactant	Conc	Acid Type	Qty	Conc	%
Treatment Fld	Conc	Inhibitor	Conc	Sand Type	Size	Qty	

Fluid Data										
Stage/Plug #: 1										
Fluid #	Stage Type	Fluid Name	Qty	Qty uom	Mixing Density lbm/gal	Yield ft <sup>3</sup> /sk	Mix Fluid Gal/sk	Rate bbl/min	Total Mix Fluid Gal/sk	
1	Fresh Water Spacer		20	bbl	.	.0	.0	.0		
2	VersaCem Lead	VERSACEM (TM) SYSTEM (452010)	260	sacks	12.3	2.38	13.75		13.75	
	13.75 Gal	FRESH WATER								
3	VersaCem Tail	VERSACEM (TM) SYSTEM (452010)	160	sacks	12.8	2.11	11.76		11.76	
	11.76 Gal	FRESH WATER								
4	Displacement Fluid		134	bbl	8.34	.0	.0	.0		
Calculated Values			Pressures		Volumes					
Displacement	134	Shut In: Instant		Lost Returns		Cement Slurry	170	Pad		
Top Of Cement		5 Min		Cement Returns	50	Actual Displacement	134	Treatment		
Frac Gradient		15 Min		Spacers	20	Load and Breakdown		Total Job		
Rates										
Circulating		Mixing		Displacement		Avg. Job				
Cement Left In Pipe	Amount	44 ft	Reason	Shoe Joint						
Frac Ring # 1 @	ID	Frac ring # 2 @	ID	Frac Ring # 3 @	ID	Frac Ring # 4 @	ID			
The Information Stated Herein Is Correct				Customer Representative Signature						



*The Road to Excellence Starts with Safety*

The Road to Excellence Starts with Safety

Sold To #: 300721	Ship To #: 2863177	Quote #:	Sales Order #: 8288560
Customer: WILLIAMS PRODUCTION RMT INC - EBUS		Customer Rep: Wilson, W.C	
Well Name: GM	Well #: 434-22	API/UWI #: 05-045-20227	
Field: GRAND VALLEY	City (SAP): PARACHUTE	County/Parish: Garfield	State: Colorado
Legal Description:			
Lat: N 39.5 deg. OR N 39 deg. 29 min. 58.974 secs.		Long: W 108.088 deg. OR W -109 deg. 54 min. 44.136 secs.	
Contractor: H&P 280		Rig/Platform Name/Num: H&P 280	
Job Purpose: Cement Surface Casing			Ticket Amount:
Well Type: Development Well		Job Type: Cement Surface Casing	
Sales Person: KOHL, KYLE		Srv Supervisor: FEUERBORN, JOHN	MBU ID Emp #: 381677

Activity Description	Date/Time	Cht #	Rate bbl/min	Volume bbl		Pressure psig		Comments
				Stage	Total	Tubing	Casing	
Pre-Convoy Safety Meeting	07/15/2011 08:15							
Crew Leave Yard	07/15/2011 08:30							
Arrive At Loc	07/15/2011 09:30							30 MIN LATE BUT RIG WAS STILL RUNNING CASING WE WHERE RIGED UP AND READY WHEN THE RIG WAS DONE CIR. WELL
Other	07/15/2011 09:40							SPOT EQUIPMENT
Pre-Rig Up Safety Meeting	07/15/2011 09:45							
Other	07/15/2011 10:50							RIG CIRCULATING WELL
Pre-Job Safety Meeting	07/15/2011 12:00							
Start Job	07/15/2011 12:20							
Test Lines	07/15/2011 12:23							2500psi ON TRUCK AND LINES
Pump Spacer 1	07/15/2011 12:27		6	20				H2O
Pump Lead Cement	07/15/2011 12:35		8	110.2				260sks PUMPED AT 12.3ppg 2.38y 13.75wr TOP OF LEAD 0' 50 bbls TO SURFACE
Pump Tail Cement	07/15/2011 12:59		8	60.1				160sks PUMPED AT 12.8ppg 2.11y 11.75wr TOP OF TAIL
Drop Plug	07/15/2011 13:08							PLUG AWAY WASH UP ON TOP OF PLUG
Pump Displacement	07/15/2011 13:13							H2O

Sold To #: 300721

Ship To #: 2863177

Quote # :

Sales Order # :

8288560

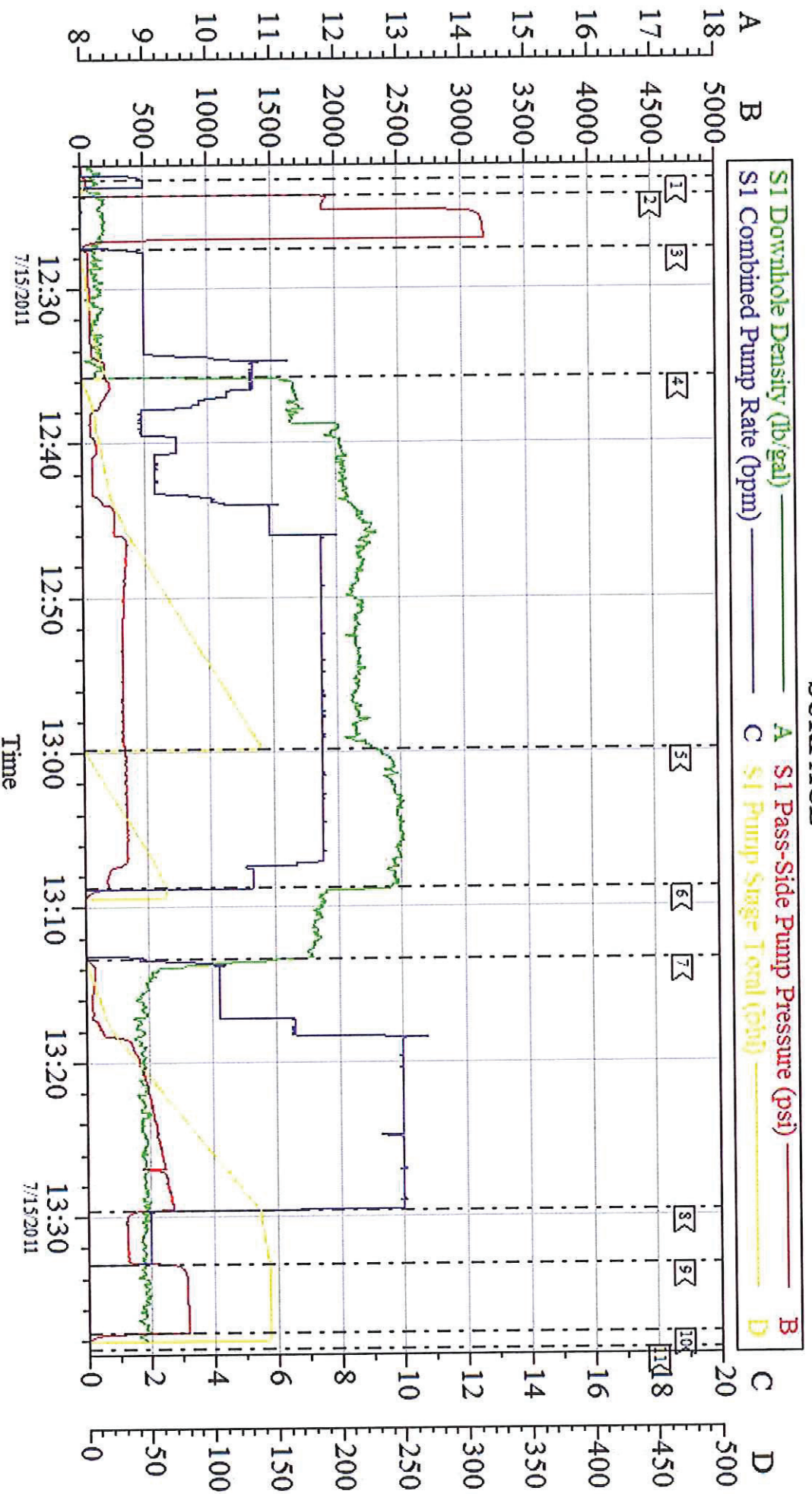
SUMMIT Version: 7.2.27

Monday, July 18, 2011 01:48:00

Activity Description	Date/Time	Cht #	Rate bbl/ min	Volume bbl		Pressure psig		Comments
				Stage	Total	Tubing	Casing	
Other	07/15/2011 13:29			122				SLOW RATE
Bump Plug	07/15/2011 13:33			132.1				
Check Floats	07/15/2011 13:37							HOLDING
End Job	07/15/2011 13:38							GOOD RETURNS PIPE LEFT STATIC
Post-Job Safety Meeting (Pre Rig-Down)	07/15/2011 13:43							
Safety Meeting	07/15/2011 14:00							
Crew Leave Location	07/15/2011 14:15							



# WILLIAMS SURFACE

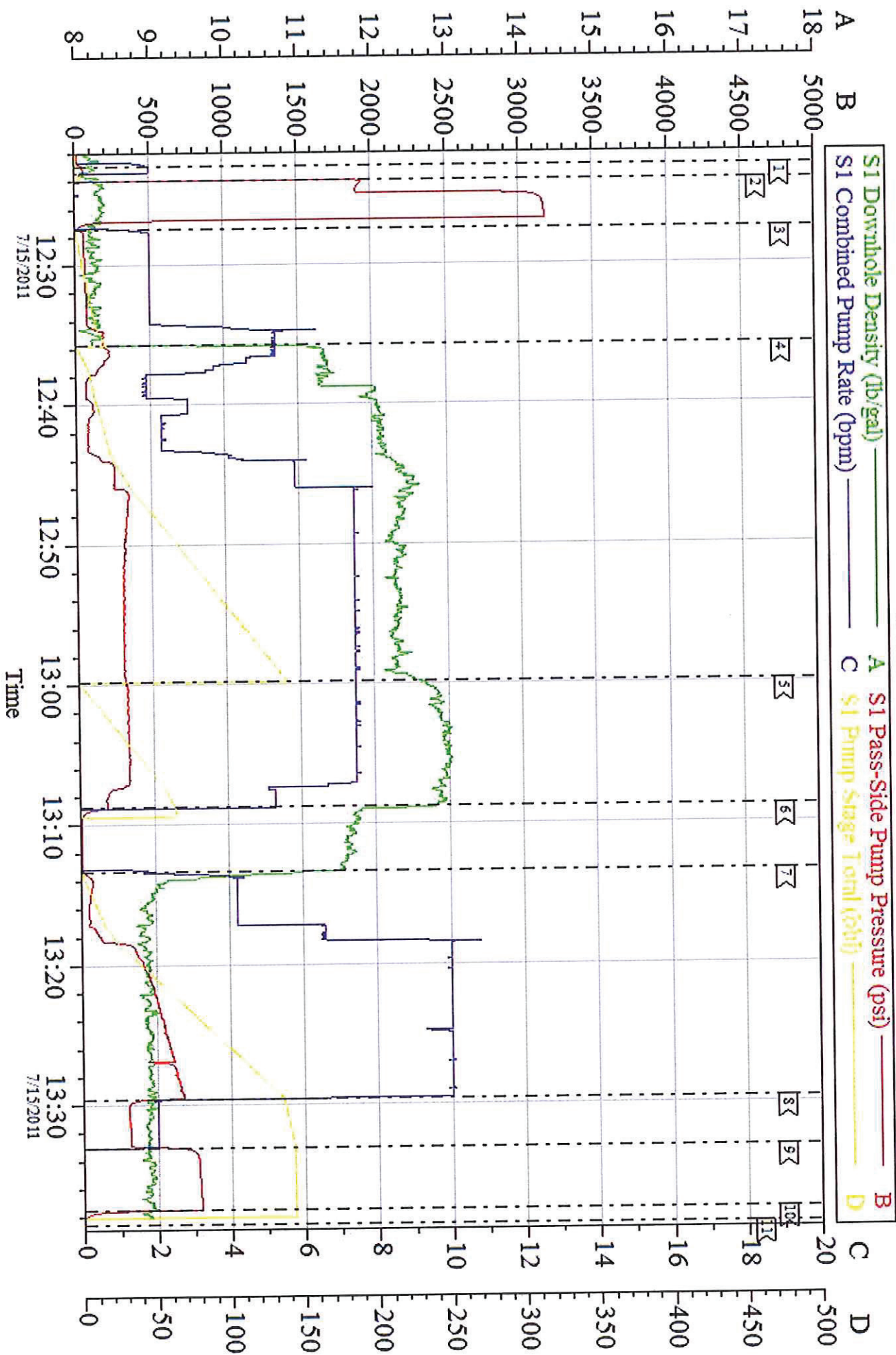


Customer: WILLIAMS  
Well Description: GM 434-22  
Company Rep: MIKE OLSEN

Job Date: 15-Jul-2011  
Job Type: SURFACE  
Cement Supervisor: JOHN FEUERBORN

Sales Order #: 8288560  
ADC Used: YES  
Elite #5 ADAM ANDERSON

# WILLIAMS SURFACE



Customer: WILLIAMS  
Well Description: GMA 43+22  
Company Rep: MIKE OLSEN

Job Date: 15-Jul-2011  
Job Type: SURFACE  
Cement Supervisor: JOHN FEUERBORN

Sales Order #: 8288560  
ADC Used: YES  
Elite #5: ADAM ANDERSON