

**GREAT WESTERN OIL & GAS COMPANY**

Well location, H-Y #29-21-3, located as shown in the NE 1/4 NW 1/4 of Section 29, T6N, R67W, 6th P.M., Weld County, Colorado.

## BASIS OF ELEVATION

USGS COOPERATIVE BASE NETWORK CONTROL STATION,  
DESIGNATION 'VERMILYEA'. NGS DATA SHEET LISTS THE  
NAVD 88 ELEVATION AS BEING 5026 FEET

## BASIS OF BEARINGS

**BASIS OF BEARINGS IS A G.P.S. OBSERVATION.**



# CERTIFICATE

THIS IS TO CERTIFY THAT THE ABOVE PLAT WAS PREPARED FROM  
FIELD NOTES OF ACTUAL SURVEYS MADE BY ME OR UNDER MY  
SUPERVISION AND THAT THE SAME ARE TRUE AND CORRECT TO THE  
BEST OF MY KNOWLEDGE AND BELIEF.

REGISTERED LAND SURVEYOR  
REGISTRATION NO. 17492  
STATE OF COLORADO

REVISÉ: 02-29-12

UTAH ENGINEERING & LAND SURVEYING

85 SOUTH 200 EAST - VERNAL, UTAH 84078

(435) 789-1017

**POOP = 2.1**

1" = 1000'

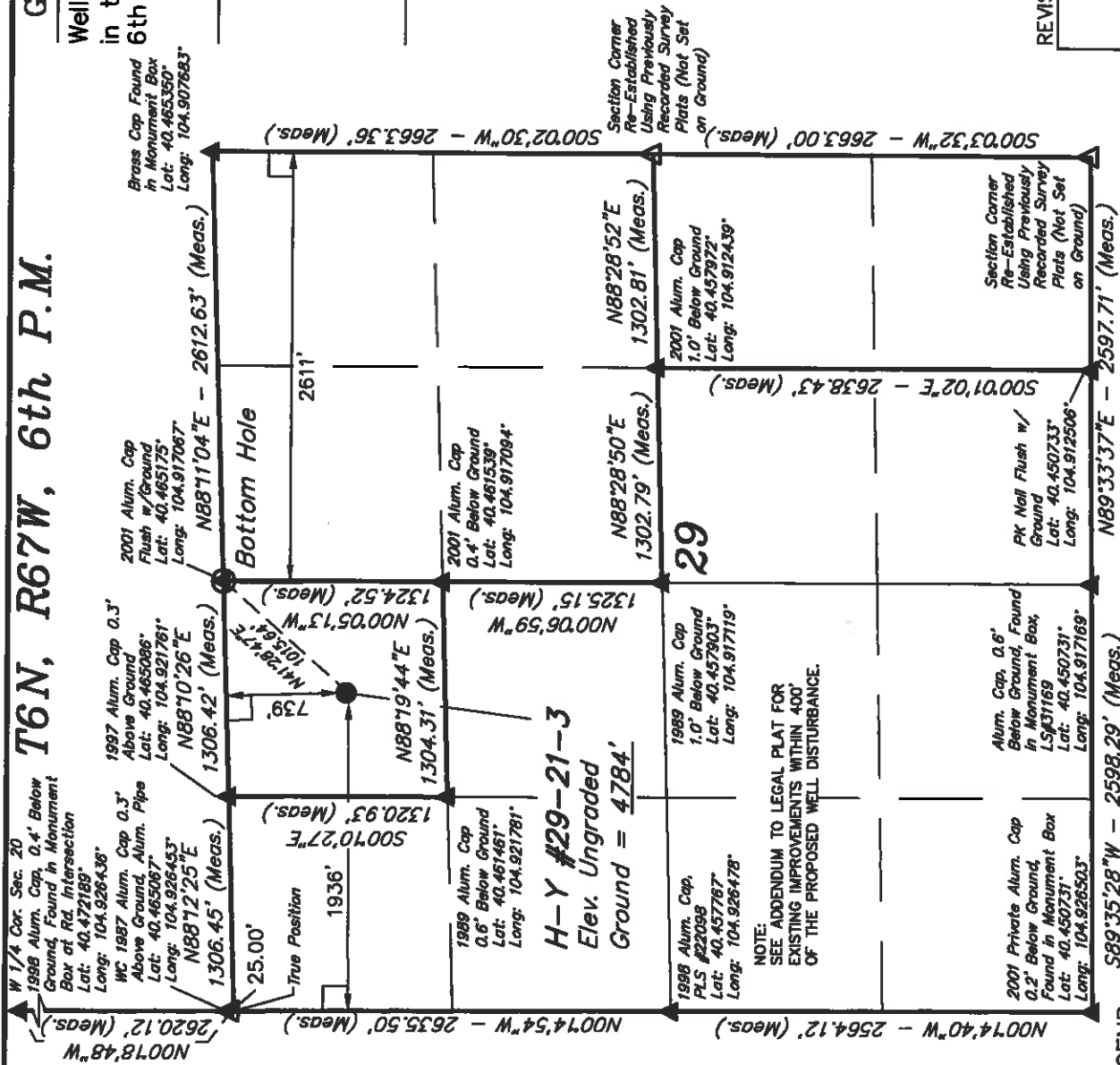
DATE SURVEYED:	DATE DRAWN:
----------------	-------------

## REFERENCES

	L.S.	A.J.	S.L.
1. 1900			

MER

**GREAT WESTERN OIL & GAS COMPANY**



**NOTE:**  
SEE ADDENDUM TO LEGAL PLAT FOR  
EXISTING IMPROVEMENTS WITHIN 400'  
OF THE PROPOSED WELL DISTURBANCE.

**LEGEND:**

**$\angle = 90^\circ$  SYMBOL**

● = PROPOSED WELL HEAD.

▲ = SECTION CORNERS LOCATED.

**$\Delta$  = SECTION CORNERS**

RE-ESTABLISHED.

NAD 83 (TARGET BOTTOM HOLE)		NAD 83 (SURFACE LOCATION)	
LATITUDE = 40°27'54.63"	(40.465175)	LATITUDE = 40°27'47.18"	(40.463100)
LONGITUDE = 104°55'01.44"	(104.917067)	LONGITUDE = 104°55'10.21"	(104.918503)
NAD 27 (TARGET BOTTOM HOLE)		NAD 27 (SURFACE LOCATION)	
LATITUDE = 40°27'54.69"	(40.485192)	LATITUDE = 40°27'47.22"	(40.483117)
LONGITUDE = 104°54'59.54"	(104.918539)	LONGITUDE = 104°55'08.30"	(104.918872)