

GREAT WESTERN OIL & GAS COMPANY

Well location, H-Y #20-24 (SURFACE LOCATION), located as shown in the NE 1/4 NW 1/4 of Section 29, T6N, R67W, 6th P.M., Weld County, Colorado.

BASIS OF ELEVATION

USGS COOPERATIVE BASE NETWORK CONTROL STATION,
DESIGNATION 'VERMILYEA'. NGS DATA SHEET LISTS THE
NAVD 88 ELEVATION AS BEING 5026 FEET

BASIS OF BEARINGS

BASIS OF BEARINGS IS A G.P.S. OBSERVATION.

LINE TABLE		
LINE	DIRECTION	LENGTH
L1	N01°34'53"E	1402.21'



CERTIFICATE

THIS IS TO CERTIFY THAT THE ABOVE PLAT WAS PREPARED FROM FIELD NOTES OF ACTUAL SURVEYS MADE BY ME OR UNDER MY SUPERVISION AND THAT THE SAME ARE TRUE AND CORRECT TO THE BEST OF MY KNOWLEDGE AND BELIEF.

REGISTERED LAND SURVEYOR
REGISTRATION NO. 17492
STATE OF COLORADO
09-16-12

UTAH ENGINEERING & LAND SURVEYING

85 SOUTH 200 EAST - VERNAL UTAH 84078

(435) 789-1017

SCALE	DATE SURVEYED:	DATE DRAWN:
1" = 1000'	02-07-12	02-10-12

PARTY	REFERENCES
L.S. A.J. S.L.	G.L.O. PLAT

WEATHER	FILE
COOL	GREAT WESTERN OIL & GAS COMPANY

PDOP = 2.2

NAD 83 (SURFACE LOCATION)
LATITUDE = 40°27'47.14" (40.463094)
LONGITUDE = 104°35'10.45" (104.918569)
NAD 27 (SURFACE LOCATION)
LATITUDE = 40°27'47.20" (40.463111)
LONGITUDE = 104°35'08.54" (104.919039)

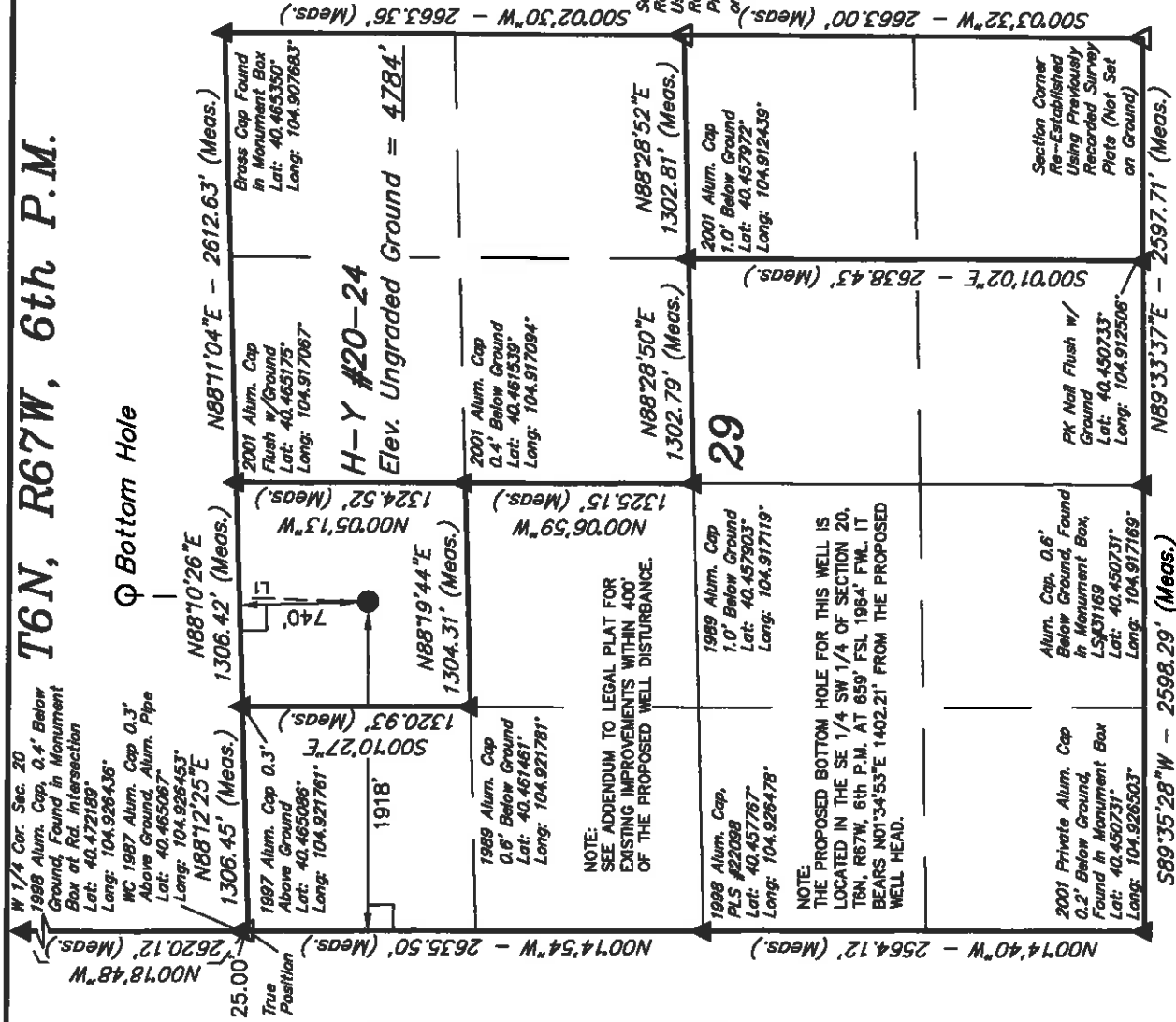
LEGEND:

L = 90° SYMBOL

● = PROPOSED WELL HEAD.

▲ = SECTION CORNERS LOCATED.

Δ = SECTION CORNERS RE-ESTABLISHED. (Not Set on Ground.)



T6N, R67W, 6th P.M.

GREAT WESTERN OIL & GAS COMPANY

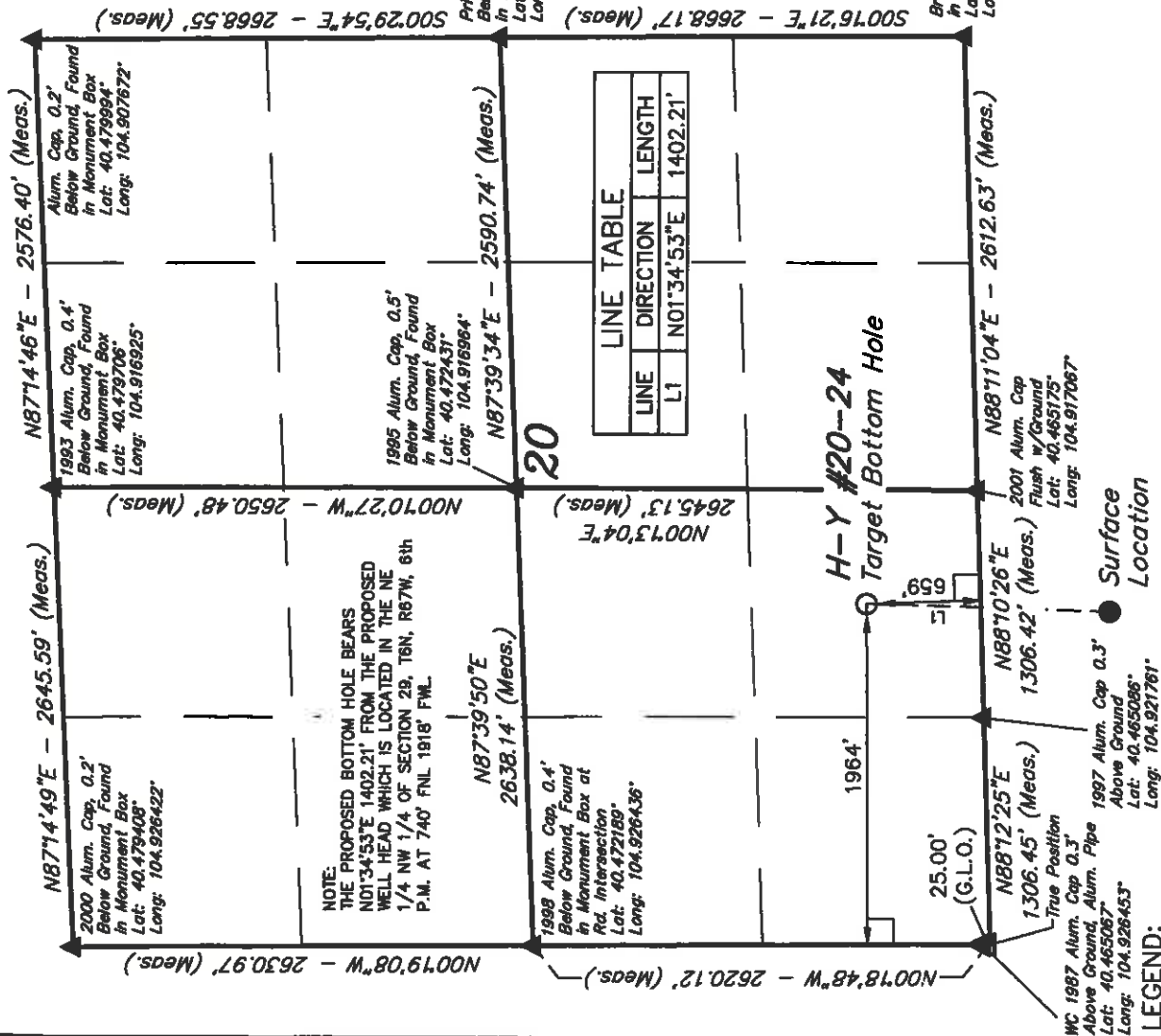
Well location, H-Y #20-24 (TARGET BOTTOM HOLE), located as shown in the SE 1/4 SW 1/4 of Section 20, T6N, R67W, 6th P.M., Weld County, Colorado.

BASIS OF ELEVATION

USGS COOPERATIVE BASE NETWORK CONTROL STATION, DESIGNATION 'VERMILYEA'. NGS DATA SHEET LISTS THE NAVD 88 ELEVATION AS BEING 5026 FEET

BASIS OF BEARINGS

BASIS OF BEARINGS IS A G.P.S. OBSERVATION.



LINE TABLE		
LINE	DIRECTION	LENGTH
L1	N01°34'53\"E	1402.21'



CERTIFICATE

THIS IS TO CERTIFY THAT THE ABOVE PLAT WAS PREPARED FROM FIELD NOTES OF ACTUAL SURVEYS MADE BY ME OR UNDER MY SUPERVISION AND THAT THE SAME ARE TRUE AND CORRECT TO THE BEST OF MY KNOWLEDGE AND BELIEF.

REGISTERED LAND SURVEYOR
REGISTRATION NO. 17462
STATE OF COLORADO 02-16-12

UINTAH ENGINEERING & LAND SURVEYING
85 SOUTH 200 EAST - VERNAL, UTAH 84078
(435) 789-1017

SCALE	1" = 1000'	DATE SURVEYED:	02-07-12	DATE DRAWN:	02-10-12
PARTY	L.S. A.J. S.L.	REFERENCES	G.L.O. PLAT		
WEATHER	COOL	FILE			
					GREAT WESTERN OIL & GAS COMPANY

NAD 83 (TARGET BOTTOM HOLE)	
LATITUDE = 40°28'00.98" (40.466939)	
LONGITUDE = 104°55'09.82" (104.919394)	
NAD 27 (TARGET BOTTOM HOLE)	
LATITUDE = 40°28'01.04" (40.466956)	
LONGITUDE = 104°55'07.92" (104.918867)	

- LEGEND:
- └ = 90° SYMBOL
 - = PROPOSED WELL HEAD.
 - ▲ = SECTION CORNERS LOCATED.
 - △ = SECTION CORNERS RE-ESTABLISHED. (Not Set on Ground.)