

# T6N, R67W, 6th P.M.

## GREAT WESTERN OIL & GAS COMPANY

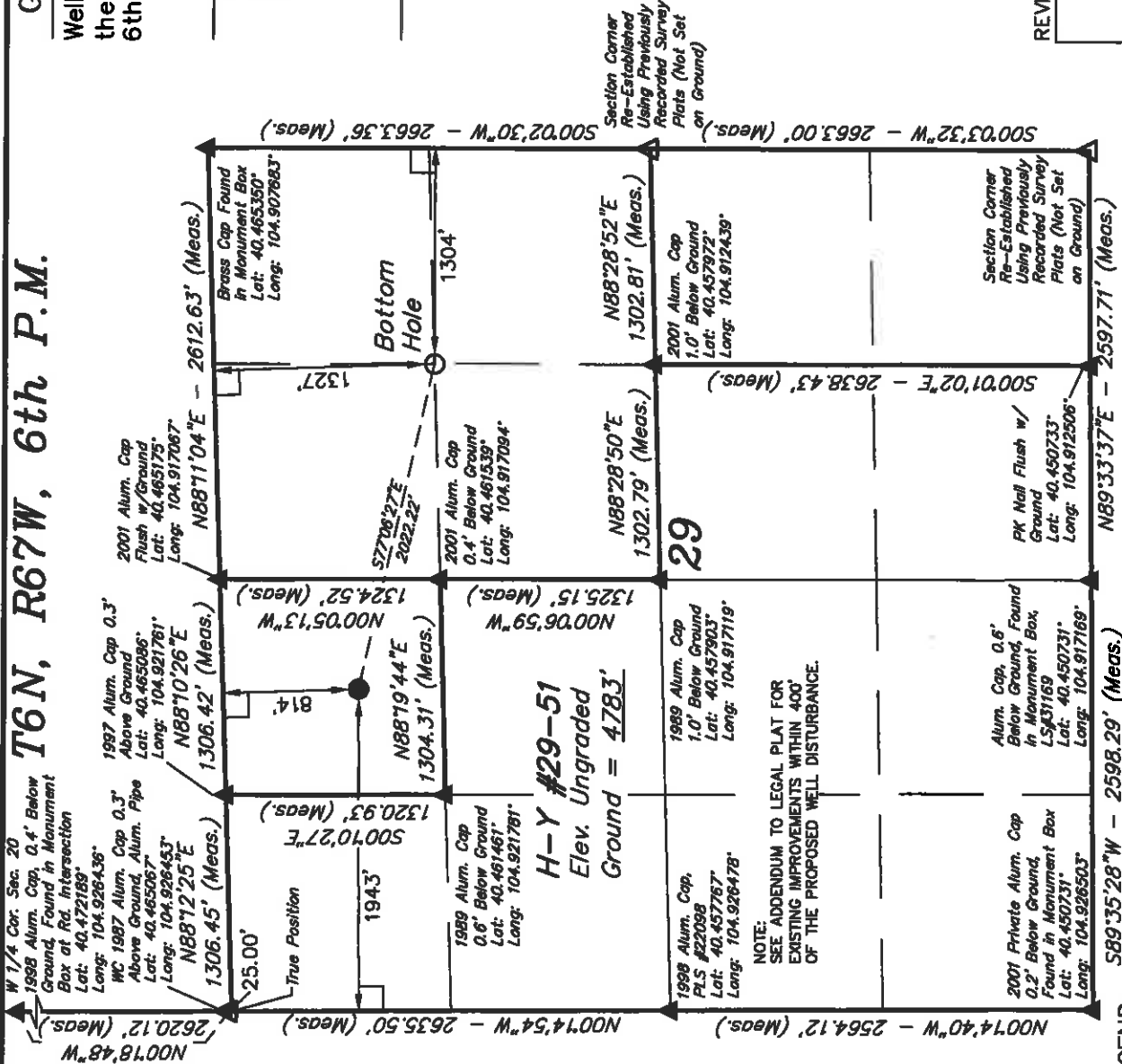
Well location, H-Y #29-51, located as shown in the NE 1/4 NW 1/4 of Section 29, T6N, R67W, 6th P.M., Weld County, Colorado.

### BASIS OF ELEVATION

USGS COOPERATIVE BASE NETWORK CONTROL STATION, DESIGNATION "VERMILYEA". NGS DATA SHEET LISTS THE NAVD 88 ELEVATION AS BEING 5026 FEET

### BASIS OF BEARINGS

BASIS OF BEARINGS IS A G.P.S. OBSERVATION.



### CERTIFICATE

THIS IS TO CERTIFY THAT THE ABOVE PLAT WAS PREPARED FROM FIELD NOTES OF ACTUAL SURVEYS MADE BY ME OR UNDER MY SUPERVISION AND THAT THE SAME ARE TRUE AND CORRECT TO THE BEST OF MY KNOWLEDGE AND BELIEF.

REGISTERED LAND SURVEYOR  
REGISTRATION NO. 17492  
STATE OF COLORADO 02-22-12

REVISED: 02-22-12

### UTAH ENGINEERING & LAND SURVEYING

85 SOUTH 200 EAST - VERNAL, UTAH 84078

(435) 789-1017

SCALE 1" = 1000'	DATE SURVEYED: 02-07-12	DATE DRAWN: 02-10-12
PARTY L.S. A.J. S.L.	REFERENCES G.L.O. PLAT	
WEATHER COOL	FILE	
		GREAT WESTERN OIL & GAS COMPANY

PDOP = 2.1

### LEGEND:

- = 90° SYMBOL
- = PROPOSED WELL HEAD.
- ▲ = SECTION CORNERS LOCATED.
- △ = SECTION CORNERS RE-ESTABLISHED.
- (Not Set on Ground.)

NAD 83 (TARGET BOTTOM HOLE)	NAD 83 (SURFACE LOCATION)
LATITUDE = 40°27'41.82" (40.461617)	LATITUDE = 40°27'46.42" (40.462894)
LONGITUDE = 104°54'44.67" (104.912408)	LONGITUDE = 104°55'10.12" (104.919478)
NAD 27 (TARGET BOTTOM HOLE)	NAD 27 (SURFACE LOCATION)
LATITUDE = 40°27'41.88" (40.461633)	LATITUDE = 40°27'46.48" (40.462911)
LONGITUDE = 104°54'42.77" (104.911881)	LONGITUDE = 104°55'08.21" (104.919847)

NOTE:  
SEE ADDENDUM TO LEGAL PLAT FOR  
EXISTING IMPROVEMENTS WITHIN 400'  
OF THE PROPOSED WELL DISTURBANCE.