

Well Name: **BEITMAN 04-01**

Well Config: VERTICAL - ORIGINAL HOLE, 3/12/2012 10:18:03 AM

Well Header

API	Business Unit		Spud Date		Well Configuration Type	
05-123-12472	WATTENBERG		6/25/1985		VERTICAL	
Orig KB Elev (ft)	KB - GL / ...	Quarter Quarter	Sec/Abs	Twn/Sur...	Range	P & A Date
4,833.00	12	SWSE	4	6N	66W	
Comment						
NIO REFRAC WOULD NOT RUN AFTER FRAC; CDL/NIO CMNGL'D						
Directions To Well						
WCR 31 & WCR 72 WEST 1/2 NORTH INTO . KEEP GATE CLOSED AT ALL TIMES.						
Current PBD (ftKB)						
ORIGINAL HOLE - 7390.0						
Bottom Hole Location						
North-South Distance (ft)		From N or S Line		East-West Distance (ft)		From E or W Line

PBDs

Date	Depth (ftKB)	Method	Comment
7/2/1985	7,402.0	TAG	STATE REPORT
3/2/2000	7,410.0	TAG	C/O TO 7410'

Wellbore Sections

Section	Size (in)	Act Top (ftKB)	Act Btm (ftKB)
SURFACE	12 1/4	12.0	315.0
PRODUCTION	7 7/8	315.0	7,490.0

Zone Statuses

Zone	Status Date	Status	Job
CODELL	8/14/1985	PR	DRILLING/COMPLETION - ORIGI...
NIOBRARA	8/14/1985	PR	DRILLING/COMPLETION - ORIGI...
CODELL	3/5/2000	PR	RE-FRAC, 2/18/2000 00:00
CODELL	7/13/2006	PR	TRI-FRAC, 7/7/2006 00:00
CODELL	11/15/2011	PR	RE-FRAC, 10/6/2011 08:00
NIOBRARA	11/15/2011	PR	RE-FRAC, 10/6/2011 08:00

Casing Strings

Casing Description	Run Date	String OD (in)	String Wt (lbs/ft)	String Grade	Top (ftKB)	Set Depth (ftKB)
Surface	6/26/1985	8 5/8	24.00		12.0	305.0
Production	7/4/1985	4 1/2	11.60	N-80	12.0	7,485.0

Cement

Description	Top (ftKB)	Btm (ftKB)
SURFACE CASING CEMENT	12.0	305.0
PRODUCTION CASING CEMENT	6,400.0	7,485.0

Tubing Components

Item Description	OD (in)	Wt (lbs/ft)	Grade	Jts	Len (ft)
Tubing Pup Joint	2 3/8	4.70	J-55	1	10.00
EUE 8rd Tubing	2 3/8	4.70	J-55	236	7,312.03
Seating Nipple	2 3/8	5.40	J-55	1	1.10

Perforation Data

Zone	Bnch/Stg	Entered Shot Total	Top (ftKB)	Btm (ftKB)	Date
NIOBRARA-CODE...		17	7,066.0	7,368.0	7/17/1985
NIOBRARA, ORIGI...	A	24	7,072.0	7,084.0	10/10/2011
NIOBRARA, ORIGI...	B	104	7,196.0	7,222.0	7/8/2006
NIOBRARA, ORIGI...	B	24	7,208.0	7,220.0	10/10/2011
CODELL, ORIGINA...		40	7,356.0	7,366.0	2/22/2000

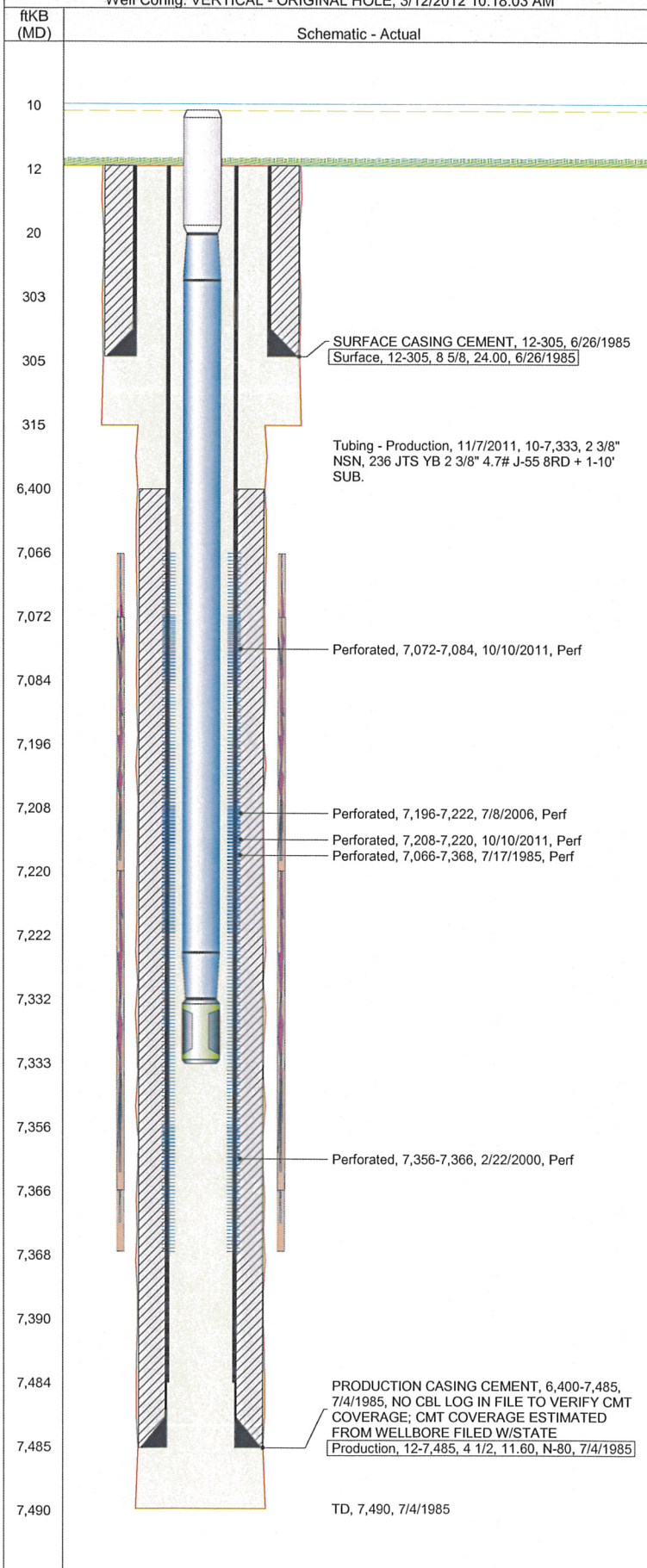
Stimulations & Treatments

Bnch/...	Date	Zone	Primary Job Type	
	7/26/1985	NIOBRARA-CODELL, ORIGINAL HOLE	DRILLING/COMPLETION - ORIGINAL	
Comment				
FRAC VI LTD ENTRY				
Total Add Amount		V (pumped) (gal)	V (slurry) (gal)	V (gas) (mcf)
Proppant 275000 lb; Proppant 100 MESH 15000 lb; Proppant INTERPROP 15000 lb			125992	
Avg Treat Pressure (psi)	Max Treat Pressure (psi)	Avg Treat Rate (bbl/min)	Max Treat Rate (bbl/min)	
5,000.0				

TD, 7,490, 7/4/1985				
---------------------	--	--	--	--

Well Name: BEITMAN 04-01

Well Config: VERTICAL - ORIGINAL HOLE, 3/12/2012 10:18:03 AM



Stimulations & Treatments

Bnch/...	Date	Zone	Primary Job Type
	2/22/2000	CODELL, ORIGINAL HOLE	RE-FRAC
Comment			
Total Add Amount		V (pumped) (gal)	V (slurry) (gal)
Proppant 261080 lb			119238
Avg Treat Pressure (psi)	5,695.0	Max Treat Pressure (psi)	Avg Treat Rate (bbl/min)
			14.20
Bnch/...	Date	Zone	Primary Job Type
	7/11/2006	NIOBRARA-CODELL, ORIGINAL HOLE	TRI-FRAC
Comment			
FRAC CDL & NIO B VIA LTD ENTRY			
Total Add Amount		V (pumped) (gal)	V (slurry) (gal)
Proppant 259795 lb			89830
Avg Treat Pressure (psi)	3,967.0	Max Treat Pressure (psi)	Avg Treat Rate (bbl/min)
			20.00
Bnch/...	Date	Zone	Primary Job Type
	11/1/2011	NIOBRARA-CODELL, ORIGINAL HOLE	RE-FRAC

Comment

INITIAL WHP - 85, LOAD - 90BBL, BREAK - 4112@3.6, RAN 50 BBL XLINK SLUG FOLLOWED WITH 50BBL XLINK/0.25# 40/70 SLUG DURING THE SLICKWATER PAD. STARTED WITH 0.5PPG INSTEAD OF 1.0PPG. RAISED GEL LOADING TO 20# ON SAND STAGES, FINAL ISIP - 3849, FINAL 5SIP - 3726, AVERAGE VISC - 20, AVERAGE PH - 10.40, AVERAGE TEMP - 67, NEVER ACHIEVED DESIGNED RATE, ALL PROP PUT AWAY.

Total Add Amount		V (pumped) (gal)	V (slurry) (gal)	V (gas) (mcf)
Proppant Ottawa 255136.505 lb		150989	162662	
Avg Treat Pressure (psi)	4,193.0	Max Treat Pressure (psi)	Avg Treat Rate (bbl/min)	Max Treat Rate (bbl/min)
		4,472.0	24.90	38.10

Other In Hole

Run Date	Description	OD (in)	Top (ftKB)	Btm (ftKB)

Logs

Date	Type	Top (ftKB)	Btm (ftKB)
7/2/1985	COMPENSATED DENSITY	3,700.0	7,398.0
7/2/1985	INDUCTION	300.0	7,398.0
7/2/1985	RESERVOIR ANALYSIS	6,900.0	7,400.0