

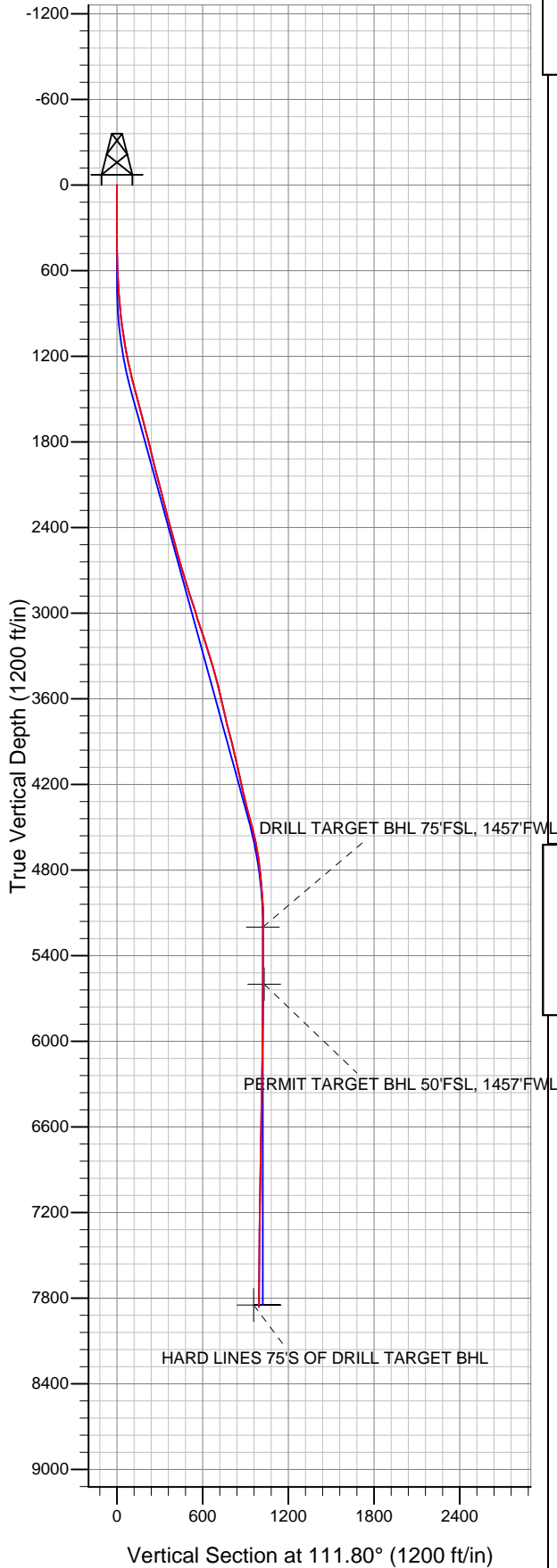
Well Name: **Martinson 2-8-24**

Surface Location: Martinson 0-6-24 Pad Sec.24-T4N-R66W  
 North American Datum 1983 US State Plane 1983 Colorado Northern Zone

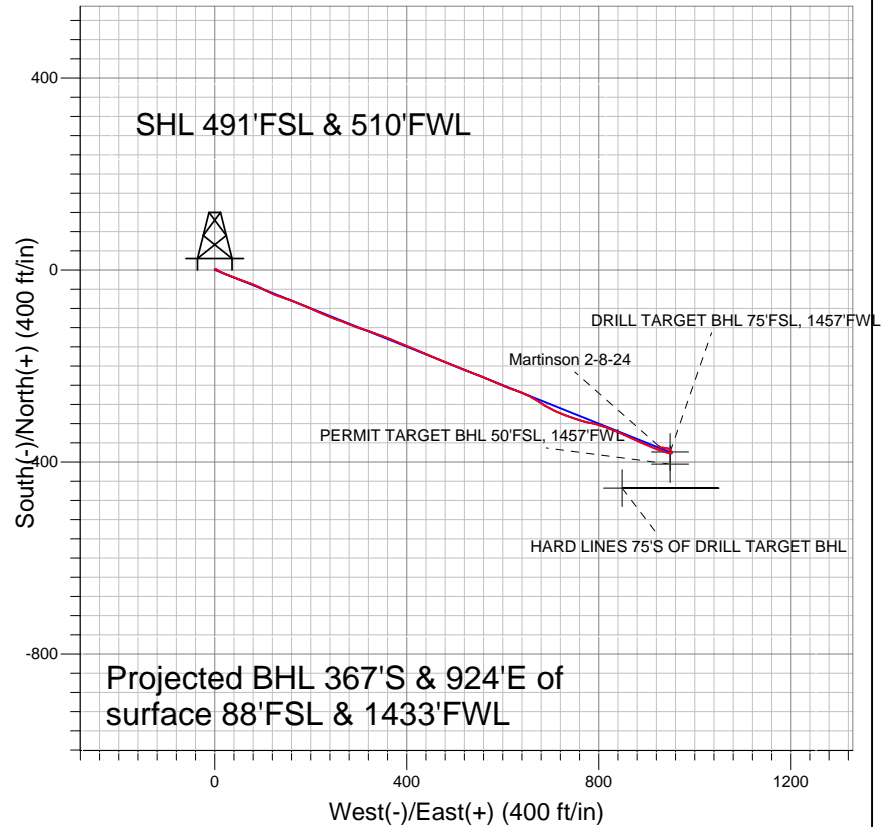
Ground Elevation: 4744.0

+N/-S	+E/-W	Northing	Easting	Latitude	Longitude	Slot
0.0	0.0	1349992.49	3213928.48	40.291590	-104.733100	

Original Well Elev WELL @ 4757.0ft (Original Well Elev)



## EnCana Oil & Gas Weld County CO



### LEGEND

- Martinson 2-8-24, Wellbore #1, Plan #1 (12-28-11) R V0
- Wellbore #1
- Survey #1

## Final Survey Plot

Projected Final Survey -  
 7987'MD & 7860'TVD @ 994'VS  
 0.5 deg Inc 299.3 deg AZ

Project: SEC.24-T4N-R66W  
 Site: Martinson 0-6-24 Pad Sec.24-T4N-R66W  
 Well: Martinson 2-8-24  
 Plan: Wellbore #1



## **Directional**

### **EnCana Oil & Gas Weld County CO**

**SEC.24-T4N-R66W**

**Martinson 0-6-24 Pad Sec.24-T4N-R66W**

**Martinson 2-8-24**

**Wellbore #1**

**Survey: Survey #1**

### **Standard Survey Report**

**09 January, 2012**



<b>Company:</b>	EnCana Oil & Gas Weld County CO	<b>Local Co-ordinate Reference:</b>	Well Martinson 2-8-24
<b>Project:</b>	SEC.24-T4N-R66W	<b>TVD Reference:</b>	WELL @ 4757.0ft (Original Well Elev)
<b>Site:</b>	Martinson 0-6-24 Pad Sec.24-T4N-R66W	<b>MD Reference:</b>	WELL @ 4757.0ft (Original Well Elev)
<b>Well:</b>	Martinson 2-8-24	<b>North Reference:</b>	True
<b>Wellbore:</b>	Wellbore #1	<b>Survey Calculation Method:</b>	Minimum Curvature
<b>Design:</b>	Wellbore #1	<b>Database:</b>	Landmark

Survey										
Measured Depth (ft)	Inclination (°)	Azimuth (°)	Vertical Depth (ft)	+N/-S (ft)	+E/-W (ft)	Vertical Section (ft)	Dogleg Rate (°/100ft)	Build Rate (°/100ft)	Turn Rate (°/100ft)	
1,204.0	10.50	109.10	1,199.6	-25.0	65.7	70.3	0.96	0.96	-0.32	
1,298.0	12.70	113.50	1,291.7	-31.9	83.3	89.1	2.52	2.34	4.68	
1,391.0	15.20	117.20	1,381.9	-41.5	103.5	111.5	2.85	2.69	3.98	
1,485.0	14.90	111.80	1,472.7	-51.6	125.7	135.9	1.52	-0.32	-5.74	
1,579.0	14.50	107.00	1,563.7	-59.6	148.1	159.7	1.36	-0.43	-5.11	
1,672.0	14.30	114.30	1,653.7	-67.7	169.7	182.7	1.96	-0.22	7.85	
1,766.0	15.00	113.40	1,744.7	-77.3	191.5	206.5	0.78	0.74	-0.96	
1,860.0	13.90	112.60	1,835.7	-86.5	213.1	230.0	1.19	-1.17	-0.85	
1,953.0	13.60	113.60	1,926.0	-95.2	233.4	252.1	0.41	-0.32	1.08	
2,047.0	14.20	109.30	2,017.3	-103.4	254.4	274.6	1.27	0.64	-4.57	
2,141.0	15.00	112.40	2,108.3	-111.8	276.5	298.3	1.19	0.85	3.30	
2,234.0	14.70	109.90	2,198.2	-120.4	298.8	322.1	0.76	-0.32	-2.69	
2,328.0	14.20	107.90	2,289.2	-128.0	321.0	345.6	0.75	-0.53	-2.13	
2,422.0	14.30	109.60	2,380.3	-135.5	342.9	368.7	0.46	0.11	1.81	
2,515.0	14.40	112.70	2,470.4	-143.8	364.4	391.7	0.83	0.11	3.33	
2,609.0	15.30	111.40	2,561.2	-152.8	386.7	415.8	1.02	0.96	-1.38	
2,703.0	17.20	113.20	2,651.5	-162.8	411.0	442.1	2.09	2.02	1.91	
2,796.0	17.10	113.40	2,740.4	-173.7	436.2	469.5	0.12	-0.11	0.22	
2,890.0	18.20	112.60	2,829.9	-184.8	462.4	498.0	1.20	1.17	-0.85	
2,984.0	17.40	112.10	2,919.4	-195.7	489.0	526.7	0.87	-0.85	-0.53	
3,077.0	16.30	111.60	3,008.4	-205.8	514.0	553.7	1.19	-1.18	-0.54	
3,171.0	18.50	110.80	3,098.1	-215.9	540.2	581.8	2.35	2.34	-0.85	
3,265.0	19.00	113.50	3,187.1	-227.3	568.2	612.0	1.07	0.53	2.87	
3,358.0	17.70	112.90	3,275.4	-238.9	595.1	641.3	1.41	-1.40	-0.65	
3,452.0	15.70	109.60	3,365.4	-248.7	620.3	668.3	2.35	-2.13	-3.51	
3,546.0	14.60	112.20	3,456.2	-257.4	643.2	692.8	1.38	-1.17	2.77	
3,639.0	14.70	120.60	3,546.2	-267.9	664.2	716.2	2.28	0.11	9.03	
3,733.0	12.60	123.50	3,637.5	-279.6	683.0	738.0	2.35	-2.23	3.09	
3,826.0	13.20	117.10	3,728.2	-290.0	701.0	758.5	1.67	0.65	-6.88	
3,920.0	14.60	111.50	3,819.4	-299.3	721.5	781.1	2.06	1.49	-5.96	
4,014.0	14.70	109.20	3,910.4	-307.5	743.8	804.8	0.63	0.11	-2.45	
4,107.0	13.10	107.20	4,000.6	-314.5	765.0	827.1	1.80	-1.72	-2.15	
4,201.0	12.00	99.30	4,092.4	-319.3	784.9	847.3	2.17	-1.17	-8.40	
4,295.0	12.50	107.00	4,184.3	-323.8	804.2	867.0	1.82	0.53	8.19	
4,388.0	14.00	114.10	4,274.8	-331.4	824.1	888.2	2.38	1.61	7.63	
4,482.0	13.90	114.30	4,366.0	-340.6	844.8	910.9	0.12	-0.11	0.21	
4,576.0	15.30	113.60	4,457.0	-350.3	866.4	934.6	1.50	1.49	-0.74	
4,669.0	13.50	113.80	4,547.0	-359.6	887.6	957.7	1.94	-1.94	0.22	
4,763.0	10.20	112.10	4,639.0	-367.1	905.4	977.0	3.53	-3.51	-1.81	
4,857.0	7.90	109.00	4,731.9	-372.3	919.2	991.7	2.50	-2.45	-3.30	
4,950.0	6.00	109.90	4,824.2	-376.1	929.8	1,003.0	2.05	-2.04	0.97	
5,044.0	4.50	110.80	4,917.8	-379.1	937.9	1,011.6	1.60	-1.60	0.96	
5,138.0	4.10	103.90	5,011.5	-381.2	944.6	1,018.6	0.69	-0.43	-7.34	
5,231.0	2.00	93.20	5,104.4	-382.1	949.4	1,023.4	2.33	-2.26	-11.51	
5,325.0	0.60	78.30	5,198.3	-382.1	951.6	1,025.4	1.52	-1.49	-15.85	
5,326.7	0.59	77.16	5,200.0	-382.1	951.6	1,025.4	0.83	-0.41	-68.72	
<b>DRILL TARGET BHL 75°FSL, 1457'FWL</b>										
5,419.0	0.70	5.50	5,292.3	-381.4	952.1	1,025.6	0.83	0.12	-77.60	
5,512.0	0.80	353.70	5,385.3	-380.2	952.1	1,025.2	0.20	0.11	-12.69	
5,606.0	0.50	345.50	5,479.3	-379.1	951.9	1,024.6	0.33	-0.32	-8.72	
5,700.0	0.70	334.70	5,573.3	-378.2	951.6	1,024.0	0.24	0.21	-11.49	
5,726.5	0.69	328.13	5,599.8	-377.9	951.4	1,023.7	0.30	-0.04	-24.84	
<b>PERMIT TARGET BHL 50°FSL, 1457'FWL</b>										
5,793.0	0.70	311.40	5,666.3	-377.3	950.9	1,023.0	0.30	0.02	-25.14	

<b>Company:</b>	EnCana Oil & Gas Weld County CO	<b>Local Co-ordinate Reference:</b>	Well Martinson 2-8-24
<b>Project:</b>	SEC.24-T4N-R66W	<b>TVD Reference:</b>	WELL @ 4757.0ft (Original Well Elev)
<b>Site:</b>	Martinson 0-6-24 Pad Sec.24-T4N-R66W	<b>MD Reference:</b>	WELL @ 4757.0ft (Original Well Elev)
<b>Well:</b>	Martinson 2-8-24	<b>North Reference:</b>	True
<b>Wellbore:</b>	Wellbore #1	<b>Survey Calculation Method:</b>	Minimum Curvature
<b>Design:</b>	Wellbore #1	<b>Database:</b>	Landmark

Survey									
Measured Depth (ft)	Inclination (°)	Azimuth (°)	Vertical Depth (ft)	+N/-S (ft)	+E/-W (ft)	Vertical Section (ft)	Dogleg Rate (°/100ft)	Build Rate (°/100ft)	Turn Rate (°/100ft)
5,887.0	0.70	328.80	5,760.3	-376.5	950.2	1,022.0	0.23	0.00	18.51
5,981.0	0.80	307.30	5,854.3	-375.6	949.3	1,020.9	0.32	0.11	-22.87
6,074.0	0.70	316.30	5,947.3	-374.8	948.4	1,019.8	0.17	-0.11	9.68
6,168.0	1.00	306.40	6,041.3	-373.9	947.4	1,018.5	0.35	0.32	-10.53
6,262.0	0.80	308.80	6,135.3	-373.0	946.2	1,017.0	0.22	-0.21	2.55
6,355.0	1.10	288.60	6,228.3	-372.3	944.9	1,015.5	0.48	0.32	-21.72
6,449.0	1.10	276.10	6,322.2	-371.9	943.1	1,013.8	0.25	0.00	-13.30
6,543.0	1.10	281.00	6,416.2	-371.6	941.3	1,012.0	0.10	0.00	5.21
6,638.0	1.10	280.50	6,511.2	-371.3	939.5	1,010.2	0.01	0.00	-0.53
6,732.0	0.80	275.40	6,605.2	-371.1	938.0	1,008.7	0.33	-0.32	-5.43
6,826.0	0.90	285.90	6,699.2	-370.8	936.6	1,007.3	0.20	0.11	11.17
6,920.0	0.80	278.30	6,793.2	-370.5	935.3	1,006.0	0.16	-0.11	-8.09
7,015.0	1.10	276.50	6,888.2	-370.3	933.7	1,004.4	0.32	0.32	-1.89
7,109.0	0.80	265.40	6,982.1	-370.2	932.2	1,003.0	0.37	-0.32	-11.81
7,203.0	0.80	251.60	7,076.1	-370.5	930.9	1,001.9	0.20	0.00	-14.68
7,298.0	0.50	295.70	7,171.1	-370.5	929.9	1,001.0	0.59	-0.32	46.42
7,392.0	0.70	306.70	7,265.1	-370.0	929.0	1,000.0	0.24	0.21	11.70
7,486.0	0.80	298.20	7,359.1	-369.4	928.0	998.8	0.16	0.11	-9.04
7,580.0	0.80	305.90	7,453.1	-368.7	926.9	997.5	0.11	0.00	8.19
7,675.0	0.60	302.00	7,548.1	-368.0	925.9	996.4	0.22	-0.21	-4.11
7,769.0	0.30	302.20	7,642.1	-367.6	925.3	995.7	0.32	-0.32	0.21
7,863.0	0.40	340.60	7,736.1	-367.2	925.0	995.2	0.26	0.11	40.85
7,942.0	0.50	299.30	7,815.1	-366.7	924.6	994.7	0.42	0.13	-52.28
7,974.1	0.50	299.30	7,847.2	-366.6	924.4	994.4	0.00	0.00	0.00
<b>HARD LINES 75'S OF DRILL TARGET BHL</b>									
7,987.0	0.50	299.30	7,860.1	-366.6	924.3	994.3	0.00	0.00	0.00

Checked By: \_\_\_\_\_ Approved By: \_\_\_\_\_ Date: \_\_\_\_\_