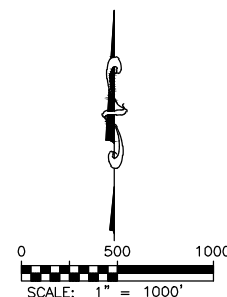
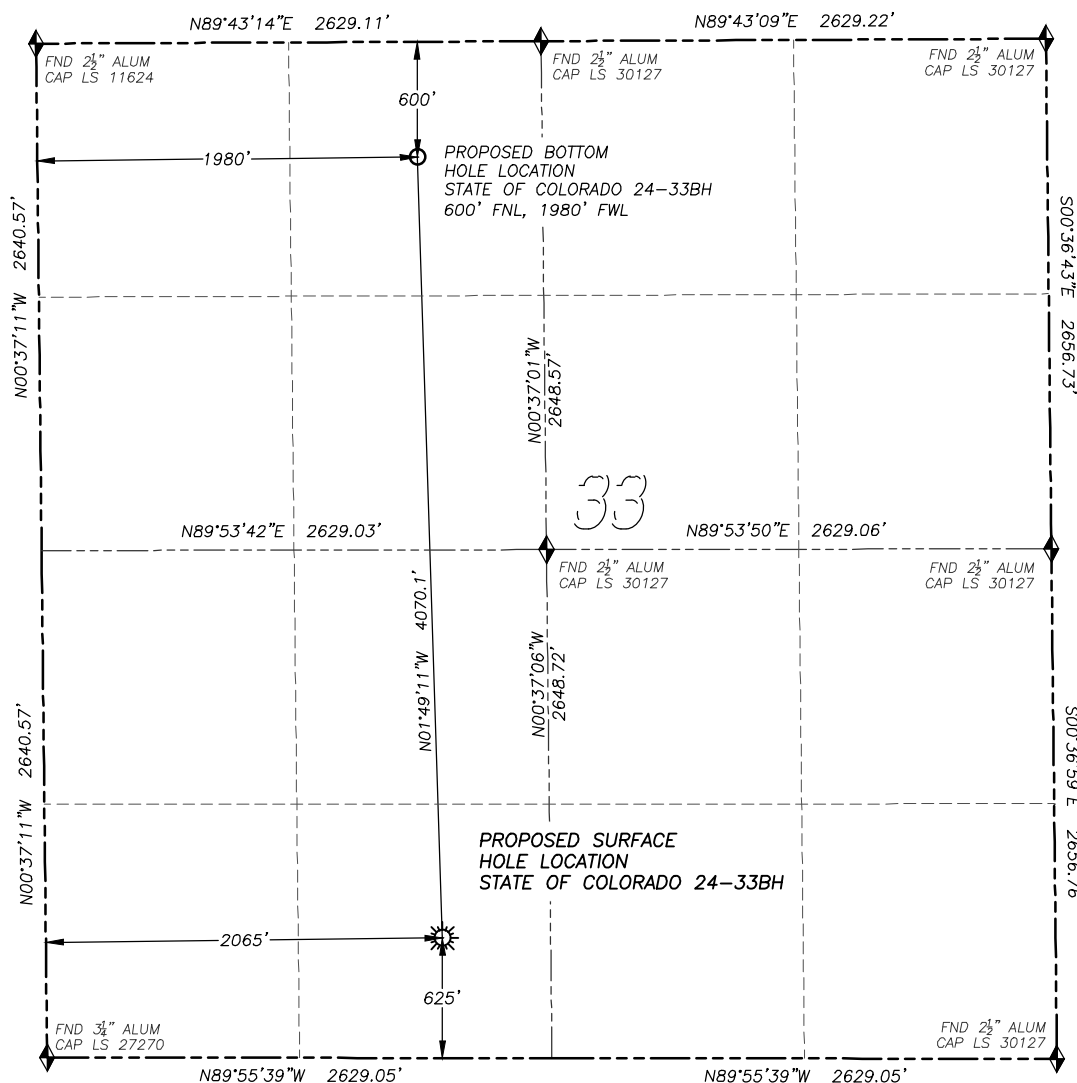


WELL LOCATION CERTIFICATE STATE OF COLORADO 24-33BH

SECTION 33, TOWNSHIP 14 SOUTH, RANGE 63 WEST OF THE 6TH PRINCIPAL MERIDIAN

**LEGEND**

- ◆ FOUND MONUMENT AS DESCRIBED
- ☼ PROPOSED WELL
- ⊙ EXISTING WELL
- BOTTOM HOLE
- ⊗ ABANDONED WELL

NAD 83 LATITUDE AND LONGITUDE**STATE OF COLORADO 24-33BH
SURFACE HOLE:**

LATITUDE: N38.78246°
 LONGITUDE: W104.45310°
 ELEVATION: 5918'
 FOOTAGE: 625' FNL, 2065' FWL
 PDOP: 1.2
 QTR/QTR: SE4/SW4
 PROP LINE: 625' NORTH
 GPS OPERATOR: K. DALEY

BOTTOM HOLE:

LATITUDE: N38.79363°
 LONGITUDE: W104.45355°
 FOOTAGE: 600' FNL, 1980' FWL

IN ACCORDANCE WITH A REQUEST FROM HILCORP ENERGY COMPANY, DALEY LAND SURVEYING, INC. HAS DETERMINED THE SURFACE LOCATION OF THE **STATE OF COLORADO 24-33BH** WELL TO BE 625' FSL, 2065' FWL, AS MEASURED AT NINETY (90) DEGREES FROM THE SECTION LINES OF SECTION 33, TOWNSHIP 14 SOUTH, RANGE 63 WEST OF THE 6TH PRINCIPAL MERIDIAN, EL PASO, COLORADO. THE BOTTOM HOLE LOCATION, PROVIDED BY THE CLIENT, IS TO BE 600' FNL, 1980' FWL.

I HEREBY CERTIFY THAT THIS WELL LOCATION CERTIFICATE WAS PREPARED BY ME OR UNDER MY DIRECT SUPERVISION, THAT THE WORK WAS COMPLETED ON 3/3/2012 FOR AND ON BEHALF OF HILCORP ENERGY COMPANY, AND THAT THIS MAP DOES NOT REPRESENT A BOUNDARY SURVEY, IT IS NOT A LAND SURVEY PLAT OR AN IMPROVEMENT SURVEY PLAT AND IT IS NOT TO BE RELIED UPON FOR THE ESTABLISHMENT OF FENCE, BUILDING OR OTHER FUTURE IMPROVEMENT LINES.

NOTES:

- 1) BEARINGS FOR THIS MAP ARE ASSUMED AND BASED UPON GPS OBSERVATIONS MADE BETWEEN MONUMENTS LOCATED AT THE SOUTHWEST CORNER AND NORTHWEST CORNER OF SECTION 33, T.14S., R.63W.
- 2) HORIZONTAL DATUM IS NAD83.
- 3) VERTICAL DATUM IS NAVD88 AND ORIGINATES FROM THE LOCAL C.O.R.S. NETWORK, UTILIZING THE GEOID09 MODEL.
- 4) SEE LOCATION DRAWING FOR VISIBLE IMPROVEMENTS WITHIN 400' OF PROPOSED DISTURBED AREA.
- 5) SURFACE USE: PASTURE.

NOTICE: According to Colorado law you MUST commence any legal action based upon any defect in this W.L.C. within three years after you first discover such defect. In no event may any action based upon any such defect in this W.L.C. be commenced more than ten years from the date of the certification shown hereon.

FOR AND ON BEHALF OF
DALEY LAND SURVEYING INC.,
Robert Daley, PLS 35597

