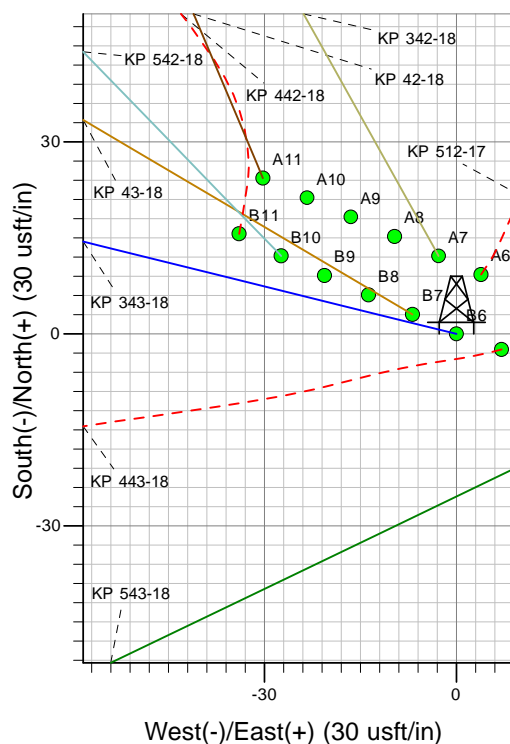
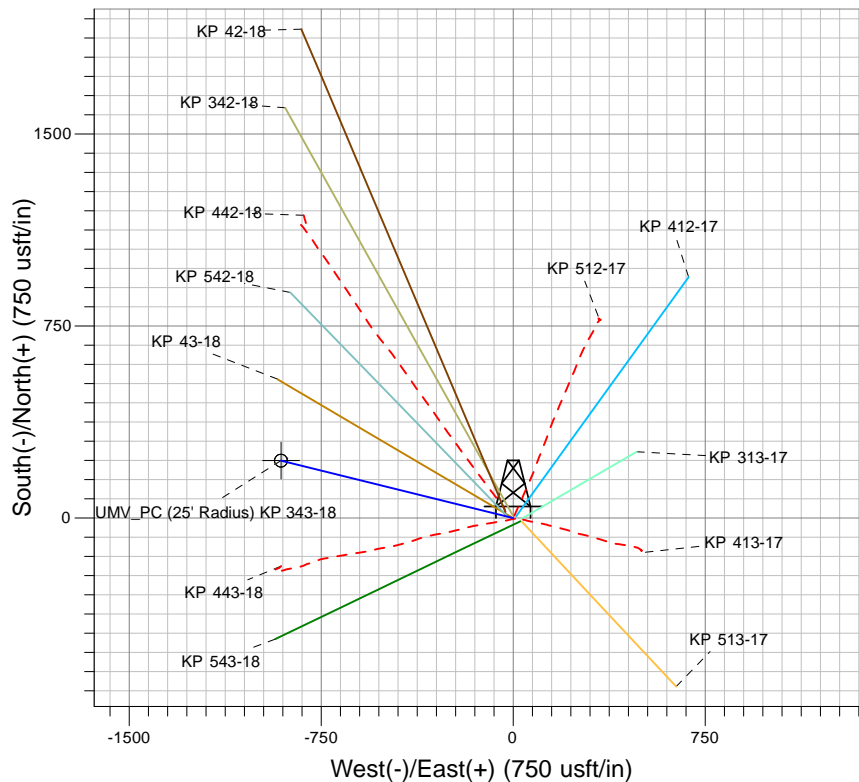
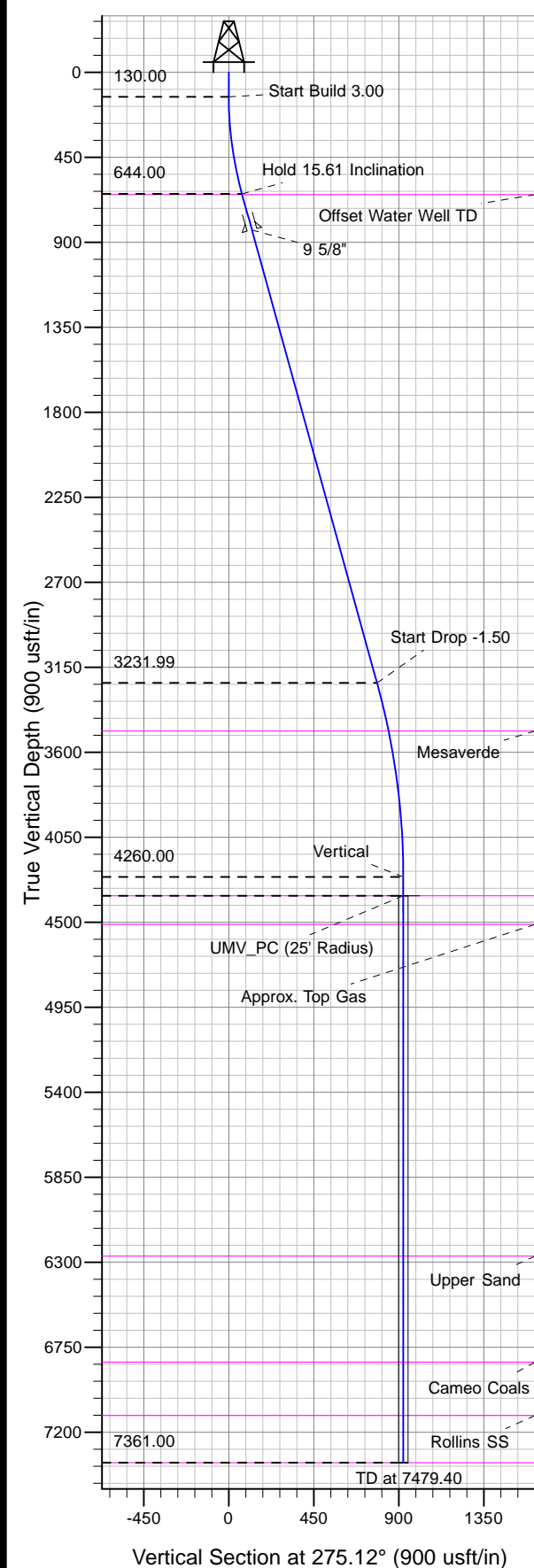




Well Name: KP 343-18
Surface Location: KP 13-17 Pad
North American Datum 1983 , US State Plane 1983, Colorado Central Zone
Ground Elevation: 6202.00

+N/-S	+E/-W	Northing	Easting	Latitude	Longitude	Slot
0.00	0.00	1623232.69	2411330.11	39° 31' 33.564 N	107° 35' 13.458 W	B6

KELLY BUSHING @ 6228.00usft (Nabors 573)



Project: Sec. 17-T6S-R91W
Site: KP 13-17 Pad
Well: KP 343-18
Design #1 07Jun10 kjs



Azimuths to True North
Magnetic North: 10.30°
Magnetic Field
Strength: 52421.6snT
Dip Angle: 65.87°
Date: 6/7/2010
Model: IGRF2010

ANNOTATIONS

MD	Inc	Azi	TVD	+N/-S	+E/-W	Vsect	Departure	Annotation
130.00	0.00	0.00	130.00	0.00	0.00	0.00	0.00	Start Build 3.00
650.42	15.61	283.88	644.00	16.91	-68.41	69.64	70.47	Hold 15.61 Inclination
3337.55	15.61	283.88	3231.99	190.41	-770.48	784.39	793.66	Start Drop -1.50
4378.40	0.00	0.00	4260.00	224.23	-907.30	923.68	934.60	Vertical
4478.40	0.00	0.00	4360.00	224.23	-907.30	923.68	934.60	UMV_PC
7479.40	0.00	0.00	7361.00	224.23	-907.30	923.68	934.60	TD at 7479.40