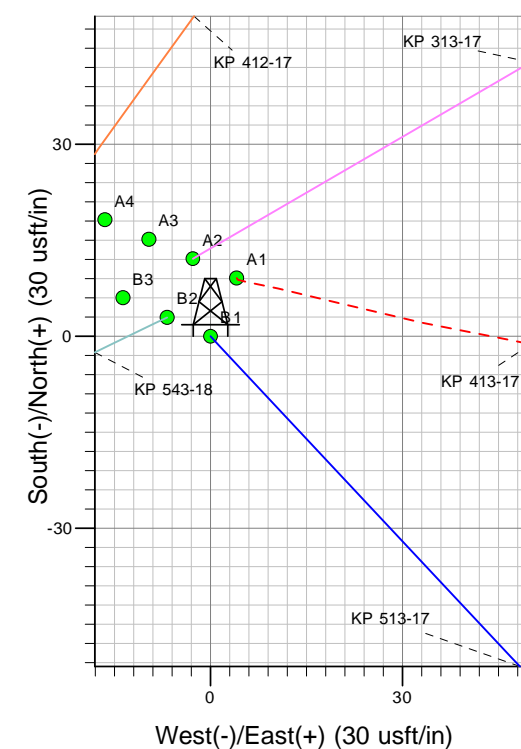
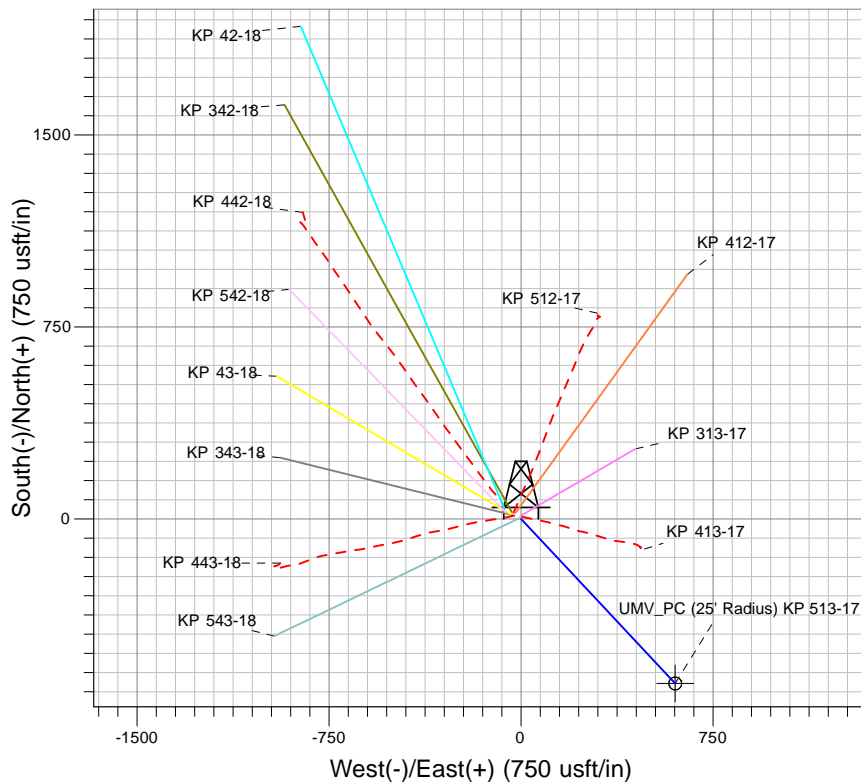
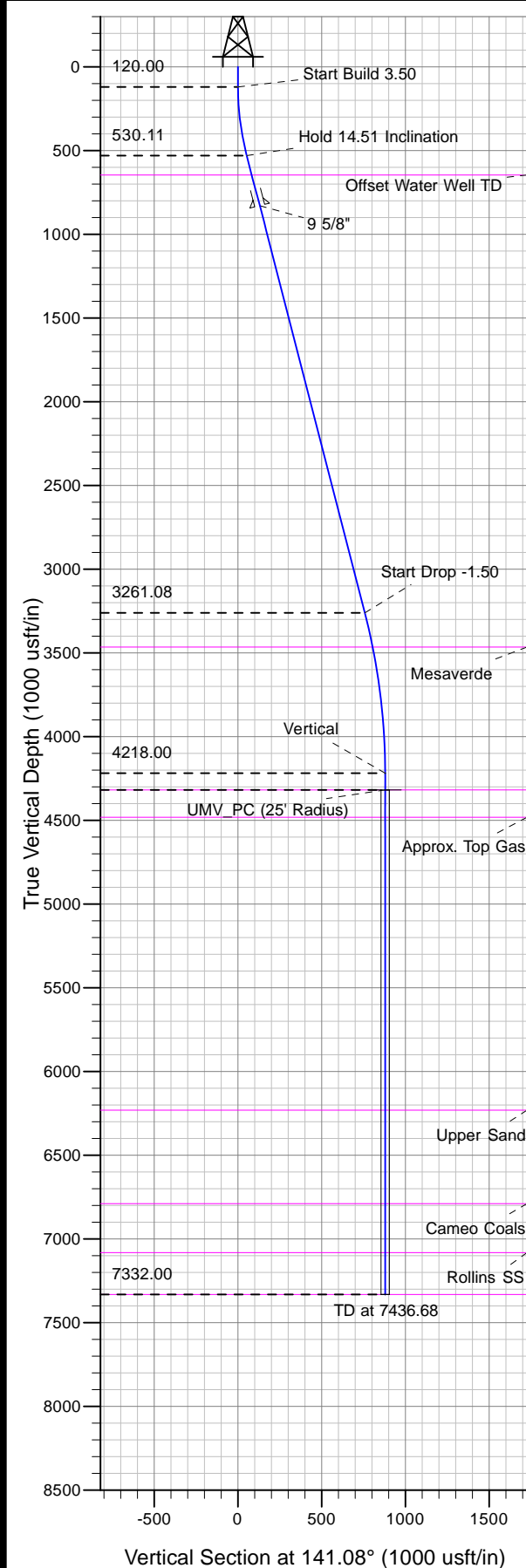




Well Name: KP 513-17
Surface Location: KP 13-17 Pad
North American Datum 1983 , US State Plane 1983, Colorado Central Zone
Ground Elevation: 6202.00

+N/-S	+E/-W	Northing	Easting	Latitude	Longitude	Slot
0.00	0.00	1623216.79	2411364.01	39° 31' 33.415 N	107° 35' 13.021 W	B 1

KELLY BUSHING @ 6228.00usft (Nabors 573)



Project: Sec. 17-T6S-R91W
Site: KP 13-17 Pad
Well: KP 513-17
Design #1 07Jun10 kjs

Azimuths to True North
Magnetic North: 10.30°
Magnetic Field
Strength: 52421.6snT
Dip Angle: 65.87°
Date: 6/7/2010
Model: IGRF2010

ANNOTATIONS

MD	Inc	Azi	TVD	+N/-S	+E/-W	Vsect	Departure	Annotation
120.00	0.00	0.00	120.00	0.00	0.00	0.00	0.00	Start Build 3.50
534.52	14.51	136.88	530.11	-38.10	35.68	52.06	52.20	Hold 14.51 Inclination
3355.45	14.51	136.88	3261.08	-553.92	518.75	756.87	758.91	Start Drop -1.50
4322.68	0.00	0.00	4218.00	-642.83	602.01	878.35	880.71	Vertical
4422.68	0.00	0.00	4318.00	-642.83	602.01	878.35	880.71	UMV_PC
7436.68	0.00	0.00	7332.00	-642.83	602.01	878.35	880.71	TD at 7436.68