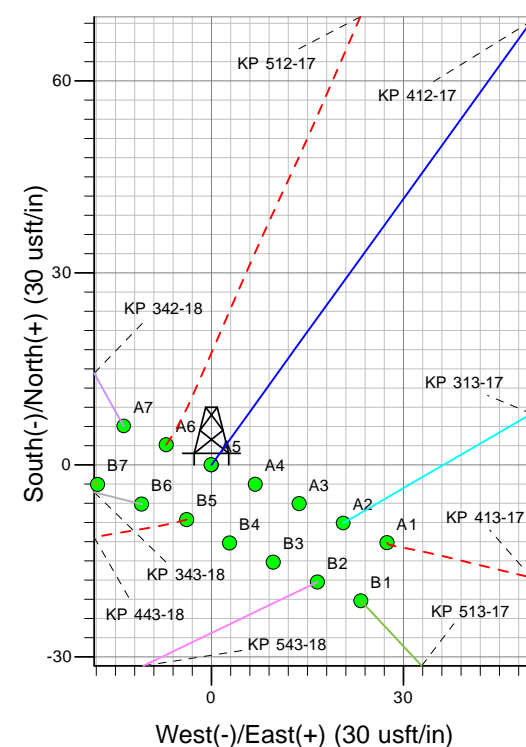
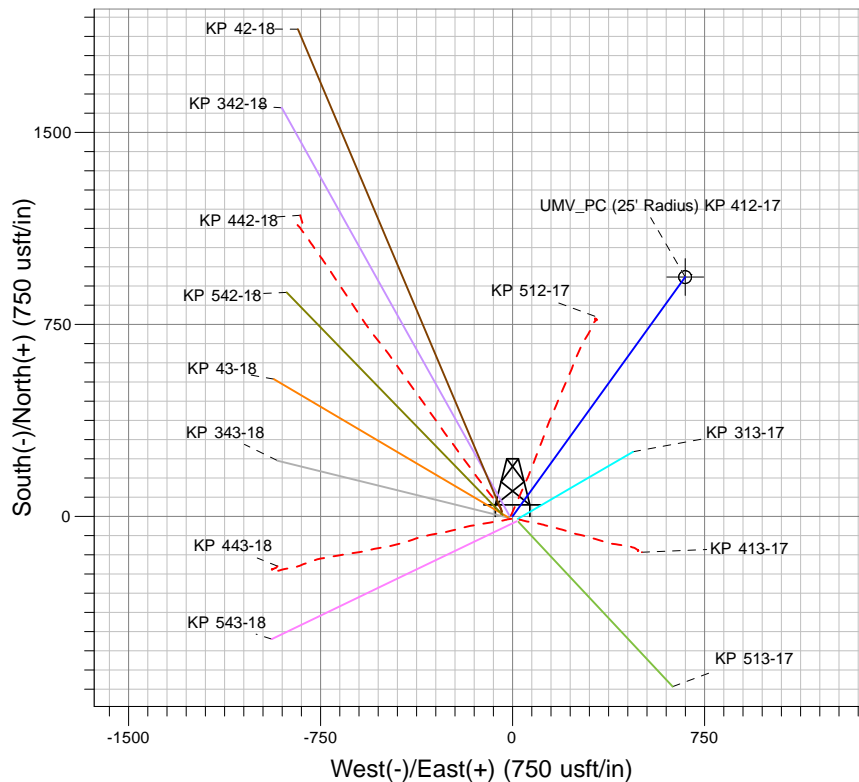
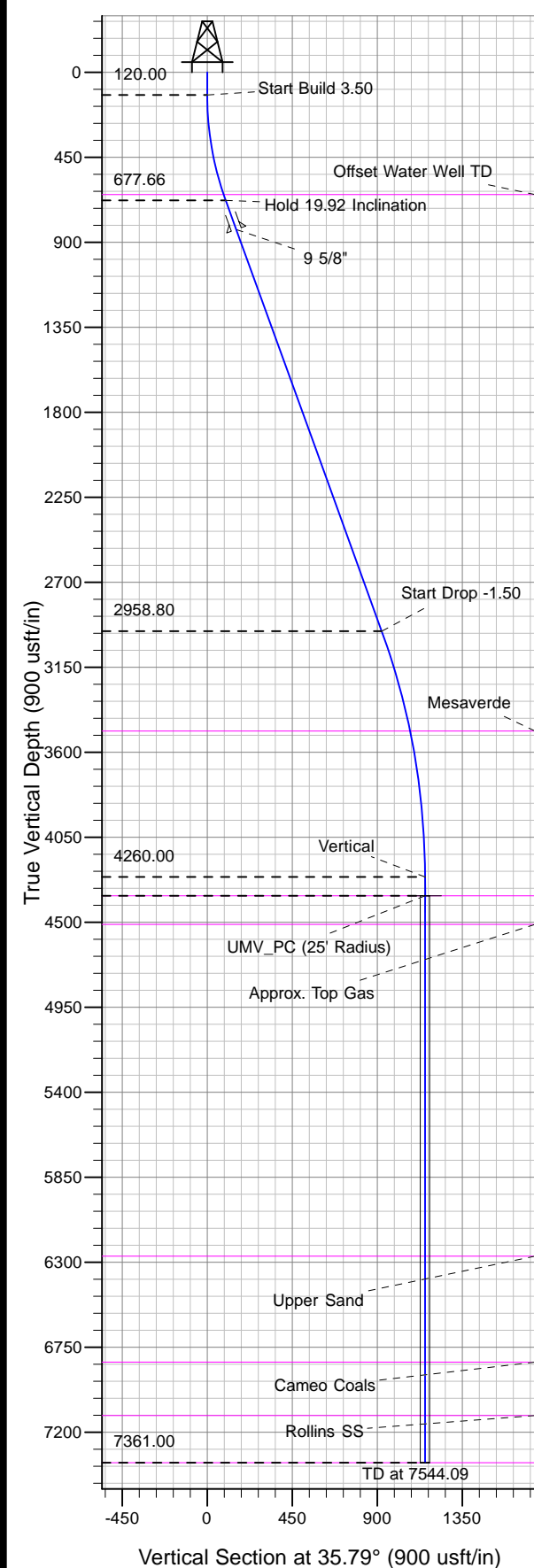




Well Name: KP 412-17
Surface Location: KP 13-17 Pad
North American Datum 1983 , US State Plane 1983, Colorado Central Zone
Ground Elevation: 6202.00
+N/-S 0.00 +E/-W 0.00 Northing 1623238.56 Easting 2411341.16 Latitude 39° 31' 33.625 N Longitude 107° 35' 13.319 W Slot A5
KELLY BUSHING @ 6228.00usft (Nabors 573)



Project: Sec. 17-T6S-R91W
Site: KP 13-17 Pad
Well: KP 412-17
Design #1 07Jun10 kjs

Azimuths to True North
Magnetic North: 10.30°
Magnetic Field
Strength: 52421.6snT
Dip Angle: 65.87°
Date: 6/7/2010
Model: IGRF2010

ANNOTATIONS

MD	Inc	Azi	TVD	+N/-S	+E/-W	Vsect	Departure	Annotation
120.00	0.00	0.00	120.00	0.00	0.00	0.00	0.00	Start Build 3.50
689.05	19.92	35.79	677.66	79.42	57.26	97.91	97.91	Hold 19.92 Inclination
3115.31	19.92	35.79	2958.80	749.86	540.62	924.42	924.42	Start Drop -1.50
4443.09	0.00	0.00	4260.00	935.18	674.23	1152.89	1152.89	Vertical
4543.09	0.00	0.00	4360.00	935.18	674.23	1152.89	1152.89	UMV_PC
7544.09	0.00	0.00	7361.00	935.18	674.23	1152.89	1152.89	TD at 7544.09