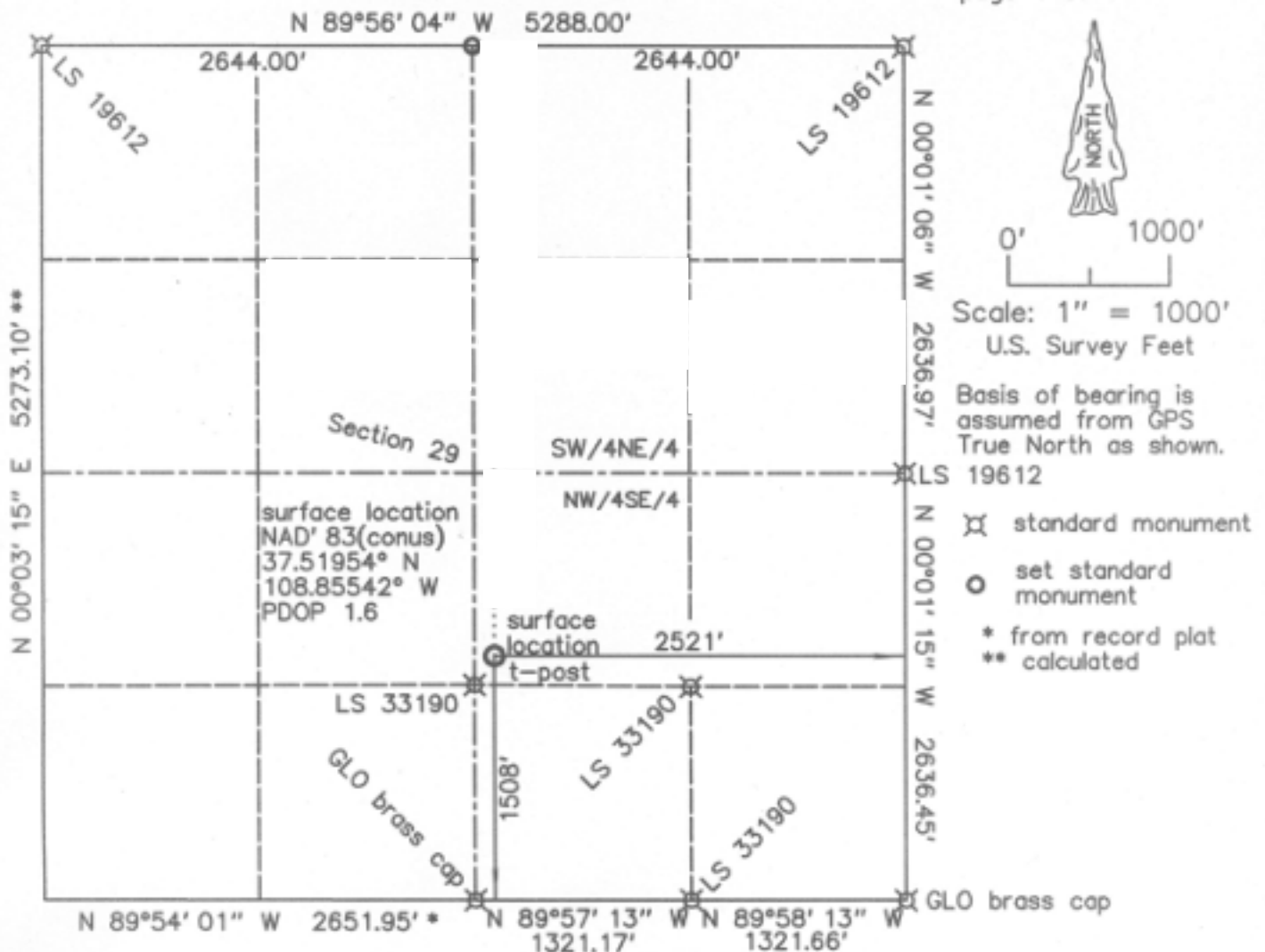


VERTICAL PILOT WELL LOCATION

WELL LOCATION PLAT

page 1 of 1



KINDER MORGAN CO2 COMPANY, LP
 HA-4
 1508' FSL & 2521' FEL (surface location)
 Section 29, T.38 N., R.18 W., NMPM
 Montezuma County, CO
 6708' grd. el. NAVD '88 (from OPUS)
 1767' FNL & 2521' FEL (bottom hole)
 Section 29, T.38 N., R.18 W., NMPM
 Montezuma County, CO

Notes:

- 1) Distances/dimensions are perpendicular to section/aliquot lines.
- 2) Surface use is Fee dry land CRP.
- 3) GPS was corrected with OPUS, GPS operator was R.J. Caffey, CO LS 36562.
- 4) There are no improvements within 400 plus feet.
- 5) There is a property line 180 feet to the south.

date of survey : 10/17/2011
 date of plat : 10/21/2011
 rev. 02/05/2012



KNOW ALL MEN BY THESE PRESENTS that I, GERALD G. HUDDLESTON, do hereby certify that this plat was prepared from field notes of an actual survey made by me or under my supervision and that the same is true and accurate to the best of my knowledge and belief.