

From: [Prince, Nancy](#)
To: [Yokley, Bill](#)
Subject: FW: Ultra El Paso County locations
Date: Thursday, March 08, 2012 4:31:14 PM
Attachments: [image001.png](#)

Nancy K. Prince

303-894-2100 X5103
Permit/Completion Technician
Colorado Oil and Gas Conservation Commission

From: Prince, Nancy
Sent: Thursday, March 08, 2012 8:41 AM
To: 'Debbie Ghani'
Subject: FW: Ultra El Paso County locations

Nancy K. Prince

303-894-2100 X5103
Permit/Completion Technician
Colorado Oil and Gas Conservation Commission

From: Smeins, Melissa J [<mailto:msmeins@blm.gov>]
Sent: Monday, March 05, 2012 7:13 AM
To: Prince, Nancy
Cc: Dickerson, Jimmy W; Hendricks, Marvin L.; Larson, Joan L; Debbie Ghani; Sutphin, Dirk; Stanczyk, Jane
Subject: RE: Ultra El Paso County locations

Thank you!

Melissa Smeins-Geologist
Bureau of Land Management
Royal Gorge Field Office
3028 E. Main Street
Canon City, CO 81212

719.269.8523 Phone
msmeins@blm.gov
<http://www.handsontheland.org/garden-park/>

From: Prince, Nancy [<mailto:Nancy.Prince@state.co.us>]
Sent: Thursday, March 01, 2012 4:14 PM
To: Smeins, Melissa J
Cc: Dickerson, Jimmy W; Hendricks, Marvin L.; Larson, Joan L; Debbie Ghani; Sutphin, Dirk; Stanczyk, Jane
Subject: FW: Ultra El Paso County locations

Melissa,

See below for COGCC's response to your question about protection of coals at the Ultra Ponderosa locations. It appears that the proposed casing program meets BLMs goals. Please let me know if you have any questions or concerns.

Thanks,

Nancy K. Prince

303-894-2100 X5103
Permit/Completion Technician
Colorado Oil and Gas Conservation Commission

From: Sutphin, Dirk
Sent: Thursday, March 01, 2012 4:04 PM
To: Prince, Nancy
Subject: RE: Ultra El Paso County locations

Nancy,

We require surface casing at least 50' below base of Fox Hills (bFH), ie. 50' below top of Pierre Shale.

At PONDEROSA 41-17 1H bFH is 5188' amsl (1311' bgs).

At PONDEROSA 41-17 3H bFH is 5189' amsl (1308' bgs).

The operator proposes 1400' at both.

At the PONDEROSA 41-17 1V, API# 041-06067, approved F2# 400244338 the depths are (5179' amsl, 1326' bgs, 1400' surface casing proposed).

Since the coals are in the Laramie Fm the coals will be covered by the surface casing in all 3 wells.

Dirk Sutphin, P.E.

COGCC, NE Area Engineer

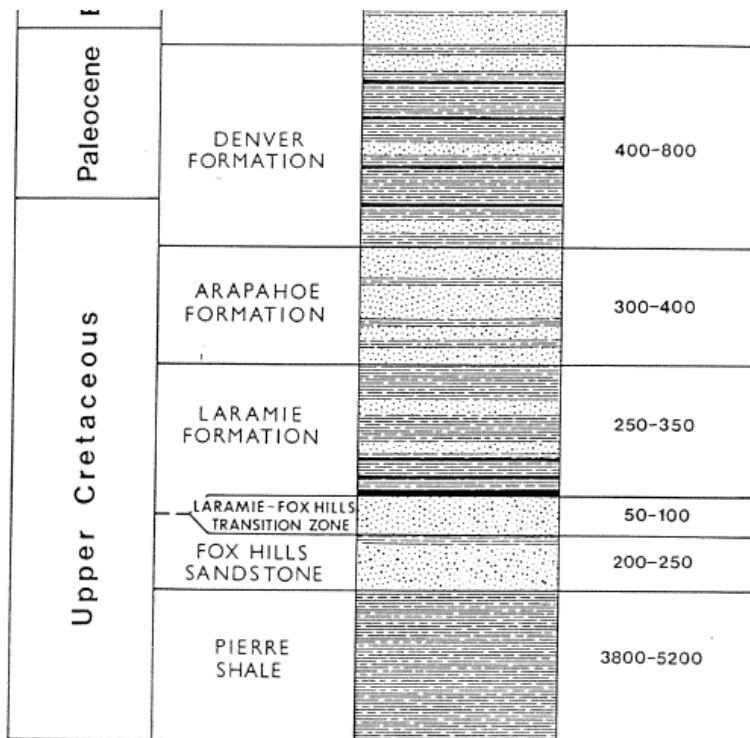
(303) 894-2100 x 5107

From: Prince, Nancy

Sent: Wednesday, February 29, 2012 3:55 PM

To: Sutphin, Dirk

Subject: FW: Ultra El Paso County locations



This stratigraphic column is from Resource Series #27, Colorado Geologic Survey, <http://geosurveystore.state.co.us/p-656-coal-resources-of-the-colorado-springs-12-x-1-quadrangle-colorado.aspx>, which indicates that the Denver and Laramie formations are the coal zones in the area of eastern county we are interested in.

Please verify that these zones are being protected by surface casing in the Ponderosa wells as requested by BLM in the email below.

Thanks,

Nancy K. Prince

303-894-2100 X5103

Permit/Completion Technician

Colorado Oil and Gas Conservation Commission

From: Smeins, Melissa J [<mailto:msmeins@blm.gov>]

Sent: Wednesday, February 29, 2012 2:12 PM

To: Prince, Nancy

Cc: Dickerson, Jimmy W; Hendricks, Marvin L.; Larson, Joan L

Subject: RE: Ultra El Paso County locations

Hi Nancy,

Thanks for the heads up on this, in this case where there Federal Coal is not held by a lease and there is no apparent interest in the coal, We just want to ensure that Federal Coal is protected behind sufficient surface casing, for this well.

The BLM becomes more involved in situations where the Federal Coal is leased or there is active mining, at that point we would need to coordinate because certain types of coal mining are incompatible with Oil & Gas development.

Thanks again and I would be glad to get these heads up from you in the future.

Melissa Smeins-Geologist
Bureau of Land Management
Royal Gorge Field Office
3028 E. Main Street
Canon City, CO 81212

719.269.8523 Phone
msmeins@blm.gov
<http://www.handsontheland.org/garden-park/>

From: Larson, Joan L
Sent: Tuesday, February 28, 2012 4:15 PM
To: Smeins, Melissa J
Cc: Dickerson, Jimmy W; Hendricks, Marvin L.
Subject: FW: Ultra El Paso County locations

Jimmy and Marvin – I was very curious so I pulled the information and went and talked to Melissa. She's the lucky winner!!! Ding, ding, ding.

From: Hendricks, Marvin L.
Sent: Tuesday, February 28, 2012 3:57 PM
To: Prince, Nancy
Cc: Dickerson, Jimmy W; Larson, Joan L
Subject: RE: Ultra El Paso County locations

Nancy,

Thanks for the heads-up on this action. I'll distribute this around the office to see who handles this, and get back to you once I know more.

Marvin Hendricks
Petroleum Engineer
BLM Royal Gorge Field Office
3028 East Main St.
Canon City, CO 81212
(719) 269-8566

From: Prince, Nancy [<mailto:Nancy.Prince@state.co.us>]
Sent: Tuesday, February 28, 2012 3:15 PM
To: Hendricks, Marvin L.
Cc: Debbie Ghani
Subject: Ultra El Paso County locations

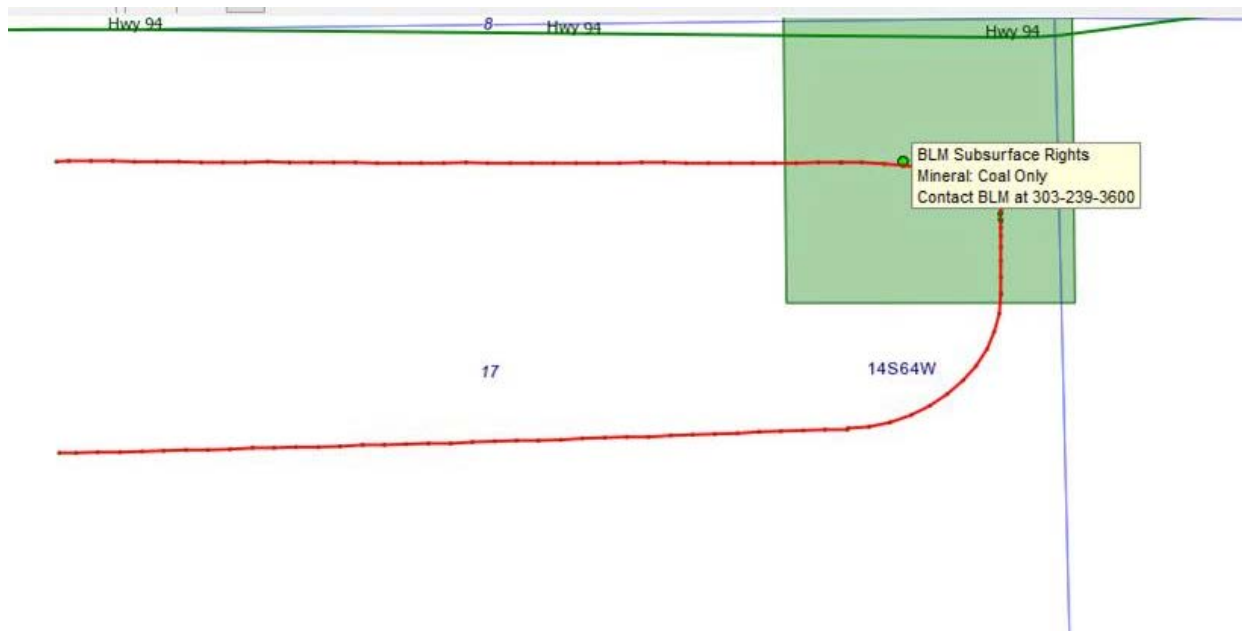
Marvin,

As we discussed, Ultra Petroleum has filed permit applications on land in El Paso County where BLM owns the coal right according to the BLM map overlay. This is a courtesy notification. If more is required, or if you have further questions, please let me know.

NENE 17 14S 64W

API #041-06067 Ponderosa 41-17 1V has been issued
Application Form 2#400250585 Ponderosa 41-17 1H in review
Application Form 2#400252249 Ponderosa 41-17 1H in review

Here is a screen shot of the COGCC map layer.



Nancy K. Prince
303-894-2100 X5103
Permit/Completion Technician
Colorado Oil and Gas Conservation Commission