

HALLIBURTON
Sperry Drilling

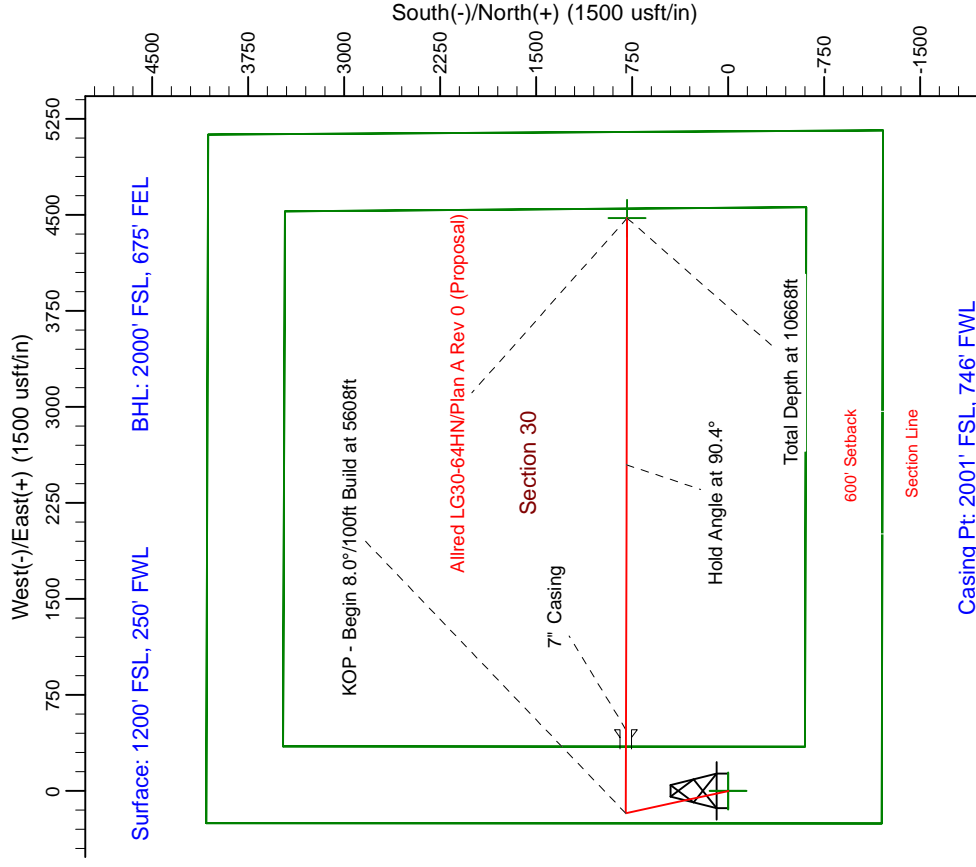
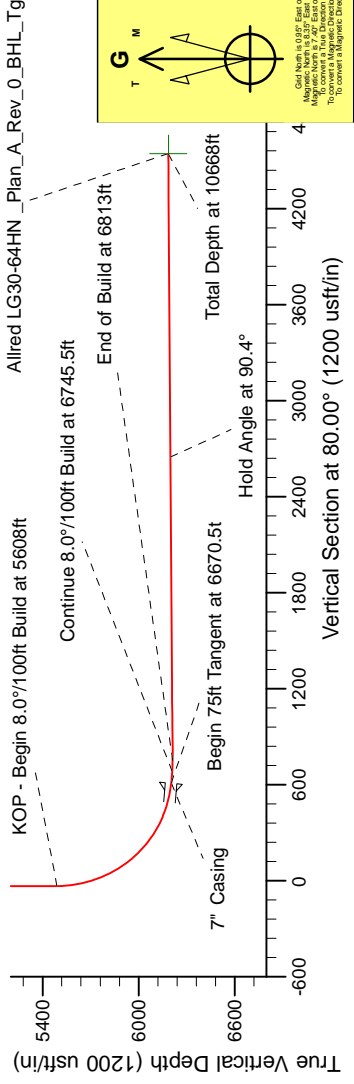
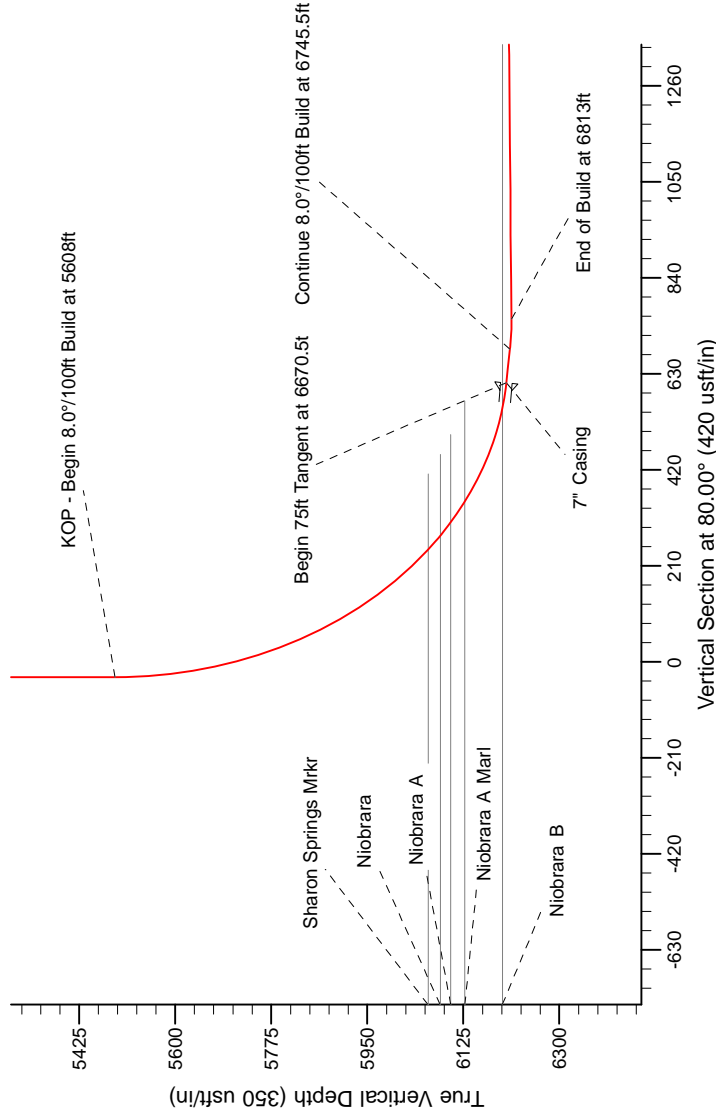
Project: Weld County Colorado (NAD 83)

Well: Allred LG30-64HN

Wellbore: Plan A Rev 0 (PERMITTING PLAN ONLY)

Design: Plan A Rev 0 (Proposal)

SECTION DETAILS										
Sec	MD	Inc	Azi	TVD	+N/-S	+E/-W	Dleg	TFace	Vsect	Target
1	0.0	0.00	0.00	0.0	0.0	0.0	0.00	0.00	0.0	
2	1400.0	0.00	0.00	1400.0	0.0	0.0	0.00	0.00	0.0	
3	2120.0	18.00	347.66	2108.2	109.6	-24.0	2.50	347.66	-4.6	
4	4044.1	18.00	347.66	3938.1	690.4	-151.0	0.00	0.00	-28.9	
5	4764.1	0.00	0.00	4646.3	800.0	-175.0	2.50	180.00	-33.5	
6	5608.0	0.00	0.00	5490.3	800.0	-175.0	0.00	0.00	-33.5	
7	6670.5	85.00	90.14	6203.8	798.4	478.8	8.00	90.14	610.1	
8	6745.5	85.00	90.14	6210.3	798.2	553.5	0.00	0.00	683.6	
9	6813.0	90.40	90.14	6213.0	798.1	620.9	8.00	0.00	750.0	
10	0668.0	90.40	90.13	6186.3	788.8	4475.8	0.00	-129.60	4544.7	Allred LC30-64HN_Plan_A_Rev_0_BHL_Tg



Casing Pt: 2001' FSL, 746' FWL

WELL DETAILS: Allred LG30-64HN (NAD83 Geodetic System)

Ground Level:	4934.0
Latitude	40° 37' 46.488 N
Longitude	104° 1' 45.516 W
Northing	1475583.08
Easting	3408196.54

Plan: Plan A Rev 0 (Proposal) (Allred LG30-64HN/Plan A Rev 0 (PERMITTING PLAN ONLY))

Created By: Jose Patino
Date: 6:32, January 27 2012

Magnetic Model: IGRF2005 (10)

Accuracy: $\pm 0.5^\circ$ Grid North
True North: 89.999°
Magnetic North: 7.40°

Strength: 53382.5nT
Magnetic Inclination: 66.4°
Date: 1/27/2012

Grid North is 0.001° East of True North (Grid Convergence)
Magnetic North is 7.40° East of Grid North (Magnetic Convergence)
To convert Magnetic Direction to a True Direction, Add 9.999°
To convert a Magnetic Direction to a Grid Direction, Add 7.40°

