

US ROCKIES REGION PLANNING

COLORADO NORTHERN ZONE - 83

WELD_WEICHEL 3 PAD

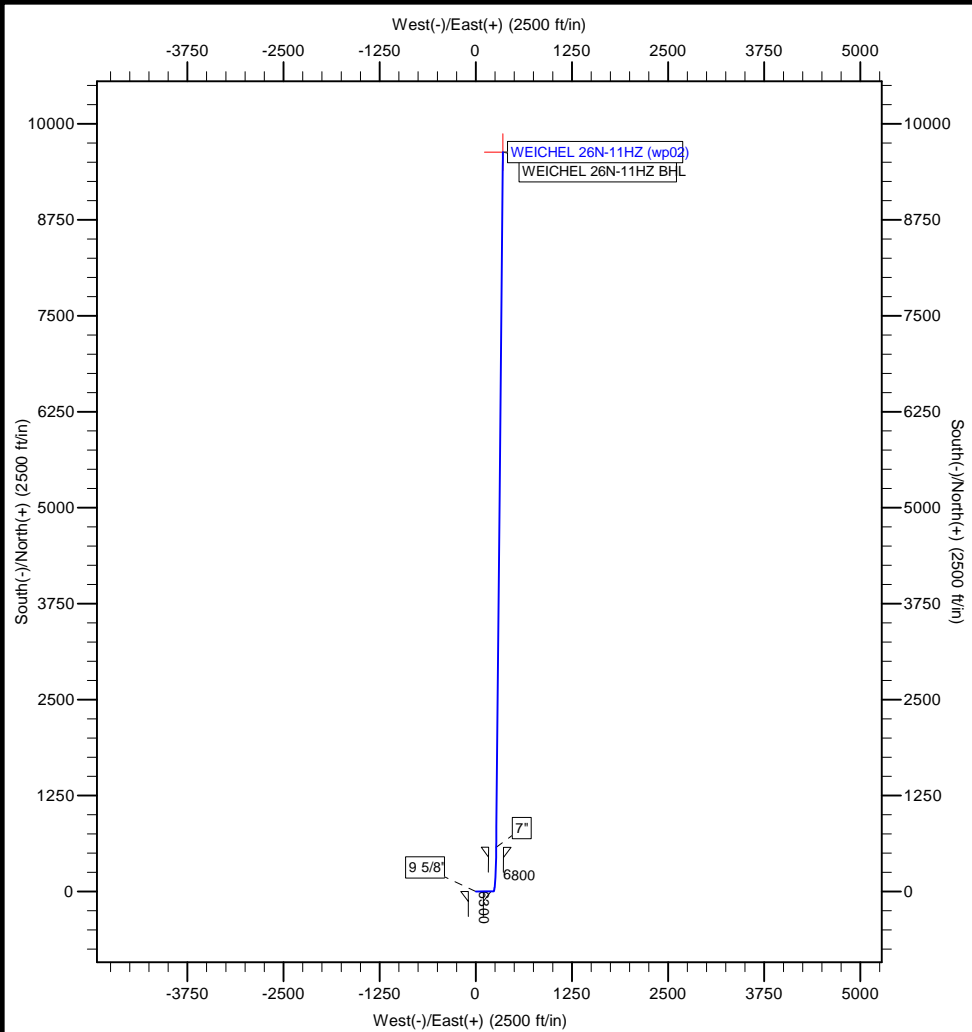
WEICHEL 26N-11HZ

WEICHEL 26N-11HZ

Plan: WEICHEL 26N-11HZ (wp02)

Standard Planning Report

05 December, 2011



Azimuths to True North
Magnetic North: 8.71°

Magnetic Field
Strength: 52963.2snT
Dip Angle: 66.84°
Date: 11/9/2011
Model: IGRF2010



Project: COLORADO NORTHERN ZONE - 83
Site: WELD WEICHEL 3 PAD
Well: WEICHEL 26N-11HZ
Wellbore: WEICHEL 26N-11HZ
Section:
SHL:
Design: WEICHEL 26N-11HZ (wp02)
Latitude: 40.132701
Longitude: -104.623113
GL: 4879.00
KB: GL +RKB @ 4896.00ft

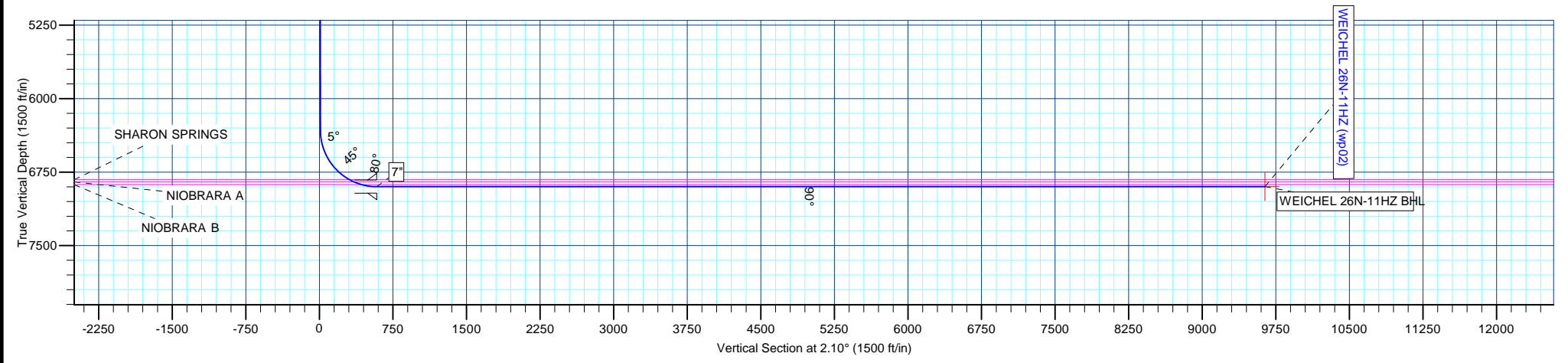
WELL DETAILS: WEICHEL 26N-11HZ						
+N/-S	+E/-W	Northing	Ground Level: Easting	4879.00 Latitude 40.132701	Longitude -104.623113	Slot
0.00	0.00	1292398.97	3245181.02			

SECTION DETAILS								
MD	Inc	Azi	TVD	+N/-S	+E/-W	Dleg	TFace	VSect
0.00	0.00	0.00	0.00	0.00	0.00	0.00	0.00	0.00
1600.00	0.00	0.00	1600.00	0.00	0.00	0.00	0.00	0.00
1743.48	2.87	89.45	1743.42	0.03	3.59	2.00	89.45	0.17
6333.10	2.87	89.45	6327.29	2.25	233.35	0.00	0.00	10.81
7232.63	90.01	0.50	6899.00	575.00	267.00	10.00	-88.95	584.41
7237.40	90.01	0.55	6899.00	579.76	267.04	1.00	89.50	589.17
16290.37	90.01	0.55	6898.00	9632.32	353.57	0.00	0.00	9638.81

WELLBORE TARGET DETAILS (MAP CO-ORDINATES AND LAT/LONG)							
Name	TVD	+N/-S	+E/-W	Latitude	Longitude	Shape	Point
WEICHEL 26N-11HZ BHL	6898.00	9632.32	353.57	40.159143	-104.621848		

FORMATION TOP DETAILS		
TVDPath	MDPath	Formation
3999.00	4001.89	PARKMAN
4311.00	4314.28	SUSSEX
6828.00	6944.12	SHARON SPRINGS
6850.00	6993.74	NIOBRARA A
6878.00	7076.87	NIOBRARA B

CASING DETAILS			
TVD	MD	Name	Size
900.00	900.00	9 5/8"	9-5/8
6899.00	7232.63	7"	7



Anadarko Petroleum Corp

Planning Report

Database:	edmp	Local Co-ordinate Reference:	Well WEICHEL 26N-11HZ
Company:	US ROCKIES REGION PLANNING	TVD Reference:	GL +RKB @ 4896.00ft
Project:	COLORADO NORTHERN ZONE - 83	MD Reference:	GL +RKB @ 4896.00ft
Site:	WELD_WEICHEL 3 PAD	North Reference:	True
Well:	WEICHEL 26N-11HZ	Survey Calculation Method:	Minimum Curvature
Wellbore:	WEICHEL 26N-11HZ		
Design:	WEICHEL 26N-11HZ (wp02)		

Project	COLORADO NORTHERN ZONE - 83		
Map System:	US State Plane 1983	System Datum:	Mean Sea Level
Geo Datum:	North American Datum 1983		
Map Zone:	Colorado Northern Zone		

Site		WELD_WEICHEL 3 PAD			
Site Position:		Northing:	1,292,398.97 usft	Latitude:	40.132701
From:	Lat/Long	Easting:	3,245,181.03 usft	Longitude:	-104.623113
Position Uncertainty:	0.00 ft	Slot Radius:	13-3/16 "	Grid Convergence:	0.57 °

Well		WEICHEL 26N-11HZ				
Well Position	+N/-S	0.00 ft	Northing:	1,292,398.97 usft	Latitude:	40.132701
	+E/-W	0.00 ft	Easting:	3,245,181.03 usft	Longitude:	-104.623113
Position Uncertainty		0.00 ft	Wellhead Elevation:		Ground Level:	4,879.00 ft

Wellbore	WEICHEL 26N-11HZ				
Magnetics	Model Name	Sample Date	Declination (°)	Dip Angle (°)	Field Strength (nT)
	IGRF2010	11/9/2011	8.71	66.84	52,963

Design	WEICHEL 26N-11HZ (wp02)			
Audit Notes:				
Version:	Phase:	PLAN	Tie On Depth:	0.00
Vertical Section:	Depth From (TVD) (ft)	+N/-S (ft)	+E/-W (ft)	Direction (°)
	0.00	0.00	0.00	2.10

Plan Sections										
Measured Depth (ft)	Inclination (°)	Azimuth (°)	Vertical Depth (ft)	+N/-S (ft)	+E/-W (ft)	Dogleg Rate (°/100usft)	Build Rate (°/100usft)	Turn Rate (°/100usft)	TFO (°)	Target
0.00	0.00	0.00	0.00	0.00	0.00	0.00	0.00	0.00	0.00	
1,600.00	0.00	0.00	1,600.00	0.00	0.00	0.00	0.00	0.00	0.00	
1,743.48	2.87	89.45	1,743.42	0.03	3.59	2.00	2.00	0.00	89.45	
6,333.10	2.87	89.45	6,327.29	2.25	233.35	0.00	0.00	0.00	0.00	
7,232.63	90.01	0.50	6,899.00	575.00	267.00	10.00	9.69	-9.89	-88.95	
7,237.40	90.01	0.55	6,899.00	579.76	267.04	1.00	0.01	1.00	89.50	
16,290.37	90.01	0.55	6,898.00	9,632.32	353.57	0.00	0.00	0.00	0.00	WEICHEL 26N-11HZ

Anadarko Petroleum Corp

Planning Report

Database:	edmp	Local Co-ordinate Reference:	Well WEICHEL 26N-11HZ
Company:	US ROCKIES REGION PLANNING	TVD Reference:	GL +RKB @ 4896.00ft
Project:	COLORADO NORTHERN ZONE - 83	MD Reference:	GL +RKB @ 4896.00ft
Site:	WELD_WEICHEL 3 PAD	North Reference:	True
Well:	WEICHEL 26N-11HZ	Survey Calculation Method:	Minimum Curvature
Wellbore:	WEICHEL 26N-11HZ		
Design:	WEICHEL 26N-11HZ (wp02)		

Planned Survey									
Measured Depth (ft)	Inclination (°)	Azimuth (°)	Vertical Depth (ft)	+N/-S (ft)	+E/-W (ft)	Vertical Section (ft)	Dogleg Rate (°/100usft)	Build Rate (°/100usft)	Turn Rate (°/100usft)
0.00	0.00	0.00	0.00	0.00	0.00	0.00	0.00	0.00	0.00
100.00	0.00	0.00	100.00	0.00	0.00	0.00	0.00	0.00	0.00
200.00	0.00	0.00	200.00	0.00	0.00	0.00	0.00	0.00	0.00
300.00	0.00	0.00	300.00	0.00	0.00	0.00	0.00	0.00	0.00
400.00	0.00	0.00	400.00	0.00	0.00	0.00	0.00	0.00	0.00
500.00	0.00	0.00	500.00	0.00	0.00	0.00	0.00	0.00	0.00
600.00	0.00	0.00	600.00	0.00	0.00	0.00	0.00	0.00	0.00
700.00	0.00	0.00	700.00	0.00	0.00	0.00	0.00	0.00	0.00
800.00	0.00	0.00	800.00	0.00	0.00	0.00	0.00	0.00	0.00
900.00	0.00	0.00	900.00	0.00	0.00	0.00	0.00	0.00	0.00
9 5/8"									
1,000.00	0.00	0.00	1,000.00	0.00	0.00	0.00	0.00	0.00	0.00
1,100.00	0.00	0.00	1,100.00	0.00	0.00	0.00	0.00	0.00	0.00
1,200.00	0.00	0.00	1,200.00	0.00	0.00	0.00	0.00	0.00	0.00
1,300.00	0.00	0.00	1,300.00	0.00	0.00	0.00	0.00	0.00	0.00
1,400.00	0.00	0.00	1,400.00	0.00	0.00	0.00	0.00	0.00	0.00
1,500.00	0.00	0.00	1,500.00	0.00	0.00	0.00	0.00	0.00	0.00
1,600.00	0.00	0.00	1,600.00	0.00	0.00	0.00	0.00	0.00	0.00
1,700.00	2.00	89.45	1,699.98	0.02	1.75	0.08	2.00	2.00	0.00
1,743.48	2.87	89.45	1,743.42	0.03	3.59	0.17	2.00	2.00	0.00
1,800.00	2.87	89.45	1,799.87	0.06	6.42	0.30	0.00	0.00	0.00
1,900.00	2.87	89.45	1,899.74	0.11	11.43	0.53	0.00	0.00	0.00
2,000.00	2.87	89.45	1,999.62	0.16	16.43	0.76	0.00	0.00	0.00
2,100.00	2.87	89.45	2,099.49	0.21	21.44	0.99	0.00	0.00	0.00
2,200.00	2.87	89.45	2,199.37	0.26	26.45	1.23	0.00	0.00	0.00
2,300.00	2.87	89.45	2,299.24	0.30	31.45	1.46	0.00	0.00	0.00
2,400.00	2.87	89.45	2,399.12	0.35	36.46	1.69	0.00	0.00	0.00
2,500.00	2.87	89.45	2,498.99	0.40	41.46	1.92	0.00	0.00	0.00
2,600.00	2.87	89.45	2,598.87	0.45	46.47	2.15	0.00	0.00	0.00
2,700.00	2.87	89.45	2,698.74	0.50	51.47	2.39	0.00	0.00	0.00
2,800.00	2.87	89.45	2,798.62	0.55	56.48	2.62	0.00	0.00	0.00
2,900.00	2.87	89.45	2,898.49	0.59	61.49	2.85	0.00	0.00	0.00
3,000.00	2.87	89.45	2,998.36	0.64	66.49	3.08	0.00	0.00	0.00
3,100.00	2.87	89.45	3,098.24	0.69	71.50	3.31	0.00	0.00	0.00
3,200.00	2.87	89.45	3,198.11	0.74	76.50	3.54	0.00	0.00	0.00
3,300.00	2.87	89.45	3,297.99	0.79	81.51	3.78	0.00	0.00	0.00
3,400.00	2.87	89.45	3,397.86	0.84	86.52	4.01	0.00	0.00	0.00
3,500.00	2.87	89.45	3,497.74	0.88	91.52	4.24	0.00	0.00	0.00
3,600.00	2.87	89.45	3,597.61	0.93	96.53	4.47	0.00	0.00	0.00
3,700.00	2.87	89.45	3,697.49	0.98	101.53	4.70	0.00	0.00	0.00
3,800.00	2.87	89.45	3,797.36	1.03	106.54	4.94	0.00	0.00	0.00
3,900.00	2.87	89.45	3,897.24	1.08	111.55	5.17	0.00	0.00	0.00
4,000.00	2.87	89.45	3,997.11	1.13	116.55	5.40	0.00	0.00	0.00
4,001.89	2.87	89.45	3,999.00	1.13	116.65	5.40	0.00	0.00	0.00
PARKMAN									
4,100.00	2.87	89.45	4,096.99	1.17	121.56	5.63	0.00	0.00	0.00
4,200.00	2.87	89.45	4,196.86	1.22	126.56	5.86	0.00	0.00	0.00
4,300.00	2.87	89.45	4,296.73	1.27	131.57	6.10	0.00	0.00	0.00
4,314.28	2.87	89.45	4,311.00	1.28	132.28	6.13	0.00	0.00	0.00
SUSSEX									
4,400.00	2.87	89.45	4,396.61	1.32	136.58	6.33	0.00	0.00	0.00
4,500.00	2.87	89.45	4,496.48	1.37	141.58	6.56	0.00	0.00	0.00
4,600.00	2.87	89.45	4,596.36	1.42	146.59	6.79	0.00	0.00	0.00

Anadarko Petroleum Corp

Planning Report

Database:	edmp	Local Co-ordinate Reference:	Well WEICHEL 26N-11HZ
Company:	US ROCKIES REGION PLANNING	TVD Reference:	GL +RKB @ 4896.00ft
Project:	COLORADO NORTHERN ZONE - 83	MD Reference:	GL +RKB @ 4896.00ft
Site:	WELD_WEICHEL 3 PAD	North Reference:	True
Well:	WEICHEL 26N-11HZ	Survey Calculation Method:	Minimum Curvature
Wellbore:	WEICHEL 26N-11HZ		
Design:	WEICHEL 26N-11HZ (wp02)		

Planned Survey									
Measured Depth (ft)	Inclination (°)	Azimuth (°)	Vertical Depth (ft)	+N/-S (ft)	+E/-W (ft)	Vertical Section (ft)	Dogleg Rate (°/100usft)	Build Rate (°/100usft)	Turn Rate (°/100usft)
4,700.00	2.87	89.45	4,696.23	1.46	151.59	7.02	0.00	0.00	0.00
4,800.00	2.87	89.45	4,796.11	1.51	156.60	7.26	0.00	0.00	0.00
4,900.00	2.87	89.45	4,895.98	1.56	161.61	7.49	0.00	0.00	0.00
5,000.00	2.87	89.45	4,995.86	1.61	166.61	7.72	0.00	0.00	0.00
5,100.00	2.87	89.45	5,095.73	1.66	171.62	7.95	0.00	0.00	0.00
5,200.00	2.87	89.45	5,195.61	1.71	176.62	8.18	0.00	0.00	0.00
5,300.00	2.87	89.45	5,295.48	1.75	181.63	8.42	0.00	0.00	0.00
5,400.00	2.87	89.45	5,395.36	1.80	186.64	8.65	0.00	0.00	0.00
5,500.00	2.87	89.45	5,495.23	1.85	191.64	8.88	0.00	0.00	0.00
5,600.00	2.87	89.45	5,595.10	1.90	196.65	9.11	0.00	0.00	0.00
5,700.00	2.87	89.45	5,694.98	1.95	201.65	9.34	0.00	0.00	0.00
5,800.00	2.87	89.45	5,794.85	2.00	206.66	9.58	0.00	0.00	0.00
5,900.00	2.87	89.45	5,894.73	2.04	211.66	9.81	0.00	0.00	0.00
6,000.00	2.87	89.45	5,994.60	2.09	216.67	10.04	0.00	0.00	0.00
6,100.00	2.87	89.45	6,094.48	2.14	221.68	10.27	0.00	0.00	0.00
6,200.00	2.87	89.45	6,194.35	2.19	226.68	10.50	0.00	0.00	0.00
6,300.00	2.87	89.45	6,294.23	2.24	231.69	10.74	0.00	0.00	0.00
6,333.10	2.87	89.45	6,327.29	2.25	233.35	10.81	0.00	0.00	0.00
6,400.00	7.33	23.45	6,393.95	6.19	236.72	14.87	10.00	6.66	-98.66
6,500.00	16.98	9.95	6,491.61	26.47	241.79	35.32	10.00	9.65	-13.50
6,600.00	26.88	6.17	6,584.26	63.42	246.76	72.43	10.00	9.91	-3.77
6,700.00	36.84	4.34	6,669.09	115.93	251.47	125.08	10.00	9.95	-1.84
6,751.01	41.92	3.70	6,708.50	148.20	253.73	157.41	10.00	9.97	-1.25
WEICHEL 26N-11HZ HEEL									
6,800.00	46.81	3.20	6,743.51	182.39	255.78	191.65	10.00	9.97	-1.03
6,900.00	56.79	2.38	6,805.28	260.78	259.56	270.13	10.00	9.98	-0.82
6,944.12	61.19	2.08	6,828.00	298.56	261.03	307.94	10.00	9.98	-0.68
SHARON SPRINGS									
6,993.74	66.15	1.77	6,850.00	342.99	262.52	352.39	10.00	9.98	-0.62
NIOBRARA A									
7,000.00	66.77	1.73	6,852.50	348.73	262.69	358.13	10.00	9.99	-0.60
7,076.87	74.45	1.30	6,878.00	421.16	264.60	430.59	10.00	9.99	-0.56
NIOBRARA B									
7,100.00	76.76	1.18	6,883.75	443.56	265.09	452.98	10.00	9.99	-0.53
7,200.00	86.75	0.66	6,898.08	542.38	266.67	551.80	10.00	9.99	-0.51
7,232.63	90.01	0.50	6,899.00	575.00	267.00	584.40	10.00	9.99	-0.50
7"									
7,237.40	90.01	0.55	6,899.00	579.76	267.04	589.17	1.00	0.02	1.00
7,300.00	90.01	0.55	6,898.99	642.36	267.64	651.75	0.00	0.00	0.00
7,400.00	90.01	0.55	6,898.98	742.36	268.60	751.71	0.00	0.00	0.00
7,500.00	90.01	0.55	6,898.97	842.35	269.55	851.67	0.00	0.00	0.00
7,600.00	90.01	0.55	6,898.96	942.35	270.51	951.64	0.00	0.00	0.00
7,700.00	90.01	0.55	6,898.95	1,042.34	271.46	1,051.60	0.00	0.00	0.00
7,800.00	90.01	0.55	6,898.94	1,142.34	272.42	1,151.56	0.00	0.00	0.00
7,900.00	90.01	0.55	6,898.93	1,242.34	273.38	1,251.53	0.00	0.00	0.00
8,000.00	90.01	0.55	6,898.92	1,342.33	274.33	1,351.49	0.00	0.00	0.00
8,100.00	90.01	0.55	6,898.90	1,442.33	275.29	1,451.45	0.00	0.00	0.00
8,200.00	90.01	0.55	6,898.89	1,542.32	276.24	1,551.42	0.00	0.00	0.00
8,300.00	90.01	0.55	6,898.88	1,642.32	277.20	1,651.38	0.00	0.00	0.00
8,400.00	90.01	0.55	6,898.87	1,742.31	278.16	1,751.34	0.00	0.00	0.00
8,500.00	90.01	0.55	6,898.86	1,842.31	279.11	1,851.31	0.00	0.00	0.00
8,600.00	90.01	0.55	6,898.85	1,942.30	280.07	1,951.27	0.00	0.00	0.00
8,700.00	90.01	0.55	6,898.84	2,042.30	281.02	2,051.23	0.00	0.00	0.00
8,800.00	90.01	0.55	6,898.83	2,142.29	281.98	2,151.20	0.00	0.00	0.00

Anadarko Petroleum Corp

Planning Report

Database:	edmp	Local Co-ordinate Reference:	Well WEICHEL 26N-11HZ
Company:	US ROCKIES REGION PLANNING	TVD Reference:	GL +RKB @ 4896.00ft
Project:	COLORADO NORTHERN ZONE - 83	MD Reference:	GL +RKB @ 4896.00ft
Site:	WELD_WEICHEL 3 PAD	North Reference:	True
Well:	WEICHEL 26N-11HZ	Survey Calculation Method:	Minimum Curvature
Wellbore:	WEICHEL 26N-11HZ		
Design:	WEICHEL 26N-11HZ (wp02)		

Planned Survey									
Measured Depth (ft)	Inclination (°)	Azimuth (°)	Vertical Depth (ft)	+N/-S (ft)	+E/-W (ft)	Vertical Section (ft)	Dogleg Rate (°/100usft)	Build Rate (°/100usft)	Turn Rate (°/100usft)
8,900.00	90.01	0.55	6,898.82	2,242.29	282.93	2,251.16	0.00	0.00	0.00
9,000.00	90.01	0.55	6,898.81	2,342.29	283.89	2,351.12	0.00	0.00	0.00
9,100.00	90.01	0.55	6,898.79	2,442.28	284.85	2,451.09	0.00	0.00	0.00
9,200.00	90.01	0.55	6,898.78	2,542.28	285.80	2,551.05	0.00	0.00	0.00
9,300.00	90.01	0.55	6,898.77	2,642.27	286.76	2,651.01	0.00	0.00	0.00
9,400.00	90.01	0.55	6,898.76	2,742.27	287.71	2,750.98	0.00	0.00	0.00
9,500.00	90.01	0.55	6,898.75	2,842.26	288.67	2,850.94	0.00	0.00	0.00
9,600.00	90.01	0.55	6,898.74	2,942.26	289.62	2,950.90	0.00	0.00	0.00
9,700.00	90.01	0.55	6,898.73	3,042.25	290.58	3,050.86	0.00	0.00	0.00
9,800.00	90.01	0.55	6,898.72	3,142.25	291.54	3,150.83	0.00	0.00	0.00
9,900.00	90.01	0.55	6,898.71	3,242.24	292.49	3,250.79	0.00	0.00	0.00
10,000.00	90.01	0.55	6,898.69	3,342.24	293.45	3,350.75	0.00	0.00	0.00
10,100.00	90.01	0.55	6,898.68	3,442.23	294.40	3,450.72	0.00	0.00	0.00
10,200.00	90.01	0.55	6,898.67	3,542.23	295.36	3,550.68	0.00	0.00	0.00
10,300.00	90.01	0.55	6,898.66	3,642.23	296.31	3,650.64	0.00	0.00	0.00
10,400.00	90.01	0.55	6,898.65	3,742.22	297.27	3,750.61	0.00	0.00	0.00
10,500.00	90.01	0.55	6,898.64	3,842.22	298.23	3,850.57	0.00	0.00	0.00
10,600.00	90.01	0.55	6,898.63	3,942.21	299.18	3,950.53	0.00	0.00	0.00
10,700.00	90.01	0.55	6,898.62	4,042.21	300.14	4,050.50	0.00	0.00	0.00
10,800.00	90.01	0.55	6,898.61	4,142.20	301.09	4,150.46	0.00	0.00	0.00
10,900.00	90.01	0.55	6,898.60	4,242.20	302.05	4,250.42	0.00	0.00	0.00
11,000.00	90.01	0.55	6,898.58	4,342.19	303.00	4,350.39	0.00	0.00	0.00
11,100.00	90.01	0.55	6,898.57	4,442.19	303.96	4,450.35	0.00	0.00	0.00
11,200.00	90.01	0.55	6,898.56	4,542.18	304.92	4,550.31	0.00	0.00	0.00
11,300.00	90.01	0.55	6,898.55	4,642.18	305.87	4,650.28	0.00	0.00	0.00
11,400.00	90.01	0.55	6,898.54	4,742.18	306.83	4,750.24	0.00	0.00	0.00
11,500.00	90.01	0.55	6,898.53	4,842.17	307.78	4,850.20	0.00	0.00	0.00
11,600.00	90.01	0.55	6,898.52	4,942.17	308.74	4,950.17	0.00	0.00	0.00
11,700.00	90.01	0.55	6,898.51	5,042.16	309.70	5,050.13	0.00	0.00	0.00
11,800.00	90.01	0.55	6,898.50	5,142.16	310.65	5,150.09	0.00	0.00	0.00
11,900.00	90.01	0.55	6,898.48	5,242.15	311.61	5,250.05	0.00	0.00	0.00
12,000.00	90.01	0.55	6,898.47	5,342.15	312.56	5,350.02	0.00	0.00	0.00
12,100.00	90.01	0.55	6,898.46	5,442.14	313.52	5,449.98	0.00	0.00	0.00
12,200.00	90.01	0.55	6,898.45	5,542.14	314.47	5,549.94	0.00	0.00	0.00
12,300.00	90.01	0.55	6,898.44	5,642.13	315.43	5,649.91	0.00	0.00	0.00
12,400.00	90.01	0.55	6,898.43	5,742.13	316.39	5,749.87	0.00	0.00	0.00
12,500.00	90.01	0.55	6,898.42	5,842.13	317.34	5,849.83	0.00	0.00	0.00
12,600.00	90.01	0.55	6,898.41	5,942.12	318.30	5,949.80	0.00	0.00	0.00
12,700.00	90.01	0.55	6,898.40	6,042.12	319.25	6,049.76	0.00	0.00	0.00
12,800.00	90.01	0.55	6,898.39	6,142.11	320.21	6,149.72	0.00	0.00	0.00
12,900.00	90.01	0.55	6,898.37	6,242.11	321.16	6,249.69	0.00	0.00	0.00
13,000.00	90.01	0.55	6,898.36	6,342.10	322.12	6,349.65	0.00	0.00	0.00
13,100.00	90.01	0.55	6,898.35	6,442.10	323.08	6,449.61	0.00	0.00	0.00
13,200.00	90.01	0.55	6,898.34	6,542.09	324.03	6,549.58	0.00	0.00	0.00
13,300.00	90.01	0.55	6,898.33	6,642.09	324.99	6,649.54	0.00	0.00	0.00
13,400.00	90.01	0.55	6,898.32	6,742.08	325.94	6,749.50	0.00	0.00	0.00
13,500.00	90.01	0.55	6,898.31	6,842.08	326.90	6,849.47	0.00	0.00	0.00
13,600.00	90.01	0.55	6,898.30	6,942.08	327.85	6,949.43	0.00	0.00	0.00
13,700.00	90.01	0.55	6,898.29	7,042.07	328.81	7,049.39	0.00	0.00	0.00
13,800.00	90.01	0.55	6,898.28	7,142.07	329.77	7,149.36	0.00	0.00	0.00
13,900.00	90.01	0.55	6,898.26	7,242.06	330.72	7,249.32	0.00	0.00	0.00
14,000.00	90.01	0.55	6,898.25	7,342.06	331.68	7,349.28	0.00	0.00	0.00
14,100.00	90.01	0.55	6,898.24	7,442.05	332.63	7,449.25	0.00	0.00	0.00
14,200.00	90.01	0.55	6,898.23	7,542.05	333.59	7,549.21	0.00	0.00	0.00

Anadarko Petroleum Corp

Planning Report

Database:	edmp	Local Co-ordinate Reference:	Well WEICHEL 26N-11HZ
Company:	US ROCKIES REGION PLANNING	TVD Reference:	GL +RKB @ 4896.00ft
Project:	COLORADO NORTHERN ZONE - 83	MD Reference:	GL +RKB @ 4896.00ft
Site:	WELD_WEICHEL 3 PAD	North Reference:	True
Well:	WEICHEL 26N-11HZ	Survey Calculation Method:	Minimum Curvature
Wellbore:	WEICHEL 26N-11HZ		
Design:	WEICHEL 26N-11HZ (wp02)		

Planned Survey									
Measured Depth (ft)	Inclination (°)	Azimuth (°)	Vertical Depth (ft)	+N/-S (ft)	+E/-W (ft)	Vertical Section (ft)	Dogleg Rate (°/100usft)	Build Rate (°/100usft)	Turn Rate (°/100usft)
14,300.00	90.01	0.55	6,898.22	7,642.04	334.54	7,649.17	0.00	0.00	0.00
14,400.00	90.01	0.55	6,898.21	7,742.04	335.50	7,749.13	0.00	0.00	0.00
14,500.00	90.01	0.55	6,898.20	7,842.03	336.46	7,849.10	0.00	0.00	0.00
14,600.00	90.01	0.55	6,898.19	7,942.03	337.41	7,949.06	0.00	0.00	0.00
14,700.00	90.01	0.55	6,898.18	8,042.02	338.37	8,049.02	0.00	0.00	0.00
14,800.00	90.01	0.55	6,898.16	8,142.02	339.32	8,148.99	0.00	0.00	0.00
14,900.00	90.01	0.55	6,898.15	8,242.02	340.28	8,248.95	0.00	0.00	0.00
15,000.00	90.01	0.55	6,898.14	8,342.01	341.24	8,348.91	0.00	0.00	0.00
15,100.00	90.01	0.55	6,898.13	8,442.01	342.19	8,448.88	0.00	0.00	0.00
15,200.00	90.01	0.55	6,898.12	8,542.00	343.15	8,548.84	0.00	0.00	0.00
15,300.00	90.01	0.55	6,898.11	8,642.00	344.10	8,648.80	0.00	0.00	0.00
15,400.00	90.01	0.55	6,898.10	8,741.99	345.06	8,748.77	0.00	0.00	0.00
15,500.00	90.01	0.55	6,898.09	8,841.99	346.01	8,848.73	0.00	0.00	0.00
15,600.00	90.01	0.55	6,898.08	8,941.98	346.97	8,948.69	0.00	0.00	0.00
15,700.00	90.01	0.55	6,898.07	9,041.98	347.93	9,048.66	0.00	0.00	0.00
15,800.00	90.01	0.55	6,898.05	9,141.97	348.88	9,148.62	0.00	0.00	0.00
15,900.00	90.01	0.55	6,898.04	9,241.97	349.84	9,248.58	0.00	0.00	0.00
16,000.00	90.01	0.55	6,898.03	9,341.97	350.79	9,348.55	0.00	0.00	0.00
16,100.00	90.01	0.55	6,898.02	9,441.96	351.75	9,448.51	0.00	0.00	0.00
16,200.00	90.01	0.55	6,898.01	9,541.96	352.70	9,548.47	0.00	0.00	0.00
16,290.37	90.01	0.55	6,898.00	9,632.32	353.57	9,638.81	0.00	0.00	0.00
WEICHEL 26N-11HZ BHL									

Design Targets									
Target Name	Dip Angle (°)	Dip Dir. (°)	TVD (ft)	+N/-S (ft)	+E/-W (ft)	Northing (usft)	Easting (usft)	Latitude	Longitude
- hit/miss target									
- Shape									
WEICHEL 26N-11HZ BHL	0.00	0.00	6,898.00	9,632.32	353.57	1,302,034.30	3,245,439.33	40.159143	-104.621848
- plan hits target center									
- Point									

Casing Points					
Measured Depth (ft)	Vertical Depth (ft)	Name	Casing Diameter (")	Hole Diameter (")	
900.00	900.00	9 5/8"	9-5/8	12-1/4	
7,232.63	6,899.00	7"	7	8-3/4	

Formations					
Measured Depth (ft)	Vertical Depth (ft)	Name	Lithology	Dip (°)	Dip Direction (°)
4,001.89	3,999.00	PARKMAN		0.00	
4,314.28	4,311.00	SUSSEX		0.00	
6,944.12	6,828.00	SHARON SPRINGS		0.00	
6,993.74	6,850.00	NIOBRARA A		0.00	
7,076.87	6,878.00	NIOBRARA B		0.00	

Anadarko Petroleum Corp

Planning Report

Database:	edmp	Local Co-ordinate Reference:	Well WEICHEL 26N-11HZ
Company:	US ROCKIES REGION PLANNING	TVD Reference:	GL +RKB @ 4896.00ft
Project:	COLORADO NORTHERN ZONE - 83	MD Reference:	GL +RKB @ 4896.00ft
Site:	WELD_WEICHEL 3 PAD	North Reference:	True
Well:	WEICHEL 26N-11HZ	Survey Calculation Method:	Minimum Curvature
Wellbore:	WEICHEL 26N-11HZ		
Design:	WEICHEL 26N-11HZ (wp02)		