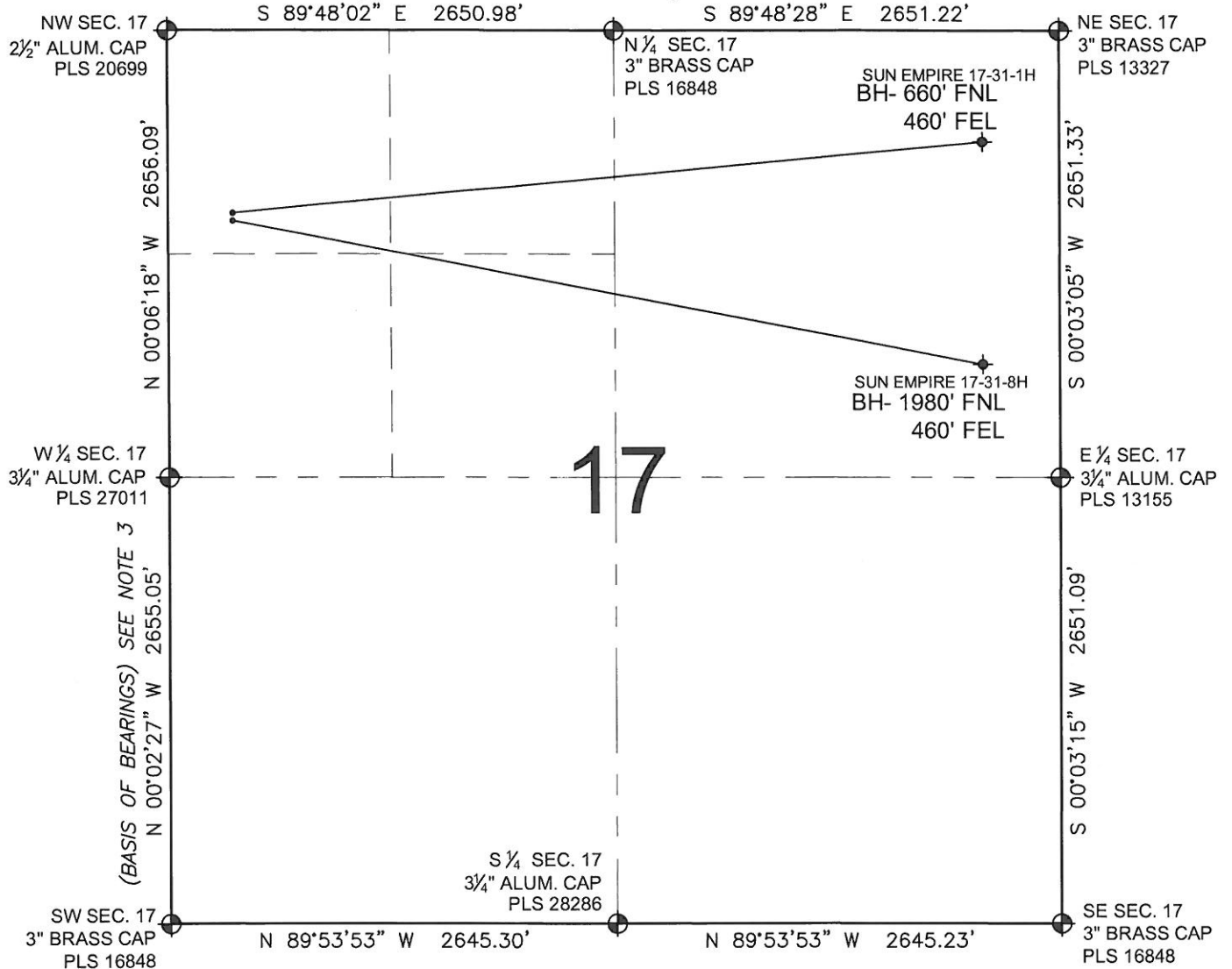


PAD DRAWING: SUN EMPIRE 2 PAD

SECTION 17, TOWNSHIP 3 SOUTH, RANGE 65 WEST, 6TH P.M.



LEGEND

- ⊕ = EXISTING MONUMENT
- ⬮ = BOTTOM HOLE
- BH= BOTTOM HOLE
- = PROPOSED WELL
- ◆ = EXISTING WELL

NOTES:

- THIS FIELD SURVEY CONFORMS TO THE MINIMUM STANDARDS SET BY THE C.O.G.C.C., RULE NO. 215
- HORIZONTAL POSITIONS AND ORTHOMETRIC ELEVATIONS SHOWN AT THE WELL HEAD, ARE BASED ON GPS-RTK POSITIONS DERIVED FROM MINIMUM 2-HOUR STATIC OBSERVATIONS CORRECTED BY THE NATIONAL GEODETIC SURVEY ONLINE POSITIONING USER SERVICE, O.P.U.S. DATUM: HORIZONTAL = NAD83/2007, VERTICAL = NAVD88
- THE BASIS OF BEARINGS ARE STATE PLANE COORDINATE SYSTEM GRID BEARINGS SHOWN HEREON BETWEEN THE DESCRIBED THE MONUMENTS SHOWN HEREON.
- GRID DISTANCES ARE SHOWN, AS MEASURED IN THE FIELD, WITH TIES TO WELLS MEASURED PERPENDICULAR TO SECTION LINES.

NOTES:

- SUN EMPIRE 17-31-1H TO BE AT 1101' FNL, 382' FWL.
 BOTTOM HOLE AT 660' FNL & 460' FEL.
 SUN EMPIRE 17-31-8H TO BE AT 1131' FNL, 382' FWL.
 BOTTOM HOLE AT 1980' FNL & 460' FEL.

PREPARED BY:

PFS llc

Petroleum Field Services, LLC
 1801 W. 13th Ave.
 Denver, CO 80204



ANADARKO E&P CO LP

FIELD DATE:
09-23-11

DRAWING DATE:
09-26-11

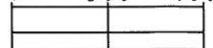
BY:
SMF

PAD NAME:
SUN EMPIRE 2 PAD

SURFACE LOCATION:
ADAMS COUNTY, COLORADO
NW 1/4 NW 1/4, SEC. 17, T3S, R65W, 6TH P.M.



0 500 1000



SCALE: 1"=1000'