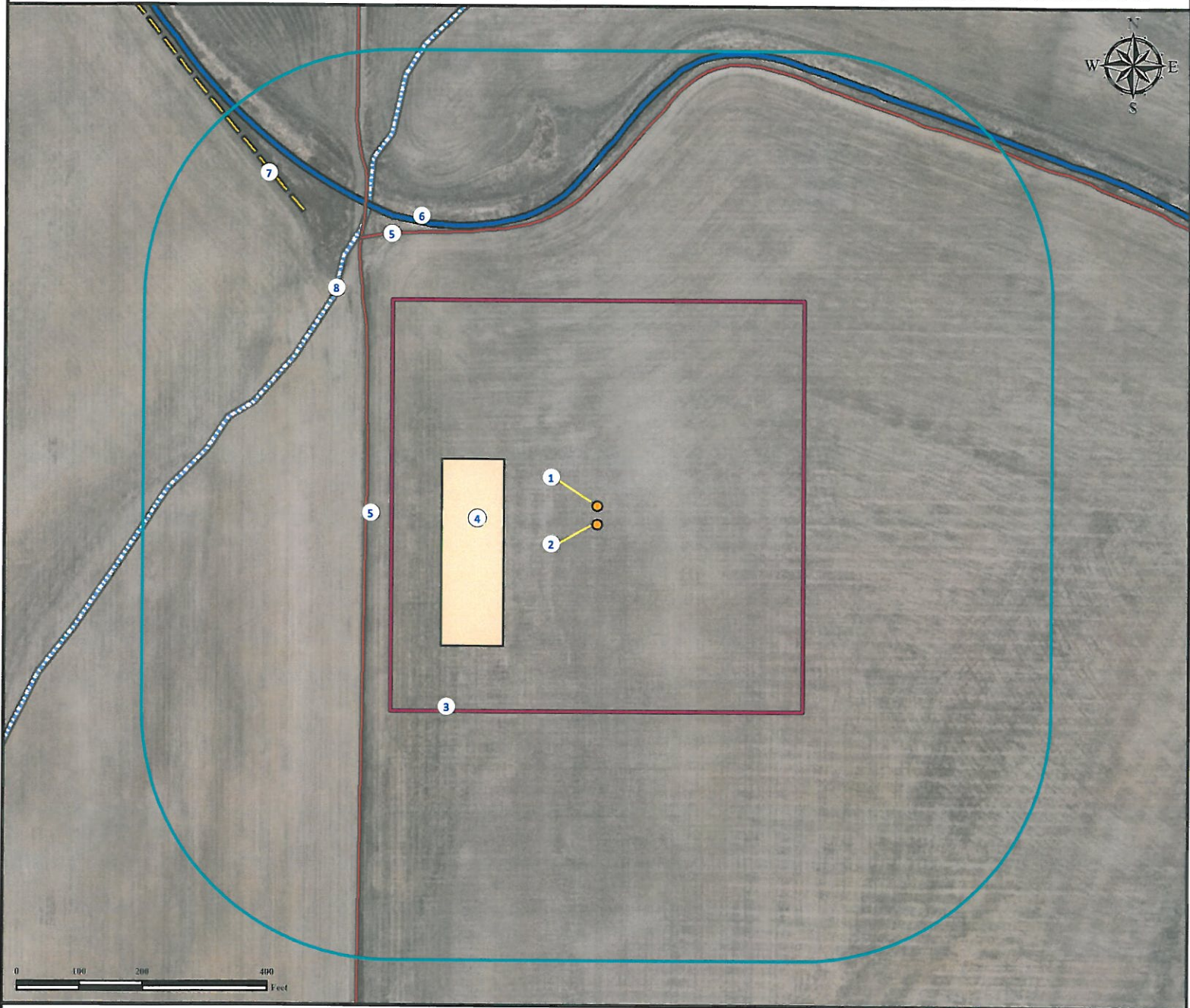


Location Drawing

SUN EMPIRE 17-31-1H

Horizontal Multi Well Pad

NW¼ NW¼ SECTION 17, TOWNSHIP 3 SOUTH, RANGE 65 WEST OF THE 6TH PRINCIPAL MERIDIAN



- | | | |
|---------------------------------------|--|--|
| 1. Proposed well SUN EMPIRE 17-31-1H. | 4. Proposed facility to be ±150' W. | 7. Fence is ±668' NW. |
| 2. Proposed well SUN EMPIRE 17-31-8H. | 5. Private roads are ±370' W and ±464' NW. | 8. NHD Intermittent stream is ±540' NW.
Feature dry at time of mapping. |
| 3. Operational Disturbance Area. | 6. Canal is ±480' NW. | |

Legend

- | | | |
|------------------------------------|--|--|
| Proposed Well
Proposed Facility | Disturbance Area
400' Radius
Fence | Private Road
Intermittent Stream
Canal |
|------------------------------------|--|--|

Reference Location

** All Measurements are Made from Reference Well SUN EMPIRE 17-31-1H **
 Lat: 39.795375° Long: -104.695531° (NAD83)
 Elevation: 5446 Feet

Surface Use: Dryland Crop



Use our resources to find yours!
www.petro-fs.com
 (303) 928-7128

Field Date: 09/23/2011
 Drafting Date: 10/03/2011
 Drafter: DMM
 Checked By: BHF

Data Sources:

- Aerial courtesy of NAIP (2009)
- Intermittent Stream courtesy NHD

Prepared for:

