

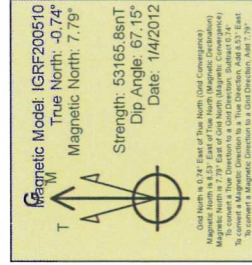
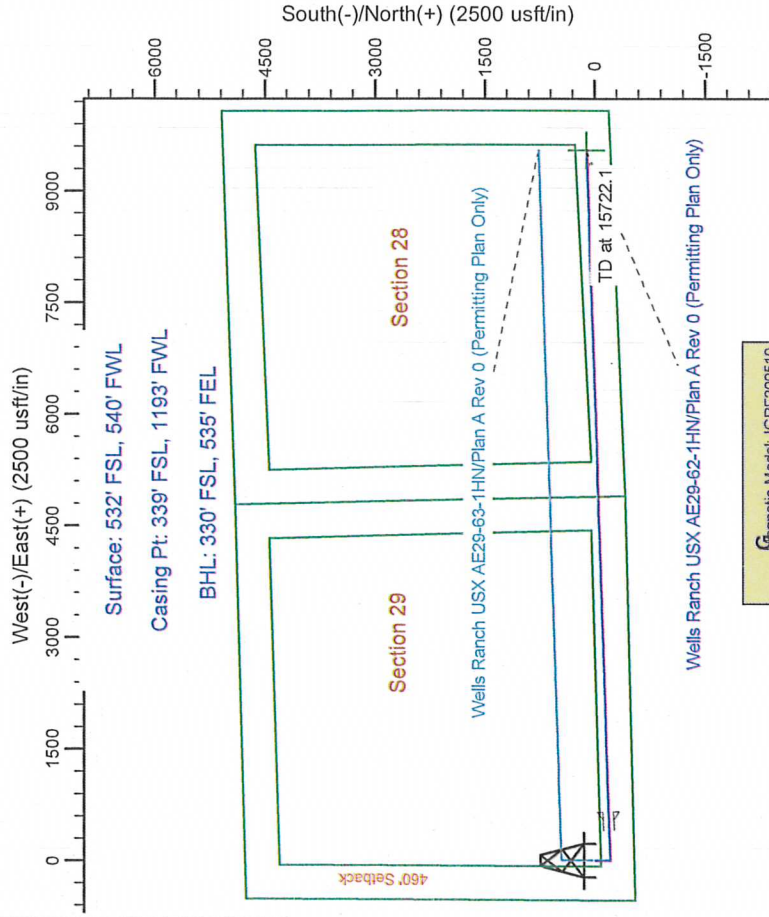
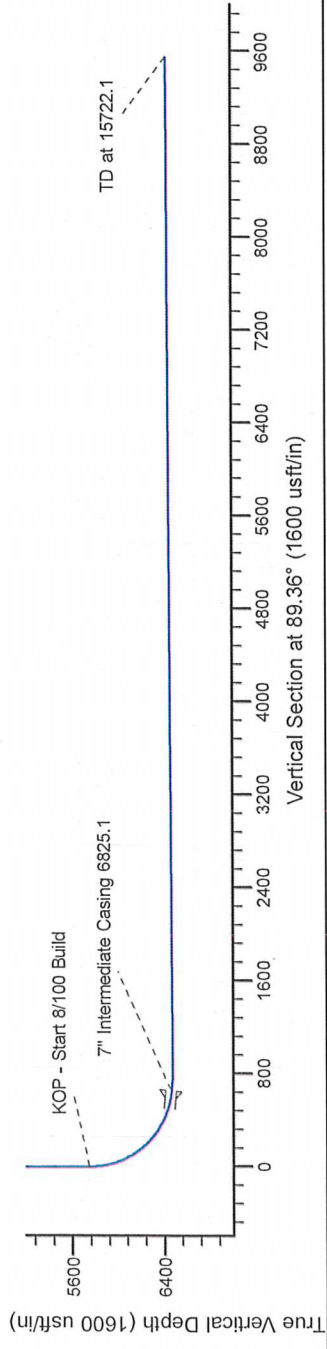
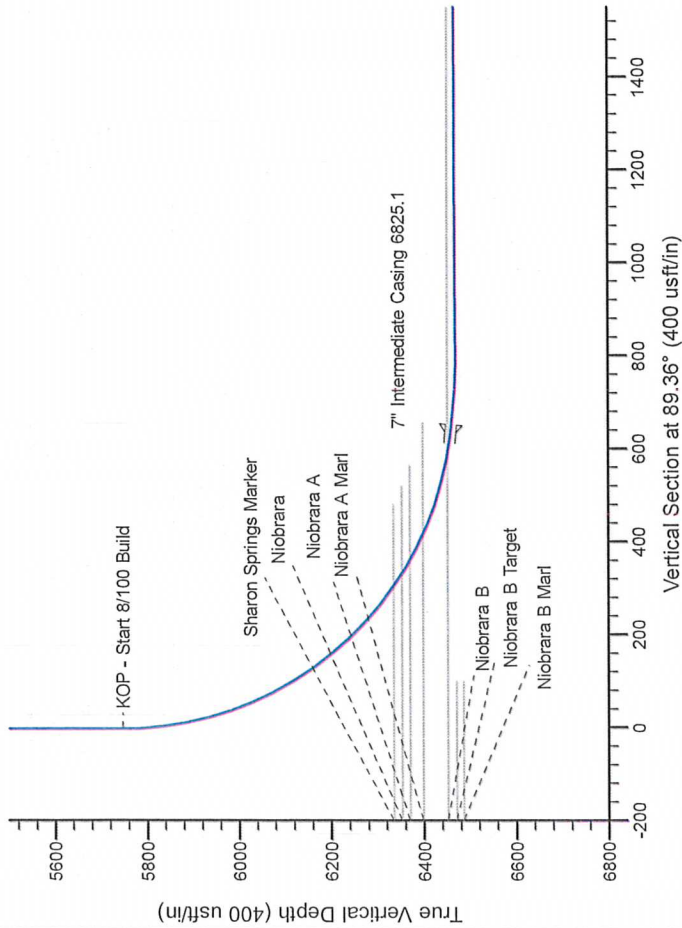
Northern Region Drilling

Project: Weld, Co Colorado (NAD83)
Site: Section 29, T6N, R62W
Well: Wells Ranch USX AE29-62-1HN
Wellbore: Original Drilling
Design: Plan A Rev 0 (Permitting Plan Only)

SECTION DETAILS

Sec	MD	Inc	Azi	TVD	+N/-S	+E/-W	Dleg	TFace	Vsect	Target
1	0.0	0.00	0.00	0.0	0.0	0.0	0.00	0.00	0.0	0.0
2	2500.0	0.00	0.00	2500.0	0.0	0.0	0.00	0.00	0.0	0.0
3	2900.0	10.00	180.00	2898.0	-34.8	0.0	2.50	180.00	-0.4	-0.4
4	3682.3	10.00	180.00	3648.6	-167.2	0.0	0.00	0.00	-1.9	-1.9
5	4062.3	0.00	0.00	4046.6	-202.0	0.0	2.50	180.00	-2.3	-2.3
6	5508.6	0.00	0.00	5493.0	-202.0	0.0	0.00	0.00	-2.3	-2.3
7	5762.6	0.00	0.00	5747.0	-202.0	0.0	0.00	0.00	-2.3	-2.3
8	6825.1	85.00	88.15	6460.4	-180.9	653.4	8.00	88.15	651.4	651.4
9	6900.1	85.00	88.15	6467.0	-178.4	728.1	0.00	0.00	726.1	726.1
10	6985.6	90.24	88.15	6469.7	-176.3	793.5	8.00	0.00	791.5	791.5
11	15722.1	90.24	88.15	6433.0	106.9	9545.4	0.00	0.00	9546.0	9546.0

Wells Ranch USX AE29-62-1HN



WELL DETAILS: Wells Ranch USX AE29-62-1HN			
Northing	Ground Level	Latitude	Longitude
1409522.71	3318766.64	40° 27' 6.804" N	104° 21' 16.380" W
Plan A Rev 0 (Permitting Plan Only) (Wells Ranch USX AE29-62-1HN/Original Drilling)			
Created By: Aaron Duncan		Date: 19/04, January 28 2012	