

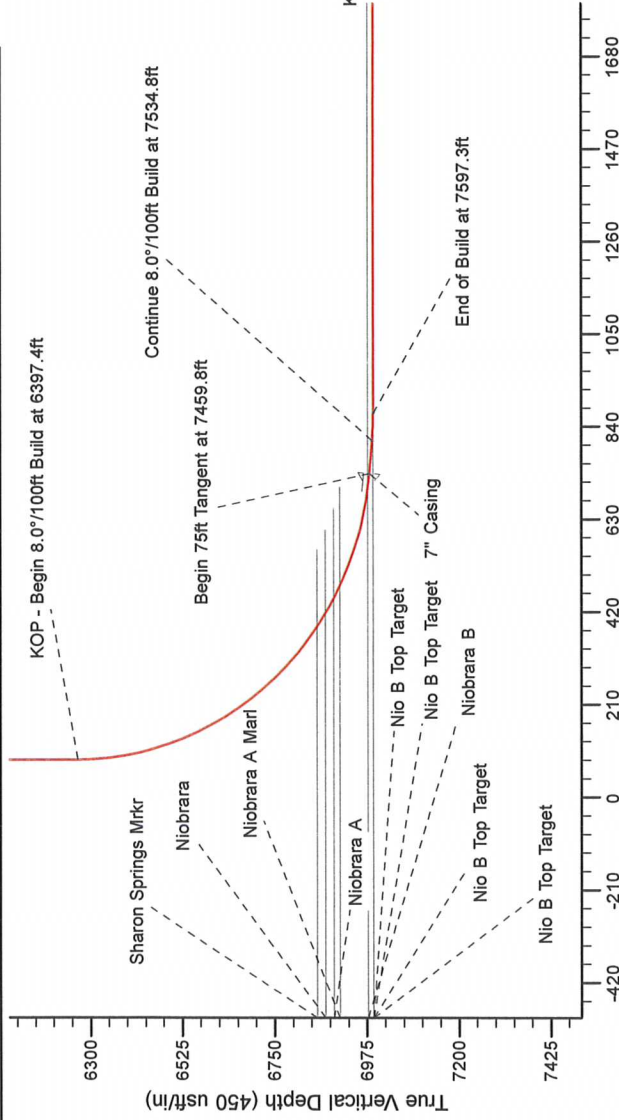
Noble Energy

Project: Weld County, CO (NAD 83)
Site: Sec. 16, T4N, R65W
Well: Boulder G21-69HN
Wellbore: Plan A - Rev 0 (PERMITTING PLAN ONLY)
Design: Boulder G21-69HN Plan A Rev1 Proposal

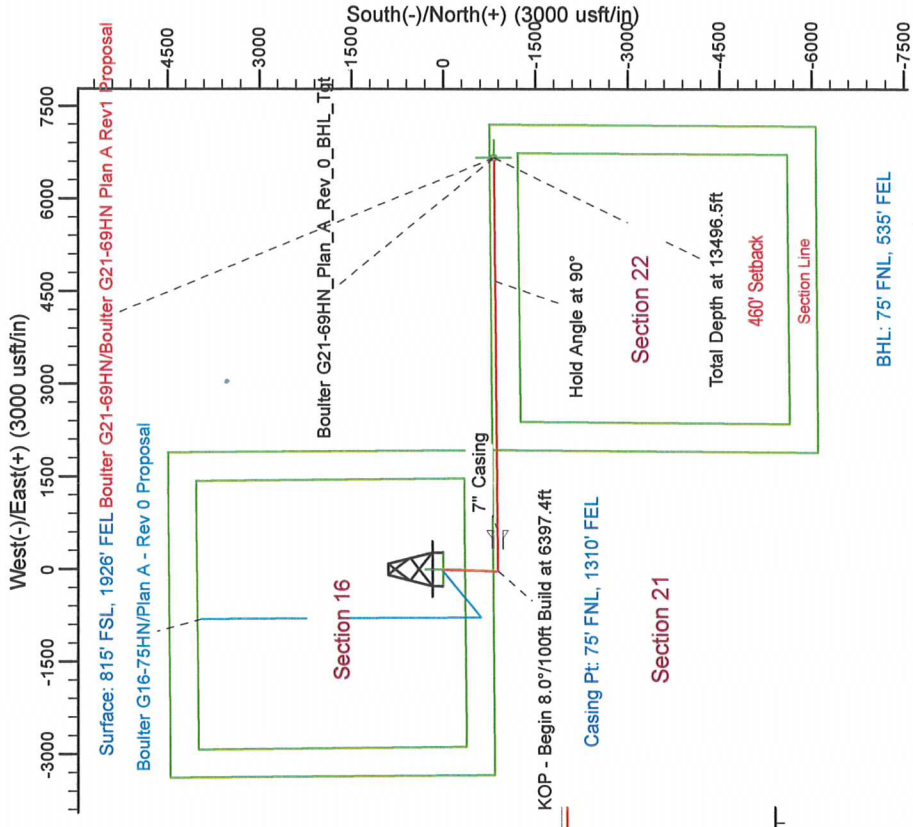
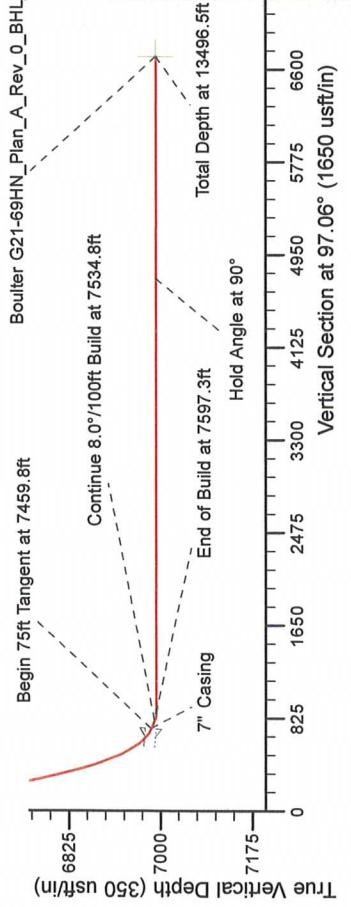
SECTION DETAILS

Sec	MD	Inc	Azi	TVD	+N/-S	+E/-W	Dleg	TFace	VFace	Target
1	0.0	0.00	0.00	0.0	0.0	0.0	0.00	0.00	0.0	0.0
2	1300.0	0.00	0.00	1300.0	0.0	0.0	0.00	0.00	0.0	0.0
3	2020.0	18.00	181.54	2008.2	-112.1	-3.0	2.50	181.54	10.8	10.8
4	4175.2	18.00	181.54	4057.9	-777.9	-21.0	0.00	0.00	74.8	74.8
5	4895.2	0.00	0.00	4766.1	-890.0	-24.0	2.50	180.00	85.5	85.5
6	6357.4	0.00	0.00	6268.3	-890.0	-24.0	0.00	0.00	85.5	85.5
7	7459.8	85.00	89.44	6981.8	-883.6	-29.7	8.00	89.44	733.5	733.5
8	7534.8	85.00	89.44	6988.3	-882.9	-29.7	8.00	89.44	807.6	807.6
9	7597.3	90.00	88.44	6991.0	-882.3	-29.7	8.00	88.44	869.5	869.5
10	103496.5	90.00	88.45	6991.0	-825.3	-6665.7	0.00	87.33	6716.6	6716.6

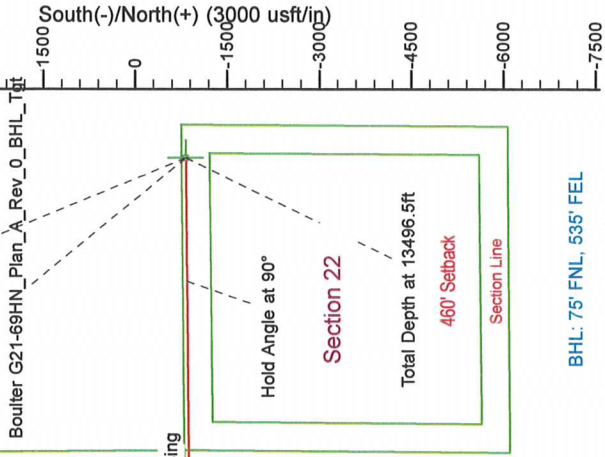
Boulder G21-69HN_Plan_A_Rev_0_BHL_Tgt



Vertical Section at 97.06° (420 usft/in)



Surface: 815' FSL, 1926' FEL Boulder G21-69HN/Boulder G21-69HN Plan A Rev1 Proposal
Boulder G16-75HN/Plan A - Rev 0 Proposal



WELL DETAILS: Boulder G21-69HN (NAD83 Geodetic System)

Ground Level: 4807.0
Northing: 1355925.45
Easting: 3232719.73
Latitude: 40° 18' 26.676 N
Longitude: 104° 39' 55.944 W

Plan: Boulder G21-69HN Plan A Rev1 Proposal (Boulder G21-69HN/Plan A - Rev 0 (PERMITTING PLAN ONLY))

Created By: Jose Patino
Checked: _____
Reviewed: _____
Approved: _____
Date: 20-43, December 11 2011

