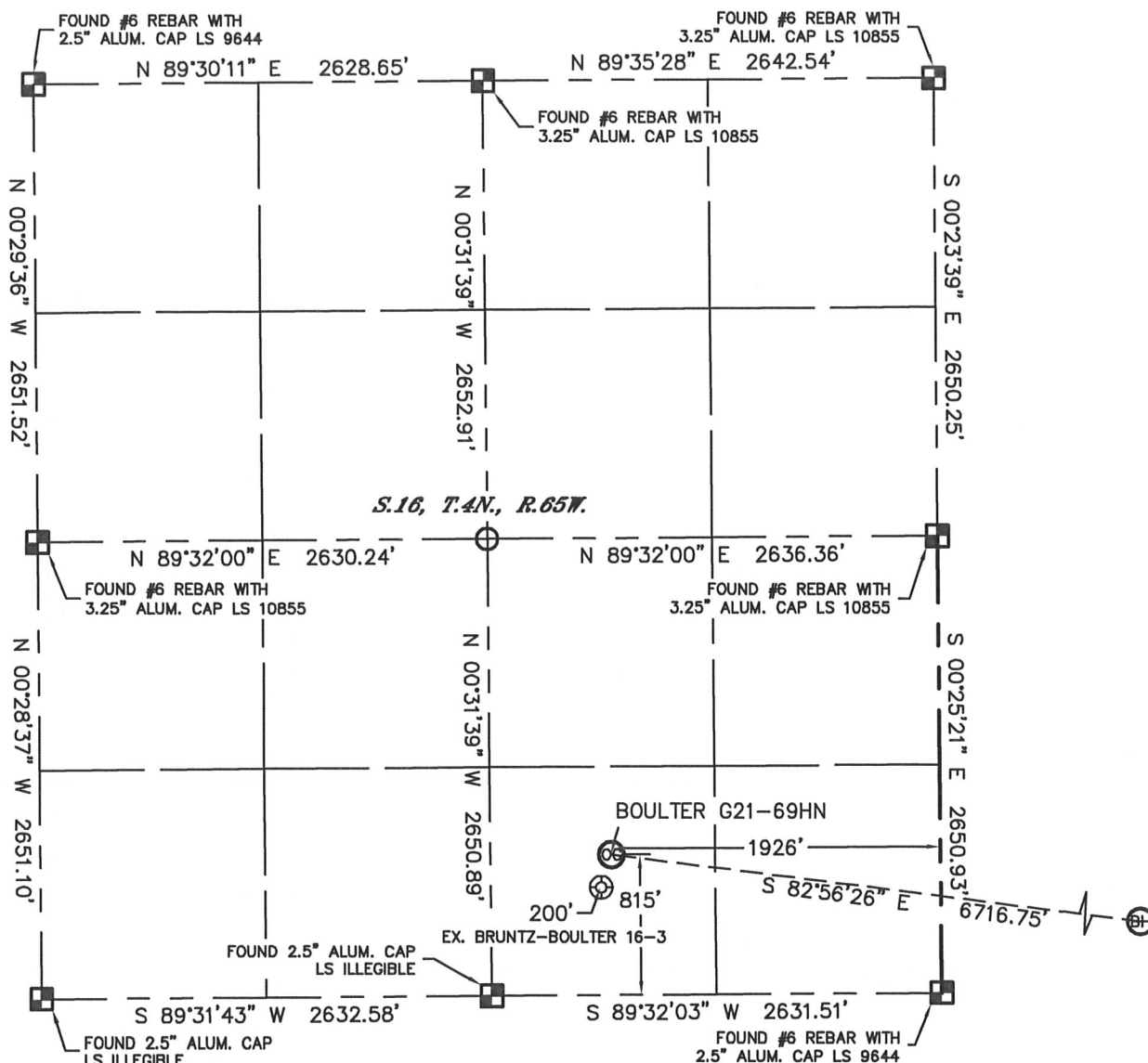


WELL LOCATION CERTIFICATE

SECTION: 16
TOWNSHIP: 4N
RANGE: 65W

THIS MAP DOES NOT REPRESENT A BOUNDARY SURVEY



In accordance with a request from Ryan Hawkins with Noble Energy Inc. Lat40°, Inc. has determined the surface location of the BOULTER G21-69HN to be 815' from the SOUTH line and 1926' from the EAST line of Section 16, Township 4 North, Range 65 West and the bottom hole to be 75' from the NORTH line and 535' from the EAST line as measured at right angles from the section lines of Section 22, Township 4 North, Range 65 West of the Sixth Principal Meridian, County of Weld, State of Colorado.

I hereby state that this Well Location Certificate was prepared by me, or under my direct supervision, that the fieldwork was completed on 10/4/11, for and on behalf of Noble Energy Inc. That this is not a Land Survey Plat or an Improvement Survey Plat, and that it is not to be relied upon for establishment of fence, building, or other future improvement lines.

NOTE:

- 1) Bearings shown are Grid Bearings of the Colorado State Plane Coordinate System, North Zone, North American Datum 1983/2007. The lineal dimensions as contained herein are based upon the "U.S. Survey Foot."
- 2) Ground elevations are based on an observed GPS elevation (NAVD 1988 DATUM).
- 3) NEAREST EXISTING WELL: BRUNTZ-BOULTER 16-3, 200'
- 4) IMPROVEMENTS: See LOCATION DRAWING for all visible improvements within 400' of disturbed area.
- 5) SURFACE USE: RANGELAND
- 6) INSTRUMENT OPERATOR: KYLE RUTZ

NOTE

According to Colorado law, you must commence any legal action based upon any defect in this W.L.C. within three years after you discover such defect. In no event, may any action based upon any defect in this survey be commenced more than ten years after the date of the certificate shown hereon. (13-80-105 C.R.S.)

LEGEND

- = ALIQUOT MONUMENT AS DESCRIBED
- = CALCULATED POSITION

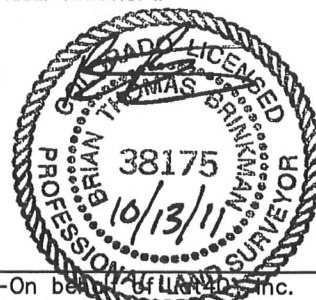
SURFACE LOCATION
LATITUDE: 40.30741°N
LONGITUDE: 104.66554°W
PDOP: 2.0
ELEV: 4807'
1/4, 1/4: SW1/4SE1/4
NEAREST PROPERTY LINE: 283' NE

BOTTOM HOLE
LATITUDE: 40.30497°N
LONGITUDE: 104.64167°W

SHEET 1 OF 2

Brian T. Brinkman—On behalf of Lat40°, Inc.
Colorado Licensed Professional
Land Surveyor No. 38175

PROJECT#: 2011276

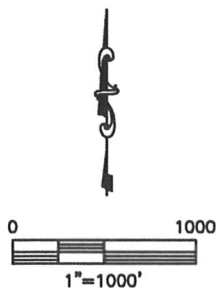
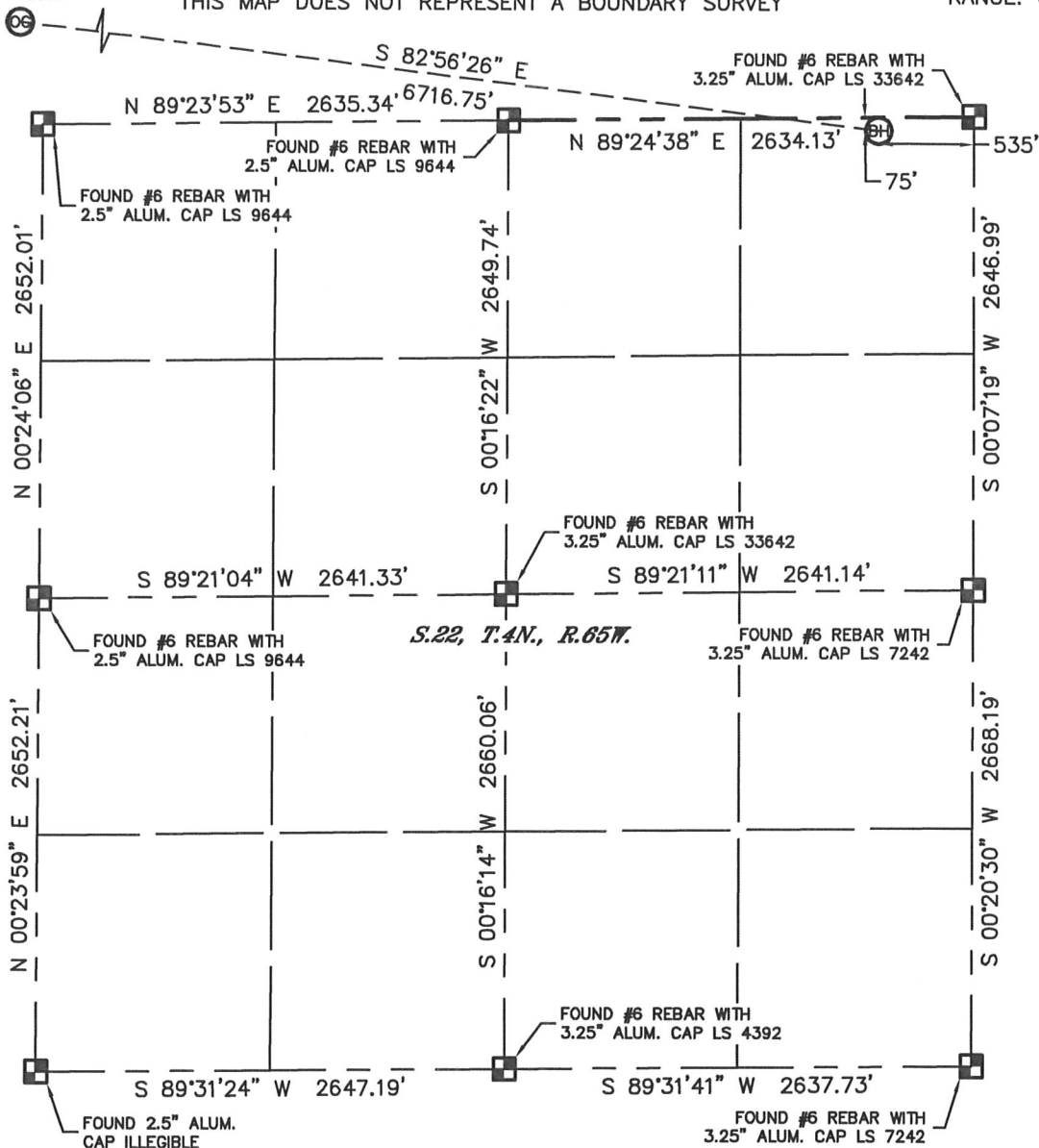


WELL LOCATION CERTIFICATE

SECTION: 16
TOWNSHIP: 4N
RANGE: 65W

BOULTER G21-69HN



THIS MAP DOES NOT REPRESENT A BOUNDARY SURVEY



NOTE

According to Colorado law, you must commence any legal action based upon any defect in this W.L.C. within three years after you discover such defect. In no event, may any action based upon any defect in this survey be commenced more than ten years after the date of the certificate shown hereon. (13-80-105 C.R.S.)

LEGEND

-  = ALIQUOT MONUMENT AS DESCRIBED
-  = CALCULATED POSITION

SHEET 2 OF 2

Brian T. Brinkman—On behalf of Lat40°, Inc.
Colorado Licensed Professional
Land Surveyor No. 38175

PROJECT#: 2011276



SITE SKETCH

BOULTER G21-69HN

SECTION: 16
TOWNSHIP: 4N
RANGE: 65W

