

T11N, R62W, 6th P.M.

EOG RESOURCES, INC.

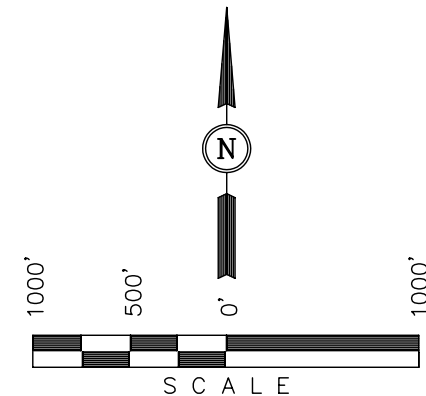
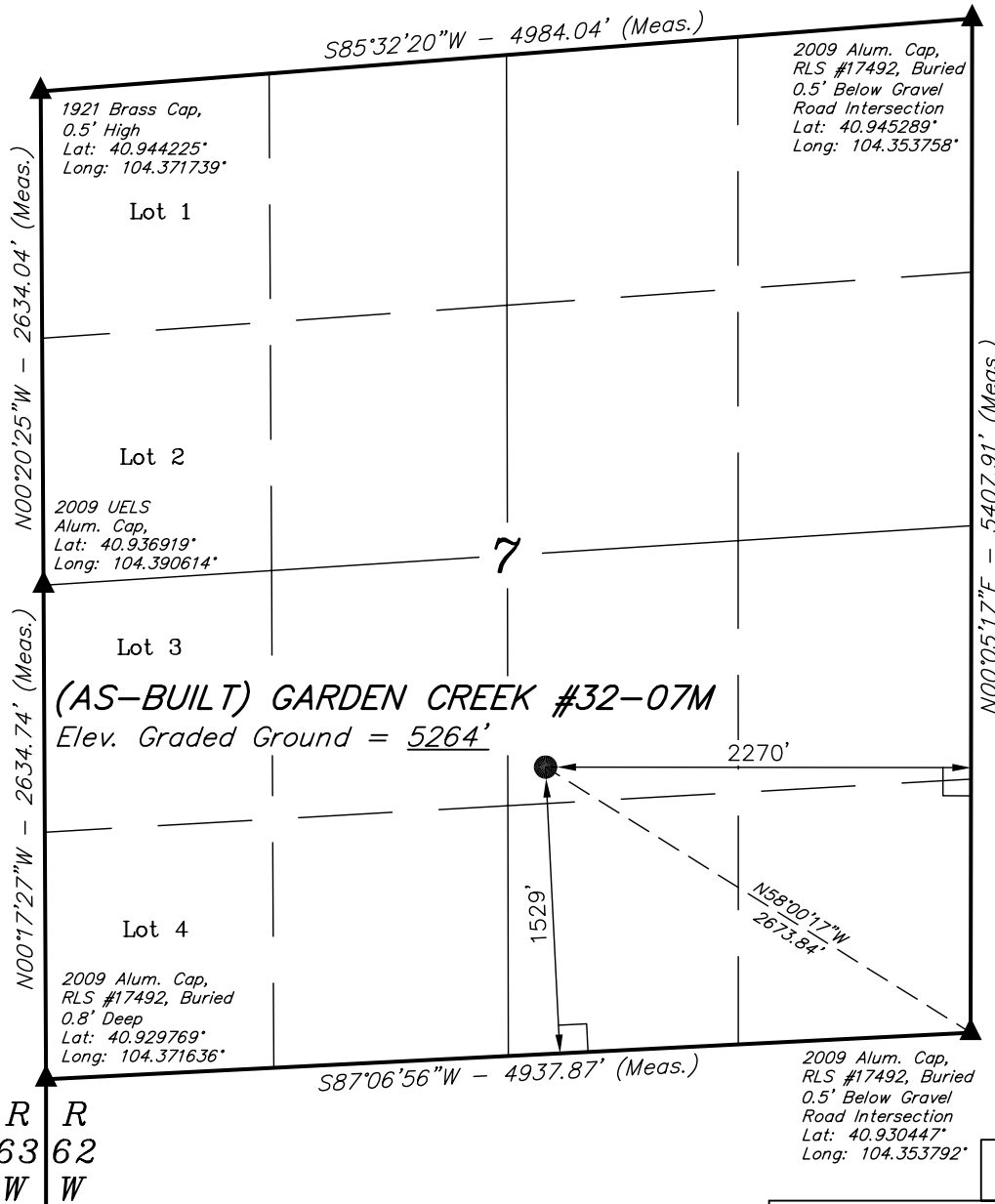
Well location, (AS-BUILT) GARDEN CREEK #32-07M, located as shown in the NW 1/4 SE 1/4, Section 7, T11N, R62W, 6th P.M., Weld County, Colorado.

BASIS OF ELEVATION

SPOT ELEVATION AT THE NORTHEAST CORNER OF SECTION 1, T11N, R63W, 6th P.M. TAKEN FROM THE HEREFORD, QUADRANGLE, COLORADO, WELD COUNTY, 7.5 MINUTE QUAD (TOPOGRAPHIC MAP) PUBLISHED BY THE UNITED STATES DEPARTMENT OF THE INTERIOR, GEOLOGICAL SURVEY. SAID ELEVATION IS MARKED AS BEING 5352 FEET.

BASIS OF BEARINGS

BASIS OF BEARINGS IS A G.P.S. OBSERVATION.



CERTIFICATE

THIS IS TO CERTIFY THAT THE ABOVE PLAT WAS PREPARED FROM FIELD NOTES OF ACTUAL SURVEYS MADE BY ME OR UNDER MY SUPERVISION AND THAT THE SAME ARE TRUE AND CORRECT TO THE BEST OF MY KNOWLEDGE AND BELIEF.

REGISTERED LAND SURVEYOR
REGISTRATION NO. 17492
STATE OF COLORADO
01-03-12

UINTAH ENGINEERING & LAND SURVEYING
85 SOUTH 200 EAST - VERNAL, UTAH 84078
(435) 789-1017

PDOP = 2.9

LEGEND:

- └─┘ = 90° SYMBOL
- = PROPOSED WELL HEAD.
- ▲ = SECTION CORNERS LOCATED.

NAD 83 (AS-BUILT SURFACE LOCATION)	
LATITUDE	= 40°56'03.61" (40.934336)
LONGITUDE	= 104°21'43.19" (104.361997)
NAD 27 (AS-BUILT SURFACE LOCATION)	
LATITUDE	= 40°56'03.67" (40.934353)
LONGITUDE	= 104°21'41.35" (104.361486)
STATE PLANE NAD 83	
N: 1585249.28	E: 3314438.63
STATE PLANE NAD 27	
N: 585247.11	E: 2314587.98

SCALE 1" = 1000'	DATE SURVEYED: 12-22-11	DATE DRAWN: 01-03-12
PARTY Z.B. A.G. J.I.	REFERENCES G.L.O. PLAT	
WEATHER WARM	FILE EOG RESOURCES, INC.	