

# HALLIBURTON

## Cementing Job Log

### The Road to Excellence Starts with Safety

Sold To #: 304535		Ship To #: 2285832		Quote #:		Sales Order #: 9201364	
Customer: PDC ENERGY EBUS				Customer Rep: ALVARODO, PHILIP			
Well Name: National Hog Farm		Well #: 13-9		API/UWI #:		State: Colorado	
Field: Wattenberg		City (SAP): GREELEY		County/Parish: Weld			
Legal Description:							
Lat: N 40.412 deg. OR N 40 deg. 24 min. 44.316 secs.				Long: W 104.449 deg. OR W -105 deg. 33 min. 4.284 secs.			
Contractor:		Rig/Platform Name/Num:		Ticket Amount:			
Job Purpose: Recement Service		Job Type: Recement Service					
Well Type: Development Well		Srvc Supervisor: SNYDER, JONATHAN MBU ID Emp #: 435616					
Sales Person: FLING, MATTHEW							

Activity Description	Date/Time	Cht #	Rate bbl/min	Volume bbl		Pressure psig		Comments
				Stage	Total	Tubing	Casing	
Arrive at Location from Service Center	01/16/2012 06:30							ARRIVED AND CONDUCTED A HAZARD HUNT AND FOUND NO HAZARDS THAT CONFLICT WITH US RIGGING UP EQUIPMENT.
Pre-Job Safety Meeting	01/16/2012 07:45							HELD SAFETY MEETING WITH ALL EMPLOYEES AND ALL THIRD PARTY PERSONEL PRIOR TO PUMPING THE CEMENT JOB. WAITED WHILE A BAG OF MUDFLUSH WAS BROUGHT OUT TO LOCATION
Start Job	01/16/2012 09:29							HELD SAFETY MEETING WITH ALL EMPLOYEES PRIOR TO RIGGING DOWN AND DISCUSSED ALL HAZARDS WHILE RIGGING DOWN EQUIPMENT.
Test Lines	01/16/2012 09:29							PRESSURE TEST LINES TO 3500 PSI
Pump Spacer 1	01/16/2012 09:32		2	10		1299.0		W/ RIG WATER
Pump Spacer 2	01/16/2012 09:37		2	12		1361.0		MUDFLUSH SPACER
Pump Spacer 1	01/16/2012 09:43		2	10		1350.0		W/ RIG WATER
Activity Description	Date/Time	Cht	Rate bbl/min	Volume bbl	Pressure psig	Comments		

Sold To #: 304535

Ship To #: 2285832

Quote #:

Sales Order #:

9201364

SUMMIT Version: 7.2.27

Monday, January 16, 2012 12:08:00

# HALLIBURTON

## Cementing Job Log

		#	Stage	Total	Tubing	Casing	
Pump Cement	01/16/2012 09:49		2	96		1345. 0	248 SKS SURFACE VARICEM CEMENT MIXED @ 12 PPG W/ RIG WATER
Pump Displacement	01/16/2012 10:39		1.5	1.5		1985. 0	W/ RIG WATER
Shutdown	01/16/2012 10:40						SHUTDOWN AND WAITED WHILE RIG CREW PULLED 49 JOINTS OF TUBING.
Pump Cement	01/16/2012 11:16		2	45		1109. 0	116 SKS SURFACE VARICEM CEMENT MIXED @ 12 PPG W/ RIG WATER, GOT CEMENT RETURNS BACK AT 45 BBLs OF CEMENT AWAY IN THE SECOND STAGE.
Pump Displacement	01/16/2012 11:40		2	0.5		1210. 0	W/ RIG WATER
End Job	01/16/2012 11:42						
Pre-Rig Down Safety Meeting	01/16/2012 12:00						HELD SAFETY MEETING WITH ALL EMPLOYEES PRIOR TO RIGGING DOWN AND DISCUSSED ALL HAZARDS WHILE RIGGING DOWN EQUIPMENT.
Depart Location for Service Center or Other Site	01/16/2012 13:00						HELD SAFETY MEETING PRIOR TO LEAVING LOCATION AND DISCUSSED ALL POTENTIAL HAZARDS WHILE DRIVING BACK TO THE SERVICE CENTER.

Sold To # : 304535

Ship To # : 2285832

Quote # :

Sales Order # :

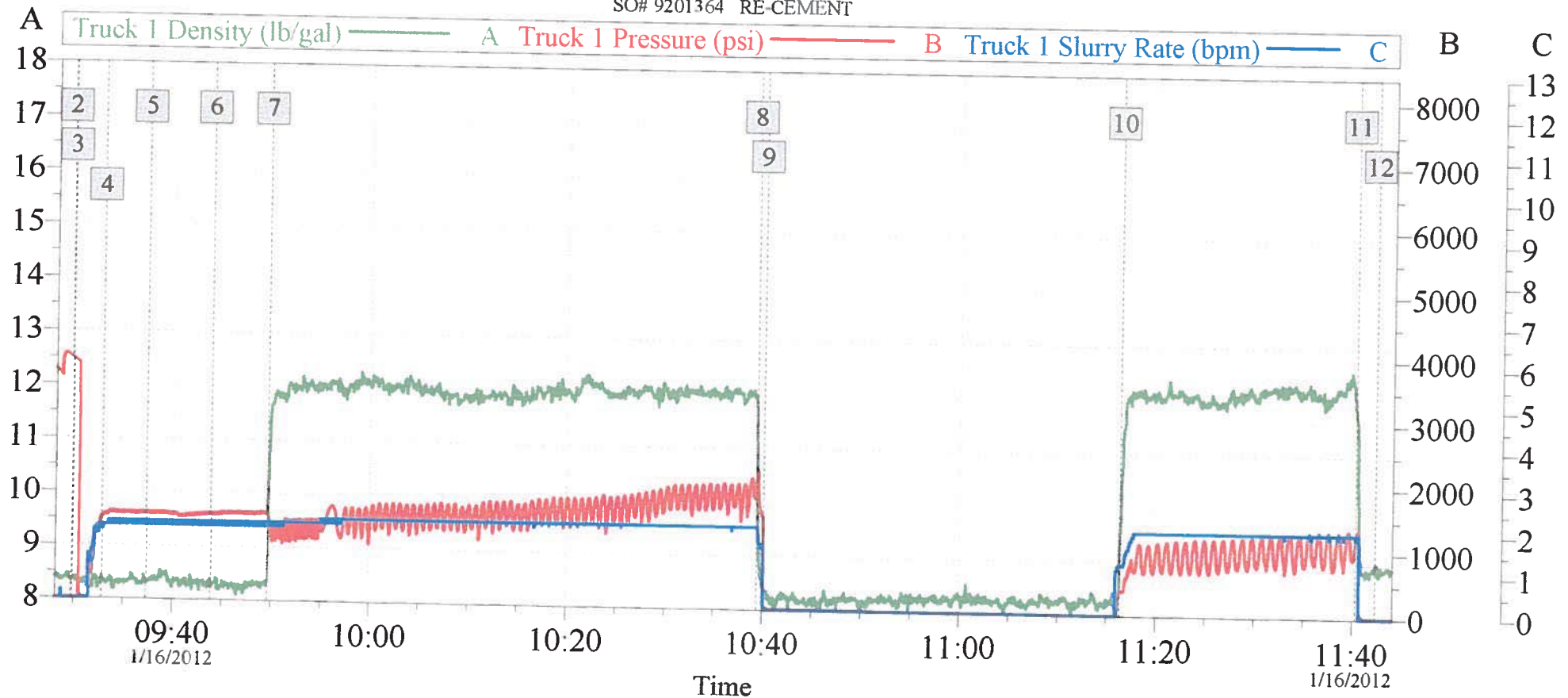
9201364

SUMMIT Version: 7.2.27

Monday, January 16, 2012 12:08:00

# PDC NATIONAL HOG FARM 13-9

SO# 9201364 RE-CEMENT



Global Event Log						
Intersection			TID	TIP	Intersection	
2	Start Job	09:29:43	8.336	3767	3	Test Lines
4	Pump Water	09:32:50	8.361	1299	5	Pump MudFlush III
6	Pump Water	09:43:52	8.318	1350	7	Pump Cement @ 12#
8	Pump Displacement	10:39:26	10.52	2108	9	Shutdown
10	Pump Cement @ 12 #	11:16:21	9.319	367.9	11	Pump Displacement
12	End Job	11:42:22	9.015	10.000		

Customer: PDC  
Well Description: NATIONAL HOG FARM 13-9  
SERVICE SUPERVISOR JONATHAN SNYDER

Job Date: 16-Jan-2012  
UWI: 05-123-20921-00  
SERVICE OPERATOR JAMES WILEY

Sales Order #: 9201364

OptiCem v6.4.9  
16-Jan-12 11:51