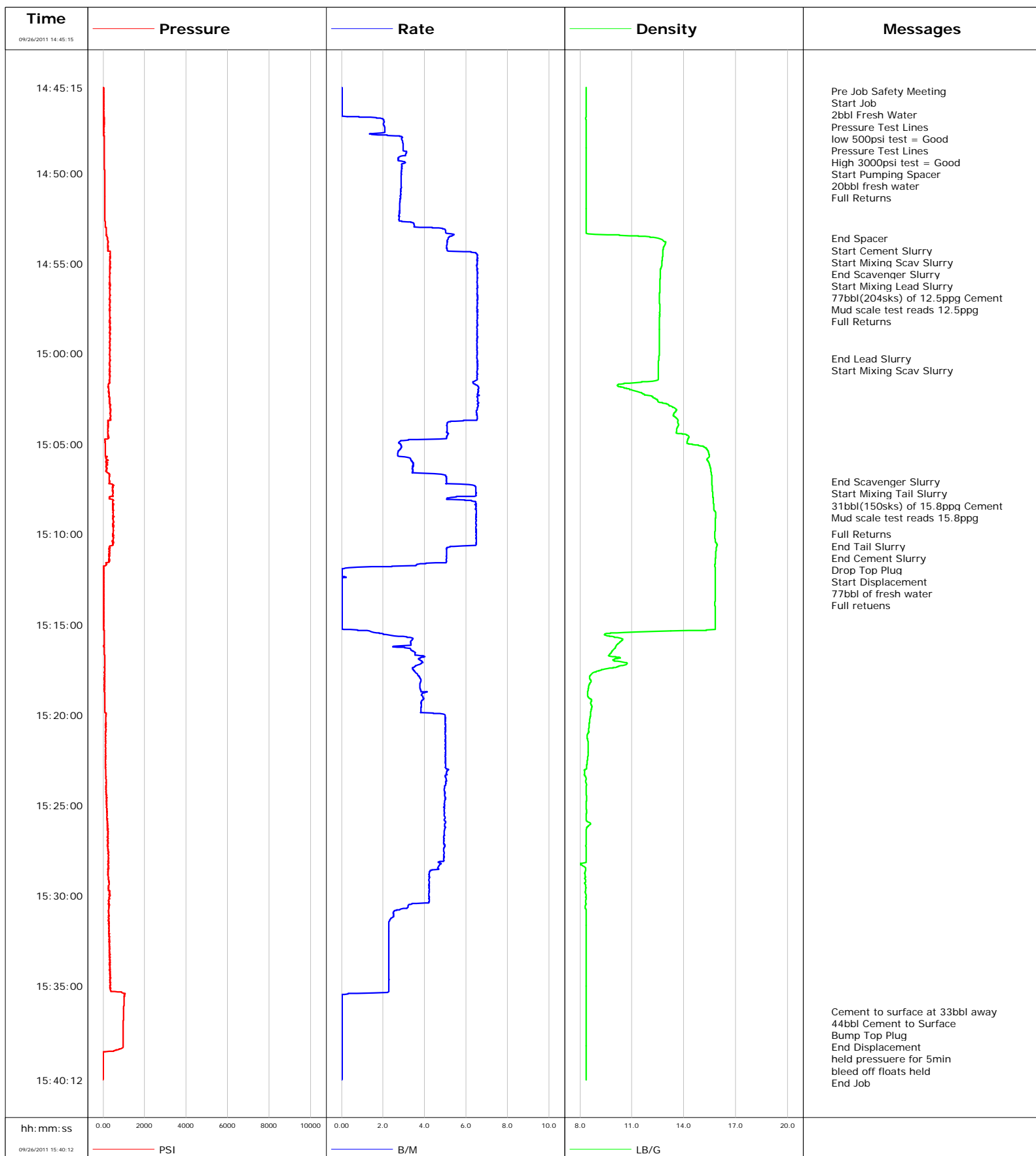


Well Federal 29-4A
Field South Parachute
Engineer Dustin C Krueger
Country United States

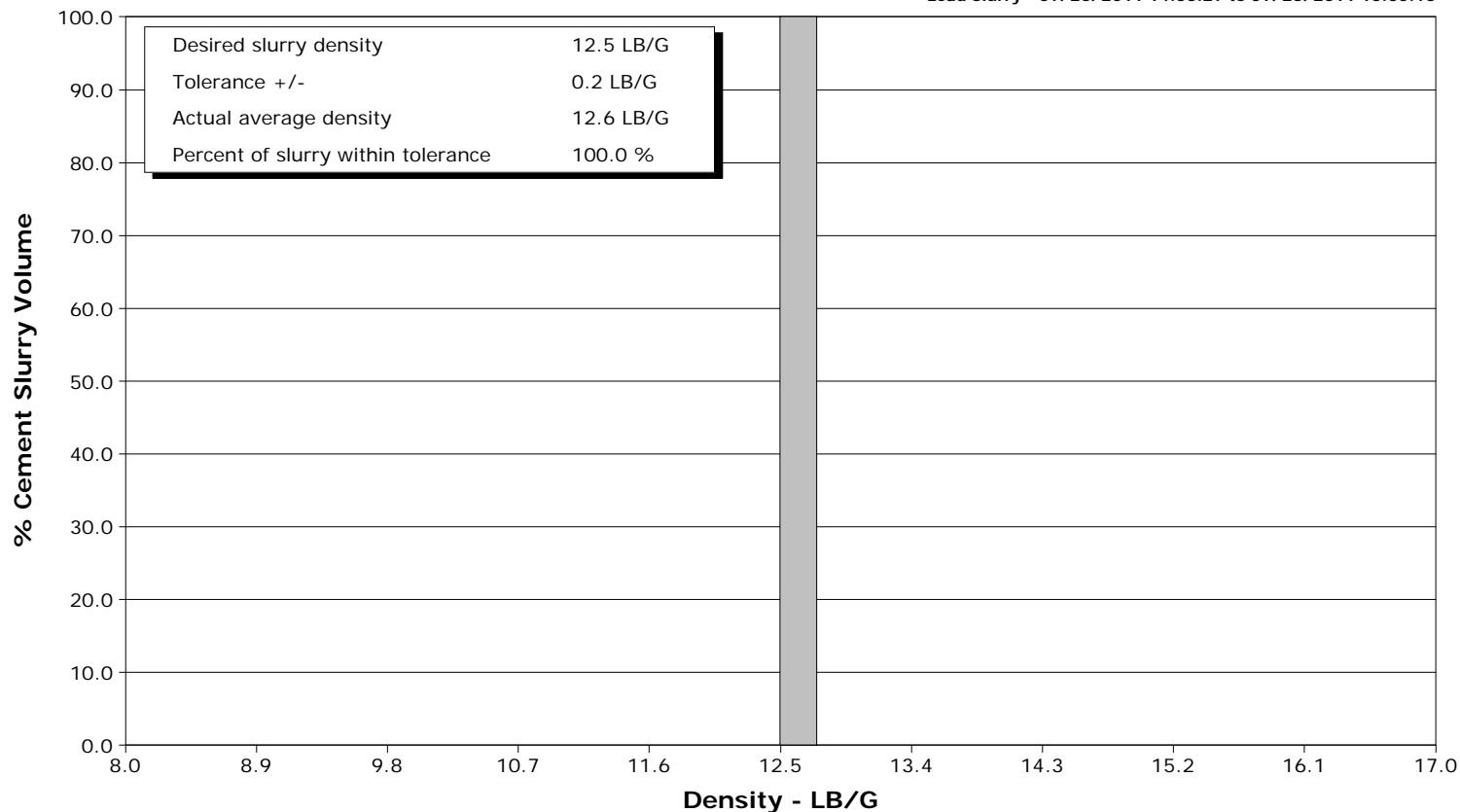
Client Encana Oil Gas
SIR No. 000639748
Job Type 9 5/8 Surface
Job Date 09-26-11



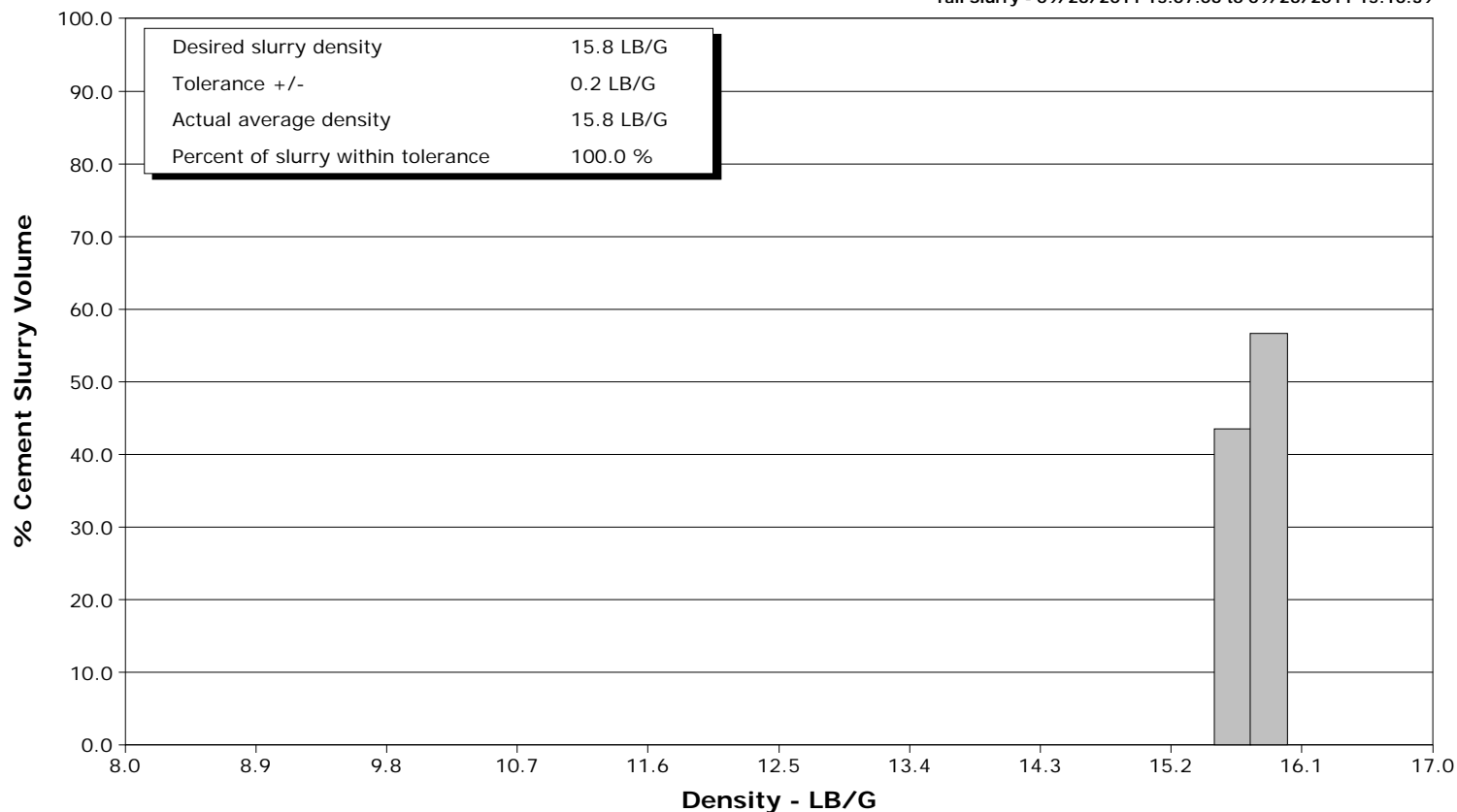
Well Federal 29-4A
Field South Parachute
Engineer Dustin C Krueger
Country United States

Client Encana Oil Gas
SIR No. 000639748
Job Type 9 5/8 Surface
Job Date 09-26-11

Lead Slurry - 09/26/2011 14:55:27 to 09/26/2011 15:00:16



Tail Slurry - 09/26/2011 15:07:06 to 09/26/2011 15:10:39



				Customer Encana Oil & Gas			Job Number 000639748										
Well Federal 29-4A Federal 29-4A			Location (legal) Mamm Creek			Schlumberger Location Grand Junctin			Job Start Sep/26/2011								
Field South Parachute		Formation Name/Type Shale			Deviation deg		Bit Size 12.3 in		Well MD 1040.0 ft		Well TVD 1040.0 ft						
County Garfield		State/Province Colorado			BHP psi		BHST 90 degF		BHCT 81 degF		Pore Press. Gradient lb/gal						
Well Master 0631289091		API/UWI 05045207860000															
Rig Name NABORS M-13		Drilled For Gas		Service Via Land		Casing/Liner											
						Depth, ft		Size, in		Weight, lb/ft		Grade		Thread			
Offshore Zone		Well Class New		Well Type Development		40.0		16.0		65.0		N/A		N/A			
						1040.0		9.6		36.0		K55		8RD			
Drilling Fluid Type Bentonite		Max. Density 9.10 lb/gal		Plastic Viscosity 38.000 cP		Tubing/Drill Pipe											
						T/D		Depth, ft		Size, in		Weight, lb/ft		Grade		Thread	
Service Line Cementing		Job Type 9 5/8 Surface															
Max. Allowed Tub. Press 3000 psi		Max. Allowed Ann. Press 1500 psi		WH Connection Single Cement head		Perforations/Open Hole											
						Top, ft		Bottom, ft		shot/ft		No. of Shots		Total Interval ft			
Service Instructions Provide equipment and services to cement 9 5/8" surface casing per design using: 20bbl fresh water 77bbl (204sks) of 12.5ppg lead 31bbl (150sks) of 15.8ppg tail Drop a Rubber schlumberger top plug 77bbl fresh water displacement						ft		ft									
						ft		ft								Diameter in	
						ft		ft									
		Treat Down Casing		Displacement 76.8 bbl		Packer Type		Packer Depth ft									
		Tubing Vol. 0.0 bbl		Casing Vol. 80.4 bbl		Annular Vol. 61.0 bbl		Openhole Vol. 145.0 bbl									
Casing/Tubing Secured <input checked="" type="checkbox"/>		1 Hole Vol. Circulated prior to Cement <input checked="" type="checkbox"/>				Casing Tools				Squeeze Job							
Lift Pressure 255 psi						Shoe Type Guide				Squeeze Type							
Pipe Rotated <input type="checkbox"/>		Pipe Reciprocated <input type="checkbox"/>				Shoe Depth 1040.0 ft				Tool Type							
No. Centralizers		Top Plugs 1		Bottom Plugs		Stage Tool Type				Tool Depth ft							
Cement Head Type Single						Stage Tool Depth ft				Tail Pipe Size in							
Job Scheduled For Sep/26/2011 11:00		Arrived on Location Sep/26/2010 11:00		Leave Location Sep/26/2010 17:00		Collar Type Float				Tail Pipe Depth ft							
						Collar Depth 993.0 ft				Sqz. Total Vol. bbl							
Date	Time 24-hr clock	Treating Pressure PSI	Flow Rate B/M	Density LB/G	Volume BBL	Message											
09/26/2011	14:45:15	4	0.0	8.35	2.2	Started Acquisition											
09/26/2011	14:45:28	3	0.0	8.35	2.2	Pre Job Safety Meeting											
09/26/2011	14:45:40	3	0.0	8.35	2.2	Start Job											
09/26/2011	14:45:51	3	0.0	8.35	2.2	2bbl Fresh Water											
09/26/2011	14:46:03	4	0.0	8.35	2.2	Pressure Test Lines											
09/26/2011	14:46:08	3	0.0	8.35	2.2	low 500psi test = Good											
09/26/2011	14:46:16	3	0.0	8.35	2.2	Pressure Test Lines											
09/26/2011	14:46:19	3	0.0	8.35	2.2	High 3000psi test = Good											
09/26/2011	14:46:28	3	0.0	8.35	2.2	Start Pumping Spacer											
09/26/2011	14:46:30	3	0.0	8.35	2.2	20bbl fresh water											
09/26/2011	14:46:31	3	0.0	8.35	2.2	Full Returns											
09/26/2011	14:47:45	26	2.1	8.35	3.9												
09/26/2011	14:50:15	72	2.9	8.35	11.0												
09/26/2011	14:52:45	104	3.4	8.35	18.1												
09/26/2011	14:53:37	215	5.1	12.52	22.1	End Spacer											
09/26/2011	14:53:39	214	5.1	12.62	22.2	Start Cement Slurry											
09/26/2011	14:55:15	321	6.5	12.68	31.6												
09/26/2011	14:55:25	326	6.5	12.65	32.7	End Scavenger Slurry											
09/26/2011	14:55:27	314	6.5	12.65	32.9	Start Mixing Lead Slurry											
09/26/2011	14:55:42	323	6.5	12.63	34.6	77bbl(204sks) of 12.5ppg Cement											
09/26/2011	14:55:46	313	6.5	12.63	35.0	Mud scale test reads 12.5ppg											

Well Federal 29-4A Federal 29-4A			Field South Parachute		Job Start Sep/26/2011		Customer Encana Oil & Gas		Job Number 000639748	
Date	Time 24-hr clock	Treating Pressure PSI	Flow Rate B/M	Density LB/G	Volume BBL	Message				
09/26/2011	15:00:15	310	6.5	12.56	64.3					
09/26/2011	15:00:16	310	6.5	12.56	64.4	End Lead Slurry				
09/26/2011	15:00:17	317	6.5	12.56	64.5	Start Mixing Scav Slurry				
09/26/2011	15:02:45	330	6.6	12.91	80.6					
09/26/2011	15:05:15	110	2.8	15.31	93.7					
09/26/2011	15:07:05	316	5.0	15.62	100.3	End Scavenger Slurry				
09/26/2011	15:07:06	316	5.0	15.62	100.4	Start Mixing Tail Slurry				
09/26/2011	15:07:22	500	6.5	15.63	101.9	31bbl(150sks) of 15.8ppg Cement				
09/26/2011	15:07:45	477	6.5	15.67	104.4					
09/26/2011	15:10:00	473	6.5	15.79	118.7	Full Returns				
09/26/2011	15:10:15	491	6.5	15.80	120.3					
09/26/2011	15:10:39	315	5.8	15.91	122.9	End Tail Slurry				
09/26/2011	15:11:01	316	5.0	15.84	124.8	End Cement Slurry				
09/26/2011	15:11:10	316	5.0	15.83	125.5	Drop Top Plug				
09/26/2011	15:11:22	280	5.0	15.83	126.5	Start Displacement				
09/26/2011	15:11:26	321	5.0	15.83	126.9	77bbl of fresh water				
09/26/2011	15:12:45	4	0.0	15.81	128.5					
09/26/2011	15:15:15	16	0.0	15.83	128.5					
09/26/2011	15:17:45	75	3.7	8.65	136.4					
09/26/2011	15:20:15	128	5.0	8.57	146.3					
09/26/2011	15:22:45	111	5.0	8.40	158.8					
09/26/2011	15:25:15	175	4.9	8.37	171.3					
09/26/2011	15:27:45	272	4.9	8.36	183.7					
09/26/2011	15:30:15	278	4.2	8.34	194.8					
09/26/2011	15:32:45	289	2.3	8.36	201.3					
09/26/2011	15:35:15	368	2.3	8.36	207.0					
09/26/2011	15:36:25	991	0.0	8.36	207.4	Cement to surface at 33bbl away				
09/26/2011	15:36:26	990	0.0	8.36	207.4	44bbl Cement to Surface				
09/26/2011	15:36:40	982	0.0	8.36	207.4	Bump Top Plug				
09/26/2011	15:36:41	982	0.0	8.36	207.4	End Displacement				
09/26/2011	15:36:46	980	0.0	8.36	207.4	held pressuere for 5min				
09/26/2011	15:37:45	961	0.0	8.36	207.4					

Post Job Summary

Average Pump Rates, bbl/min					Volume of Fluid Injected, bbl				
Slurry 4.5	N2	Mud 0.0	Maximum Rate 6.6		Total Slurry 108.0	Mud 0.0	Spacer 20.0	N2	
Treating Pressure Summary, psi					Breakdown Fluid				
Maximum 1049	Final -7	Average 250	Bump Plug to 1053	Breakdown 275	Type FreshWater		Volume 248.0 bbl	Density 8.34 lb/gal	
Avg. N2 Percent %		Designed Slurry Volume 108.0 bbl	Displacement 77.0 bbl	Mix Water Temp 75 degF	Cement Circulated to Surface?		<input checked="" type="checkbox"/>	Volume 44.0 bbl	
					Washed Thru Perfs		<input type="checkbox"/>	To ft	
Customer or Authorized Representative Vlad Kochetov			Schlumberger Supervisor Dustin C Krueger			Circulation Lost		<input type="checkbox"/>	Job Completed
						-			-