

**HALLIBURTON**

**WILLIAMS PRODUCTION RMT INC EBUSINE  
DO NOT MAIL - PO BOX 21218  
TULSA, Oklahoma**

GM 44-27

H&P 280

## **Post Job Summary**

### **Cement Surface Casing**

Prepared for: MIKE OLSEN  
Date Prepared: MAR 4, 2011  
Version: 1

Service Supervisor: ROSS, CHARLES

Submitted by:

**HALLIBURTON**

**HALLIBURTON**

*The Road to Excellence Starts with Safety*

Sold To #: 300721	Ship To #: 2839073	Quote #:	Sales Order #: 8007151
Customer: WILLIAMS PRODUCTION RMT INC EBUSINE	Customer Rep: OLSEN, MIKE		
Well Name: GM	Well #: 44-27	API/UWI #: 05-045-19665	
Field: GRAND VALLEY	City (SAP): PARACHUTE	County/Parish: Garfield	State: Colorado
Legal Description:			
Lat: N 39.493 deg. OR N 39 deg. 29 min. 35.61 secs.		Long: W 108.09 deg. OR W -109 deg. 54 min. 36.292 secs.	
Contractor: H&P 280	Rig/Platform Name/Num: H&P 280		
Job Purpose: Cement Surface Casing	Ticket Amount:		
Well Type: Development Well	Job Type: Cement Surface Casing		
Sales Person: KOHL, KYLE	Srvc Supervisor: ROSS, CHARLES	MBU ID Emp #: 453128	

Activity Description	Date/Time	Cht #	Rate bbl/min	Volume bbl		Pressure psig		Comments
				Stage	Total	Tubing	Casing	
Call Out	03/04/2011 16:45							
Pre-Convoy Safety Meeting	03/04/2011 18:50							WITH ALL HES EE'S
Depart from Service Center or Other Site	03/04/2011 19:00							
Arrive at Location from Service Center	03/04/2011 20:10							
Assessment Of Location Safety Meeting	03/04/2011 21:00							WITH ALL HES EE'S
Pre-Rig Up Safety Meeting	03/04/2011 21:20							WITH ALL HES EE'S
Rig-Up Equipment	03/04/2011 21:25							1-F550 PICKUP, 1-ELITE PUMP TRUCK, 1-660 CEMENT BULK TRUCK, 1-HARD LINE TO RIG AND WASH UP ON TOP OF THE PLUG. WASH UP TO THE CELLAR FROM MANIFOLD IF NEEDED. 1 9.625" PLUG CONTAINER.
Pre-Job Safety Meeting	03/05/2011 00:10							WITH ALL HES EE'S AND RIG CREW
Start Job	03/05/2011 00:31							TD 829, 9 5/8 32.3# CASING SET @ 779, SJ 40, FC 739 MW# 10.6, RIG CIRCULATED 30 MIN PRIOR TO CEMENT JOB, HEAD AND CASING CHAINED DOWN BECAUSE OF PSI TO LIFT
Pump Water	03/05/2011 00:32		2	2			50.0	FILL LINES, FRESH WATER



Activity Description	Date/Time	Cht #	Rate bbl/min	Volume bbl		Pressure psig		Comments
				Stage	Total	Tubing	Casing	
Test Lines	03/05/2011 00:35							TEST TO 2500 PSI. PRESSURED UP TO 2670 PSI.
Pump Spacer 1	03/05/2011 00:39		6	20			345.0	FRESH WATER
Pump Tail Cement	03/05/2011 00:48		8	93.9			470.0	250 SKS OF VERSACEM PUMPED @ 12.8 PPG, YIELD 2.11, WATER 11.75
Shutdown	03/05/2011 01:00		7	93.9			330.0	
Drop Plug	03/05/2011 01:03							TOP PLUG, PLUG WENT
Pump Displacement	03/05/2011 01:04		10	48			600.0	FRESH WATER
Slow Rate	03/05/2011 01:11		2	48			180.0	RATE SLOWED 10 BBL PRIOR TO CALCULATED DISPLACEMENT
Bump Plug	03/05/2011 01:16		2	58.2			200.0	PLUG LANDED. PRESSURED UP TO 1050 PSI.
Check Floats	03/05/2011 01:21							FLOATS HELD
End Job	03/05/2011 01:24							GOOD RETURNS THROUGHOUT JOB, NO MOVEMENT OF PIPE THROUGHOUT JOB, 28 BBLs OF CEMENT CIRCULATED TO THE PIT=74.5 SKS
Post-Job Safety Meeting (Pre Rig-Down)	03/05/2011 01:35							WITH ALL HES EE'S
Rig-Down Equipment	03/05/2011 01:45							
Pre-Convoy Safety Meeting	03/05/2011 02:45							WITH ALL HES EE'S
Depart Location for Service Center or Other Site	03/05/2011 02:55							THANKS FOR USING GRAND JUNCTION HALLIBURTON CEMENT DEPARTMENT, CHUCK ROSS AND CREW

*The Road to Excellence Starts with Safety*

Sold To #: 300721		Ship To #: 2839073		Quote #:		Sales Order #: 8007151	
Customer: WILLIAMS PRODUCTION RMT INC EBUSINE				Customer Rep: OLSEN, MIKE			
Well Name: GM		Well #: 44-27		API/UWI #: 05-045-19665			
Field: GRAND VALLEY		City (SAP): PARACHUTE		County/Parish: Garfield		State: Colorado	
Lat: N 39.493 deg. OR N 39 deg. 29 min. 35.61 secs.				Long: W 108.09 deg. OR W -109 deg. 54 min. 36.292 secs.			
Contractor: H&P 280		Rig/Platform Name/Num: H&P 280					
Job Purpose: Cement Surface Casing							
Well Type: Development Well				Job Type: Cement Surface Casing			
Sales Person: KOHL, KYLE				Srv Supervisor: ROSS, CHARLES		MBU ID Emp #: 453128	
Job Personnel							
HES Emp Name	Exp Hrs	Emp #	HES Emp Name	Exp Hrs	Emp #	HES Emp Name	Exp Hrs
REEVES, BRANDON W	7	287883	ROSE, BENJAMIN Keith	7	487022	ROSS, CHARLES Raymond	7
WINKER, STEVEN	7	478776					
Equipment							
HES Unit #	Distance-1 way	HES Unit #	Distance-1 way	HES Unit #	Distance-1 way	HES Unit #	Distance-1 way
10025118	60 mile	10616651C	60 mile	10741259	60 mile	10995025	60 mile
11259883	60 mile						
Job Hours							
Date	On Location Hours	Operating Hours	Date	On Location Hours	Operating Hours	Date	On Location Hours
MAR 5, 2011	5	1					
TOTAL		Total is the sum of each column separately					
Job				Job Times			
Formation Name				Date	Time	Time Zone	
Formation Depth (MD)	Top	Bottom		Called Out	04 - Mar - 2011	16:45	MST
Form Type	BHST			On Location	04 - Mar - 2011	20:10	MST
Job depth MD	829. ft		Job Depth TVD	829. ft		Job Started	05 - Mar - 2011
Water Depth	Wk Ht Above Floor			4. ft		Job Completed	05 - Mar - 2011
Perforation Depth (MD)	From	To		Departed Loc	05 - Mar - 2011	02:55	MST
Well Data							
Description	New / Used	Max pressure psig	Size in	ID in	Weight lbm/ft	Thread	Grade
13 1/2 OPEN HOLE				13.5			
9 5/8 SURFACE CASING	New		9.625	9.001	32.3		H-40
Sales/Rental/3 <sup>rd</sup> Party (HES)							
Description				Qty	Qty uom	Depth	Supplier
PLUG,CMTG,TOP,9 5/8,HWE,8.16 MIN/9.06 MA				1	EA		
Tools and Accessories							
Type	Size	Qty	Make	Depth	Type	Size	Qty
Guide Shoe					Packer		
Float Shoe					Bridge Plug		
Float Collar					Retainer		
Insert Float							
Stage Tool							
Miscellaneous Materials							
Gelling Agt		Conc		Surfactant		Conc	Acid Type
Treatment Fld		Conc		Inhibitor		Conc	Sand Type

Fluid Data



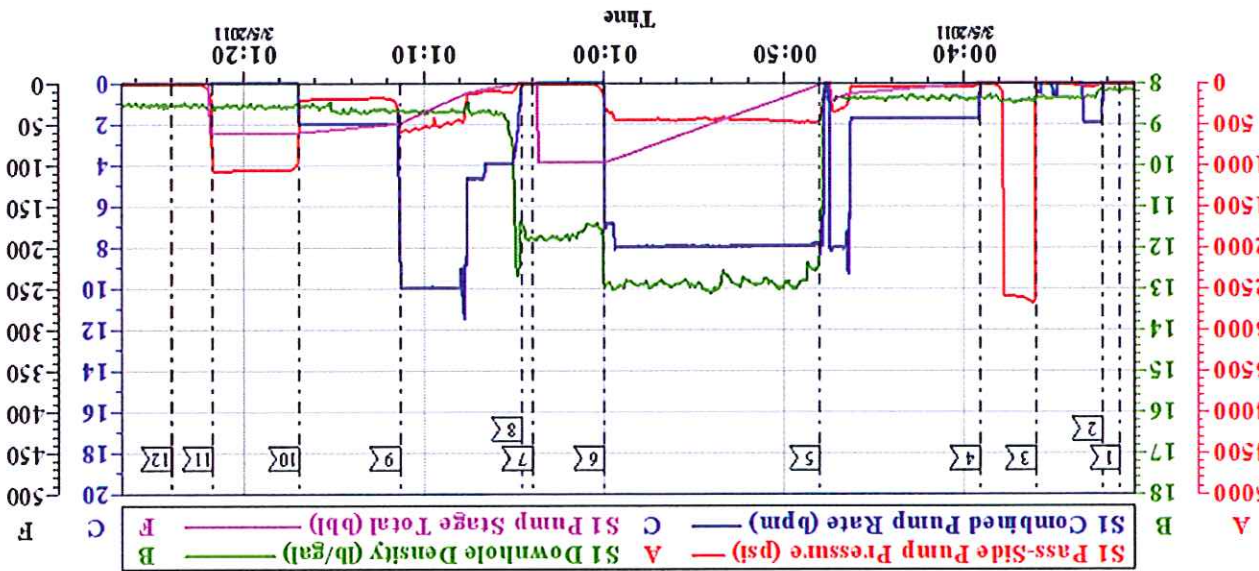
**HALLIBURTON*****Cementing Job Summary***

Stage/Plug #: 1										
Fluid #	Stage Type	Fluid Name	Qty	Qty uom	Mixing Density lbm/gal	Yield ft <sup>3</sup> /sk	Mix Fluid Gal/sk	Rate bbl/min	Total Mix Fluid Gal/sk	
1	Water Spacer		20.00	bbl	8.4	.0	.0	.0		
2	Tail Cement	VERSACEM (TM) SYSTEM (452010)	250.0	sacks	12.8	2.11	11.75		11.75	
3	Displacement Fluid		58.00	bbl	8.4	.0	.0	.0		
Calculated Values		Pressures		Volumes						
Displacement	58.2	Shut In: Instant		Lost Returns	NONE	Cement Slurry	93.9	Pad		
Top Of Cement	SURFACE	5 Min		Cement Returns	28	Actual Displacement	58.2	Treatment		
Frac Gradient		15 Min		Spacers	20	Load and Breakdown		Total Job	173	
Rates										
Circulating	9	Mixing	8	Displacement	10	Avg. Job	8.8			
Cement Left In Pipe	Amount	40 ft	Reason	Shoe Joint						
Frac Ring # 1 @	ID	Frac ring # 2 @	ID	Frac Ring # 3 @	ID	Frac Ring # 4 @	ID			
The Information Stated Herein Is Correct				Customer Representative Signature						

Customer: WILLIAMS	Job Date: 04-Mar-2011	Sales Order #: 8007151
Well Description: OM 44-27	Job Type: SURFACE	ADC Used: YES
Customer Rep: MIKE OLSEN	Service Supervisor: CHUCK ROSS	Operator/Pump: JOHN PINK

11	CHECK FLOATS	01:21:42	1068	12	END JOB	01:24:01	9.000
9	SLOW RATE	01:11:19	877.7	10	PUMP PLUG	01:16:57	1069
7	DROP PLUG	01:03:59	13.00	8	PUMP DISPLACEMENT	01:04:33	600.0
5	PUMP TAIL CEMENT	00:48:01	486.0	6	SHUT DOWN	01:00:00	266.0
3	PRESSURE TEST	00:35:59	2670	4	PUMP FRESH WATER SPACER	00:39:07	455.2
1	START JOB	00:31:20	7.120	2	FILL LINES	00:32:18	1414

Maximum  
SPP  
Local Event Log



# WILLIAMS CEMENT 9 5/8 SURFACE CASING