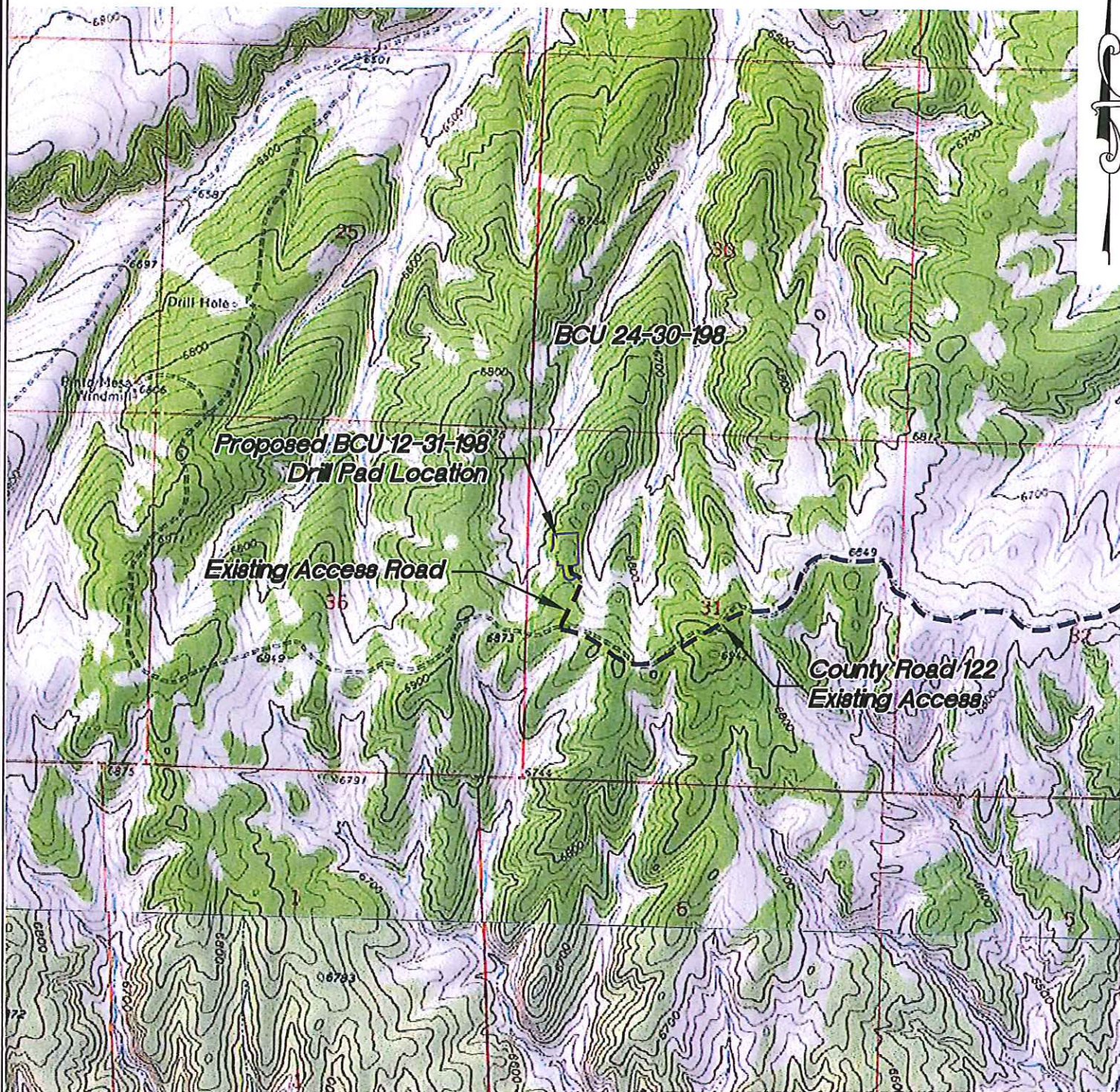


Section 31  
T. 1 N., R 98 W  
6th. P.M.



GRAPHIC SCALE IN FEET  
1 INCH = 2000 FEET

#### ACCESS DESCRIPTION:

FROM THE INTERSECTION OF STATE HIGHWAY 64 AND RIO BLANCO COUNTY ROAD 5 PROCEED SOUTHERLY ALONG COUNTY ROAD 5  $\pm 4.6$  MILES TO THE INTERSECTION WITH A DIRT/GRAVEL ROAD BEING COUNTY ROAD 20 (Mile Marker 36.7) , PROCEED RIGHT IN A WESTERLY DIRECTION ALONG COUNTY ROAD 20  $\pm 4.9$  MILES (Mile Marker 34.9) TO THE INTERSECTION WITH A DIRT/GRAVEL ROAD BEING COUNTY ROAD 122, PROCEED RIGHT IN A WESTERLY TO SOUTHWESTERLY DIRECTION  $\pm 7.1$  MILES TO AN INTERSECTION WITH A DIRT/GRAVEL ROAD (Mile Marker 21.6), PROCEED RIGHT IN A NORTHERLY DIRECTION  $\pm 0.2$  MILES TO THE EXISTING BCU 12-31-198 DRILL PAD LOCATION, AS SHOWN HEREON.

REVISED: 1/25/12

136 East Third Street  
Rifle, Colorado 81650  
Ph. (970) 625-2720  
Fax (970) 625-2773



**BOOKCLIFF**  
Survey Services, Inc.

SCALE: 1" = 2000'  
DATE: 12/20/11  
PLAT: 5 of 7  
PROJECT: Highlands  
DFT: cws

Construction Plan Prepared for:  
**WPXENERGY** WPX Energy Rocky Mountain, LLC

BCU 12-31-198 Drill Pad - Sheet 5  
ACCESS ROAD and TOPO MAP