



Mesa Wireline

CEMENT BOND LOG

Company	ENCANA OIL & GAS (USA) INC
Well	ELMQUIST 4-2-23
Field	WATTENBERG
County	WELD
State	COLORADO
Location:	APL # : 05-123-32009-0000
SEC: 23 TWP: 2N RGE: 68W	Other Services NONE
Permanent Datum	GROUND LEVEL Elevation 4917'
Log Measured From	KELLY BUSHING = 13'
Drilling Measured From	KELLY BUSHING
Elevation	K.B. 4930' D.F. 4931' G.L. 4917'

Date	05 JANUARY 2012
Run Number	ONE
Depth Driller	8188'
Depth Logger	8142'
Bottom Logged Interval	8142'
Top Log Interval	4460'
Open Hole Size	7.875"
Type Fluid	WATER
Density / Viscosity	~8.3#
Max. Recorded Temp.	249 DEG F
Estimated Cement Top	4660'
Time Well Ready	N/A
Time Logger on Bottom	N/A
Equipment Number	10901 PRD 01
Location	AULT, CO
Recorded By	V.FULLER
Witnessed By	G.CUMMINGS
Borehole Record	
Run Number	Bit From To Size Weight From To
ONE	12.25" 0' 840' 8188'
TWO	7.875" 840' 8188'
Tubing Record	
Casing Record	Size Wgt/Ft Top Bottom
Surface String	8.625" 24# 0' 828'
Prot. String	
Production String	4.5" 11.6# 0' 8177'
Liner	

<<< Fold Here >>>

All interpretations are opinions based on inferences from electrical or other measurements and we cannot and do not guarantee the accuracy or correctness of any interpretation, and we shall not, except in the case of gross or willful negligence on our part, be liable or responsible for any loss, costs, damages, or expenses incurred or sustained by anyone resulting from any interpretation made by any of our officers, agents or employees. These interpretations are also subject to our general terms and conditions set out in our current Price Schedule.

Comments

LOG NOT CORRELATED TO ANY OTHER LOG
SHORT JOINT 7254' - 7277'

WE APPRECIATE YOUR BUSINESS, MESA WIRELINE LLC, GRAND JUNCTION CO. (970) 257-0458



TOP PASS

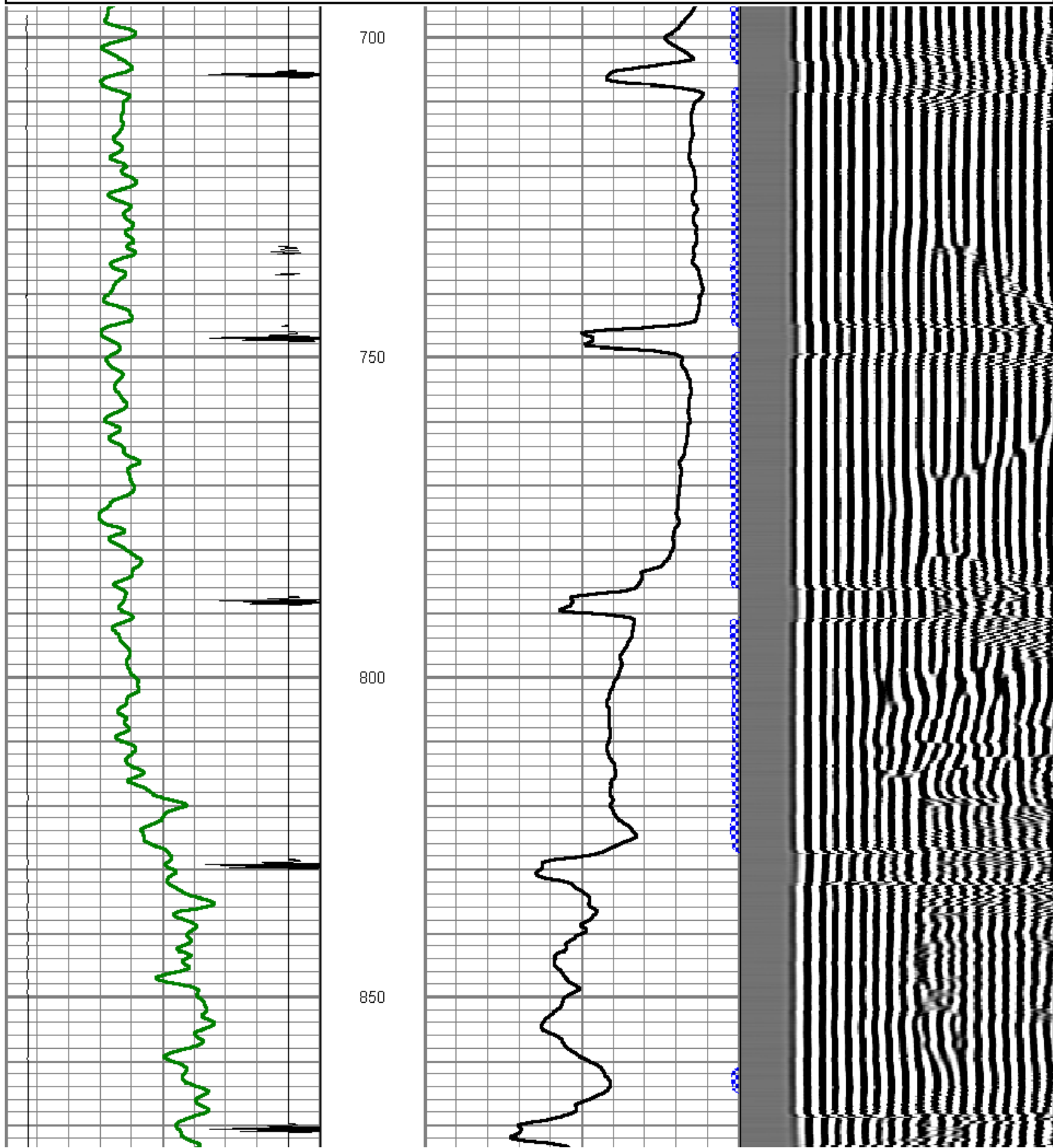
5" = 100'

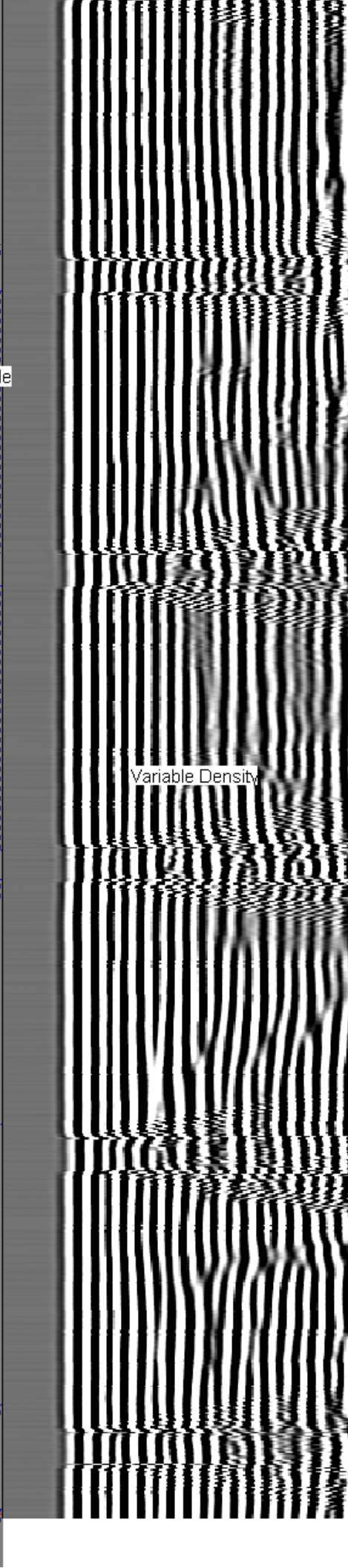
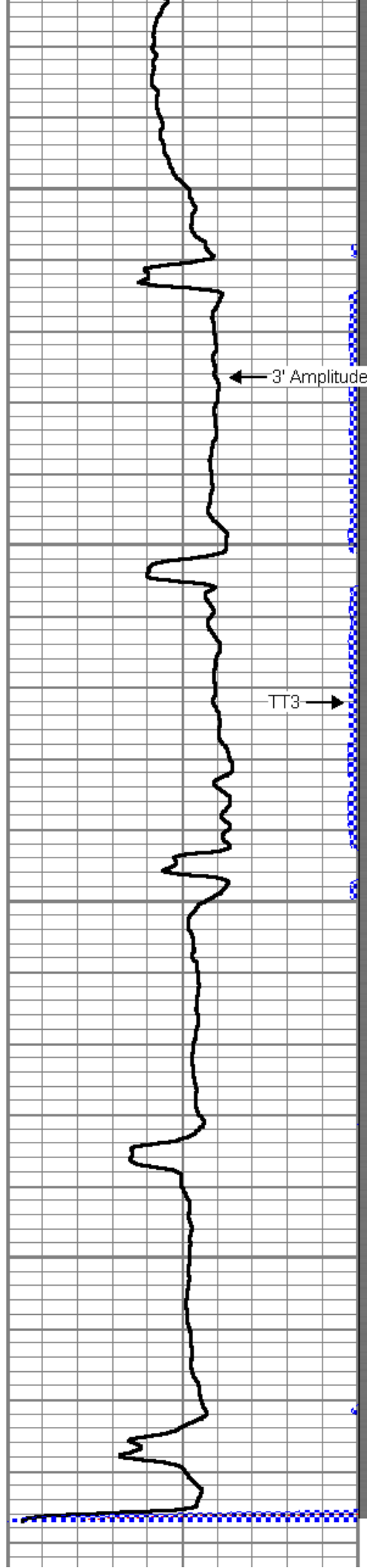
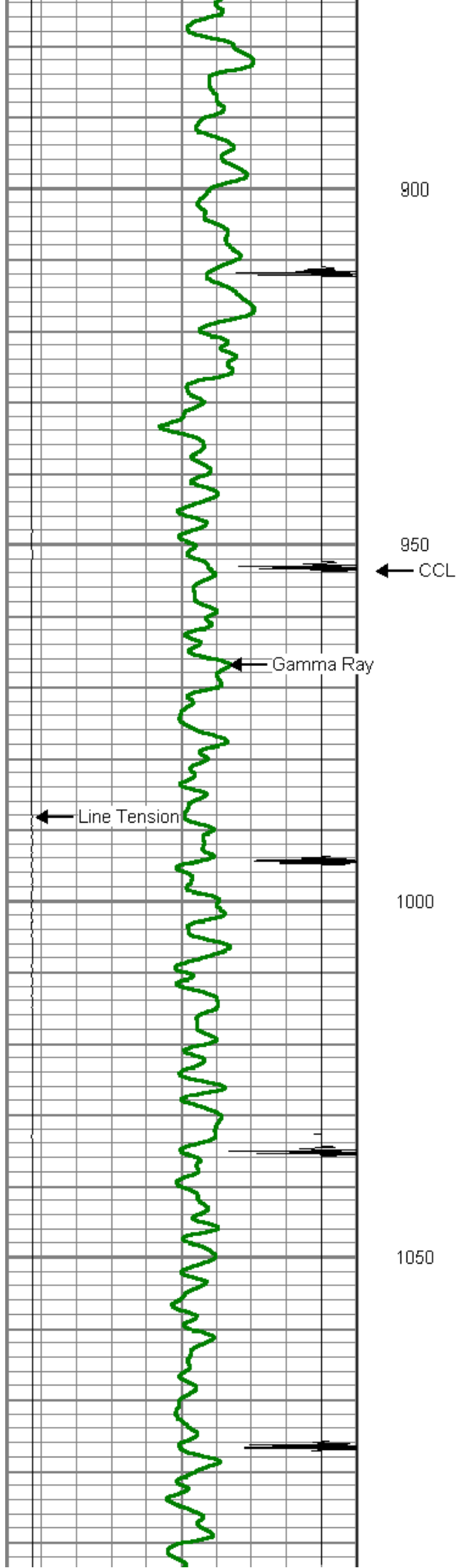
Mesa Wireline

Database File: elmquist 4-2-23.db
 Dataset Pathname: pass12
 Presentation Format: dcbl_prb
 Dataset Creation: Thu Jan 05 11:48:31 2012 by Log SCH 110722
 Charted by: Depth in Feet scaled 1:240

0	Gamma Ray (GAPI)	200
0	LTEN (lb)	5000
9	CCL	-1

0	Amplified Amplitude (mV)	20	200	Variable Density	1200
0	Amplitude (mV)	100			
0	TT3 (usec)	280			





0	Gamma Ray (GAPI)	200	1100	0	Amplified Amplitude (mV)	20	200	Variable Density	1200
0	LTEN (lb)	5000		0	Amplitude (mV)	100			
9	CCL	-1		0	TT3 (usec)	280			

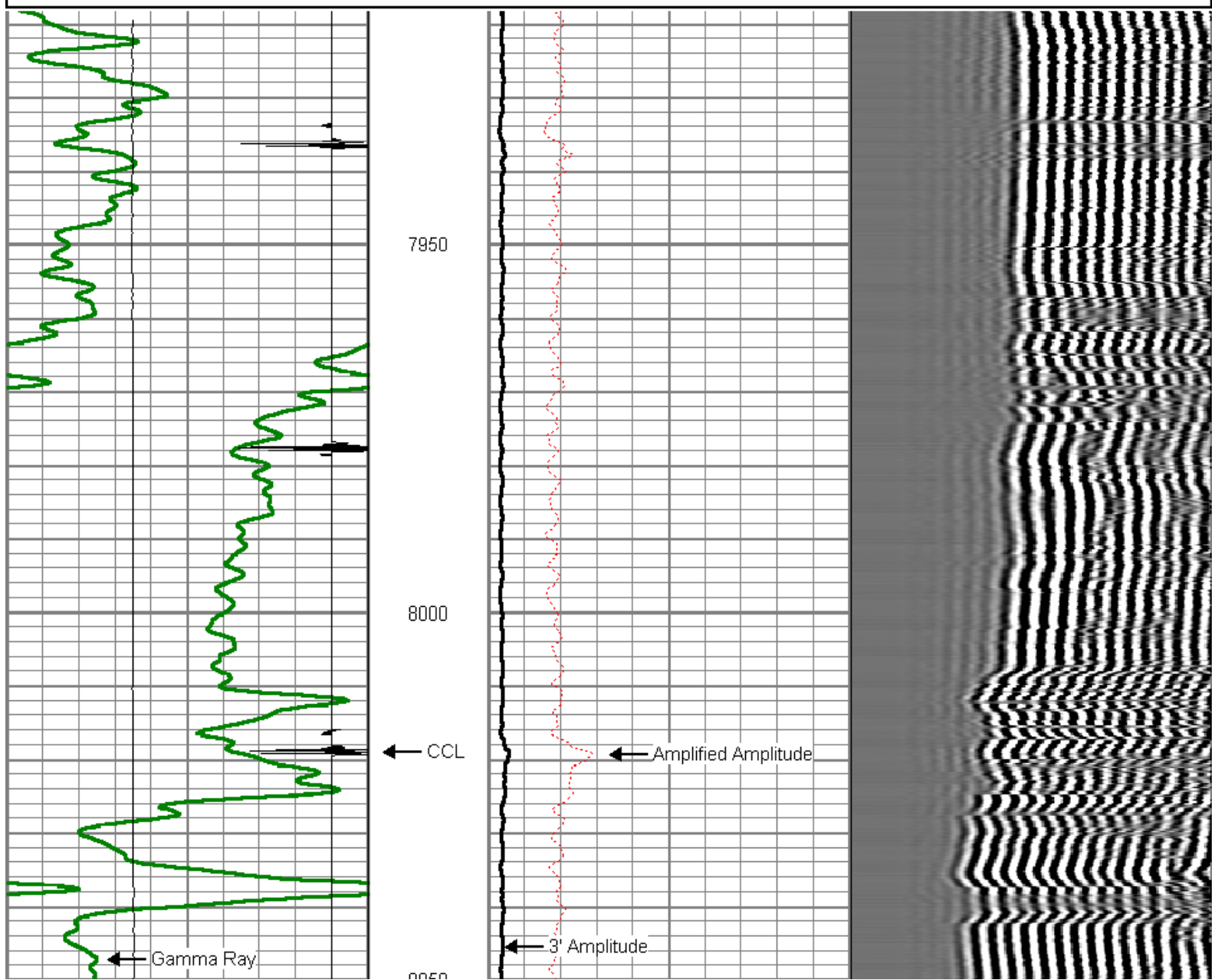


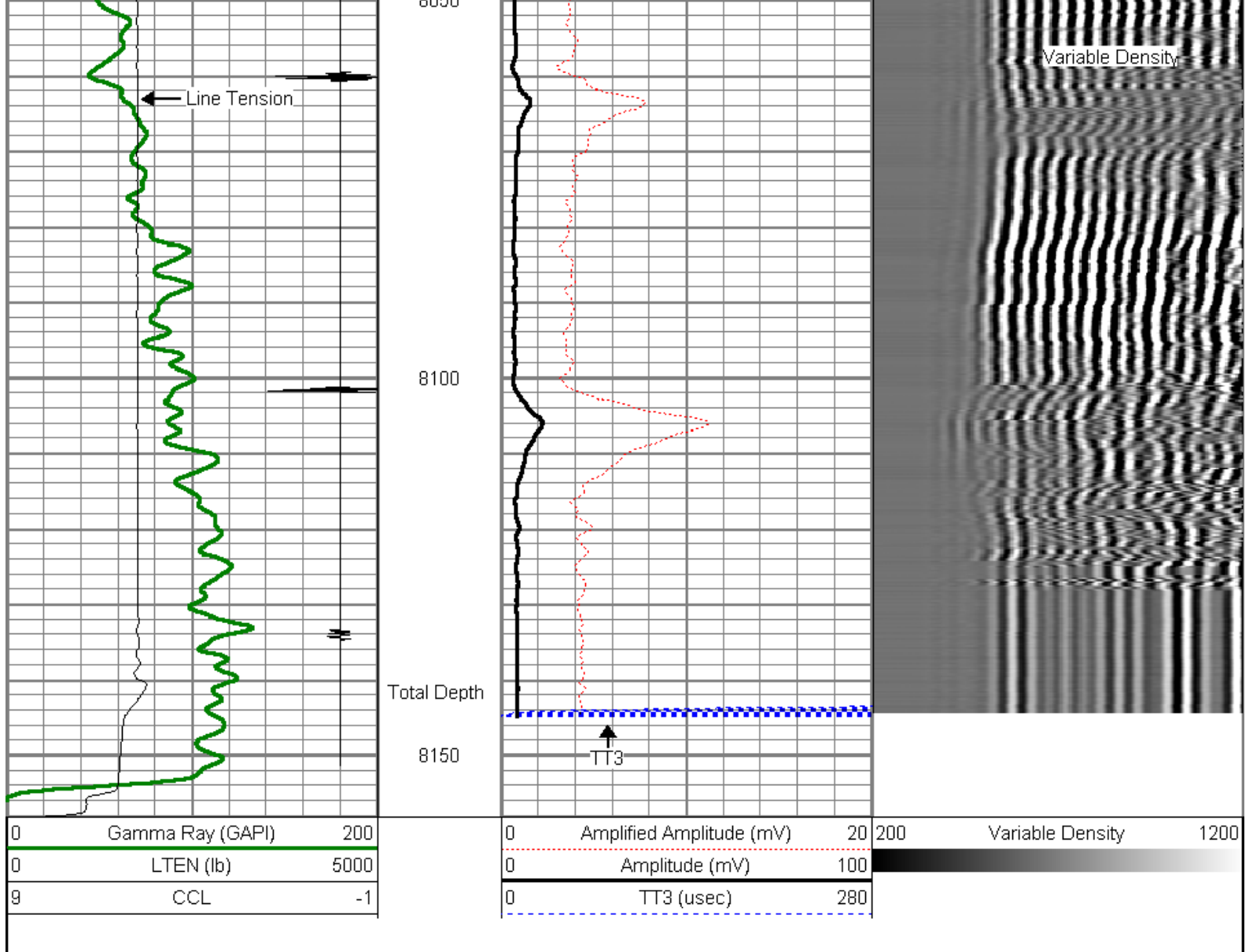
REPAET PASS

5" = 100'

Database File: elmquist 4-2-23.db
Dataset Pathname: pass10
Presentation Format: dcbl_prb
Dataset Creation: Thu Jan 05 10:26:37 2012 by Log SCH 110722
Charted by: Depth in Feet scaled 1:240

0	Gamma Ray (GAPI)	200	0	Amplified Amplitude (mV)	20	200	Variable Density	1200
0	LTEN (lb)	5000	0	Amplitude (mV)	100			
9	CCL	-1	0	TT3 (usec)	280			

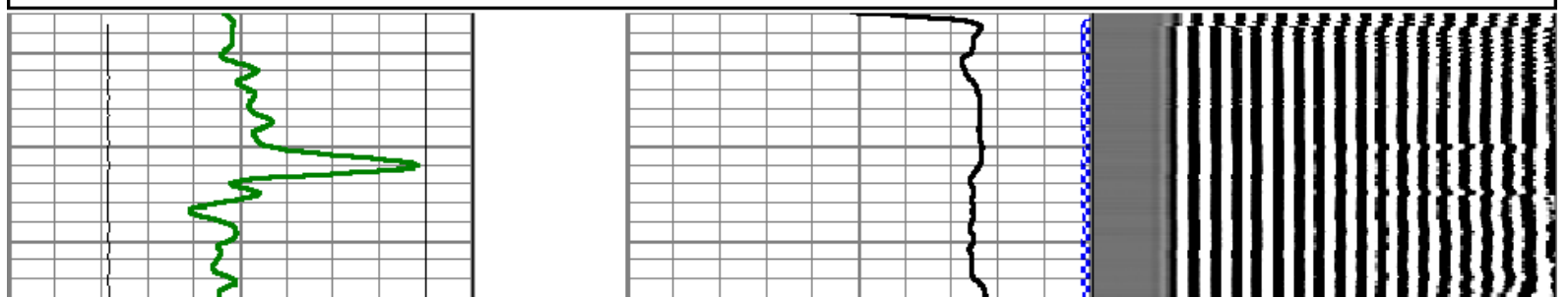
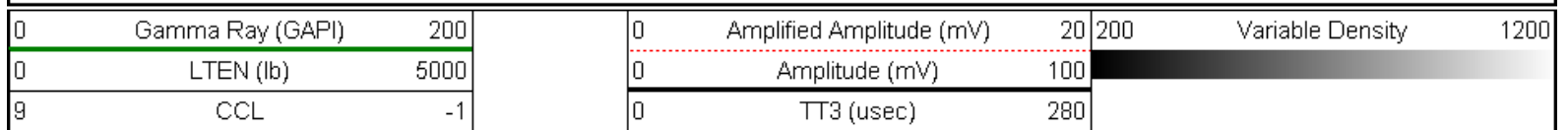


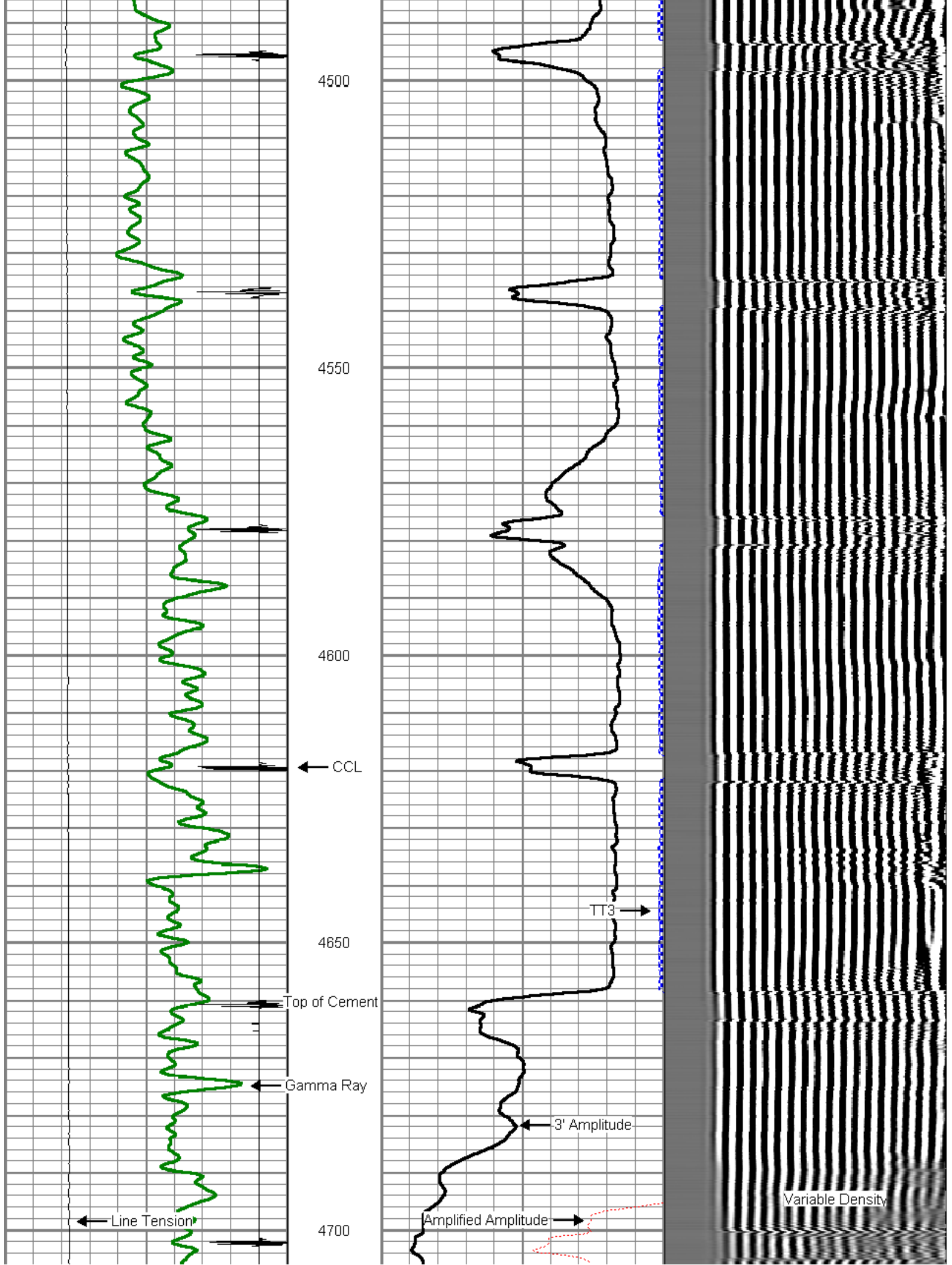


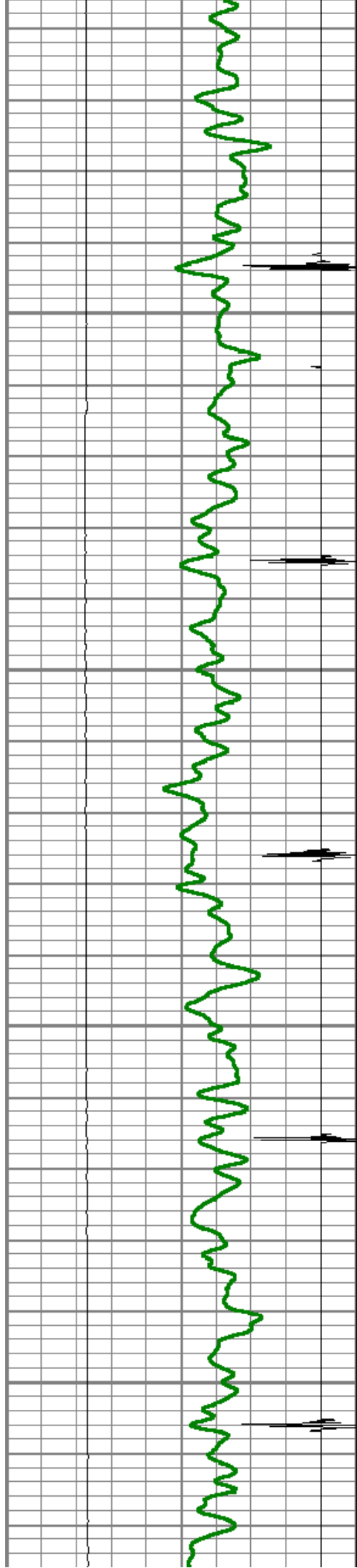
MAIN PASS

5" = 100'

Database File: elmquist 4-2-23.db
 Dataset Pathname: pass11.2
 Presentation Format: dcbl_prb
 Dataset Creation: Thu Jan 05 11:37:30 2012 by Calc SCH 110722
 Charted by: Depth in Feet scaled 1:240





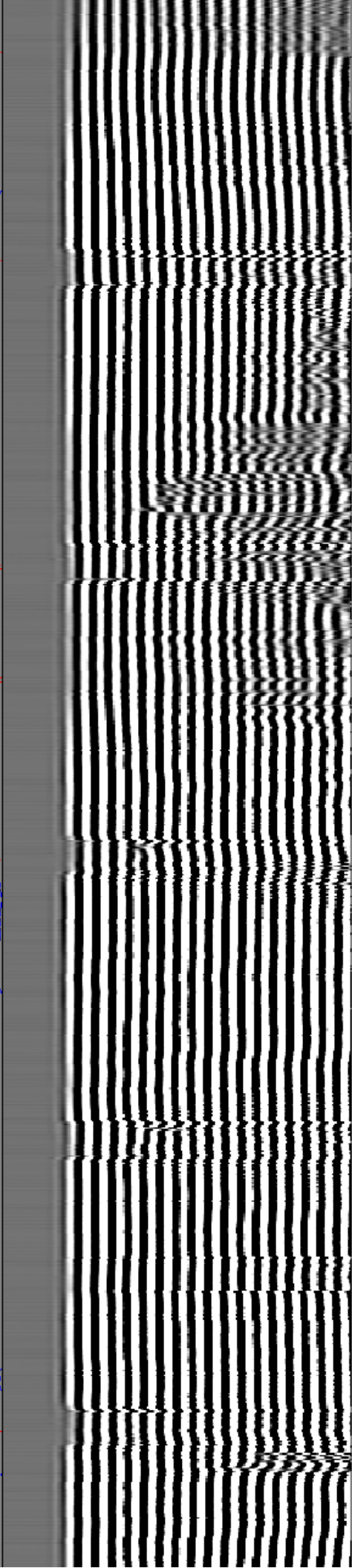
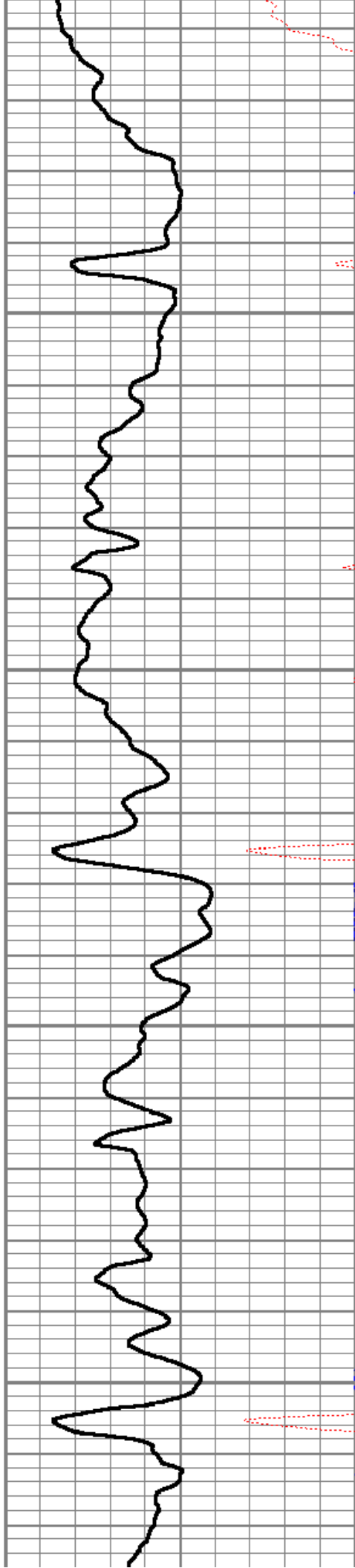


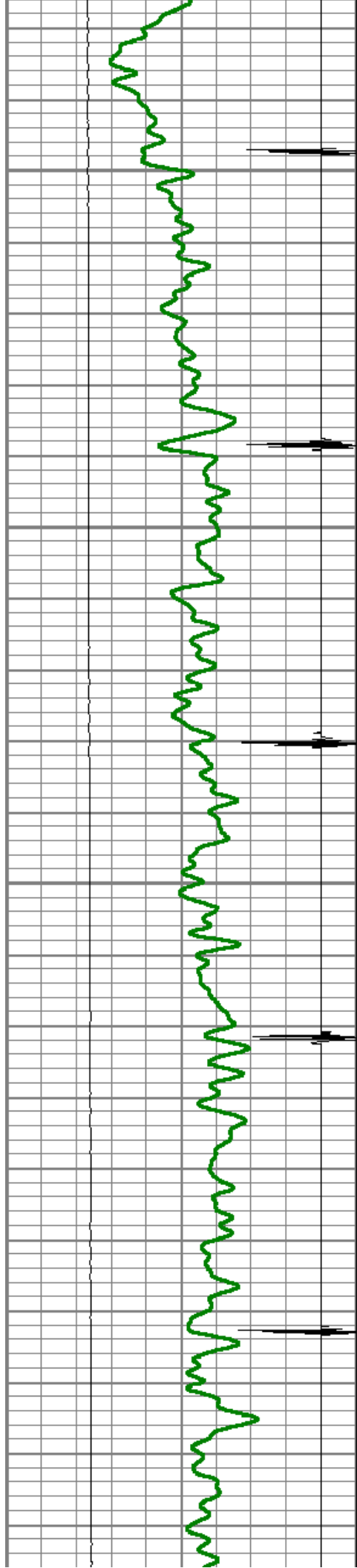
4750

4800

4850

4900



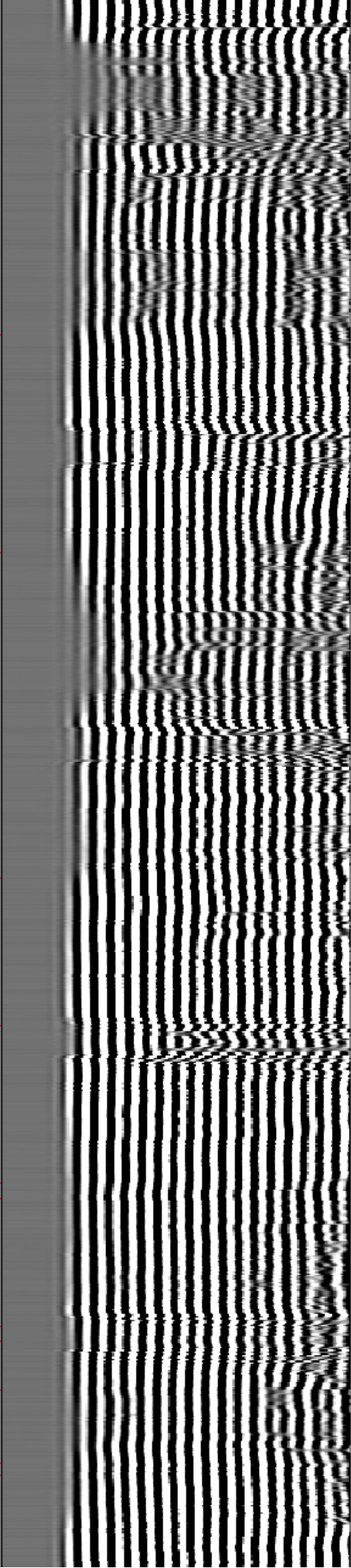
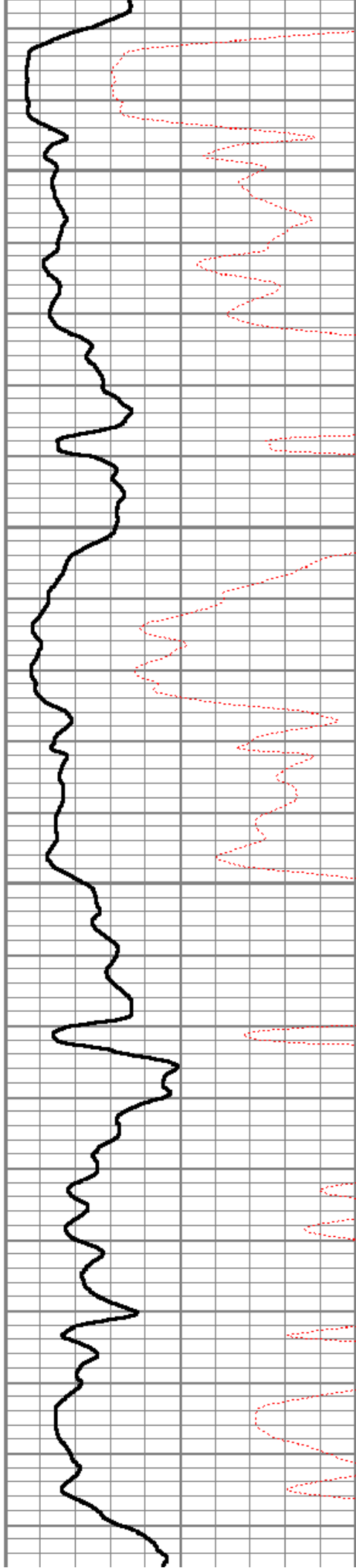


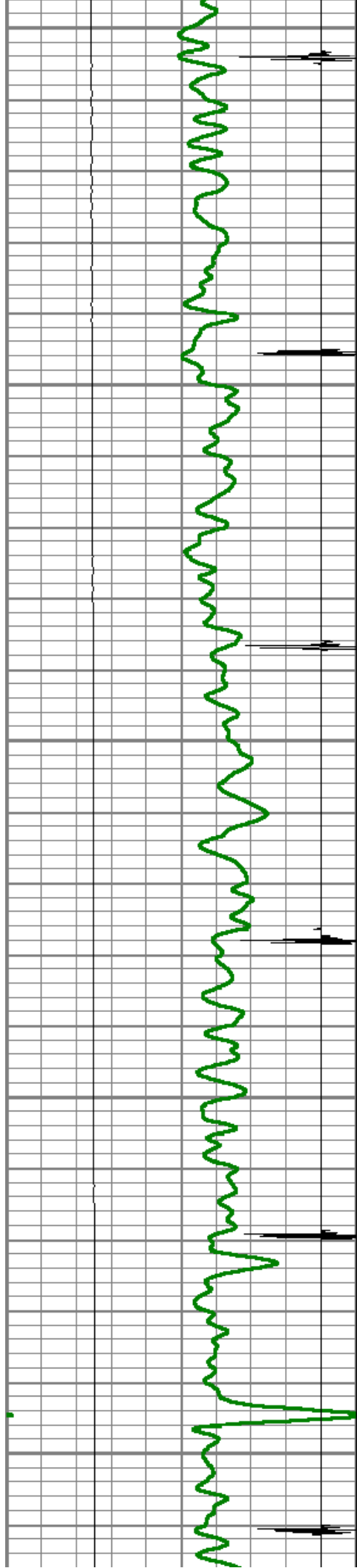
4950

5000

5050

5100





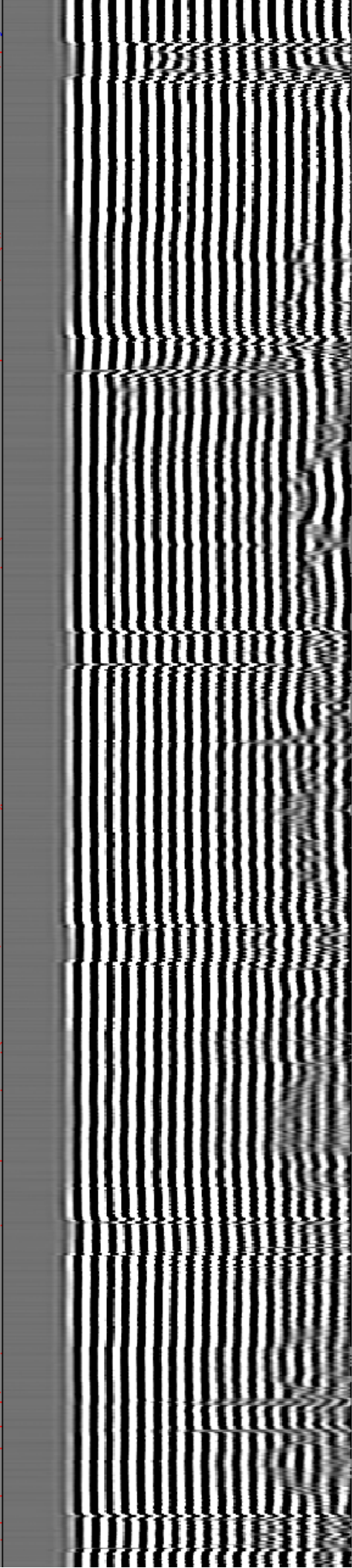
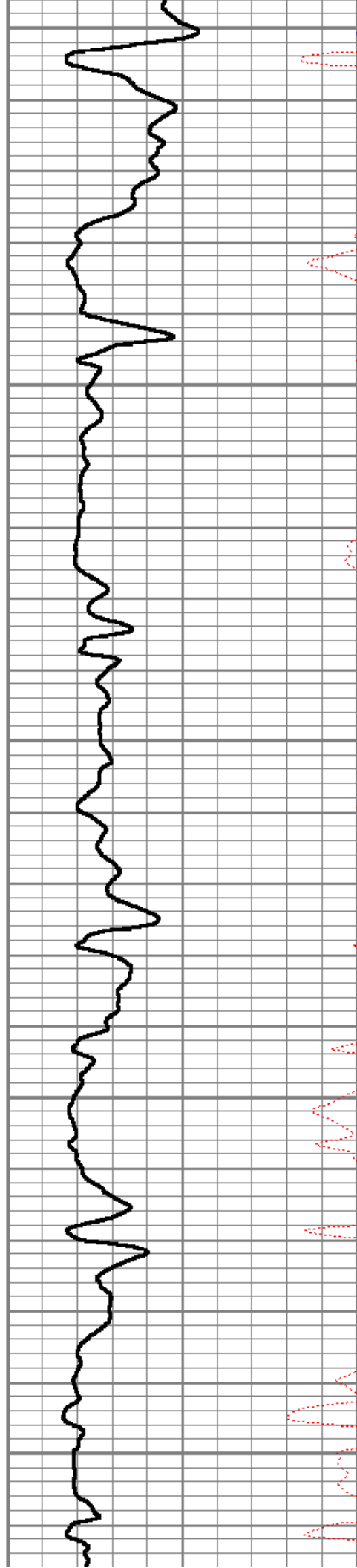
5150

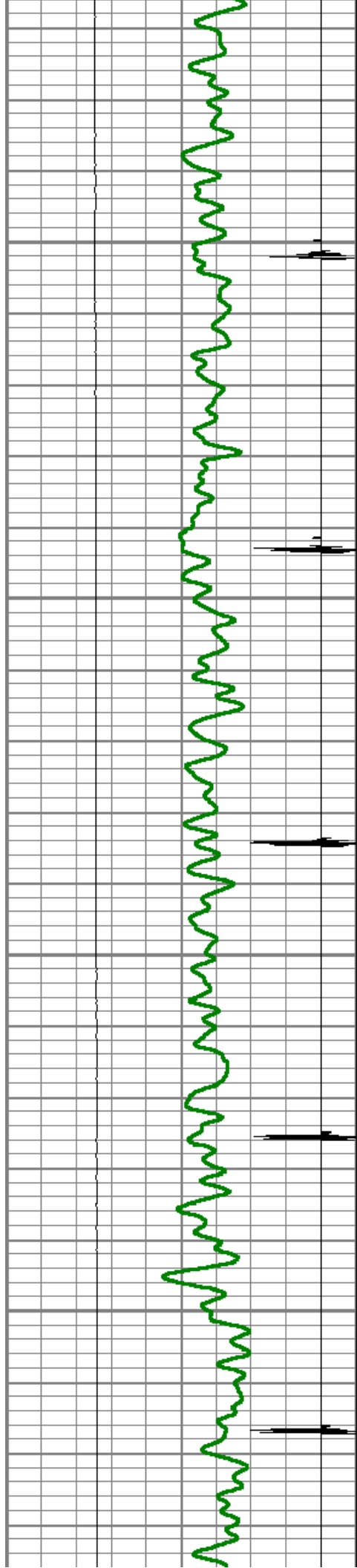
5200

5250

5300

5350



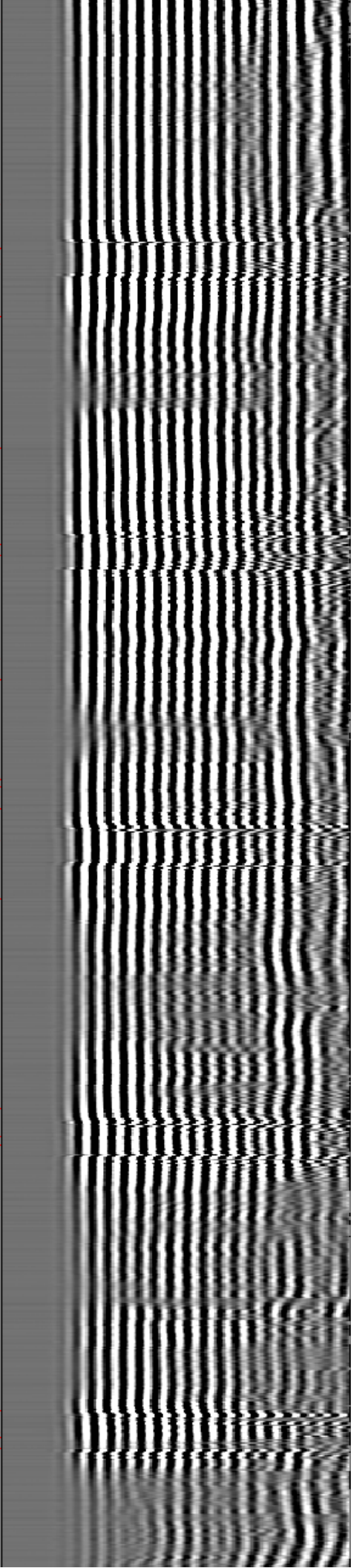
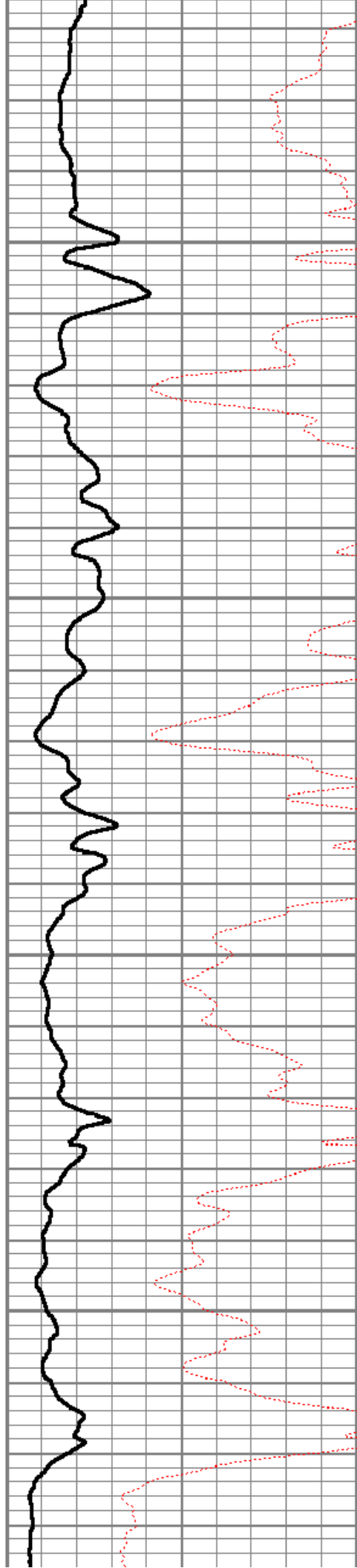


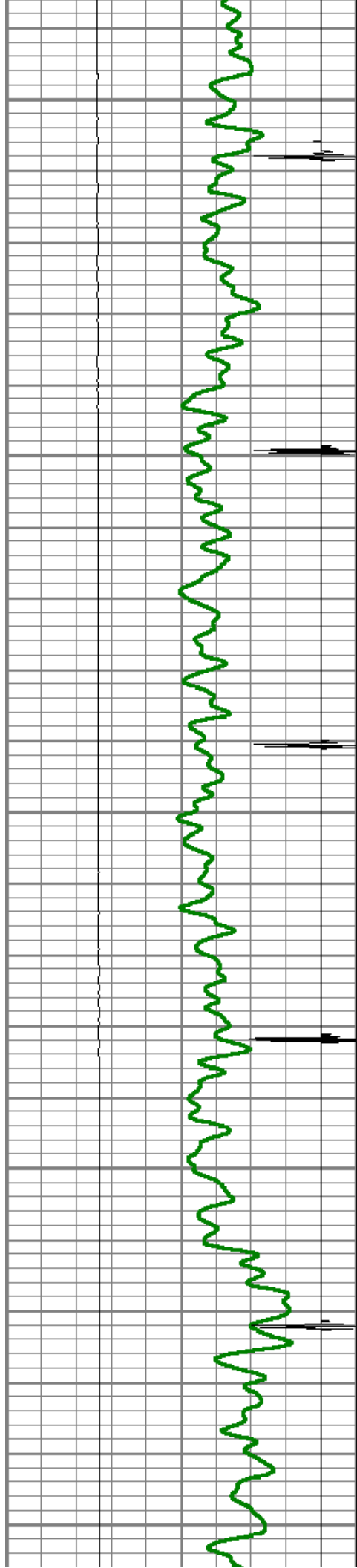
5400

5450

5500

5550





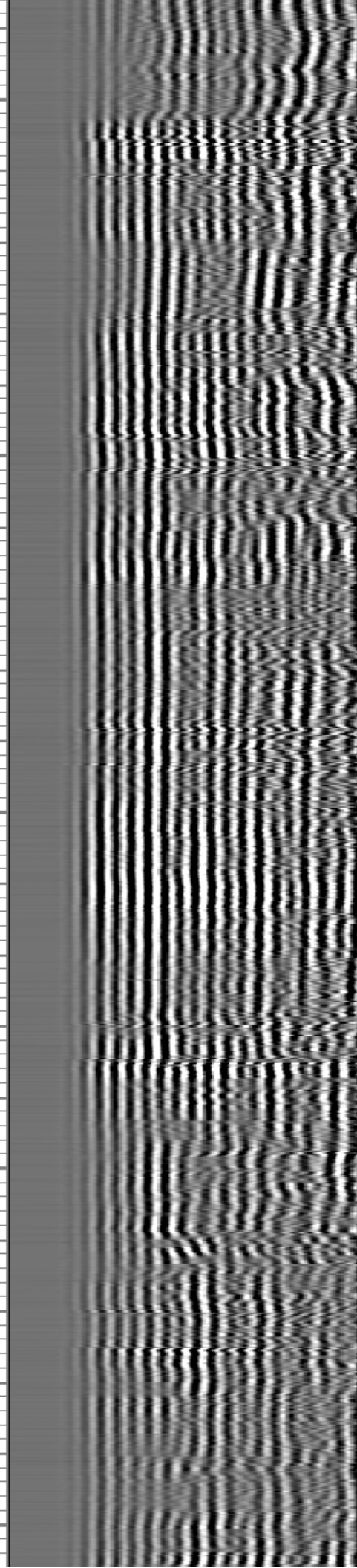
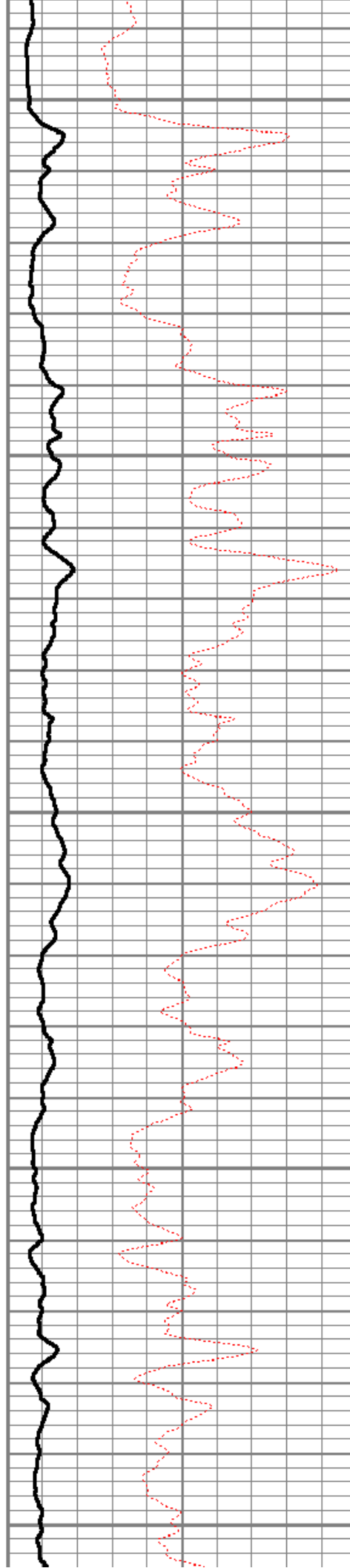
5600

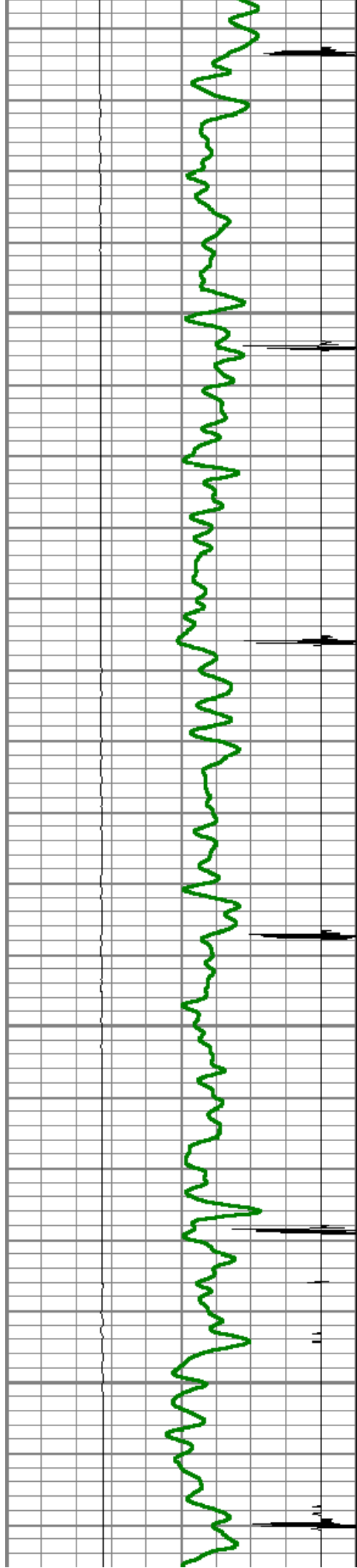
5650

5700

5750

5800



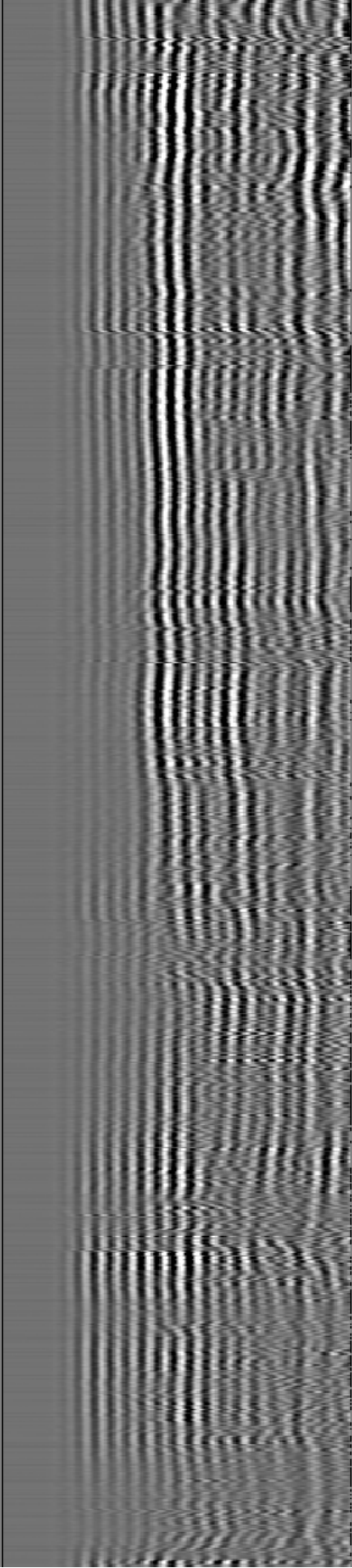
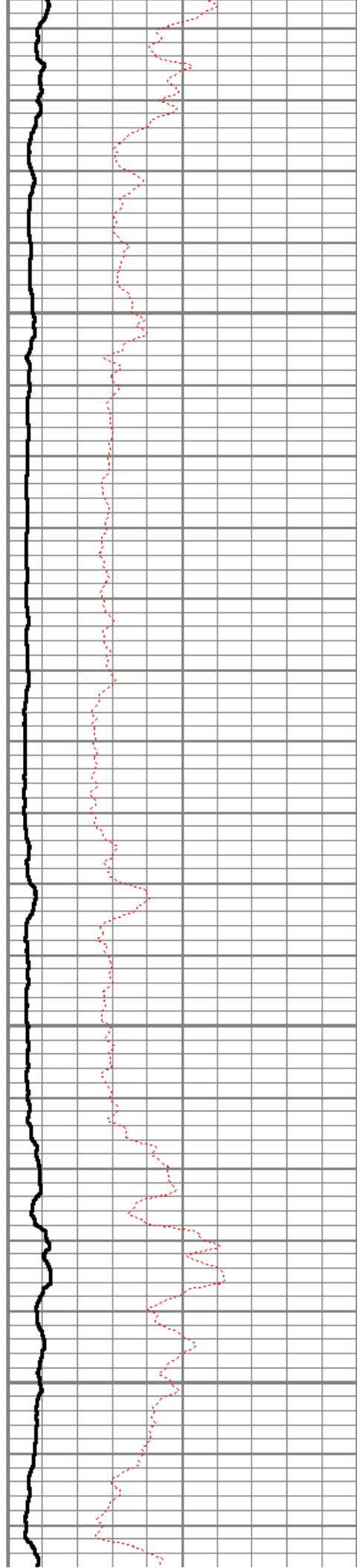


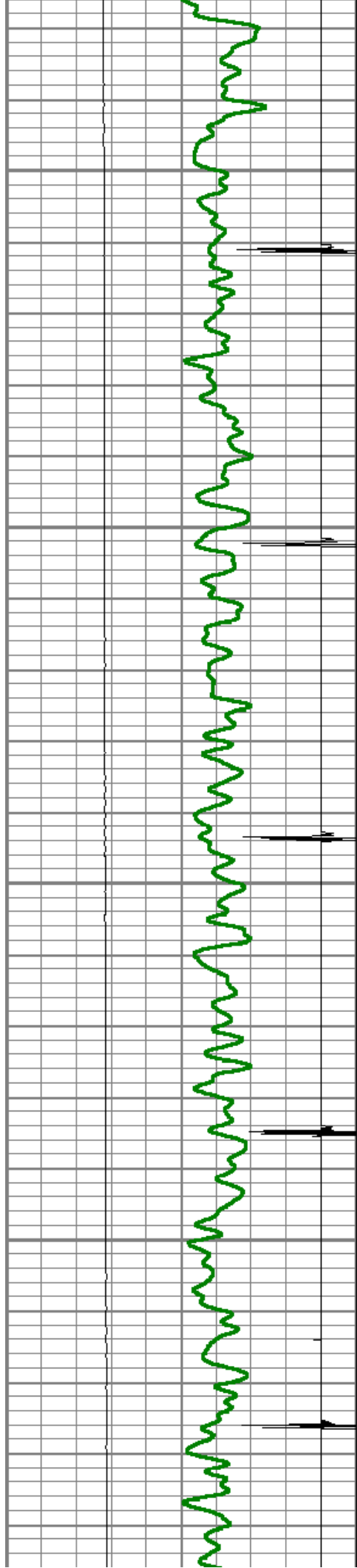
5850

5900

5950

6000



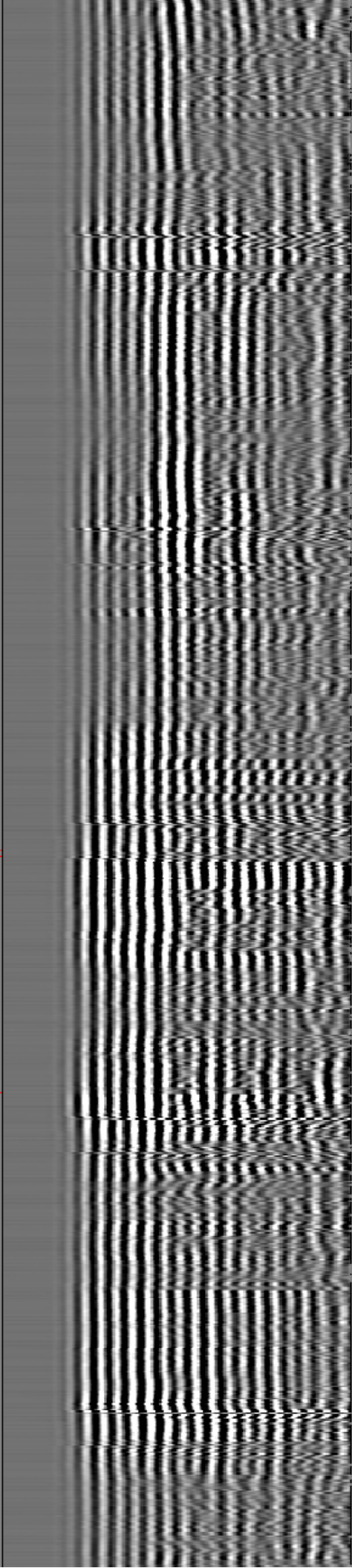
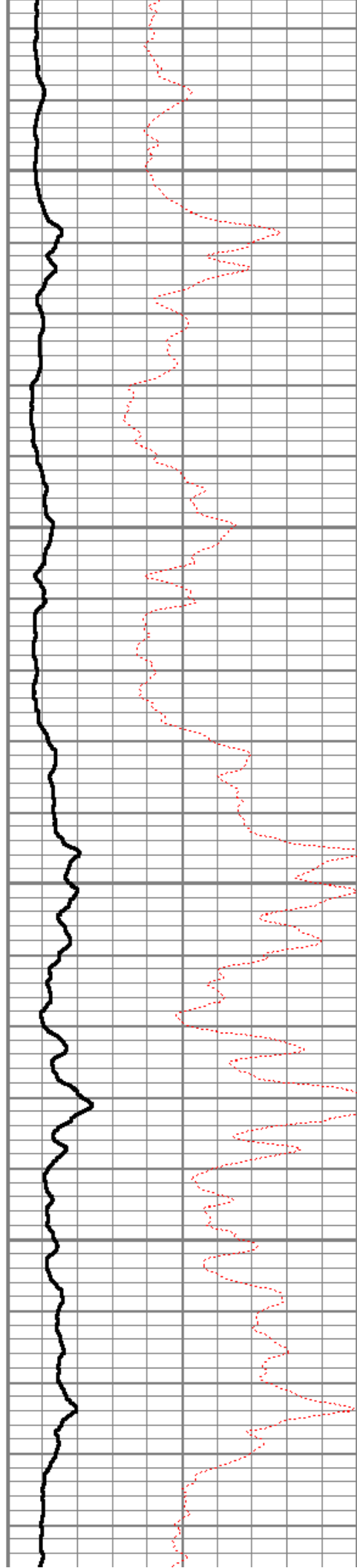


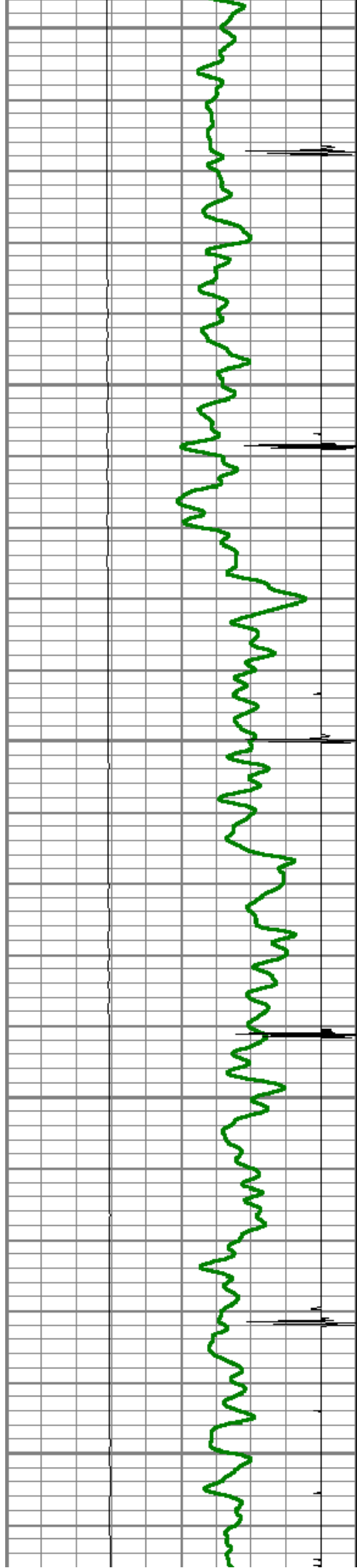
6050

6100

6150

6200





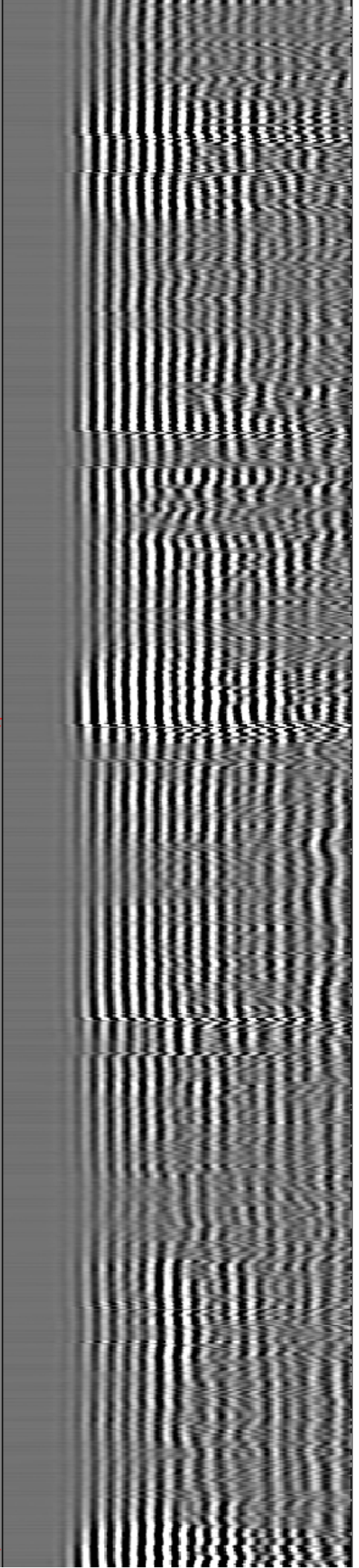
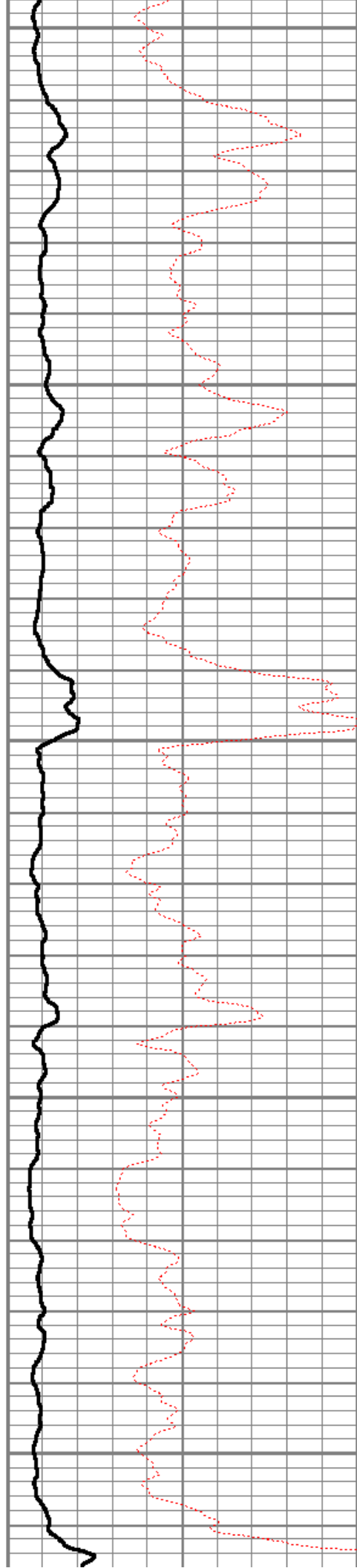
6250

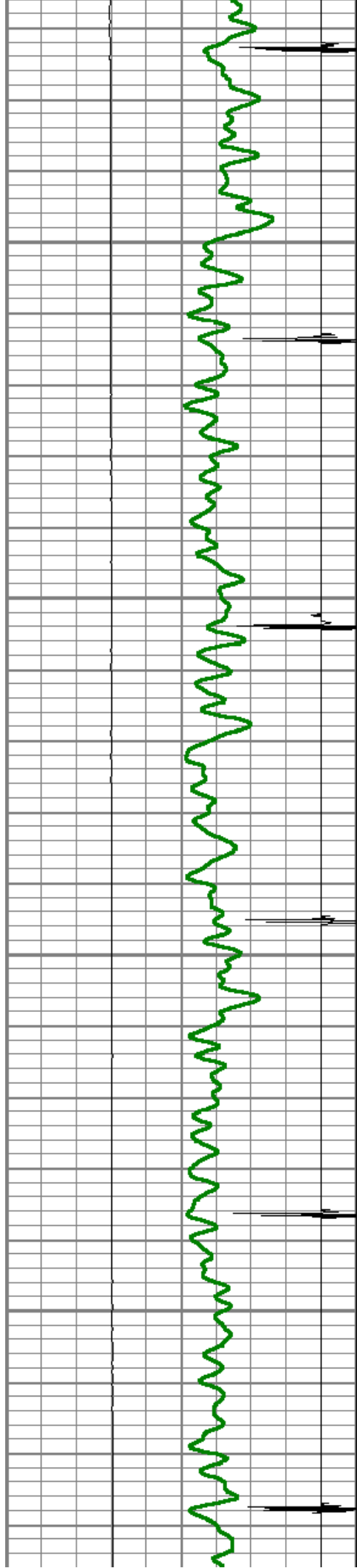
6300

6350

6400

6450



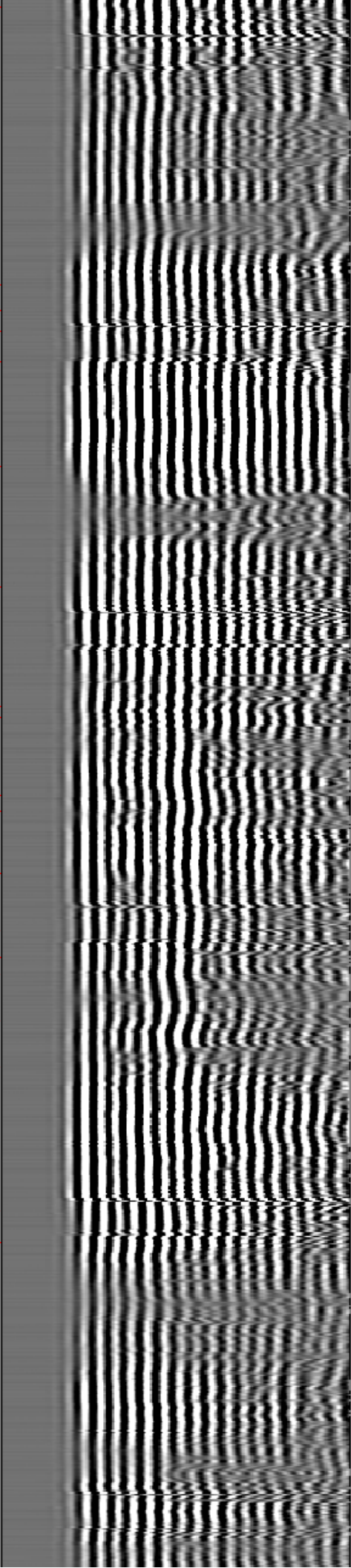
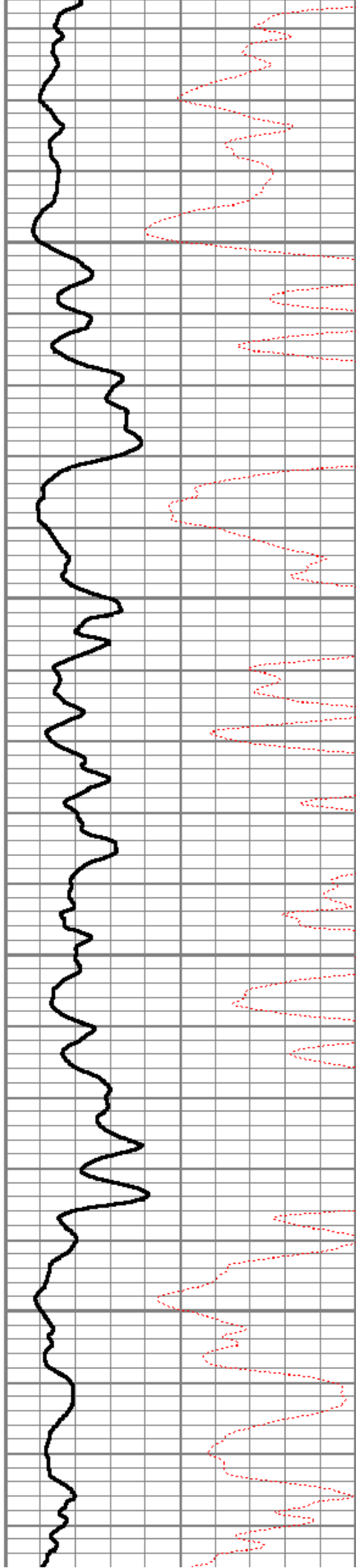


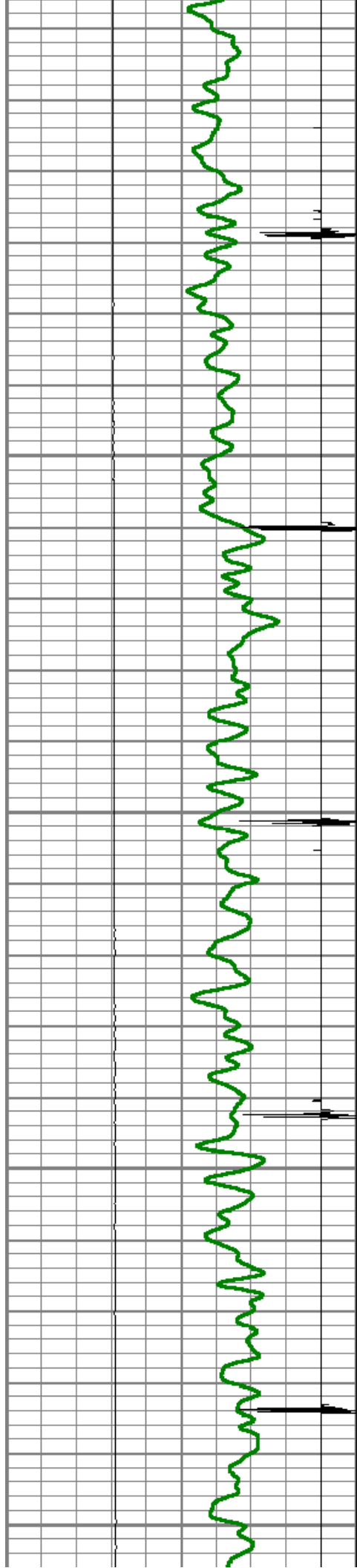
6500

6550

6600

6650





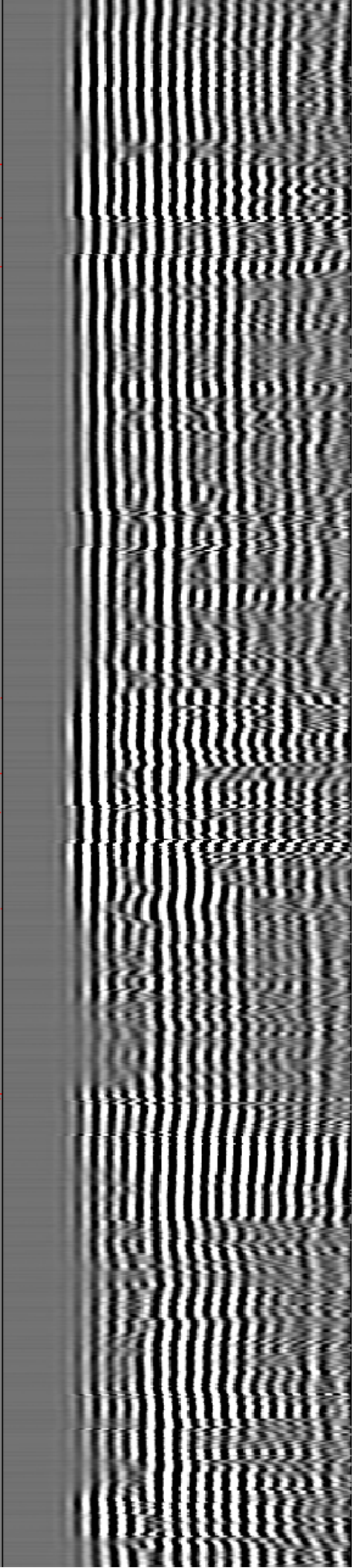
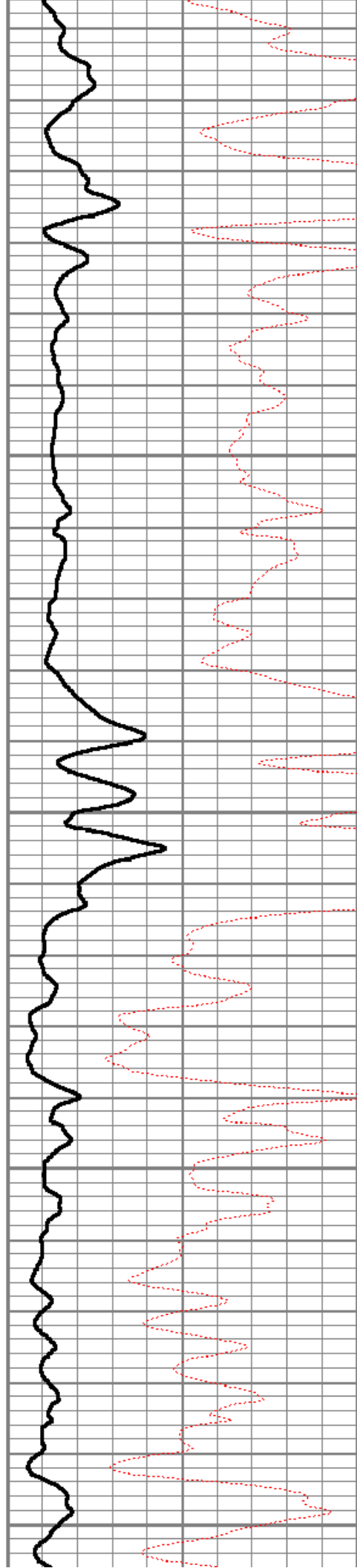
6700

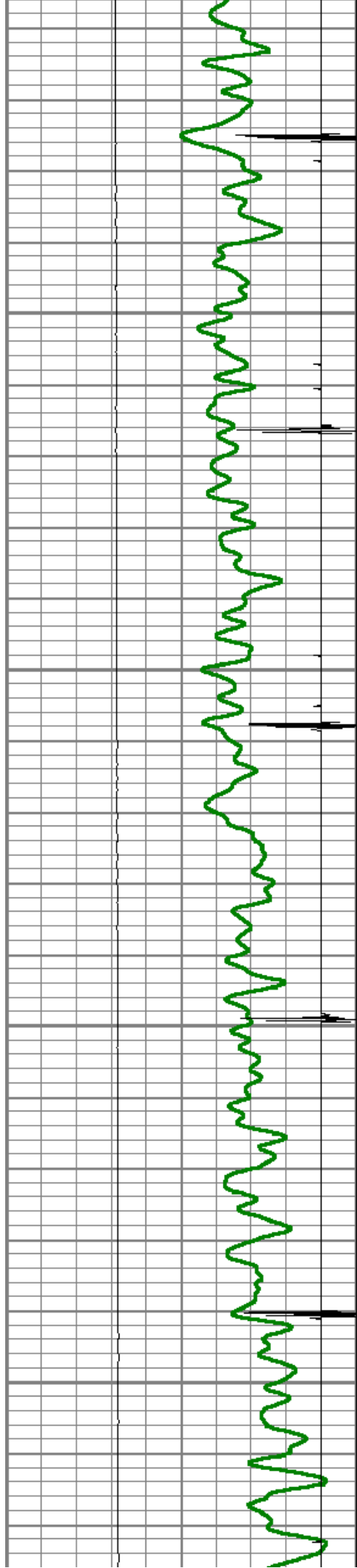
6750

6800

6850

6900



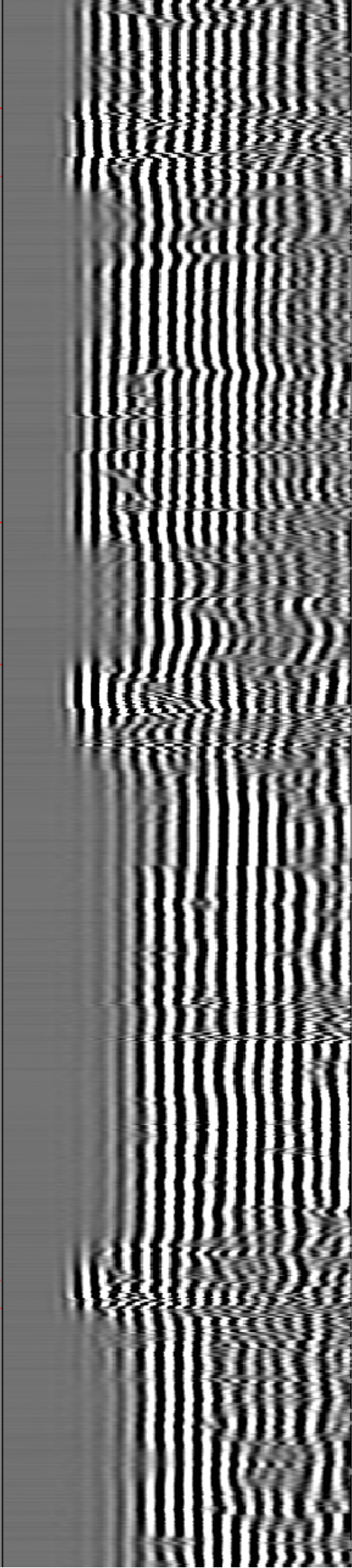
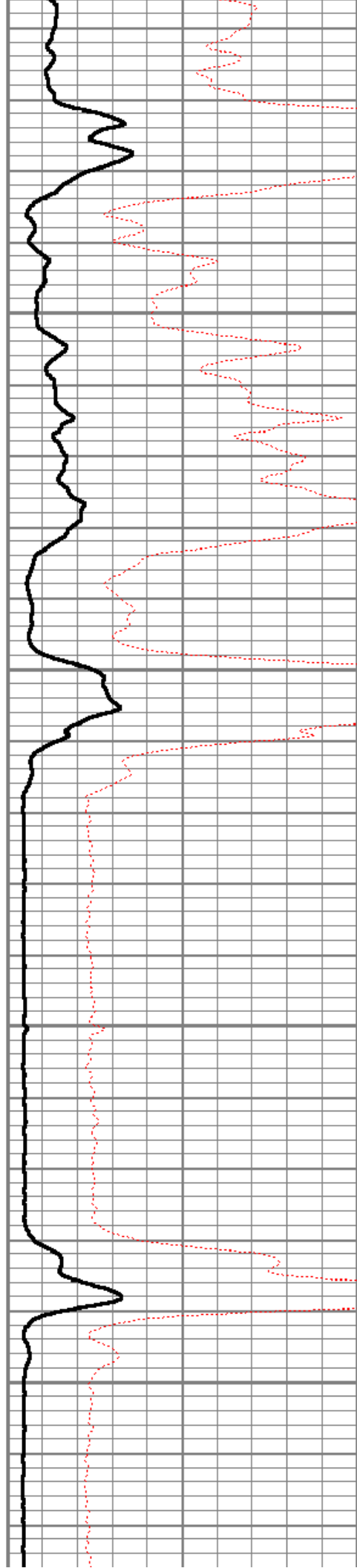


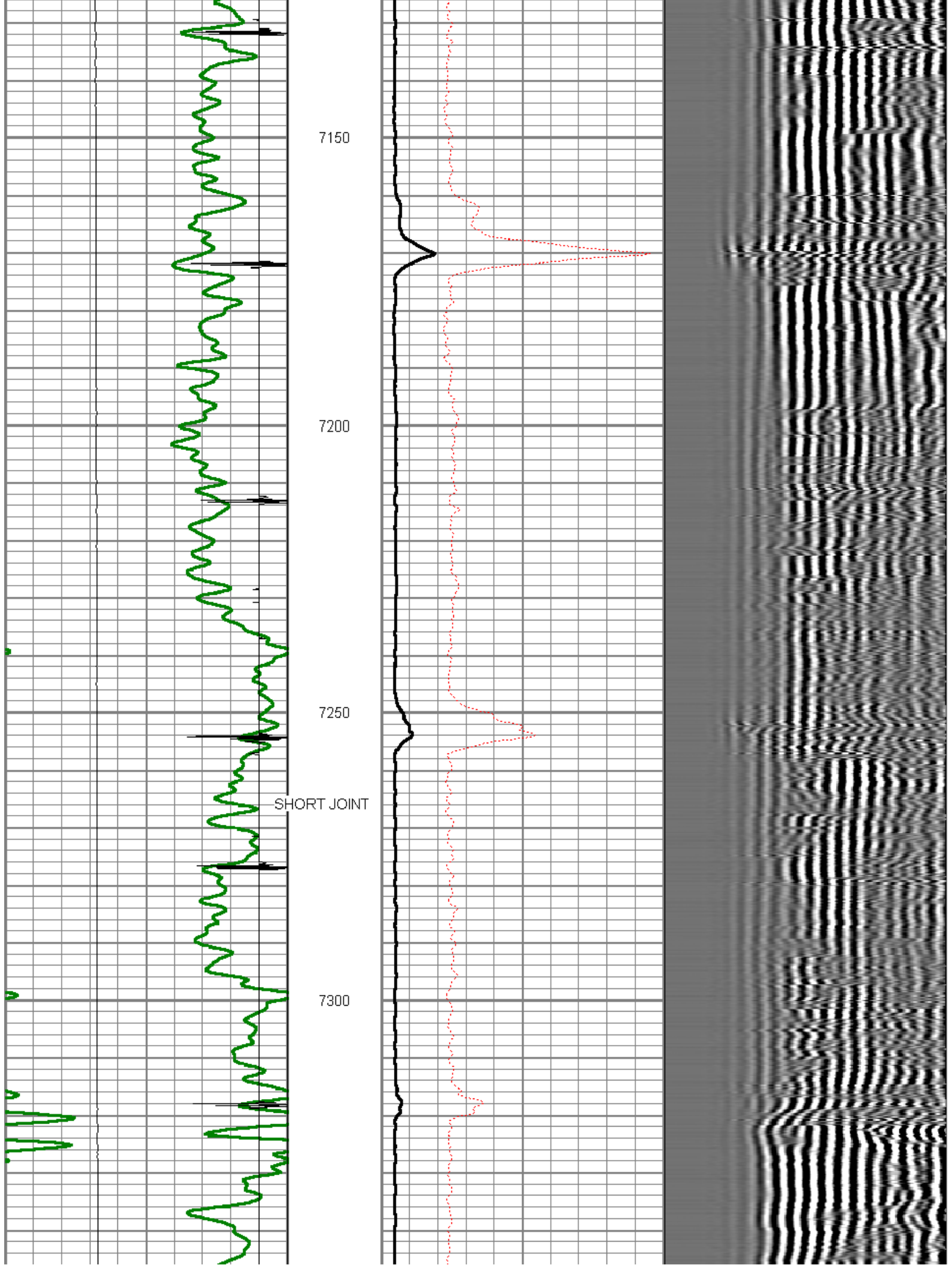
6950

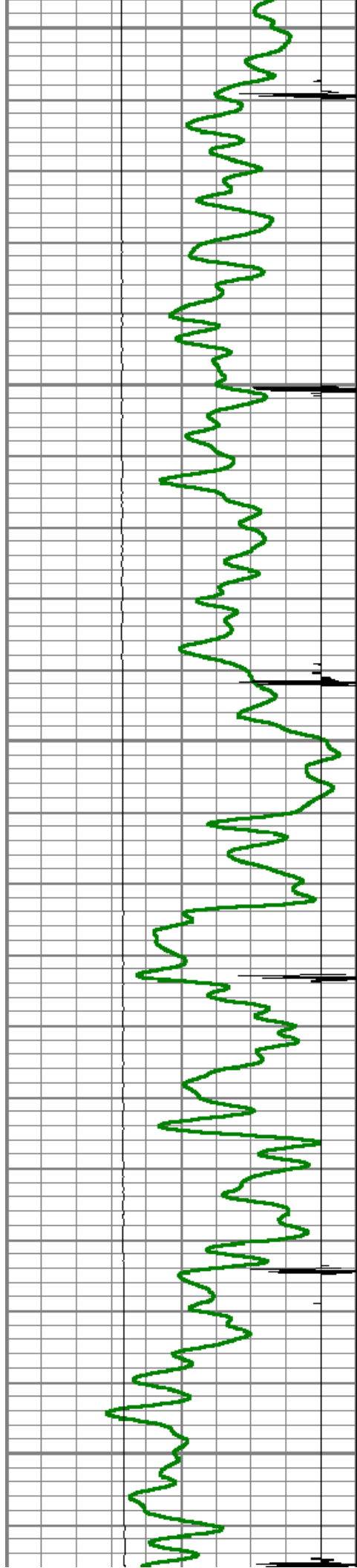
7000

7050

7100







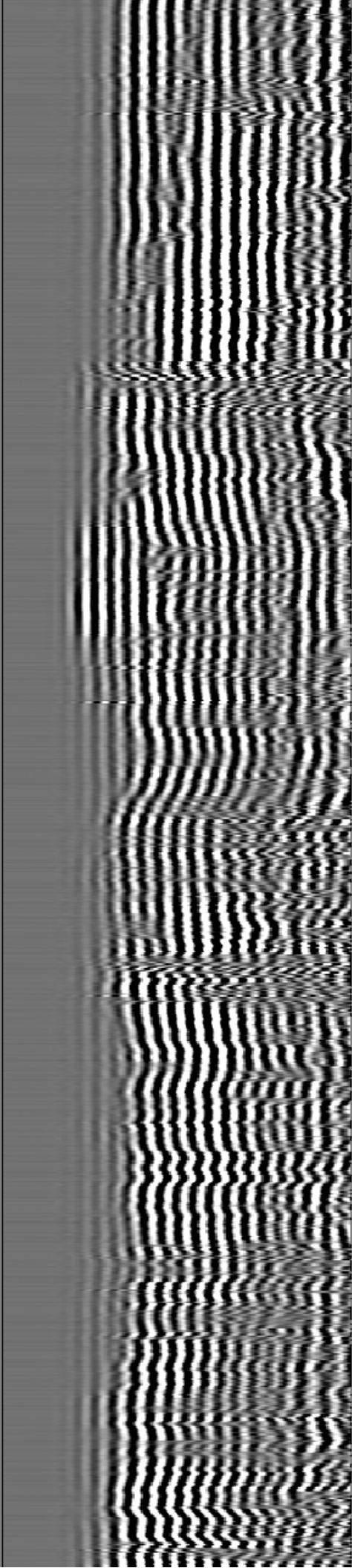
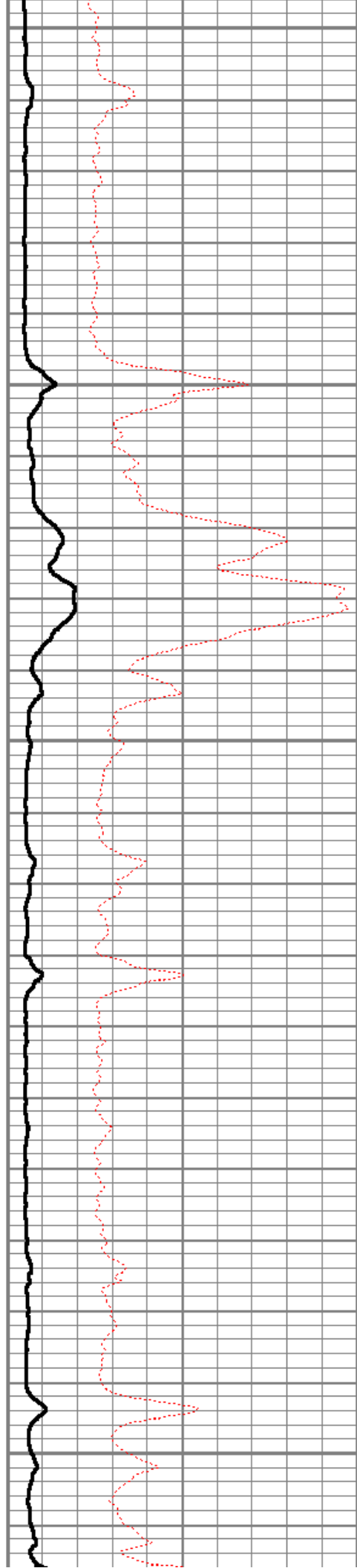
7350

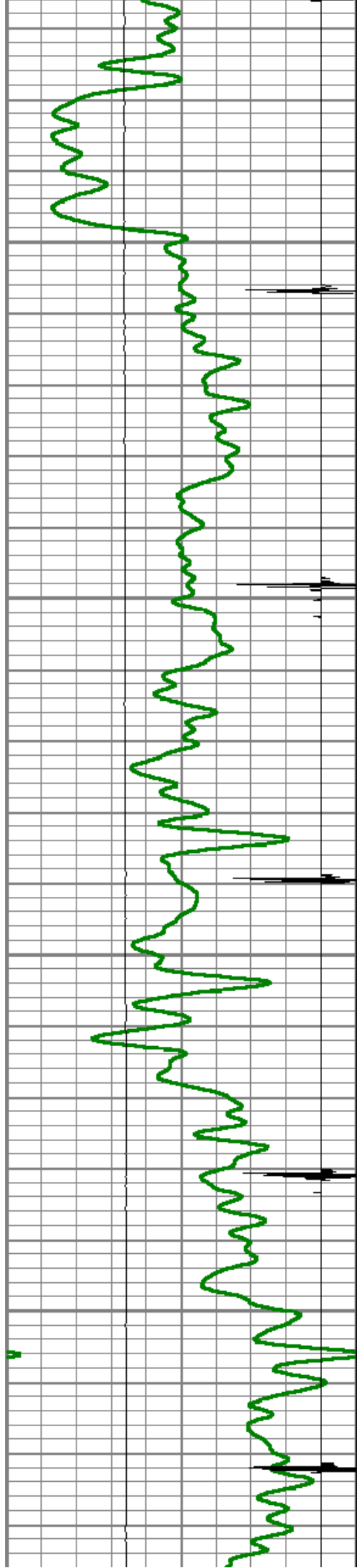
7400

7450

7500

7550



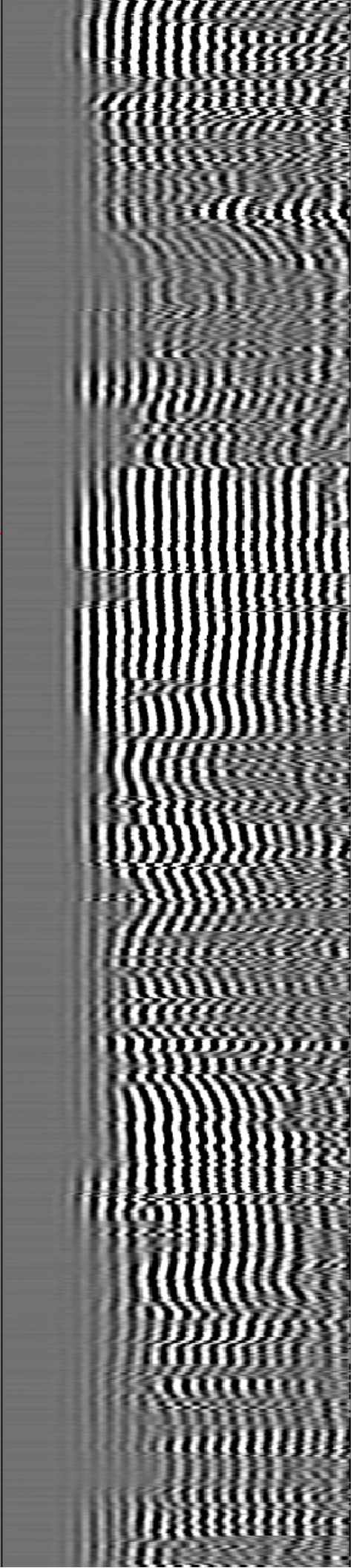
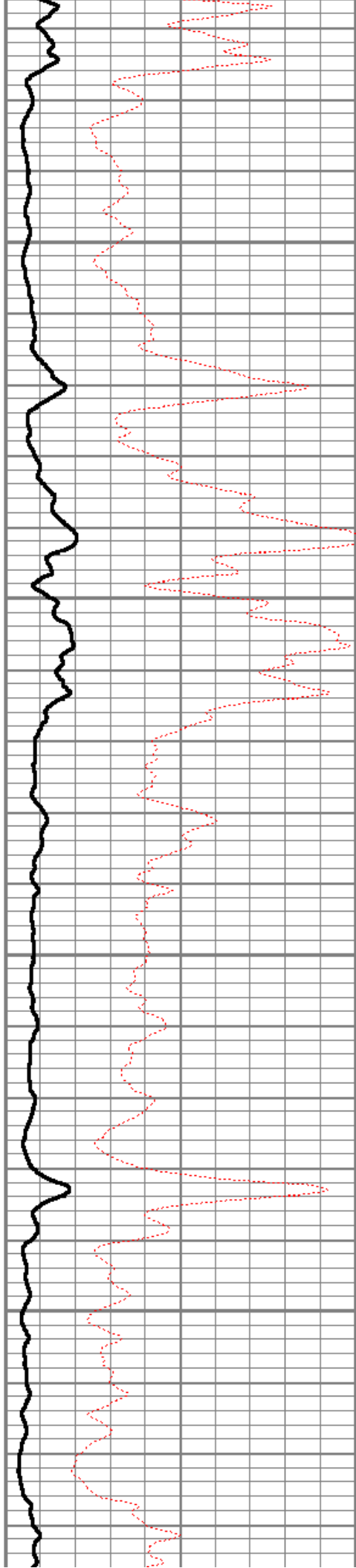


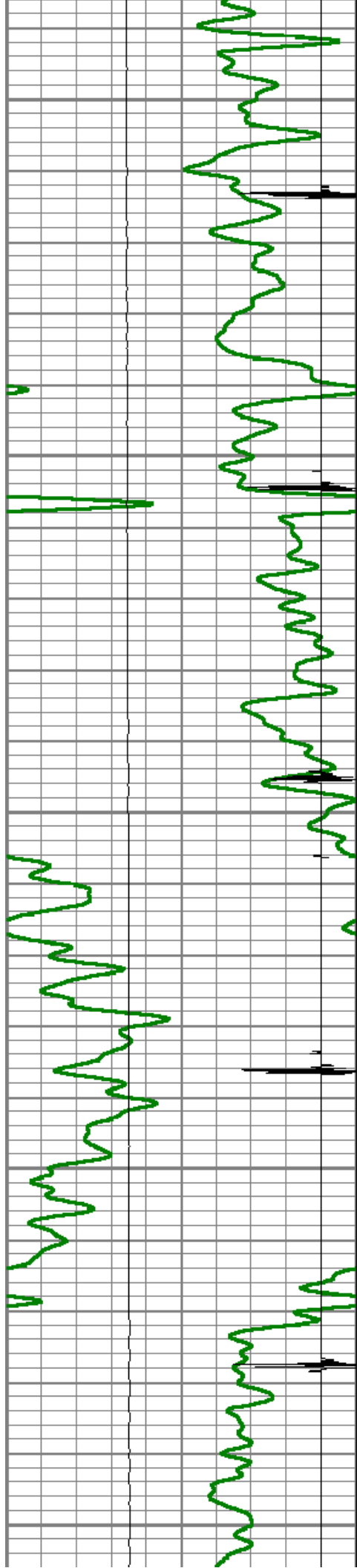
7600

7650

7700

7750





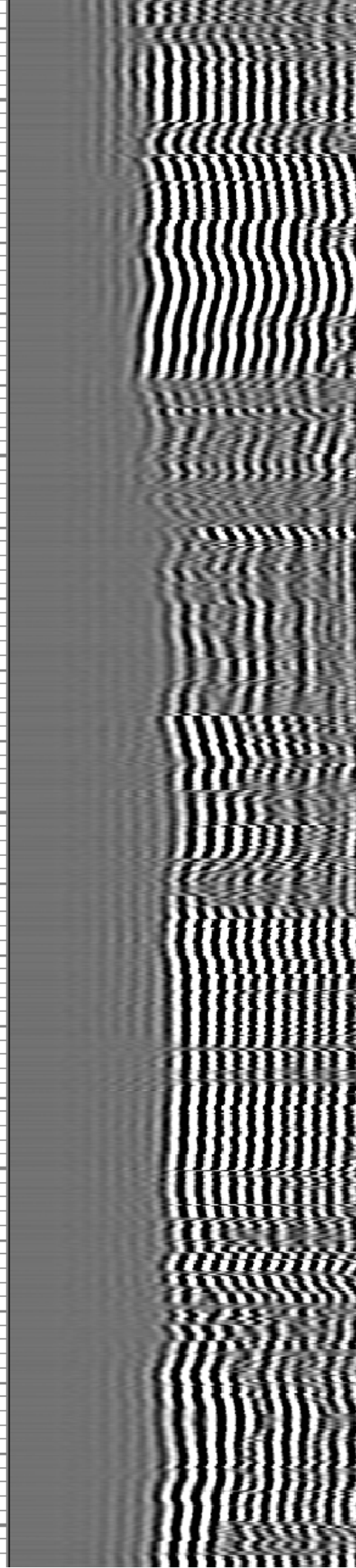
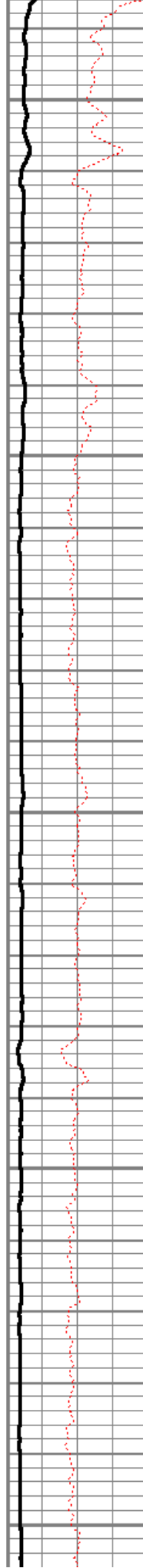
7800

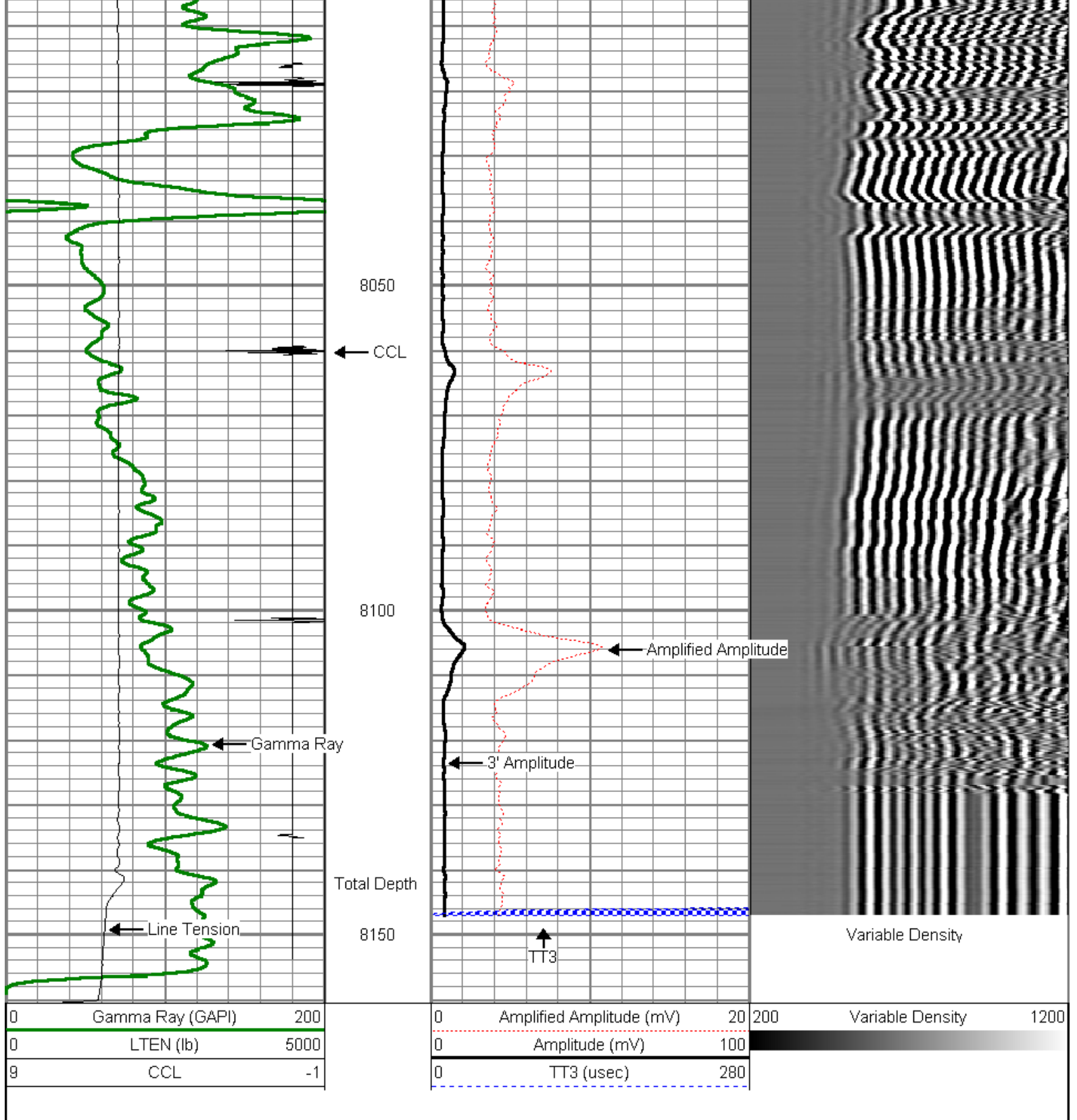
7850

7900

7950

8000





Company
Well
Field
County
State

ENCANA OIL & GAS (USA) INC
ELMQUIST 4-2-23
WATTENBERG
WELD
COLORADO