

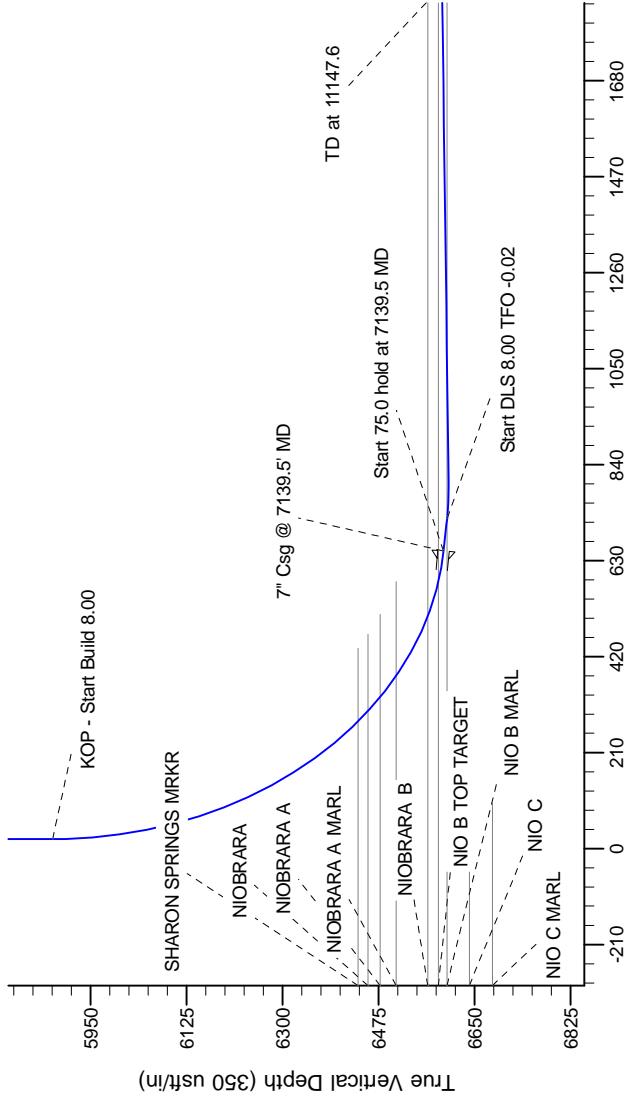
Northern Region Drilling

Project: Wattenberg Field  
Site: AA (Sec.24-T06N-R63W) Weld County, CO  
Well: Wells Ranch AA24-66-1HN  
Wellbore: Original Drilling  
Design: APD Rev 0

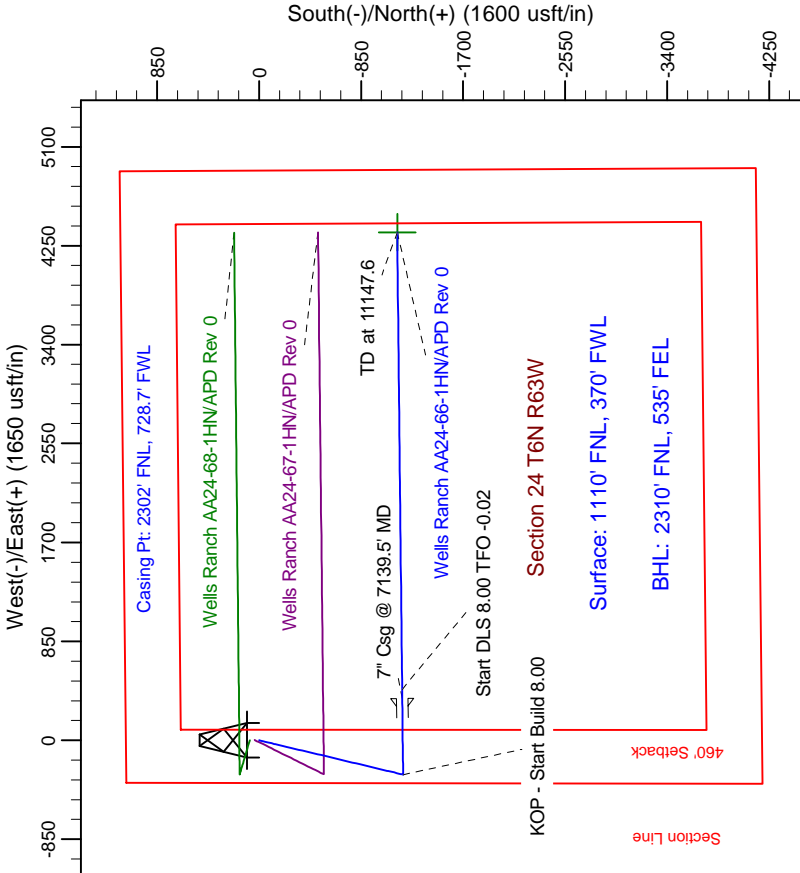
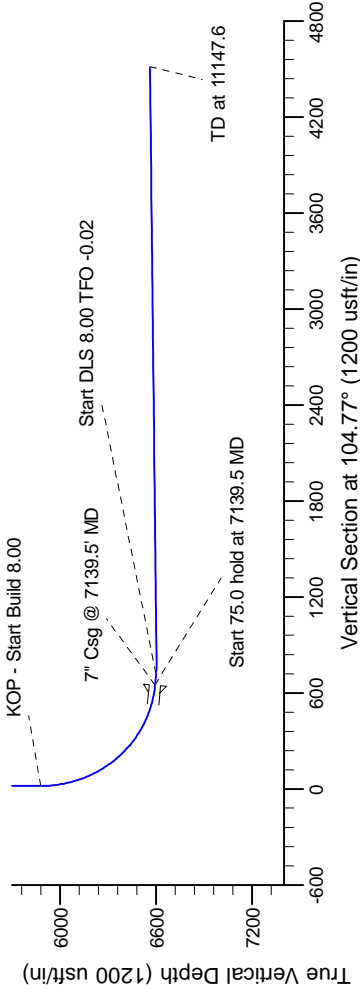
Geodetic System: US State Plane 1983  
Datum: North American Datum 1983  
Ellipsoid: GRS 1980  
Zone: Colorado Northern Zone  
System Datum: Mean Sea Level

SECTION DETAILS

Sec	MD	Inc	Azi	TVD	+N/-S	+E/-W	Dleg	TFace	VSect	Target
1	0.0	0.00	0.00	0.0	0.0	0.0	0.00	0.00	0.0	
2	1200.0	0.00	0.00	1200.0	0.0	0.0	0.00	0.00	0.0	
3	1974.1	19.35	193.81	1959.4	-125.7	-30.9	2.50	193.81	2.2	
4	4921.7	19.35	193.81	4740.6	-1074.3	-264.1	0.00	0.00	18.5	
5	5695.8	0.00	0.00	5500.0	-1200.0	-295.0	2.50	180.00	20.7	
6	6076.0	0.00	0.00	5880.2	-1200.0	-295.0	0.00	0.00	20.7	
7	7138.5	85.00	89.40	6593.7	-1193.2	358.7	8.00	89.40	651.1	
8	7213.5	85.00	89.40	6600.2	-1192.4	433.5	0.00	0.00	723.1	
9	7283.6	90.61	89.40	6602.9	-1191.6	503.4	8.00	-0.02	790.6	
10	11146.6	90.61	89.40	6562.0	-1151.1	4366.1	0.00	0.00	4515.3	



Vertical Section at 104.77° (420 usft/in)



**T G M**

Azimuths to Grid North  
True North: -0.71°  
Magnetic North: 7.82°

Magnetic Field  
Strength: 53164.7snT  
Dip Angle: 67.16°  
Date: 2/7/2012  
Model: IGRF200510

WELL DETAILS: Wells Ranch AA24-66-1HN		
Northing	Ground Level: 4795.0	Longitude
1418256.63	Easting	Latitude
3307936.77	40° 28' 34.464 N	104° 23' 35.052 W
Plan: APD Rev 0 (Wells Ranch AA24-66-1HN/Original Drilling)		
Created By: Carrie Willers	Date: 11:20, February 15 2012	