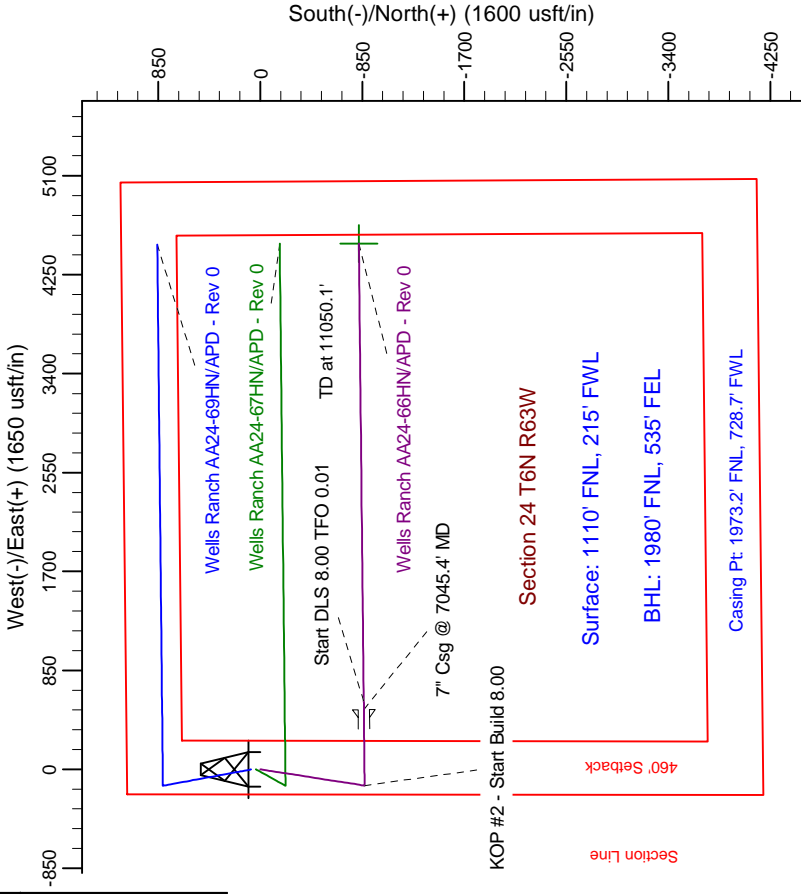
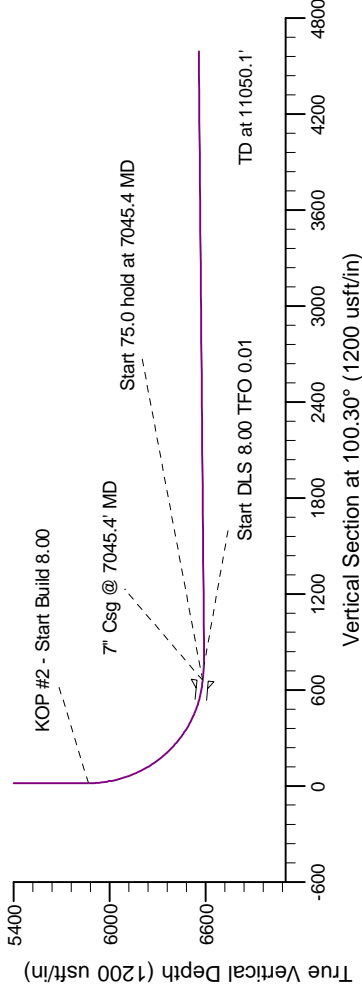
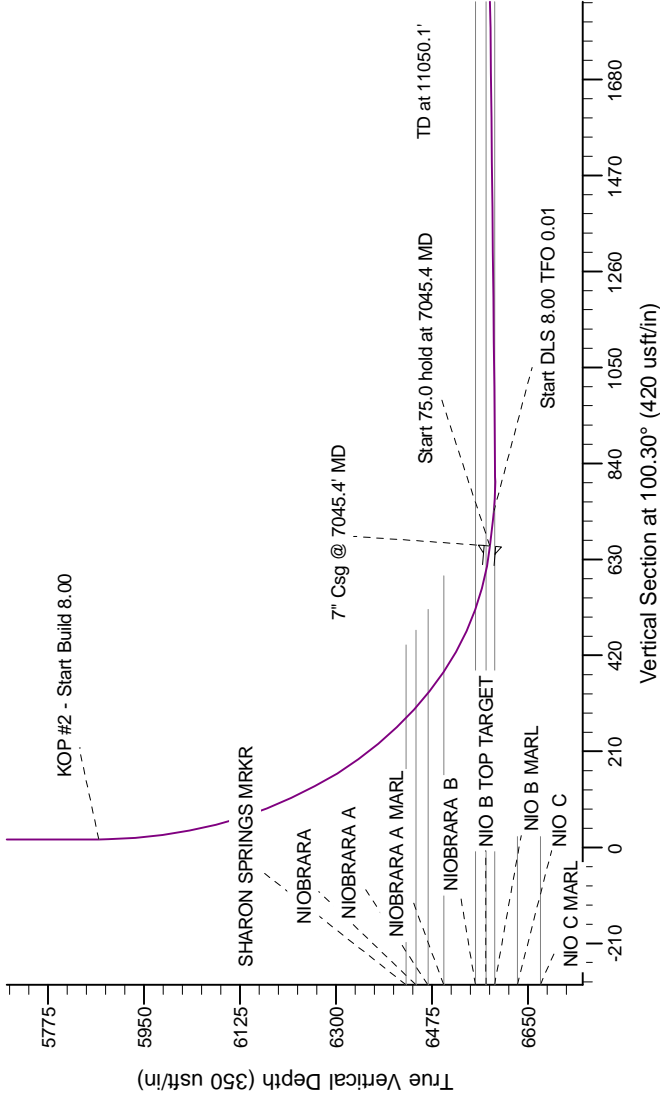


Northern Region Drilling

Project: Wattenberg Field
Site: AA (Sec.24-T06N-R63W) Weld County, CO
Well: Wells Ranch AA24-66HN
Wellbore: Original Drilling
Design: APD - Rev 0

Geodetic System: US State Plane 1983
Datum: North American Datum 1983
Ellipsoid: GRS 1980
Zone: Colorado Northern Zone
System Datum: Mean Sea Level

SECTION DETAILS											
Sec	MD	Inc	Azi	TVD	+N/-S	+E/-W	Dleg	TFace	VSect	Target	
1	0.0	0.00	0.00	0.0	0.0	0.0	0.00	0.00	0.0		
2	1000.0	0.00	0.00	1000.0	0.0	0.0	0.00	0.00	0.0		
3	1638.1	15.95	189.14	1629.9	-87.1	-14.0	2.50	189.14	1.8		
4	4202.1	15.95	189.14	4095.1	-782.9	-126.0	0.00	0.00	16.1		
5	4840.2	0.00	0.00	4725.0	-870.0	-140.0	2.50	180.00	17.9		
6	5982.9	0.00	0.00	5867.7	-870.0	-140.0	0.00	0.00	17.9		
7	7045.4	85.00	89.40	6581.2	-863.2	513.7	8.00	89.40	659.8		
8	7120.4	85.00	89.40	6587.7	-862.4	598.5	0.00	0.00	733.2		
9	7189.0	90.49	89.40	6590.4	-861.7	656.9	8.00	0.01	800.5		
10	11050.1	90.49	89.40	6557.7	-821.3	4517.7	0.00	0.00	4591.8	BHL 1980'FNL, 535'FEL	



T

G

M

Azimuths to Grid North
True North: -0.71°
Magnetic North: 7.82°

Magnetic Field
Strength: 53160.7snT
Dip Angle: 67.16°
Date: 2/21/2012
Model: IGRF200510

WELL DETAILS: Wells Ranch AA24-66HN		
Northing	Ground Level: 4793.0	Longitude
1418254.72	Easting	Latitude
3307783.77	40° 28' 34.464 N	104° 23' 37.032 W
Plan: APD - Rev 0 (Wells Ranch AA24-66HN/Original Drilling)		
Created By: Carrie Willers	Date: 10:37, February 22 2012	