

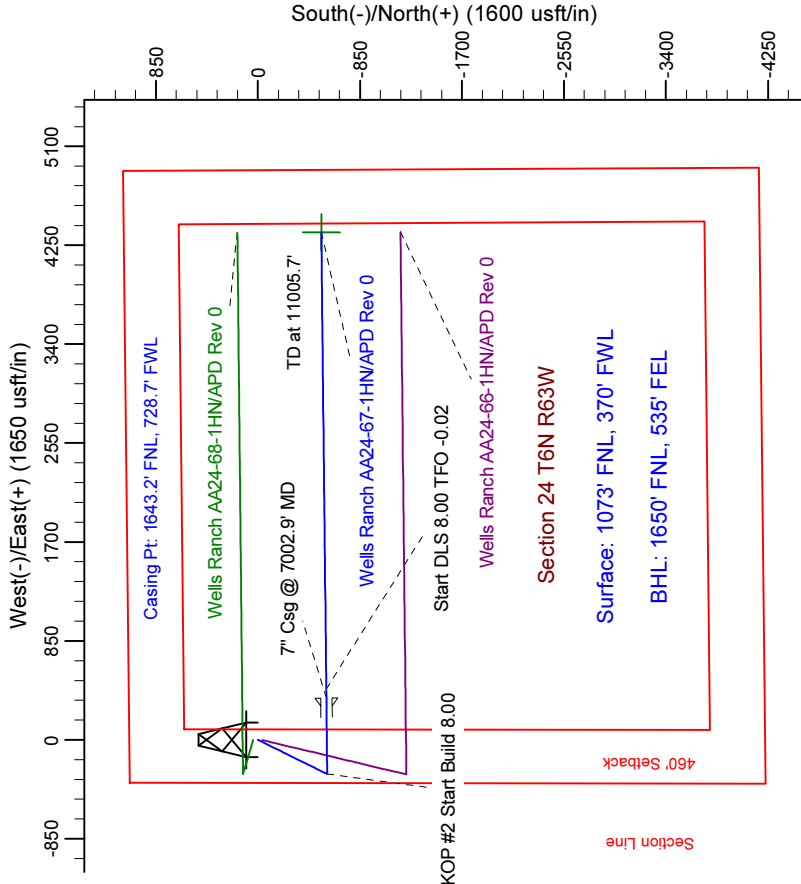
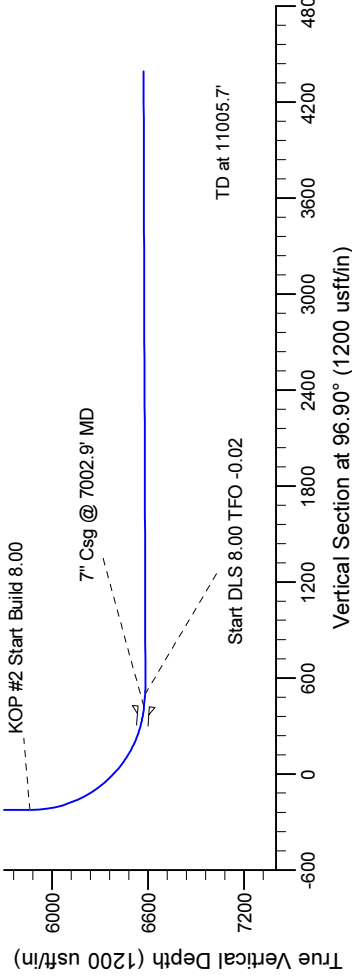
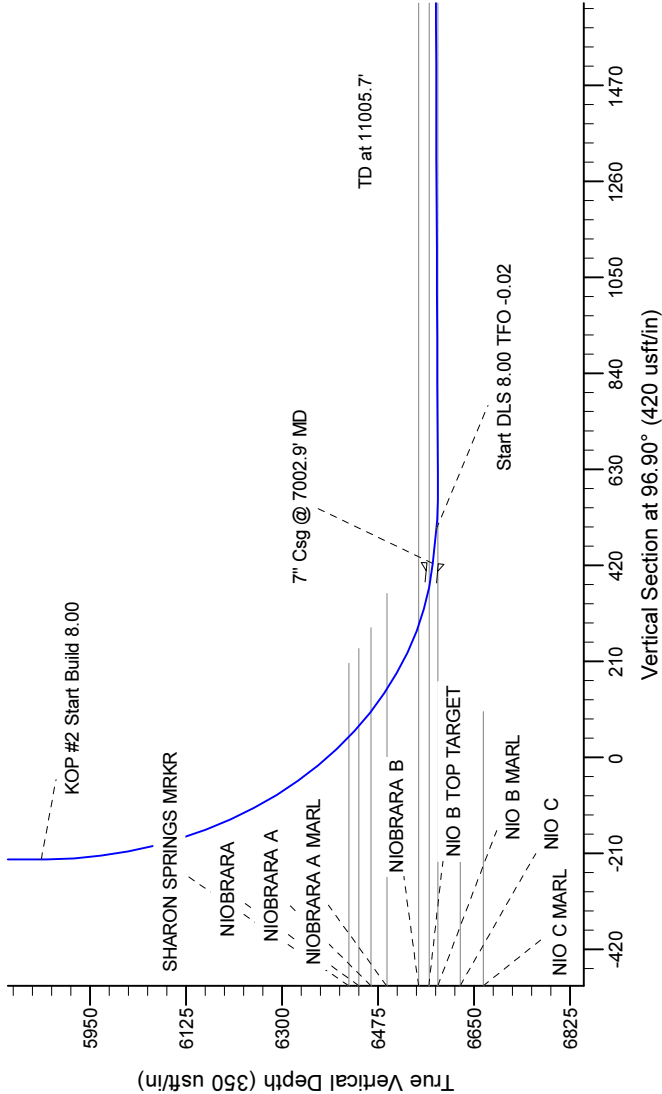
Northern Region Drilling

Project: Wattenberg Field
Site: AA (Sec.24-T06N-R63W) Weld County, CO
Well: Wells Ranch AA24-67-1HN
Wellbore: Original Drilling
Design: APD Rev 0

Geodetic System: US State Plane 1983
Datum: North American Datum 1983
Ellipsoid: GRS 1980
Zone: Colorado Northern Zone
System Datum: Mean Sea Level

SECTION DETAILS

Sec	MD	Inc	Azi	TVD	+N/S	+E/W	Dleg	TFace	VSect	Target
1	0.0	0.00	0.00	0.0	0.0	0.0	0.00	0.00	0.0	
2	1700.0	0.00	0.00	1700.0	0.0	0.0	0.00	0.00	0.0	
3	2307.0	15.17	207.08	2299.9	-71.1	-36.4	2.50	207.08	-27.6	
4	4172.2	15.17	207.08	4100.1	-505.9	-258.6	0.00	0.00	-195.9	
5	4779.2	0.00	0.00	4700.0	-577.0	-295.0	2.50	180.00	-223.5	
6	5940.4	0.00	0.00	5861.2	-577.0	-295.0	0.00	0.00	-223.5	
7	7002.9	85.00	89.40	6574.7	-570.2	-358.7	8.00	89.40	424.7	
8	7077.9	85.00	89.40	6581.2	-569.4	-433.5	0.00	0.00	498.8	
9	7142.7	90.18	89.40	6584.0	-568.7	-498.2	8.00	-0.02	562.9	
10	11005.7	90.18	89.40	6571.5	-528.1	-4361.0	0.00	0.00	4392.8	



T

G

M

Azimuths to Grid North
True North: -0.71°
Magnetic North: 7.82°

Magnetic Field
Strength: 53164.8snT
Dip Angle: 67.16°
Date: 2/7/2012
Model: IGRF200510

WELL DETAILS: Wells Ranch AA24-67-1HN		
North	Ground Level: 4795.0	Longitude
1418293.10	Easting	Latitude
3307939.09	40° 28' 34.824 N	104° 23' 35.016 W
Plan: APD Rev 0 (Wells Ranch AA24-67-1HN/Original Drilling)		
Created By: Carrie Willers	Date: 10:42, February 15 2012	