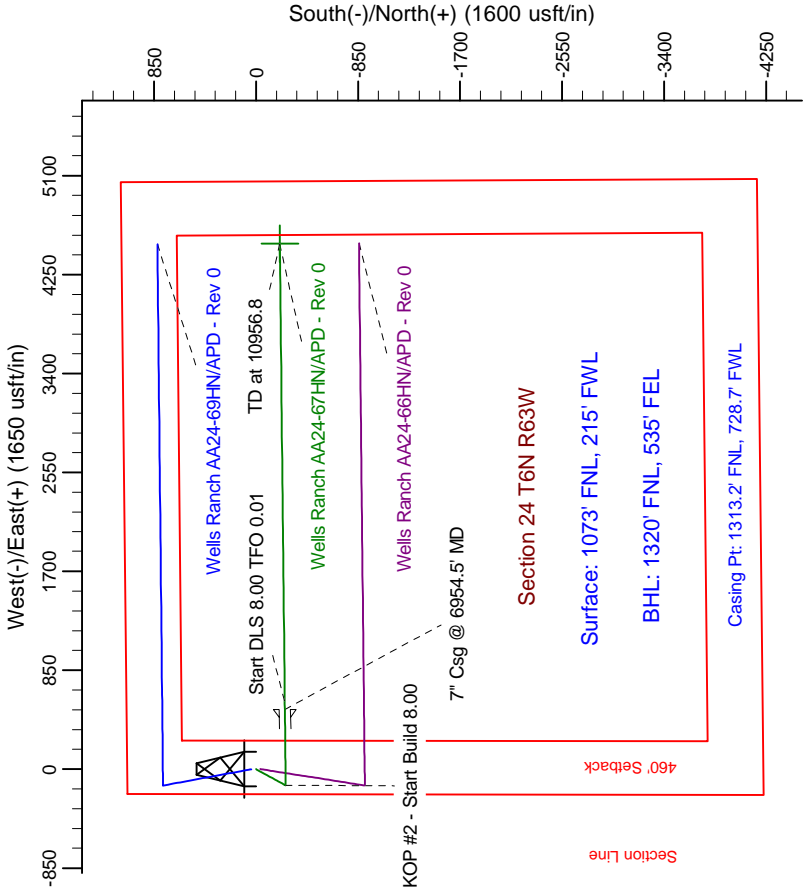
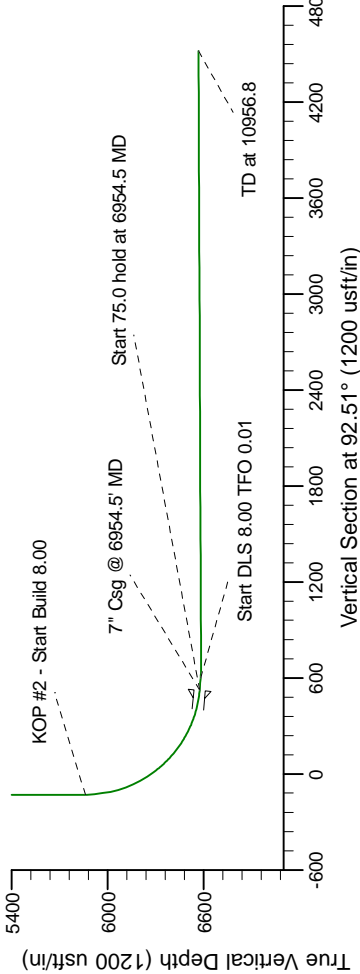
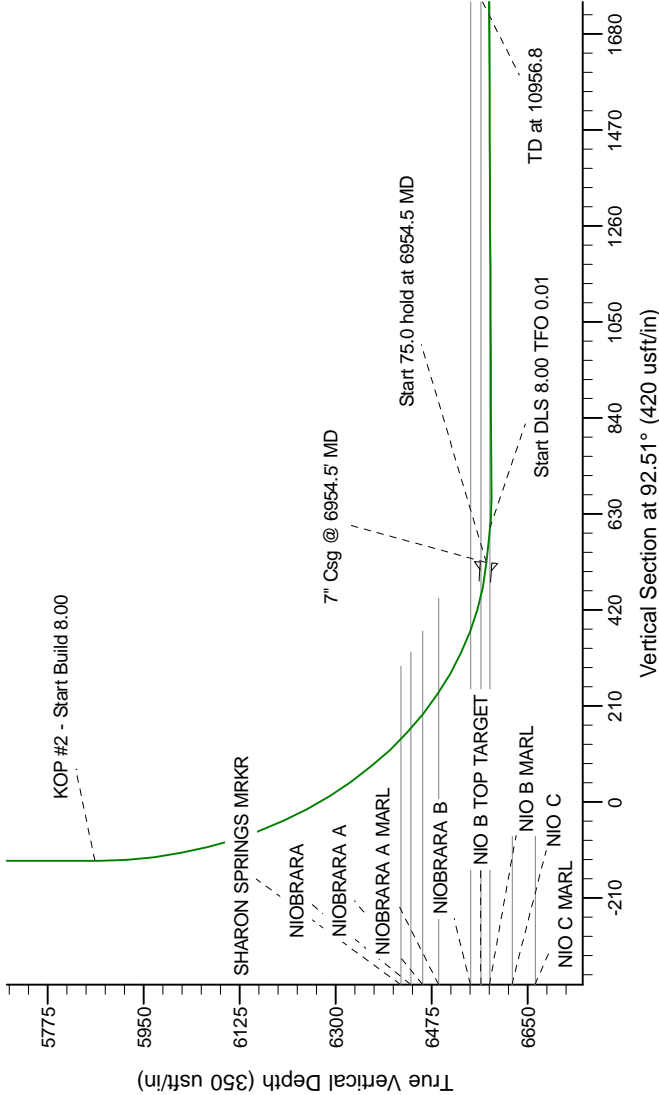


Northern Region Drilling

Project: Wattenberg Field
Site: AA (Sec.24-T06N-R63W) Weld County, CO
Well: Wells Ranch AA24-67HN
Wellbore: Original Drilling
Design: APD - Rev 0

Geodetic System: US State Plane 1983
Datum: North American Datum 1983
Ellipsoid: GRS 1980
Zone: Colorado Northern Zone
System Datum: Mean Sea Level

SECTION DETAILS										
Sec	MD	Inc	Azi	TVD	+N/-S	+E/-W	Dleg	TFace	VSect	Target
1	0.0	0.00	0.00	0.0	0.0	0.0	0.00	0.00	0.0	
2	1800.0	0.00	0.00	1800.0	0.0	0.0	0.00	0.00	0.0	
3	2403.7	15.09	209.54	2396.8	-68.8	-39.0	2.50	209.54	-35.9	
4	2886.9	15.09	209.54	2863.2	-178.2	-101.0	0.00	0.00	-93.1	
5	3490.6	0.00	0.00	3460.0	-247.0	-140.0	2.50	180.00	-129.0	
6	5892.0	0.00	0.00	5861.4	-247.0	-140.0	0.00	0.00	-129.0	
7	6954.5	85.00	89.40	6574.9	-240.2	513.7	8.00	89.40	523.8	
8	7029.5	85.00	89.40	6581.4	-239.4	598.5	0.00	0.00	598.4	
9	7095.0	90.24	89.40	6584.1	-238.7	653.9	8.00	0.01	663.7	
10	10956.8		89.40	6588.0	-198.3	4515.4	0.00	0.00	4519.7	BHL 1320'FNL, 535'FEL



T

G

M

Azimuths to Grid North
True North: -0.71°
Magnetic North: 7.82°

Magnetic Field
Strength: 53160.8snT
Dip Angle: 67.16°
Date: 2/21/2012
Model: IGRF200510

WELL DETAILS: Wells Ranch AA24-67HN		
Northing	Ground Level:	Longitude
1418291.15	4793.0	
Easting	Latitude	104° 23' 37.032 W
3307783.31	40° 28' 34.824 N	
Plan: APD - Rev 0 (Wells Ranch AA24-67HN/Original Drilling)		
Created By: Carrie Willers	Date: 10-28, February 22 2012	