

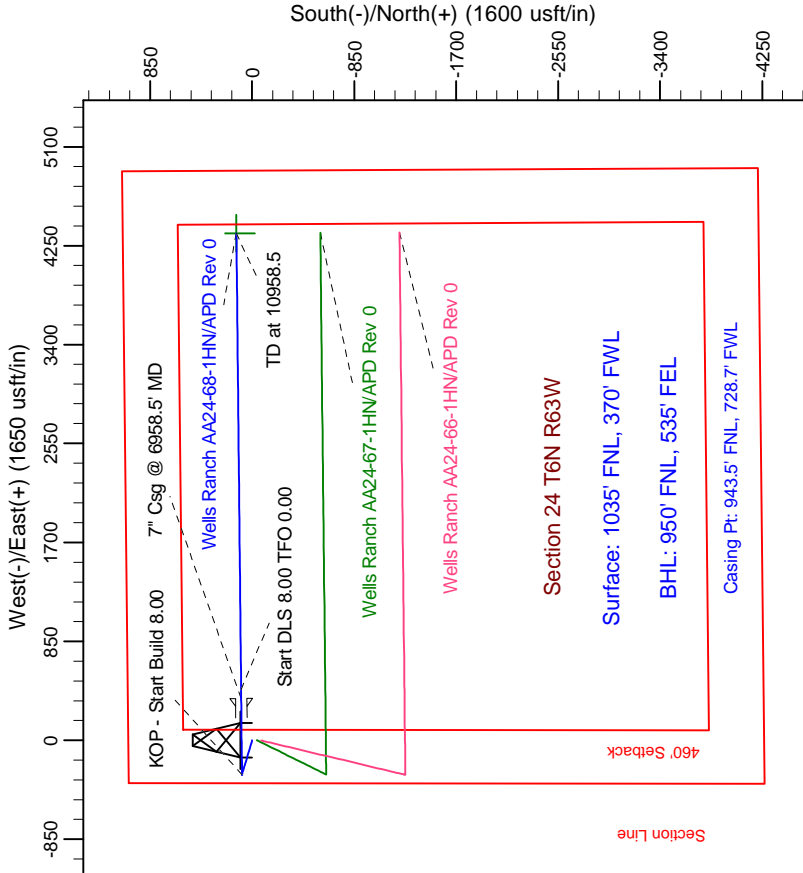
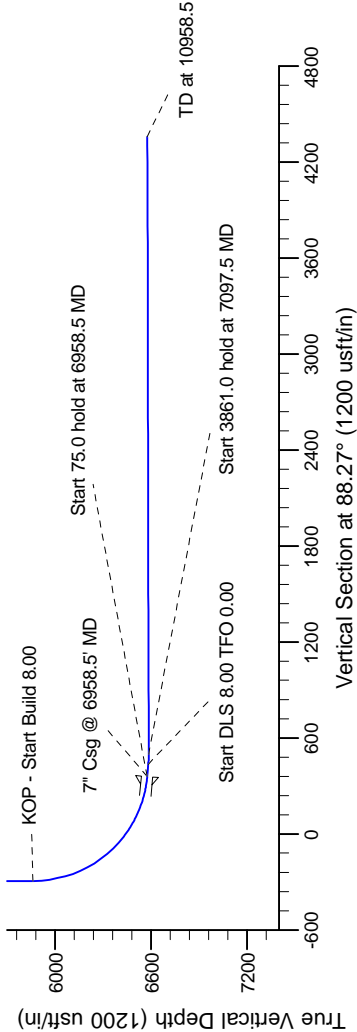
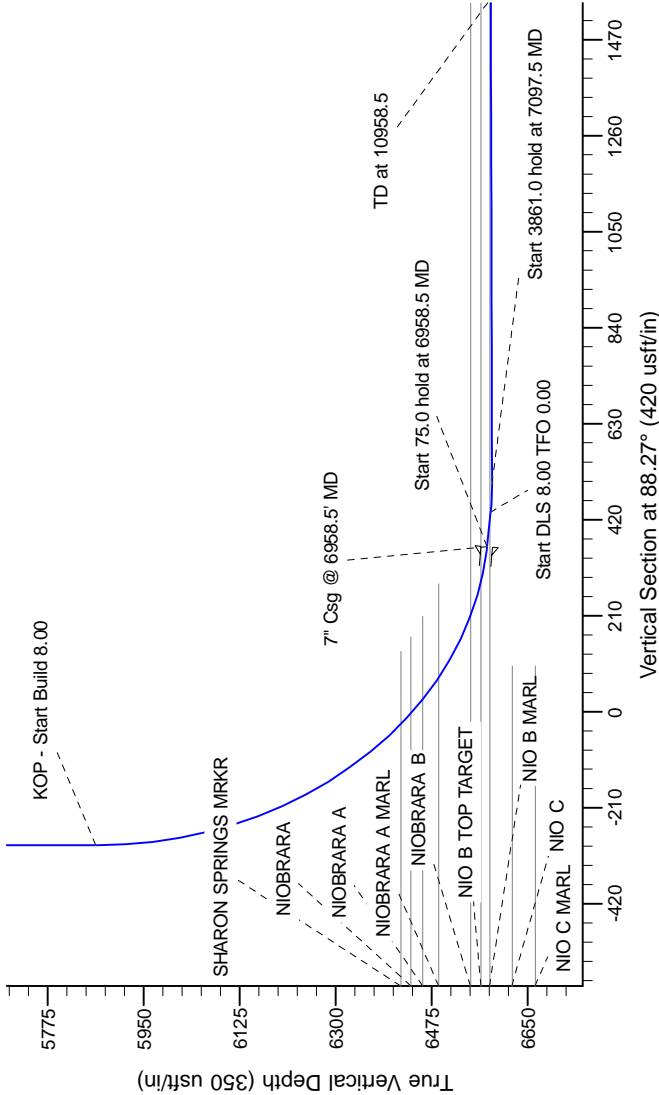
Project: Wattenberg Field
Site: AA (Sec.24-T06N-R63W) Weld County, CO
Well: Wells Ranch AA24-68-1HN
Wellbore: Original Drilling
Design: APD Rev 0

Northern Region Drilling

Geodetic System: US State Plane 1983
Datum: North American Datum 1983
Ellipsoid: GRS 1980
Zone: Colorado Northern Zone
System Datum: Mean Sea Level

SECTION DETAILS

Sec	MD	Inc	Azi	TVD	+N/-S	+E/-W	Dleg	TFace	VSect	Target
1	0.0	0.00	0.00	0.0	0.0	0.0	0.00	0.00	0.0	
2	2200.0	0.00	0.00	2200.0	0.0	0.0	0.00	0.00	0.0	
3	2799.2	14.98	286.07	2792.4	21.6	-74.8	2.50	286.07	-74.2	
4	3384.3	14.98	286.07	3357.6	63.4	-220.2	0.00	0.00	-218.2	
5	3983.5	0.00	0.00	3950.0	85.0	-295.0	2.50	180.00	-292.3	
6	5896.0	0.00	0.00	5862.5	85.0	-295.0	0.00	0.00	-292.3	
7	6958.5	85.00	89.43	6576.0	91.5	358.7	8.00	89.43	361.3	
8	7033.5	85.00	89.43	6582.5	92.2	433.5	0.00	0.00	436.0	
9	7097.5	90.12	89.43	6586.2	92.9	497.4	8.00	0.00	500.0	
10	10958.5	90.12	89.43	6577.0	131.3	4358.2	0.00	0.00	4360.2	



T

G

M

Azimuths to Grid North
True North: -0.71°
Magnetic North: 7.82°

Magnetic Field
Strength: 53164.9snT
Dip Angle: 67.16°
Date: 2/7/2012
Model: IGRF200510

WELL DETAILS: Wells Ranch AA24-68-1HN		
Northing	Ground Level: 4796.0	Longitude
1418333.17	Easting 3307938.59	Latitude 40° 28' 35.016 W
Plan: APD Rev 0 (Wells Ranch AA24-68-1HN/Original Drilling)		
Created By: Carrie Willers	Date: 11:45, February 15 2012	