

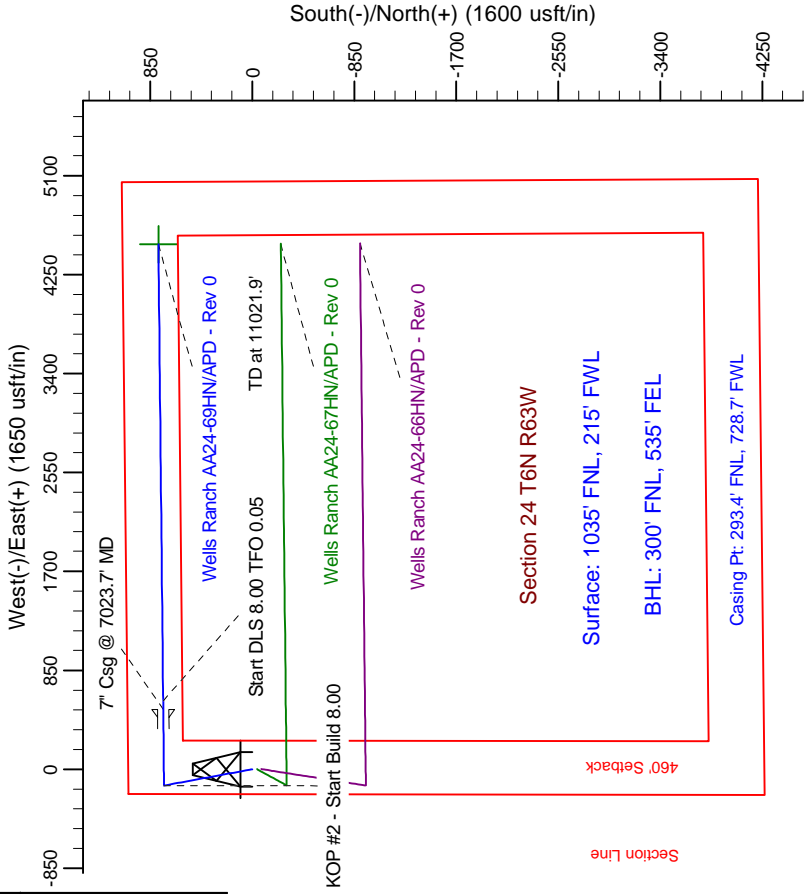
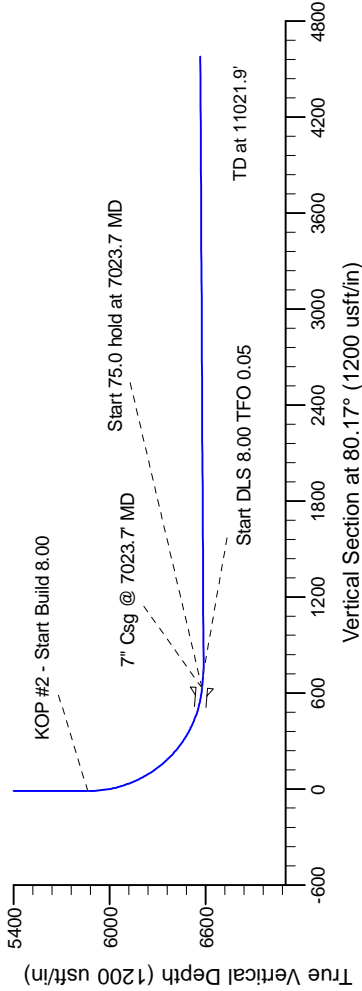
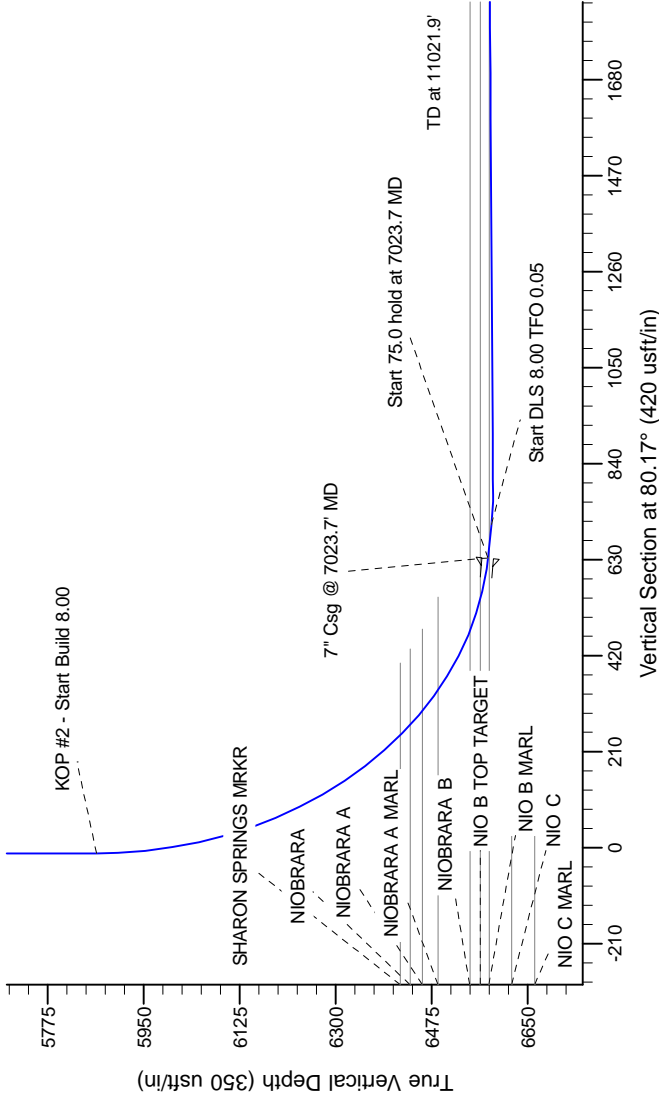
Northern Region Drilling

Project: Wattenberg Field
Site: AA (Sec.24-T06N-R63W) Weld County, CO
Well: Wells Ranch AA24-69HN
Wellbore: Original Drilling
Design: APD - Rev 0

Geodetic System: US State Plane 1983
Datum: North American Datum 1983
Ellipsoid: GRS 1980
Zone: Colorado Northern Zone
System Datum: Mean Sea Level

SECTION DETAILS

Sec	MD	Inc	Azi	TVD	+N/-S	+E/-W	Dleg	TFace	VSect	Target
1	0.0	0.00	0.00	0.0	0.0	0.0	0.00	0.00	0.0	
2	1500.0	0.00	0.00	1500.0	0.0	0.0	0.00	0.00	0.0	
3	2141.1	16.03	349.22	2132.8	87.5	-16.7	2.50	349.22	-1.5	
4	4205.8	16.03	349.22	4117.2	647.5	-123.3	0.00	0.00	-11.0	
5	4846.9	0.00	0.00	4750.0	735.0	-140.0	2.50	180.00	-12.4	
6	5961.2	0.00	0.00	5864.3	735.0	-140.0	0.00	0.00	-12.4	
7	7023.7	85.00	89.42	6577.8	741.6	513.7	8.00	89.42	632.8	
8	7098.7	85.00	89.42	6584.3	742.4	588.5	0.00	0.00	706.6	
9	7164.9	90.30	88.42	6587.0	743.0	654.6	8.00	0.05	771.8	
10	11021.9	90.30	89.42	6567.0	781.8	4511.3	0.00	0.00	4578.5	BHL 300'FNL, 535'FEL



T G M

Azimuths to Grid North
True North: -0.71°
Magnetic North: 7.82°

Magnetic Field
Strength: 53160.9snT
Dip Angle: 67.16°
Date: 2/21/2012
Model: IGRF200510

WELL DETAILS: Wells Ranch AA24-69HN			
North	Ground Level:	Latitude	Longitude
1418331.22	4792.0	40.476450	-104.393620
Plan: APD - Rev 0 (Wells Ranch AA24-69HN/Original Drilling)			
Created By: Carrie Willers		Date: 8:43, February 22 2012	