

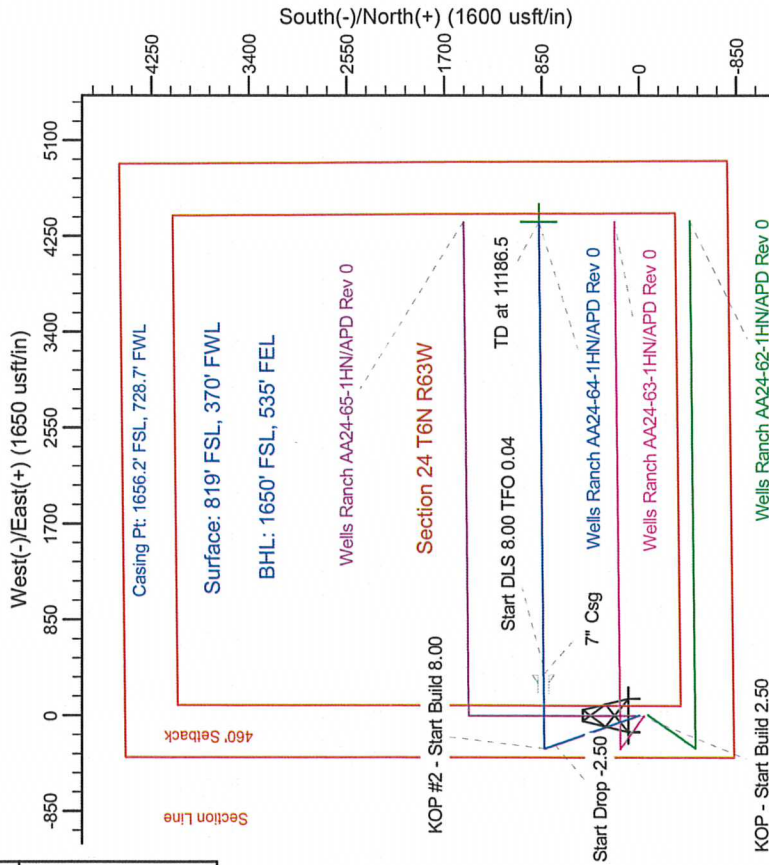
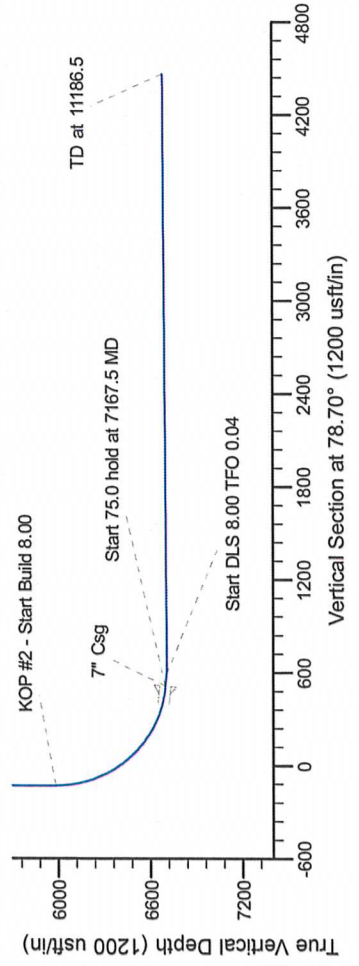
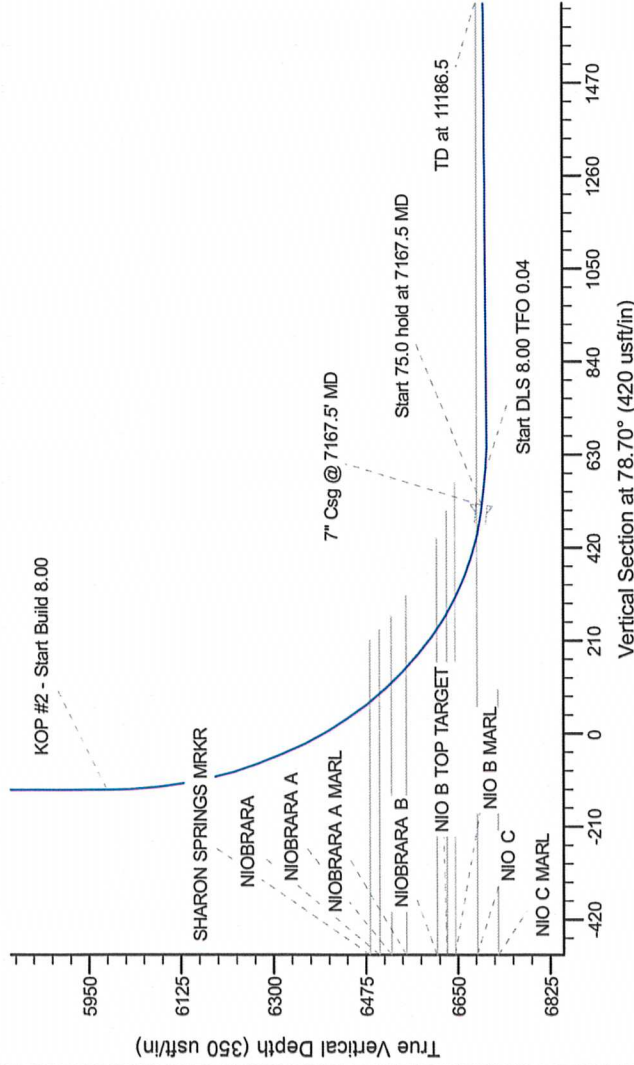
Project: Wattenberg Field
Site: AA (Sec24-T06N-63W) Weld County, CO
Well: Wells Ranch AA24-64-1HN
Wellbore: Original Drilling
Design: APD Rev 0

Northern Region Drilling

Geodetic System: US State Plane 1983
Datum: North American Datum 1983
Ellipsoid: GRS 1980
Zone: Colorado Northern Zone
System Datum: Mean Sea Level

SECTION DETAILS

Sec	MD	Inc	Azi	TVD	+N/-S	+E/-W	Dleg	TFace	VSecl	Target
1	0.0	0.00	0.00	0.0	0.0	0.0	0.00	0.00	0.0	
2	1500.0	0.00	0.00	1500.0	0.0	0.0	0.00	0.00	0.0	
3	2178.4	16.96	340.46	2168.5	93.9	-33.3	2.50	340.46	-14.3	
4	4518.1	16.96	340.46	4406.5	737.1	-261.7	0.00	0.00	-112.1	
5	5196.5	0.00	0.00	5075.0	831.0	-295.0	2.50	180.00	-126.4	
6	6105.0	0.00	0.00	5983.5	831.0	-295.0	0.00	0.00	-126.4	
7	7167.5	85.00	89.46	6897.0	837.2	358.7	8.00	89.46	515.9	
8	7242.5	85.00	89.46	6703.5	837.9	433.5	0.00	0.00	589.3	
9	7308.7	90.30	89.46	6706.3	838.5	499.6	8.00	0.04	694.3	
10	11186.5	90.30	89.46	6886.0	874.8	4377.2	0.00	0.00	4463.8	



T G M

Azimuths to Grid North
True North: -0.71°
Magnetic North: 7.82°

Magnetic Field
Strength: 53159.9snT
Dip Angle: 67.15°
Date: 2/6/2012
Model: IGRF200510

WELL DETAILS: Wells Ranch AA24-64-1HN		
Northing	Easting	Ground Level: 4827.0
1414886.53	3307934.32	Latitude 40° 28' 1.164 N
		Longitude 104° 23' 35.628 W
Plan: APD Rev 0 (Wells Ranch AA24-64-1HN/Original Drilling)		
Created By: Carrie Willers	Date: 16:43, February 13 2012	