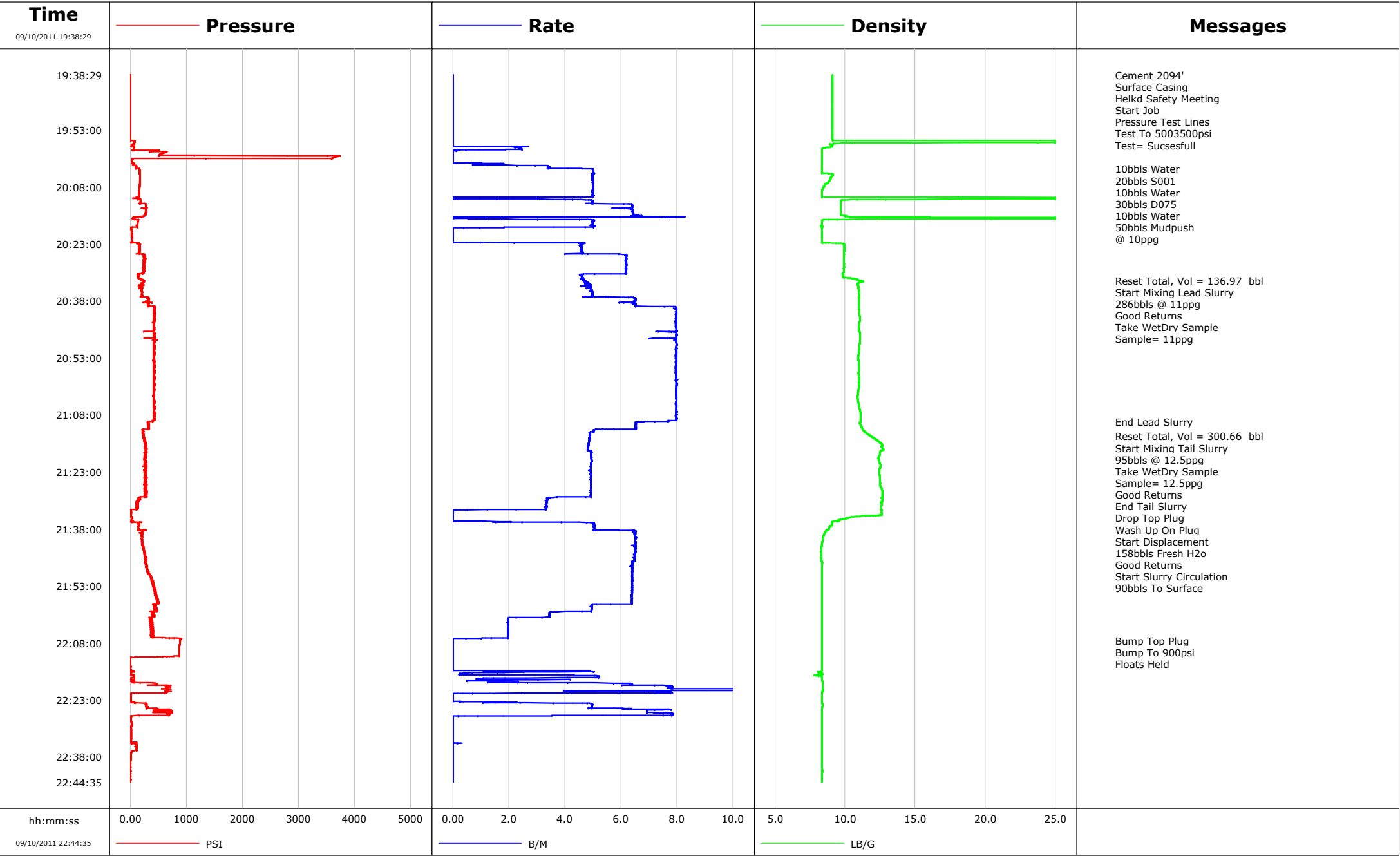


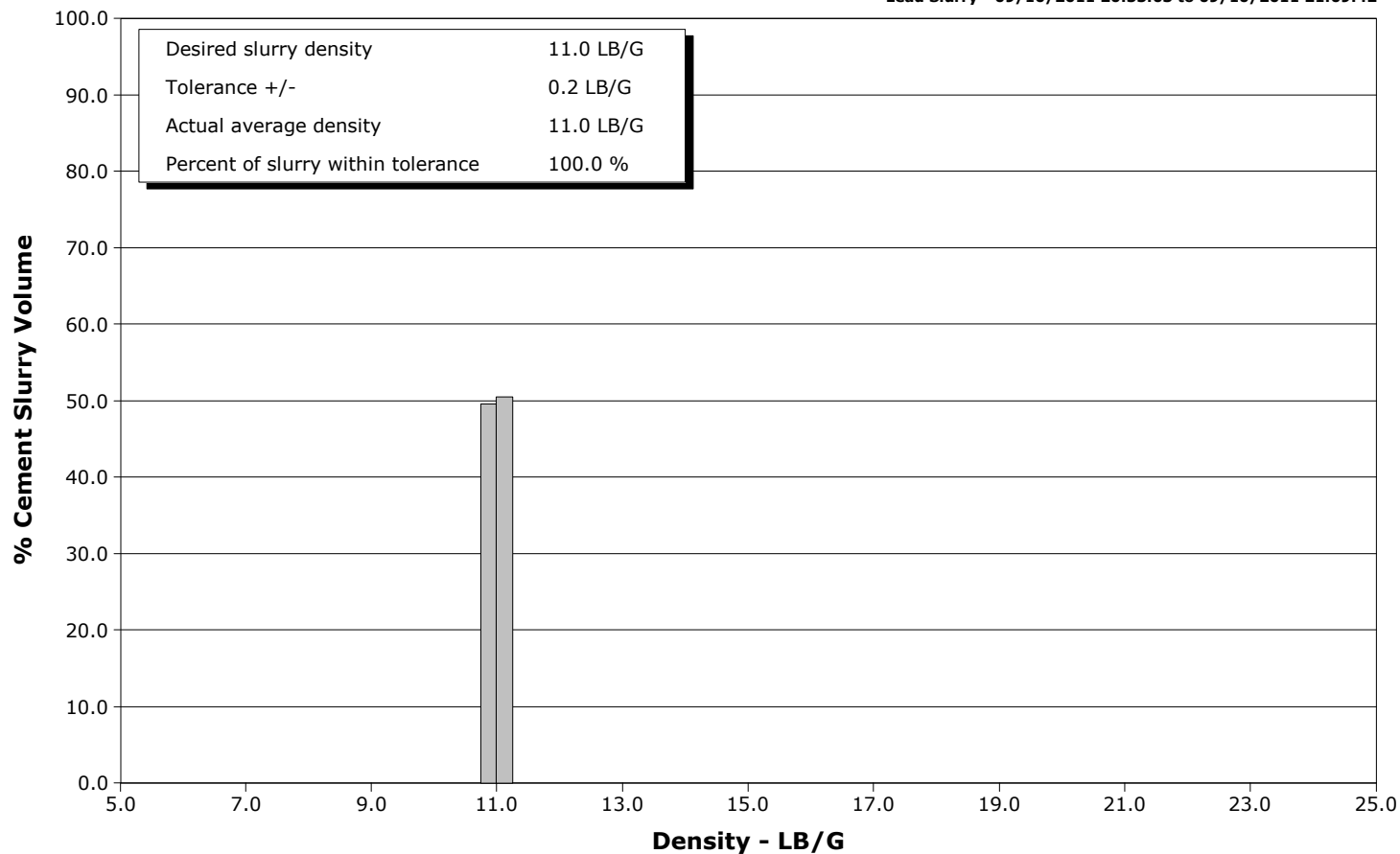
<b>Well</b>	SGU 8503D-22	<b>Client</b>	ENCANA
<b>Field</b>	N PARACHUTE	<b>SIR No.</b>	BQMF-00135
<b>Engineer</b>	JASON CRICK	<b>Job Type</b>	SURFACE
<b>Country</b>	United States	<b>Job Date</b>	09-10-2011



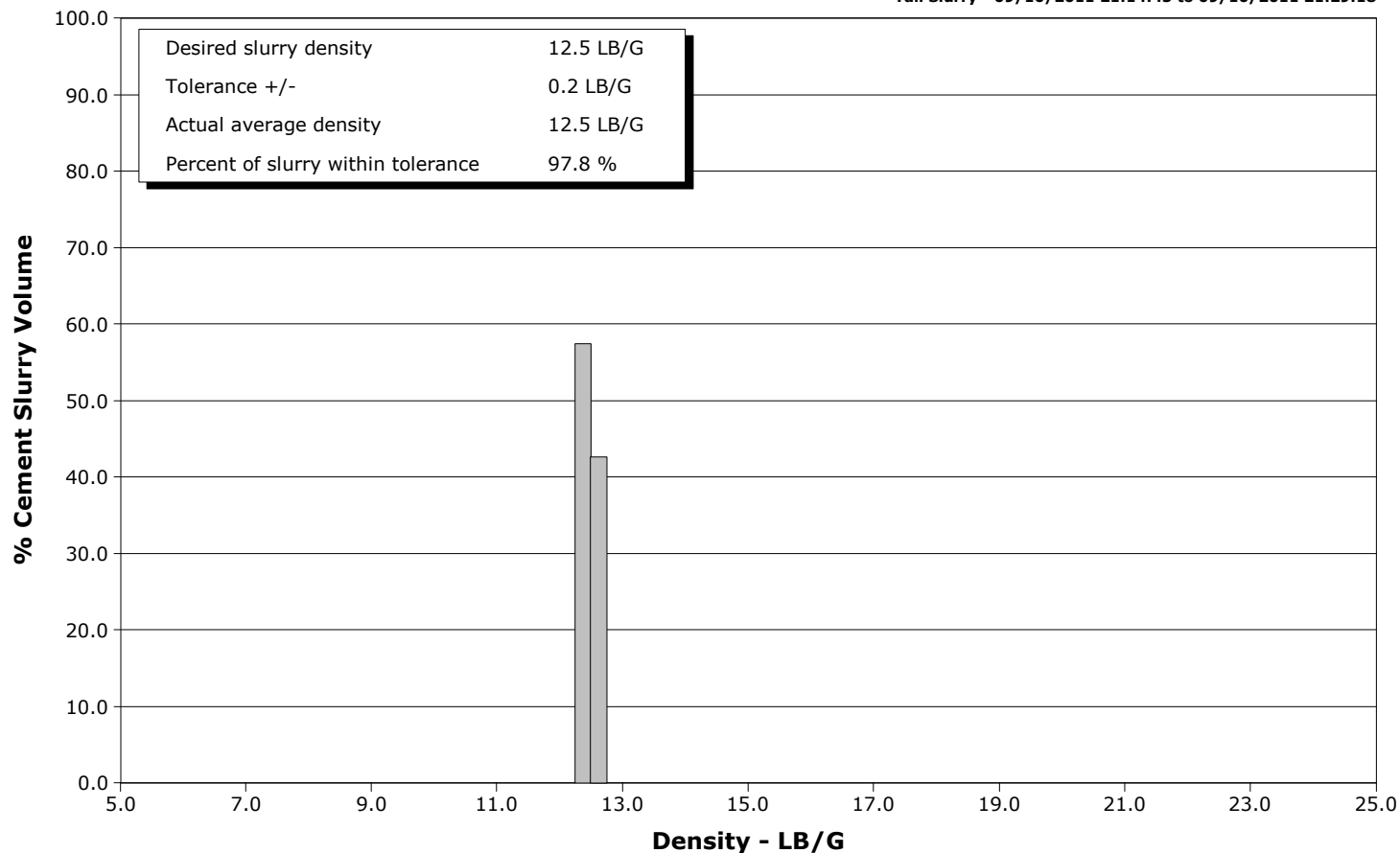
**Well** SGU 8503D-22  
**Field** N PARACHUTE  
**Engineer** JASON CRICK  
**Country** United States

**Client** ENCANA  
**SIR No.** BQMF-00135  
**Job Type** SURFACE  
**Job Date** 09-10-2011

**Lead Slurry - 09/10/2011 20:33:03 to 09/10/2011 21:09:42**



**Tail Slurry - 09/10/2011 21:14:45 to 09/10/2011 21:29:18**



				Customer ENCANA				Job Number BQMF-00135										
Well SGU 8503D-22				Location (legal) N PARACHUTE				Schlumberger Location				Job Start Sep/10/2011						
Field N PARACHUTE			Formation Name/Type			Deviation deg		Bit Size in		Well MD ft		Well TVD ft						
County GARFIELD			State/Province CO			BHP psi		BHST degF		BHCT degF		Pore Press. Gradient lb/gal						
Well Master			API/UWI															
Rig Name		Drilled For Gas		Service Via Land		Casing/Liner												
						Depth, ft		Size, in		Weight, lb/ft		Grade		Thread				
Offshore Zone		Well Class		Well Type														
Drilling Fluid Type			Max. Density lb/gal		Plastic Viscosity cP		Tubing/Drill Pipe											
							T/D		Depth, ft		Size, in		Weight, lb/ft		Grade		Thread	
Service Line Cementing		Job Type SURFACE																
Max. Allowed Tub. Press psi		Max. Allowed Ann. Press psi		WH Connection		Perforations/Open Hole												
						Top, ft		Bottom, ft		shot/ft		No. of Shots		Total Interval ft				
						ft		ft										
						ft		ft						Diameter in				
						ft		ft										
Service Instructions 560SKS 11 LITEFILE 295SKS 12.5 LITEFILL						Treat Down Casing		Displacement 158.0 bbl		Packer Type		Packer Depth ft						
						Tubing Vol. bbl		Casing Vol. 161.0 bbl		Annular Vol. 254.0 bbl		Openhole Vol. 416.0 bbl						
Casing/Tubing Secured <input checked="" type="checkbox"/>		1 Hole Vol. Circulated prior to Cement <input checked="" type="checkbox"/>		Casing Tools				Squeeze Job										
Lift Pressure 1036 psi				Shoe Type Guide				Squeeze Type										
Pipe Rotated <input type="checkbox"/>		Pipe Reciprocated <input type="checkbox"/>		Shoe Depth 2094.0 ft				Tool Type										
No. Centralizers		Top Plugs		Bottom Plugs		Stage Tool Type				Tool Depth ft								
Cement Head Type				Stage Tool Depth ft				Tail Pipe Size in										
Job Scheduled For Sep/10/2011		Arrived on Location Sep/10/2011		Leave Location Sep/10/2011		Collar Type Diff-Fill				Tail Pipe Depth ft								
						Collar Depth 2047.0 ft				Sqz. Total Vol. bbl								
Date	Time 24-hr clock	Treating Pressure PSI	Flow Rate B/M	Density LB/G	Volume BBL	Message												
09/10/2011	19:38:29	1	0.0	9.12	0.0	Started Acquisition												
09/10/2011	19:38:34	1	0.0	9.12	0.0	Cement 2094'												
09/10/2011	19:38:36	1	0.0	9.12	0.0	Start Job												
09/10/2011	19:38:39	1	0.0	9.12	0.0	Pressure Test Lines												
09/10/2011	19:38:40	1	0.0	9.12	0.0	Test To 5003500psi												
09/10/2011	19:38:59	1	0.0	9.12	0.0													
09/10/2011	19:39:29	1	0.0	9.12	0.0													
09/10/2011	19:39:59	1	0.0	9.12	0.0													
09/10/2011	19:40:29	1	0.0	9.12	0.0													
09/10/2011	19:40:59	1	0.0	9.12	0.0													
09/10/2011	19:41:29	0	0.0	9.12	0.0													
09/10/2011	19:41:59	1	0.0	9.12	0.0													
09/10/2011	19:42:29	1	0.0	9.11	0.0													
09/10/2011	19:42:59	1	0.0	9.11	0.0													
09/10/2011	19:43:29	1	0.0	9.11	0.0													
09/10/2011	19:43:59	1	0.0	9.11	0.0													
09/10/2011	19:44:29	0	0.0	9.11	0.0													
09/10/2011	19:44:59	1	0.0	9.11	0.0													
09/10/2011	19:45:29	1	0.0	9.11	0.0													
09/10/2011	19:45:59	0	0.0	9.11	0.0													
09/10/2011	19:46:29	0	0.0	9.11	0.0													

Well			Field		Job Start	Customer		Job Number
SGU 8503D-22			N PARACHUTE		Sep/10/2011	ENCANA		BQMF-00135
Date	Time 24-hr clock	Treating Pressure PSI	Flow Rate B/M	Density LB/G	Volume BBL	Message		
09/10/2011	19:47:29	0	0.0	9.11	0.0			
09/10/2011	19:47:59	1	0.0	9.11	0.0			
09/10/2011	19:48:29	0	0.0	9.11	0.0			
09/10/2011	19:48:59	0	0.0	9.11	0.0			
09/10/2011	19:49:29	0	0.0	9.11	0.0			
09/10/2011	19:49:59	0	0.0	9.11	0.0			
09/10/2011	19:50:29	0	0.0	9.11	0.0			
09/10/2011	19:50:59	0	0.0	9.11	0.0			
09/10/2011	19:51:29	0	0.0	9.11	0.0			
09/10/2011	19:51:59	0	0.0	9.11	0.0			
09/10/2011	19:52:29	0	0.0	9.11	0.0			
09/10/2011	19:52:59	0	0.0	9.11	0.0			
09/10/2011	19:53:29	0	0.0	9.11	0.0			
09/10/2011	19:53:59	-0	0.0	9.11	0.0			
09/10/2011	19:54:29	0	0.0	9.11	0.0			
09/10/2011	19:54:59	0	0.0	9.11	0.0			
09/10/2011	19:55:29	-0	0.0	9.11	0.0			
09/10/2011	19:55:59	87	0.0	25.00	0.0			
09/10/2011	19:56:29	76	0.0	10.51	0.0			
09/10/2011	19:56:59	28	0.0	9.08	0.0			
09/10/2011	19:57:29	70	2.4	8.97	0.3			
09/10/2011	19:57:59	64	2.4	8.36	1.5			
09/10/2011	19:58:29	424	0.1	8.36	2.1			
09/10/2011	19:58:59	593	0.0	8.36	2.1			
09/10/2011	19:59:29	526	0.0	8.36	2.1			
09/10/2011	19:59:59	3683	0.0	8.36	2.1			
09/10/2011	20:00:29	3594	0.0	8.36	2.1			
09/10/2011	20:00:59	36	0.0	8.36	2.1			
09/10/2011	20:01:29	35	0.0	8.36	2.1			
09/10/2011	20:01:59	66	1.2	8.36	2.5			
09/10/2011	20:02:29	111	3.4	8.35	3.3			
09/10/2011	20:02:59	112	3.5	8.36	5.0			
09/10/2011	20:03:13	164	4.6	8.36	5.8	10bbls Water		
09/10/2011	20:03:14	164	4.8	8.36	5.9	10bbls Water		
09/10/2011	20:03:29	166	5.0	8.35	7.2			
09/10/2011	20:03:59	169	5.0	8.35	9.7			
09/10/2011	20:04:29	164	5.0	8.75	12.2			
09/10/2011	20:04:59	172	5.0	9.12	14.7			
09/10/2011	20:05:29	171	5.0	8.98	17.1			
09/10/2011	20:05:59	171	5.0	8.95	19.6			
09/10/2011	20:06:29	171	5.0	8.87	22.1			
09/10/2011	20:06:59	174	5.0	8.74	24.6			
09/10/2011	20:07:29	164	5.0	8.52	27.1			
09/10/2011	20:07:59	164	5.0	8.49	29.6			
09/10/2011	20:08:29	165	5.0	8.38	32.1			
09/10/2011	20:08:59	158	5.0	8.36	34.6			
09/10/2011	20:09:29	158	5.0	8.36	37.1			
09/10/2011	20:09:59	153	5.0	8.35	39.6			
09/10/2011	20:10:29	154	5.0	8.35	42.1			
09/10/2011	20:10:59	163	0.0	25.00	43.2			
09/10/2011	20:11:29	189	4.9	9.80	44.3			
09/10/2011	20:11:59	182	5.0	9.69	46.8			
09/10/2011	20:12:29	281	6.3	9.69	49.3			
09/10/2011	20:12:59	281	6.4	9.69	52.5			

Well			Field		Job Start		Customer		Job Number	
SGU 8503D-22			N PARACHUTE		Sep/10/2011		ENCANA		BQMF-00135	
Date	Time 24-hr clock	Treating Pressure PSI	Flow Rate B/M	Density LB/G	Volume BBL	Message				
09/10/2011	20:13:59	286	6.4	9.69	58.8					
09/10/2011	20:14:29	284	6.4	9.69	62.1					
09/10/2011	20:14:59	274	6.4	9.69	65.3					
09/10/2011	20:15:29	274	6.6	9.78	68.5					
09/10/2011	20:15:59	89	3.3	13.15	71.9					
09/10/2011	20:16:29	60	1.8	12.95	72.0					
09/10/2011	20:16:59	136	5.0	8.36	74.2					
09/10/2011	20:17:29	134	5.0	8.36	76.7					
09/10/2011	20:17:59	135	5.0	8.36	79.2					
09/10/2011	20:18:29	131	5.0	8.40	81.7					
09/10/2011	20:18:59	24	0.0	8.35	82.9					
09/10/2011	20:19:29	27	0.0	8.36	82.9					
09/10/2011	20:19:59	30	0.0	8.36	82.9					
09/10/2011	20:20:29	30	0.0	8.36	82.9					
09/10/2011	20:20:59	36	0.0	8.36	82.9					
09/10/2011	20:21:29	41	0.0	8.36	82.9					
09/10/2011	20:21:59	41	0.0	8.36	82.9					
09/10/2011	20:22:29	35	0.0	8.36	82.9					
09/10/2011	20:22:59	138	4.6	9.91	84.2					
09/10/2011	20:23:29	169	4.6	9.93	86.5					
09/10/2011	20:23:59	160	4.6	9.94	88.8					
09/10/2011	20:24:29	161	4.6	9.93	91.1					
09/10/2011	20:24:59	163	4.6	9.94	93.4					
09/10/2011	20:25:29	157	4.6	9.92	95.7					
09/10/2011	20:25:59	245	6.2	9.92	98.5					
09/10/2011	20:26:29	246	6.2	9.92	101.5					
09/10/2011	20:26:59	247	6.2	9.92	104.6					
09/10/2011	20:27:29	249	6.2	9.92	107.7					
09/10/2011	20:27:59	265	6.2	9.92	110.8					
09/10/2011	20:28:29	234	6.2	9.92	113.9					
09/10/2011	20:28:59	229	6.2	9.94	117.0					
09/10/2011	20:29:29	233	6.2	9.90	120.1					
09/10/2011	20:29:59	243	6.2	9.93	123.2					
09/10/2011	20:30:29	241	6.2	9.90	126.3					
09/10/2011	20:30:59	159	4.7	9.83	129.3					
09/10/2011	20:31:29	136	4.6	9.86	131.6					
09/10/2011	20:31:59	153	4.6	10.35	133.9					
09/10/2011	20:32:29	216	4.7	10.93	136.2					
09/10/2011	20:32:39	226	4.7	11.12	137.0	Reset Total, Vol = 136.97 bbl				
09/10/2011	20:32:59	243	4.8	11.21	138.5					
09/10/2011	20:33:03	243	4.8	11.16	138.9	Start Mixing Lead Slurry				
09/10/2011	20:33:05	241	4.8	11.13	139.0	286bbbls @ 11ppg				
09/10/2011	20:33:29	210	4.8	10.90	140.9					
09/10/2011	20:33:59	197	4.8	10.94	143.4					
09/10/2011	20:34:29	209	4.9	10.96	145.8					
09/10/2011	20:34:59	203	4.9	10.98	148.3					
09/10/2011	20:35:29	215	5.0	11.01	150.7					
09/10/2011	20:35:59	208	5.0	11.01	153.2					
09/10/2011	20:36:29	205	5.0	11.02	155.7					
09/10/2011	20:36:59	300	5.5	11.01	158.2					
09/10/2011	20:37:29	319	6.5	11.00	161.4					
09/10/2011	20:37:59	322	6.5	11.00	164.7					
09/10/2011	20:38:29	385	5.9	11.00	167.9					
09/10/2011	20:38:59	322	6.5	10.99	171.1					

Well			Field		Job Start		Customer		Job Number	
SGU 8503D-22			N PARACHUTE		Sep/10/2011		ENCANA		BQMF-00135	
Date	Time 24-hr clock	Treating Pressure PSI		Flow Rate B/M	Density LB/G		Volume BBL		Message	
09/10/2011	20:39:59	423		8.0	11.00		178.4			
09/10/2011	20:40:29	422		8.0	11.01		182.3			
09/10/2011	20:40:59	436		8.0	11.02		186.3			
09/10/2011	20:41:29	432		8.0	11.03		190.3			
09/10/2011	20:41:59	433		8.0	11.05		194.3			
09/10/2011	20:42:29	423		8.0	11.07		198.3			
09/10/2011	20:42:59	437		8.0	11.06		202.3			
09/10/2011	20:43:29	418		8.0	11.04		206.2			
09/10/2011	20:43:59	418		8.0	11.02		210.2			
09/10/2011	20:44:29	427		8.0	10.98		214.2			
09/10/2011	20:44:59	413		8.0	10.98		218.2			
09/10/2011	20:45:29	431		8.0	10.99		222.2			
09/10/2011	20:45:59	429		8.0	11.03		226.2			
09/10/2011	20:46:29	429		8.0	11.06		230.1			
09/10/2011	20:46:59	439		8.0	11.06		234.1			
09/10/2011	20:47:29	426		8.0	11.06		238.1			
09/10/2011	20:47:59	427		8.0	11.07		242.0			
09/10/2011	20:48:29	423		8.0	11.06		245.9			
09/10/2011	20:48:59	431		8.0	11.05		249.9			
09/10/2011	20:49:29	423		8.0	11.03		253.9			
09/10/2011	20:49:59	439		8.0	11.02		257.9			
09/10/2011	20:50:29	413		8.0	11.01		261.9			
09/10/2011	20:50:59	427		8.0	11.01		265.9			
09/10/2011	20:51:29	433		8.0	10.99		269.9			
09/10/2011	20:51:59	414		8.0	10.98		273.8			
09/10/2011	20:52:29	417		8.0	10.97		277.8			
09/10/2011	20:52:59	433		8.0	10.97		281.8			
09/10/2011	20:53:29	417		8.0	10.97		285.8			
09/10/2011	20:53:59	434		8.0	10.98		289.8			
09/10/2011	20:54:29	421		8.0	10.98		293.8			
09/10/2011	20:54:59	439		8.0	10.99		297.7			
09/10/2011	20:55:29	420		8.0	10.99		301.7			
09/10/2011	20:55:59	427		8.0	10.99		305.7			
09/10/2011	20:56:29	440		8.0	10.98		309.7			
09/10/2011	20:56:59	433		8.0	10.96		313.7			
09/10/2011	20:57:29	419		8.0	10.98		317.6			
09/10/2011	20:57:59	413		8.0	11.00		321.6			
09/10/2011	20:58:29	411		8.0	11.03		325.6			
09/10/2011	20:58:59	425		8.0	11.00		329.6			
09/10/2011	20:59:29	425		8.0	11.01		333.6			
09/10/2011	20:59:59	437		8.0	11.01		337.6			
09/10/2011	21:00:29	422		8.0	10.99		341.6			
09/10/2011	21:00:59	423		8.0	10.98		345.6			
09/10/2011	21:01:29	408		8.0	10.97		349.5			
09/10/2011	21:01:59	421		8.0	10.94		353.5			
09/10/2011	21:02:29	422		8.0	10.91		357.5			
09/10/2011	21:02:59	408		8.0	10.90		361.5			
09/10/2011	21:03:29	413		8.0	10.89		365.5			
09/10/2011	21:03:59	410		8.0	10.91		369.5			
09/10/2011	21:04:29	409		8.0	10.94		373.5			
09/10/2011	21:04:59	424		8.0	10.97		377.4			
09/10/2011	21:05:29	426		8.0	10.99		381.4			
09/10/2011	21:05:59	438		8.0	11.02		385.4			
09/10/2011	21:06:29	423		8.0	11.04		389.4			

Well			Field		Job Start	Customer	Job Number
SGU 8503D-22			N PARACHUTE		Sep/10/2011	ENCANA	BQMF-00135
Date	Time 24-hr clock	Treating Pressure PSI	Flow Rate B/M	Density LB/G	Volume BBL	Message	
09/10/2011	21:07:29	424	8.0	11.09	397.4		
09/10/2011	21:07:59	419	8.0	11.09	401.4		
09/10/2011	21:08:29	429	8.0	11.10	405.3		
09/10/2011	21:08:59	427	8.0	11.10	409.3		
09/10/2011	21:09:29	410	7.7	11.11	413.3		
09/10/2011	21:09:42	405	7.7	11.11	415.0	End Lead Slurry	
09/10/2011	21:09:59	314	6.5	11.05	416.9		
09/10/2011	21:10:29	320	6.5	11.08	420.2		
09/10/2011	21:10:59	331	6.5	11.16	423.5		
09/10/2011	21:11:29	322	6.5	11.22	426.7		
09/10/2011	21:11:59	221	5.0	11.31	429.7		
09/10/2011	21:12:29	233	4.9	11.42	432.2		
09/10/2011	21:12:59	235	4.9	11.61	434.6		
09/10/2011	21:13:29	247	4.9	11.81	437.1		
09/10/2011	21:13:36	247	4.9	11.86	437.6	Reset Total, Vol = 300.66 bbl	
09/10/2011	21:13:59	251	4.9	12.02	439.5		
09/10/2011	21:14:29	245	4.9	12.23	441.9		
09/10/2011	21:14:45	269	4.9	12.32	443.2	Start Mixing Tail Slurry	
09/10/2011	21:14:58	249	4.9	12.39	444.3	95bbls @ 12.5ppg	
09/10/2011	21:14:59	251	4.9	12.39	444.4	Sample= 12.5ppg	
09/10/2011	21:15:29	275	4.8	12.58	446.8		
09/10/2011	21:15:59	289	4.8	12.67	449.2		
09/10/2011	21:16:29	266	4.8	12.62	451.7		
09/10/2011	21:16:59	292	4.8	12.73	454.1		
09/10/2011	21:17:29	271	5.0	12.51	456.5		
09/10/2011	21:17:59	251	4.9	12.47	459.0		
09/10/2011	21:18:29	278	4.9	12.47	461.4		
09/10/2011	21:18:59	269	4.9	12.41	463.9		
09/10/2011	21:19:29	265	5.0	12.39	466.4		
09/10/2011	21:19:59	282	5.0	12.42	468.9		
09/10/2011	21:20:29	271	5.0	12.46	471.3		
09/10/2011	21:20:59	281	5.0	12.51	473.8		
09/10/2011	21:21:29	273	4.9	12.53	476.3		
09/10/2011	21:21:59	265	4.9	12.48	478.7		
09/10/2011	21:22:29	242	4.9	12.45	481.2		
09/10/2011	21:22:59	262	4.9	12.44	483.7		
09/10/2011	21:23:29	266	4.9	12.44	486.1		
09/10/2011	21:23:59	261	4.9	12.47	488.6		
09/10/2011	21:24:29	249	4.9	12.49	491.1		
09/10/2011	21:24:59	272	4.9	12.49	493.5		
09/10/2011	21:25:29	290	4.9	12.47	496.0		
09/10/2011	21:25:59	274	4.9	12.50	498.5		
09/10/2011	21:26:29	296	4.9	12.49	500.9		
09/10/2011	21:26:59	273	4.9	12.55	503.4		
09/10/2011	21:27:29	254	4.9	12.62	505.9		
09/10/2011	21:27:59	255	4.9	12.65	508.3		
09/10/2011	21:28:29	293	4.9	12.66	510.8		
09/10/2011	21:28:59	263	4.9	12.64	513.2		
09/10/2011	21:29:18	283	4.9	12.65	514.8	End Tail Slurry	
09/10/2011	21:29:20	269	4.9	12.65	515.0	Drop Top Plug	
09/10/2011	21:29:22	266	4.9	12.65	515.1	Wash Up On Plug	
09/10/2011	21:29:29	292	4.9	12.66	515.7		
09/10/2011	21:29:59	144	3.4	12.66	517.6		
09/10/2011	21:30:29	138	3.4	12.66	519.3		

Well			Field		Job Start	Customer		Job Number
SGU 8503D-22			N PARACHUTE		Sep/10/2011	ENCANA		BQMF-00135
Date	Time 24-hr clock	Treating Pressure PSI	Flow Rate B/M	Density LB/G	Volume BBL	Message		
09/10/2011	21:31:29	144	3.3	12.63	522.7			
09/10/2011	21:31:59	110	3.4	12.59	524.3			
09/10/2011	21:32:29	141	3.4	12.57	526.0			
09/10/2011	21:32:59	5	1.2	12.58	527.6			
09/10/2011	21:33:29	23	0.0	12.59	527.6			
09/10/2011	21:33:59	22	0.0	12.62	527.6			
09/10/2011	21:34:29	15	0.0	12.35	527.6			
09/10/2011	21:34:59	35	0.0	10.32	527.6			
09/10/2011	21:35:29	27	0.0	9.73	527.6			
09/10/2011	21:35:59	7	0.0	9.40	527.6			
09/10/2011	21:36:29	141	5.0	9.07	529.1			
09/10/2011	21:36:59	161	5.0	9.08	531.6			
09/10/2011	21:37:29	142	5.0	8.86	534.1			
09/10/2011	21:37:59	159	5.1	8.86	536.6			
09/10/2011	21:38:29	235	6.5	8.65	539.3			
09/10/2011	21:38:59	220	6.5	8.56	542.6			
09/10/2011	21:39:29	197	6.5	8.50	545.9			
09/10/2011	21:39:59	203	6.5	8.46	549.1			
09/10/2011	21:40:21	220	6.5	8.41	551.5	Start Displacement		
09/10/2011	21:40:22	208	6.5	8.41	551.6	158bbls Fresh H2o		
09/10/2011	21:40:29	207	6.5	8.41	552.4			
09/10/2011	21:40:59	211	6.5	8.39	555.6			
09/10/2011	21:41:29	211	6.5	8.37	558.9			
09/10/2011	21:41:59	233	6.5	8.35	562.2			
09/10/2011	21:42:29	217	6.5	8.34	565.4			
09/10/2011	21:42:59	227	6.5	8.32	568.7			
09/10/2011	21:43:29	251	6.5	8.32	571.9			
09/10/2011	21:43:59	244	6.5	8.30	575.2			
09/10/2011	21:44:29	259	6.5	8.31	578.4			
09/10/2011	21:44:59	264	6.5	8.30	581.7			
09/10/2011	21:45:29	266	6.5	8.30	584.9			
09/10/2011	21:45:59	264	6.5	8.30	588.2			
09/10/2011	21:46:29	287	6.4	8.35	591.4			
09/10/2011	21:46:59	275	6.4	8.36	594.6			
09/10/2011	21:47:29	288	6.4	8.36	597.8			
09/10/2011	21:47:59	295	6.4	8.36	601.0			
09/10/2011	21:48:29	300	6.4	8.36	604.2			
09/10/2011	21:48:56	311	6.4	8.36	607.1	Start Slurry Circulation		
09/10/2011	21:48:57	311	6.4	8.36	607.2	90bbls To Surface		
09/10/2011	21:48:59	311	6.4	8.36	607.4			
09/10/2011	21:49:29	319	6.4	8.36	610.6			
09/10/2011	21:49:59	349	6.4	8.36	613.8			
09/10/2011	21:50:29	365	6.4	8.36	617.0			
09/10/2011	21:50:59	386	6.4	8.36	620.2			
09/10/2011	21:51:29	388	6.4	8.36	623.4			
09/10/2011	21:51:59	405	6.4	8.36	626.6			
09/10/2011	21:52:29	400	6.4	8.36	629.8			
09/10/2011	21:52:59	412	6.4	8.36	633.0			
09/10/2011	21:53:29	421	6.4	8.36	636.2			
09/10/2011	21:53:59	444	6.4	8.36	639.4			
09/10/2011	21:54:29	459	6.4	8.36	642.6			
09/10/2011	21:54:59	433	6.4	8.36	645.8			
09/10/2011	21:55:29	460	6.4	8.36	649.0			
09/10/2011	21:55:59	480	6.4	8.36	652.2			



Well			Field		Job Start	Customer		Job Number
SGU 8503D-22			N PARACHUTE		Sep/10/2011	ENCANA		BQMF-00135
Date	Time 24-hr clock	Treating Pressure PSI	Flow Rate B/M	Density LB/G	Volume BBL	Message		
09/10/2011	21:56:59	490	6.4	8.36	658.6			
09/10/2011	21:57:29	484	6.4	8.36	661.8			
09/10/2011	21:57:59	450	5.0	8.36	664.7			
09/10/2011	21:58:29	453	4.9	8.36	667.1			
09/10/2011	21:58:59	457	5.0	8.36	669.6			
09/10/2011	21:59:29	466	5.0	8.36	672.1			
09/10/2011	21:59:59	415	3.5	8.36	674.2			
09/10/2011	22:00:29	392	3.5	8.36	676.0			
09/10/2011	22:00:59	428	3.5	8.36	677.7			
09/10/2011	22:01:29	391	2.0	8.36	679.2			
09/10/2011	22:01:59	371	2.0	8.36	680.2			
09/10/2011	22:02:29	375	2.0	8.36	681.2			
09/10/2011	22:02:59	380	2.0	8.36	682.1			
09/10/2011	22:03:29	376	2.0	8.36	683.1			
09/10/2011	22:03:59	380	2.0	8.36	684.1			
09/10/2011	22:04:29	377	2.0	8.36	685.1			
09/10/2011	22:04:59	377	2.0	8.36	686.1			
09/10/2011	22:05:29	374	2.0	8.36	687.1			
09/10/2011	22:05:59	415	2.0	8.36	688.1			
09/10/2011	22:06:29	416	2.0	8.36	689.0			
09/10/2011	22:06:59	896	0.0	8.36	689.7			
09/10/2011	22:07:20	892	0.0	8.36	689.7	Bump Top Plug		
09/10/2011	22:07:21	892	0.0	8.36	689.7	Bump To 900psi		
09/10/2011	22:07:29	891	0.0	8.36	689.7			
09/10/2011	22:07:59	890	0.0	8.36	689.7			
09/10/2011	22:08:29	885	0.0	8.36	689.7			
09/10/2011	22:08:59	883	0.0	8.36	689.7			
09/10/2011	22:09:29	883	0.0	8.36	689.7			
09/10/2011	22:09:59	882	0.0	8.36	689.7			
09/10/2011	22:10:29	883	0.0	8.36	689.7			
09/10/2011	22:10:59	883	0.0	8.36	689.7			
09/10/2011	22:11:29	858	0.0	8.36	689.7			
09/10/2011	22:11:59	5	0.0	8.36	689.7			
09/10/2011	22:12:13	7	0.0	8.36	689.7	Floats Held		
09/10/2011	22:12:29	7	0.0	8.36	689.7			
09/10/2011	22:12:59	8	0.0	8.36	689.7			
09/10/2011	22:13:29	8	0.0	8.36	689.7			
09/10/2011	22:13:59	8	0.0	8.36	689.7			
09/10/2011	22:14:29	9	0.0	8.36	689.7			
09/10/2011	22:14:59	9	0.0	8.36	689.7			
09/10/2011	22:15:29	62	3.7	8.16	690.3			
09/10/2011	22:15:59	11	0.4	8.35	691.5			
09/10/2011	22:16:29	29	1.1	8.25	691.7			
09/10/2011	22:16:59	71	5.2	8.35	694.1			
09/10/2011	22:17:29	15	0.8	8.36	695.5			
09/10/2011	22:17:59	17	0.5	8.37	696.3			
09/10/2011	22:18:29	181	2.7	8.40	697.3			
09/10/2011	22:18:59	474	6.4	8.39	700.2			
09/10/2011	22:19:29	644	7.8	8.40	703.8			
09/10/2011	22:19:59	646	7.8	8.39	707.7			
09/10/2011	22:20:29	642	15.3	8.40	716.3			
09/10/2011	22:20:59	646	7.7	8.36	720.6			
09/10/2011	22:21:29	15	0.0	8.36	722.6			
09/10/2011	22:21:59	10	0.0	8.36	722.6			

Well			Field		Job Start	Customer		Job Number
SGU 8503D-22			N PARACHUTE		Sep/10/2011	ENCANA		BQMF-00135
Date	Time 24-hr clock	Treating Pressure PSI	Flow Rate B/M	Density LB/G	Volume BBL	Message		
09/10/2011	22:22:59	9	0.0	8.36	722.6			
09/10/2011	22:23:29	13	0.3	8.36	722.6			
09/10/2011	22:23:59	281	4.9	8.38	723.8			
09/10/2011	22:24:29	281	5.0	8.38	726.3			
09/10/2011	22:24:59	307	5.0	8.37	728.8			
09/10/2011	22:25:29	682	7.7	8.36	731.7			
09/10/2011	22:25:59	415	6.9	8.36	735.3			
09/10/2011	22:26:29	687	7.8	8.36	738.9			
09/10/2011	22:26:59	680	7.8	8.36	742.8			
09/10/2011	22:27:29	16	0.0	8.36	744.1			
09/10/2011	22:27:59	13	0.0	8.36	744.1			
09/10/2011	22:28:29	12	0.0	8.36	744.1			
09/10/2011	22:28:59	32	0.0	8.36	744.1			
09/10/2011	22:29:29	29	0.0	8.36	744.1			
09/10/2011	22:29:59	16	0.0	8.36	744.1			
09/10/2011	22:30:29	17	0.0	8.36	744.1			
09/10/2011	22:30:59	21	0.0	8.36	744.1			
09/10/2011	22:31:29	21	0.0	8.36	744.1			
09/10/2011	22:31:59	21	0.0	8.36	744.1			
09/10/2011	22:32:29	21	0.0	8.36	744.1			
09/10/2011	22:32:59	21	0.0	8.36	744.1			
09/10/2011	22:33:29	17	0.0	8.36	744.1			
09/10/2011	22:33:59	17	0.0	8.36	744.1			
09/10/2011	22:34:29	25	0.0	8.36	744.2			
09/10/2011	22:34:59	112	0.0	8.36	744.2			
09/10/2011	22:35:29	118	0.0	8.36	744.2			
09/10/2011	22:35:59	120	0.0	8.37	744.2			
09/10/2011	22:36:29	28	0.0	8.36	744.2			
09/10/2011	22:36:59	16	0.0	8.36	744.2			
09/10/2011	22:37:29	10	0.0	8.36	744.2			
09/10/2011	22:37:59	9	0.0	8.36	744.2			
09/10/2011	22:38:29	8	0.0	8.36	744.2			
09/10/2011	22:38:59	9	0.0	8.37	744.2			
09/10/2011	22:39:29	8	0.0	8.37	744.2			
09/10/2011	22:39:59	8	0.0	8.37	744.2			
09/10/2011	22:40:29	8	0.0	8.37	744.2			
09/10/2011	22:40:59	8	0.0	8.37	744.2			
09/10/2011	22:41:29	8	0.0	8.37	744.2			
09/10/2011	22:41:59	9	0.0	8.37	744.2			
09/10/2011	22:42:29	9	0.0	8.37	744.2			
09/10/2011	22:42:59	9	0.0	8.37	744.2			
09/10/2011	22:43:29	9	0.0	8.37	744.2			
09/10/2011	22:43:59	9	0.0	8.37	744.2			

Well	Field	Job Start	Customer	Job Number
SGU 8503D-22	N PARACHUTE	Sep/10/2011	ENCANA	BQMF-00135

Post Job Summary

Average Pump Rates, bbl/min					Volume of Fluid Injected, bbl			
Slurry	N2	Mud	Maximum Rate		Total Slurry	Mud	Spacer	N2
5.8			21.4		744.2	0.0	138.8	
Treating Pressure Summary, psi					Breakdown Fluid			
Maximum	Final	Average	Bump Plug to	Breakdown	Type	Volume		Density
3739	8	259				bbl		lb/gal
Avg. N2 Percent		Designed Slurry Volume		Displacement	Mix Water Temp	Cement Circulated to Surface?		Volume
%		0.0 bbl		174.7 bbl	55 degF	<input checked="" type="checkbox"/>		bbl
						Washed Thru Perfs		To
						<input type="checkbox"/>		ft
Customer or Authorized Representative			Schlumberger Supervisor			Circulation Lost		Job Completed
MIKE QUINTANA			JASON CRICK			<input type="checkbox"/>		<input checked="" type="checkbox"/>
						-		-