

ANADARKO E&P COMPANY LP

Location: COLORADO Slot: SLOT#07 DOUTHIT 32-26HZ (2279'FSL & 330'FEL, SEC.26)
Field: WELD COUNTY (KERR MCGEE) Well: DOUTHIT 32-26HZ
Facility: SEC.26-T3N-R68W Wellbore: DOUTHIT 32-26HZ PWB

Plot reference wellpath is DOUTHIT 32-26HZ (REV-C.0) PWP

True vertical depths are referenced to XTREME 8 (RKB)

Measured depths are referenced to XTREME 8 (RKB)

XTREME 8 (RKB) to Mean Sea Level: 4951 feet

Mean Sea Level to Mud line (At Slot: SLOT#07 DOUTHIT 32-26HZ (2279'FSL & 330'FEL, SEC.26)): 0 feet

Coordinates are in feet referenced to Slot

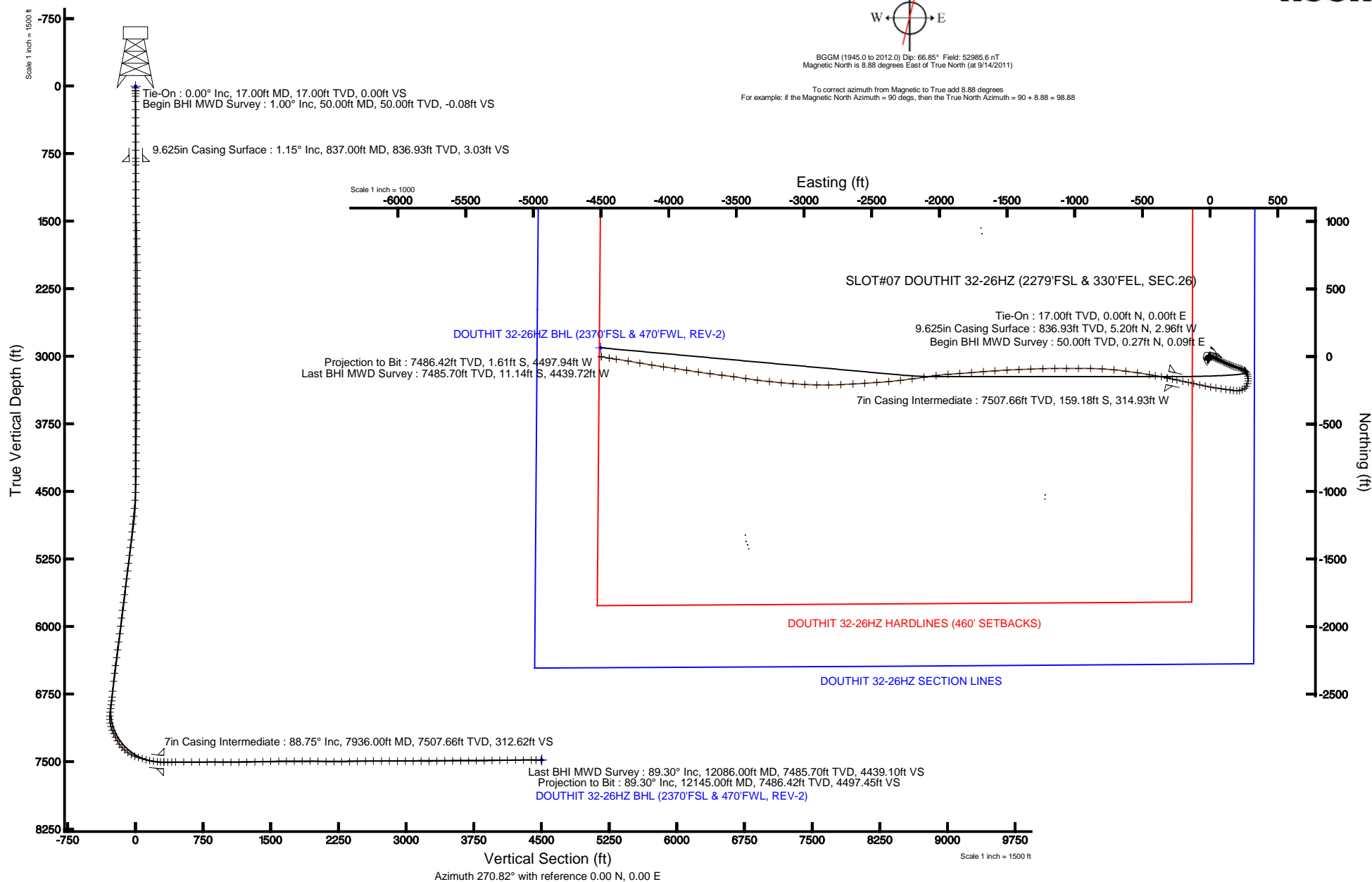
Grid System: NAD83 / Lambert Colorado SP, Northern Zone (501), US feet

North Reference: True north

Scale: True distance

Depths are in feet

Created by: wilsjef02 on 1/31/2012





Actual Wellpath Report

DOUTHIT 32-26HZ AWP

Page 1 of 6



REFERENCE WELLPATH IDENTIFICATION

Operator	ANADARKO E&P COMPANY LP	Slot	SLOT#07 DOUTHIT 32-26HZ (2279'FSL & 330'FEL, SEC.26)
Area	COLORADO	Well	DOUTHIT 32-26HZ
Field	WELD COUNTY (KERR MCGEE)	Wellbore	DOUTHIT 32-26HZ AWB
Facility	SEC.26-T3N-R68W		

REPORT SETUP INFORMATION

Projection System	NAD83 / Lambert Colorado SP, Northern Zone (501), US feet	Software System	WellArchitect® 3.0.2
North Reference	True	User	Wilsjef02
Scale	0.999957	Report Generated	1/31/2012 at 3:47:18 PM
Convergence at slot	0.35° East	Database/Source file	WA_ANADARKO/DOUTHIT_32-26HZ_AWB.xml

WELLPATH LOCATION

	Local coordinates		Grid coordinates		Geographic coordinates	
	North[ft]	East[ft]	Easting[US ft]	Northing[US ft]	Latitude	Longitude
Slot Location	1323.35	3433.89	3150342.05	1314716.84	40°11'45.751"N	104°57'42.509"W
Facility Reference Pt			3146916.23	1313373.21	40°11'32.676"N	104°58'26.760"W
Field Reference Pt			3197771.84	1268891.29	40°04'09.600"N	104°47'36.000"W

WELLPATH DATUM

Calculation method	Minimum curvature	XTREME 8 (RKB) to Facility Vertical Datum	4951.00ft
Horizontal Reference Pt	Slot	XTREME 8 (RKB) to Mean Sea Level	4951.00ft
Vertical Reference Pt	XTREME 8 (RKB)	XTREME 8 (RKB) to Mud Line at Slot (SLOT#07 DOUTHIT 32-26HZ (2279'FSL & 330'FEL, SEC.26))	4951.00ft
MD Reference Pt	XTREME 8 (RKB)	Section Origin	N 0.00, E 0.00 ft
Field Vertical Reference	Mean Sea Level	Section Azimuth	270.82°



Actual Wellpath Report

DOUTHIT 32-26HZ AWP

Page 2 of 6



REFERENCE WELLPATH IDENTIFICATION

Operator	ANADARKO E&P COMPANY LP	Slot	SLOT#07 DOUTHIT 32-26HZ (2279'FSL & 330'FEL, SEC.26)
Area	COLORADO	Well	DOUTHIT 32-26HZ
Field	WELD COUNTY (KERR MCGEE)	Wellbore	DOUTHIT 32-26HZ AWB
Facility	SEC.26-T3N-R68W		

WELLPATH DATA (157 stations) † = interpolated/extrapolated station

MD [ft]	Inclination [°]	Azimuth [°]	TVD [ft]	Vert Sect [ft]	North [ft]	East [ft]	Latitude	Longitude	DLS [°/100ft]	Comments
0.00†	0.000	17.300	0.00	0.00	0.00	0.00	40°11'45.751"N	104°57'42.509"W	0.00	
17.00	0.000	17.300	17.00	0.00	0.00	0.00	40°11'45.751"N	104°57'42.509"W	0.00	Tie-On
50.00	1.000	17.300	50.00	-0.08	0.27	0.09	40°11'45.754"N	104°57'42.508"W	3.03	Begin BHI MWD Survey
80.00	1.000	6.400	79.99	-0.18	0.79	0.19	40°11'45.759"N	104°57'42.507"W	0.63	
110.00	0.900	359.300	109.99	-0.20	1.28	0.22	40°11'45.764"N	104°57'42.506"W	0.51	
170.00	0.800	350.500	169.98	-0.11	2.17	0.14	40°11'45.772"N	104°57'42.507"W	0.27	
260.00	0.900	345.100	259.97	0.19	3.47	-0.14	40°11'45.785"N	104°57'42.511"W	0.14	
350.00	0.600	0.500	349.97	0.39	4.62	-0.32	40°11'45.797"N	104°57'42.513"W	0.40	
440.00	0.500	352.600	439.96	0.44	5.48	-0.37	40°11'45.805"N	104°57'42.514"W	0.14	
530.00	0.600	324.300	529.96	0.78	6.25	-0.69	40°11'45.813"N	104°57'42.518"W	0.32	
620.00	0.500	311.000	619.95	1.36	6.90	-1.26	40°11'45.819"N	104°57'42.525"W	0.18	
710.00	0.500	235.500	709.95	1.98	6.93	-1.88	40°11'45.819"N	104°57'42.533"W	0.68	
800.00	1.200	210.100	799.94	2.76	5.89	-2.68	40°11'45.809"N	104°57'42.544"W	0.86	
876.00	1.200	175.800	875.92	3.08	4.41	-3.02	40°11'45.795"N	104°57'42.548"W	0.93	
968.00	1.500	184.600	967.90	3.08	2.25	-3.05	40°11'45.773"N	104°57'42.548"W	0.40	
1060.00	1.900	184.300	1059.86	3.25	-0.47	-3.26	40°11'45.746"N	104°57'42.551"W	0.43	
1150.00	2.000	189.800	1149.81	3.58	-3.51	-3.64	40°11'45.716"N	104°57'42.556"W	0.24	
1243.00	2.200	193.300	1242.74	4.22	-6.84	-4.32	40°11'45.683"N	104°57'42.565"W	0.26	
1334.00	3.000	192.500	1333.65	5.08	-10.87	-5.24	40°11'45.644"N	104°57'42.577"W	0.88	
1426.00	3.200	199.000	1425.52	6.37	-15.65	-6.60	40°11'45.596"N	104°57'42.594"W	0.44	
1517.00	2.800	212.200	1516.39	8.32	-19.93	-8.61	40°11'45.554"N	104°57'42.620"W	0.87	
1604.00	1.800	220.700	1603.32	10.30	-22.76	-10.63	40°11'45.526"N	104°57'42.646"W	1.21	
1694.00	0.900	214.800	1693.29	11.61	-24.41	-11.96	40°11'45.510"N	104°57'42.663"W	1.01	
1782.00	0.700	238.100	1781.29	12.44	-25.27	-12.81	40°11'45.501"N	104°57'42.674"W	0.43	
1871.00	0.900	242.500	1870.28	13.52	-25.88	-13.89	40°11'45.495"N	104°57'42.688"W	0.23	
1959.00	1.100	246.000	1958.26	14.89	-26.54	-15.27	40°11'45.489"N	104°57'42.706"W	0.24	
2046.00	1.000	16.600	2045.26	15.44	-26.15	-15.82	40°11'45.493"N	104°57'42.713"W	2.19	
2132.00	0.500	347.600	2131.25	15.32	-25.07	-15.69	40°11'45.503"N	104°57'42.711"W	0.71	
2220.00	0.400	348.800	2219.25	15.48	-24.39	-15.83	40°11'45.510"N	104°57'42.713"W	0.11	
2310.00	0.600	350.900	2309.24	15.62	-23.62	-15.96	40°11'45.518"N	104°57'42.715"W	0.22	
2398.00	0.600	303.200	2397.24	16.09	-22.91	-16.42	40°11'45.525"N	104°57'42.721"W	0.55	
2486.00	1.200	315.300	2485.23	17.14	-22.00	-17.46	40°11'45.534"N	104°57'42.734"W	0.71	
2574.00	0.700	336.800	2573.22	18.01	-20.85	-18.32	40°11'45.545"N	104°57'42.745"W	0.69	
2662.00	0.800	47.200	2661.21	17.79	-19.94	-18.08	40°11'45.554"N	104°57'42.742"W	0.99	
2750.00	0.800	40.100	2749.20	16.95	-19.05	-17.23	40°11'45.563"N	104°57'42.731"W	0.11	
2839.00	0.600	14.300	2838.20	16.45	-18.13	-16.71	40°11'45.572"N	104°57'42.724"W	0.41	
2927.00	1.000	22.600	2926.19	16.06	-16.97	-16.31	40°11'45.583"N	104°57'42.719"W	0.47	
3013.00	1.500	37.900	3012.17	15.10	-15.39	-15.33	40°11'45.599"N	104°57'42.707"W	0.69	
3100.00	1.300	31.800	3099.14	13.91	-13.65	-14.11	40°11'45.616"N	104°57'42.691"W	0.29	
3188.00	1.000	27.600	3187.12	13.05	-12.12	-13.22	40°11'45.631"N	104°57'42.679"W	0.35	
3276.00	0.900	39.600	3275.11	12.27	-10.91	-12.43	40°11'45.643"N	104°57'42.669"W	0.25	
3366.00	0.700	22.200	3365.10	11.63	-9.86	-11.77	40°11'45.654"N	104°57'42.661"W	0.35	
3454.00	0.600	24.600	3453.10	11.25	-8.94	-11.38	40°11'45.663"N	104°57'42.656"W	0.12	
3542.00	0.900	3.200	3541.09	11.03	-7.83	-11.14	40°11'45.674"N	104°57'42.653"W	0.46	
3629.00	1.000	30.000	3628.08	10.63	-6.49	-10.73	40°11'45.687"N	104°57'42.647"W	0.52	
3717.00	1.200	39.000	3716.06	9.69	-5.11	-9.76	40°11'45.700"N	104°57'42.635"W	0.30	
3806.00	1.200	26.800	3805.04	8.70	-3.55	-8.76	40°11'45.716"N	104°57'42.622"W	0.29	
3894.00	1.400	38.400	3893.02	7.65	-1.89	-7.67	40°11'45.732"N	104°57'42.608"W	0.37	
3984.00	0.900	45.100	3983.00	6.48	-0.53	-6.49	40°11'45.746"N	104°57'42.593"W	0.57	
4074.00	0.200	87.300	4073.00	5.83	-0.02	-5.83	40°11'45.751"N	104°57'42.584"W	0.85	
4163.00	0.500	155.900	4161.99	5.51	-0.37	-5.52	40°11'45.747"N	104°57'42.580"W	0.52	
4249.00	0.500	197.000	4247.99	5.46	-1.07	-5.48	40°11'45.740"N	104°57'42.580"W	0.41	
4338.00	0.400	88.100	4336.99	5.26	-1.43	-5.28	40°11'45.737"N	104°57'42.577"W	0.83	
4426.00	1.800	85.400	4424.97	3.57	-1.31	-3.59	40°11'45.738"N	104°57'42.555"W	1.59	
4512.00	3.000	82.700	4510.89	0.00	-0.92	-0.01	40°11'45.742"N	104°57'42.509"W	1.40	
4601.00	4.400	92.100	4599.71	-5.72	-0.75	5.71	40°11'45.744"N	104°57'42.435"W	1.71	
4690.00	5.400	99.000	4688.38	-13.28	-1.53	13.26	40°11'45.736"N	104°57'42.338"W	1.30	
4778.00	6.000	105.900	4775.95	-21.82	-3.43	21.77	40°11'45.717"N	104°57'42.228"W	1.03	
4866.00	6.200	114.800	4863.45	-30.60	-6.69	30.51	40°11'45.685"N	104°57'42.116"W	1.10	
4956.00	6.300	118.100	4952.92	-39.43	-11.05	39.27	40°11'45.642"N	104°57'42.003"W	0.41	



Actual Wellpath Report

DOUTHIT 32-26HZ AWP

Page 3 of 6



REFERENCE WELLPATH IDENTIFICATION			
Operator	ANADARKO E&P COMPANY LP	Slot	SLOT#07 DOUTHIT 32-26HZ (2279'FSL & 330'FEL, SEC.26)
Area	COLORADO	Well	DOUTHIT 32-26HZ
Field	WELD COUNTY (KERR MCGEE)	Wellbore	DOUTHIT 32-26HZ AWB
Facility	SEC.26-T3N-R68W		

WELLPATH DATA (157 stations) † = interpolated/extrapolated station										
MD [ft]	Inclination [°]	Azimuth [°]	TVD [ft]	Vert Sect [ft]	North [ft]	East [ft]	Latitude	Longitude	DLS [°/100ft]	Comments
5043.00	6.700	118.600	5039.36	-48.16	-15.73	47.94	40°11'45.596"N	104°57'41.891"W	0.46	
5129.00	7.100	113.900	5124.73	-57.49	-20.28	57.20	40°11'45.551"N	104°57'41.772"W	0.80	
5218.00	7.600	115.300	5213.00	-67.91	-25.03	67.55	40°11'45.504"N	104°57'41.638"W	0.60	
5305.00	7.800	114.100	5299.22	-78.57	-29.90	78.14	40°11'45.456"N	104°57'41.502"W	0.29	
5391.00	9.000	118.500	5384.30	-89.88	-35.49	89.38	40°11'45.400"N	104°57'41.357"W	1.58	
5479.00	7.900	118.000	5471.34	-101.36	-41.61	100.77	40°11'45.340"N	104°57'41.210"W	1.25	
5569.00	7.300	118.700	5560.55	-111.92	-47.26	111.25	40°11'45.284"N	104°57'41.075"W	0.67	
5657.00	8.200	111.900	5647.75	-122.71	-52.29	121.98	40°11'45.234"N	104°57'40.937"W	1.46	
5745.00	8.100	107.100	5734.86	-134.52	-56.45	133.73	40°11'45.193"N	104°57'40.786"W	0.78	
5833.00	7.100	110.800	5822.08	-145.58	-60.21	144.74	40°11'45.156"N	104°57'40.644"W	1.26	
5919.00	7.100	114.000	5907.42	-155.47	-64.26	154.56	40°11'45.116"N	104°57'40.517"W	0.46	
6009.00	7.200	118.500	5996.73	-165.57	-69.21	164.60	40°11'45.067"N	104°57'40.388"W	0.63	
6097.00	8.000	109.800	6083.95	-176.25	-73.92	175.21	40°11'45.021"N	104°57'40.251"W	1.59	
6187.00	8.100	104.600	6173.07	-188.33	-77.64	187.23	40°11'44.984"N	104°57'40.096"W	0.82	
6276.00	7.500	104.300	6261.25	-200.07	-80.65	198.93	40°11'44.954"N	104°57'39.945"W	0.68	
6363.00	7.700	101.000	6347.48	-211.33	-83.17	210.15	40°11'44.929"N	104°57'39.801"W	0.55	
6452.00	8.100	109.900	6435.64	-223.12	-86.44	221.90	40°11'44.897"N	104°57'39.649"W	1.44	
6539.00	7.800	118.900	6521.81	-234.12	-91.38	232.83	40°11'44.848"N	104°57'39.509"W	1.47	
6629.00	6.700	117.600	6611.09	-244.20	-96.76	242.83	40°11'44.795"N	104°57'39.380"W	1.24	
6740.00	5.600	117.400	6721.45	-254.82	-102.25	253.38	40°11'44.741"N	104°57'39.244"W	0.99	
6806.00	6.200	128.500	6787.10	-260.52	-105.95	259.03	40°11'44.704"N	104°57'39.171"W	1.95	
6849.00	10.900	141.500	6829.61	-264.94	-110.58	263.38	40°11'44.658"N	104°57'39.115"W	11.75	
6892.00	15.400	146.400	6871.47	-270.75	-118.53	269.07	40°11'44.580"N	104°57'39.042"W	10.77	
6937.00	19.700	155.500	6914.38	-277.37	-130.41	275.53	40°11'44.462"N	104°57'38.958"W	11.31	
6980.00	21.300	166.000	6954.67	-282.47	-144.59	280.43	40°11'44.322"N	104°57'38.895"W	9.31	
7024.00	24.600	176.500	6995.20	-285.21	-161.50	282.92	40°11'44.155"N	104°57'38.863"W	11.93	
7068.00	27.000	185.800	7034.82	-285.03	-180.59	282.47	40°11'43.966"N	104°57'38.869"W	10.68	
7113.00	28.400	197.100	7074.69	-281.14	-200.99	278.29	40°11'43.765"N	104°57'38.923"W	12.06	
7157.00	27.600	212.700	7113.60	-272.82	-219.60	269.69	40°11'43.581"N	104°57'39.034"W	16.70	
7201.00	27.300	229.800	7152.70	-259.80	-234.71	256.46	40°11'43.432"N	104°57'39.204"W	17.88	
7246.00	28.200	242.300	7192.56	-242.66	-246.32	239.15	40°11'43.317"N	104°57'39.427"W	13.07	
7291.00	27.600	262.000	7232.42	-222.97	-252.73	219.37	40°11'43.254"N	104°57'39.682"W	20.45	
7336.00	28.900	273.600	7272.09	-201.80	-253.50	198.18	40°11'43.246"N	104°57'39.955"W	12.52	
7381.00	35.000	277.500	7310.25	-178.09	-251.13	174.50	40°11'43.269"N	104°57'40.260"W	14.30	
7424.00	41.200	277.100	7344.08	-151.74	-247.77	148.20	40°11'43.303"N	104°57'40.599"W	14.43	
7467.00	48.900	278.400	7374.43	-121.56	-243.64	118.07	40°11'43.343"N	104°57'40.987"W	18.03	
7512.00	55.100	277.800	7402.12	-86.40	-238.66	82.98	40°11'43.393"N	104°57'41.440"W	13.82	
7557.00	62.800	279.200	7425.32	-48.22	-232.94	44.89	40°11'43.449"N	104°57'41.931"W	17.32	
7600.00	69.200	280.400	7442.80	-9.45	-226.25	6.20	40°11'43.515"N	104°57'42.429"W	15.10	
7643.00	73.500	281.400	7456.55	30.66	-218.54	-33.80	40°11'43.591"N	104°57'42.945"W	10.24	
7688.00	74.000	282.000	7469.14	73.08	-209.78	-76.10	40°11'43.678"N	104°57'43.490"W	1.70	
7733.00	74.700	282.100	7481.28	115.58	-200.74	-118.48	40°11'43.767"N	104°57'44.036"W	1.57	
7776.00	79.200	281.800	7490.99	156.68	-192.07	-159.45	40°11'43.853"N	104°57'44.564"W	10.49	
7819.00	81.400	282.000	7498.23	198.27	-183.33	-200.92	40°11'43.939"N	104°57'45.098"W	5.14	
7864.00	84.900	281.800	7503.60	242.11	-174.12	-244.63	40°11'44.030"N	104°57'45.661"W	7.79	
7898.00	86.600	282.400	7506.12	275.36	-167.01	-277.78	40°11'44.101"N	104°57'46.089"W	5.30	
7936.00†	88.752	281.392	7507.66	312.62	-159.18	-314.93	40°11'44.178"N	104°57'46.567"W	6.25	7" Casing Point
7981.00	91.300	280.200	7507.64	356.93	-150.75	-359.13	40°11'44.261"N	104°57'47.137"W	6.25	
8026.00	90.800	280.500	7506.81	401.30	-142.67	-403.39	40°11'44.341"N	104°57'47.707"W	1.30	
8070.00	90.600	280.300	7506.27	444.69	-134.73	-446.67	40°11'44.420"N	104°57'48.265"W	0.64	
8159.00	89.900	277.800	7505.89	532.76	-120.73	-534.55	40°11'44.558"N	104°57'49.398"W	2.92	
8248.00	89.900	277.800	7506.04	621.10	-108.65	-622.73	40°11'44.677"N	104°57'50.534"W	0.00	
8335.00	89.400	275.500	7506.57	707.65	-98.58	-709.14	40°11'44.777"N	104°57'51.647"W	2.71	
8421.00	89.600	273.400	7507.32	793.47	-91.91	-794.87	40°11'44.843"N	104°57'52.752"W	2.45	
8508.00	89.600	271.000	7507.93	880.43	-88.57	-881.80	40°11'44.876"N	104°57'53.872"W	2.76	
8597.00	89.500	269.700	7508.63	969.43	-88.02	-970.79	40°11'44.881"N	104°57'55.019"W	1.46	
8686.00	89.500	269.900	7509.41	1058.41	-88.33	-1059.78	40°11'44.878"N	104°57'56.166"W	0.22	
8773.00	90.300	269.700	7509.56	1145.39	-88.64	-1146.78	40°11'44.875"N	104°57'57.287"W	0.95	
8861.00	90.600	268.700	7508.87	1233.35	-89.87	-1234.77	40°11'44.863"N	104°57'58.421"W	1.19	
8951.00	92.500	267.700	7506.43	1323.22	-92.69	-1324.69	40°11'44.835"N	104°57'59.580"W	2.39	



Actual Wellpath Report

DOUTHIT 32-26HZ AWP

Page 4 of 6



REFERENCE WELLPATH IDENTIFICATION

Operator	ANADARKO E&P COMPANY LP	Slot	SLOT#07 DOUTHIT 32-26HZ (2279'FSL & 330'FEL, SEC.26)
Area	COLORADO	Well	DOUTHIT 32-26HZ
Field	WELD COUNTY (KERR MCGEE)	Wellbore	DOUTHIT 32-26HZ AWB
Facility	SEC.26-T3N-R68W		

WELLPATH DATA (157 stations)

MD [ft]	Inclination [°]	Azimuth [°]	TVD [ft]	Vert Sect [ft]	North [ft]	East [ft]	Latitude	Longitude	DLS [°/100ft]	Comments
9038.00	92.300	267.700	7502.79	1410.02	-96.18	-1411.54	40°11'44.800"N	104°58'00.699"W	0.23	
9126.00	91.700	266.800	7499.72	1497.79	-100.40	-1499.39	40°11'44.758"N	104°58'01.831"W	1.23	
9216.00	90.700	265.900	7497.83	1587.49	-106.13	-1589.18	40°11'44.702"N	104°58'02.988"W	1.49	
9302.00	90.500	266.100	7496.93	1673.19	-112.13	-1674.97	40°11'44.642"N	104°58'04.093"W	0.33	
9389.00	89.400	265.000	7497.01	1759.81	-118.88	-1761.70	40°11'44.576"N	104°58'05.211"W	1.79	
9477.00	90.100	266.100	7497.39	1847.44	-125.70	-1849.43	40°11'44.508"N	104°58'06.342"W	1.48	
9564.00	90.300	266.200	7497.09	1934.15	-131.55	-1936.24	40°11'44.450"N	104°58'07.460"W	0.26	
9653.00	87.000	261.900	7499.19	2022.47	-140.76	-2024.70	40°11'44.359"N	104°58'08.600"W	6.09	
9743.00	87.900	261.700	7503.19	2111.27	-153.59	-2113.69	40°11'44.232"N	104°58'09.747"W	1.02	
9831.00	90.000	262.500	7504.80	2198.23	-165.68	-2200.84	40°11'44.113"N	104°58'10.870"W	2.55	
9918.00	90.700	263.200	7504.27	2284.39	-176.51	-2287.16	40°11'44.006"N	104°58'11.982"W	1.14	
10005.00	92.200	264.900	7502.07	2370.75	-185.52	-2373.65	40°11'43.917"N	104°58'13.097"W	2.61	
10094.00	91.700	266.500	7499.04	2459.34	-192.19	-2462.35	40°11'43.851"N	104°58'14.240"W	1.88	
10183.00	91.200	266.200	7496.79	2548.04	-197.86	-2551.14	40°11'43.794"N	104°58'15.384"W	0.66	
10271.00	90.600	266.700	7495.41	2635.77	-203.30	-2638.96	40°11'43.741"N	104°58'16.516"W	0.89	
10361.00	88.700	267.200	7495.96	2725.56	-208.09	-2728.83	40°11'43.693"N	104°58'17.674"W	2.18	
10450.00	89.300	269.200	7497.51	2814.45	-210.89	-2817.76	40°11'43.665"N	104°58'18.820"W	2.35	
10538.00	90.300	271.800	7497.82	2902.44	-210.12	-2905.75	40°11'43.673"N	104°58'19.954"W	3.17	
10627.00	90.300	272.600	7497.35	2991.41	-206.70	-2994.68	40°11'43.707"N	104°58'21.100"W	0.90	
10713.00	89.900	274.600	7497.20	3077.30	-201.30	-3080.51	40°11'43.760"N	104°58'22.206"W	2.37	
10801.00	89.200	274.800	7497.89	3165.10	-194.09	-3168.21	40°11'43.831"N	104°58'23.336"W	0.83	
10889.00	90.300	276.100	7498.28	3252.81	-185.74	-3255.81	40°11'43.913"N	104°58'24.465"W	1.94	
10978.00	91.100	277.600	7497.19	3341.30	-175.12	-3344.16	40°11'44.018"N	104°58'25.603"W	1.91	
11066.00	91.500	278.600	7495.19	3428.57	-162.73	-3431.26	40°11'44.141"N	104°58'26.726"W	1.22	
11154.00	90.400	277.900	7493.73	3515.82	-150.10	-3518.34	40°11'44.265"N	104°58'27.848"W	1.48	
11243.00	89.600	276.900	7493.73	3604.23	-138.64	-3606.59	40°11'44.378"N	104°58'28.985"W	1.44	
11331.00	89.700	277.500	7494.27	3691.69	-127.61	-3693.90	40°11'44.487"N	104°58'30.110"W	0.69	
11418.00	90.100	278.600	7494.42	3777.99	-115.43	-3780.04	40°11'44.608"N	104°58'31.220"W	1.35	
11506.00	91.600	278.700	7493.12	3865.16	-102.19	-3867.03	40°11'44.738"N	104°58'32.341"W	1.71	
11594.00	91.400	278.600	7490.81	3952.31	-88.96	-3954.00	40°11'44.869"N	104°58'33.462"W	0.25	
11680.00	91.500	278.600	7488.64	4037.49	-76.11	-4039.00	40°11'44.996"N	104°58'34.558"W	0.12	
11767.00	91.500	278.700	7486.36	4123.65	-63.03	-4124.98	40°11'45.125"N	104°58'35.666"W	0.11	
11856.00	90.200	279.900	7485.04	4211.67	-48.65	-4212.80	40°11'45.267"N	104°58'36.797"W	1.99	
11944.00	90.000	279.300	7484.89	4298.64	-33.97	-4299.57	40°11'45.412"N	104°58'37.916"W	0.72	
12034.00	89.600	279.200	7485.20	4387.66	-19.50	-4388.39	40°11'45.554"N	104°58'39.060"W	0.46	
12086.00	89.300	279.300	7485.70	4439.10	-11.14	-4439.72	40°11'45.637"N	104°58'39.722"W	0.61	Last BHI MWD Survey
12145.00	89.300	279.300	7486.42	4497.45	-1.61	-4497.94	40°11'45.731"N	104°58'40.472"W	0.00	Projection to Bit

HOLE & CASING SECTIONS - Ref Wellbore: DOUTHIT 32-26HZ AWB Ref Wellpath: DOUTHIT 32-26HZ AWP

String/Diameter	Start MD [ft]	End MD [ft]	Interval [ft]	Start TVD [ft]	End TVD [ft]	Start N/S [ft]	Start E/W [ft]	End N/S [ft]	End E/W [ft]
13.5in Open Hole	17.00	837.00	820.00	17.00	836.93	0.00	0.00	5.20	-2.96
9.625in Casing Surface	17.00	837.00	820.00	17.00	836.93	0.00	0.00	5.20	-2.96
8.75in Open Hole	837.00	7936.00	7099.00	836.93	7507.66	5.20	-2.96	-159.18	-314.93
7in Casing Intermediate	17.00	7936.00	7919.00	17.00	7507.66	0.00	0.00	-159.18	-314.93
6.125in Open Hole	7936.00	12145.00	4209.00	7507.66	7486.42	-159.18	-314.93	-1.61	-4497.94



Actual Wellpath Report

DOUTHIT 32-26HZ AWP

Page 5 of 6



REFERENCE WELLPATH IDENTIFICATION

Operator	ANADARKO E&P COMPANY LP	Slot	SLOT#07 DOUTHIT 32-26HZ (2279'FSL & 330'FEL, SEC.26)
Area	COLORADO	Well	DOUTHIT 32-26HZ
Field	WELD COUNTY (KERR MCGEE)	Wellbore	DOUTHIT 32-26HZ AWB
Facility	SEC.26-T3N-R68W		

TARGETS

Name	MD [ft]	TVD [ft]	North [ft]	East [ft]	Grid East [US ft]	Grid North [US ft]	Latitude	Longitude	Shape
DOUTHIT 32-26HZ SECTION LINES		0.00	0.00	0.00	3150342.05	1314716.84	40°11'45.751"N	104°57'42.509"W	polygon
DOUTHIT 32-26HZ BHL (2370'FSL & 470'FWL, REV-2)		7484.00	64.64	-4503.00	3145838.94	1314754.15	40°11'46.386"N	104°58'40.537"W	point
DOUTHIT 32-26HZ BHL ON PLAT (2320'FSL & 470'FWL, REV-1)		7484.00	14.68	-4502.98	3145839.27	1314704.19	40°11'45.892"N	104°58'40.537"W	point
DOUTHIT 32-26HZ HARDLINES (460' SETBACKS)		7484.00	0.00	0.00	3150342.05	1314716.84	40°11'45.751"N	104°57'42.509"W	polygon

WELLPATH COMPOSITION - Ref Wellbore: DOUTHIT 32-26HZ AWB Ref Wellpath: DOUTHIT 32-26HZ AWP

Start MD [ft]	End MD [ft]	Positional Uncertainty Model	Log Name/Comment	Wellbore
17.00	7898.00	NaviTrak (Standard)	BHI MWD SURVEY 8 3/4" HOLE <50-7898>	DOUTHIT 32-26HZ AWB
7898.00	12086.00	NaviTrak (Standard)	BHI MWD SURVEY 6 1/8" HOLE <7981-12086>	DOUTHIT 32-26HZ AWB
12086.00	12145.00	Blind Drilling (std)	Projection to bit	DOUTHIT 32-26HZ AWB



Actual Wellpath Report

DOUTHIT 32-26HZ AWP

Page 6 of 6



REFERENCE WELLPATH IDENTIFICATION

Operator	ANADARKO E&P COMPANY LP	Slot	SLOT#07 DOUTHIT 32-26HZ (2279'FSL & 330'FEL, SEC.26)
Area	COLORADO	Well	DOUTHIT 32-26HZ
Field	WELD COUNTY (KERR MCGEE)	Wellbore	DOUTHIT 32-26HZ AWB
Facility	SEC.26-T3N-R68W		

WELLPATH COMMENTS

MD [ft]	Inclination [°]	Azimuth [°]	TVD [ft]	Comment
17.00	0.000	17.300	17.00	Tie-On
50.00	1.000	17.300	50.00	Begin BHI MWD Survey
7936.00	88.752	281.392	7507.66	7" Casing Point
12086.00	89.300	279.300	7485.70	Last BHI MWD Survey
12145.00	89.300	279.300	7486.42	Projection to Bit