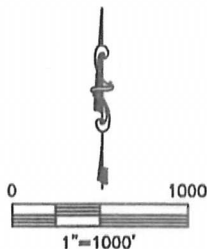
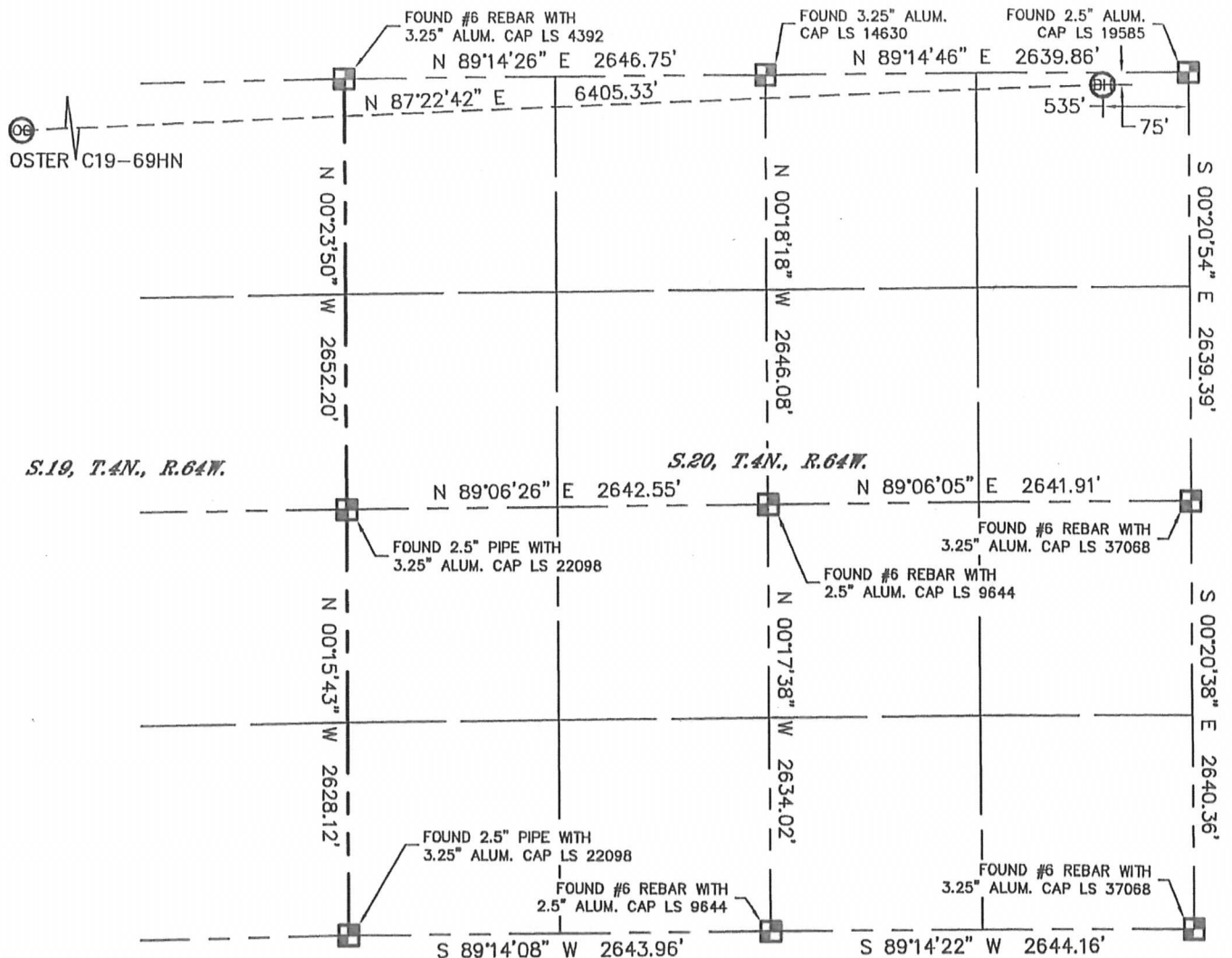


WELL LOCATION CERTIFICATE

THIS MAP DOES NOT REPRESENT A BOUNDARY SURVEY

SECTION: 19
TOWNSHIP: 4N
RANGE: 64W



NOTE

According to Colorado law, you must commence any legal action based upon any defect in this W.L.C. within three years after you discover such defect. In no event, may any action based upon any defect in this survey be commenced more than ten years after the date of the certificate shown hereon. (13-80-105 C.R.S.)

LEGEND

- = ALIQUOT MONUMENT AS DESCRIBED
- = CALCULATED POSITION

(SHEET 2 OF 2)

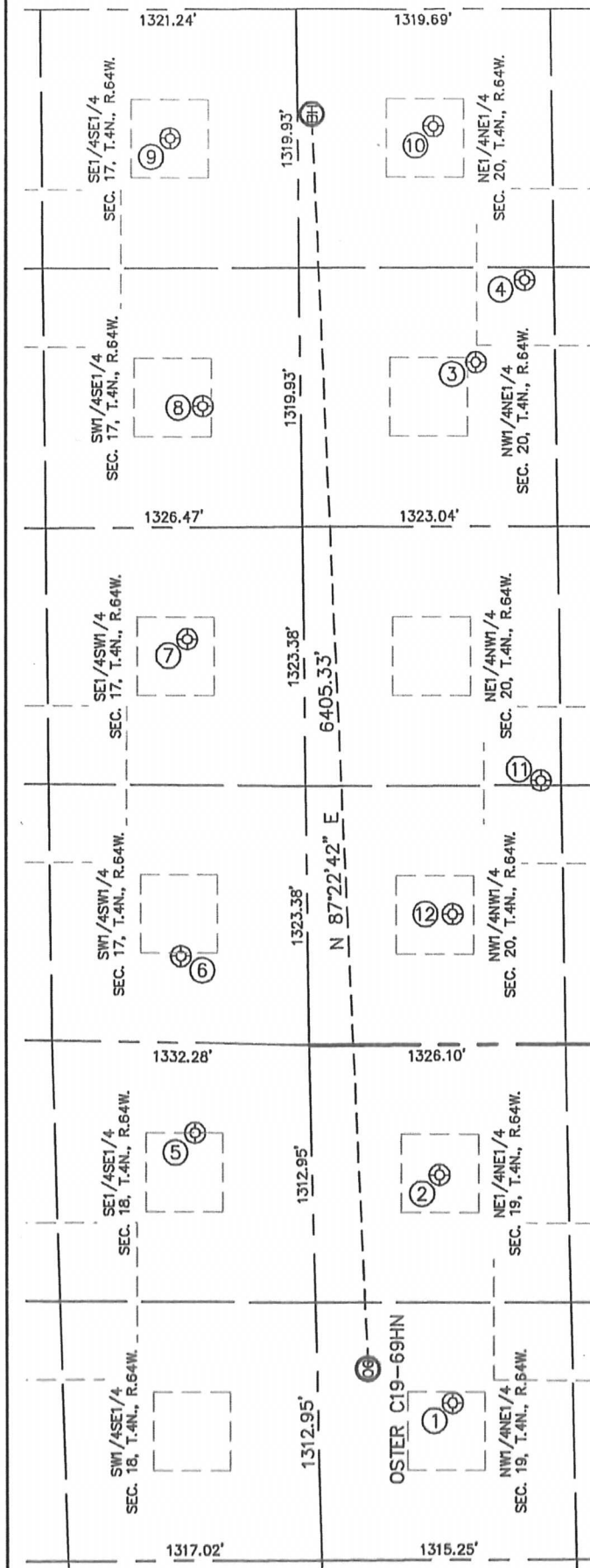
Brian T. Brinkman—On behalf of Lat40°, Inc.
Colorado Licensed Professional
Land Surveyor No. 38175 PROJECT#: 2011189



SITE SKETCH

OSTER C19-69HN

SECTION: 19
TOWNSHIP: 4N
RANGE: 64W



- ①
MOORE UPRC C19-2
NW1/4NE1/4
697' FNL
1825' FEL
LAT-40.30315°N
LONG-104.59065°W
PDOP:1.4
ELEV:4821'

- ②
CPC OSTER 19-1
NE1/4NE1/4
661' FNL
663' FEL
LAT-40.30330°N
LONG-104.58648°W
PDOP: 1.7
ELEV: 4800'

- ③
TODD 20-2
NW1/4NE1/4
910' FNL
1803' FEL
LAT-40.30267'N
LONG-104.57162'W
PDOP: 1.2
ELEV: 4720'

- ④
LONG C20-17
NW1/4NE1/4
1167' FNL
1385' FEL
LAT-40.30197°N
LONG-104.57013°W
PDOP: 1.1
ELEV: 4710'

- ⑤
RITER C18-16
SE1/4SE1/4
602' FSL
457' FEL
LAT-40.30678°N
LONG-104.58568°W
PDOP: 1.9
ELEV: 4769'

- ⑥
OCOMA C17-13
SW1/4SW1/4
656' FSL
442' FWL
LAT-40.30695°N
LONG-104.58245°W
PDOP: 1.2
ELEV: 4752'

- ⑦
UPRR OCOMA C17-14
SE1/4SW1/4
601' FSL
2061' FWL
LAT-40.30681°N
LONG-104.57665°W
PDOP:1.8
ELEV: 4725'

- ⑧
OCOMA C17-15
SW1/4SE1/4
507' FSL
2024' FEL
LAT-40.30656°N
LONG-104.57239°W
PDOP: 1.2
ELEV: 4712'

- ⑨
OCOMA C17-16
SE1/4SE1/4
659' FSL
658' FEL
LAT-40.30699°N
LONG-104.56749°W
PDOP: 1.8
ELEV: 4697'

- ⑩
TODD #1
NE1/4NE1/4
707' FNL
600' FEL
LAT-40.30324°N
LONG-104.56731°W
PDOP: 1.1
ELEV: 4705'

- ⑪
 PREBISH C20-19
 NE1/4NW1/4
 1219' FNL
 1347' FWL
 LAT-40.30181°N
 LONG-104.57928°W
 PDOP: 3.2
 ELEV: 4769'

- (12)
 AGRICULTURAL PRODUCTS
 INC. 20-414
 NW1/4NW1/4
 755' FNL
 666' FWL
 LAT-40.30308'N
 LONG-104.58172'W
 PDOP: 2.4
 ELEV: 4782'

