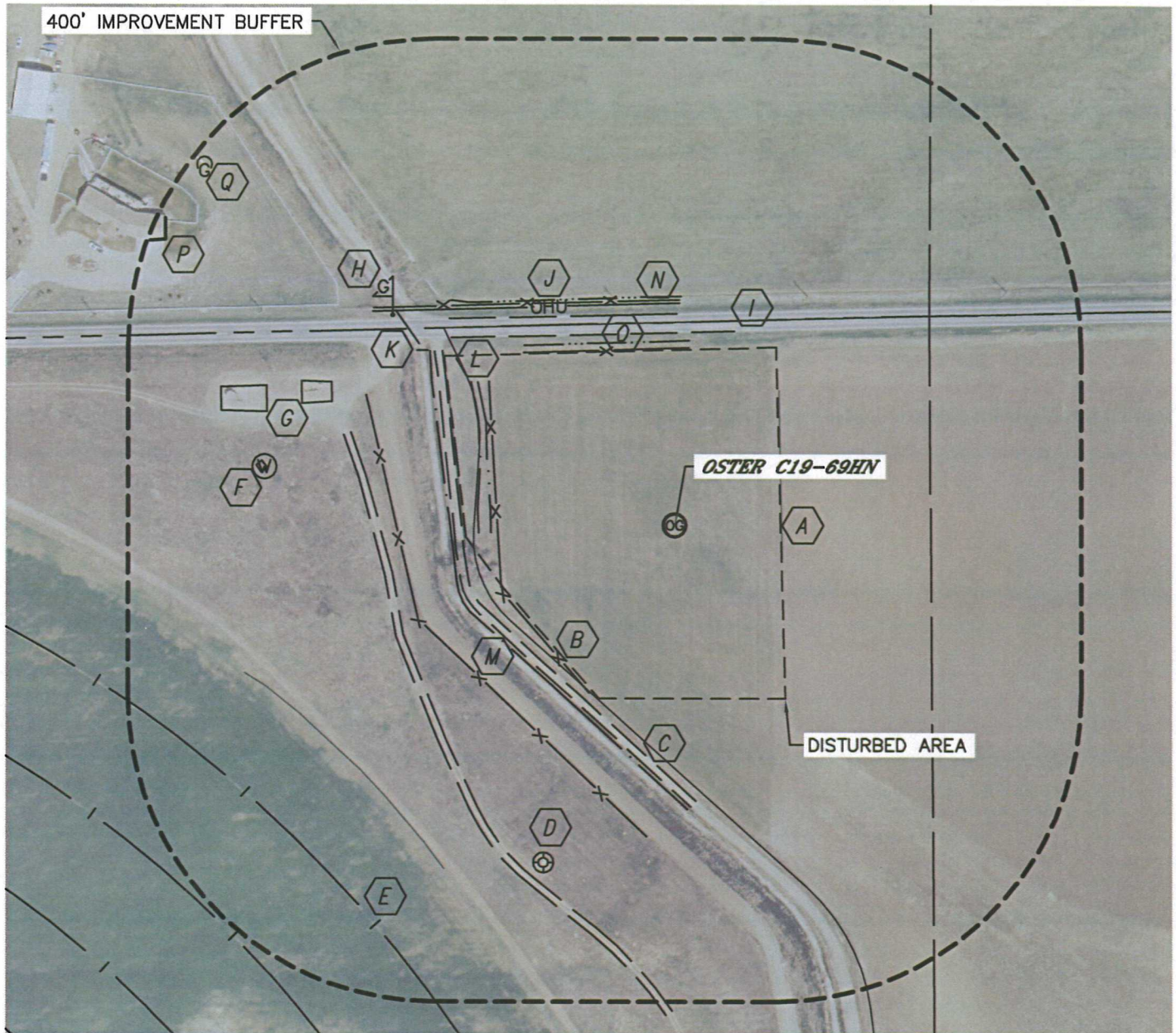


LOCATION DRAWING

OSTER C19-69HN

SECTION: 19
TOWNSHIP: 4N
RANGE: 64W



IMPROVEMENTS:

- | | | |
|--|----------------------------------|-------------------------------------|
| A FIELD LINE 140' E, 517' SW | H GAS MARKER 460' NW | O BARROW DITCH 239' & 289' N |
| B FENCE 228' & 319' SW, 233' & 356' W
230' & 293' N | I COUNTY ROAD 44 250' N | P BUILDING 765' NW |
| C FIELD ROAD 247' & 383' SW, 278' W | J OVERHEAD UTILITY 288' N | Q PROPANE TANK 775' NW |
| D EX. OIL/GAS WELL 471' SW | K CULVERT 409' NW | |
| E PIVOT TRACK 640' SW | L BERM 241' W | |
| F WATER WELL 543' NW | M CANAL 263' SW, 293' W | |
| G EX. PRODUCTION EQUIPMENT (KERR McGEE)
477' & 555' NW | N DITCH 297' N | |

NEAREST: BUILDING 765' NW, PUBLIC ROAD 250' N (CR 44),
ABOVE GROUND UTILITY 288' N, RAILROAD 5280'+, PROPERTY LINE ±236' SW

