

SYNERGY RESOURCES CORPORATION
20203 HIGHWAY 60
PLATTEVILLE, Colorado

SRC Pratt
SRC Pratt 41-29D

Ensign/33

Post Job Summary

Cement Production Casing

Date Prepared: 4/18/11
Version: 1

Service Supervisor: SALINAS, JOSE

Submitted by: FRY, DOMINIK

HALLIBURTON

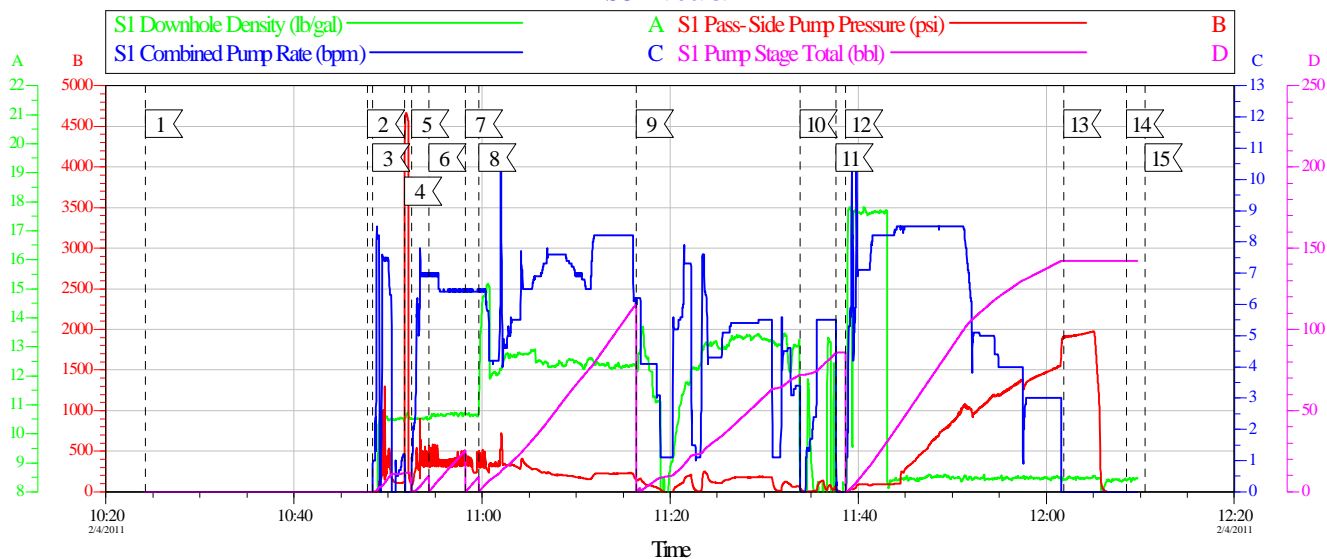
HALLIBURTON

Pumping Schedule

Stage / Plug #	Fluid #	Fluid Type	Fluid Name	Surface Density lbm/gal	Avg Rate bbl/min	Surface Volume	Downhole Volume
1	1	Spacer	TUNED SPACER III	9.70	5.00	30.0 bbl	30.0 bbl
1	2	Cement Slurry	Varicem 12#	12.00	5.00	350.0 sacks	350.0 sacks
1	3	Cement Slurry	VariCem 13.0#	13.00	5.00	300.0 sacks	300.0 sacks
1	4	Spacer	ClaFix III Water Displacement	8.33	7.00	134 bbl	134 bbl

Data Acquisition

SYENERGY
SRC PRATT 29PD 45 PRODUCTION
SO# 7950939



Global Event Log

Intersection	SPPP	Intersection	SPPP	Intersection	SPPP
1 Starting Job	10:24:12 0.304	2 Start Job	10:47:49 -0.696	3 Pump Spacer 1	10:48:22 -0.696
4 Test Lines	10:51:46 366.8	5 Pump Spacer 1	10:52:32 88.30	6 Pump Spacer 2	10:54:21 458.9
7 Pump Spacer 3	10:58:14 385.1	8 Pump Cement	10:59:39 452.1	9 Pump Tail Cement	11:16:25 142.3
10 Clean Lines	11:33:50 45.29	11 Drop Plug	11:37:36 47.24	12 Pump Displacement	11:38:40 -1.696
13 Bump Plug	12:01:53 1908	14 End Job	12:08:31 -2.696	15 Ending Job	12:10:31 -2.696

Customer:	Job Date: 04-Feb-2011	Sales Order #: 7950939	HALLIBURTON
Well Description:	Job Type:	ADC Used:	OptiCemv6.4.9
Company Rep:	Cement Supervisor:	Elite #:	04-Feb-11 12:14

HALLIBURTON

Service Supervisor Reports

Job Log

Date/Time	Chart #	Activity Code	Pump Rate	Cum Vol	Pump	Pressure (psig)	Comments
04/15/2011 05:00		Call Out					
04/15/2011 07:15		Pre-Convoy Safety Meeting					
04/15/2011 08:30		Arrive at Location from Service Center					
04/15/2011 10:45		Pre-Rig Up Safety Meeting					
04/15/2011 11:00		Rig-Up Equipment					
04/15/2011 12:20		Pre-Job Safety Meeting					
04/15/2011 12:21		Test Lines	2	2		3000.0	TEST LINES WITH FRESH WATER
04/15/2011 12:26		Pump Spacer	5	30		25.0	PUMP TUNED SPACER @ 9.7 PPG
04/15/2011 12:34		Pump Lead Cement	6	155		469.0	PUMP 350 SKS OF VARICEM @ 12.0 PPG (155 BBL)
04/15/2011 13:01		Pump Tail Cement	6	104		104.0	PUMP 300 SKS OF VARICEM @ 13.0 PPG (104 BBL)
04/15/2011 13:27		Clean Lines	5	10		97.0	WASH LINES WITH FRESH WATER
04/15/2011 13:33		Drop Top Plug	0	0		.0	PLUG LEFT CMT HEAD
04/15/2011 13:34		Pump Displacement	6			25.0	PUMP 134.5 BBL OF FRESH WATER FOR DISPLACEMENT
04/15/2011 13:55		Other	3	124		1689.0	SLOW RATE DOWN TO BUMP PLUG
04/15/2011 14:00		Bump Plug	3	134		2411.0	BUMP PLUG WITH 1000 PSI OVER
04/15/2011 14:01		Release Casing Pressure	0	0		.0	RELEASE PSI
04/15/2011 14:02		Check Floats	0	0		.0	CHECK FLOATS HELD GOOD
04/15/2011 14:05		End Job					
04/15/2011 14:10		Pre-Rig Down Safety Meeting					
04/15/2011 14:15		Rig-Down Equipment					
04/15/2011 15:15		Depart Location Safety Meeting					
04/15/2011 15:30		Depart Location for Service Center or Other Site					

HALLIBURTON

The Road to Excellence Starts with Safety

Sold To #: 359915	Ship To #: 2848059	Quote #:	Sales Order #: 8100512
Customer: SYNERGY RESOURCES CORPORATION		Customer Rep:	
Well Name: SRC Pratt		Well #: 41-29D	API/UWI #: 05-123-33205
Field: WATTENBERG	City (SAP): ERIE	County/Parish: Weld	State: Colorado
Contractor: Ensign		Rig/Platform Name/Num: 33	
Job Purpose: Cement Production Casing			
Well Type: Development Well		Job Type: Cement Production Casing	
Sales Person: FLING, MATTHEW	Srvc Supervisor: SALINAS, JOSE		MBU ID Emp #: 100319

Job Personnel

HES Emp Name	Exp Hrs	Emp #	HES Emp Name	Exp Hrs	Emp #	HES Emp Name	Exp Hrs	Emp #
BULINSKI, MATTHEW J		483865	MAHONEY, KELLAN Carl		476531	OTERI, VAUGHN Steeves		443828
PICKELL, CHRISTOPHER Lee		396838	SALINAS, JOSE R		100319			

Equipment

HES Unit #	Distance-1 way	HES Unit #	Distance-1 way	HES Unit #	Distance-1 way	HES Unit #	Distance-1 way
10857012C	30 mile	10857080C	30 mile	10948695	30 mile	11036295C	30 mile
11341988C	30 mile	11398319	30 mile	5707C	30 mile		

Job Hours

Date	On Location Hours	Operating Hours	Date	On Location Hours	Operating Hours	Date	On Location Hours	Operating Hours
TOTAL			Total is the sum of each column separately					

Job

Job Times

Formation Name					Date	Time	Time Zone
Formation Depth (MD)	Top		Bottom		Called Out	15 - Apr - 2011 05:00	MST
Form Type		BHST			On Location	15 - Apr - 2011 08:00	MST
Job depth MD	8270. ft	Job Depth TVD	8270. ft		Job Started	15 - Apr - 2011 12:20	MST
Water Depth		Wk Ht Above Floor	4. ft		Job Completed	15 - Apr - 2011 14:03	MST
Perforation Depth (MD)	From		To		Departed Loc	15 - Apr - 2011 15:30	MST

Well Data

Description	New / Used	Max pressure psig	Size in	ID in	Weight lbm/ft	Thread	Grade	Top MD ft	Bottom MD ft	Top TVD ft	Bottom TVD ft
Open Hole				7.875				940.	8270.	.	.
Production Casing	New		4.5	4.	11.6			.	8150.		
Surface Casing	New		8.625	8.097	24.		J-55	.	940.	.	.

Sales/Rental/3rd Party (HES)

Description	Qty	Qty uom	Depth	Supplier
SHOE,FLT,4-1/2 8RD,2-3/4 SSII	1	EA		
CLR,FLT,4-1/2 8RD,9.5-13.5PPF,2-3/4	1	EA		
CENTRALIZER ASSY - API - 4-1/2 CSG X	36	EA		
CLAMP - LIMIT - 4-1/2 - HINGED -	1	EA		
KIT,HALL WELD-A	1	EA		
Description	Qty	Qty uom	Depth	Supplier
PLUG ASSY - 3W LATCHDOWN - 4-1/2 IN	1	EA		
BAFFLE ASSY - 4-1/2 8RD LATCHDOWN PLUG	1	EA		

HALLIBURTON

Tools and Accessories

Type	Size	Qty	Make	Depth	Type	Size	Qty	Make	Depth	Type	Size	Qty	Make
Guide Shoe					Packer					Top Plug			
Float Shoe					Bridge Plug					Bottom Plug			
Float Collar					Retainer					SSR plug set			
Insert Float										Plug Container			
Stage Tool										Centralizers			

Miscellaneous Materials

Gelling Agt		Conc		Surfactant		Conc		Acid Type		Qty		Conc	%
Treatment Fld		Conc		Inhibitor		Conc		Sand Type		Size		Qty	

Fluid Data

Stage/Plug #: 1

Fluid #	Stage Type	Fluid Name	Qty	Qty uom	Mixing Density lbm/gal	Yield ft ³ /sk	Mix Fluid Gal/sk	Rate bbl/min	Total Mix Fluid Gal/sk
1	TUNED SPACER III	TUNED SPACER III - SBM (483826)	30.00	bbl	9.7	5.71	38.35	5.0	
	38.35 gal/bbl	FRESH WATER							
	43.4 lbm/bbl	BARITE, BULK (100003681)							
2	Varicem 12#	VARICEM (TM) CEMENT (452009)	350.0	sacks	12.	2.49	13.91	5.0	13.91
	13.91 Gal	FRESH WATER							
3	VariCem 13.0#	VARICEM (TM) CEMENT (452009)	300.0	sacks	13.	6.0	9.92	5.0	9.92
	9.92 Gal	FRESH WATER							
4	ClaFix III Water Displacement		10.00	Gal	8.33	.0	.0	7.0	

Calculated Values

Pressures

Volumes

Displacement		Shut In: Instant		Lost Returns		Cement Slurry		Pad	
Top Of Cement		5 Min		Cement Returns		Actual Displacement		Treatment	
Frac Gradient		15 Min		Spacers		Load and Breakdown		Total Job	

Rates

Circulating		Mixing		Displacement		Avg. Job	
Cement Left In Pipe	Amount	42 ft	Reason	Shoe Joint			
Frac Ring # 1 @	ID	Frac ring # 2 @	ID	Frac Ring # 3 @	ID	Frac Ring # 4 @	ID

The Information Stated Herein Is Correct

Customer Representative Signature