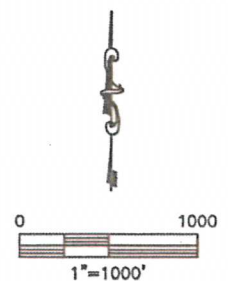
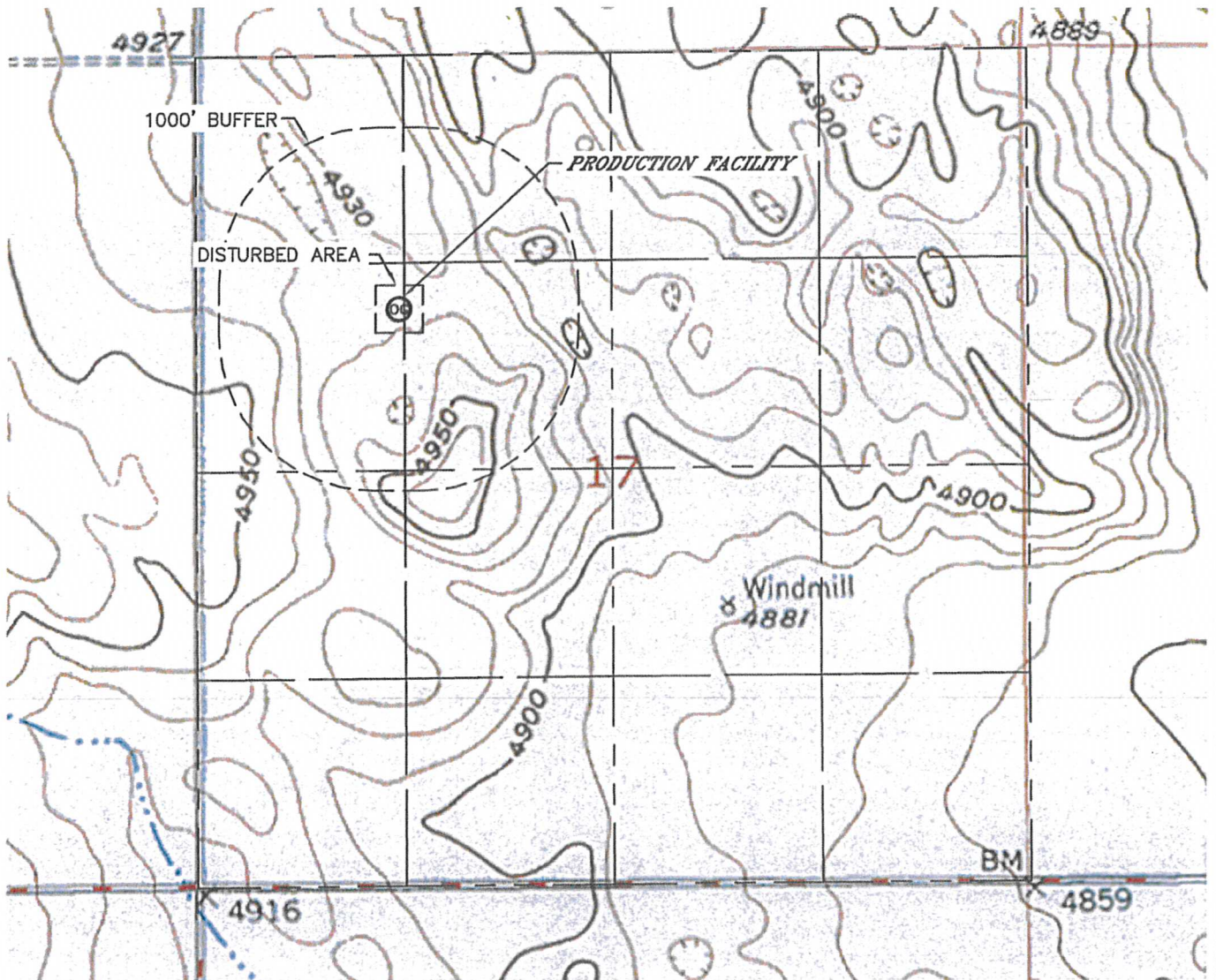


Lat40°, Inc. 1635 Foxtrail Drive, Suite 325 Loveland, CO 970-776-3321

# PRODUCTION FACILITY HYDROLOGY MAP

REI H17-21D, H17-28D, H17-30D

SECTION: 17  
TOWNSHIP: 3N  
RANGE: 65W



NO VISIBLE SURFACE WATER WITHIN 1000'