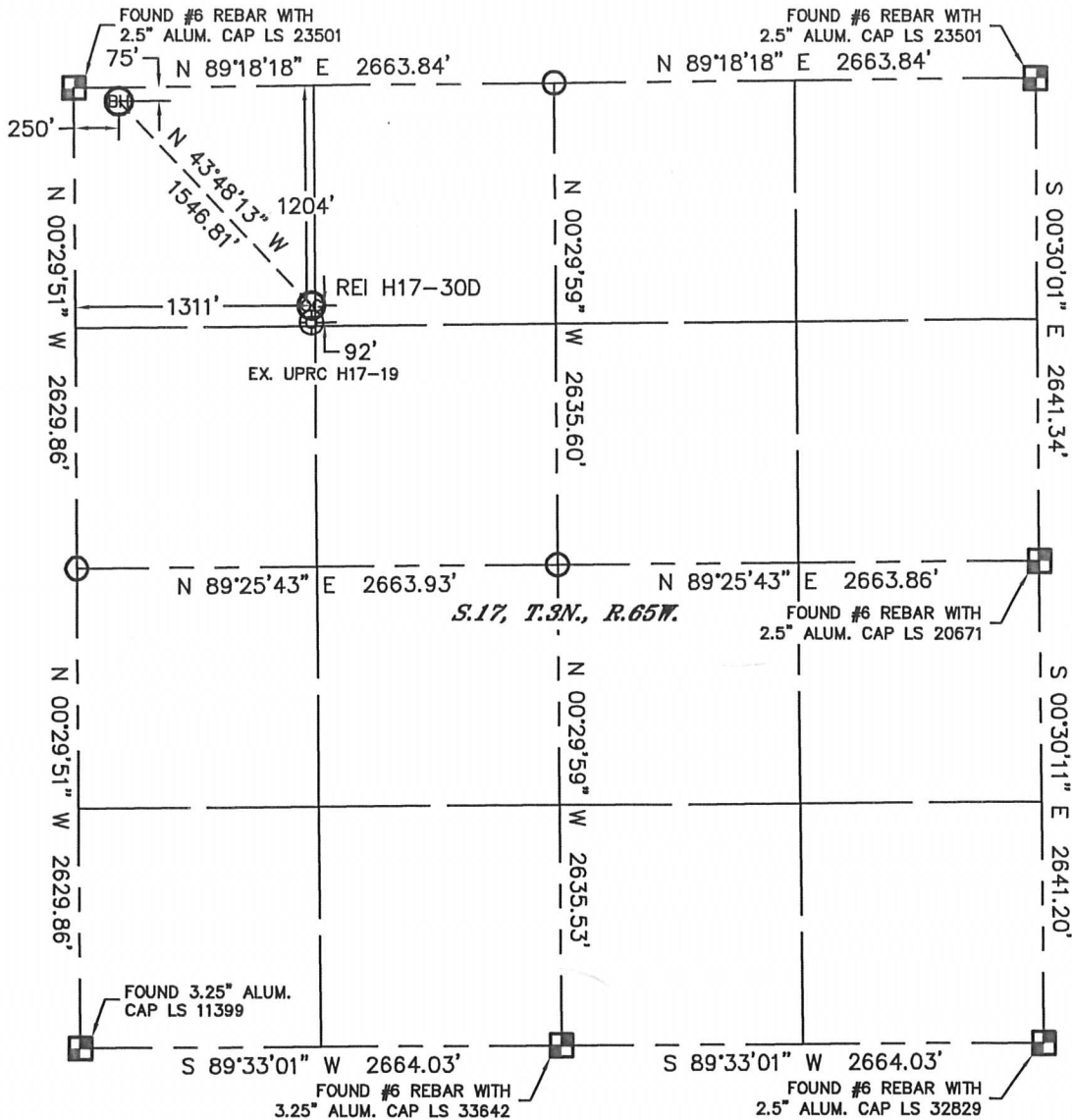


Lat40°, Inc. 1635 Foxtrail Drive, Suite 325 Loveland, CO 970-776-3321

# WELL LOCATION CERTIFICATE

THIS MAP DOES NOT REPRESENT A BOUNDARY SURVEY

SECTION: 17  
TOWNSHIP: 3N  
RANGE: 65W



In accordance with a request from MIKE RODINE with Noble Energy Inc. Lat40°, Inc. has determined the surface location of the REI H17-30D to be 1204' from the NORTH line and 1311' from the WEST line and the bottom hole to be 75' from the NORTH line and 250' from the WEST line as measured at right angles from the section lines of Section 17, Township 3 North, Range 65 West of the Sixth Principal Meridian, County of Weld, State of Colorado.

I hereby state that this Well Location Certificate was prepared by me, or under my direct supervision, that the fieldwork was completed on 1/27/12, for and on behalf of Noble Energy Inc. That this is not a Land Survey Plat or an Improvement Survey Plat, and that it is not to be relied upon for establishment of fence, building, or other future Improvement lines.

## NOTE:

- 1) Bearings shown are Grid Bearings of the Colorado State Plane Coordinate System, North Zone, North American Datum 1983/2007. The lineal dimensions as contained herein are based upon the "U.S. Survey Foot."
- 2) Ground elevations are based on an observed GPS elevation (NAVD 1988 DATUM).
- 3) NEAREST EXISTING WELL: UPRC H17-19, 92'
- 4) IMPROVEMENTS: See LOCATION DRAWING for all visible Improvements within 400' of disturbed area.
- 5) SURFACE USE: RANGELAND, EX. WELL SITE
- 6) INSTRUMENT OPERATOR: ADAM KELLY

## NOTE

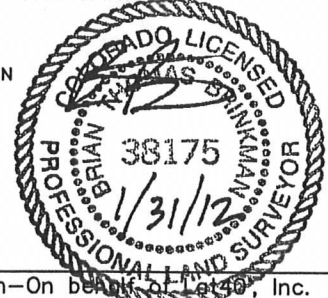
According to Colorado law, you must commence any legal action based upon any defect in this W.L.C. within three years after you discover such defect. In no event, may any action based upon any defect in this survey be commenced more than ten years after the date of the certificate shown hereon. (13-80-105 C.R.S.)

## LEGEND

- = ALIQUOT MONUMENT AS DESCRIBED
- = CALCULATED POSITION

SURFACE LOCATION  
LATITUDE: 40.22933°N  
LONGITUDE: 104.69213°W  
PDOP: 1.2  
ELEV: 4929'  
1/4, 1/4: NW1/4NW1/4  
NEAREST PROPERTY LINE: 1204' N

BOTTOM HOLE  
LATITUDE: 40.23242°N  
LONGITUDE: 104.69593°W



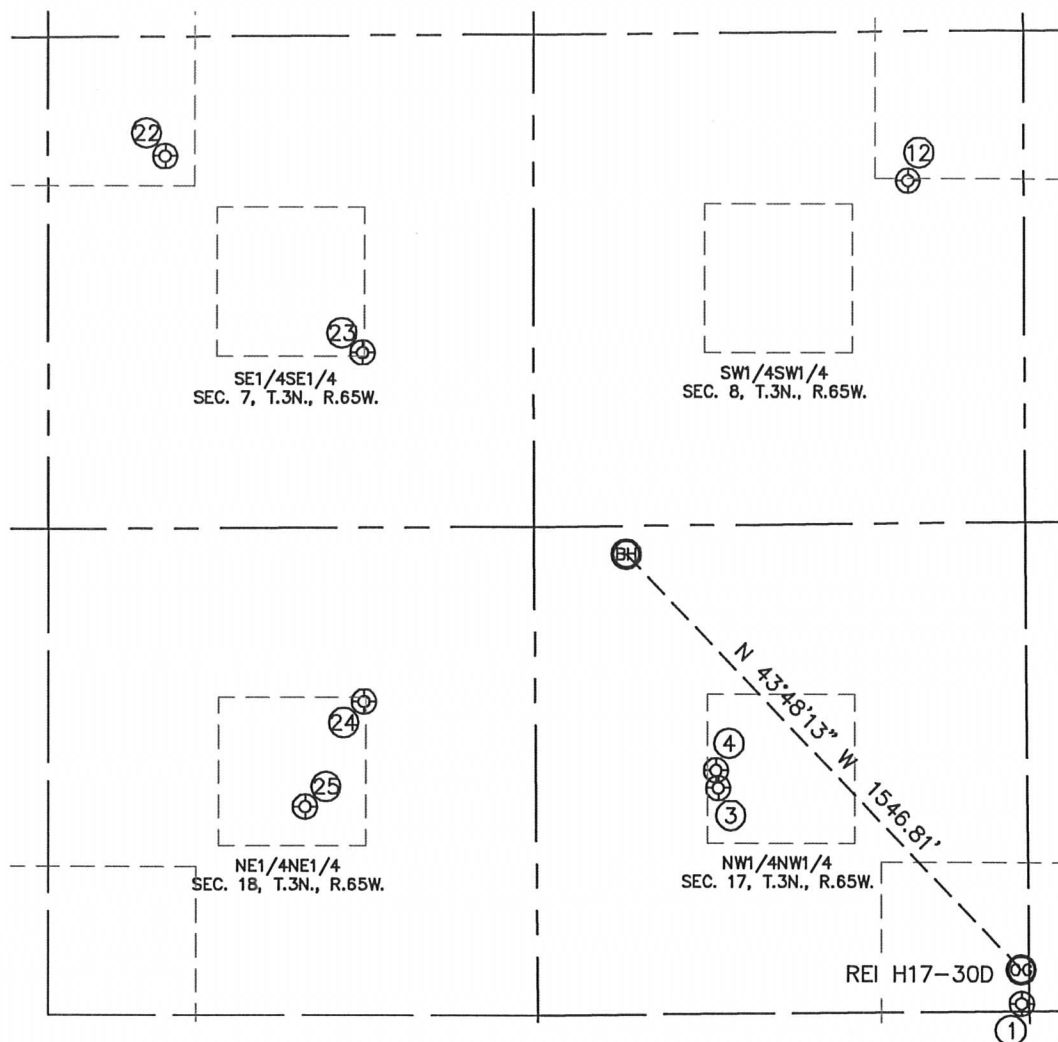
Brian T. Brinkman—On behalf of Lat40°, Inc.  
Colorado Licensed Professional  
Land Surveyor No. 38175

DATE: rev 1/27/12  
PROJECT#: 2011286

# SITE SKETCH

REI H17-30D

SECTION: 17  
TOWNSHIP: 3N  
RANGE: 65W



①  
UPRC H17-19  
NW1/4NW1/4  
1296' FNL  
1311' FWL  
LAT-40.22908°N  
LONG-104.69213°W  
PDOP: 2.8  
ELEV: 4929'

③  
REI H17-31D  
NW1/4NW1/4  
707' FNL  
495' FWL  
LAT-40.23069°N  
LONG-104.69505°W  
PDOP: 2.5  
ELEV: 4922'

④  
UPRC 17-4J  
NW1/4NW1/4  
660' FNL  
489' FWL  
LAT-40.23082°N  
LONG-104.69507°W  
PDOP: 1.7  
ELEV: 4921'

⑫  
ARISTOCRAT ANGUS 1  
SW1/4SW1/4  
920' FSL  
1019' FWL  
LAT-40.23516°N  
LONG-104.69315°W  
PDOP: 3.8  
ELEV: 4904'

②②  
WARDELL B UNIT 1  
SE1/4SE1/4  
1001' FSL  
1001' FEL  
LAT-40.23538°N  
LONG-104.70038°W  
PDOP: 1.2  
ELEV: 4954'

②③  
WARDELL 44-7  
SE1/4SE1/4  
470' FSL  
465' FEL  
LAT-40.23392°N  
LONG-104.69848°W  
PDOP: 1.7  
ELEV: 4939'

②④  
WFL H18-1J  
NE1/4NE1/4  
468' FNL  
466' FEL  
LAT-40.23134°N  
LONG-104.69849°W  
PDOP: 1.7  
ELEV: 4931'

②⑤  
WARDELL H18-01  
NE1/4NE1/4  
750' FNL  
628' FEL  
LAT-40.23057°N  
LONG-104.69907°W  
PDOP: 2.4  
ELEV: 4935'