

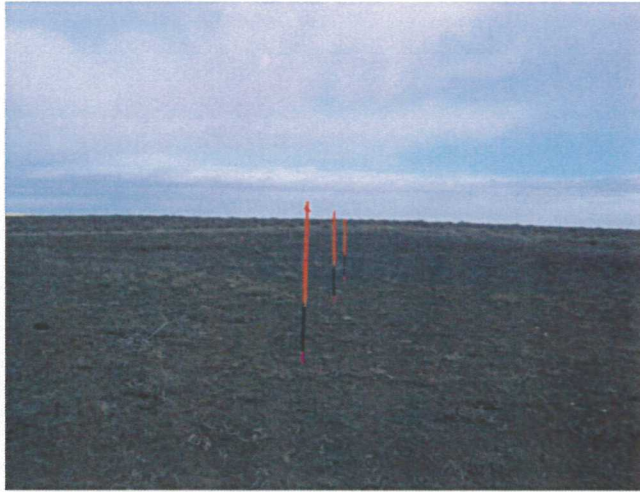
Lat40°, Inc. 1635 Foxtrail Drive, Suite 325 Loveland, CO 970-776-3321

LOCATION PICTURES

REI H17-21D, H17-28D, H17-30D

SECTION: 17
TOWNSHIP: 3N
RANGE: 65W

DATE: 1/27/12



VIEW NORTH



VIEW WEST



VIEW EAST



VIEW SOUTH

DATE: rev 1/27/12
PROJECT#: 2011286